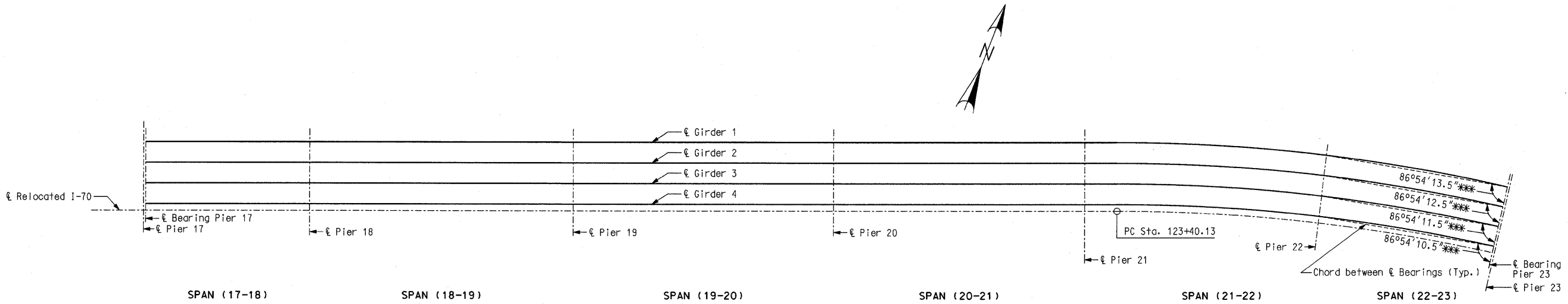
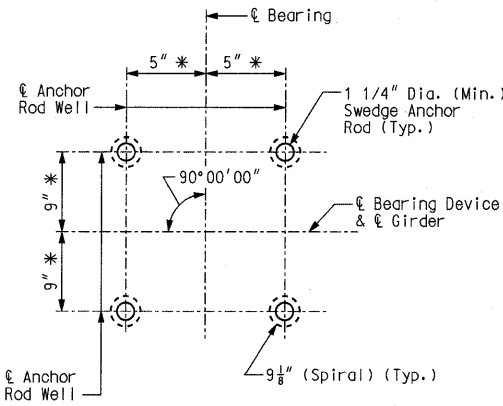


F.A. ROUTE	SECTION
999	82-1B-2
FED. AID PROJECT	ILLINOIS
COUNTY	ST. CLAIR

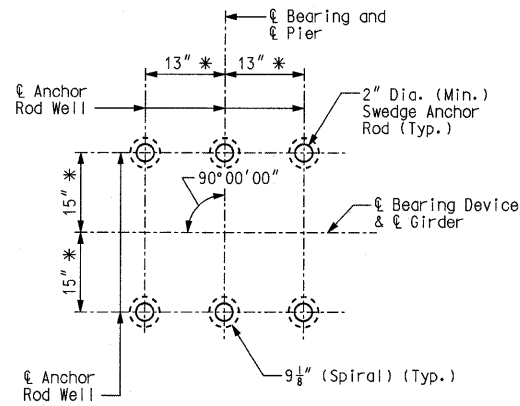
USER NAME = Jjolliff
PLOT SCALE = #SCALE#
PLOT DATE = 4/14/2010
DESIGNED - HNTB
CHECKED - CMT
DRAWN - CMT / HNTB
REVISED -
REVISED -
REVISED -
REVISED -



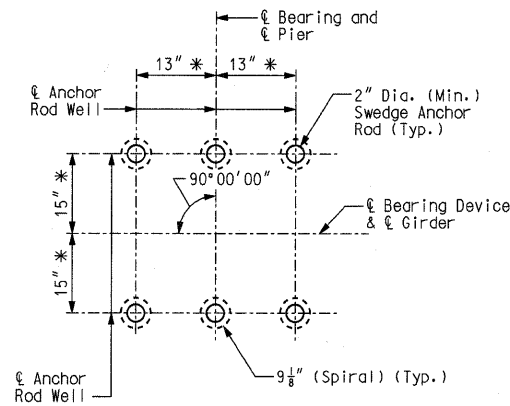
**BEARING DEVICE ALIGNMENT PLAN**



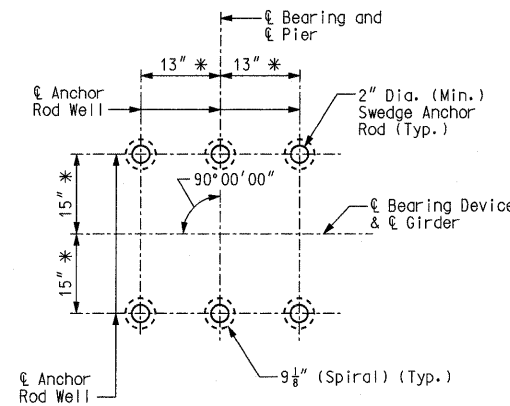
**ANCHOR ROD SETTING PLAN  
PIER 17 (SPAN 17-18)**



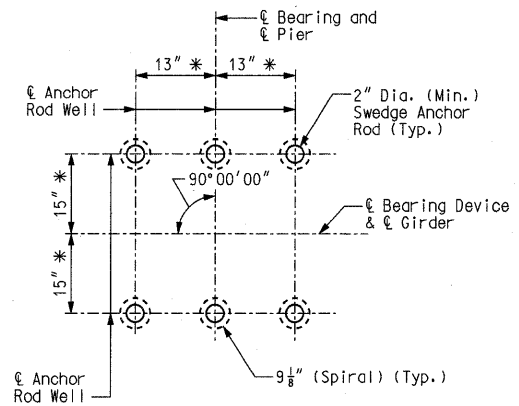
**ANCHOR ROD SETTING PLAN  
PIER 18**



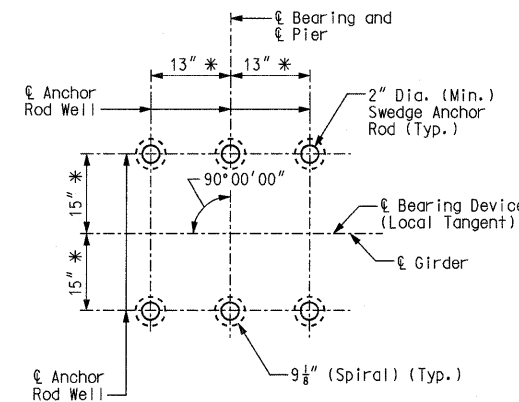
**ANCHOR ROD SETTING PLAN  
PIER 19**



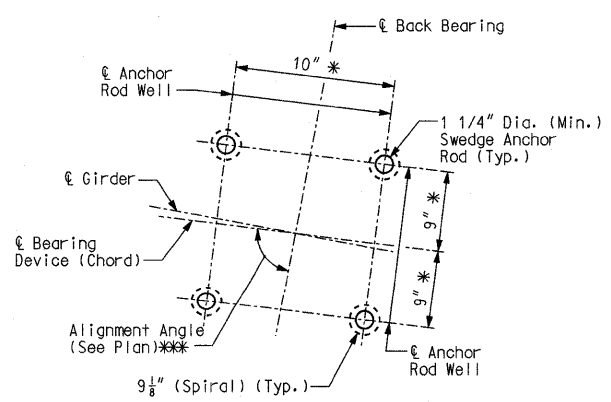
**ANCHOR ROD SETTING PLAN  
PIER 20**



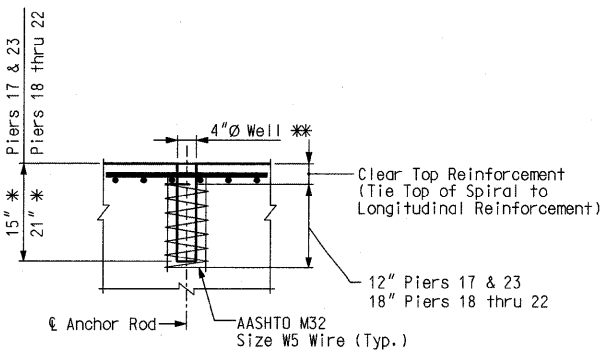
**ANCHOR ROD SETTING PLAN  
PIER 21**



**ANCHOR ROD SETTING PLAN  
PIER 22**



**ANCHOR ROD SETTING PLAN  
PIER 23**



**ANCHOR ROD WELL DETAIL**

**Notes:**

- \* The contractor, in coordination with the bearing manufacturer, shall be responsible for determining the size, number, and location of anchor rods based on the load and movement capacities, as indicated in the Bearing Data shown on Sheet Nos. 42 and 43.
- \*\* At the contractor's option the anchor bolt wells may be omitted, and in lieu thereof, holes drilled into the substructure. The anchor bolt holes shall be drilled in the exact location shown, to the required depth and perpendicular to the plane of the bridge seat. The drilled holes shall be no smaller than the diameter of the holes in the steel bearing plates or castings. The contractor shall not interfere with the beam cap reinforcing steel in any manner. The reinforcing steel shall not be cut or lanced in the event that the drilling for anchor rods interferes with the bars. When the anchor bolts are set in holes or wells, the hole or well shall be clean and dry prior to grouting with an expansive mortar in accordance with Sec 1066. Excess mortar forced out of holes shall be removed.
- \*\*\* Alignment angle measured from  $\ell$  Bearing to  $\ell$  Bearing Device. Anchor Rod Well sizes are conceptual and shall be sized by Contractor and coordinated with anchor rod requirements of the multi-rotational bearing manufacturer.

STATE OF ILLINOIS  
DEPARTMENT OF TRANSPORTATION

MISSOURI HIGHWAYS  
AND TRANSPORTATION COMMISSION

ILLINOIS APPROACH STRUCTURE  
FOR NEW I-70 MISSISSIPPI RIVER BRIDGE

**HNTB**  
715 KIPK DRIVE  
KANSAS CITY, MO 64105  
TELEPHONE (816) 472-1201  
CERTIFICATE OF AUTHORITY  
NO. 001270

**CMT**  
CRAWFORD, MURPHY & TILLY, INC.  
2750 WEST WASHINGTON STREET  
SPRINGFIELD, IL 62702  
TELEPHONE (217) 787-8050  
ENGINEERING CORPORATION - 000631