

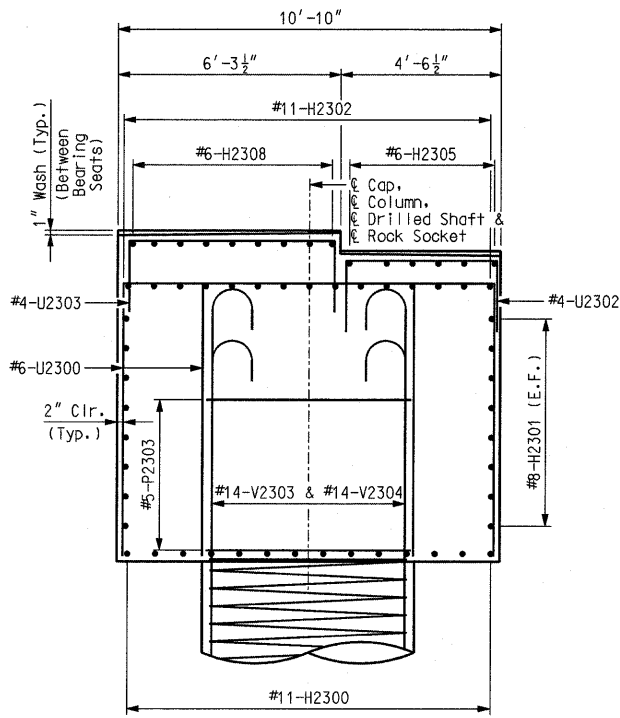
F.A. ROUTE	SECTION
999	82-1B-2
FED. AID PROJECT	ILLINOIS
COUNTY	ST. CLAIR
USER NAME = Jjolliff	
PLOT SCALE = #SCALE#	
PLOT DATE = 4/14/2010	
DESIGNED - HNTB	
CHECKED - CMT	
DRAWN - CMT / HNTB	
REVISED -	
REVISED -	
REVISED -	
REVISED -	

ILLINOIS APPROACH STRUCTURE  
FOR NEW I-70 MISSISSIPPI RIVER BRIDGE

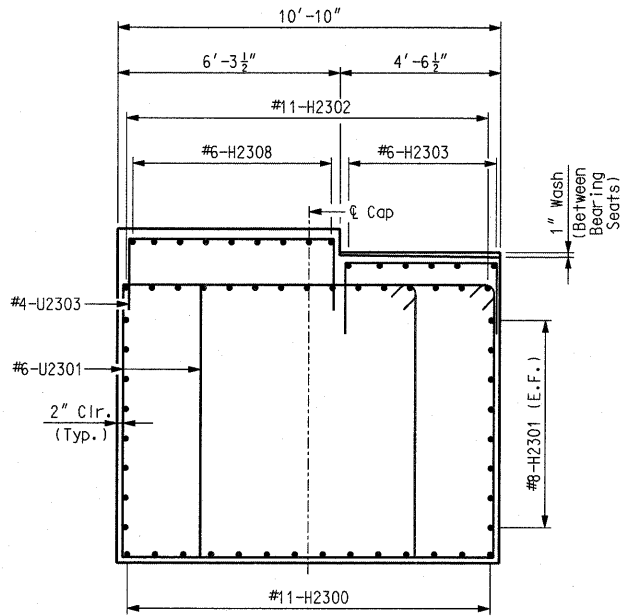
STATE OF ILLINOIS  
DEPARTMENT OF TRANSPORTATION  
MISSOURI HIGHWAYS  
AND TRANSPORTATION COMMISSION

**HNTB**  
715 KIRK DRIVE  
KANSAS CITY, MO 64105  
TELEPHONE (816) 472-1201  
CERTIFICATE OF AUTHORITY  
NO. 001270

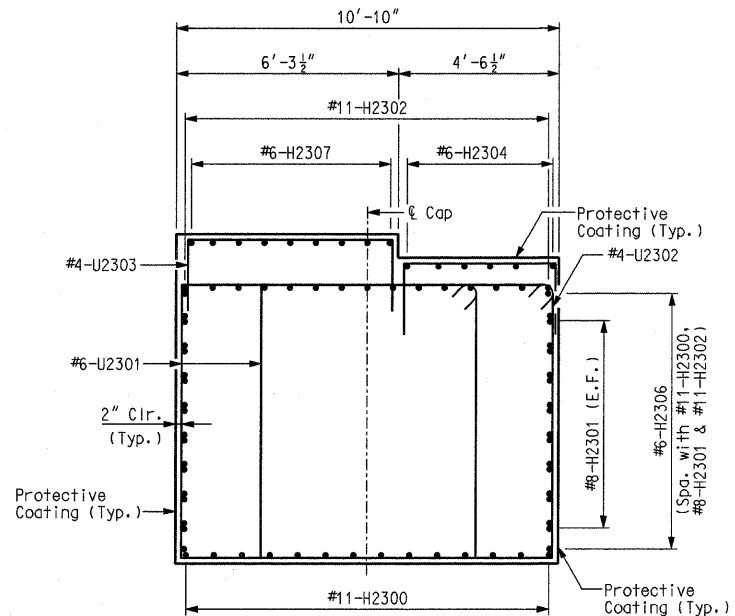
**CMT**  
CRAWFORD, MURPHY & TILLY, INC.  
2750 WEST WASHINGTON STREET  
SPRINGFIELD, IL 62702  
TELEPHONE (217) 787-8050  
ENGINEERING CORPORATION - 000631



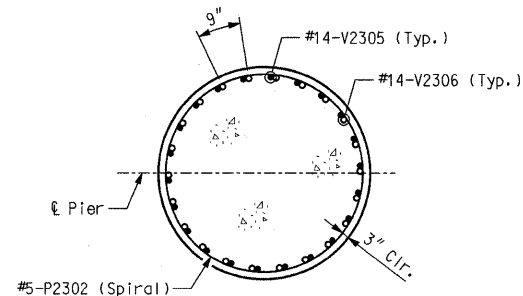
SECTION A-A



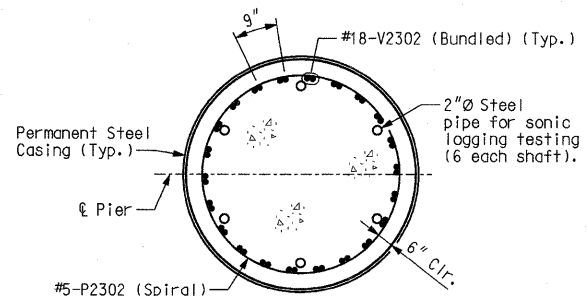
SECTION B-B



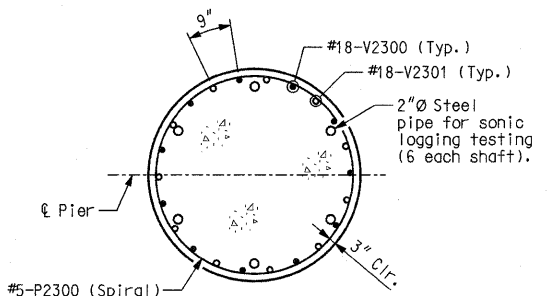
SECTION C-C



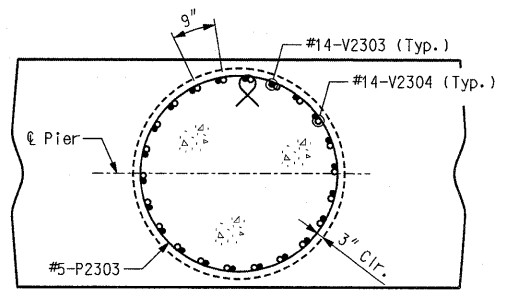
SECTION D-D  
(6'-0" Diameter)



SECTION E-E  
(6'-0" Diameter)



SECTION F-F  
(6'-0" Diameter)



SECTION G-G  
(Beam Cap reinforcement not shown)

Note: Seal back face of beam, top of beam, ends of beam, and front face of beam with Protective Coating - Concrete Bents and Piers (Epoxy). For location of Sections A-A, B-B, C-C, D-D, E-E, F-F, G-G, and additional notes, see Sheet No. 38.

Item	Quantity
Drilled Shafts (6 ft. 6 in. Dia.)	linear foot 217.0
Rock Sockets (6 ft. 0 in. Dia.)	linear foot 35.0
Supplementary Television Camera Inspection	each 1
Foundation Inspection Holes	linear foot 55.0
Sonic Logging Testing	each 2
Class B Concrete (Substructure)	cu. yard 237.3
Reinforcing Steel (Bridges)	pound 155,420
Mechanical Bar Splice	each 220
Reinforcing Steel (Epoxy Coated)	pound 49,660
Non-Special Waste Disposal	cu. yard 26.2

Note: These quantities are included in the estimated quantities table on Sheet No. 7.

PIER 23 WB - DETAILS