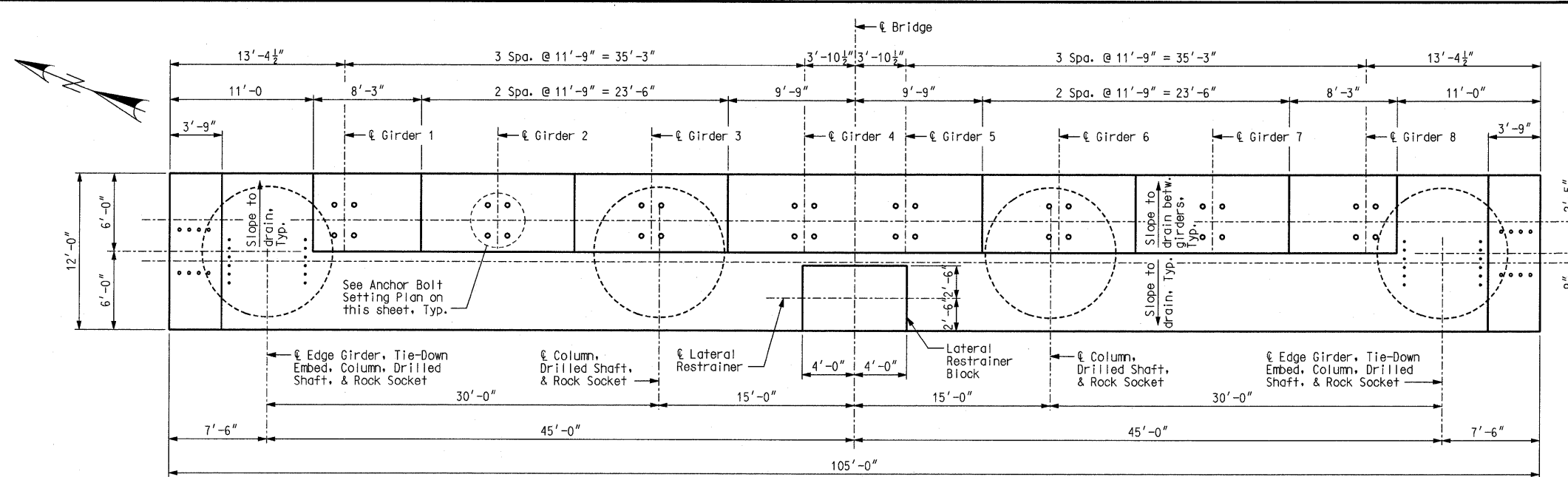
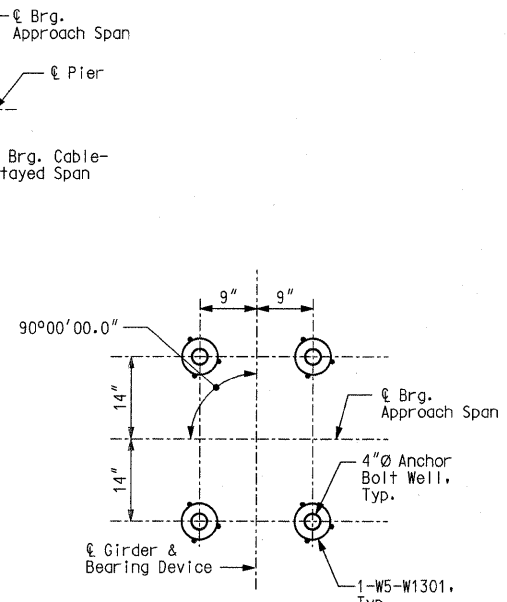


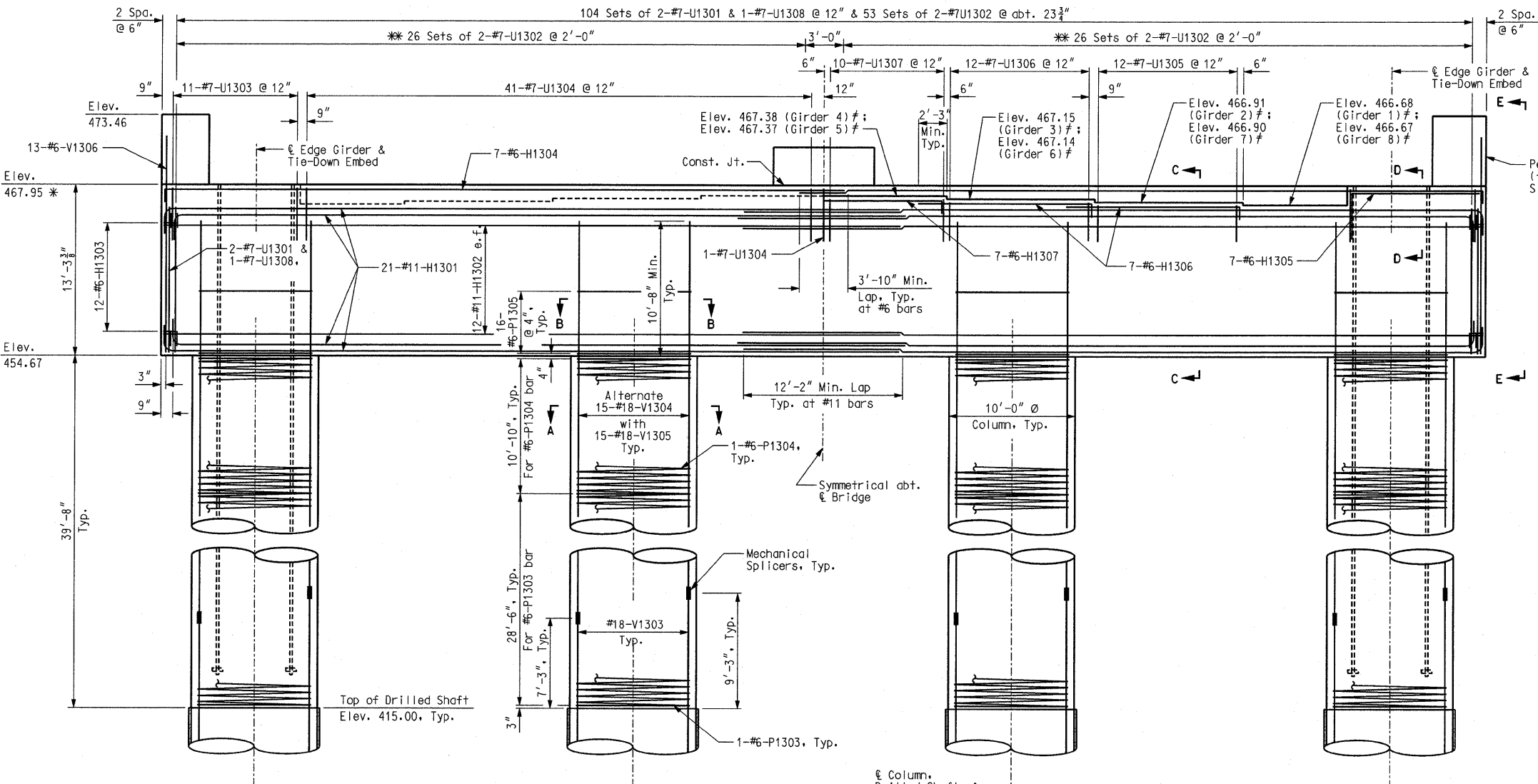
CONTRACT NO. 76D61	
F.A. ROUTE	SECTION
999	82-1B-2
FED. AID PROJECT ILLINOIS	
COUNTY	ST. CLAIR
USER NAME = jcolliff	
PLOT SCALE = #SCALE#	
PLOT DATE = 4/14/2010	
DESIGNED -	HNTB
CHECKED -	CMT
DRAWN -	CMT / HNTB
REVISED -	
REVISED -	
REVISED -	
REVISED -	



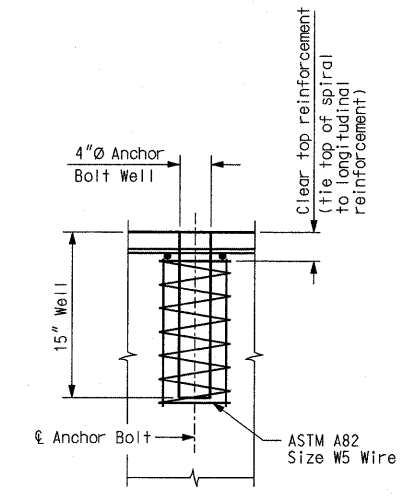
PLAN



ANCHOR BOLT WELL SETTING PLAN



ELEVATION



ANCHOR BOLT WELL DETAIL

Notes:
 All reinforcing bars in the top of the capbeam shall be spaced to clear anchor bolt wells for bearings by at least 1/2".
 Seal top and both faces of capbeam with Protective Coating.
 * Elevation taken at @ Pier.
 † Elevation taken at @ Brg. Approach Span.
 * Space to clear column reinforcing and anchor bolt wells.

LOOKING AHEAD STATION

LOOKING BACK STATION

Note: This drawing is not to scale. Follow dimensions.

Sheet No. 16 of 152

PIER 13 (FOR INFORMATION ONLY)

Detailed JUL 2009
 Checked JUL 2009

ILLINOIS APPROACH STRUCTURE
 FOR NEW I-70 MISSISSIPPI RIVER BRIDGE

STATE OF ILLINOIS
 DEPARTMENT OF TRANSPORTATION
 MISSOURI HIGHWAYS
 AND TRANSPORTATION COMMISSION

HNTB
 715 KIRK DRIVE
 KANSAS CITY, MO 64105
 TELEPHONE (816) 472-1201
 CERTIFICATE OF AUTHORITY
 NO. 001270

CMT
 CRAWFORD, MURPHY & TILLY, INC.
 2750 WEST WASHINGTON STREET
 SPRINGFIELD, IL 62702
 TELEPHONE (217) 787-8050
 ENGINEERING CORPORATION - 000631