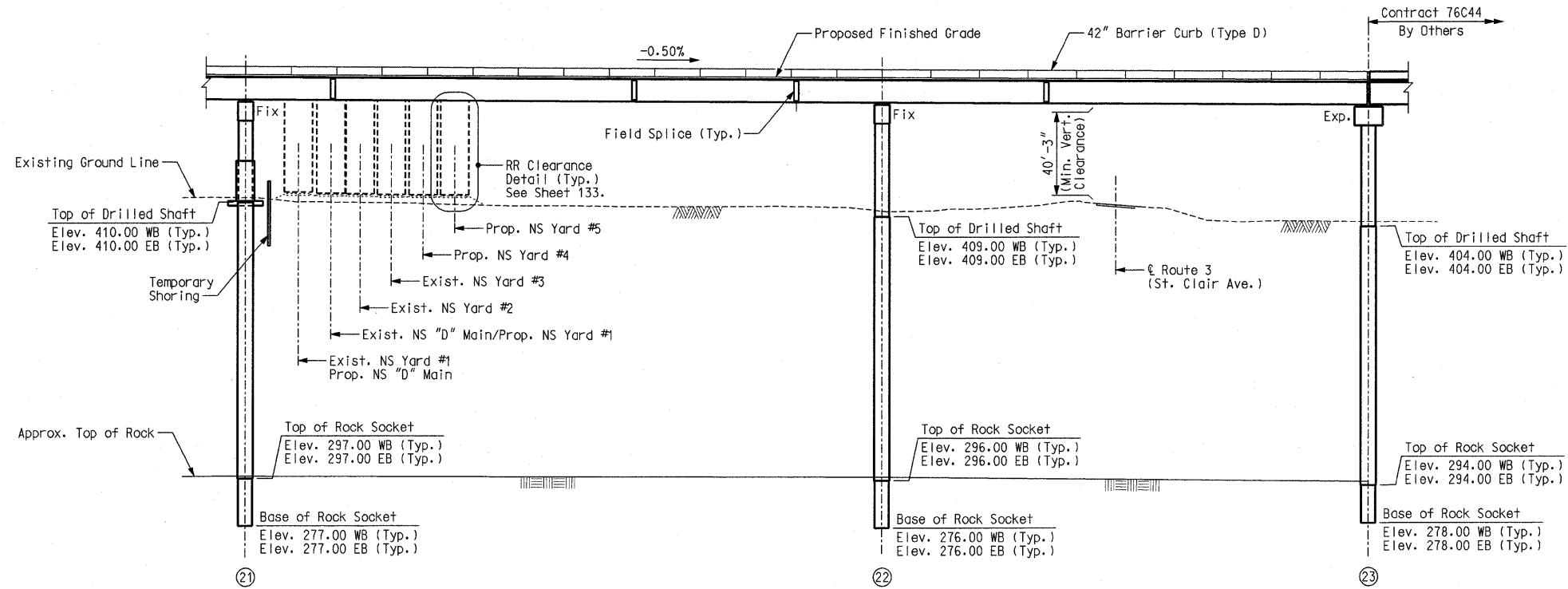
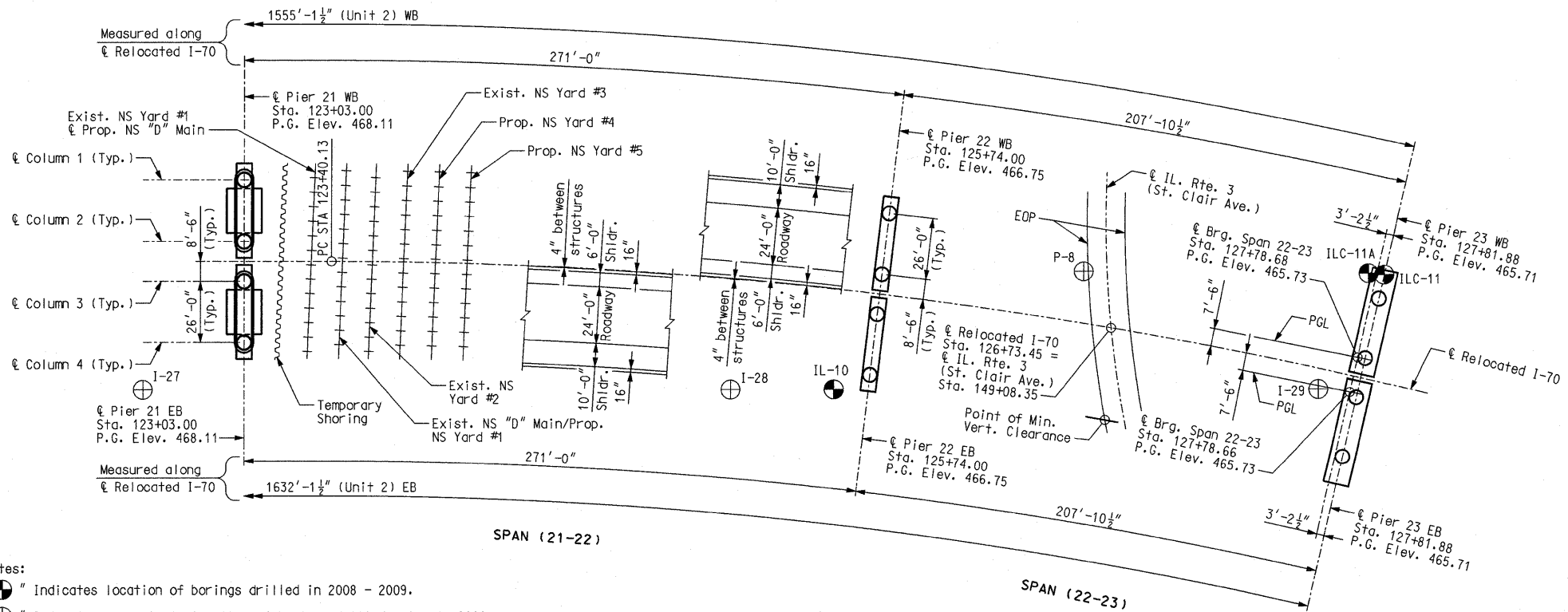


(195.50'-300.00'-300.00'-195.50') Continuous Composite Plate Girder Spans - WB Unit 1  
 (180.00'-277.00'-277.00'-180.00') Continuous Composite Plate Girder Spans - EB Unit 1  
 (190.00'-301.67'-297.58'-287.00'-271.00'-207.88') Continuous Composite Plate Girder Spans - WB Unit 2  
 (220.00'-320.67'-318.33'-294.25'-271.00'-207.88') Continuous Composite Plate Girder Spans - EB Unit 2



**PART GENERAL ELEVATION**  
 (Eastbound Spans Shown)



Notes:  
 "⊕" Indicates location of borings drilled in 2008 - 2009.  
 "⊕" Indicates approximate location of borings drilled prior to 2008.  
 All dimensions are horizontal.  
 Boring data for the borings drilled in 2008 - 2009 is shown on Sheet Nos. 9 thru 15.

**PART PLAN**

**GENERAL PLAN AND ELEVATION - SPANS (21-22) AND (22-23)**

|                       |            |
|-----------------------|------------|
| CONTRACT NO. 76D61    |            |
| F.A. ROUTE            | SECTION    |
| 999                   | 82-1B-2    |
| FED. AID PROJECT      | ILLINOIS   |
| COUNTY                | ST. CLAIR  |
| USER NAME = JJolliff  |            |
| PLOT SCALE = #SCALE#  |            |
| PLOT DATE = 4/14/2012 |            |
| DESIGNED -            | HNTB       |
| CHECKED -             | CMT        |
| DRAWN -               | CMT / HNTB |
| REVISED -             |            |
| REVISED -             |            |
| REVISED -             |            |

ILLINOIS APPROACH STRUCTURE  
 FOR NEW I-70 MISSISSIPPI RIVER BRIDGE

STATE OF ILLINOIS  
 DEPARTMENT OF TRANSPORTATION  
 MISSOURI HIGHWAYS  
 AND TRANSPORTATION COMMISSION

**HNTB**  
 715 KIRK DRIVE  
 KANSAS CITY, MO 64105  
 TELEPHONE (816) 472-1201  
 CERTIFICATE OF AUTHORITY  
 NO. 001270

**CMT**  
 CRAWFORD, MURPHY & TILLY, INC.  
 2750 WEST WASHINGTON STREET  
 SPRINGFIELD, IL 62702  
 TELEPHONE (217) 787-8050  
 ENGINEERING CORPORATION - 000631