

F.A. ROUTE	SECTION
999	82-1B-2
FED. AID PROJECT	ILLINOIS
COUNTY	ST. CLAIR
USER NAME = jjo11ff	
PLOT SCALE = *SCALE*	
PLOT DATE = 4/14/2010	
DESIGNED -	HNTB
CHECKED -	CMT
DRAWN -	CMT / HNTB
REVISED -	
REVISED -	
REVISED -	
REVISED -	

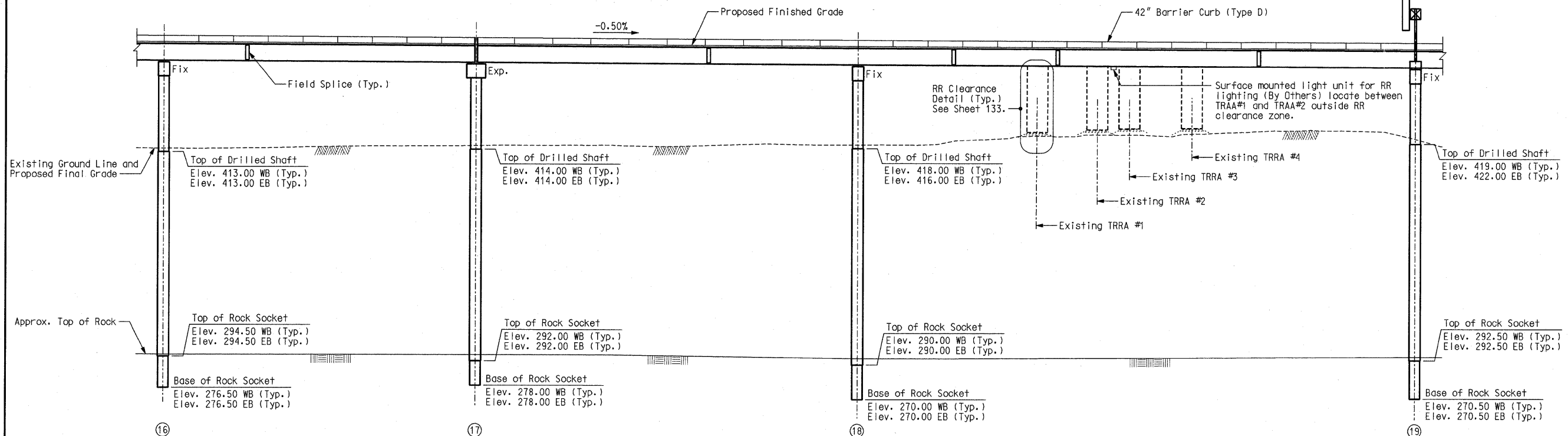
ILLINOIS APPROACH STRUCTURE FOR NEW I-70 MISSISSIPPI RIVER BRIDGE

STATE OF ILLINOIS
DEPARTMENT OF TRANSPORTATION
MISSOURI HIGHWAYS AND TRANSPORTATION COMMISSION

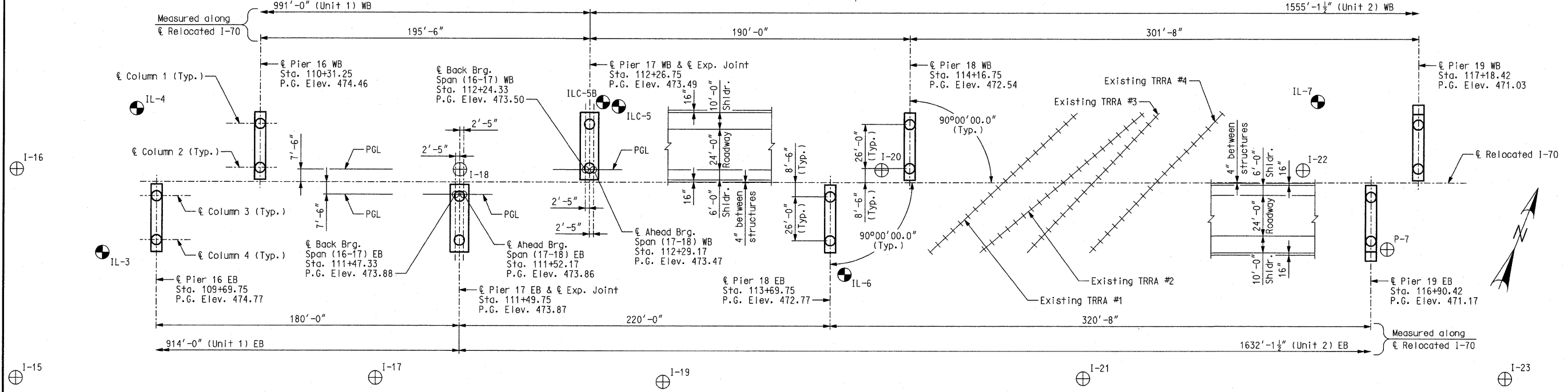
HNTB
715 KIRK DRIVE
KANSAS CITY, MO 64105
TELEPHONE (816) 472-1201
CERTIFICATE OF AUTHORITY NO. 001270

CMT
CRAWFORD, MURPHY & TILLY, INC.
2750 WEST WASHINGTON STREET
SPRINGFIELD, IL 62702
TELEPHONE (217) 787-8050
ENGINEERING CORPORATION - 000631

(195.50'-300.00'-300.00'-195.50') Continuous Composite Plate Girder Spans - WB Unit 1
 (180.00'-277.00'-277.00'-180.00') Continuous Composite Plate Girder Spans - EB Unit 1
 (190.00'-301.67'-297.58'-287.00'-271.00'-207.88') Continuous Composite Plate Girder Spans - WB Unit 2
 (220.00'-320.67'-318.33'-294.25'-271.00'-207.88') Continuous Composite Plate Girder Spans - EB Unit 2



PART GENERAL ELEVATION
(Eastbound Spans Shown)



PART PLAN

SPAN (16-17)
Notes:
 ⊕ Indicates location of borings drilled in 2008 - 2009.
 ⊕ Indicates approximate location of borings drilled prior to 2008.
 All dimensions are horizontal.
 Boring data for the borings drilled in 2008 - 2009 is shown on Sheet Nos. 9 thru 15.
 See sheet no. 108 for light poile blister layout.

GENERAL PLAN AND ELEVATION - SPANS (16-17), (17-18), AND (18-19)

Detailed JUL 2009
Checked JUL 2009

Note: This drawing is not to scale. Follow dimensions.

Sheet No. 4 of 152