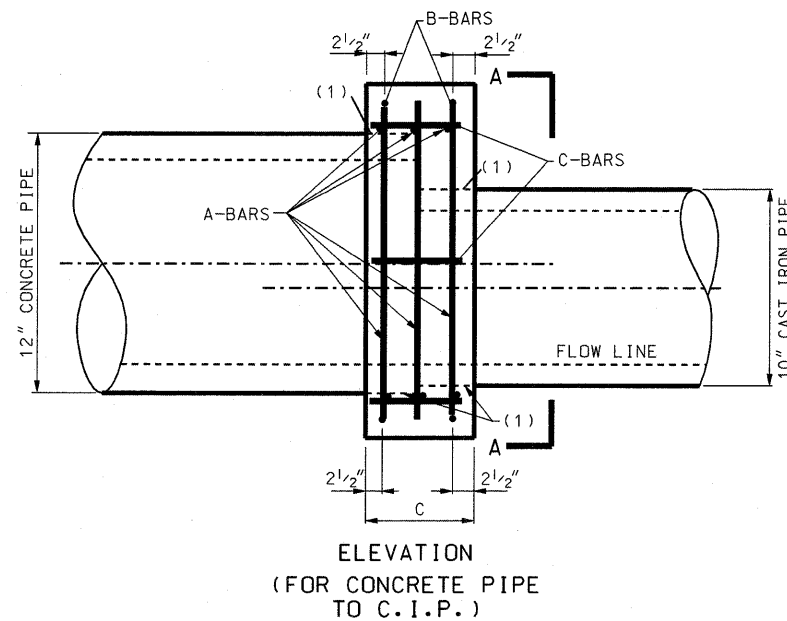


SECTION A-A

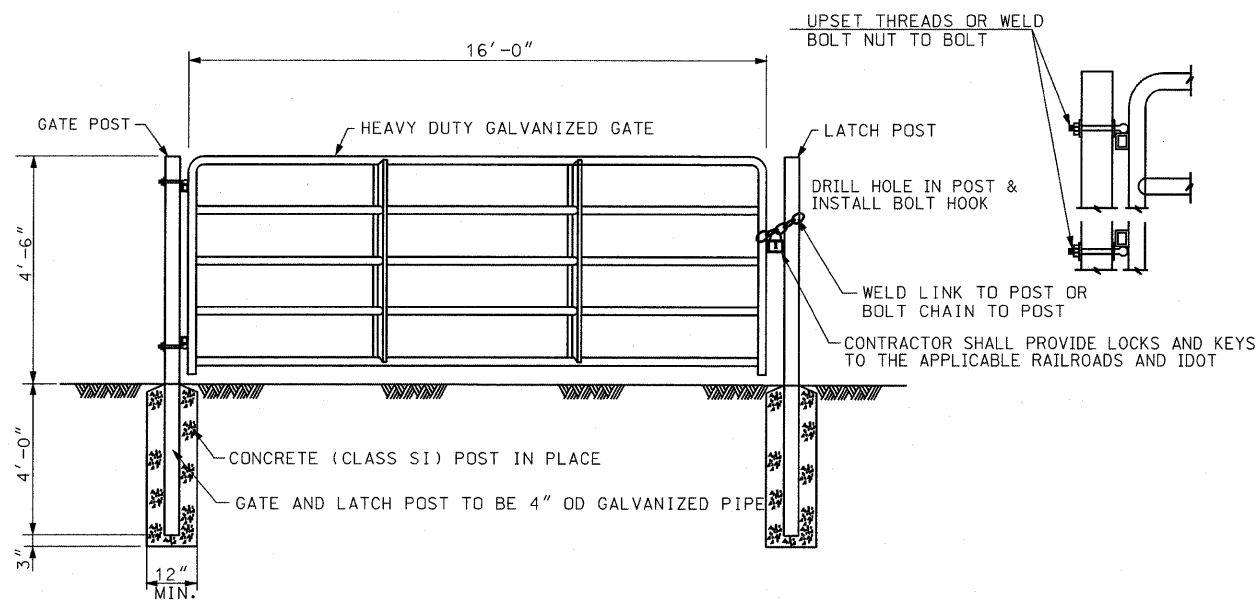
CONCRETE COLLAR



ELEVATION
(FOR CONCRETE PIPE
TO C.I.P.)

TABLE OF DIMENSIONS								
SIZE OF PIPE		DIMENSIONS		LENGTH OF BARS			QUANTITIES	
LARGE (IN.)	SMALL (IN.)	A & B (FT.-IN.)	C (FT.-IN.)	A(#5) 12 REQUIRED (FT.-IN.)	B(#6) 4 REQUIRED (FT.-IN.)	C(#4) 8 REQUIRED (FT.-IN.)	CONCRETE (CU. YD.)	STEEL (LBS.)
12	10	2-8	1-0	2-5	5-10	0-9	0.22	70

(1) ONE LAYER COMMERCIALY AVAILABLE
55-POUND ROLL ROOFING. (COST
INCIDENTAL TO CONCRETE COLLAR)

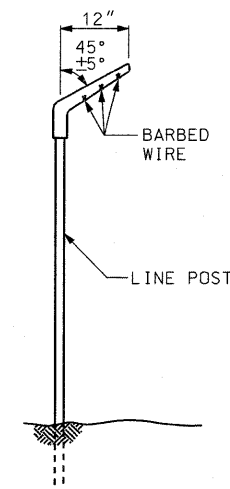


TUBULAR GATE, 4.5' X 16', SINGLE

ACCESS ROAD 1 STA 10+50
ACCESS ROAD 2 STA 13+10
ACCESS ROAD 3 STA 24+00

NOTES:
ADJUST GATE LOCATION SHOWN TO ACCOMMODATE
THE PROPOSED ACCESS ROAD WIDTH OF 15'-0"
OR AS DIRECTED BY THE ENGINEER.

SEE TUBULAR GATE, 4.5' X 16' SINGLE SPECIAL
PROVISION FOR ADDITIONAL REQUIREMENTS.



BARBED WIRE EXTENSION BRACKET
FOR CHAIN LINK FENCE, 7' (SPECIAL)

ACCESS ROAD 1 STA. 15+16.29 RT. TO STA. 15+19.10 RT.
ACCESS ROAD 1 STA. 15+19.10 RT. TO STA. 18+97.82 RT.

NOTE:
SEE CHAIN LINK FENCE, 7' (SPECIAL) SPECIAL
PROVISION FOR ADDITIONAL REQUIREMENTS.

CONTRACT NO. 76D61

F.A. ROUTE 999 SECTION 82-1B-2
FED. AID PROJECT ILLINOIS
COUNTY ST. CLAIR

USER NAME = John Keever
PLOT SCALE = 50.00' / IN.
PLOT DATE = 4/14/2010

DESIGNED - HNTB
CHECKED - CMT
DRAWN - CMT / HNTB
REVISED -
REVISED -
REVISED -
REVISED -

TYPICAL SECTION
ACCESS ROAD & MISC. DETAILS
ILLINOIS APPROACH STRUCTURE
FOR NEW I-70 MISSISSIPPI RIVER BRIDGE

STATE OF ILLINOIS
DEPARTMENT OF TRANSPORTATION
MISSOURI HIGHWAYS
AND TRANSPORTATION COMMISSION

HNTB
715 KIRK DRIVE
KANSAS CITY, MO 64105
TELEPHONE (816) 472-1201
CERTIFICATE OF AUTHORITY
NO. 001270

CMT
CRANFORD, MURPHY & TILLY, INC.
2750 WEST WASHINGTON STREET
SPRINGFIELD, IL 62702
TELEPHONE (217) 787-8050
ENGINEERING CORPORATION - 000631

SHEET 1 OF 1
MISCELLANEOUS DETAILS

ACCESS ROADS
1, 2 AND 3

SHEET 81 OF 81