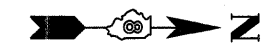
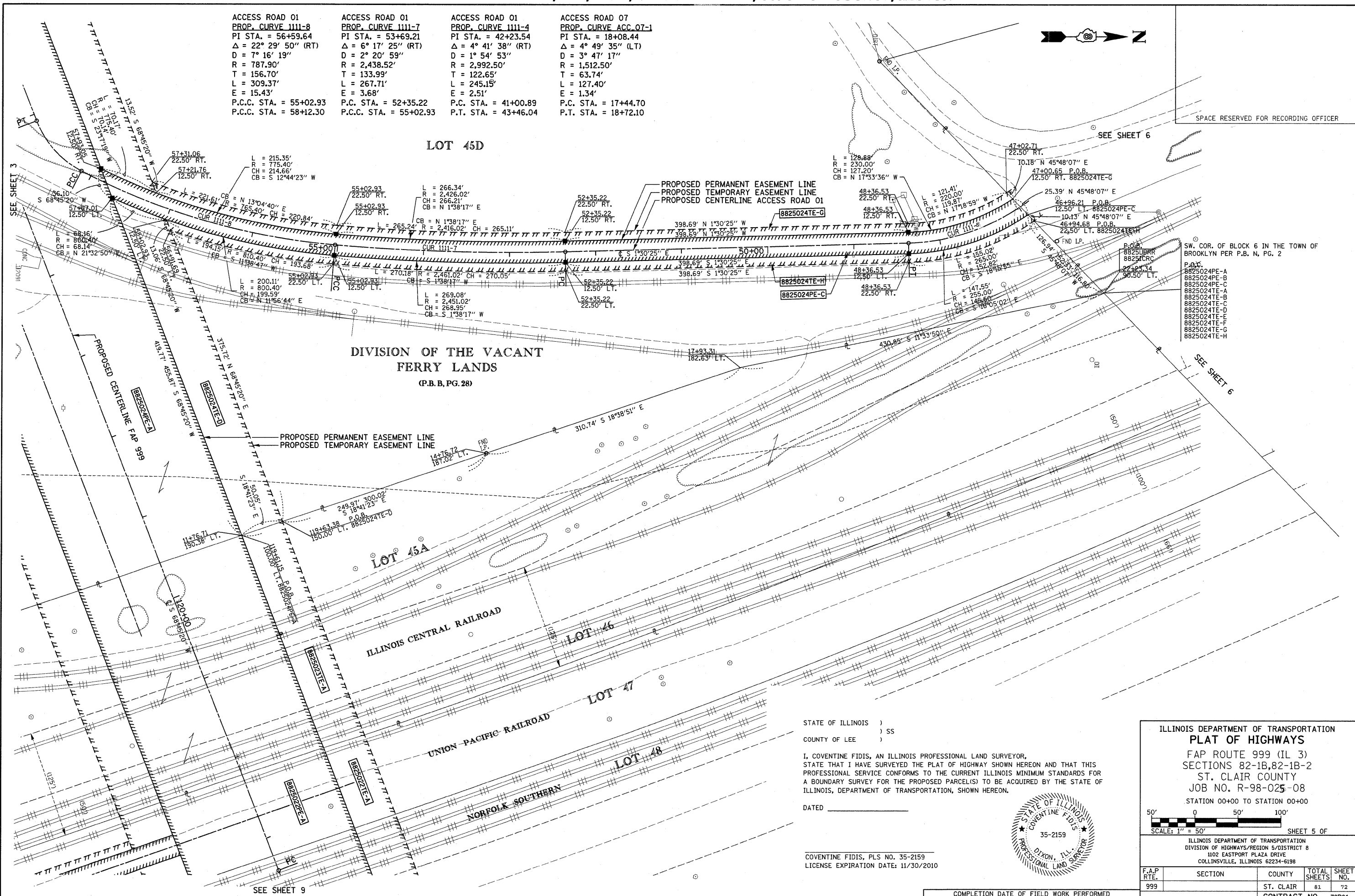


PART OF SECTION 2, T2N, R10W, OF THE 3RD PM, ST. CLAIR COUNTY, ILLINOIS

ACCESS ROAD 01 PROP. CURVE 1111-8 PI STA. = 56+59.64 Δ = 22° 29' 50" (RT) D = 7° 16' 19" R = 787.90' T = 156.70' L = 309.37' E = 15.43' P.C.C. STA. = 55+02.93 P.C. STA. = 58+12.30	ACCESS ROAD 01 PROP. CURVE 1111-7 PI STA. = 53+69.21 Δ = 6° 17' 25" (RT) D = 2° 20' 59" R = 2,438.52' T = 133.99' L = 267.71' E = 3.68' P.C. STA. = 52+35.22 P.C. STA. = 55+02.93	ACCESS ROAD 01 PROP. CURVE 1111-4 PI STA. = 42+23.54 Δ = 4° 41' 38" (RT) D = 1° 54' 53" R = 2,992.50' T = 122.65' L = 245.15' E = 2.51' P.C. STA. = 41+00.89 P.T. STA. = 43+46.04	ACCESS ROAD 07 PROP. CURVE ACC. 07-1 PI STA. = 18+08.44 Δ = 4° 49' 35" (LT) D = 3° 47' 17" R = 1,512.50' T = 63.74' L = 127.40' E = 1.34' P.C. STA. = 17+44.70 P.T. STA. = 18+72.10
---	---	---	---



SPACE RESERVED FOR RECORDING OFFICER



SW. COR. OF BLOCK 6 IN THE TOWN OF BROOKLYN PER P.B. N, PG. 2

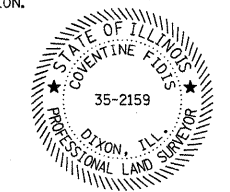
P.O.B.
8825024PE-A
8825024PE-B
8825024PE-C
8825024TE-A
8825024TE-B
8825024TE-C
8825024TE-D
8825024TE-E
8825024TE-F
8825024TE-G
8825024TE-H

STATE OF ILLINOIS)
) SS
COUNTY OF LEE)

I, COVENTINE FIDIS, AN ILLINOIS PROFESSIONAL LAND SURVEYOR, STATE THAT I HAVE SURVEYED THE PLAT OF HIGHWAY SHOWN HEREON AND THAT THIS PROFESSIONAL SERVICE CONFORMS TO THE CURRENT ILLINOIS MINIMUM STANDARDS FOR A BOUNDARY SURVEY FOR THE PROPOSED PARCEL(S) TO BE ACQUIRED BY THE STATE OF ILLINOIS, DEPARTMENT OF TRANSPORTATION, SHOWN HEREON.

DATED _____

COVENTINE FIDIS, PLS NO. 35-2159
LICENSE EXPIRATION DATE: 11/30/2010



ILLINOIS DEPARTMENT OF TRANSPORTATION
PLAT OF HIGHWAYS
FAP ROUTE 999 (IL 3)
SECTIONS 82-1B, 82-1B-2
ST. CLAIR COUNTY
JOB NO. R-98-025-08
STATION 00+00 TO STATION 00+00

SCALE: 1" = 50'

SHEET 5 OF 7

ILLINOIS DEPARTMENT OF TRANSPORTATION
DIVISION OF HIGHWAYS/REGION 5/DISTRICT 8
1102 EASTPORT PLAZA DRIVE
COLLINGSVILLE, ILLINOIS 62234-6198

F.A.P. RTE.	SECTION	COUNTY	TOTAL SHEETS	SHEET NO.
999		ST. CLAIR	81	72

CONTRACT NO. 76D61

COMPLETION DATE OF FIELD WORK PERFORMED	
LAND SURVEY:	ROW STAKING:

FED. ROAD DIST. NO. ILLINOIS FED. AID PROJECT