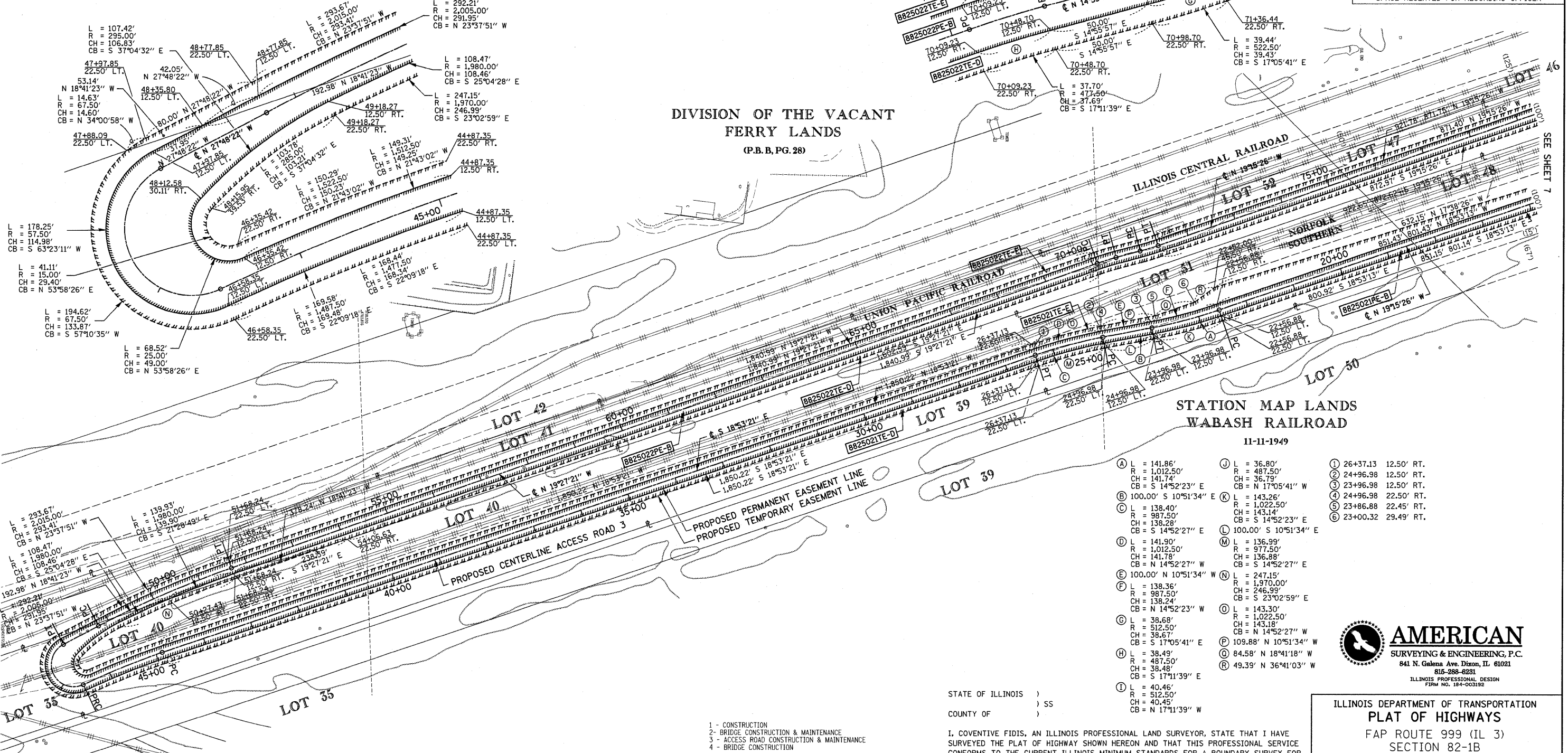


PART OF U.S. SURVEY 627, T2N, R10W, OF THE 4TH PM, ST. CLAIR COUNTY, ILLINOIS

ACCESS ROAD 3 PROP. CURVE ACC-03-2	ACCESS ROAD 3 PROP. CURVE ACC-03-3	ACCESS ROAD 3 PROP. CURVE ACC-03-11	ACCESS ROAD 3 PROP. CURVE ACC-03-13	ACCESS ROAD 3 PROP. CURVE ACC-03-12	ACCESS ROAD 3 PROP. CURVE ACC-03-6	ACCESS ROAD 3 PROP. CURVE ACC-03-7
PI STA. = 23+27.04 Δ = 8° 01' 39" (RT) T = 70.17' L = 140.11' R = 1,000.00' C = 139.99' C.B. = S 14°52'23" E P.C. STA = 22+56.88 P.T. STA = 23+96.98	PI STA. = 25+67.17 Δ = 8° 01' 47" (LT) T = 70.19' L = 140.15' R = 1,000.00' C = 140.03' C.B. = S 14°52'27" E P.C. STA = 24+96.98 P.T. STA = 26+37.13	PI STA. = 45+72.94 Δ = 6° 31' 54" (LT) T = 85.59' L = 171.00' R = 1,500.00' C = 170.91' C.B. = S 22°09'18" E P.C. STA = 44+87.35 P.T. STA = 46+58.35	PI STA. = 68+19.92 Δ = 177° 36' 53" (RT) T = 2,161.57' L = 139.50' R = 45.00' C = 89.98' C.B. = S 63°23'11" W P.C. STA = 46+58.35 P.T. STA = 47+97.85	PI STA. = 50+23.30 Δ = 8° 21' 02" (RT) T = 145.64' L = 290.76' R = 1,995.00' C = 290.50' C.B. = N 23°37'51" W P.C. STA = 48+77.67 P.T. STA = 51+68.42	PI STA. = 70+28.97 Δ = 4° 31' 24" (RT) T = 19.75' L = 39.47' R = 500.00' C = 39.46' C.B. = N 17°11'39" W P.C. STA = 70+09.23 P.T. STA = 70+48.70	PI STA. = 71+17.58 Δ = 4° 19' 29" (LT) T = 18.88' L = 37.74' R = 500.00' C = 37.73' C.B. = N 17°05'41" W P.C. STA = 70+98.70 P.T. STA = 71+36.44



DIVISION OF THE VACANT FERRY LANDS  
(P.B.B, PG. 28)

STATION MAP LANDS  
WABASH RAILROAD

11-11-1949

A L = 141.86' R = 1,012.50' CH = 141.74' CB = S 14°52'23" E	J L = 36.80' R = 487.50' CH = 36.79' CB = N 17°05'41" W	① 26+37.13 12.50' RT.
B L = 100.00' S 10°51'34" E	K L = 143.26' R = 1,022.50' CH = 143.14' CB = S 14°52'23" E	② 24+96.98 12.50' RT.
C L = 138.40' R = 987.50' CH = 138.28' CB = S 14°52'27" E	L L = 100.00' S 10°51'34" E	③ 23+96.98 12.50' RT.
D L = 141.90' R = 1,012.50' CH = 141.78' CB = N 14°52'27" W	M L = 136.99' R = 977.50' CH = 136.88' CB = S 14°52'27" E	④ 24+96.98 22.50' RT.
E 100.00' N 10°51'34" W	N L = 247.15' R = 1,970.00' CH = 246.99' CB = S 23°02'59" E	⑤ 23+86.88 22.45' RT.
F L = 138.36' R = 987.50' CH = 138.24' CB = N 14°52'23" W	O L = 143.30' R = 1,022.50' CH = 143.18' CB = N 14°52'27" W	⑥ 23+00.32 29.49' RT.
G L = 38.68' R = 512.50' CH = 38.67' CB = S 17°05'41" E	P L = 109.88' N 10°51'34" W	
H L = 38.49' R = 487.50' CH = 38.48' CB = S 17°11'39" E	Q L = 84.58' N 18°41'18" W	
I L = 40.46' R = 512.50' CH = 40.45' CB = N 17°11'39" W	R L = 49.39' N 36°41'03" W	

- 1 - CONSTRUCTION
- 2 - BRIDGE CONSTRUCTION & MAINTENANCE
- 3 - ACCESS ROAD CONSTRUCTION & MAINTENANCE
- 4 - BRIDGE CONSTRUCTION

PARCEL NO.	OWNER	TOTAL HOLDING ACRES	FEE SIMPLE ACQUISITION		REMAINDER ACRES	EASEMENTS		PERMANENT TAX NUMBER	PROPERTY ACQUIRED BY	
			ACRES	SQ. FT.		PE = PERMANENT	TE = TEMPORARY			EASEMENT PURPOSE
8825021	NORFOLK SOUTHERN RAILWAY COMPANY TITLE REPORT NO. SC-5551, SC-5580, SC-5557, SC-5564	N/A	N/A	N/A	N/A	PE-A 1.3175	PE-A 57,392	2	01-02.0-400-008 01-02.0-511-002 01-12.0-511-002 01-01.0-511-001 01-01.0-300-025 01-01.0-300-026	
						PE-B 2.0784	PE-B 90,537	3		
						TE-A 0.2555	TE-A 11,128	4		
						TE-B 0.2527	TE-B 11,009	4		
						TE-C 0.1236	TE-C 5,383	4		
8825022	UNION PACIFIC RAILROAD COMPANY, A UTAH CORPORATION TITLE REPORT NO. SC-6001, SC-6022	N/A	N/A	N/A	N/A	PE-A 0.4596	PE-A 20,020	2	01-02.0-506-003 01-02.0-506-004 01-01.0-506-007 01-12.0-506-003 01-12.0-506-004	
						PE-B 1.8008	PE-B 78,445	3		
						TE-A 0.1149	TE-A 5,005	4		
						TE-B 0.0402	TE-B 1,750	4		
						TE-C 0.0460	TE-C 2,004	4		

STATE OF ILLINOIS )  
COUNTY OF ) SS

I, COVENTINE FIDIS, AN ILLINOIS PROFESSIONAL LAND SURVEYOR, STATE THAT I HAVE SURVEYED THE PLAT OF HIGHWAY SHOWN HEREON AND THAT THIS PROFESSIONAL SERVICE CONFORMS TO THE CURRENT ILLINOIS MINIMUM STANDARDS FOR A BOUNDARY SURVEY FOR THE PROPOSED PARCEL(S) TO BE ACQUIRED BY THE STATE OF ILLINOIS, DEPARTMENT OF TRANSPORTATION, SHOWN HEREON.

DATED \_\_\_\_\_

COVENTINE FIDIS, PLS NO. 35-2159  
LICENSE EXPIRATION DATE: 11/30/2010

**AMERICAN**  
SURVEYING & ENGINEERING, P.C.  
841 N. Galena Ave. Dixon, IL 61021  
815-288-6231  
ILLINOIS PROFESSIONAL DESIGN  
FIRM NO. 184-00392

ILLINOIS DEPARTMENT OF TRANSPORTATION  
**PLAT OF HIGHWAYS**  
FAP ROUTE 999 (IL 3)  
SECTION 82-1B  
ST. CLAIR COUNTY  
JOB NO. R-98-026-08  
STATION 18+00 TO STATION 75+00

100' 0 100' 200'  
SCALE: 1" = 100' SHEET 4 OF

F.A.P. RTE.	SECTION	COUNTY	TOTAL SHEETS	SHEET NO.
999		ST. CLAIR	81	71

ILLINOIS DEPARTMENT OF TRANSPORTATION  
DIVISION OF HIGHWAYS/REGION 5/DISTRICT 8  
1102 EASTPORT PLAZA DRIVE  
COLLINGSVILLE, ILLINOIS 62234-6198

COMPLETION DATE OF FIELD WORK PERFORMED  
LAND SURVEY: 5/29/09 ROW STAKING:

CONTRACT NO. 76D61  
FED. ROAD DIST. NO. ILLINOIS FED. AID PROJECT