

MISSISSIPPI RIVER



STATE OF ILLINOIS)
) SS
 COUNTY OF LEE)

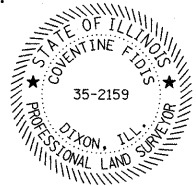
SPACE RESERVED FOR RECORDING OFFICER

AMENDED MAP OF
 TRACT OF LAND
 RESERVED BY THE
 WIGGINS FERRY CO.
 P.B.B. PG. 39

I, COVENTINE FIDIS, AN ILLINOIS PROFESSIONAL LAND SURVEYOR,
 STATE THAT I HAVE SURVEYED THE PLAT OF HIGHWAY SHOWN HEREON AND THAT THIS
 PROFESSIONAL SERVICE CONFORMS TO THE CURRENT ILLINOIS MINIMUM STANDARDS FOR
 A BOUNDARY SURVEY FOR THE PROPOSED PARCEL(S) TO BE ACQUIRED BY THE STATE OF
 ILLINOIS, DEPARTMENT OF TRANSPORTATION, SHOWN HEREON.

DATED _____

COVENTINE FIDIS, PLS NO. 35-2159
 LICENSE EXPIRATION DATE: 11/30/2008

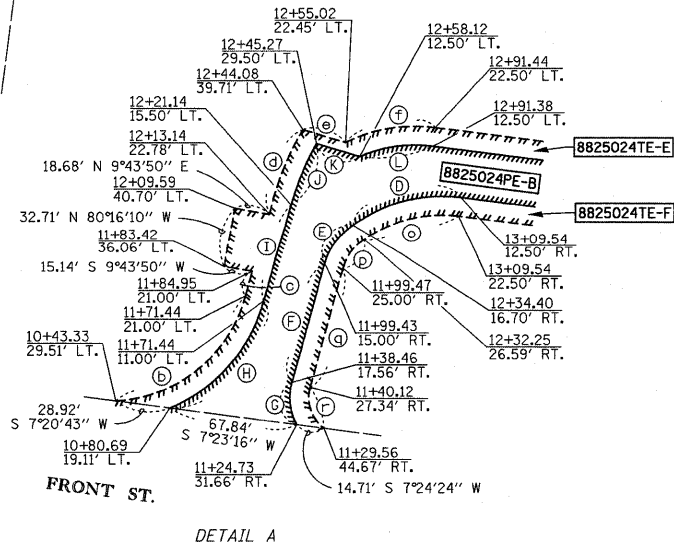
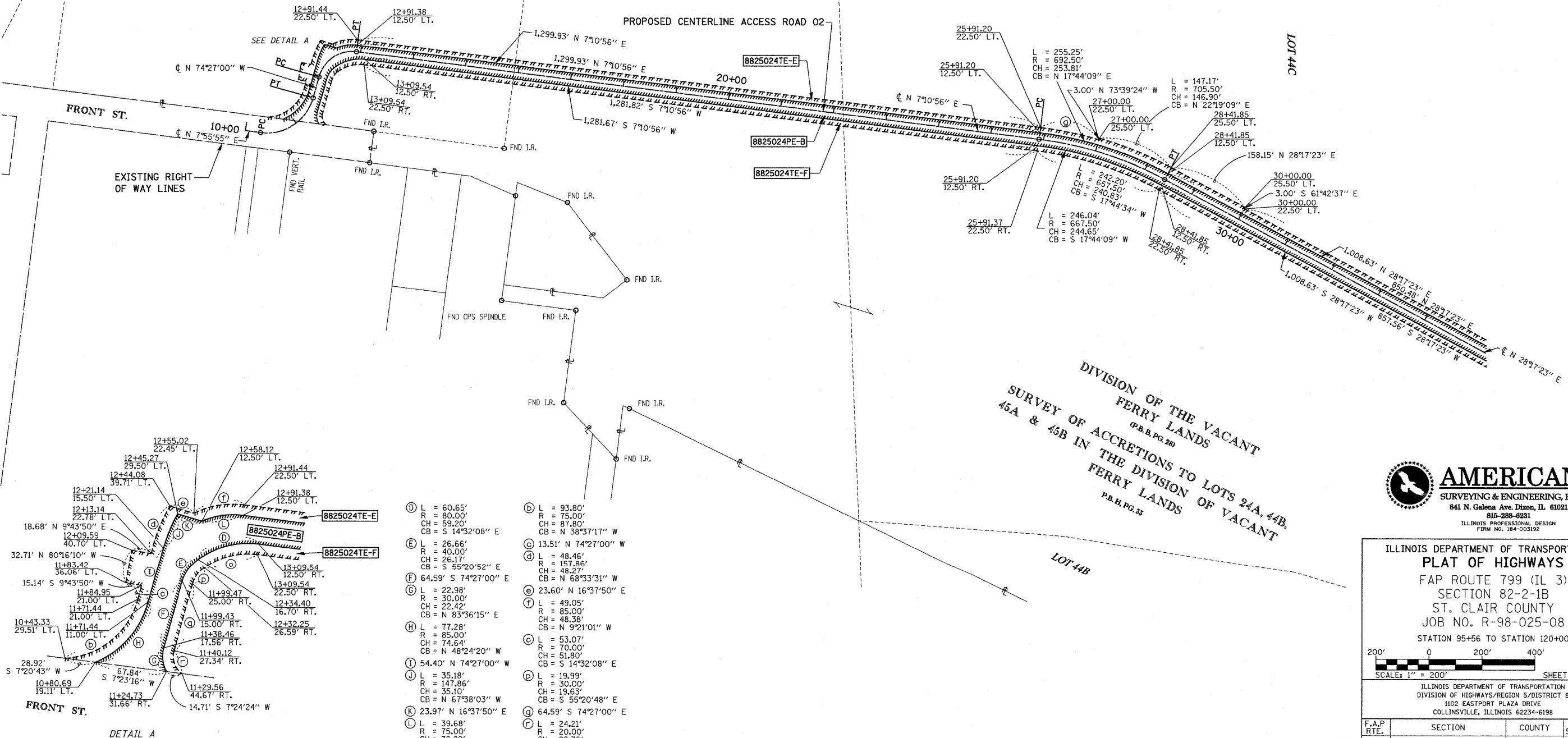


LOT 12

LOT 24C

LOT 44C

DIVISION OF THE VACANT
 FERRY LANDS
 (P.B.B. PG. 20)
 SURVEY OF ACCRETIONS TO LOTS 24A, 44B,
 45A & 45B IN THE DIVISION OF VACANT
 FERRY LANDS
 P.B.B. PG. 35



- Ⓚ L = 60.65'
R = 80.00'
CH = 59.20'
CB = S 14°32'08" E
- Ⓛ L = 26.66'
R = 40.00'
CH = 26.17'
CB = S 55°20'52" E
- Ⓜ L = 64.59' S 74°27'00" W
- Ⓝ L = 22.98'
R = 30.00'
CH = 22.42'
CB = N 83°36'15" E
- Ⓞ L = 77.28'
R = 85.00'
CH = 74.64'
CB = N 48°24'20" W
- Ⓟ L = 54.40' N 74°27'00" W
- Ⓠ L = 35.18'
R = 147.86'
CH = 35.10'
CB = N 67°38'03" W
- Ⓡ L = 23.97' N 16°37'50" E
- Ⓢ L = 39.68'
R = 75.00'
CH = 39.22'
CB = N 7°58'24" W
- Ⓣ L = 93.80'
R = 75.00'
CH = 87.80'
CB = N 38°57'17" W
- Ⓤ L = 13.51' N 74°27'00" W
- Ⓥ L = 48.46'
R = 157.86'
CH = 48.27'
CB = N 68°33'31" W
- Ⓦ L = 23.60' N 16°37'50" E
- Ⓧ L = 49.05'
R = 85.00'
CH = 48.38'
CB = N 9°21'01" W
- Ⓨ L = 53.07'
R = 70.00'
CH = 51.80'
CB = S 14°32'08" E
- Ⓩ L = 19.99'
R = 30.00'
CH = 19.63'
CB = S 55°20'48" E
- ⓐ L = 24.21'
R = 20.00'
CH = 22.76'
CB = N 70°52'34" E
- ⓑ L = 255.25'
R = 692.50'
CH = 253.81'
CB = N 17°44'09" E
- ⓓ L = 147.17'
R = 705.50'
CH = 146.90'
CB = N 22°19'09" E
- ⓔ L = 242.20'
R = 657.50'
CH = 240.83'
CB = S 17°44'34" W
- ⓕ L = 246.04'
R = 667.50'
CH = 244.65'
CB = S 17°44'09" W
- ⓖ L = 158.15' N 28°17'23" E
- ⓗ L = 1.008.63' N 28°17'23" E
- Ⓢ L = 1.008.63' S 28°17'23" W
- Ⓣ L = 850.48' N 28°17'23" E
- Ⓤ L = 851.56' S 28°17'23" W
- Ⓥ L = 3.00' S 61°42'37" E
- Ⓦ L = 3.00' S 61°42'37" E
- Ⓧ L = 3.00' S 61°42'37" E
- Ⓨ L = 3.00' S 61°42'37" E
- Ⓩ L = 3.00' S 61°42'37" E



ILLINOIS DEPARTMENT OF TRANSPORTATION
PLAT OF HIGHWAYS
 FAP ROUTE 799 (IL 3)
 SECTION 82-2-1B
 ST. CLAIR COUNTY
 JOB NO. R-98-025-08
 STATION 95+56 TO STATION 120+00

SCALE: 1" = 200'

ILLINOIS DEPARTMENT OF TRANSPORTATION
 DIVISION OF HIGHWAYS/REGION 5/DISTRICT 8
 1102 EASTPORT PLAZA DRIVE
 COLLINGSVILLE, ILLINOIS 62234-6198

F.A.P. RTE.	SECTION	COUNTY	TOTAL SHEETS	SHEET NO.
799		ST. CLAIR	81	70

COMPLETION DATE OF FIELD WORK PERFORMED
 LAND SURVEY: 5/29/09 ROW STAKING:

CONTRACT NO. 78D61
 FED. ROAD DIST. NO. ILLINOIS FED. AID PROJECT