

CONTRACT NO. 76D61

F.A. ROUTE	SECTION
999	82-1B-2
FED. AID PROJECT	ILLINOIS
COUNTY	ST. CLAIR
USER NAME = John Keeven	
PLOT SCALE = 50,0000' / IN.	
PLOT DATE = 4/14/2010	

DESIGNED -	HNTB
CHECKED -	CMT
DRAWN -	CMT / HNTB
REVISED -	
REVISED -	
REVISED -	

**ROADWAY PROFILES
ACCESS ROADS**

ILLINOIS APPROACH STRUCTURE
FOR NEW I-70 MISSISSIPPI RIVER BRIDGE

STA 75+00 TO STA 82+13.32

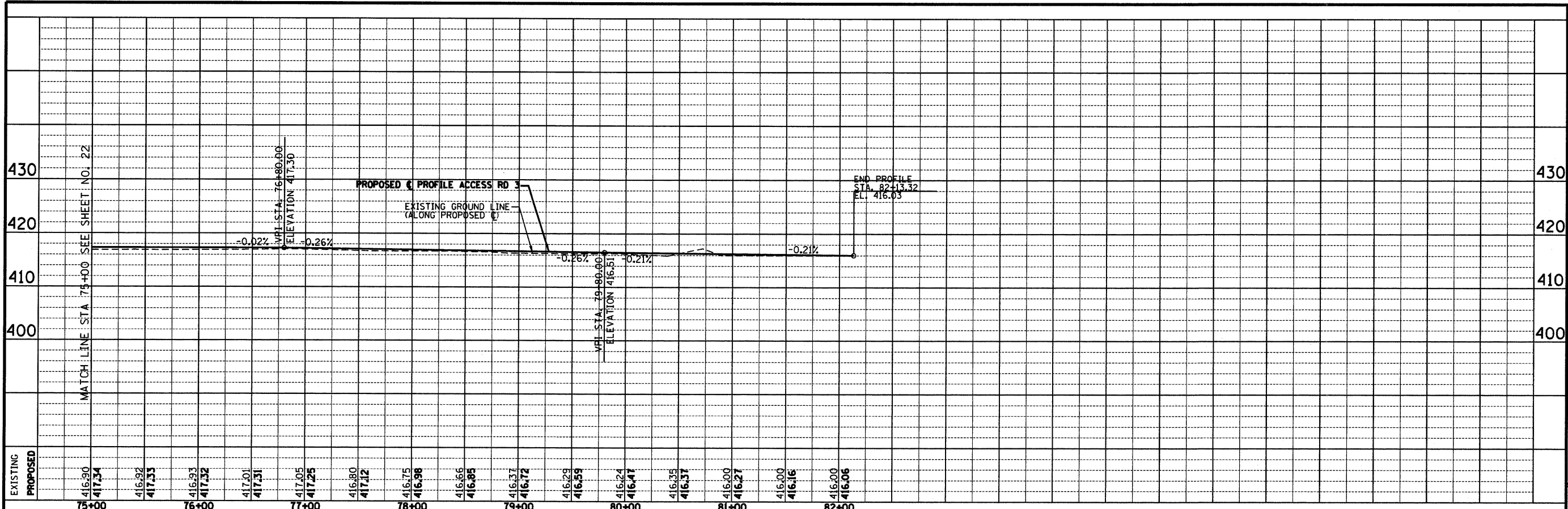
**STATE OF ILLINOIS
DEPARTMENT OF TRANSPORTATION**

**MISSOURI HIGHWAYS
AND TRANSPORTATION COMMISSION**

HNTB
715 KIRK DRIVE
KANSAS CITY, MO 64105
TELEPHONE (816) 472-1201
CERTIFICATE OF AUTHORITY
NO. 001270

CMT
CRAWFORD, MURPHY & TILLY, INC.
2750 WEST WASHINGTON STREET
SPRINGFIELD, IL 62702
TELEPHONE (217) 787-8050
ENGINEERING CORPORATION - 000631

SHEET 37 OF 81



PROPOSED PROFILE - ACCESS ROAD 3