
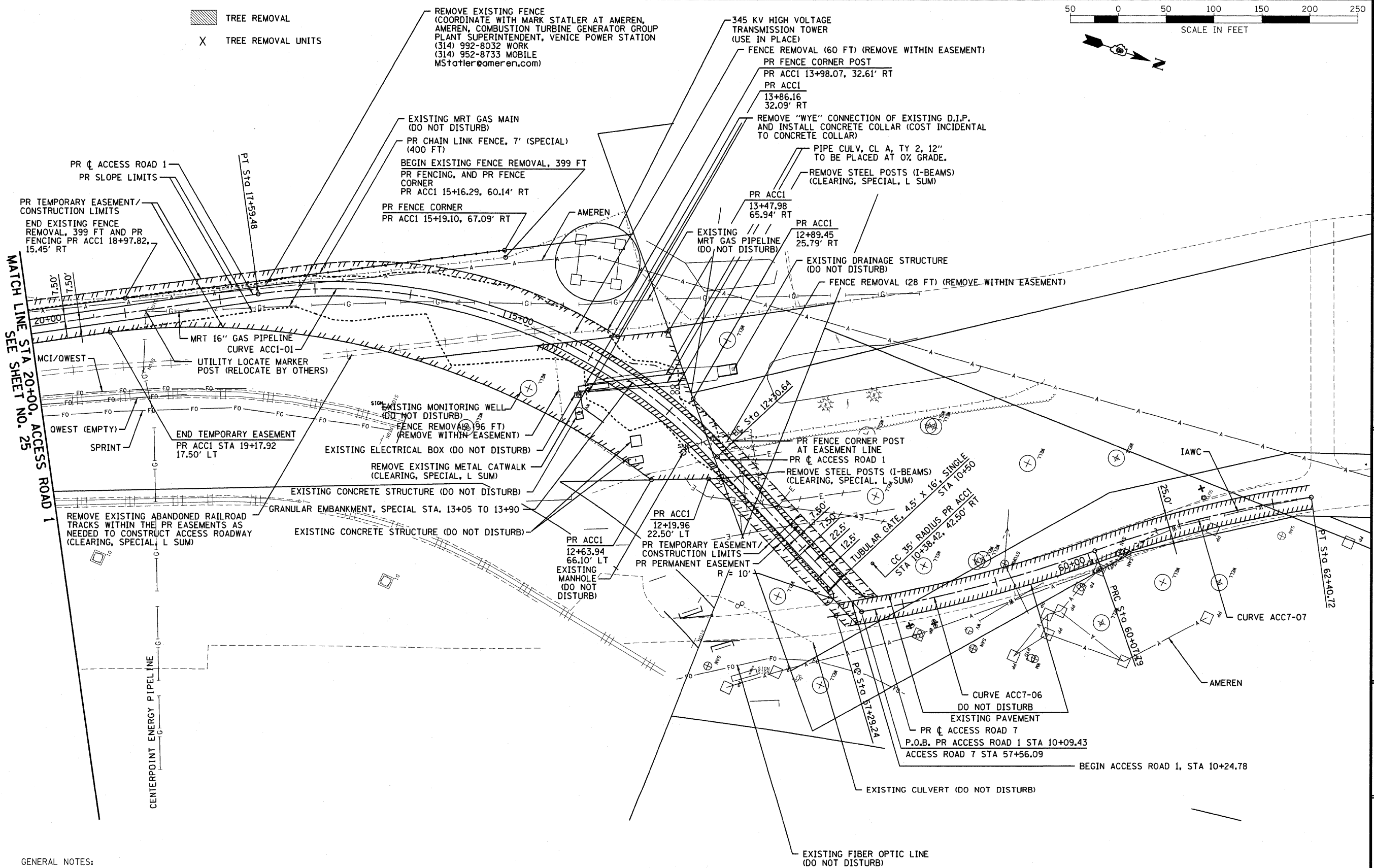
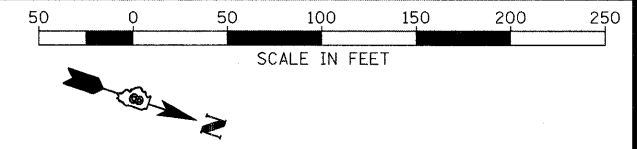
 TREE REMOVAL
 TREE REMOVAL UNITS



CONTRACT NO. 76D61	
F.A. ROUTE	SECTION
999	82-1B-2
FED. AID PROJECT	ILLINOIS
COUNTY	ST. CLAIR
USER NAME = John Keaven	
PLOT SCALE = 50,0000' / IN.	
PLOT DATE = 4/14/2010	
DESIGNED -	HNTB
CHECKED -	CMT
DRAWN -	CMT / HNTB
REVISED -	
REVISED -	
REVISED -	
REVISED -	

PROPOSED PLAN
ACCESS ROADS
 ILLINOIS APPROACH STRUCTURE
 FOR NEW I-70 MISSISSIPPI RIVER BRIDGE
 STA. 10 + 09.43 TO STA. 20 + 00
 STA. 57 + 56.09 TO STA. 62 + 40.72

STATE OF ILLINOIS
 DEPARTMENT OF TRANSPORTATION
 MISSOURI HIGHWAYS
 AND TRANSPORTATION COMMISSION

HNTB
 715 KIRK DRIVE
 KANSAS CITY, MO 64105
 TELEPHONE (816) 472-1201
 CERTIFICATE OF AUTHORITY
 NO. 001270

CMT
 CRAWFORD, MURPHY & TILLY, INC.
 2750 WEST WASHINGTON STREET
 SPRINGFIELD, IL 62702
 TELEPHONE (217) 787-8050
 ENGINEERING CORPORATION - 000651

- GENERAL NOTES:
- CONTRACTOR SHALL CONTACT NORFOLK SOUTHERN (NS), TERMINAL RAILROAD ASSOCIATION OF ST. LOUIS (TRRA), KANSAS CITY SOUTHERN RAILWAY (KCS) AND UNION PACIFIC RAILWAY COMPANY (UP) DIRECTLY FOR LOCATION OF RAILROAD UTILITIES ON RAILROAD RIGHT-OF-WAY.
 - CONTRACTOR SHALL PROVIDE A SECURED FENCED ENCLOSURE TO THE EXISTING FENCE LINE AT THE END OF EACH DAY.

SHEET 10 OF 10
ROADWAY PLANS
ACCESS ROADS 1 AND 7