

ACCESS ROAD 7 P.I. COORDINATES

CURVE ACC7-06 N 14,051,638.89 E 2,447,230.72
 CURVE ACC7-07 N 14,051,824.20 E 2,447,053.30

ACCESS ROAD 7 CURVE DATA

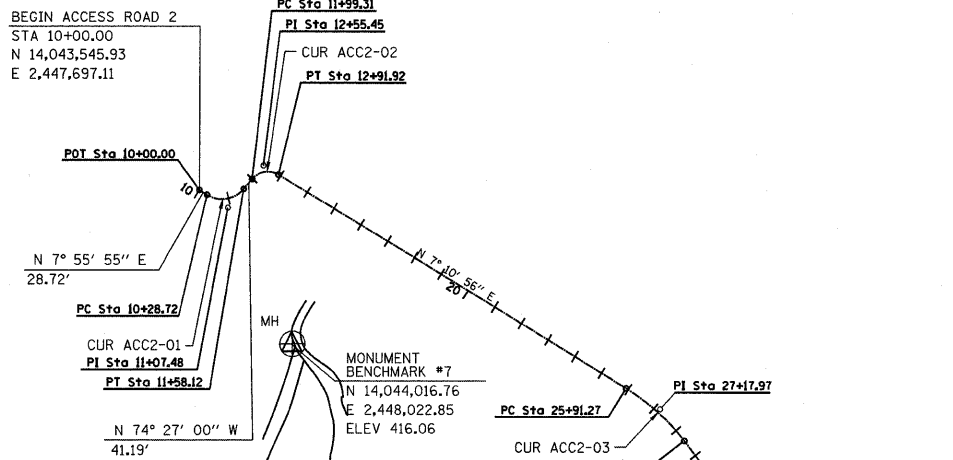
PROP. CURVE ACC7-06 PI STA. = 58+68.95 Δ = 11° 00' 09" (LT) D = 3° 57' 00" R = 1,450.52' T = 139.70' L = 278.54' E = 6.71' e = N.C. T.R. = N/A S.E. RUN = N/A P.C. STA. = 57+29.24 P.T. STA. = 60+07.79	PROP. CURVE ACC7-07 PI STA. = 61+24.64 Δ = 11° 23' 29" (RT) D = 4° 53' 26" R = 1,171.58' T = 116.85' L = 232.93' E = 5.81' e = N.C. T.R. = N/A S.E. RUN = N/A P.C. STA. = 60+07.79 P.T. STA. = 62+40.72
---	---

ACCESS ROAD 1 P.I. COORDINATES

CUR ACC1-01 N 14,051,075.22 E 2,447,095.28	CUR ACC1-05 N 14,048,164.99 E 2,448,604.17
CUR ACC1-02 N 14,050,158.61 E 2,447,676.19	CUR ACC1-06 N 14,047,551.95 E 2,448,620.29
CUR ACC1-03 N 14,048,633.10 E 2,448,372.93	CUR ACC1-07 N 14,047,262.27 E 2,448,596.05
CUR ACC1-04 N 14,048,303.97 E 2,448,494.54	CUR ACC1-08 N 14,047,085.98 E 2,448,505.14

ACCESS ROAD 1 CURVE DATA

PROP. CURVE ACC1-01 PI STA. = 15+17.51 Δ = 55° 05' 29" (LT) D = 10° 25' 03" R = 550.00' T = 286.87' L = 528.84' E = 70.32' e = N.C. T.R. = N/A S.E. RUN = N/A P.C. STA. = 12+30.64 P.T. STA. = 17+59.48	PROP. CURVE ACC1-03 PI STA. = 42+34.67 Δ = 4° 16' 08" (RT) D = 1° 54' 35" R = 3,000.00' T = 111.81' L = 223.52' E = 2.08' e = N.C. T.R. = N/A S.E. RUN = N/A P.C. STA. = 41+22.85 P.T. STA. = 43+46.37	PROP. CURVE ACC1-05 PI STA. = 47+61.52 Δ = 36° 45' 32" (RT) D = 23° 37' 38" R = 242.50' T = 80.57' L = 155.58' E = 13.04' e = N.C. T.R. = N/A S.E. RUN = N/A P.C. STA. = 46+80.95 P.T. STA. = 48+36.53	PROP. CURVE ACC1-07 PI STA. = 56+59.63 Δ = 22° 29' 50" (RT) D = 7° 16' 19" R = 787.90' T = 156.70' L = 309.37' E = 15.43' e = N.C. T.R. = N/A S.E. RUN = N/A P.C. STA. = 55+02.93 P.T. STA. = 58+12.30
---	--	--	--

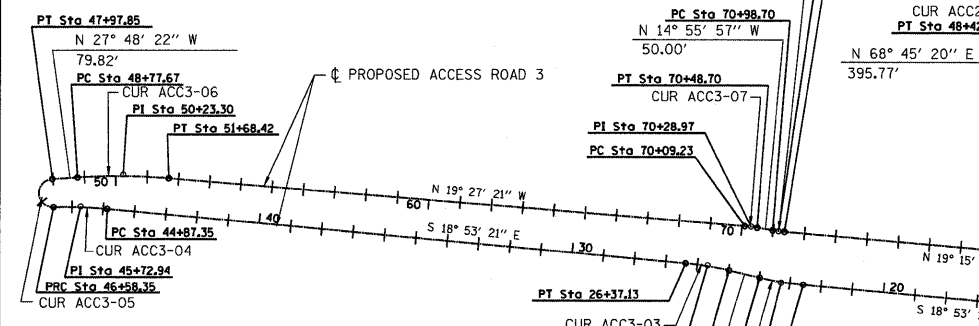


ACCESS ROAD 3 P.I. COORDINATES

CURVE ACC3-01 N 14,047,487.62 E 2,449,397.98
 CURVE ACC3-02 N 14,046,422.81 E 2,449,762.28
 CURVE ACC3-03 N 14,046,186.76 E 2,449,807.56

ACCESS ROAD 3 CURVE DATA

PROP. CURVE ACC3-01 PI STA. = 12+35.09 Δ = 105° 26' 34" (LT) D = 134° 48' 49" R = 42.50' T = 55.83' L = 78.21' E = 27.67' e = N.C. T.R. = N/A S.E. RUN = N/A P.C. STA. = 11+79.26 P.T. STA. = 12+57.47	PROP. CURVE ACC3-02 PI STA. = 23+27.04 Δ = 8° 01' 39" (RT) D = 5° 43' 46" R = 1,000.00' T = 70.17' L = 140.15' E = 2.46' e = N.C. T.R. = N/A S.E. RUN = N/A P.C. STA. = 22+56.88 P.T. STA. = 23+96.98	PROP. CURVE ACC3-03 PI STA. = 25+67.17 Δ = 8° 01' 47" (LT) D = 5° 43' 46" R = 1,000.00' T = 70.19' L = 140.15' E = 2.46' e = N.C. T.R. = N/A S.E. RUN = N/A P.C. STA. = 24+96.98 P.T. STA. = 26+37.13
--	---	---



ACCESS ROAD 3 CURVE DATA

PROP. CURVE ACC3-04 PI STA. = 45+72.94 Δ = 6° 31' 54" (LT) D = 3° 49' 11" R = 1,500.00' T = 85.59' L = 171.00' E = 2.44' e = N.C. T.R. = N/A S.E. RUN = N/A P.C. STA. = 44+87.35 P.T. STA. = 46+58.35	PROP. CURVE ACC3-05 PI STA. = 68+19.92 Δ = 127° 19' 26" D = 127° 19' 26" R = 45.00' T = 2,161.57' L = 139.50' E = 2,117.04' e = N.C. T.R. = N/A S.E. RUN = N/A P.C. STA. = 46+58.35 P.T. STA. = 47+97.85	PROP. CURVE ACC3-06 PI STA. = 50+23.30 Δ = 8° 21' 02" (RT) D = 2° 52' 19" R = 1,995.00' T = 145.64' L = 290.76' E = 5.31' e = N.C. T.R. = N/A S.E. RUN = N/A P.C. STA. = 48+77.67 P.T. STA. = 51+68.42
---	--	--

ACCESS ROAD 3 P.I. COORDINATES

CURVE ACC3-04 N 14,044,288.79 E 2,450,456.98
 CURVE ACC3-05 N 14,042,259.20 E 2,451,421.61
 CURVE ACC3-06 N 14,044,370.59 E 2,450,308.10
 CURVE ACC3-07 N 14,046,262.22 E 2,449,639.89
 CURVE ACC3-08 N 14,046,347.86 E 2,449,617.05

ACCESS ROAD 2 P.I. COORDINATES

CUR ACC2-01 N 14,043,652.38 E 2,447,711.95
 CUR ACC2-02 N 14,043,699.58 E 2,447,542.30
 CUR ACC2-03 N 14,045,170.14 E 2,447,727.61
 CUR ACC2-04 N 14,046,310.44 E 2,448,341.33
 CUR ACC2-05 N 14,047,028.16 E 2,448,634.23

ACCESS ROAD 2 CURVE DATA

PROP. CURVE ACC2-01 PI STA. = 11+07.48 Δ = 82° 22' 55" (LT) D = 63° 39' 43" R = 90.00' T = 78.76' L = 129.41' E = 29.60' e = N.C. T.R. = N/A S.E. RUN = N/A P.C. STA. = 10+28.72 P.T. STA. = 11+58.12	PROP. CURVE ACC2-02 PI STA. = 12+55.45 Δ = 81° 37' 56" (RT) D = 88° 08' 50" R = 65.00' T = 56.14' L = 92.61' E = 20.89' e = N.C. T.R. = N/A S.E. RUN = N/A P.C. STA. = 11+99.31 P.T. STA. = 12+91.92	PROP. CURVE ACC2-03 PI STA. = 27+17.97 Δ = 21° 06' 27" (RT) D = 8° 25' 33" R = 680.00' T = 126.69' L = 250.51' E = 11.70' e = N.C. T.R. = N/A S.E. RUN = N/A P.C. STA. = 25+91.27 P.T. STA. = 28+41.78	PROP. CURVE PRACCO2-4 PI STA. = 40+10.06 Δ = 6° 05' 22" (LT) D = 1° 54' 35" R = 3,000.00' T = 159.58' L = 318.85' E = 4.24' e = N.C. T.R. = N/A S.E. RUN = N/A P.C. STA. = 38+50.48 P.T. STA. = 41+69.33	PROP. CURVE ACC2-05 PI STA. = 47+84.94 Δ = 46° 33' 20" (RT) D = 38° 11' 50" R = 150.00' T = 64.53' L = 121.88' E = 13.29' e = N.C. T.R. = N/A S.E. RUN = N/A P.C. STA. = 47+20.41 P.T. STA. = 48+42.29
---	--	--	--	--

B.M. #10 SET IN CONCRETE MEDIAN ON THE EAST SIDE OF ILLINOIS ROUTE 3 (ST. CLAIR AVE) BETWEEN TWO RAILROAD BRIDGES, APPROXIMATELY 0.1 MILES SOUTH OF 1ST STREET (IN FRONT OF 301 S. CLAIR AVE WAREHOUSE & STORE FIXTURE CO.)

B.M. #11 SET IN THE BACK OF A 4.5 FOOT CONCRETE WALK (END OF WALK), LOCATED ON THE WEST SIDE OF ILLINOIS ROUTE 3 APPROXIMATELY 0.3 MILES SOUTH OF CANAL STREET.



NOTE:
ACCESS ROAD 4, 5, AND 6 BY OTHERS

CONTRACT NO. 76D61

F.A. ROUTE	SECTION
999	82-1B-2
FED. AID PROJECT	ILLINOIS
COUNTY	ST. CLAIR
USER NAME = John Keeven	
PLOT SCALE = 300.0000' / IN	
PLOT DATE = 4/14/2010	

DESIGNED - HNTB
CHECKED - CMT
DRAWN - CMT / HNTB
REVISED -
REVISED -
REVISED -
REVISED -

ALIGNMENT SHEET
 ACCESS ROADS
 ILLINOIS APPROACH STRUCTURE
 FOR NEW I-70 MISSISSIPPI RIVER BRIDGE

STATE OF ILLINOIS
 DEPARTMENT OF TRANSPORTATION
 MISSOURI HIGHWAYS
 AND TRANSPORTATION COMMISSION

HNTB
 715 KIRK DRIVE
 KANSAS CITY, MO 64105
 TELEPHONE (816) 472-1201
 CERTIFICATE OF AUTHORITY
 NO. 001270

CMT
 CRAWFORD, MURPHY & TILLY, INC.
 2750 WEST WASHINGTON STREET
 SPRINGFIELD, IL 62702
 TELEPHONE (217) 787-8050
 ENGINEERING CORPORATION - 000631