

CONTRACT NO. 76D61

F.A. ROUTE	SECTION
999	82-1B-2
FED. AID PROJECT	ILLINOIS
COUNTY	ST. CLAIR
USER NAME = John Keaven	
PLOT SCALE = 1:0000' / IN.	
PLOT DATE = 4/14/2010	
DESIGNED -	HNTB
CHECKED -	CMT
DRAWN -	CMT / HNTB
REVISED -	
REVISED -	
REVISED -	
REVISED -	

TYPICAL SECTION ACCESS ROAD 3 CROSSING DETAILS	ILLINOIS APPROACH STRUCTURE FOR NEW I-70 MISSISSIPPI RIVER BRIDGE
	STA. 47 + 36.90 ACCESS ROAD 3

STATE OF ILLINOIS DEPARTMENT OF TRANSPORTATION	MISSOURI HIGHWAYS AND TRANSPORTATION COMMISSION
---	--

**HNTB**  
715 KIRK DRIVE  
KANSAS CITY, MO 64105  
TELEPHONE (816) 472-1201  
CERTIFICATE OF AUTHORITY  
NO. 001270

**CMT**  
CRANFORD, MURPHY & TILLY, INC.  
2750 WEST WASHINGTON STREET  
SPRINGFIELD, IL 62702  
TELEPHONE (217) 787-8050  
ENGINEERING CORPORATION - 000631

SHEET 7 OF 81

**RUBBER FLANGE WAY NOTES**

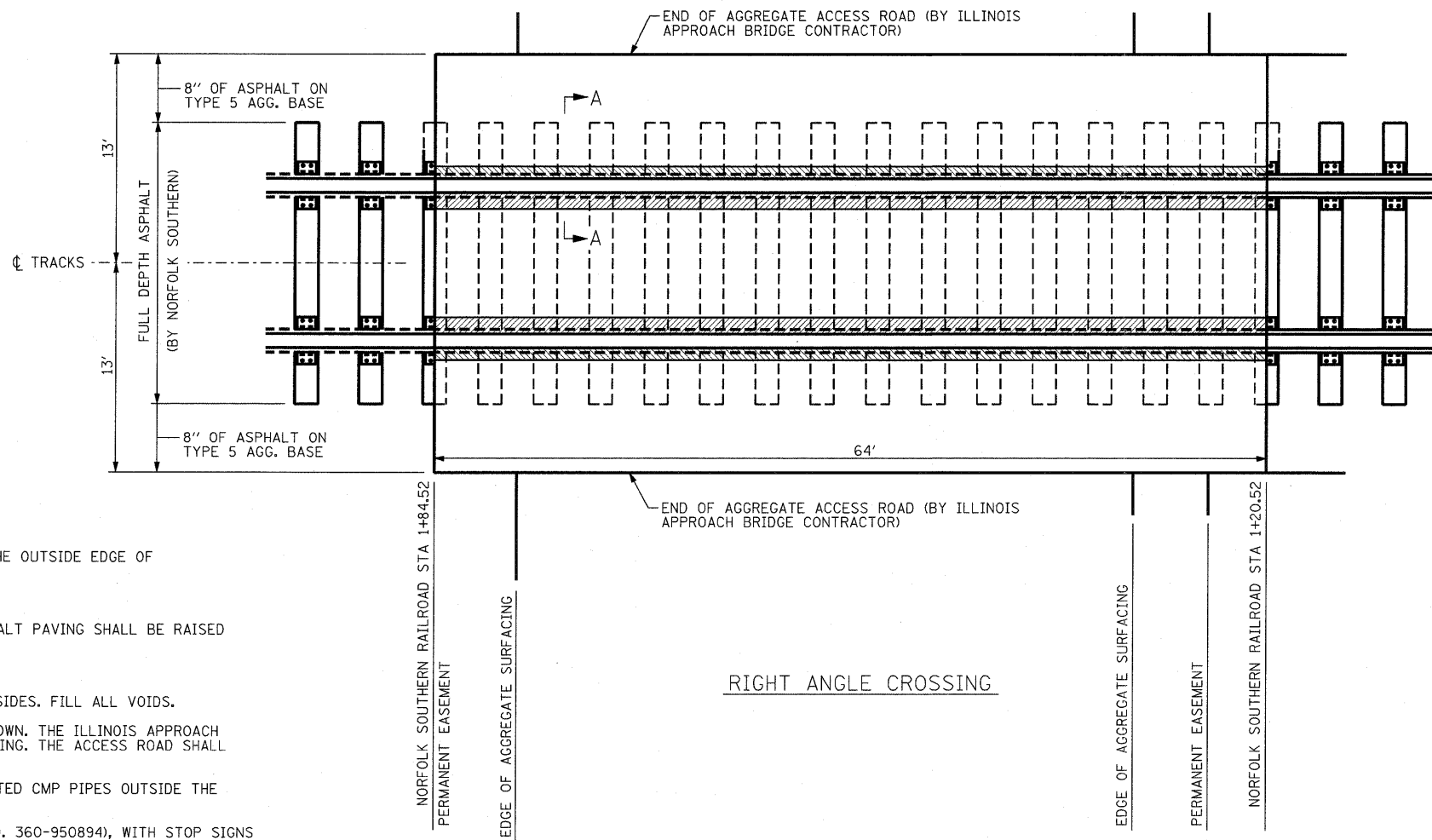
- CLEAN BASE, WEB AND UNDER THE HEAD OF THE RAIL
- FASTEN LENGTHS TOGETHER WITH END CLIPS AND LAY RUBBER AGAINST THE RAIL
- INSTALL CLIPS UNDER BOTH RAILS BETWEEN EVERY TIE IN THE CROSSING
- RUBBER FLANGE WAY FOR 100 LB. RAIL 270 995291
- RUBBER FLANGEWAY FOR 110RE THROUGH 115RE RAIL 270 991789
- RUBBER FLANGEWAY FOR 132RE THROUGH 141AB RAIL 270 008791
- (INCLUDES ALL HARDWARE AND IS FURNISHED IN 8 FT. TRACK SECTIONS.)

**TIE PLATE NOTES**

- WORN PATCHES MUST BE REPLACED WHEN CROSSING IS RENEWED.
- STANDARD TIE PLATES TO BE USED FOR 6" BASE RAIL ARE 7 3/4" x 14 3/4".

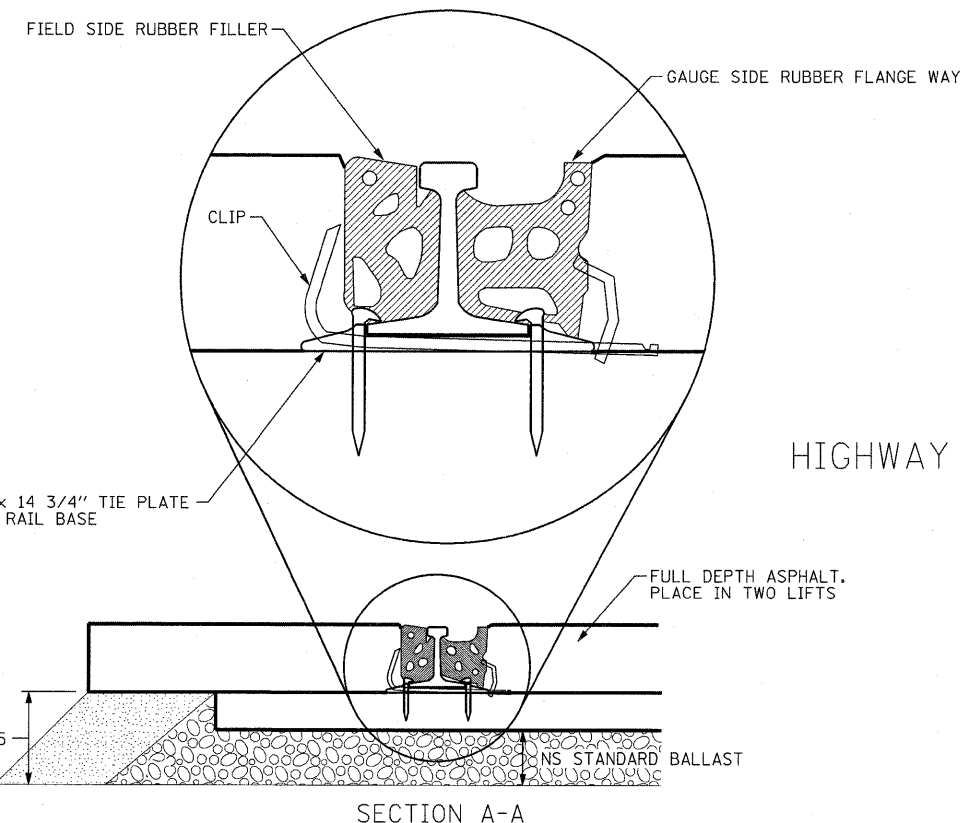
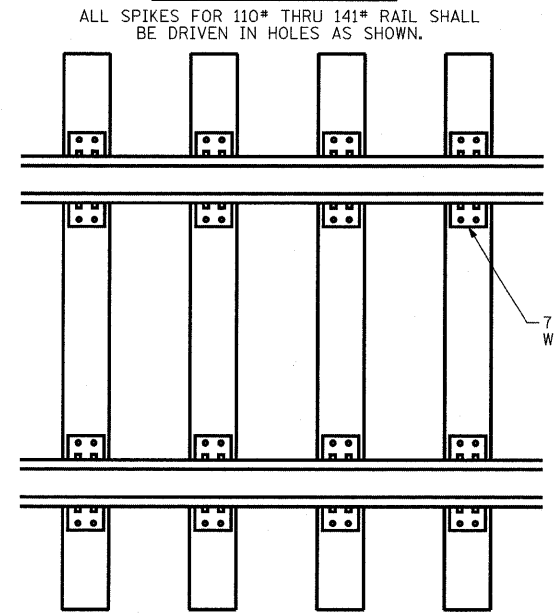
**GENERAL NOTES**

- WHERE HIGHWAY OR STREET HAVE SEPERATE SIDEWALKS, THE ENTIRE WIDTH OF CROSSING TO THE OUTSIDE EDGE OF SIDEWALK, WILL BE PAVED, WHERE PRACTICAL.
- WHEN NECESSARY PROVIDE DRAINAGE BETWEEN TRACKS.
- TO ALLOW FOR COMPACTION OF PAVING UNDER VEHICULAR TRAFFIC, THE SURFACE OF THE ASPHALT PAVING SHALL BE RAISED 3/8" ABOVE THE TOP OF THE RUBBER FLANGE WAYS FOR THE WIDTH OF THE ROADWAY.
- IN FULL DEPTH CROSSINGS, LAY ASPHALT IN TWO LIFTS.
- JAM STONE OR ASPHALT UNDER RUBBER FLANGE WAY BETWEEN TIES - BOTH FIELD AND GAUGE SIDES. FILL ALL VOIDS.
- NORFOLK SOUTHERN CREWS WILL INSTALL RAILROAD CROSSING AND ASPHALT TO THE LIMITS SHOWN. THE ILLINOIS APPROACH BRIDGE CONTRACTOR SHALL CONSTRUCT THE AGGREGATE ACCESS ROADS TO THE ASPHALT CROSSING. THE ACCESS ROAD SHALL BE GRADED TO PROVIDE POSITIVE DRAINAGE AWAY FROM THE CROSSING AND ACCESS ROAD.
- NORFOLK SOUTHERN RAILROAD TRACK FORCES WILL INSTALL 2-4" DIAMETER, 64' LONG PERFORATED CMP PIPES OUTSIDE THE BALLAST TOE ON EITHER SIDE AND PARALLEL TO THE CROSSING AS AN UNDERDRAIN.
- NORFOLK SOUTHERN RAILROAD TRACK FORCES WILL INSTALL A PRIVATE CROSSING (NS STOCK NO. 360-950894), WITH STOP SIGNS (NS STOCK NO. 360-958452) ON T-POSTS (NS STOCK NO. 135-486109) PLACED ON EITHER SIDE OF THE CROSSING.



RIGHT ANGLE CROSSING

**SPIKING PATTERN**



CROSSING LOCATION  
ACCESS ROAD 3 STA 47+36.90  
NORFOLK SOUTHERN RAILWAY COMPANY  
HIGHWAY GRADE CROSSING (BY NORFOLK SOUTHERN RAILROAD)  
ASPHALT PAVING  
WITH RUBBER FLANGE WAY

SHEET 3 OF 3  
TYPICAL SECTIONS  
ACCESS ROAD 3  
CROSSING DETAILS