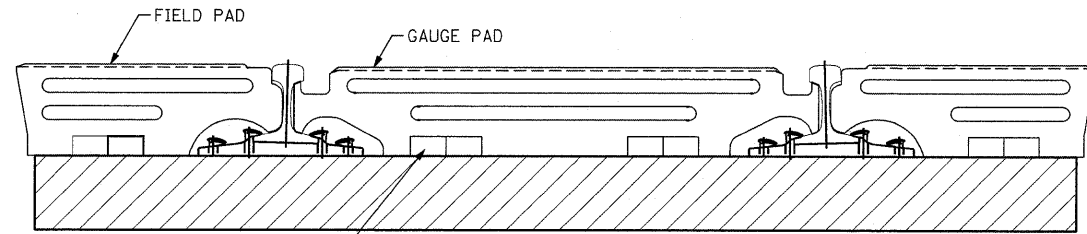
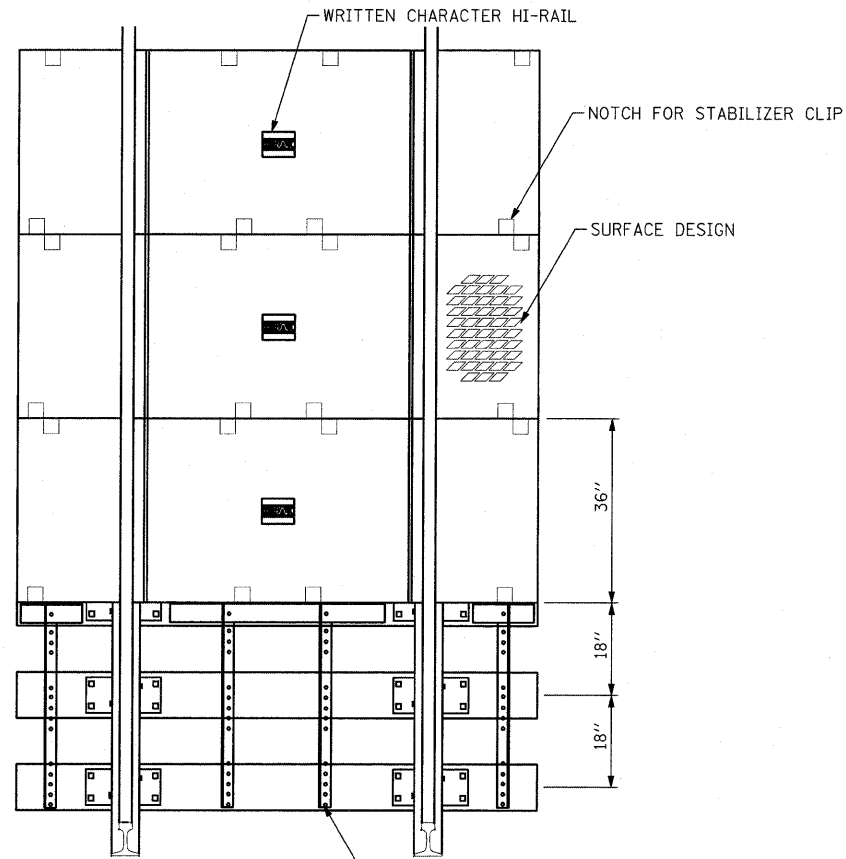


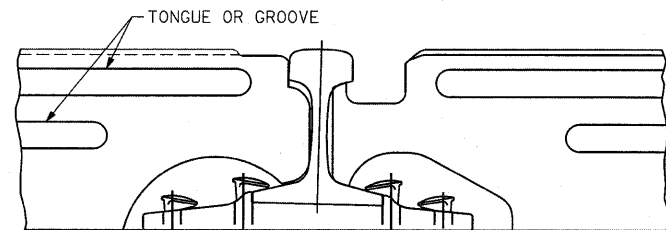
SYSTEM WOOD TIES NO FB.DGN



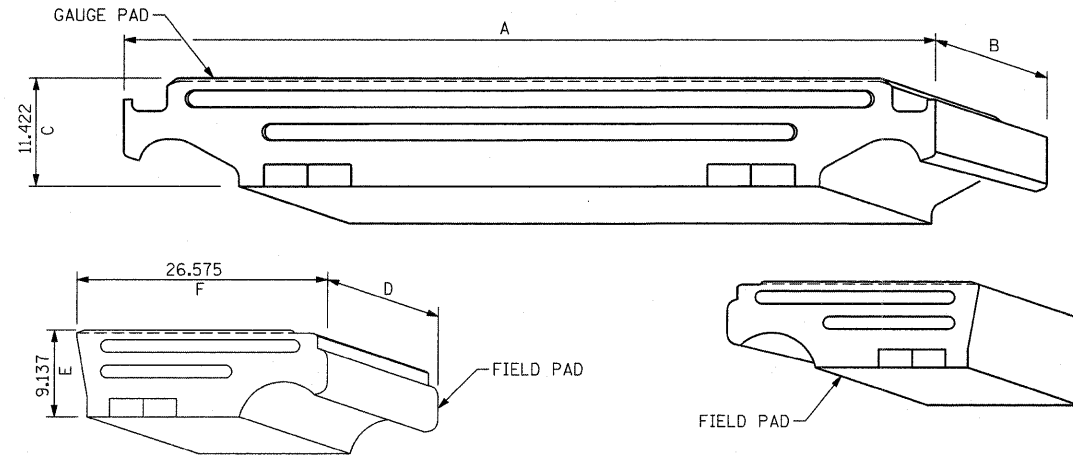
CROSS SECTIONAL VIEW



VIEW FROM THE TOP



SYSTEM WOOD TIES NO FB 2.DGN



Weight of Rail	Weight (lbs)			Dimensions (in.)								
	Tie Length			Gauge Pad	Tie Length			E	D	A	C	B
	8'6"	9'0"	10'		8'6"	9'0"	10'					
100	204			529	22 1/2			7	36	58 1/4	7	36
112-122	225	270	311	586	22 1/2	25 1/4	30	7 3/4	36	58 1/4	7 3/4	36
131-140	238	280	326	630	22 1/2	25 1/4	30	8 3/16	36	58 1/4	8 3/16	36

NOTES:

- TIES ARE TO BE SPACED 18" ON CENTER THROUGH THE CROSSING
- EACH 3 FT. SECTION CONSISTS OF 1 GAUGE PAD AND 2 FIELD PADS
- RAIL THROUGH CROSSING TO BE NEW 136#, 39 FT. MINIMUM LENGTH
- TIMBER CROSS TIES TO BE NEW 10'-0" WITH 4 ADDITIONAL TIES EACH SIDE OF RUBBER CROSSING
- ALL MATERIALS INCLUDING PLATES, SPIKES AND BOLTS ARE TO BE NEW
- MINIMUM CROSSING LENGTH SHALL BE 20'
- ALL APPROACHES SHALL BE CONSTRUCTED WITH ASPHALT
- MINIMUM ASPHALT APPROACH LENGTH SHALL BE 6' ON BOTH SIDES OF CROSSING. MINIMUM DEPTH OF ASPHALT ON APPROACHES SHALL BE 7"
- CROSSING AT STA. 12+28.00 ON ACCESS ROAD 2 SHALL BE CONSTRUCTED A MINIMUM OF 51' WIDE. THE LAYOUT OF THE CROSSING SHALL BE APPROVED BY TRRA. TRRA'S ENGINEER MAY STAGGER THE CROSSING PANELS TO FIT THE ACCESS ROAD CURVE.
- CROSSING AT STA. 51+86.00 ON ACCESS ROAD 2 SHALL BE CONSTRUCTED 30' WIDE AND CENTERED ON THE PROPOSED ACCESS ROAD
- HIRAIL CORPORATION FULL DEPTH RUBBER SYSTEM IS REQUIRED. SEE THE FULL DEPTH RUBBER SYSTEM CROSSING SPECIAL PROVISION

CROSSING LOCATIONS

ACCESS ROAD 2 STA 12+28.00  
ACCESS ROAD 2 STA 51+86.00



Full Depth Rubber  
System Drawing, Wood Ties  
Drwg: No FB



Full Depth Rubber  
System Drawing, Wood Ties  
Drwg: No FB 2

SHEET 2 OF 3

TYPICAL SECTIONS

FULL DEPTH RUBBER  
CROSSING DETAILS

CONTRACT NO. 76D61

F.A. ROUTE	SECTION
999	82-1B-2
FED. AID PROJECT	ILLINOIS
COUNTY	ST. CLAIR
USER NAME = John Keever	
PLOT SCALE = 10,000' / IN.	
PLOT DATE = 4/14/2010	
DESIGNED - HNTB	
CHECKED - CMT	
DRAWN - CMT / HNTB	
REVISED -	
REVISED -	
REVISED -	
REVISED -	

TYPICAL SECTION  
FULL DEPTH RUBBER  
CROSSING DETAILS  
ILLINOIS APPROACH STRUCTURE  
FOR NEW I-70 MISSISSIPPI RIVER BRIDGE

STATE OF ILLINOIS  
DEPARTMENT OF TRANSPORTATION  
MISSOURI HIGHWAYS  
AND TRANSPORTATION COMMISSION

HNTB  
715 KIRK DRIVE  
KANSAS CITY, MO 64105  
TELEPHONE (816) 472-1201  
CERTIFICATE OF AUTHORITY  
NO. 001270

CMT  
CRANFORD, MURPHY & TILLY, INC.  
2750 WEST WASHINGTON STREET  
SPRINGFIELD, IL 62702  
TELEPHONE (217) 787-8050  
ENGINEERING CORPORATION - 000631

SHEET 6 OF 81