



CURVE DATA
 P.I. STA 81B+21.78
 $\Delta = 133^{\circ}29'$
 $D = 8^{\circ}14'$
 $S.E. = 082'//$
 $S.A. =$

CURVE DATA
 P.I. STA 86B+64.27
 $\Delta = 37^{\circ}03'$
 $D = 8^{\circ}14'$
 $S.E. = 080'//$
 $S.A. =$

STA. 77+34.50
 C.H. 3

CURVE DATA
 P.I. STA 72F+47.82
 $\Delta = 55^{\circ}24'$
 $D = 25^{\circ}00'$
 $S.E. = 0082'//$
 $S.A. =$

CURVE DATA
 P.I. STA 79D+40.69
 $\Delta = 30^{\circ}05'19''$
 $D = 8^{\circ}14'$
 $S.E. = 082'//$
 $S.A. =$

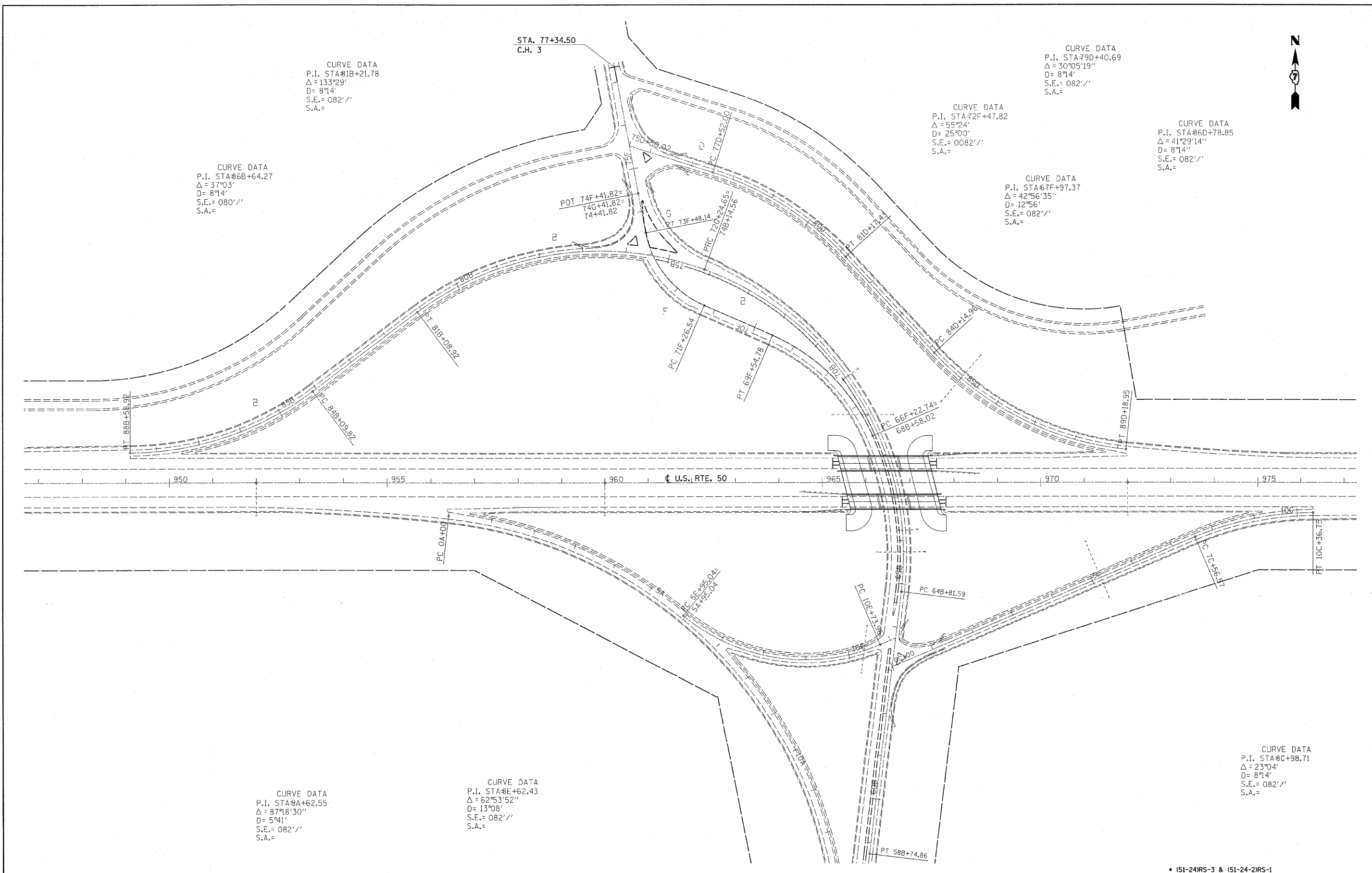
CURVE DATA
 P.I. STA 86D+78.85
 $\Delta = 41^{\circ}29'14''$
 $D = 8^{\circ}14'$
 $S.E. = 082'//$
 $S.A. =$

CURVE DATA
 P.I. STA 67F+97.37
 $\Delta = 42^{\circ}56'35''$
 $D = 12^{\circ}56'$
 $S.E. = 082'//$
 $S.A. =$

CURVE DATA
 P.I. STA 9A+62.55
 $\Delta = 87^{\circ}18'30''$
 $D = 5^{\circ}41'$
 $S.E. = 082'//$
 $S.A. =$

CURVE DATA
 P.I. STA 8E+62.43
 $\Delta = 62^{\circ}53'52''$
 $D = 13^{\circ}08'$
 $S.E. = 082'//$
 $S.A. =$

CURVE DATA
 P.I. STA 8C+98.71
 $\Delta = 23^{\circ}04'$
 $D = 8^{\circ}14'$
 $S.E. = 082'//$
 $S.A. =$



FILE NAME =
 c:\pw\work\FW1001\SWARTZR\00138979\07

USER NAME = swartzr
 4398-shr-plan50.dgn
 PLOT SCALE = 100.0000 / IN.
 PLOT DATE = 1/28/2010

DESIGNED -
 DRAWN -
 CHECKED -
 DATE -

REVISED -
 REVISED -
 REVISED -
 REVISED -

**STATE OF ILLINOIS
 DEPARTMENT OF TRANSPORTATION**

PLAN SHEET

SCALE: 100 SHEET NO. 6 OF 10 SHEETS STA. 947+00 TO STA. 977+00

F.A.P. RTE.	SECTION	COUNTY	TOTAL SHEETS	SHEET NO.
327	*	LAWRENCE	49	27
CONTRACT NO. 74390				
ILLINOIS FED. AID PROJECT				

• (51-24)RS-3 & (51-24-2)RS-1