

STATE OF ILLINOIS
DEPARTMENT OF TRANSPORTATION
DIVISION OF HIGHWAYS

**PROPOSED
HIGHWAY PLANS**

FAP ROUTE 327 (US RTE 50)
SECTION (51-24)RS-3 & (51-24-2)RS-1
PROJECT --
RESURFACING
LAWRENCE COUNTY
C-97-094-09

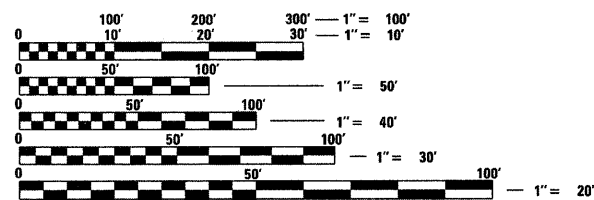
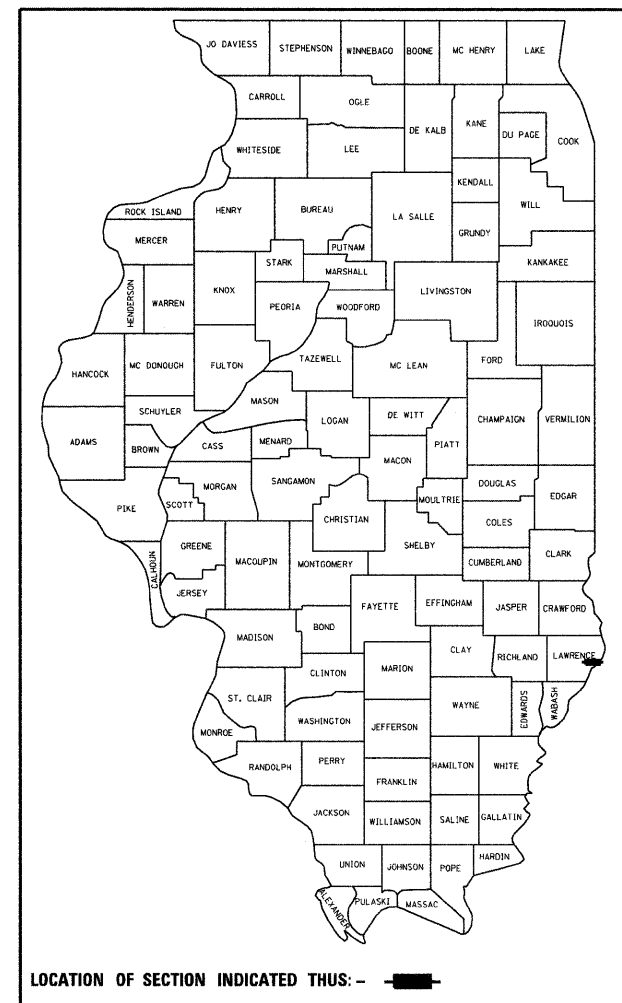
FOR INDEX OF SHEETS, SEE SHEET NO. 2

ADT = 7,000 (2007)

F.A.P. RTE.	SECTION	COUNTY	TOTAL SHEETS	SHEET NO.
327	*	LAWRENCE	49	1
		ILLINOIS	CONTRACT NO. 74390	

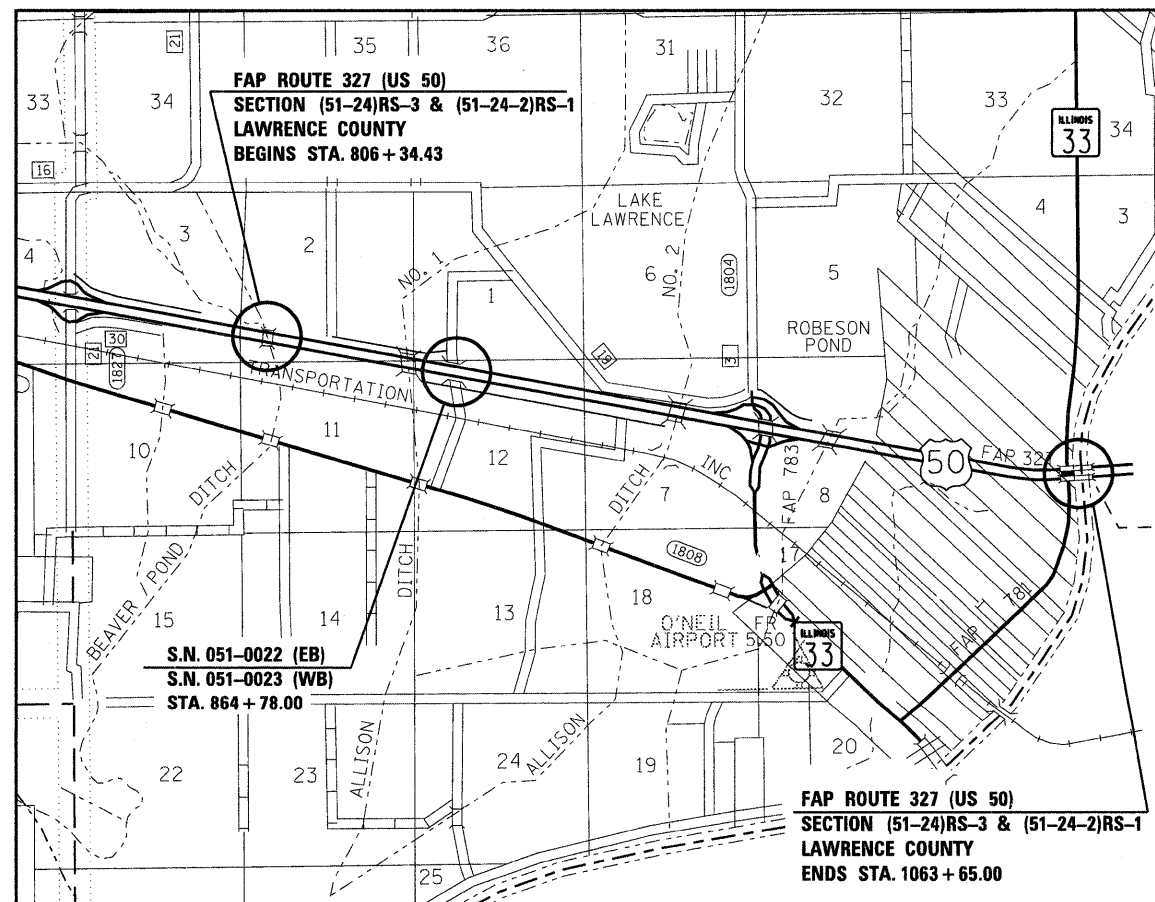
* (51-24)RS-3 & (51-24-2)RS-1

D-97-047-09



FULL SIZE PLANS HAVE BEEN PREPARED USING STANDARD ENGINEERING SCALES. REDUCED SIZED PLANS WILL NOT CONFORM TO STANDARD SCALES. IN MAKING MEASUREMENTS ON REDUCED PLANS, THE ABOVE SCALES MAY BE USED.

J.U.L.I.E.
JOINT UTILITY LOCATION INFORMATION FOR EXCAVATION
1-800-892-0123
OR 811



PROJECT ENGINEER: TOM RONAN
PROJECT DESIGNER: KEVIN BRADY
TOWNSHIP: ALLISON
CONTRACT NO. 74390

GROSS LENGTH = 25,730.57 FT. = 4.873 MILES
NET LENGTH = 24,549.22 FT. = 4.649 MILES

STATE OF ILLINOIS
DEPARTMENT OF TRANSPORTATION
DIVISION OF HIGHWAYS

SUBMITTED January 29, 2010

Roger L. Siskell
DEPUTY DIRECTOR OF HIGHWAYS, REGION ENGINEER

April 9, 2010
Scott E. Stitt, P.E.
Acting ENGINEER OF DESIGN AND ENVIRONMENT

April 9, 2010
Christine M. Reed
DIRECTOR OF HIGHWAYS, CHIEF ENGINEER

**PRINTED BY THE AUTHORITY
OF THE STATE OF ILLINOIS**