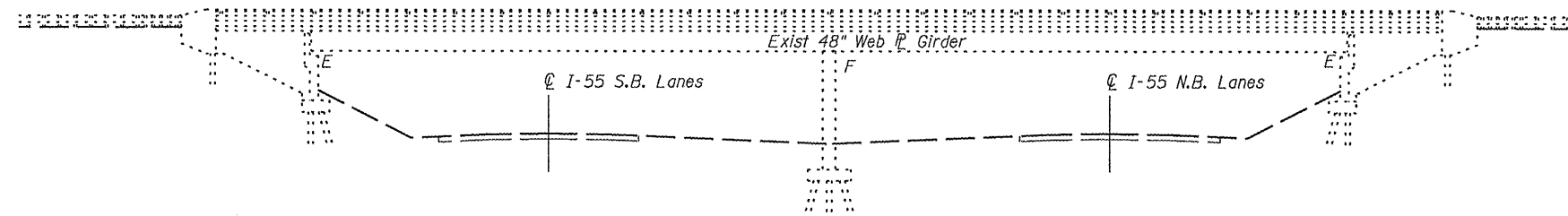


Existing Structure: S.N. 059-0042 Built as F.A.I. Rte. 55 - Sec 59-IHB-2 in 1973. The super structure is a R.C. Slab, two-span, steel continuous structure with vaulted sand filled approach spans. The structure length is 249'-8" back-to-back of approach bents and the width is 32' out-to-out. The two steel span lengths are both 102'-10" and the concrete approach slabs are both 21'-6".

Traffic Control & Protection Standard 701201 will be used to replace the expansion joint seal.

No Salvage.

STATE OF ILLINOIS
DEPARTMENT OF TRANSPORTATION



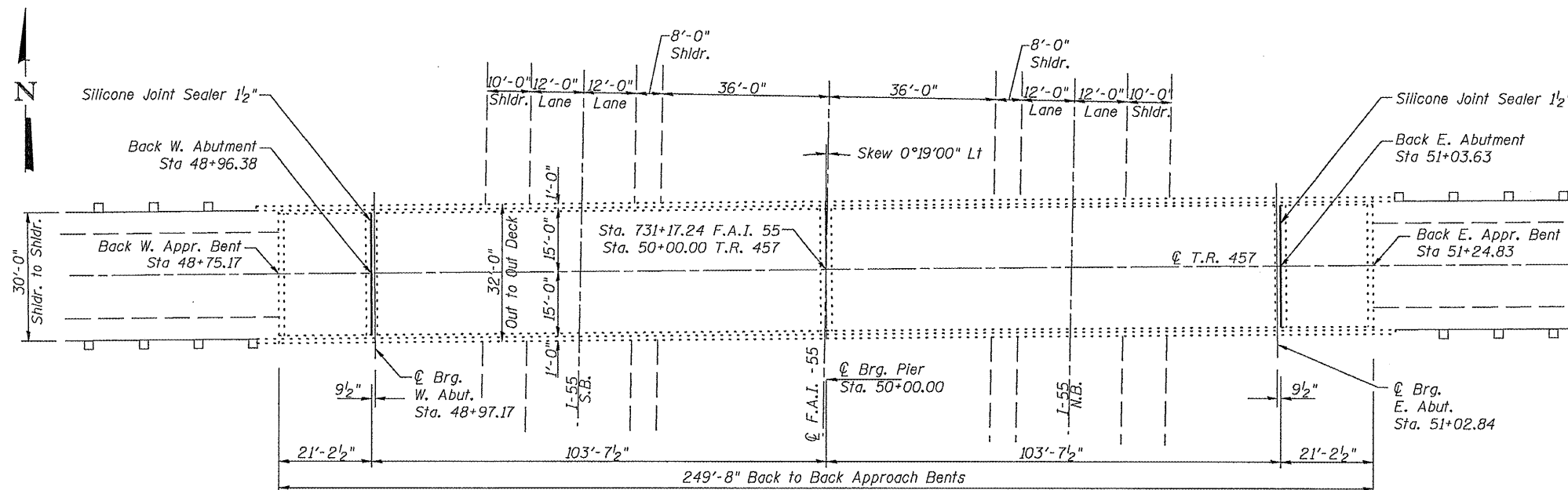
ELEVATION

GENERAL NOTES

1. Plan dimensions and details relative to existing plans are subject to nominal construction variations. The Contractor shall field verify existing dimensions and details affecting new construction and make necessary approved adjustments prior to construction or ordering of materials. Such variations shall not be cause for additional compensation for a change in scope of the work, however, the Contractor will be paid for the quantity actually furnished at the unit price bid for the work.

INDEX OF SHEETS

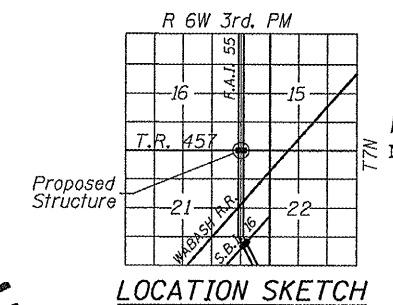
- 1 General Plan
- 2 Expansion Joint Details



PLAN

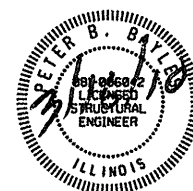
TOTAL BILL OF MATERIAL

Item	Unit	Quantity
Silicone Joint Sealer, 1 1/2"	Foot	60



LOCATION SKETCH

GENERAL PLAN
T.R. 457 OVER I-55
F.A.I. RTE. 55
SECTION 59RS-2, BR
MACOUPIN COUNTY
STATION 731+17.24
STRUCTURE NO. 059-0042



Peter B. Boyles
Peter B. Boyles, P.E., S.E.
Structural Engineer License No. 081-006042
Expiration Date: 11/30/2010

SHEET NO. 1	F.A.I. RTE.	SECTION	COUNTY	TOTAL SHEETS	SHEET NO.
2 SHEETS	55	59RS-2, BR	Macoupin	100	79
			CONTRACT NO. 72A60		
FED. ROAD DIST. NO.		ILLINOIS FED. AID PROJECT			