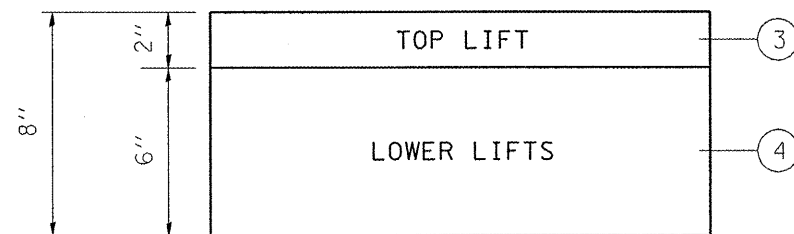


The following mixture requirements are applicable for this project:

Mixture Number	1	2	3	4
Mixture Use(s)	Interstate & Ramps Polymer HMA Binder	Interstate & Ramps Polymer HMA Surface	Staunton Mainline, Bridge decks; Interstate Shoulders; HMA Shoulders; 8" Shoulders (top lift 2" min.); & Incidental HMA Surfacing	HMA Shoulders 8" (Lower Lifts), HMA Base Course, Patching
AC/PG:	SBS PG70-22	SBS PG76-22	PG 64-22	PG 64-22
Design Air Voids:	4.0% @ N105	4.0% @ N105	4.0% @ N50	4.0% @ N50
Mixture Composition: (Gradation Mixture)	IL 19.0	IL 9.5 or 12.5	IL 9.5 or 12.5 Mix C	IL 19.0
Friction Aggregate:	N/A	Mix E		N/A

ASPHALT PAVING LIFT DIAGRAM



HOT-MIX ASPHALT SHOULDERS, 8"

FILE NAME : c:\pwwork\PMIDOT\COXTE\dms25312\0672A00-gennotes.dgn	USER NAME = coxte	DESIGNED -	REVISED -	STATE OF ILLINOIS DEPARTMENT OF TRANSPORTATION	MIXTURE REQUIREMENTS				F.A.I. RTE.	SECTION	COUNTY	TOTAL SHEETS	SHEET NO.		
		DRAWN -	REVISED -		SCALE:	SHEET NO.	OF	SHEETS	STA.	TO STA.	55	59RS-2, BR	MACOUPIN	100	3
		CHECKED -	REVISED -												
		DATE -	REVISED -												
	PLOT SCALE = 100.0000 1/ IN.														
	PLOT DATE = Mar-23-2010 03:03:26PM														
											CONTRACT NO. 72A60				
											ILLINOIS FED. AID PROJECT				