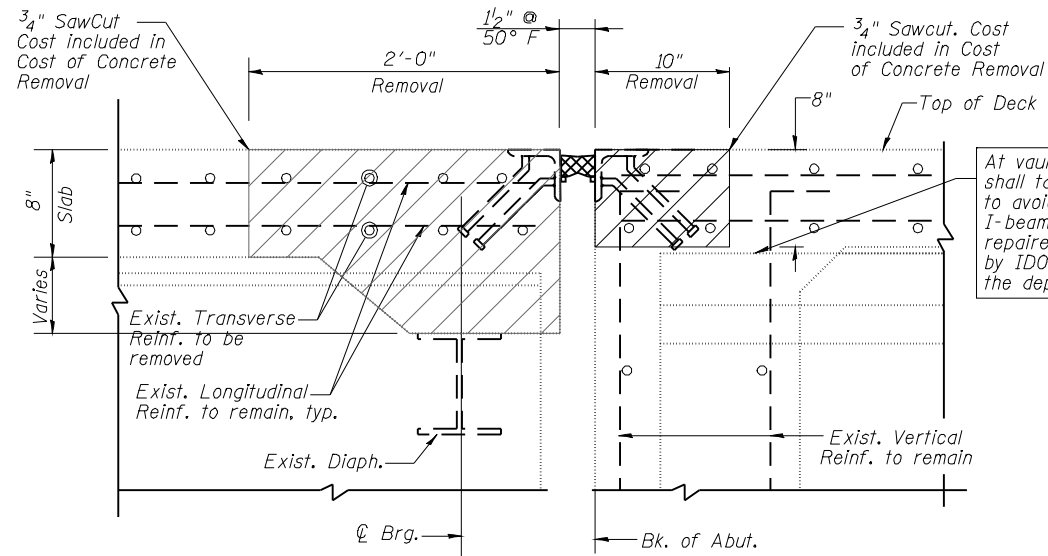
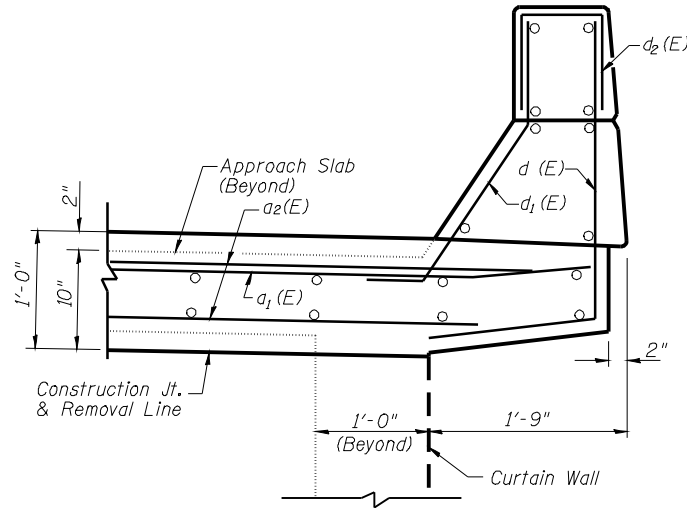
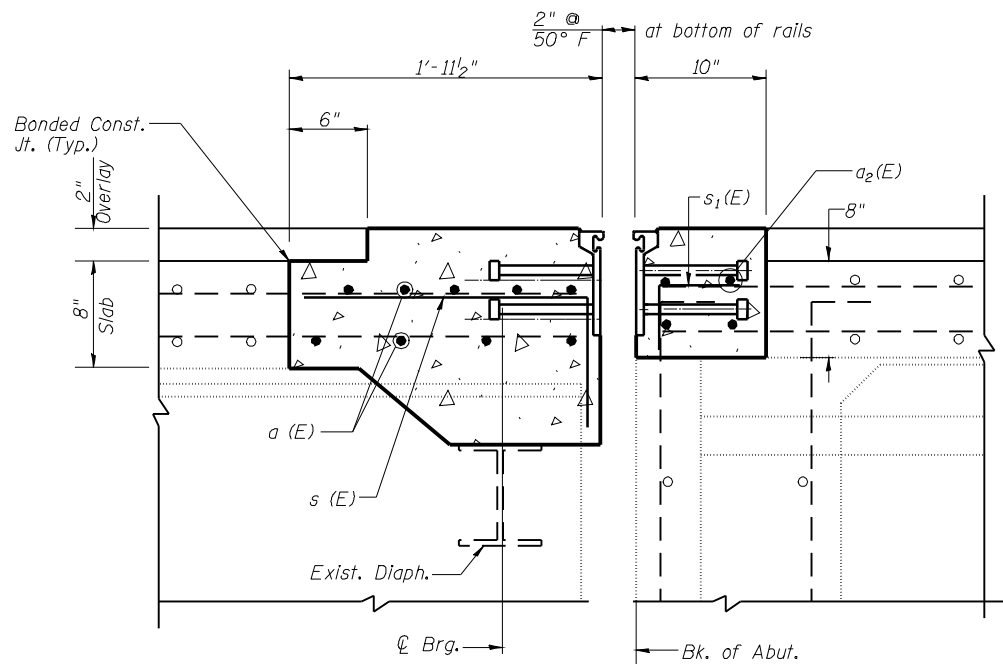
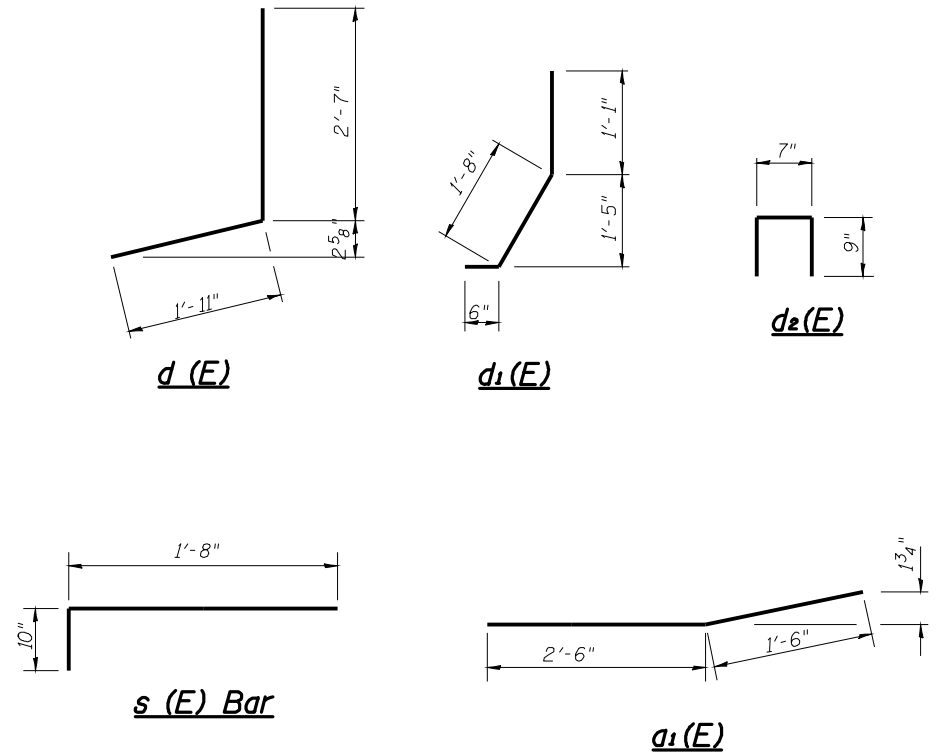
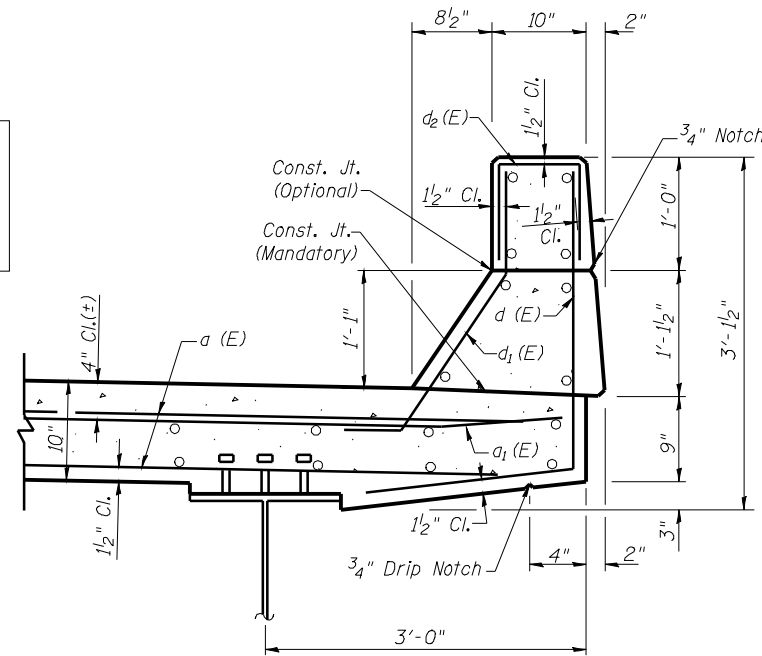


STATE OF ILLINOIS
DEPARTMENT OF TRANSPORTATION



At vaulted abutments Contractor shall take necessary precautions to avoid damaging the P.P.C. I-beams. Any damage shall be repaired as approved and directed by IDOT at no additional cost to the department.



NOTES:

- Any reinforcement bars that are damaged during concrete removal operations shall be repaired or replaced using an approved bar splicer or anchorage system. Cost included with the cost of Concrete Removal.
- Joint openings shall be adjusted according to Article 520.04 of the Standard Specifications when ambient temperature is other than 50° F.
- Removal of all existing expansion joints shall be included in the cost of Concrete Removal.

BILL OF MATERIAL
(E. & W. Abut.)

Bar	No.	Size	Length	Shape
a(E)	40	#5	22'-3"	—
a ₁ (E)	20	#6	4'-0"	—
a ₂ (E)	16	#6	22'-3"	—
d(E)	20	#4	4'-6"	J
d ₁ (E)	20	#5	3'-3"	J
d ₂ (E)	20	#4	2'-1"	□
s(E)	88	#5	2'-6"	—
s ₁ (E)	88	#5	1'-1"	—
Concrete Removal			Cu. Yd.	9.5
Concrete Superstructure			Cu. Yd.	10.8
Reinforcement Bars, Epoxy Coated			Pound	2070
Bar Splicers			Each	28
Protective Coat			Sq. Yd.	31

DECK JOINT REPAIR DETAILS
STRUCTURE NO. 059-0044

SHEET NO. 4 10 SHEETS	F.A.I. RTE.	SECTION	COUNTY	TOTAL SHEETS	SHEET NO.
	55	59RS-2, BR	Macoupin	100	84
FED. ROAD DIST. NO.			ILLINOIS FED. AID PROJECT	CONTRACT NO. 72A60	