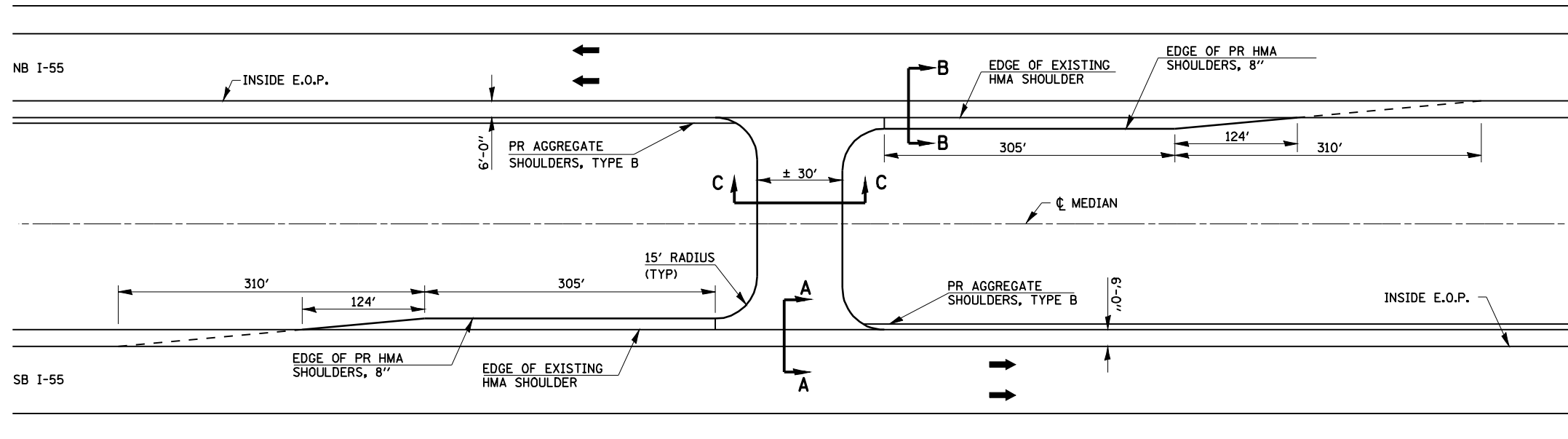
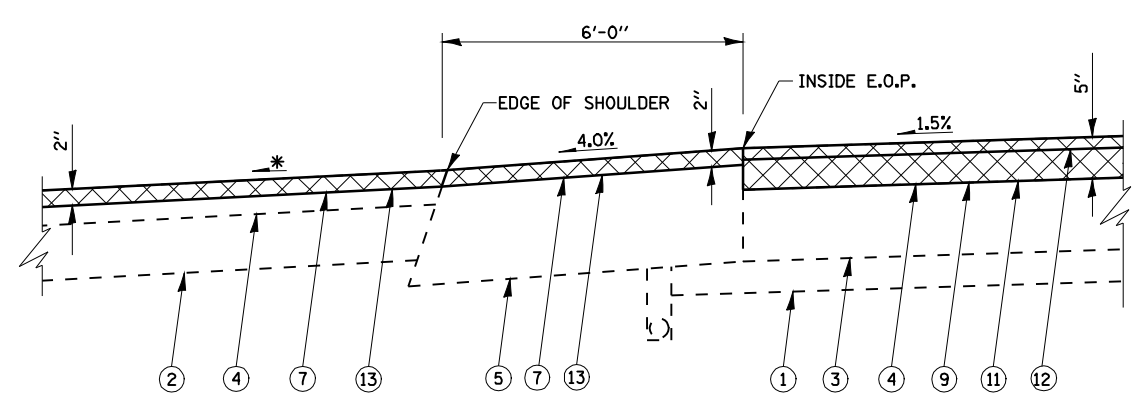


EMERGENCY MEDIAN CROSSOVERS

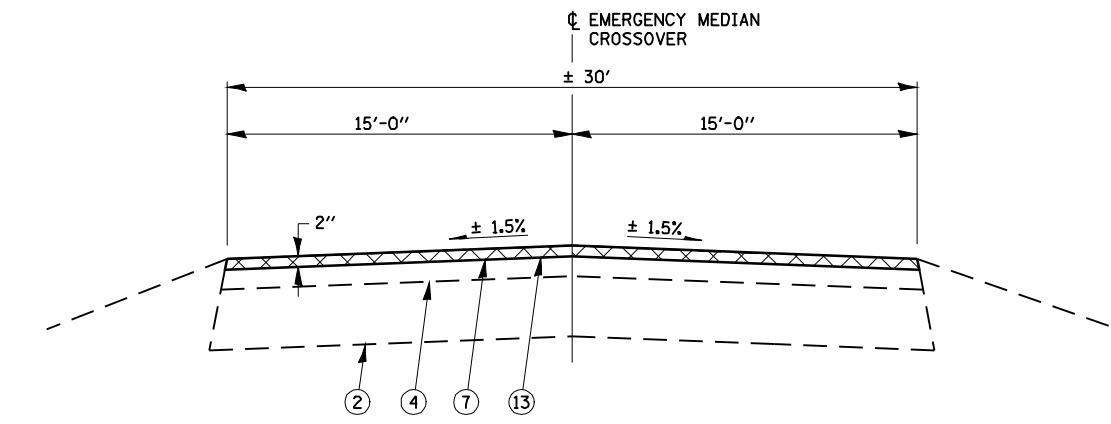


NOTE:
TWO DELINEATORS SHALL BE PLACED IN ADVANCE OF THE MEDIAN CROSSOVERS. ONE SHALL BE AT THE CROSSOVER, THE OTHER 800 FT IN ADVANCE OF THE FIRST. THE DELINEATOR AT THE CROSSOVER SHALL HAVE TWO REFLECTORS, AND THE DELINEATOR 800 FT IN ADVANCE SHALL HAVE THREE REFLECTORS

PLAN VIEW

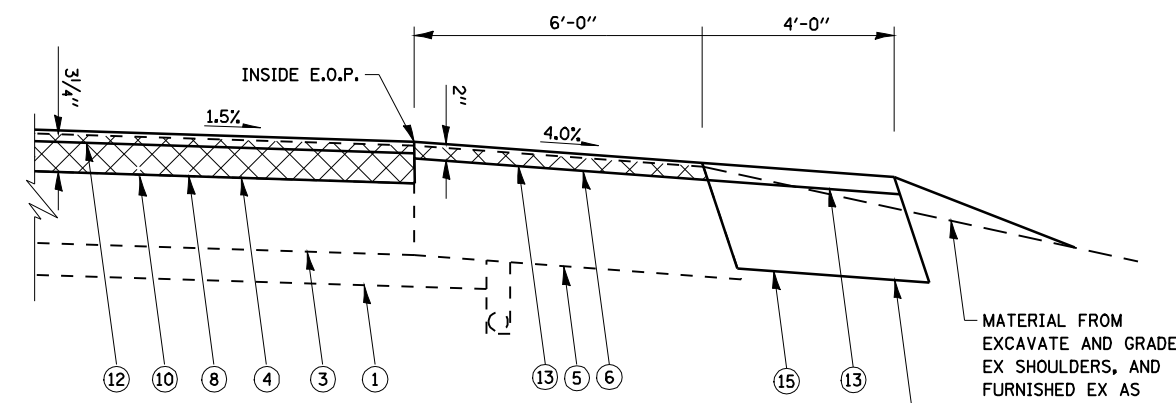


SECTION A - A



SECTION C - C

LEGEND	
①	EX AGGREGATE SUB-BASE, 4"
②	EX AGGREGATE BASE COURSE
③	EX P.C.C. PAVEMENT
④	EX HOT-MIX ASPHALT OVERLAY
⑤	EX HOT-MIX ASPHALT SHOULDER
⑥	PR HOT-MIX ASPHALT SURFACE REMOVAL 1/2"
⑦	PR HOT-MIX ASPHALT SURFACE REMOVAL 2"
⑧	PR HOT-MIX ASPHALT SURFACE REMOVAL 3/4"
⑨	PR HOT-MIX ASPHALT SURFACE REMOVAL 5"
⑩	PR POLYMERIZED HOT-MIX ASPHALT BINDER COURSE, 2 1/4"
⑪	PR POLYMERIZED HOT-MIX ASPHALT BINDER COURSE 3 1/2"
⑫	PR POLYMERIZED HOT-MIX ASPHALT SURFACE COURSE, 1 1/2"
⑬	PR HOT-MIX ASPHALT SURFACE COURSE, MIX "C", N50 2"
⑭	PR AGGREGATE SHOULDERS, TYPE B
⑮	PR HOT-MIX ASPHALT SHOULDERS, 8"



SECTION B - B

EMERGENCY CROSSOVER IMPROVEMENT

LOCATION	HMA SURF	EXCAV & GR	HMA	HMA SURF CSE
	REM 2"	EX SHLDS	SHOULDERS 8"	MIX C N50
	SQ YD	UNIT	SQ YD	TON
I-55 STA 705+75	274.79	8.6	381.34	30.78
I-55 STA 245+30	274.79	8.6	381.34	30.78
TOTAL	549.38	17.2	762.68	61.56

* - MAINTAIN SLOPES AWAY FROM MAINLINE PAVEMENT TO ENSURE PROPER DRAINAGE INTO MEDIAN DITCHES.