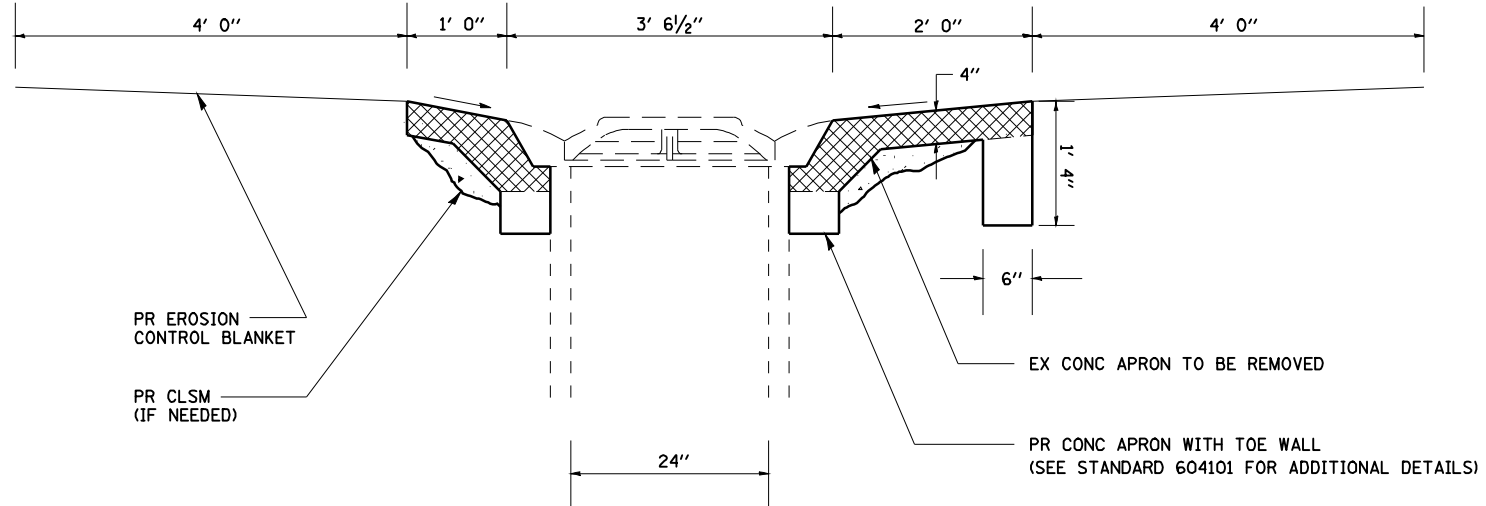
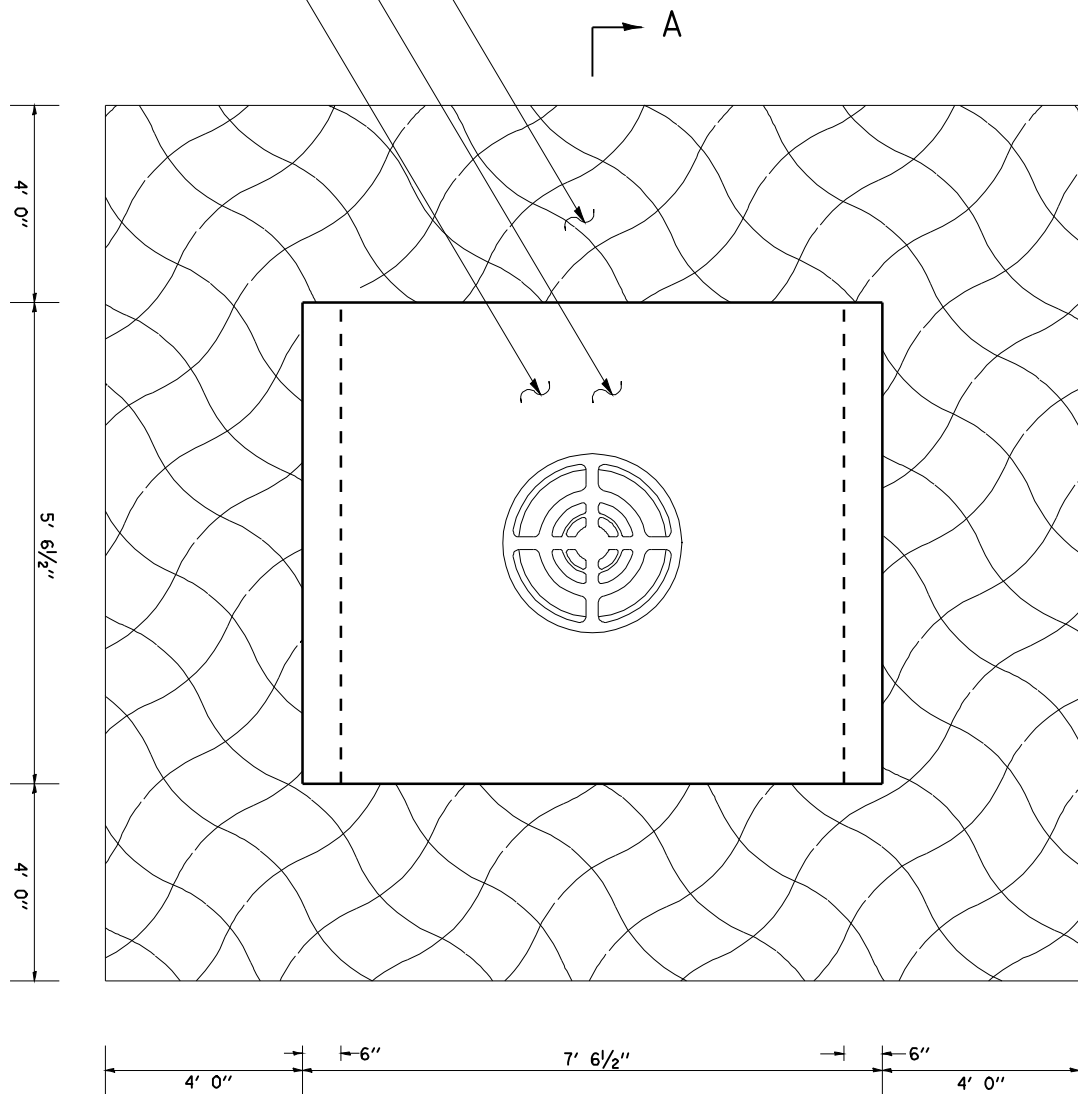


PR EROSION CONTROL BLANKET  
 PR CONC APRON  
 EX CONC APRON



**SECTION A-A**

**REPAIRS TO INLET STANDARD 2250**

| LOCATION       | MED INLET (604101)<br>TO BE RECONSTRUCTED<br>(EACH) | EROSION<br>CONTROL BLANKET<br>(SQ YD) | CONTROLLED LOW<br>STRENGTH MATERIAL<br>(CU YD) |
|----------------|---|---------------------------------------|--|
| MED STA 205+78 | 2   | 37.3                                  | 3.0  |
| NB STA 205+78  | 1   | 18.7                                  | 1.5  |
| SB STA 205+78  | 1   | 18.7                                  | 1.5  |
| <b>TOTAL</b>   | <b>4</b>  | <b>74.7</b>                           | <b>6.0</b>                                     |

**NOTES:**

- SEE SEEDING SCHEDULE FOR SEEDING QUANTITIES.
- SEE STANDARD 604101 FOR ADDITIONAL DETAILS NOT SHOWN. THE TOE WALL AT THE LONG END OF THE APRON IS IN ADDITION TO WHAT IS SHOWN IN STANDARD 604101.
- CONTROLLED LOW STRENGTH MATERIAL TO BE USED IF DEEMED NECESSARY BY THE ENGINEER, THE QUANTITY IN THE ABOVE SCHEDULE IS ESTIMATED.