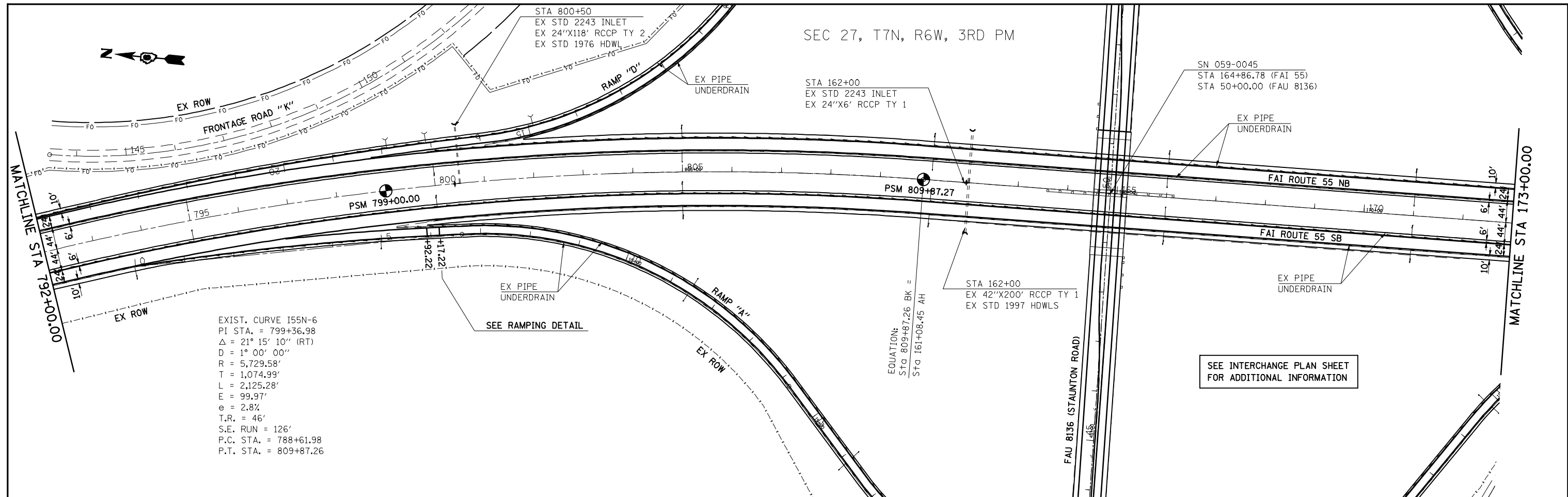
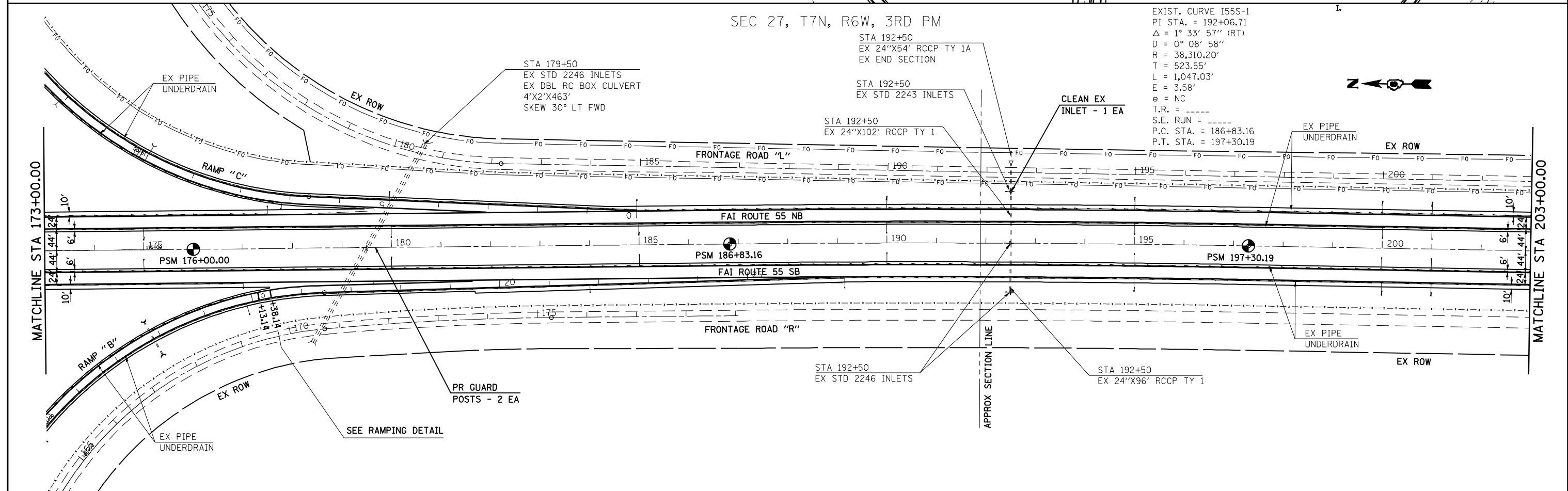


SEC 27, T7N, R6W, 3RD PM



SEC 27, T7N, R6W, 3RD PM



FILE NAME =	USER NAME = laughlinr1	DESIGNED -	REVISED -
es:\pwork\PWID00\LAUGHLINRL\dms25312\0672460-ah-1\plan100.dgn		DRAWN -	REVISED -
		CHECKED -	REVISED -
		DATE -	REVISED -
	PLOT DATE = Mar-26-2010 11:10:34AM		

STATE OF ILLINOIS
 DEPARTMENT OF TRANSPORTATION

PLAN SHEETS			
SCALE: 1" = 100'	SHEET NO.	OF SHEETS	STA. 792+00.00 TO STA. 203+00.00

F.A. RTE.	SECTION	COUNTY	TOTAL SHEETS	SHEET NO.
55	59RS-2, BR	MACOUPIN	100	29
CONTRACT NO. 72A60				
ILLINOIS FED. AID PROJECT				