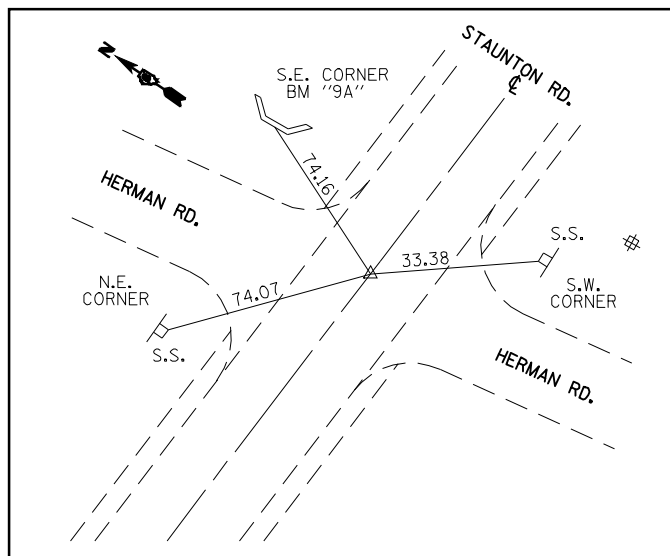
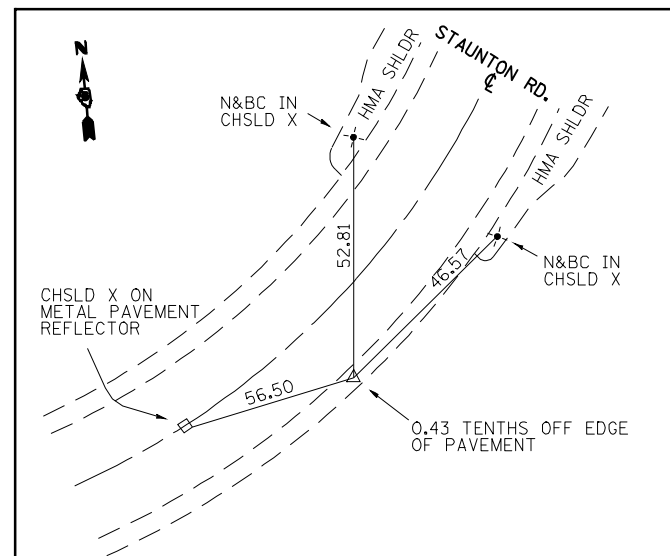


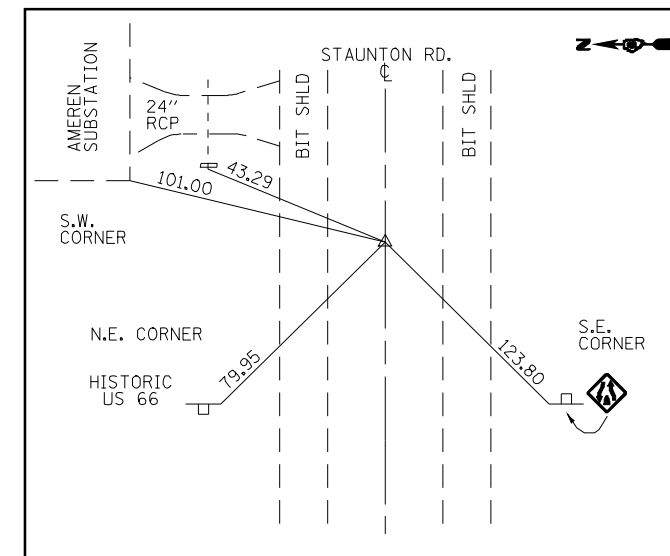
STA EQ 122+25 A109 BK = 21+09.83 A111 AH  
( PK NAIL IN CHSLD "X" )



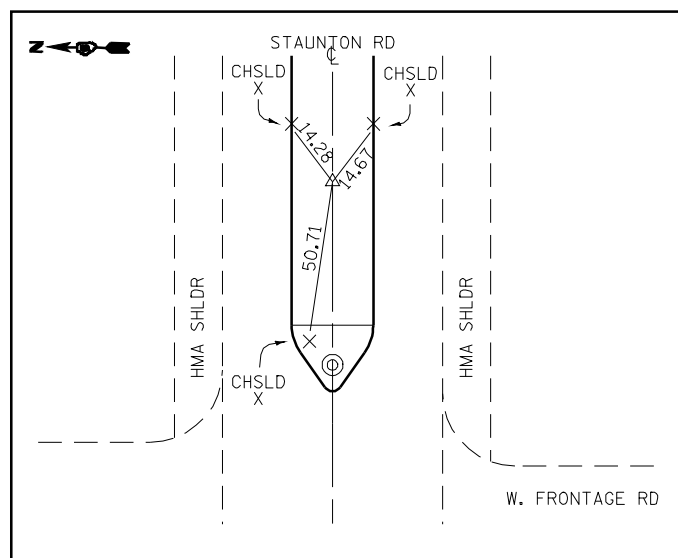
PC STA. 22+12.791  
( PK NAIL IN CHSLD "X" )



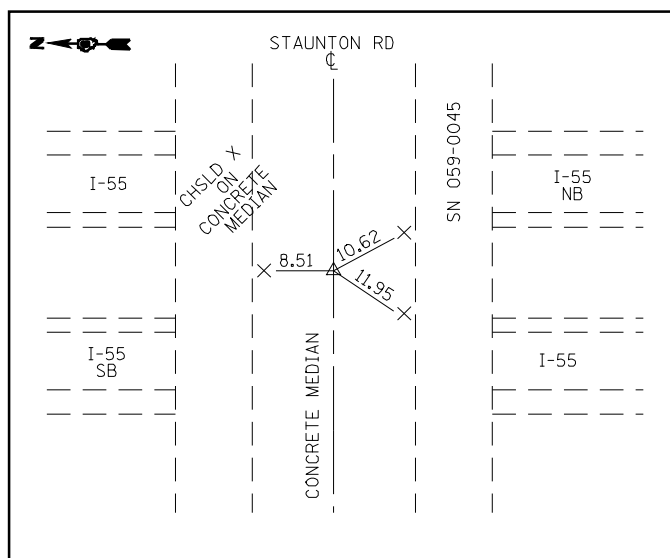
PI STA. 24+15.088  
( PK NAIL IN CHSLD "X" )



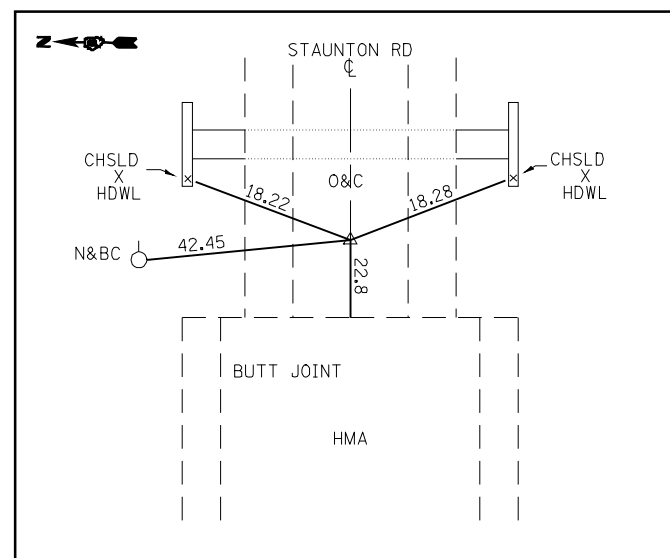
PT STA. 26+15.683  
( PK NAIL IN CHSLD "X" )



POT STA. 36+07.43  
( 60 D NAIL FLUSH )



50+00 = 164+89.336  
( STAR DRILL )



POT 76+70.034  
( REBAR BURIED 10" )  
( 60D SURFACE MARK )

- BM \*10 : SET CHSLD "□" ON S CURB OF CONC MEDIAN @ ROUND INLET OPPOSITE GATEWAY CYLINDER  
TECH ± 400 W OF W FRONTAGE RD  
STA. 30+97.6; 2.6 LT  
NAVD '88 = 640.241
- BM \*11 : SET CHSLD "□" ON S CURB OF CONC MEDIAN 22 FT W OF END MEDIAN @ SBL I-55 ON & OFF RAMP  
STA. 41+77.6; 7.6 RT  
NAVD '88 = 651.834
- BM \*11A : SET CHSLD "□" TOP CONC H.R. @ NW BRIDGE OVER I-55  
SN 059-0045  
STA. 48+76.1; 34.6 LT  
NAVD '88 = 665.100
- BM \*12 : RR SPIKE @ CONC MEDIAN @ EAST BRIDGE DECK, 1.3 W OF CONC / GRASS LINE (ALSO SEE X-TIE FOR #6004)  
STA. 51+23.5; 1.1 LT  
NAVD '88 = 662.681
- BM \*12A : SET CHSLD "□" ON N SIDE L.P. FOUNDATION SE QUAD NBL ON & OFF RAMP  
STA. 57+49.3; 49.2 RT  
NAVD '88 = 651.110
- BM \*13 : SET CHSLD "□" ON S CURB OF CONC MEDIAN, UNDER POWERLINE ± 370 FT E OF I-55 NBL EXIT RAMP  
STA. 61+63.7; 6.41 RT  
NAVD '88 = 645.347

FILE NAME =	USER NAME = coxte	DESIGNED -	REVISED -
e:\pwork\pwork\pwork\COXTE\dms25312\0672402-shr-ATB.dgn		DRAWN -	REVISED -
PLOT SCALE = 40.0000' / IN.		CHECKED -	REVISED -
PLOT DATE = Mar-23-2010 03:21:44PM		DATE -	REVISED -

**STATE OF ILLINOIS  
DEPARTMENT OF TRANSPORTATION**

<b>CROSS TIES AND BENCHMARKS</b>			
SCALE:	SHEET NO.	OF SHEETS	STA. TO STA.

F.A.I. RTE.	SECTION	COUNTY	TOTAL SHEETS	SHEET NO.
55	59RS-2, BR	MACOUPIN	100	26
				CONTRACT NO. 72A60
ILLINOIS FED. AID PROJECT				