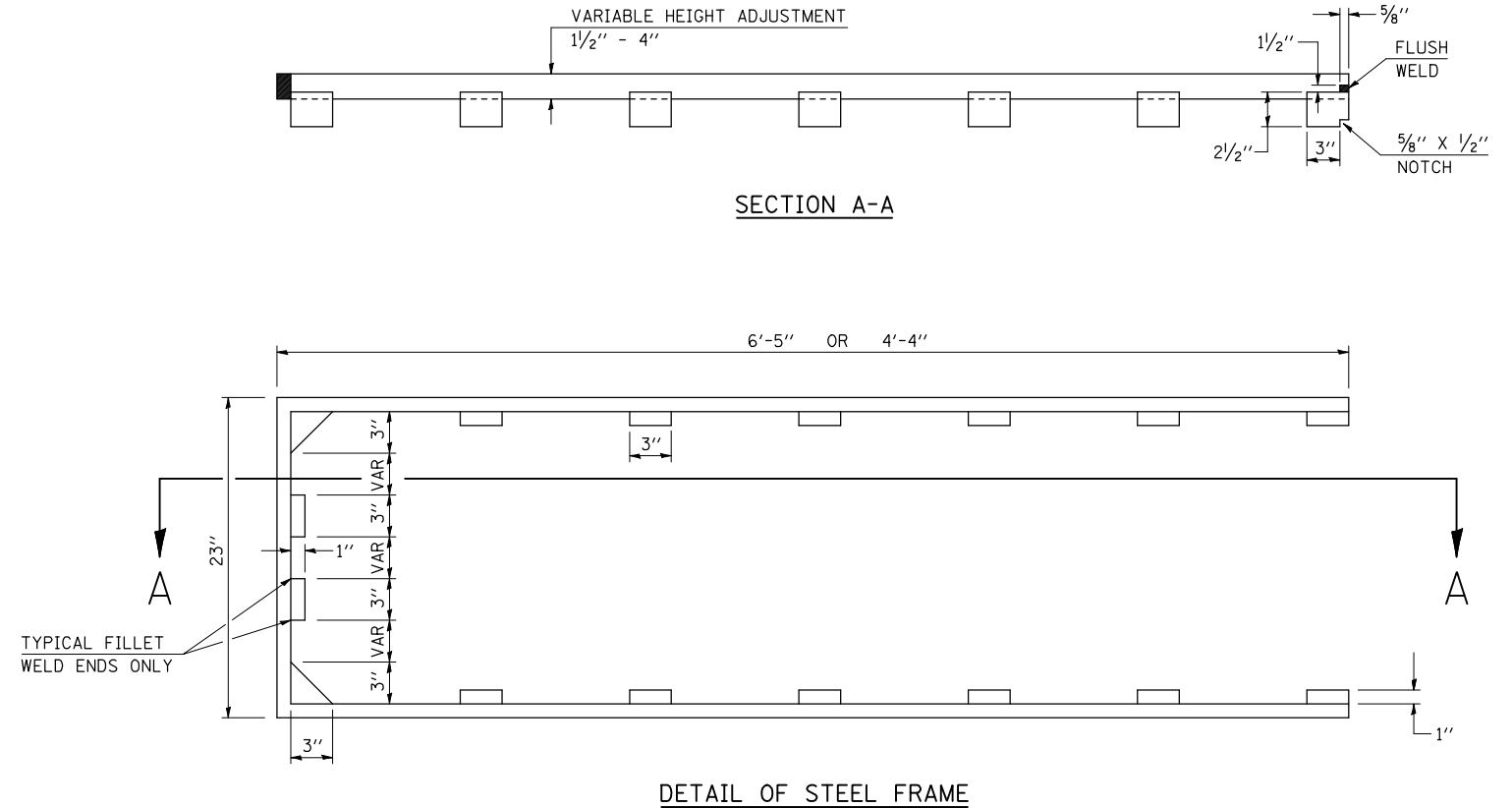
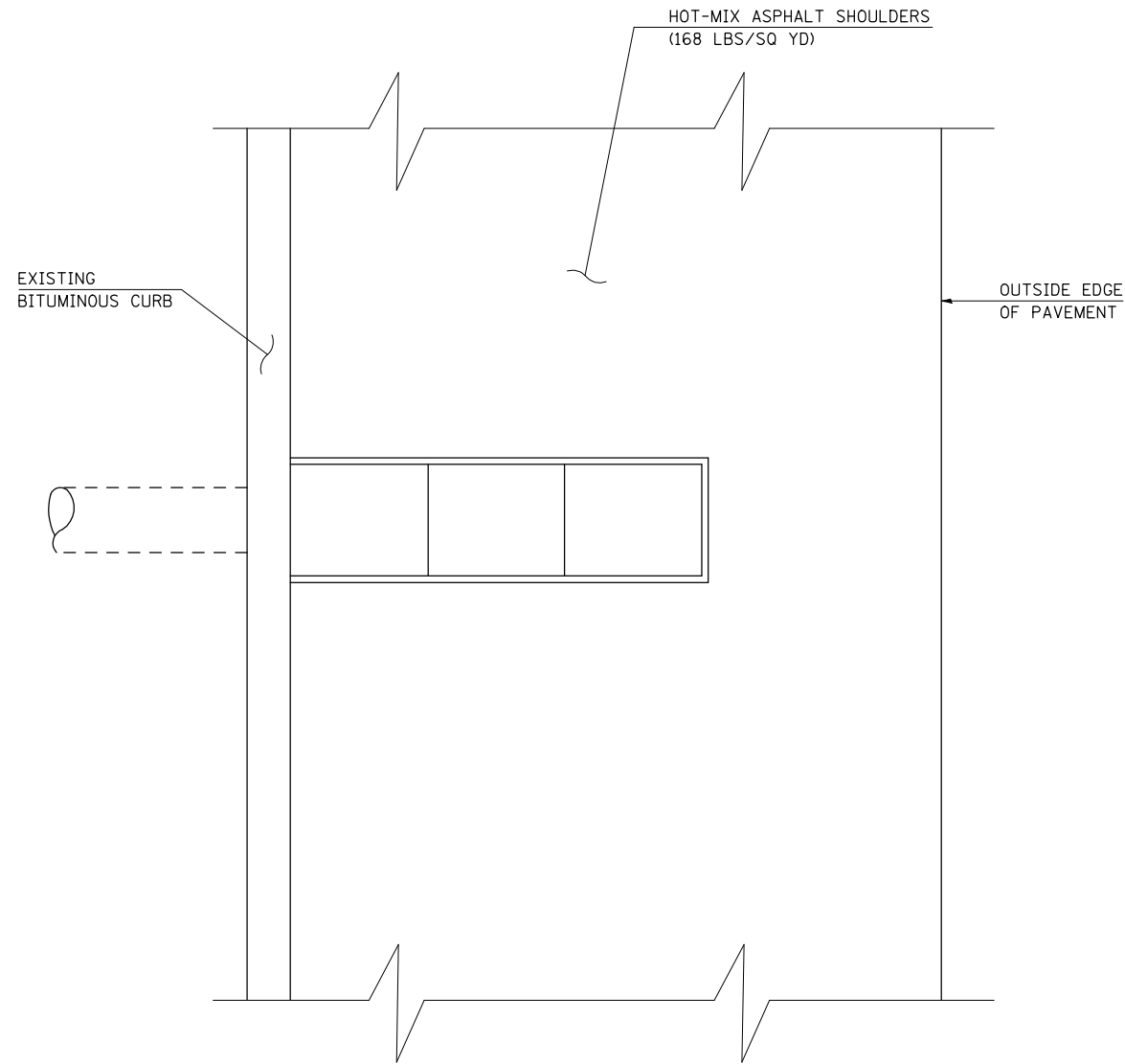


F.A.I. RTE.	SECTION	COUNTY	TOTAL SHEETS	SHEET NO.
72	*	PIATT	251	216

*(58,74-66)&(74-67&68)RS-1

DETAIL FOR INLET ADJUST (SPECIAL)

LOCATIONS TO BE DETERMINED BY ENGINEER DURING CONSTRUCTION



GENERAL NOTES

- HEIGHT ADJUSTMENTS ARE TO BE MEASURED IN THE FIELD.
- FABRICATION WELDS ARE TO BE PLACED SO AS NOT TO INTERFERE WITH RING SEATING ON FRAME OR GRATE.
- MILD STEEL MAY BE USED TO FABRICATE ADJUSTMENT RING.
- THIS WORK SHALL BE PERFORMED BEFORE THE HMA SHOULDERS ARE PLACED TO INSURE PROPER ADJUSTMENT.
- THIS WORK SHALL BE MEASURED FOR PAYMENT PER EACH INDIVIDUAL ADJUSTMENT AND PAID FOR AT THE CONTRACT UNIT PRICE EACH FOR INLET ADJUST (SPECIAL), WHICH PRICE SHALL INCLUDE ALL EQUIPMENT, MATERIAL, LABOR AND OTHER ITEMS REQUIRED TO MANUFACTURE & INSTALL EACH INDIVIDUAL ADJUSTMENT RING.

60260200 INLET ADJUST (SPECIAL)

LOCATION	EACH
EB I-72	4.0
WB I-72	4.0
TOTAL =	8.0

NOT TO SCALE

ILLINOIS DEPARTMENT OF TRANSPORTATION
DETAIL FOR
INLET ADJUST (SPECIAL)

F.A.I. ROUTE 72
 SECTION (58,74-66)&(74-67&68)RS-1
 PIATT COUNTY

SCALE: NONE
 DATE: 03-31-09

DRAWN BY: CADD
 CHECKED BY:

PLOT DATE: 2/8/2010
 FILE NAME: c:\p\...
 PLOT SCALE: 1/8"=1'-0"
 USER NAME: pierse