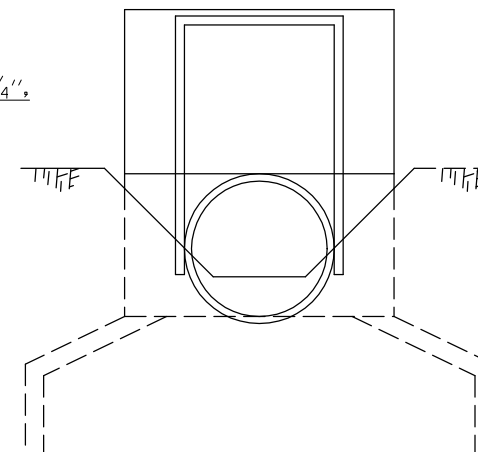
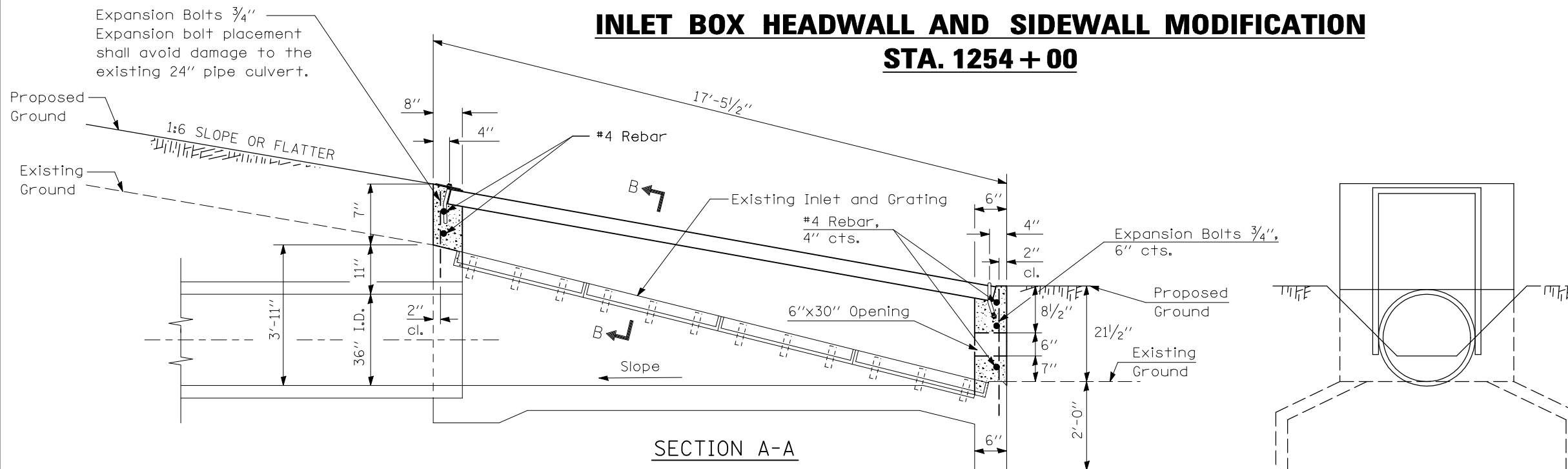


F.A.I. RTE.	SECTION	COUNTY	TOTAL SHEETS	SHEET NO.
72	*	PIATT	251	212

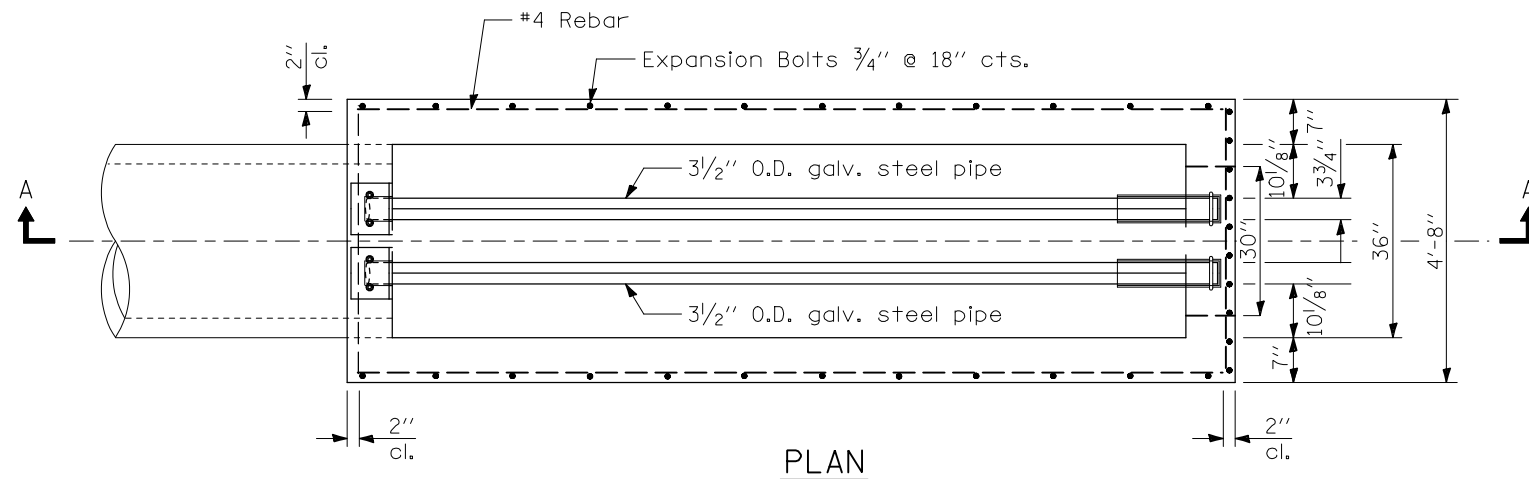
\*(58,74-66)&(74-67&68)RS-1

# INLET BOX HEADWALL AND SIDEWALL MODIFICATION STA. 1254 + 00

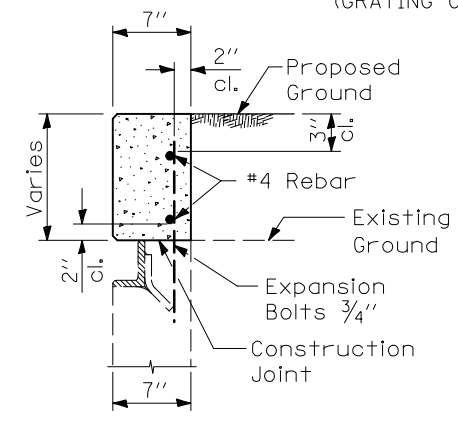
Bill of Materials		
LOCATION LT. 194+85		
54002020 3/4" Bolts	each	40
54248500 Concrete Headwalls	cu. yd.	1.2
50800105 Rebar size #4	pound	30.0



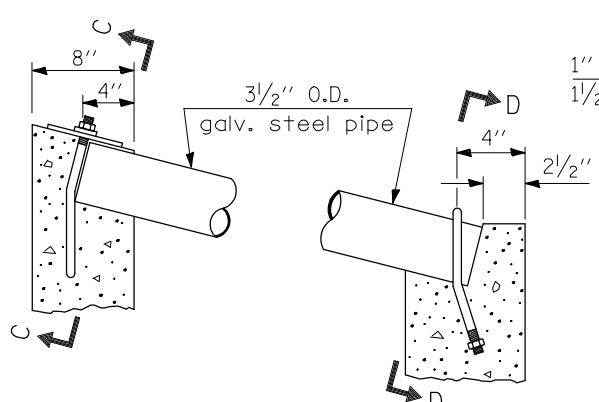
END VIEW  
(GRATING OMITTED FOR CLARITY)



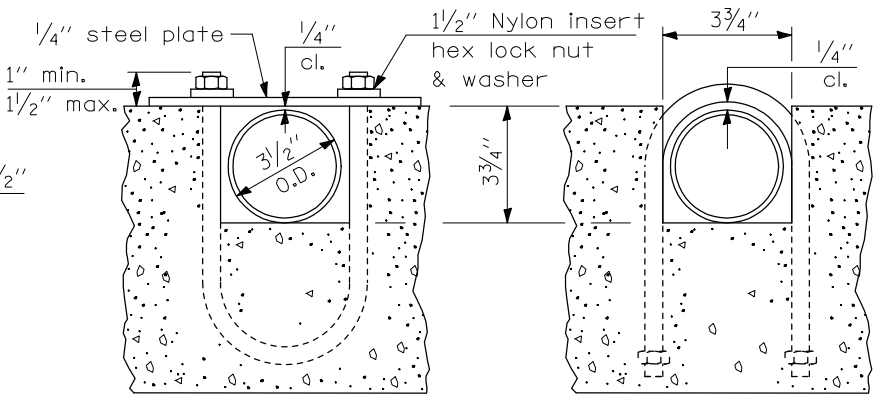
PLAN



SECTION B-B

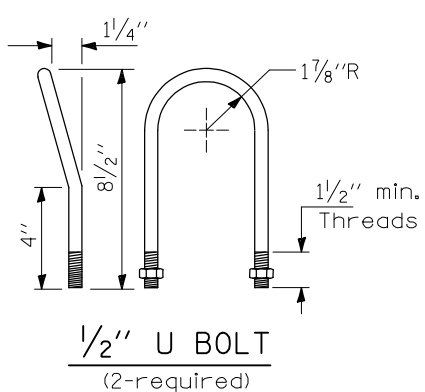


DETAIL AT BLOCKOUTS

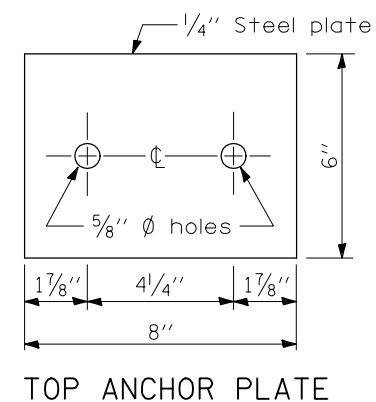


SECTION C-C

SECTION D-D



1/2" U BOLT  
(2-required)



TOP ANCHOR PLATE  
(1-required)

### NOTES

- All edges shall have standard 3/4" chamfers.
- CLASS SI CONCRETE shall be used throughout.
- Expansion bolts shall extend a minimum 6" into new concrete.
- The contractor will be responsible for checking steel pipe length and field dimensions prior to ordering to insure proper installation of grating.
- Existing angle frame and main bearing bars shall remain in place. Existing steel grating shall be removed and delivered to Monticello maintenance storage yard at no additional cost to the state.
- The inlet shall be backfilled in accordance with the Standard Specifications.
- All work and materials shall be in accordance with applicable portions of Section 542. The galvanized steel pipe, steel top anchor plate, U bolts, nylon insert hex lock nuts and washers and all work associated with these items will not be measured for payment and shall be included in the contract unit price per cubic yard for CONCRETE HEADWALLS.

ILLINOIS DEPARTMENT OF TRANSPORTATION  
**INLET BOX HEADWALL AND  
SIDEWALL MODIFICATION**  
**STA. 1254 + 00**

SCALE: NOT TO SCALE  
DATE: 02/03/10

DRAWN BY: CADD  
CHECKED BY:

PLOT DATE = 2/8/2010  
 FILE NAME = c:\p\cadd\p\1007\BUCKLES\11\1010978\289946.dwg  
 PLOT SCALE = 1/8"=1'-0"  
 USER NAME = bucklesj