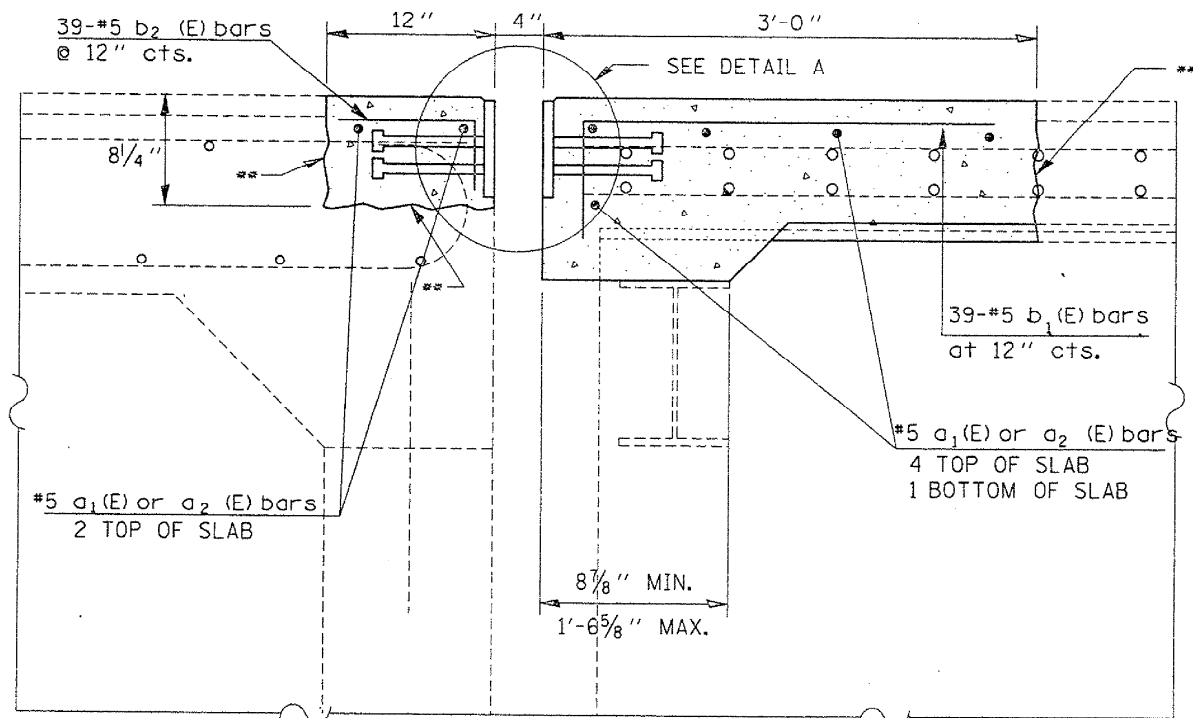


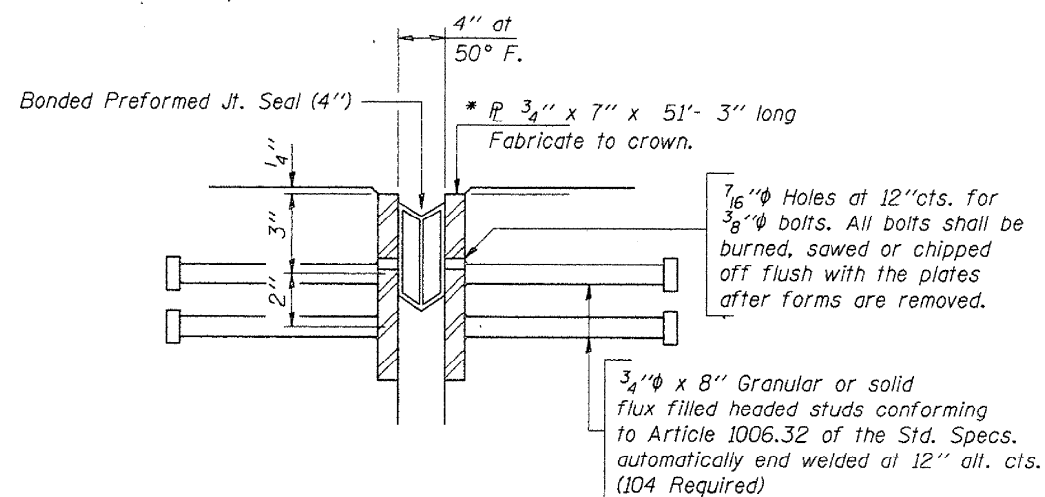
# AS-BUILT PLANS – S.N. 074-0067 FOR INFORMATION ONLY

| F.A.I. RTE. | SECTION    | COUNTY | TOTAL SHEETS | SHEET NO. |
|-------------|------------|--------|--------------|-----------|
| 72          | (74-688-1) | PIATT  | 20           | 12        |



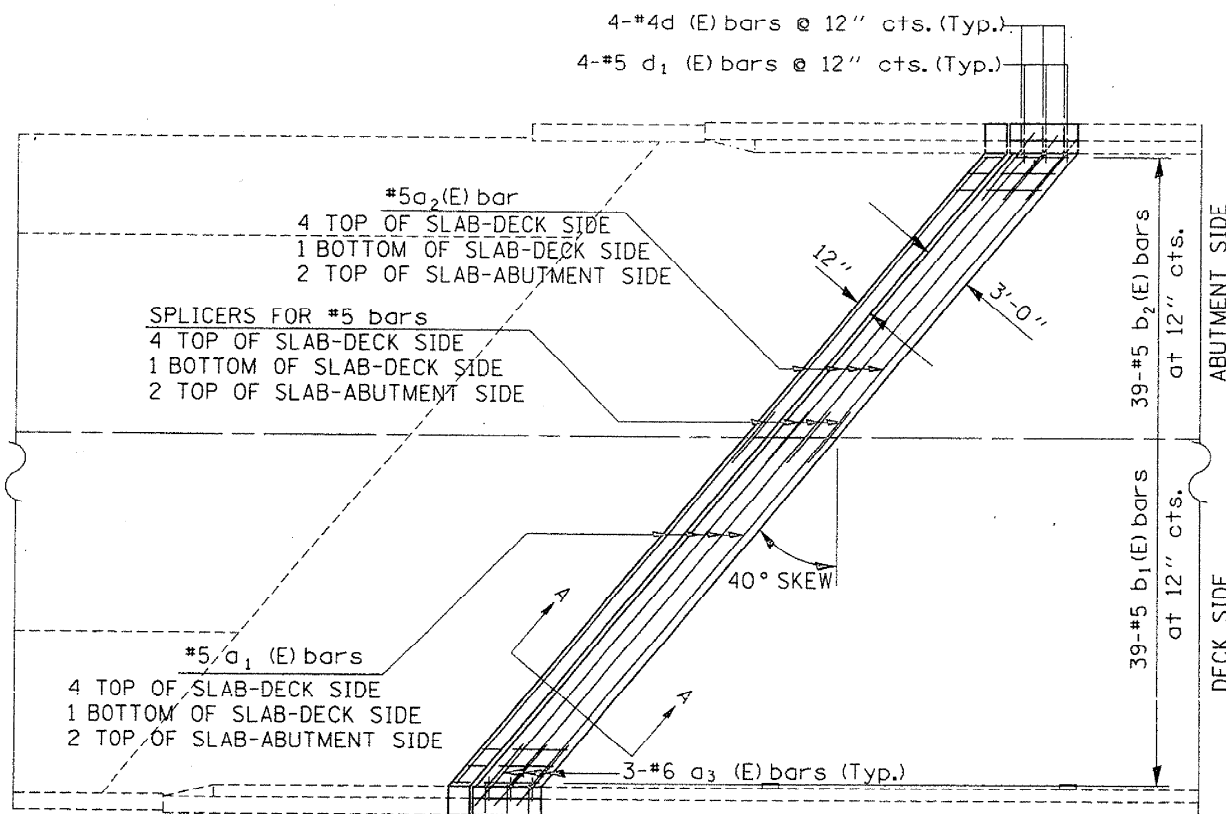
SECTION A-A

\*\* BONDED CONSTRUCTION JOINT

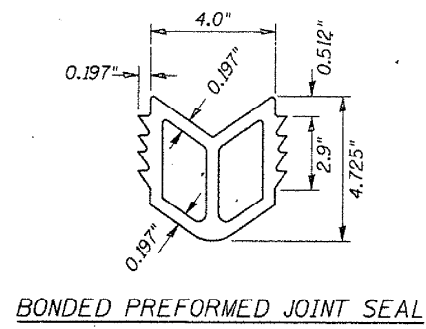


DETAIL A

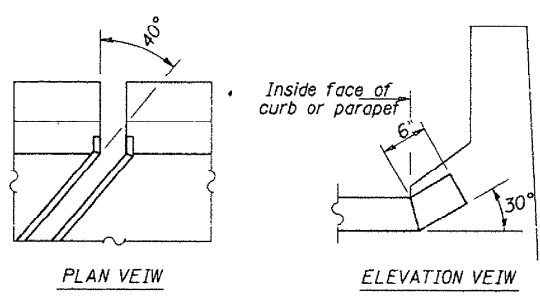
\* Furnish in segments of 20 ft. maximum length. Maximum space between installed segments shall be 3/16". Seal space with Silicone Sealant suitable for Structural Steel.



WEST ABUTMENT



BONDED PREFORMED JOINT SEAL



END OF PLATE DETAIL

### BILL OF MATERIAL

| Bar                               | No. | Size | Length | Shape   |      |
|-----------------------------------|-----|------|--------|---------|------|
| a <sub>1</sub> (E)                | 14  | #5   | 27'-9" | —       |      |
| a <sub>2</sub> (E)                | 14  | #5   | 22'-6" | —       |      |
| b <sub>1</sub> (E)                | 78  | #5   | 4'-0"  | ┌       |      |
| b <sub>2</sub> (E)                | 78  | #5   | 1'-2"  | ┌       |      |
| Concrete Superstructure           |     |      |        | Cu. Yd. | 16.0 |
| Reinforcement Bars (Epoxy Coated) |     |      |        | Pound   | 1160 |
| Bar Splicers                      |     |      |        | Each    | 14   |
| Structural Steel                  |     |      |        | Pound   | 3960 |

QUANTITIES ARE FOR BOTH STRUCTURES

### WEST ABUTMENT JOINT REPAIR DETAIL SHEET

|  |                       |                |           |
|--|-----------------------|----------------|-----------|
| FILE NAME =  | USER NAME = ppersonbr | DESIGNED - GMS | REVISED - |
| ct:\pw\work\pmsdot\ppersonbr\d0109687\70022-Bridge Repair Plan.dgn |                       | DRAWN - GMS    | REVISED - |
| PLOT SCALE = 40.0000' / IN.  |                       | CHECKED -      | REVISED - |
| PLOT DATE = 2/8/2010   |                       | DATE -         | REVISED - |

**STATE OF ILLINOIS  
DEPARTMENT OF TRANSPORTATION**

### AS-BUILT PLANS – S.N. 074-0067 FOR INFORMATION ONLY

SCALE: SHEET NO. 3 OF 3 SHEETS STA. TO STA.

| F.A.I. RTE.               | SECTION                   | COUNTY | TOTAL SHEETS | SHEET NO.          |
|---------------------------|---------------------------|--------|--------------|--------------------|
| 72                        | (58,74-66)&(74-67&68)RS-1 | PIATT  | 251          | 175                |
|                           |                           |        |              | CONTRACT NO. 70022 |
| ILLINOIS FED. AID PROJECT |                           |        |              |                    |