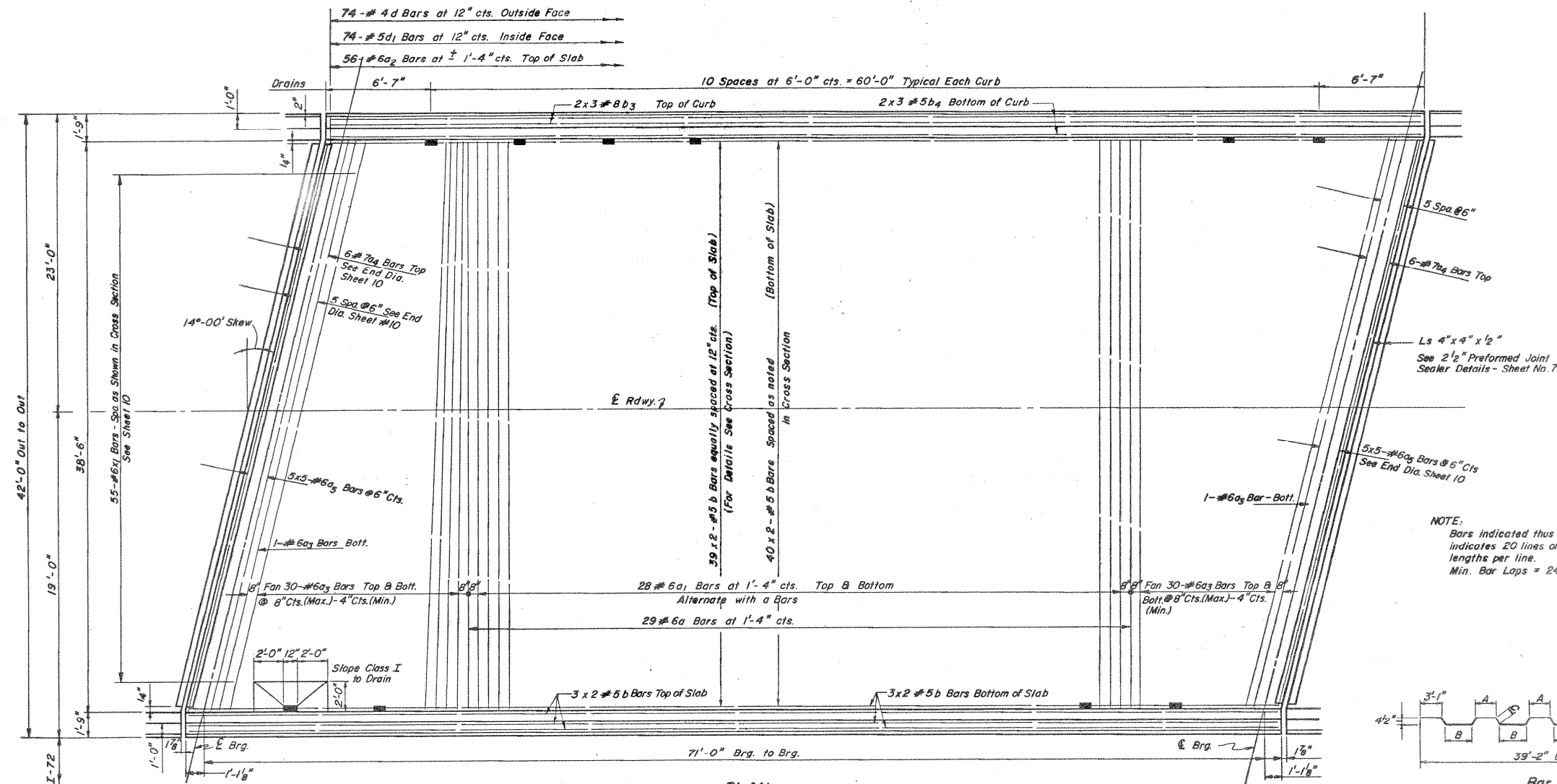


# AS-BUILT PLANS - S.N. 074-0063 & 074-0064 FOR INFORMATION ONLY

STATE OF ILLINOIS

ROUTE NO.	SECTION	COUNTY	TOTAL SHEETS	SHEET NO.	SHEET NO.
F.A.I. 72	74-68-B	PIATT	294	85	15
FED. ROAD DIST. NO. 7		ILLINOIS	FED. AID PROJECT		



FOR ONE STRUCTURE ONLY

*BILL OF MATERIAL				
Bar	No.	Size	Length	Shape
a	29	#6	40'-10"	—
a1	56	#6	38'-2"	—
a2	112	#6	4'-0"	—
a3	122	#6	38'-9"	—
a4	12	#7	39'-2"	—
a5	50	#6	5'-2"	—
b	182	#5	37'-0"	—
b3	12	#8	25'-9"	—
b4	12	#5	25'-2"	—
d	148	#4	4'-9"	└
d1	148	#5	3'-7"	└
g1	50	#4	10'-0"	└
m1	20	#4	5'-2"	—
m2	20	#4	6'-6"	—
x1	110	#6	7'-10"	—

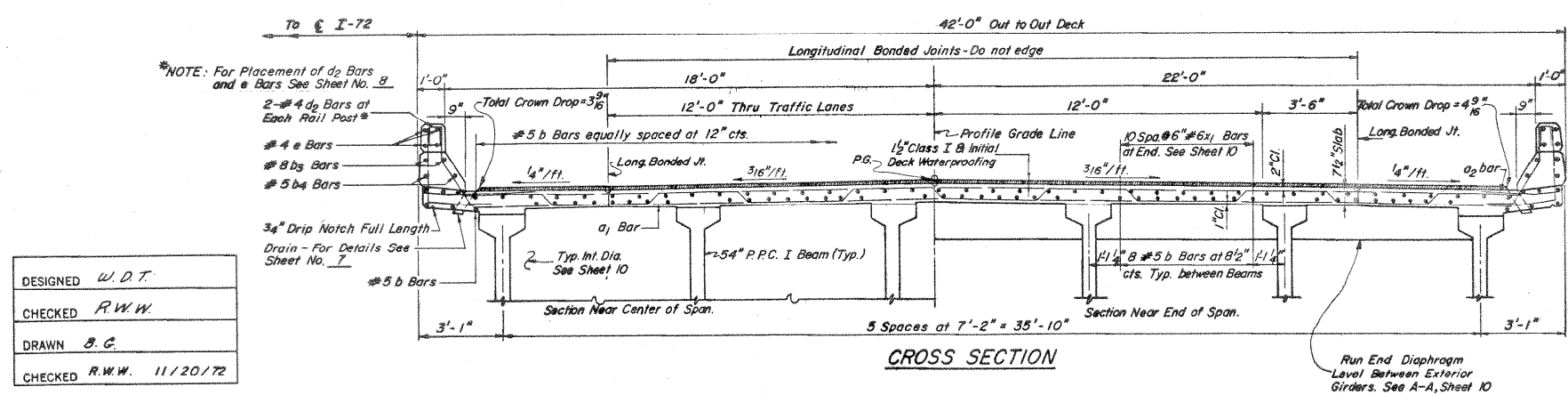
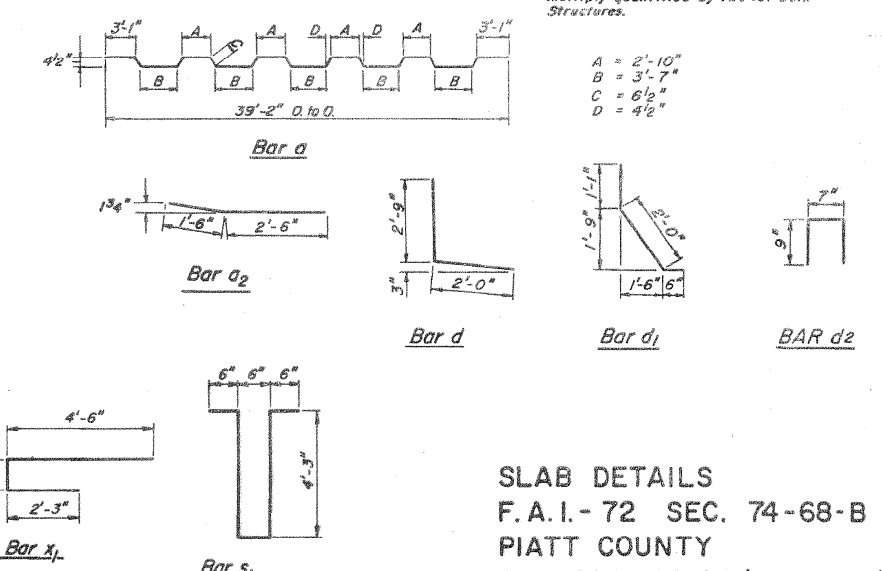
Reinforcement Bars Lbs. 25080  
 Class X Concrete Cu Yds. 98.2  
 Preformed Jt. Sealer 2 1/2 Lin. Ft. 87

Parapet Reinforcement and Class X Concrete are billed on Sheet No. 8

\*Multiply quantities by two for both Structures.

A = 2'-10"  
 B = 3'-7"  
 C = 6'-2"  
 D = 4'-2"

NOTE:  
 Bars indicated thus 20 x 3 - #5 etc.  
 indicates 20 lines of bars with 3  
 lengths per line.  
 Min. Bar Laps = 24 Diameter



DESIGNED	W. D. T.
CHECKED	R. W. W.
DRAWN	B. G.
CHECKED	R. W. W. 11/20/72