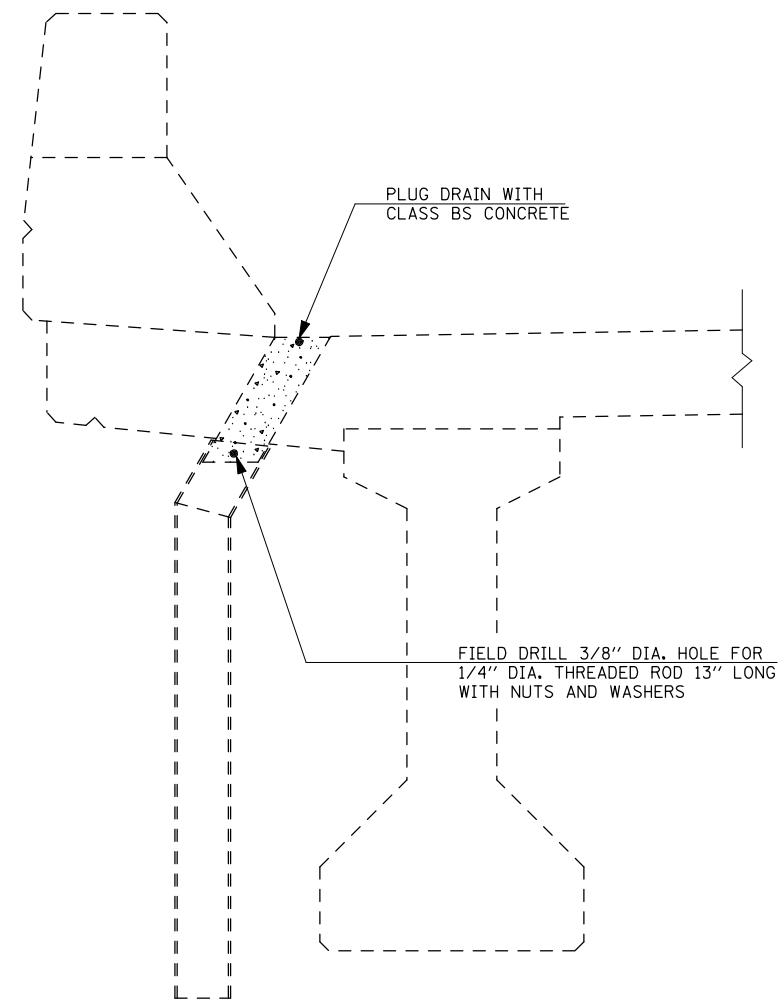


DECK REPAIR DETAILS

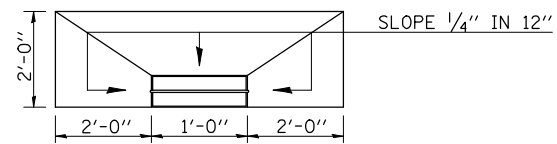
S.N. 074-0063 & 074-0064



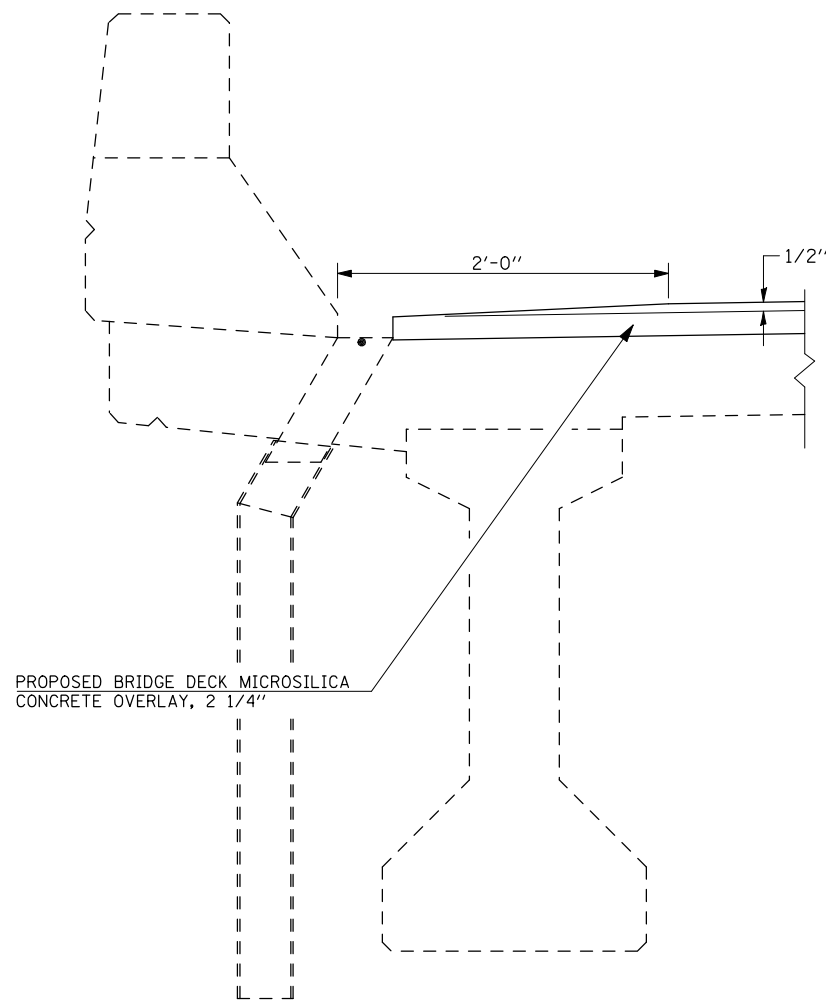
SECTION AT DRAIN
PLUG EXISTING DECK DRAIN

NOTE:

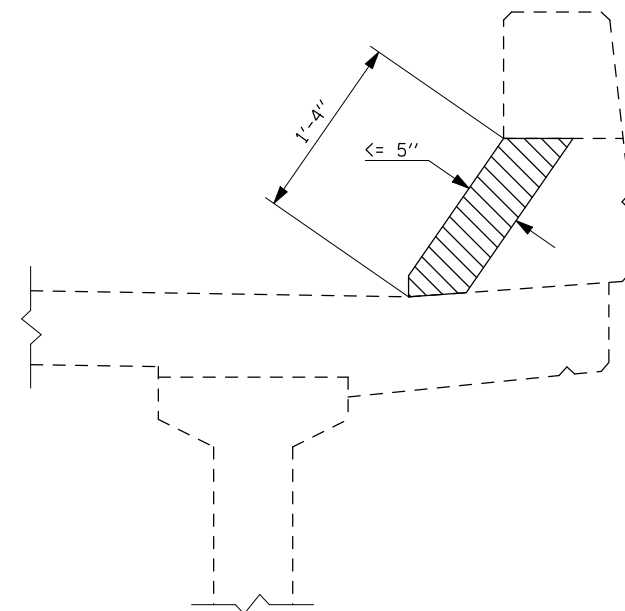
FOR EXISTING DECK DRAINS WITH EXTENSIONS, REMOVE THE BOTTOM PORTION OF EXISTING DRAIN PRIOR TO PLUGGING. (COST TO BE INCLUDED WITH PLUG EXISTING DECK DRAINS)



SLOPING PLAN
AT DRAIN



DETAIL FOR SLOPING MICROSILICA
CONCRETE OVERLAY AT DRAINS



SECTION AT PARAPET
STRUCTURAL REPAIR OF CONCRETE
(DEPTH EQUAL TO OR LESS THAN 5 INCHES)

FILE NAME =	USER NAME = ppersonbr	DESIGNED - GMS	REVISED -
ct:\pw\work\p\dot\personbr\d0109687\70022-Bridge Repair Plan.dgn		DRAWN - GMS	REVISED -
	PLOT SCALE = 40.0000 ' / IN.	CHECKED -	REVISED -
	PLOT DATE = 2/8/2010	DATE -	REVISED -

STATE OF ILLINOIS
DEPARTMENT OF TRANSPORTATION

DECK REPAIR DETAILS
S.N. 074-0063 & 074-0064

SCALE: SHEET NO. 4 OF 9 SHEETS STA. TO STA.

F.A.I. RTE.	SECTION	COUNTY	TOTAL SHEETS	SHEET NO.
72	(58,74-66)&(74-67&68)RS-1	PIATT	251	166
CONTRACT NO. 70022				
ILLINOIS FED. AID PROJECT				