

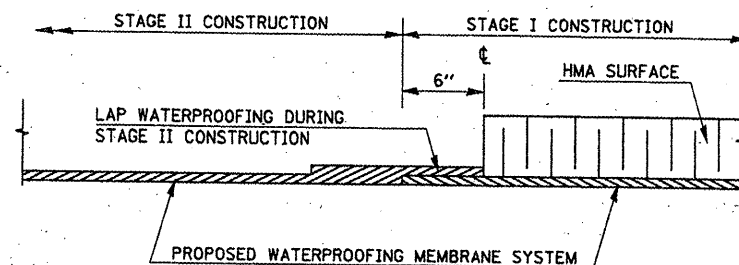
THE EXISTING OVERHEAD STRUCTURE WAS BUILT IN 1975 BY THE STATE OF ILLINOIS AS F.A.I. ROUTE 72, SECTION 74-68 HB AT STATION 1256+11.76 IN PIATT COUNTY. THE SUPERSTRUCTURE CONSISTS OF FIVE 48" P.P.C. I-BEAMS SUPPORTING A 7" R.C. SLAB. THE DECK HAS A 1 1/2" H.M.A. WEARING SURFACE WITH A WATERPROOFING MEMBRANE SYSTEM. THE SUPERSTRUCTURE IS SUPPORTED BY TWO STEM ABUTMENTS ON CONCRETE PILES AND ONE TRAPEZOIDAL PIER ON A SPREAD FOOTING WITH CONCRETE PILES. THE STRUCTURE MEASURES 213'-0" FROM BACK TO BACK OF ABUTMENT AND 248'-0" FROM BACK TO BACK OF APPROACH BENT. THE DECK HAS A CLEAR WIDTH OF 26'-6" AND AN OUT-TO-OUT WIDTH OF 30'-0".

METHOD OF CONSTRUCTION: STAGE CONSTRUCTION  
SEE PROPOSED IMPROVEMENTS ON THIS SHEET.

# GENERAL PLAN S.N. 074-0062



## WATERPROOFING TREATMENT AT STAGE CONSTRUCTION



## PROPOSED WORK

1. REMOVAL AND REPLACEMENT OF THE EXISTING H.M.A. WEARING SURFACE AND WATERPROOFING MEMBRANE SYSTEM.
2. PARTIAL DEPTH DECK PATCHING.
3. REMOVE THE EXISTING NEOPRENE EXPANSION DEVICES AND REPLACE WITH SILICONE JOINT SEALER AND POLYMER CONCRETE NOSING.
4. EXTEND OR PLUG FLOOR DRAINS.

## LEGEND

- H.M.A. SURFACE REMOVAL, DECK & PROPOSED 1 1/2" HMA WEARING SURFACE AND WATERPROOFING MEMBRANE SYSTEM
- H.M.A. SURFACE REMOVAL, DECK & PROPOSED 1 3/4" HMA WEARING SURFACE OVER APPROACHES
- EXISTING FLOOR DRAIN TO BE EXTENDED
- EXISTING FLOOR DRAIN TO BE PLUGGED

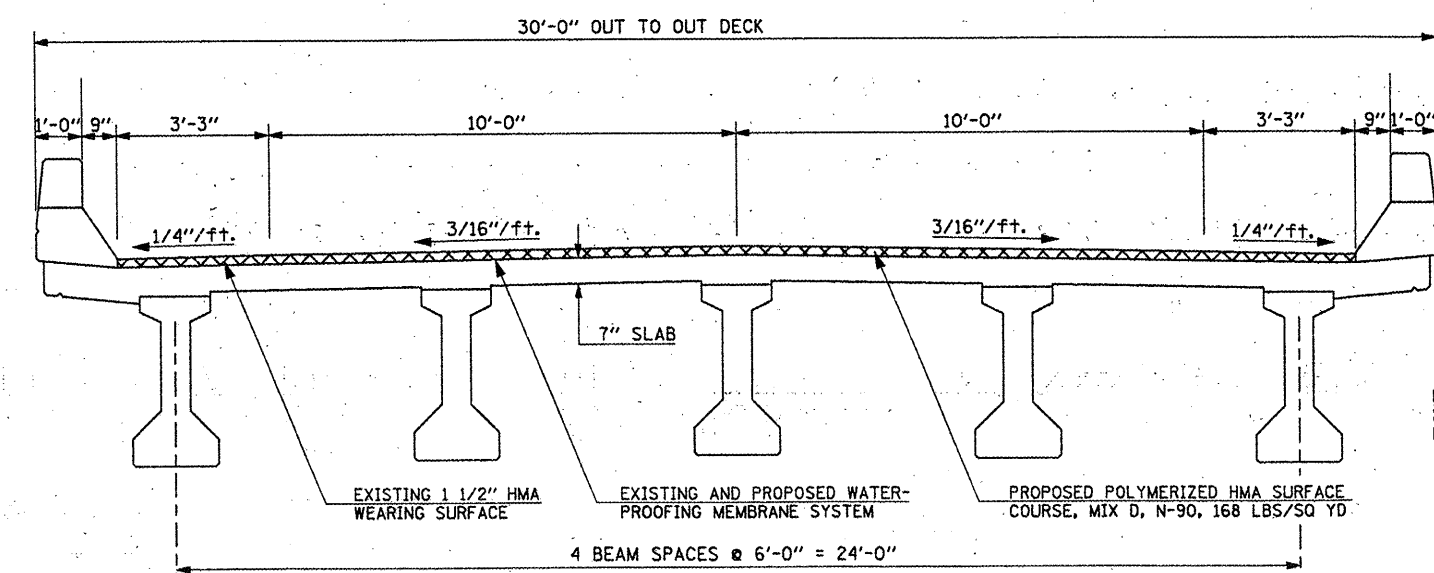
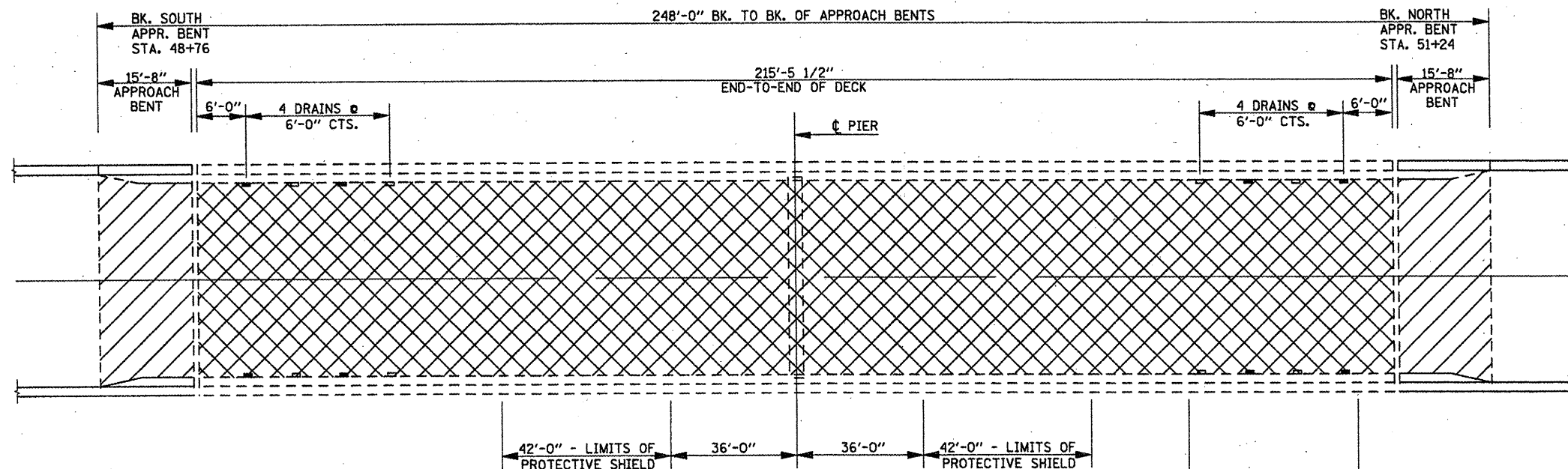
## TOTAL BILL OF MATERIALS

ITEM	UNIT	TOTAL
HMA SURFACE REMOVAL (DECK)	SQ YD	726.7
WATERPROOFING MEMBRANE SYSTEM	SQ YD	642.4
POLYMERIZED HMA SURFACE COURSE, MIX D, N-90	TON	62.0
DECK SLAB REPAIR (PARTIAL)	SQ YD	95.0
SILICONE JOINT SEALER, 1 1/2"	FOOT	56.0
POLYMER CONCRETE	CU FT	6.9
FLOOR DRAIN EXTENSION	EACH	8.0
PLUG EXISTING DECK DRAINS	EACH	8.0
PROTECTIVE SHIELD	SQ YD	224.0

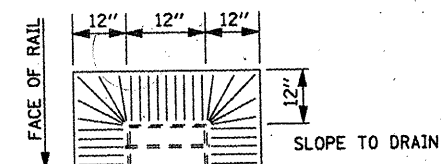
## GENERAL NOTES

PLAN DIMENSIONS AND DETAILS RELATIVE TO EXISTING PLANS ARE SUBJECT TO NOMINAL CONSTRUCTION VARIATIONS. THE CONTRACTOR SHALL FIELD VERIFY EXISTING DIMENSIONS AND DETAILS AFFECTING NEW CONSTRUCTION AND MAKE NECESSARY APPROVED ADJUSTMENTS PRIOR TO CONSTRUCTION OR ORDERING OF MATERIALS. SUCH VARIATIONS SHALL NOT BE CAUSE FOR ADDITIONAL COMPENSATION FOR A CHANGE IN SCOPE OF WORK, HOWEVER, THE CONTRACTOR WILL BE PAID FOR THE QUANTITY ACTUALLY FURNISHED AT THE UNIT PRICE BID FOR THE WORK.

THE DECK SLAB REPAIR, PARTIAL QUANTITY IS ESTIMATED AND THE ACTUAL LOCATIONS ARE TO BE DETERMINED IN THE FIELD BY THE ENGINEER AFTER THE H.M.A. WEARING SURFACE AND WATERPROOFING MEMBRANE ARE REMOVED.

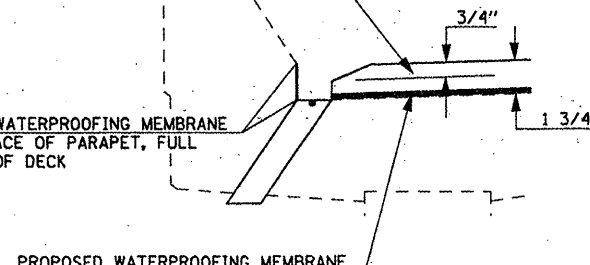


POLYMERIZED H.M.A. AROUND DRAINS SHALL BE COMPACTED TO THE SATISFACTION OF THE ENGINEER.

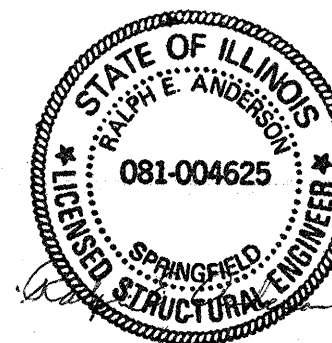


PLAN VIEW  
AT DRAIN

EXTEND WATERPROOFING MEMBRANE 2" UP FACE OF PARAPET, FULL LENGTH OF DECK



SECTION AT DRAIN



Expires 11/30/2010

FILE NAME =	USER NAME = pieranbr	DESIGNED - GMS	REVISED -
22-Bridge Repair Plan.dgn		DRAWN - GMS	REVISED -
PLOT SCALE = 48.0000 "/ IN.		CHECKED -	REVISED -
PLOT DATE = 2/6/2010		DATE -	REVISED -

STATE OF ILLINOIS  
DEPARTMENT OF TRANSPORTATION

GENERAL PLAN  
S.N. 074-0062

SCALE:	SHEET NO. 1 OF 6 SHEETS	STA.	TO STA.	F.A.I. RTE. 72	SECTION (58,74-66)&(74-67&68)RS-1	COUNTY PIATT	TOTAL SHEETS 251	SHEET NO. 157
							CONTRACT NO. 70022	
ILLINOIS FED. AID PROJECT								