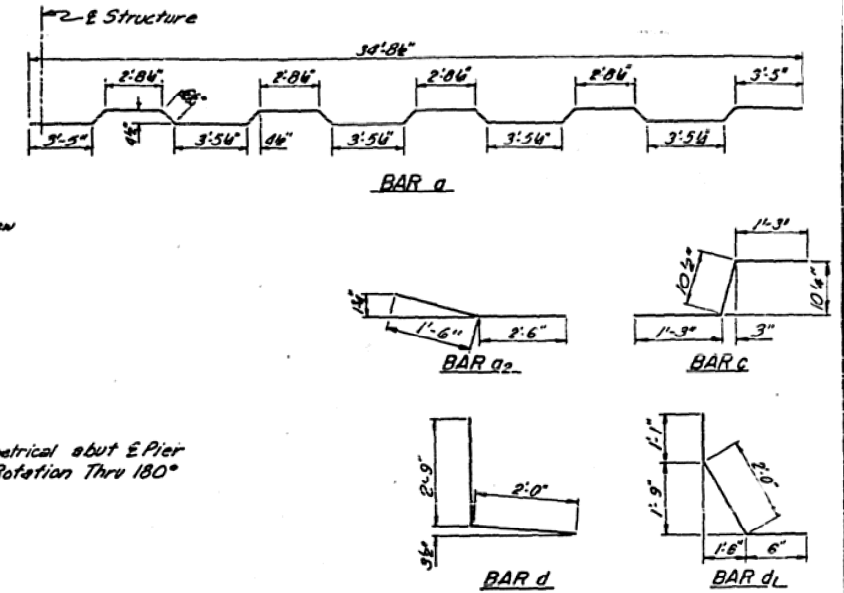
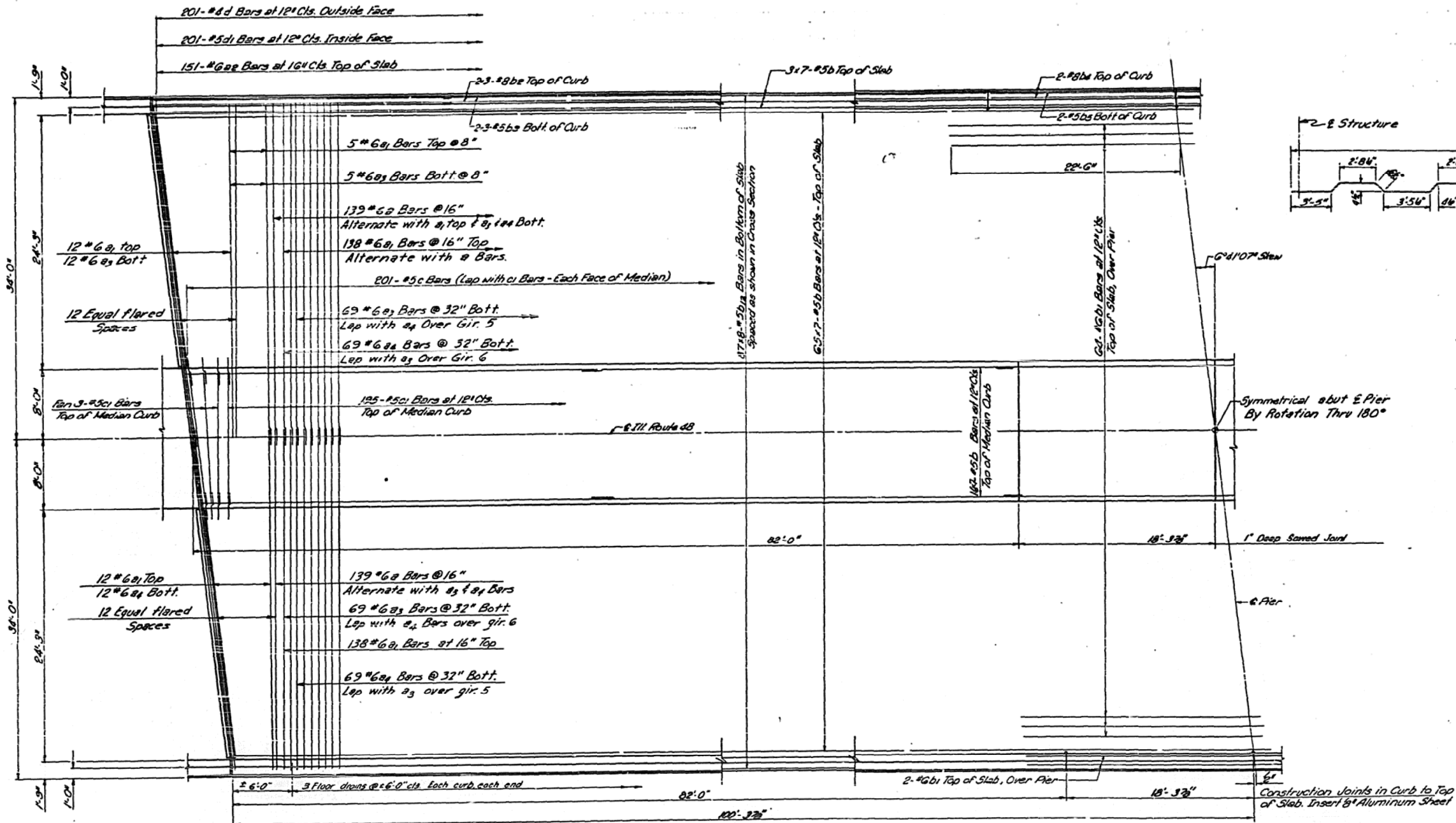


AS-BUILT PLANS - S.N. 074-0055 FOR INFORMATION ONLY

STATE OF ILLINOIS

ROUTE NO.	SECTION	COUNTY	TOTAL SHEETS	SHEET NO.	SHEET NO. 6 SHEETS 15
S.B.L. #	58-66	MACON & PIATT	77	21	
F.A.I. #	HB-2				
FED. ROAD DIST. NO. 7	ILLINOIS	FED. AID PROJECT			

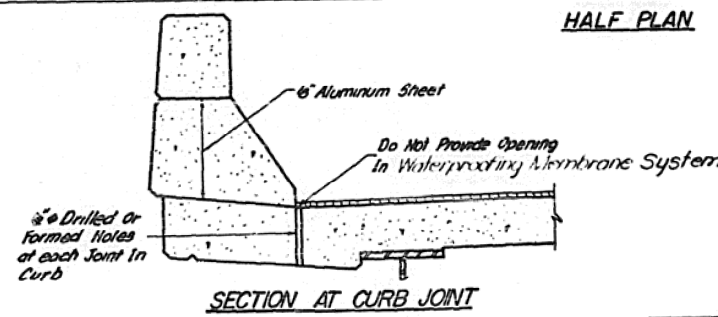


BILL OF MATERIAL

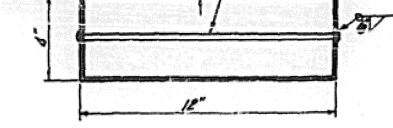
Bar	No	Size	Length	Shape
a	278	#6	36'-2"	
a1	334	#6	33'-9"	
a2	302	#6	4'-0"	
a3	172	#6	30'-3"	
a4	162	#6	37'-3"	
b	609	#5	29'-9"	
b1	69	#6	45'-0"	
b2	24	#8	28'-8"	
b3	24	#5	28'-2"	
b4	8	#8	18'-0"	
b5	8	#5	18'-0"	
b6	696	#5	26'-3"	
c	402	#5	3'-4 1/2"	
c1	201	#5	15'-0"	
d	402	#6	4'-9"	
d1	402	#5	3'-2"	
Reinforcement Bars		Lbs.	103,690	
Class X Concrete		Cu. Yds.	412.0	

* Parapet Reinforcement and Class X Concrete are billed on Sheet #8

HALF PLAN



Aluminum Sheets Welded
A.S.T.M. B 209 alloy 2061-T6
or Aluminum Extrusions A57M
O 221 alloy 6061-T6



FLOOR DRAIN

Cost Incidental to Contract

DESIGNED	K.S.V.
CHECKED	S.T.
DRAWN	C.S. 4-26-72
CHECKED	K.S.V.

SLAB DETAILS
F.A.I.-72 SECTION 58-66-HB-2
MACON & PIATT COUNTIES
STA. 932+59.22 (F.A.I.-72)