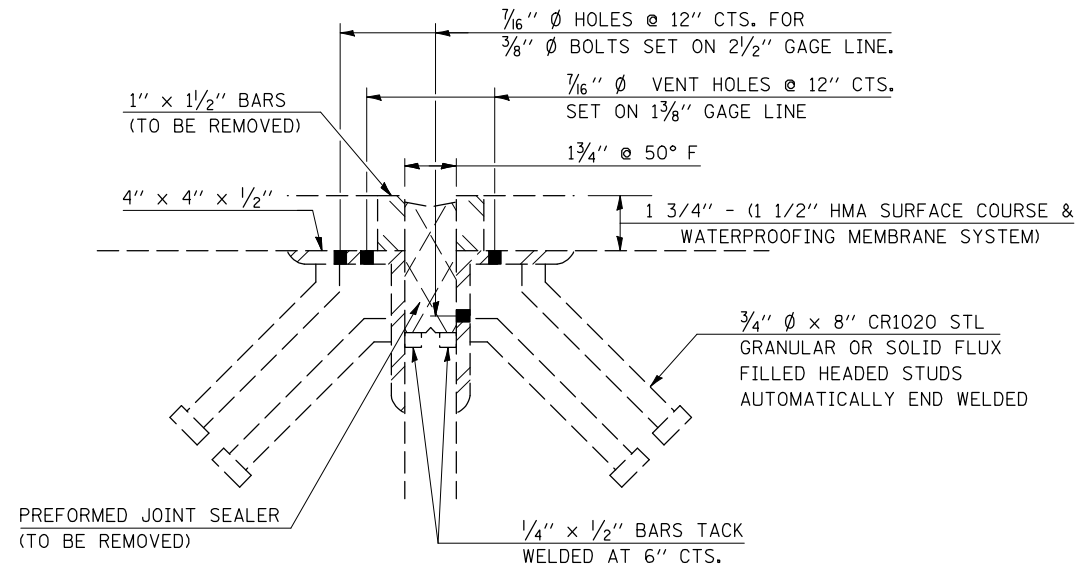


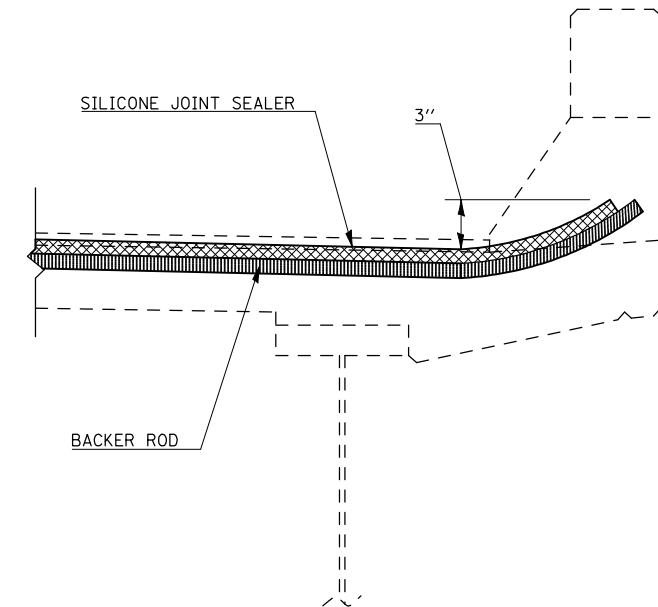
# EXPANSION JOINT REPAIR DETAILS

## S.N. 074-0055

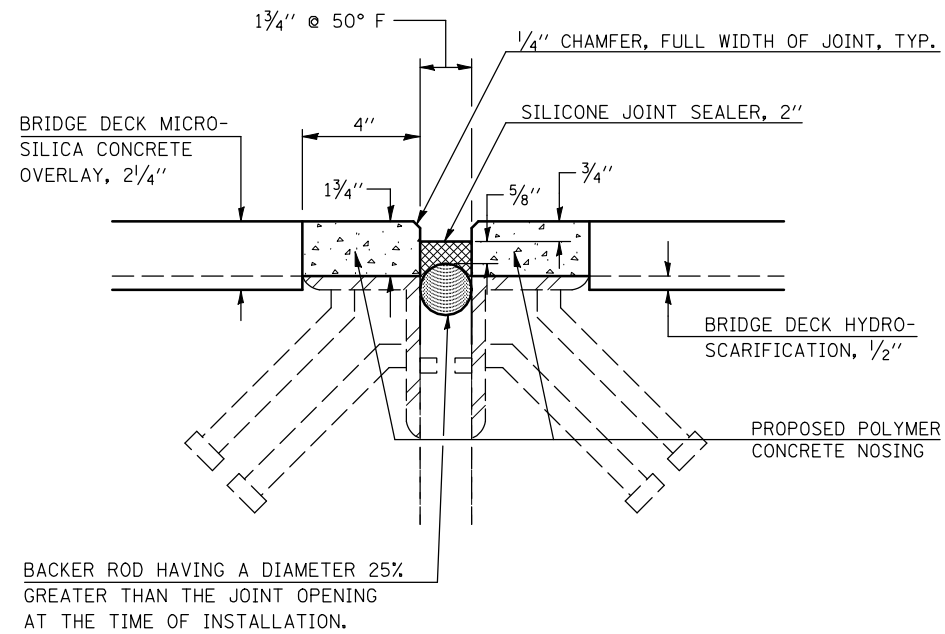
( NORTH AND SOUTH ABUTMENT JOINTS )



**EXISTING JOINT**



**SECTION AT PARAPET  
SILICONE JOINT SEALER**



**PROPOSED JOINT**

**NOTES**

REMOVE EXISTING PREFORMED JOINT SEALER AND 1" X 1/2" ARMOR EXTENSIONS PRIOR TO PLACING SILICONE JOINT SEALER. COST TO BE INCLUDED WITH SILICONE JOINT SEALER, 2".

FOR DETAILS AND ADDITIONAL PAY ITEMS ASSOCIATED WITH EXPANSION JOINT TREATMENT AT BONDED MEDIAN, SEE SHEET 8 OF 14.

**BILL OF MATERIALS**

ITEM	UNIT	TOTAL
SILICONE JOINT SEALER, 2"	FOOT	134.0
POLYMER CONCRETE	CU FT	17.3

FILE NAME =	USER NAME = ppersonbr	DESIGNED - GMS	REVISED -
ct:\pw\work\p\dot\personbr\d0109687\70022-Bridge Repair Plan.dgn		DRAWN - GMS	REVISED -
PLOT SCALE = 40.0000' / IN.	CHECKED -	REVISED -	REVISED -
PLOT DATE = 2/8/2010	DATE -	REVISED -	REVISED -

**STATE OF ILLINOIS  
DEPARTMENT OF TRANSPORTATION**

**EXPANSION JOINT REPAIR DETAILS  
S.N. 074-0055**

SCALE: SHEET NO. 7 OF 14 SHEETS STA. TO STA.

F.A.I. RTE.	SECTION	COUNTY	TOTAL SHEETS	SHEET NO.
72	(58,74-66)&(74-67&68)RS-1	PIATT	251	145
CONTRACT NO. 70022			ILLINOIS FED. AID PROJECT	