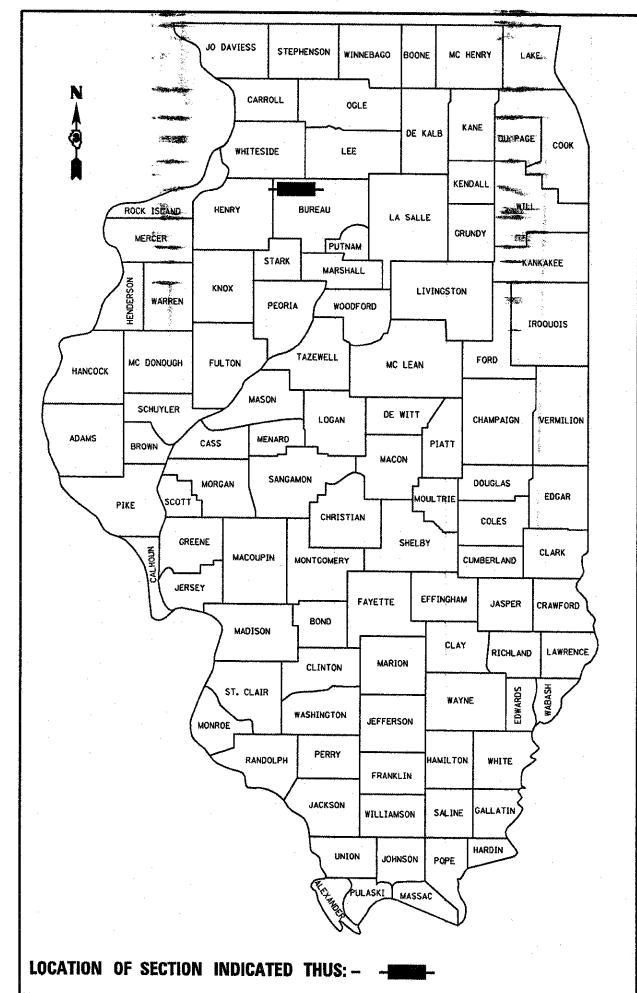


E.A.P. RTE.	SECTION	COUNTY	TOTAL SHEETS	SHEET NO.
587	(135,135 EXT)RS-6	BUREAU	8	1
		ILLINOIS	CONTRACT NO. 66946	

**D-93-044-09**



**FUNCTIONAL CLASSIFICATION  
MINOR ATERIAL (RURAL)**

**2007 ADT 1050 VPD  
%P.V. = 85 %S.U. = 7.5 %M.U. = 7.5**

STATE OF ILLINOIS  
DEPARTMENT OF TRANSPORTATION  
DIVISION OF HIGHWAYS

SUBMITTED 12/29 2009

*George F. Ryan*  
DEPUTY DIRECTOR OF HIGHWAYS, REGION ENGINEER

April 9, 2010  
*Scott E. Stort, P.E. P.D.*  
Acting ENGINEER OF DESIGN AND ENVIRONMENT

April 9, 2010  
*Christine M. Reed, P.D.*  
DIRECTOR OF HIGHWAYS, CHIEF ENGINEER

**PRINTED BY THE AUTHORITY  
OF THE STATE OF ILLINOIS**

STATE OF ILLINOIS  
DEPARTMENT OF TRANSPORTATION  
DIVISION OF HIGHWAYS  
**PROPOSED  
HIGHWAY PLANS**

**FAP ROUTE 587 (IL 92)  
SECTION (135,135 EXT)RS-6**

**BUREAU COUNTY  
TYPE OF IMPROVEMENT- 3P RESURFACING  
FROM HENRY COUNTY LINE TO IL 40**

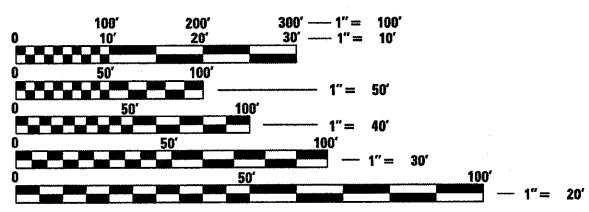
**C-93-081-09**

INDEX OF SHEETS

- 1 COVER SHEET
- 2 GENERAL NOTES
- 3 SUMMARY OF QUANTITIES
- 4 TYPICAL SECTIONS
- 5-6 SCHEDULES
- 7 PAVEMENT MARKING DETAILS
- 8 DETAILS

STANDARDS

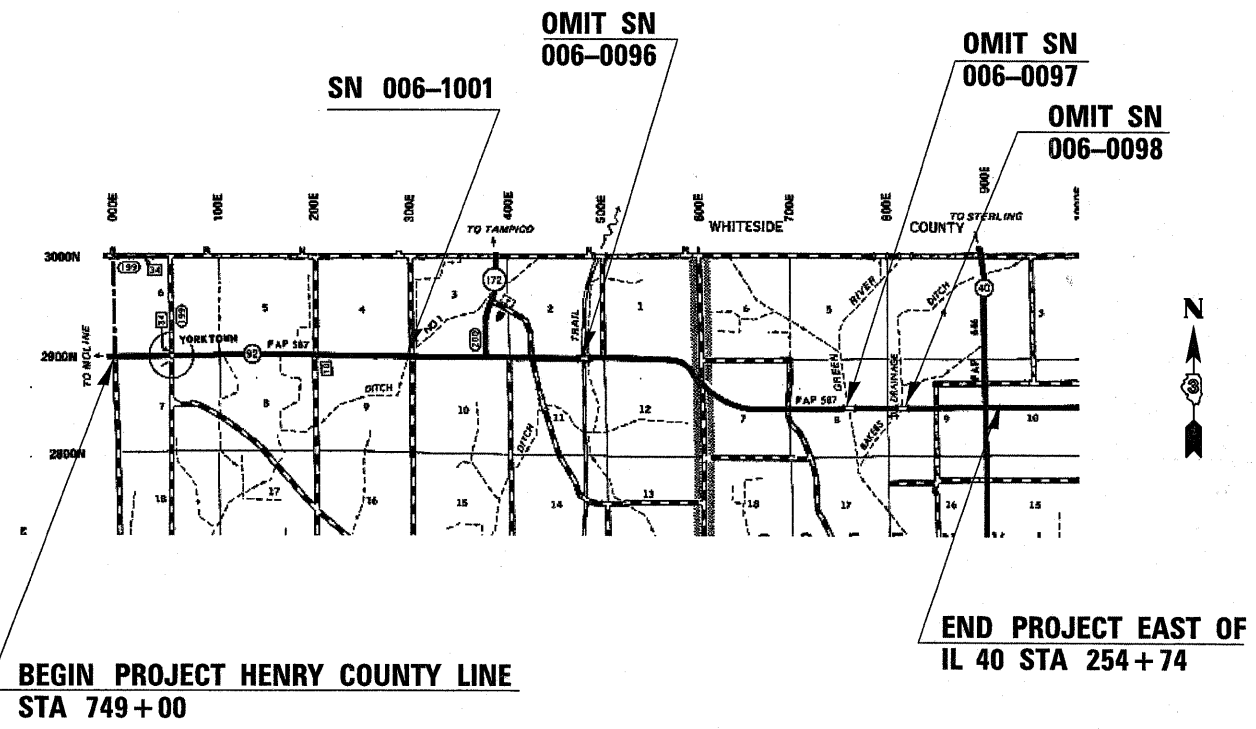
000001-05	STANDARD SYMBOLS, ABBREVIATIONS AND PATTERNS
001006	DECIMAL OF AN INCH AND OF A FOOT
406201-01	MAILBOX TURNOUT
630001-08	STEEL PLATE BEAM GUARDRAIL
630301-05	SHOULDER WIDENING FOR TYPE 1 (SPECIAL) GUARDRAIL TERMINALS
635006-03	REFLECTOR AND TERMINAL MARKER PLACEMENT
635011-02	REFLECTOR MARKER AND MOUNTING DETAILS
667101-01	PERMANENT SURVEY MARKERS
701001-02	OFF-ROAD OPERATIONS 2L, 2W, MORE THAN 15' (4.5 m) AWAY
701006-03	OFF-ROAD OPERATIONS 2L, 2W, 15' (4.5 m) TO 24" (600 mm) FROM PAVEMENT EDGE
701011-02	OFF-ROAD MOVING OPERATIONS 2L, 2W, DAY ONLY
701301-03	LANE CLOSURE, 2L, 2W, SHORT TIME OPERATIONS
701306-02	LANE CLOSURE, 2L, 2W, SLOW MOVING OPERATIONS DAY ONLY, FOR SPEEDS **e"
701311-03	LANE CLOSURE, 2L, 2W, MOVING OPERATIONS - DAY ONLY
701326-03	LANE CLOSURE, 2L, 2W, PAVEMENT WIDENING, FOR SPEEDS **e" 45 MPH
701901-01	TRAFFIC CONTROL DEVICES
780001-02	TYPICAL PAVEMENT MARKINGS
781001-03	TYPICAL APPLICATIONS RAISED REFLECTIVE PAVEMENT MARKERS



FULL SIZE PLANS HAVE BEEN PREPARED USING STANDARD ENGINEERING SCALES. REDUCED SIZED PLANS WILL NOT CONFORM TO STANDARD SCALES. IN MAKING MEASUREMENTS ON REDUCED PLANS, THE ABOVE SCALES MAY BE USED.

J.U.L.I.E.  
JOINT UTILITY LOCATION INFORMATION FOR EXCAVATION  
1-800-892-0123  
OR 811

**PROJECT ENGINEER-JOE KANNEL  
UNIT CHIEF-PAT BRABOY  
TOWNSHIPS-FAIRFIELD/GREENVILLE  
CONTRACT NO. 66946**



GROSS LENGTH = NET LENGTH = 49,424 FT. = 9.36 MILE