

F.A.U. RTE.	SECTION	COUNTY	TOTAL SHEETS	SHEET NO.
1521	W-RS-5	KANE	16	1
		ILLINOIS	CONTRACT NO. 60J72	

STATE OF ILLINOIS
DEPARTMENT OF TRANSPORTATION
DIVISION OF HIGHWAYS
PROPOSED
HIGHWAY PLANS
FAU ROUTE 1521: GALENA BLVD
IL 47 TO IL 56
SECTION: W-RS-5
RESURFACING
PROJECT: - -
KANE COUNTY
C-91-262-10

FOR INDEX OF SHEETS, SEE SHEET NO. 2

D-91-262-10

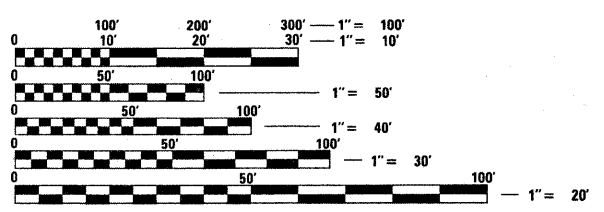


LOCATION OF SECTION INDICATED THUS: - [shaded box] -

THIS PROJECT IS LOCATED IN
 THE VILLAGE OF SUGAR GROVE

TRAFFIC DATA

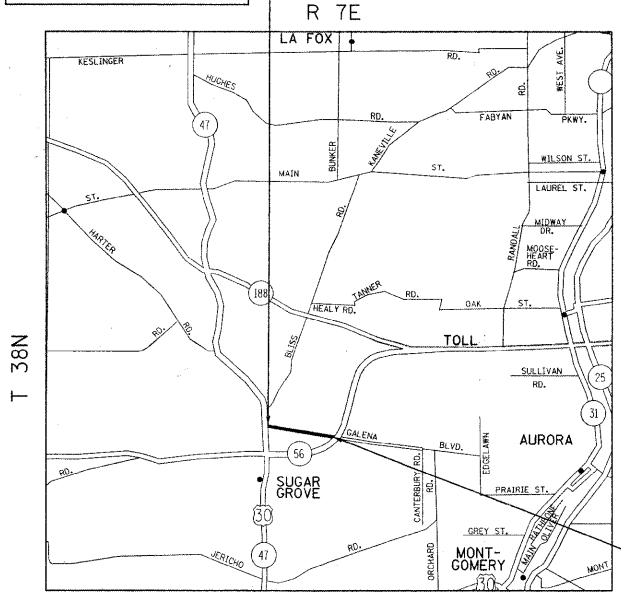
ADT (2006) = 7,700
SPEED LIMIT = 55 MPH



FULL SIZE PLANS HAVE BEEN PREPARED USING STANDARD ENGINEERING SCALES. REDUCED SIZED PLANS WILL NOT CONFORM TO STANDARD SCALES. IN MAKING MEASUREMENTS ON REDUCED PLANS, THE ABOVE SCALES MAY BE USED.

J.U.L.I.E
JOINT UTILITY LOCATION INFORMATION FOR EXCAVATION
1-800-892-0123 OR 811

PROJECT BEGINS
 STATION 145+21



PROJECT ENDS
 STATION 187+68

SUGAR GROVE TOWNSHIP

GROSS AND NET LENGTH OF PROJECT = 4247 FT. = .80 MILE

STATE OF ILLINOIS
DEPARTMENT OF TRANSPORTATION
DIVISION OF HIGHWAYS
 SUBMITTED JANUARY 26, 2010
Diane M. O'Keefe
 DEPUTY DIRECTOR OF HIGHWAYS, REGION ENGINEER
April 9, 2010
Scott E. Still, P.E. / RD
 ACTING ENGINEER OF DESIGN AND ENVIRONMENT
April 9, 2010
Christine M. Reed / RD
 DIRECTOR OF HIGHWAYS, CHIEF ENGINEER

PRINTED BY THE AUTHORITY
OF THE STATE OF ILLINOIS

PROJECT ENGINEER: DAN WILGREEN / (847) 705-4240
PROJECT MANAGER KEN ENG / (847) 705-4247
CONTRACT NO. 60J72

INDEX OF SHEETS

STATE STANDARDS

GENERAL NOTES

<u>SHEET NO.</u>	<u>DESCRIPTION</u>	<u>STANDARD NO.</u>	<u>DESCRIPTION</u>
1	TITLE SHEET	000001-05	TYPICAL SYMBOLS, ABBREVIATIONS AND PATTERNS
2	INDEX OF SHEETS, STATE STANDARDS & GENERAL NOTES	701301-03	LANE CLOSURE, 2L, 2W SHORT TIME OPERATIONS
3	SUMMARY OF QUANTITIES	701306-02	LANE CLOSURE, 2L, 2W, SLOW MOVING OPERATION DAY ONLY FOR SPEEDS > 45 MPH
4-5	EXISTING AND PROPOSED TYPICAL SECTIONS	701311-03	LANE CLOSURE, 2L, 2W, MOVING OPERATIONS - DAY ONLY
6-8	ROADWAY AND PAVEMENT MARKING PLANS	701501-05	URBAN LANE CLOSURE, 2L, 2W, UNDIVIDED
9	PAVEMENT PATCHING FOR HMA SURFACED PAVEMENT	701901-01	TRAFFIC CONTROL DEVICES
10	BUTT JOINT AND HMA TAPER DETAILS		
11	TRAFFIC CONTROL AND PROTECTION FOR SIDE ROADS, INTERSECTIONS AND DRIVEWAYS		
12	TYPICAL APPLICATIONS: RAISED REFLECTIVE PAVEMENT MARKERS (SNOW-PLOW RESISTANT)		
13	DISTRICT ONE TYPICAL PAVEMENT MARKINGS		
14	TRAFFIC CONTROL AND PROTECTION OF TURN BAYS (TO REMAIN OPEN TO TRAFFIC)		
15	PAVEMENT MARKING LETTERS AND SYMBOLS FOR TRAFFIC STAGING		
16	ARTERIAL INFORMATION SIGNING		

BEFORE STARTING ANY EXCAVATION, THE CONTRACTOR SHALL CALL "JULIE" AT (800) 892-0123 OR 811 FOR FIELD LOCATIONS OF BURIED ELECTRIC, TELEPHONE, AND GAS FACILITIES. (48 HOUR NOTIFICATION REQUIRED)

THE CONTRACTOR WILL NOT BE ABLE TO SET UP A YARD OR FIELD OFFICE ON STATE PROPERTY WITHOUT THE WRITTEN PERMISSION OF THE DEPARTMENT.

THE CONTRACTOR SHALL COORDINATE CONSTRUCTION ACTIVITIES WITH UTILITY COMPANIES AND THE VILLAGE OF SUGAR GROVE.

BUTT JOINTS WILL BE INSTALLED AT THE ENDS OF RESURFACING (WHERE RESURFACING MEETS EXISTING PAVEMENT) IN ACCORDANCE WITH THE "BUTT JOINT AND HMA TAPER DETAILS" SHEET INCLUDED IN THE PLANS UNLESS OTHERWISE SPECIFIED.

WHEN MILLED PAVEMENT IS OPEN TO TRAFFIC, THE MAXIMUM GRADE DIFFERENTIAL BETWEEN PASSES OF THE MILLING MACHINE SHALL NOT EXCEED 1/2 INCHES WHERE THE SPEED LIMIT IS 45 MPH OR LESS, AND 1 INCH WHERE THE SPEED LIMIT IS OVER 45 MPH. WITH WRITTEN APPROVAL FROM THE RESIDENT ENGINEER, A MAXIMUM GRADE DIFFERENTIAL OF 3 INCHES MAY BE ALLOWED IF THE EDGE OF THE MILLING IS SLOPED A MINIMUM OF 1:3 (V:H).

WHEN ARTIFICIAL LIGHTING IS UTILIZED IN NIGHT OPERATIONS, THE CONTRACTOR SHALL EXERCISE THE UTMOST PRECAUTIONS IN PREVENTING ADVERSE VISIBILITY TO THE MOTORING PUBLIC AND ADJOINING RESIDENTIAL AREAS.

ALL PAVEMENT PATCHING WILL BE DETERMINED IN THE FIELD BY THE ENGINEER.

BEFORE BEGINNING ANY WORK, THE CONTRACTOR SHALL RETAIN AND RECORD FOR FUTURE REFERENCE, ALL EXISTING PAVEMENT MARKING LINES (AND RAISED REFLECTIVE PAVEMENT MARKERS) IN ORDER THAT THESE LOCATIONS CAN BE RE-ESTABLISHED FOR STRIPING. EXACT LOCATIONS OF ALL PAVEMENT MARKINGS SHALL BE AS DIRECTED BY THE ENGINEER.

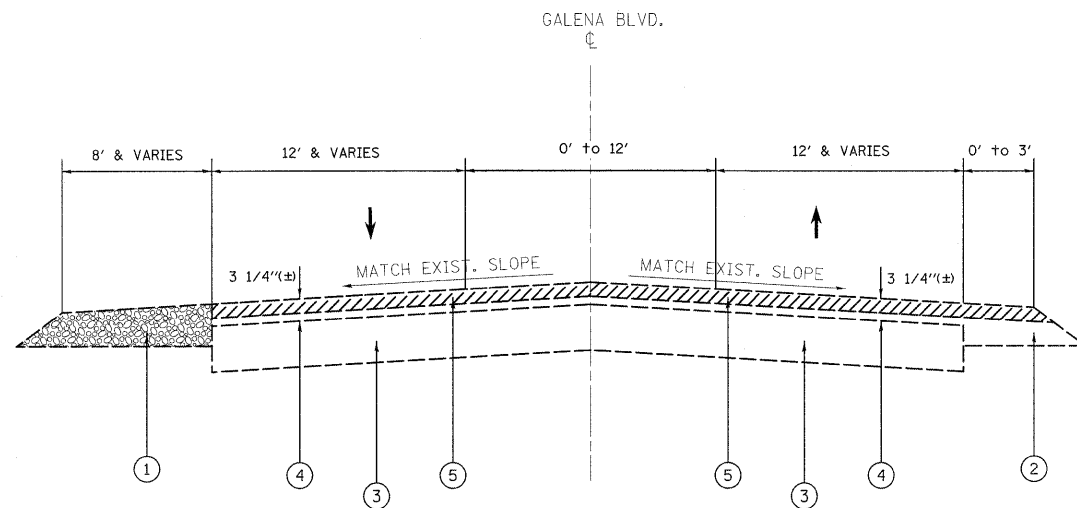
DOUBLE LANE MARKERS ARE TO BE USED AS SHOWN ON THE DISTRICT ONE DETAIL "TYPICAL APPLICATIONS - RAISED REFLECTIVE PAVEMENT MARKERS (SNOW-PLOW RESISTANT)" SHOWN IN THE PLANS.

THE RESIDENT ENGINEER SHALL CONTACT DON CHIARUGI, AREA TRAFFIC FIELD ENGINEER, AT (847) 741-9857 A MINIMUM OF 2 WEEKS PRIOR TO PLACEMENT OF FINAL PAVEMENT MARKINGS.

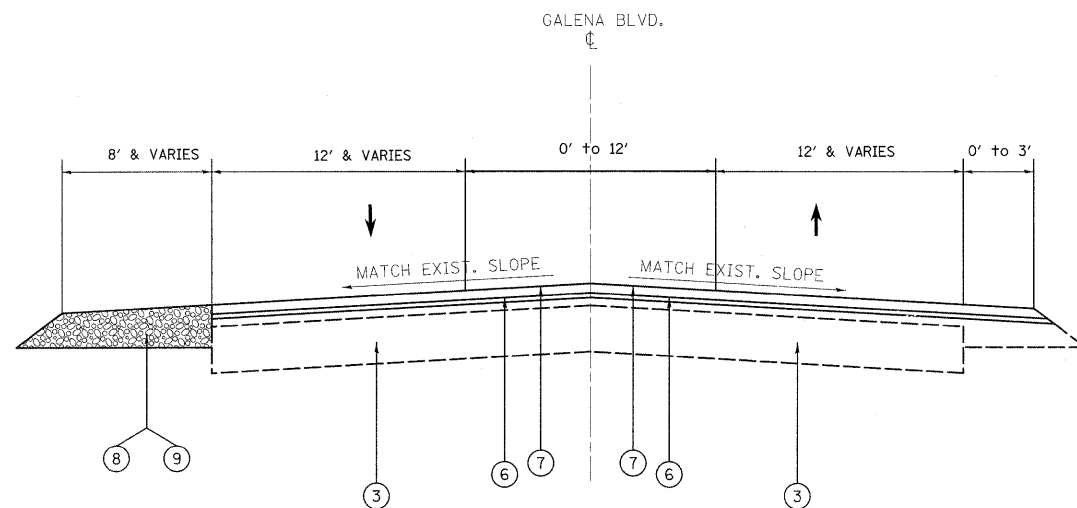
THE RESIDENT ENGINEER SHALL CONTACT THE TRAFFIC CONTROL SUPERVISOR AT (847) 705-4470 A MINIMUM OF 72 HOURS PRIOR TO THE INSTALLATION OF ANY TEMPORARY TRAFFIC CONTROL DEVICES.

FILE NAME =	USER NAME = whtetar	DESIGNED -	REVISED -	STATE OF ILLINOIS DEPARTMENT OF TRANSPORTATION	GALENA BLVD (IL 47 TO IL 56) INDEX OF SHEETS, STATE STANDARDS AND GENERAL NOTES				F.A.U. RTE:	SECTION	COUNTY	TOTAL SHEETS	SHEET NO.
c:\pwwork\pwwork\whtetar\d0175521\0126210-sht-plan.dgn		DRAWN -	REVISED -		1521	W-RS-5	KANE	16	2				
PLOT SCALE = 50.0000' / IN.		CHECKED -	REVISED -		SCALE: SHEET NO. OF SHEETS STA. TO STA.				ILLINOIS FED. AID PROJECT				
PLOT DATE = 2/2/2010		DATE -	REVISED -		CONTRACT NO. 60J72								

SUMMARY OF QUANTITIES			URBAN 100% STATE CONSTRUCTION TYPE CODE						SUMMARY OF QUANTITIES			URBAN 100% STATE CONSTRUCTION TYPE CODE							
CODE NO	ITEM	UNIT	TOTAL QUANTITIES	1000						CODE NO	ITEM	UNIT	TOTAL QUANTITIES	1000					
20201006	GRADING AND SHAPING SHOULDERS	UNIT	23	23						*78100100	RAISED REFLECTIVE PAVEMENT MARKER	EACH	175	175					
40600200	BITUMINOUS MATERIALS (PRIME COAT)	TON	17	17						78300200	RAISED REFLECTIVE PAVEMENT MARKER REMOVAL	EACH	145	145					
40600300	AGGREGATE (PRIME COAT)	TON	82	82						X0322256	TEMPORARY INFORMATION SIGNING	SQ FT	51.4	51.4					
40600400	MIXTURE FOR CRACKS, JOINTS, AND FLANGWAYS	TON	31	31															
40600826	POLYMERIZED LEVELING BINDER (MACHINE METHOD), IL-4.75, N50	TON	841	841															
40600895	CONSTRUCTING TEST STRIP	EACH	2	2						*	SPECIALY ITEMS								
40600982	HOT-MIX ASPHALT SURFACE REMOVAL - BUTT JOINT	SQ YD	81	81															
40603340	HOT-MIX ASPHALT SURFACE COURSE, MIX "D", N70	TON	1712	1712															
44000158	HOT-MIX ASPHALT SURFACE REMOVAL, 2 1/4"	SQ YD	20376	20376															
44201765	CLASS D PATCHES, TYPE II, 10 INCH	SQ YD	245	245															
44201769	CLASS D PATCHES, TYPE III, 10 INCH	SQ YD	164	164															
48102100	AGGREGATE WEDGE SHOULDER, TYPE B	TON	46	46															
67000400	ENGINEER'S FIELD OFFICE, TYPE A	CAL MO	6	6															
67100100	MOBILIZATION	L SUM	1	1															
70100460	TRAFFIC CONTROL AND PROTECTION, STANDARD 701306	L SUM	1	1															
70102620	TRAFFIC CONTROL AND PROTECTION, STANDARD 701501	L SUM	1	1															
70300100	SHORT-TERM PAVEMENT MARKING	FOOT	2650	2650															
70300210	TEMPORARY PAVEMENT MARKING - LETTERS AND SYMBOLS	SQ FT	146	146															
70300220	TEMPORARY PAVEMENT MARKING - LINE 4"	FOOT	19890	19890															
70300240	TEMPORARY PAVEMENT MARKING - LINE 6"	FOOT	450	450															
70300260	TEMPORARY PAVEMENT MARKING - LINE 12"	FOOT	633	633															
70300280	TEMPORARY PAVEMENT MARKING - LINE 24"	FOOT	38	38															
70301000	WORK ZONE PAVEMENT MARKING REMOVAL	SQ FT	884	884															
*78000100	THERMOPLASTIC PAVEMENT MARKING - LETTERS AND SYMBOLS	SQ FT	146	146															
*78000200	THERMOPLASTIC PAVEMENT MARKING - LINE 4"	FOOT	19890	19890															
*78000400	THERMOPLASTIC PAVEMENT MARKING - LINE 6"	FOOT	450	450															
*78000600	THERMOPLASTIC PAVEMENT MARKING - LINE 12"	FOOT	633	633															
*78000650	THERMOPLASTIC PAVEMENT MARKING - LINE 24"	FOOT	38	38															



EXISTING TYPICAL SECTION
GALENA BLVD.
STATION:
145+21 TO 169+77



PROPOSED TYPICAL SECTION
GALENA BLVD.
STATION:
145+21 TO 169+77

LEGEND

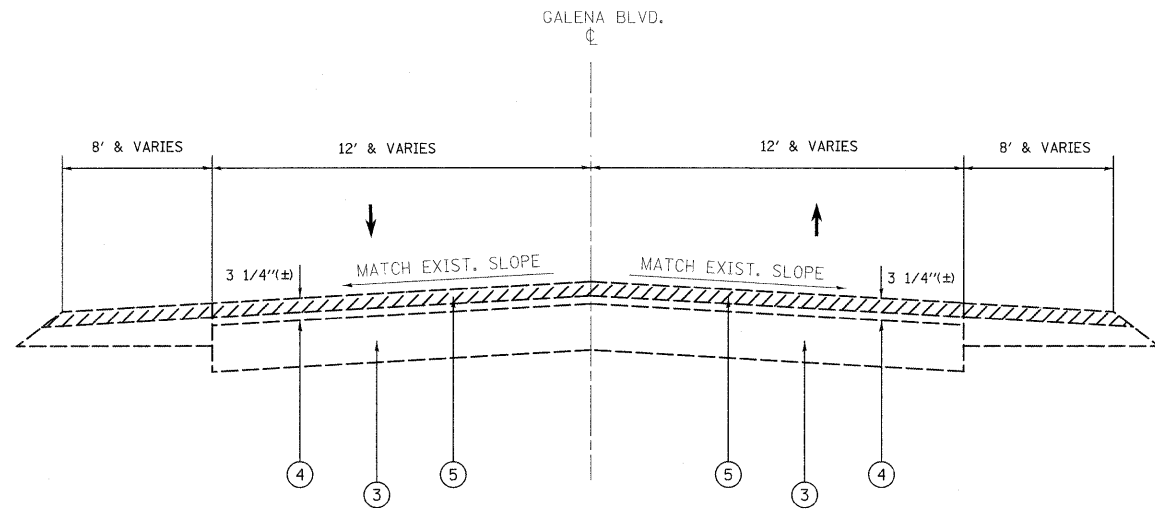
- ① EXISTING AGGREGATE SHOULDER
- ② EXISTING HOT-MIX ASPHALT SHOULDER, 8"
- ③ EXISTING HOT-MIX ASPHALT BASE COURSE, ± 9"
- ④ EXISTING HOT-MIX ASPHALT SURFACE, ± 3 1/4"
- ⑤ PROPOSED HOT-MIX ASPHALT SURFACE REMOVAL, 2 1/4"
- ⑥ PROPOSED POLYMERIZED LEVELING BINDER (MM), IL-4.75, N50, 3/4"
- ⑦ PROPOSED HOT-MIX ASPHALT SURFACE COURSE, MIX "D" N70, 1 1/2"
- ⑧ PROPOSED AGGREGATE WEDGE SHOULDER, TYPE B
- ⑨ PROPOSED GRADING AND SHAPING SHOULDERS

NOTES:

1. MILLING OF ROADWAY SHALL BE DONE PRIOR TO PATCHING.
2. THE UNIT WEIGHT USED TO CALCULATE ALL HMA SURFACE MIXTURES IS 112 IBS/SQ/YD/IN.
3. THE "AC TYPE" FOR POLYMERIZED HMA MIXES SHALL BE "SBS/SBR PG 70 -22 AND NON-POLYMERIZED HMA THE "AC TYPE" SHALL BE "PG 64 -22" UNLESS MODIFIED BY DISTRICT ONE SPECIAL PROVISIONS. FOR "PERCENT OF RAP" SEE DISTRICT ONE SPECIAL PROVISIONS.

HOT-MIX ASPHALT MIXTURE REQUIREMENTS

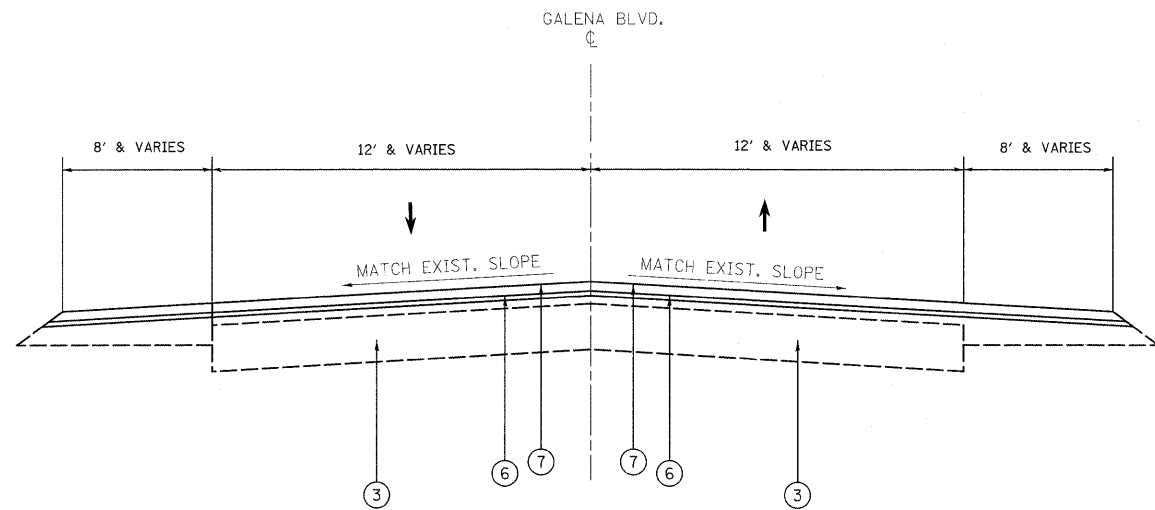
	MIXTURE TYPE	AIR VOIDS (%)
ROADWAY	HOT-MIX ASPHALT SURFACE COURSE, MIX "D", N70, (IL-9.5MM), 1 1/2"	4% @ 70 GYR
	POLYMERIZED LEVELING BINDER (MM), IL-4.75, N50, 3/4"	4% @ 50 GYR
PATCHES	CLASS D PATCHES, (BINDER IL-19.0 MM), 10"	4% @ 70 GYR



EXISTING TYPICAL SECTION
GALENA BLVD.
STATION:
169+77 TO 187+68

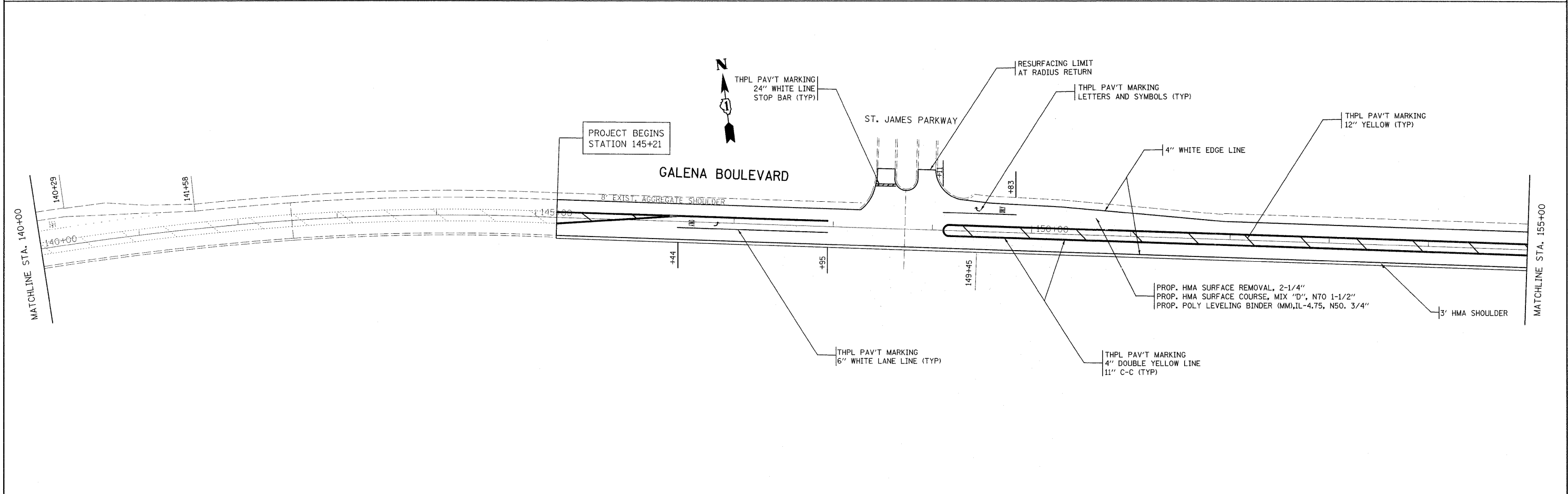
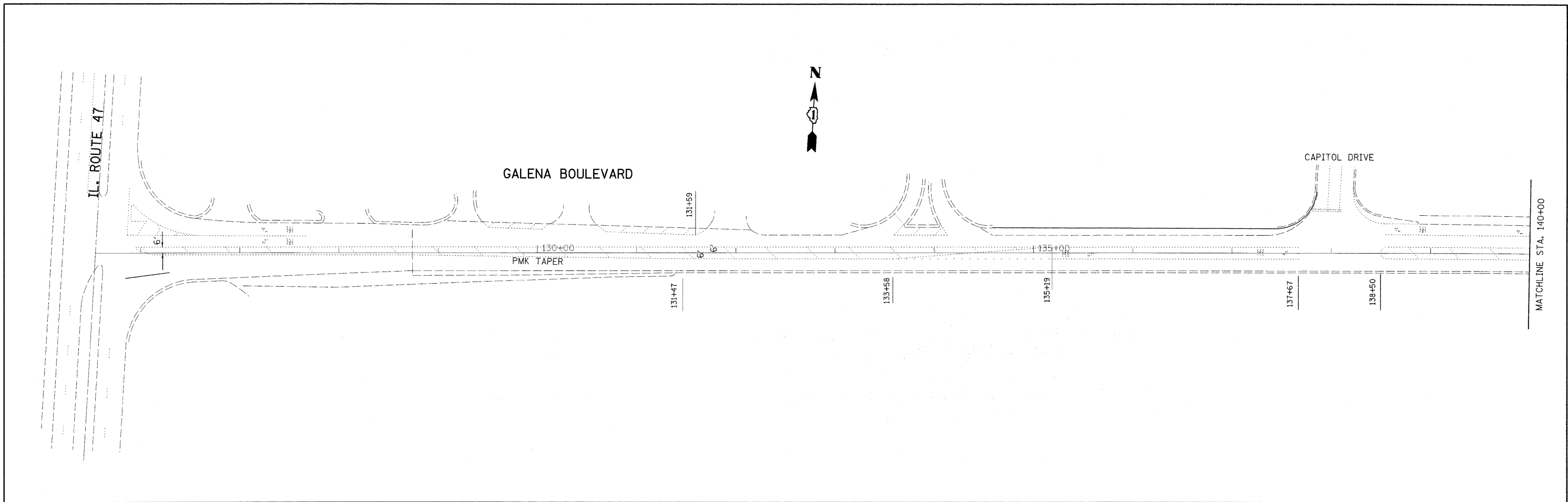
LEGEND

- ① EXISTING AGGREGATE SHOULDER
- ② EXISTING HOT-MIX ASPHALT SHOULDER, 8"
- ③ EXISTING HOT-MIX ASPHALT BASE COURSE, ± 9"
- ④ EXISTING HOT-MIX ASPHALT SURFACE, ± 3 1/4"
- ⑤ PROPOSED HOT-MIX ASPHALT SURFACE REMOVAL, 2 1/4"
- ⑥ PROPOSED POLYMERIZED LEVELING BINDER (MM), IL-4.75, N50, 3/4"
- ⑦ PROPOSED HOT-MIX ASPHALT SURFACE COURSE, MIX "D" N70, 1 1/2"
- ⑧ PROPOSED AGGREGATE WEDGE SHOULDER, TYPE B
- ⑨ PROPOSED GRADING AND SHAPING SHOULDERS

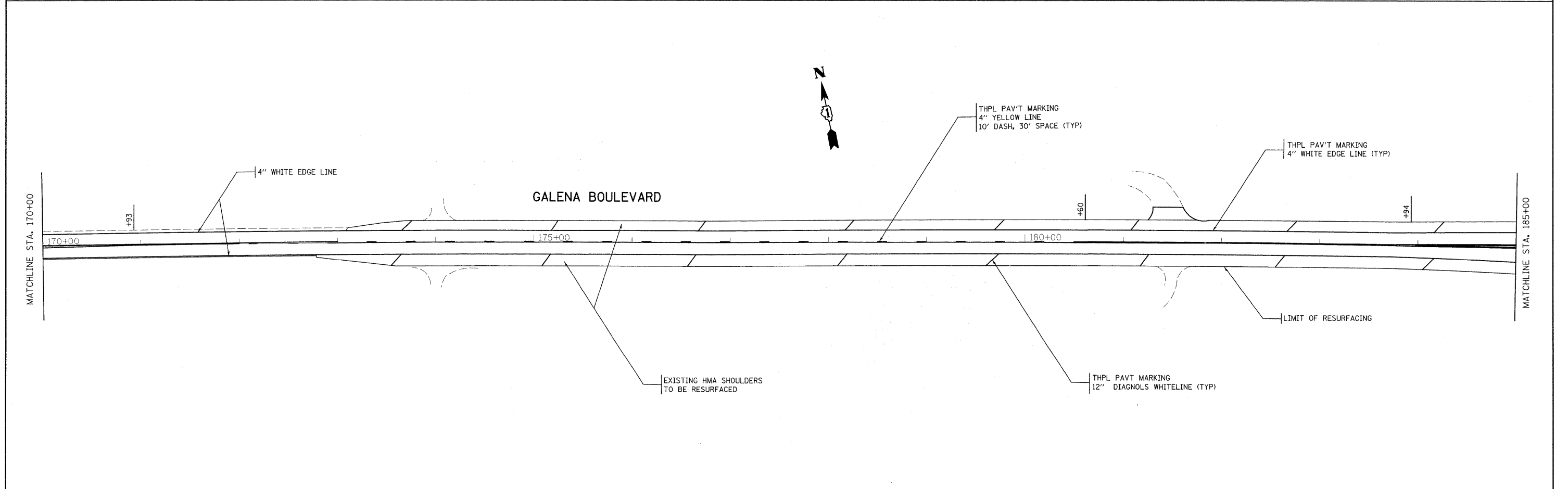
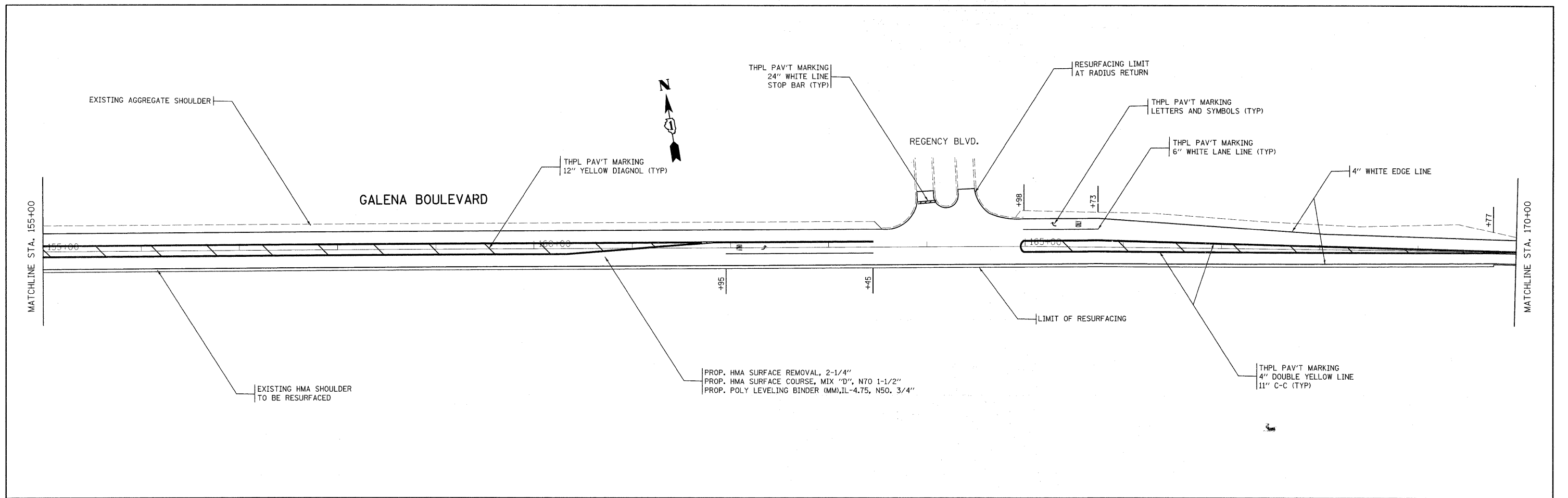


PROPOSED TYPICAL SECTION
GALENA BLVD.
STATION:
169+77 TO 187+68

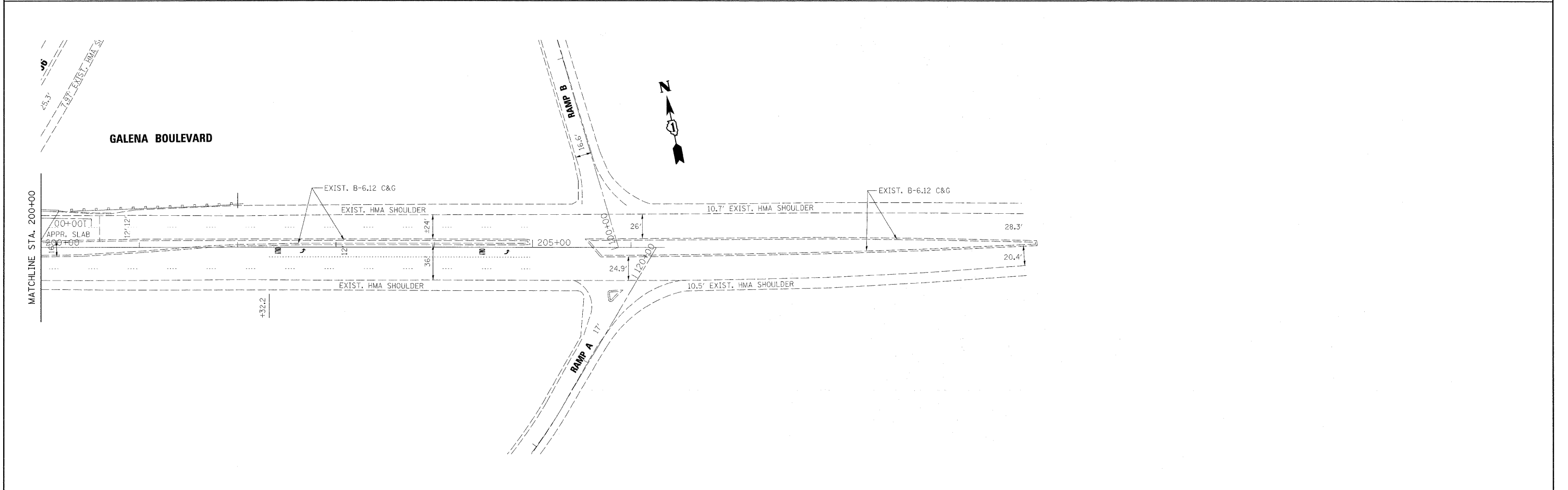
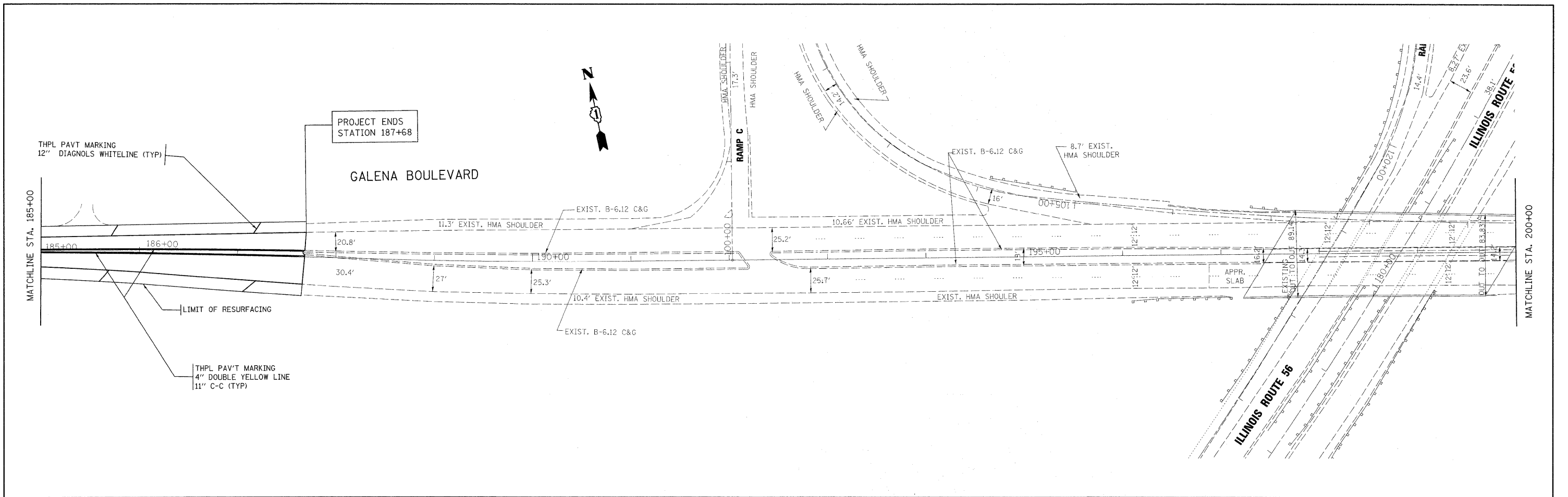
FILE NAME =	USER NAME = whitetar	DESIGNED - TARHONDA WHITE	REVISED -	STATE OF ILLINOIS DEPARTMENT OF TRANSPORTATION	GALENA BLVD. (ILL 47 TO ILL 56) EXISTING AND PROPOSED TYPICAL SECTIONS	F.A.U. RTE.	SECTION	COUNTY	TOTAL SHEETS	SHEET NO.
ot\pw_work\pwidot\whitetar\d2175521\10126	10-shit-plan.dgn	DRAWN -	REVISED -			1521	W-RS-5	KANE	16	5
	PLOT SCALE = 50.0000' / IN.	CHECKED -	REVISED -			CONTRACT NO. 60J72				
	PLOT DATE = 2/2/2010	DATE -	REVISED -			SCALE: NONE	SHEET NO. OF SHEETS	STA. 145+21 TO STA. 187+68	ILLINOIS FED. AID PROJECT	



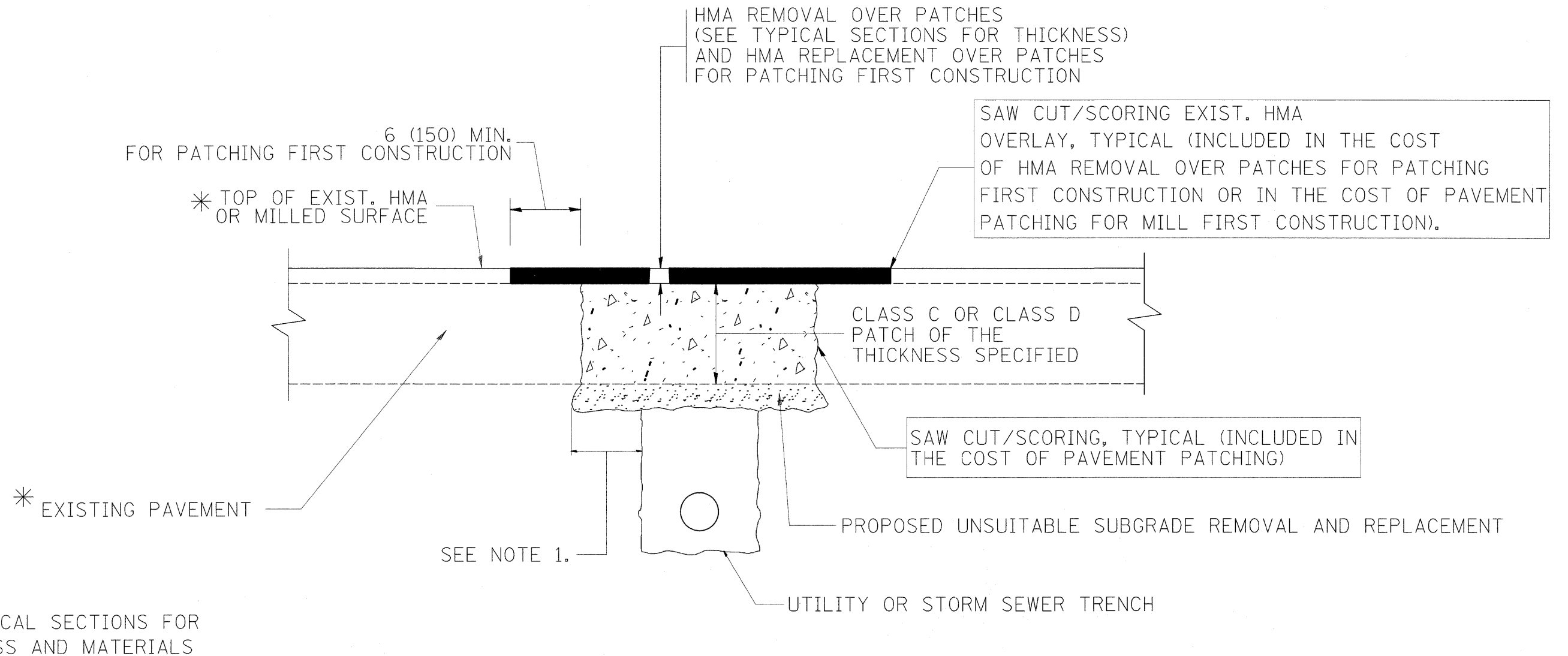
FILE NAME = c:\pwwork\pwwork\whiteta\20175521\0126	USER NAME = whiteta 18-shr-plan.dgn	DESIGNED -	REVISED -	STATE OF ILLINOIS DEPARTMENT OF TRANSPORTATION	GALENA BLVD. (ILL 47 TO ILL 56) ROADWAY AND PAVEMENT MARKING PLAN	F.A.U. RTE.	SECTION	COUNTY	TOTAL SHEETS	SHEET NO.
PLOT SCALE = 50,0000' / IN.	CHECKED -	REVISED -				W-RS-5	KANE	16	6	
PLOT DATE = 2/2/2010	DATE -	REVISED -				CONTRACT NO. 60J72		ILLINOIS FED. AID PROJECT		
						SCALE:	SHEET NO. 6 OF 19	STA. 145+21 TO STA. 187+68		



FILE NAME =	USER NAME = whtetar	DESIGNED -	REVISED -	STATE OF ILLINOIS DEPARTMENT OF TRANSPORTATION	GALENA BLVD. (ILL 47 TO ILL 56) ROADWAY AND PAVEMENT MARKING PLAN			F.A.U. RTE.	SECTION	COUNTY	TOTAL SHEETS	SHEET NO.
ct:\pw_work\pwwdot\whitetar\d017552\1\012610-shd-plan.dgn		DRAWN -	REVISED -		1521	W-RS-5	KANE	16	7			
PLOT SCALE = 50.0000' / IN.		CHECKED -	REVISED -		SCALE: SHEET NO. OF SHEETS STA. 145+21 TO STA. 187+68			CONTRACT NO. 60J72				
PLOT DATE = 2/2/2010		DATE -	REVISED -		ILLINOIS FED. AID PROJECT							



FILE NAME = c:\pwwork\pwwork\whitetar\d2175521\0126	USER NAME = whitetar 10-shr-plan.dgn	DESIGNED - DRAWN -	REVISED - REVISED -	STATE OF ILLINOIS DEPARTMENT OF TRANSPORTATION	GALENA BLVD. (ILL 47 TO ILL 56) ROADWAY AND PAVEMENT MARKING PLAN			F.A.U RTE. 1521	SECTION W-RS-5	COUNTY KANE	TOTAL SHEETS 16	SHEET NO. 8
PLOT SCALE = 50,0000' / IN.					SCALE:	SHEET NO.	OF	SHEETS	STA. 145+21 TO STA. 187+68	CONTRACT NO. 60J72		
PLOT DATE = 2/2/2010					DATE -	ILLINOIS FED. AID PROJECT						



NOTES:

1. THE WIDTH OF THE FULL DEPTH PATCH OVER A TRENCH SHALL BE 12 (300) WIDER ON EACH SIDE OF THE TRENCH.
2. FOR METHOD OF MEASUREMENT AND BASIS OF PAYMENT, SEE RECURRING SPECIAL PROVISION "PATCHING WITH HOT-MIX ASPHALT OVERLAY REMOVAL".

SEQUENCE OF CONSTRUCTION (PATCHING FIRST)

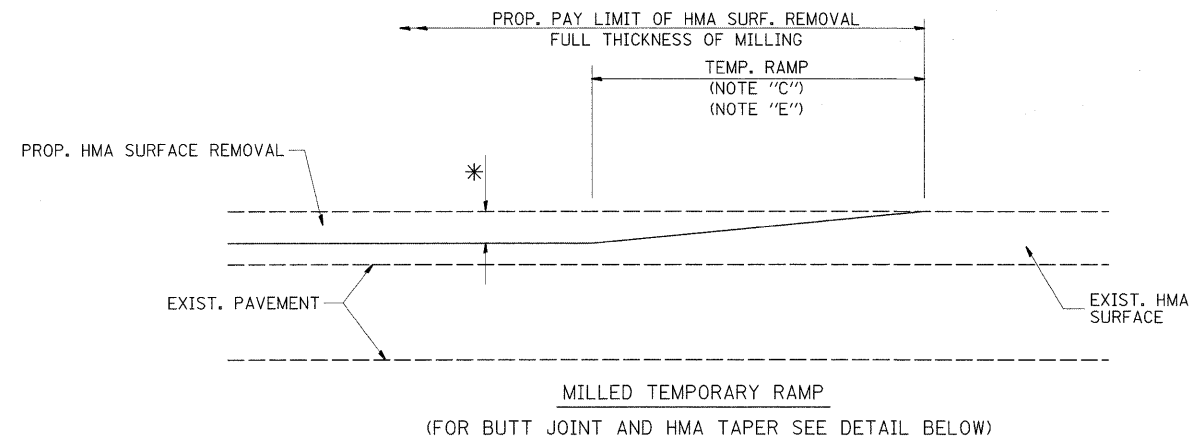
1. REMOVE THE EXISTING HMA MATERIAL OVER THE AREA TO BE PATCHED.
2. REMOVE AND REPLACE WITH CLASS C OR D PATCH.
3. REPLACE HMA MATERIAL OVER THE AREA TO BE PATCHED.

SEQUENCE OF CONSTRUCTION (MILLING FIRST)

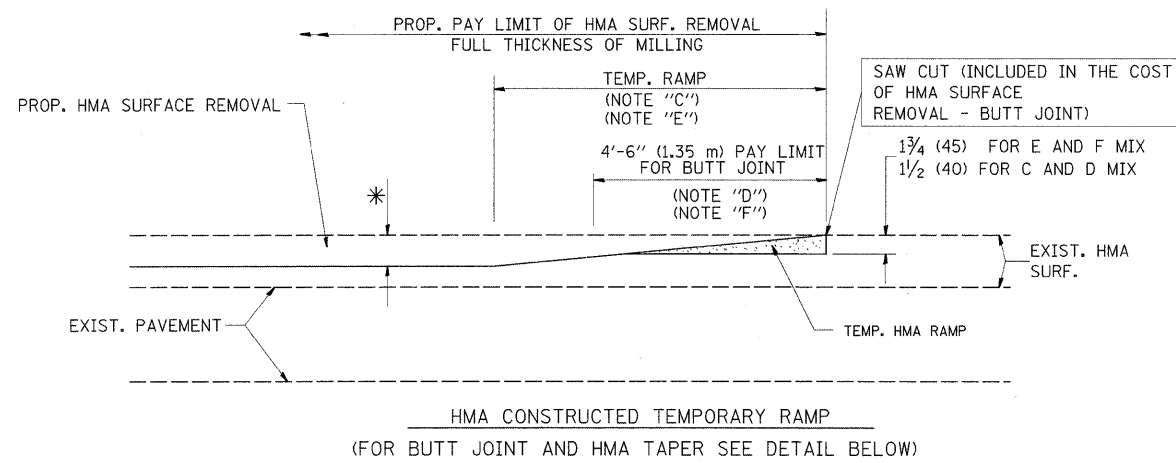
1. MILL HMA FIRST IF THERE IS AT LEAST 4 1/2 INCHES OR MORE OF HMA MATERIAL ON TOP OF THE EXISTING PAVEMENT OR IF THE PAVEMENT IS FULL DEPTH HMA. A MINIMUM OF 2 INCHES OF HMA MATERIAL SHALL BE IN PLACE AFTER MILLING.
2. REMOVE AND REPLACE WITH FULL DEPTH CLASS D PATCHES TO TOP OF MILLED SURFACE.

ALL DIMENSIONS ARE IN INCHES (MILLIMETERS) UNLESS OTHERWISE SHOWN.

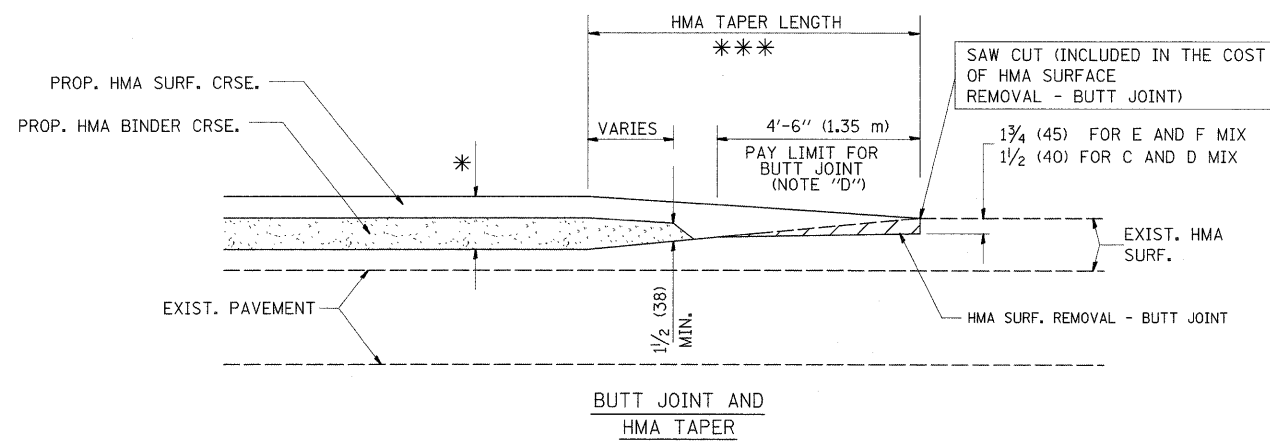
FILE NAME =	USER NAME = whtetar	DESIGNED - R. SHAH	REVISED - A. ABBAS 04-27-98	STATE OF ILLINOIS DEPARTMENT OF TRANSPORTATION	PAVEMENT PATCHING FOR HMA SURFACED PAVEMENT	F.A.U. RTE.	SECTION	COUNTY	TOTAL SHEETS	SHEET NO.
ct:\pw_work\PWIDOT\WHITETAR\08175521\Dis	Std.dgn	DRAWN -	REVISED - R. BORO 01-01-07			1521	W-RS-5	KANE	16	9
PLOT SCALE = 50,0000 ' / IN.	CHECKED -	REVISED - R. BORO 09-04-07				BD400-04 (BD-22)		CONTRACT NO. 60J72		
PLOT DATE = 2/2/2010	DATE - 10-25-94	REVISED - K. ENG 10-27-08				FED. ROAD DIST. NO. 1 ILLINOIS FED. AID PROJECT				
					SCALE: NONE	SHEET NO. 1 OF 1 SHEETS		STA.	TO STA.	



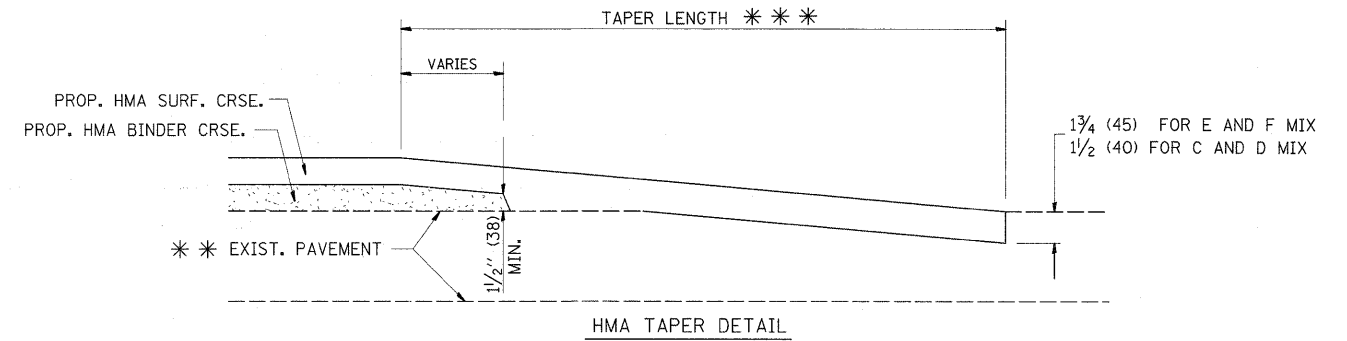
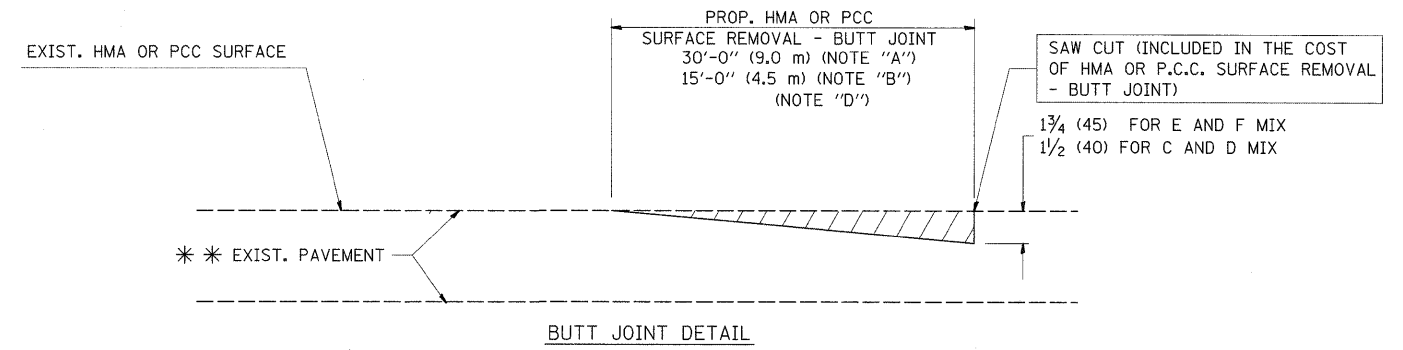
OPTION 1



**OPTION 2
TYPICAL TEMPORARY RAMP**



**TYPICAL BUTT JOINT AND HMA TAPER
FOR MILLING AND RESURFACING**



**TYPICAL BUTT JOINT AND HMA TAPER
FOR RESURFACING ONLY**

*** PC CONCRETE, HMA OR HMA RESURFACED PAVEMENT.

NOTES

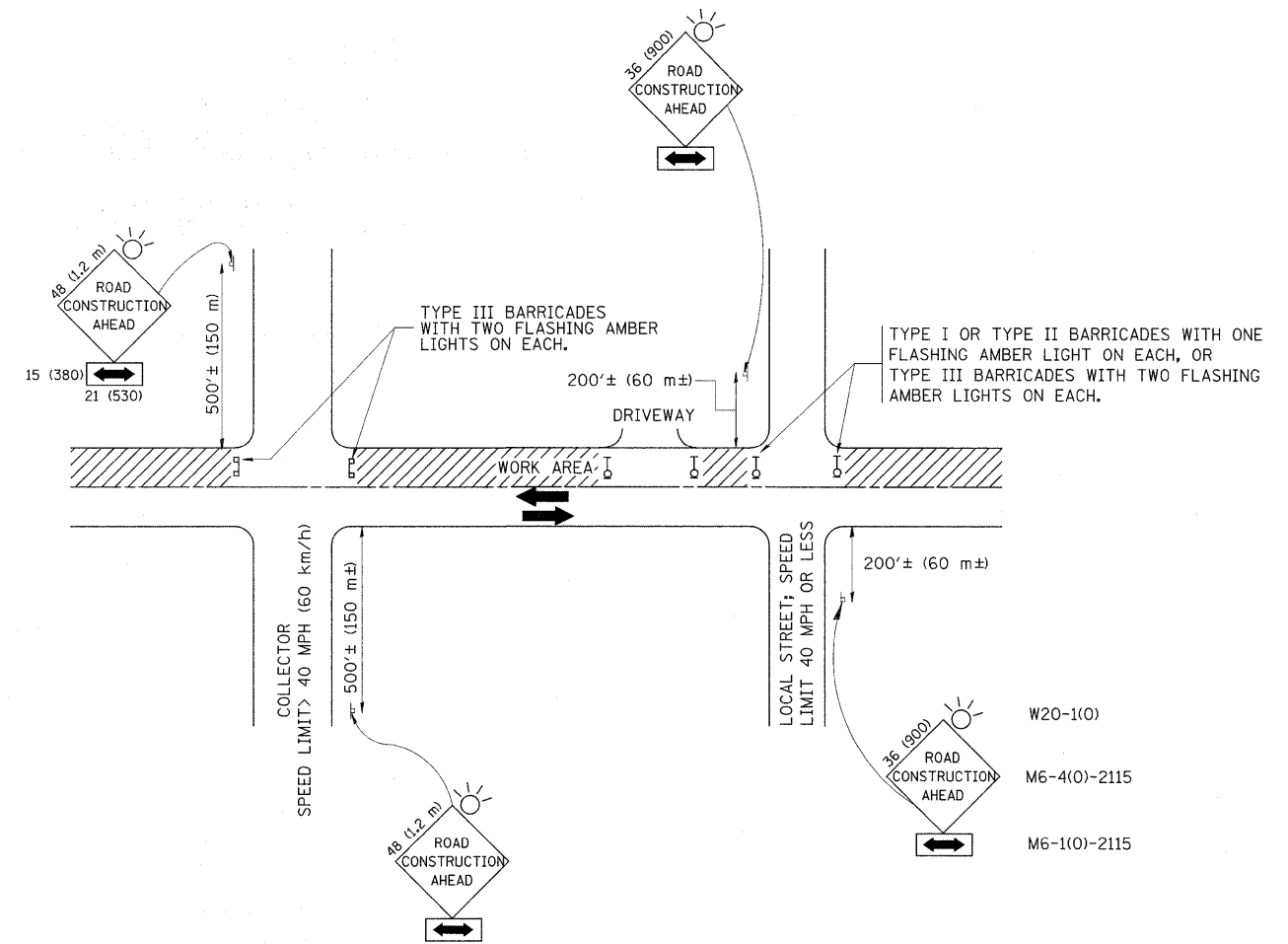
- A: MAINLINE ROADWAYS AND MAJOR SIDE ROADS.
 - B: MINOR SIDE ROADS.
 - C: THE TEMP. RAMP SHALL BE CONSTRUCTED IMMEDIATELY UPON REMOVAL OF THE EXISTING HMA SURFACE.
 - D: THE BUTT JOINT SHALL BE CONSTRUCTED IMMEDIATELY PRIOR TO PLACING THE PROPOSED HMA COURSES.
 - E: TAPER THE TEMP. RAMP AT A RATE OF 3'-0" (900 mm) PER 1 INCH (25 mm) OF MILLING THICKNESS.
 - F: INSTALLATION AND REMOVAL OF THE 4'-6" (1.35 m) TEMP. RAMP IS INCLUDED IN COST OF HMA SURFACE REMOVAL - BUTT JOINT
 - G: SEE ARTICLE 406.08 AND 406.14 OF THE STANDARD SPECIFICATIONS FOR "HMA AND/OR PCC SURFACE REMOVAL, BUTT JOINT".
- * SEE TYPICAL SECTIONS FOR MILLING THICKNESS.
- *** 20'-0" (6.1 m) PER 1 (25) RESURFACING (NOTE "A")
10'-0" (3.0 m) PER 1 (25) RESURFACING (NOTE "B")

BASIS OF PAYMENT:

THE BUTT JOINT WILL BE PAID FOR AT THE CONTRACT UNIT PRICE PER SQUARE YARD (SQUARE METER) FOR "HOT-MIX ASPHALT SURFACE REMOVAL - BUTT JOINT" OR FOR "PORTLAND CEMENT CONCRETE SURFACE REMOVAL - BUTT JOINT".

ALL DIMENSIONS ARE IN INCHES (MILLIMETERS) UNLESS OTHERWISE SHOWN.

FILE NAME =	USER NAME = whitatar	DESIGNED - M. DE YONG	REVISED - R. SHAH 10-25-94	STATE OF ILLINOIS DEPARTMENT OF TRANSPORTATION	BUTT JOINT AND HMA TAPER DETAILS		F.A.U. RTE.	SECTION	COUNTY	TOTAL SHEETS	SHEET NO.
ct:\pwwork\pwidot\WHITETAR\d0175521\d0175521.dwg	Std.dgn	DRAWN -	REVISED - A. ABBAS 03-21-97		1521	W-RS-5	KANE	16	10		
PLOT SCALE = 50.0000' / IN.	CHECKED -	REVISOR - M. GOMEZ 04-06-01	SCALE: NONE		SHEET NO. 1 OF 1 SHEETS	STA.	TO STA.	BD400-05 BD32		CONTRACT NO.	60J72
PLOT DATE = 2/2/2010	DATE - 06-13-90	REVISED - R. BORO 01-01-07					FED. ROAD DIST. NO. 1 ILLINOIS FED. AID PROJECT				



TRAFFIC CONTROL AND PROTECTION FOR SIDE ROADS, INTERSECTIONS, AND DRIVEWAYS

NOTES:

A. FOR NO LANE RESTRICTION ON THE SIDE ROAD OR DRIVEWAYS

1. SIDE ROAD WITH A SPEED LIMIT OF 40 MPH (60 km/h) OR LESS AS SHOWN ON THE DRAWING AND AS DIRECTED BY THE ENGINEER:

a) ONE ROAD CONSTRUCTION AHEAD SIGN 36 x 36 (900x900) WITH A FLASHER AND FLAG MOUNTED ON IT APPROXIMATELY 200' (60 m) IN ADVANCE OF THE MAIN ROUTE.

b) THE CLOSED PORTION OF THE MAIN ROUTE SHALL BE PROTECTED BY BLOCKING WITH TYPE I, TYPE II OR TYPE III BARRICADES, 1/3 OF THE CROSS SECTION OF THE CLOSED PORTION.

2. SIDE ROAD WITH A SPEED LIMIT GREATER THAN 40 MPH (60 km/h) AS SHOWN ON THE DRAWING AND AS DIRECTED BY THE ENGINEER:

a) ONE ROAD CONSTRUCTION AHEAD SIGN 48 x 48 (1.2 m x 1.2 m) WITH A FLASHER MOUNTED ON IT APPROXIMATELY 500' (150 m) IN ADVANCE OF THE MAIN ROUTE.

b) THE CLOSED PORTION OF THE MAIN ROUTE SHALL BE PROTECTED BY BLOCKING WITH TYPE III BARRICADES, 1/2 OF THE CROSS SECTION OF THE CLOSED PORTION.

3. WHEN THE SIDE ROAD LIES BETWEEN THE BEGINNING OF THE MAINLINE SIGNING AND THE WORK ZONE, A SINGLE HEADED ARROW (M6-1) SHALL BE USED IN LIEU OF THE DOUBLE HEADED ARROW (M6-4).

B. FOR A LANE CLOSURE ON A SIDE ROAD OR DRIVEWAY:

USE APPLICABLE PORTIONS OF THE TYPICAL APPLICATION OF TRAFFIC CONTROL DEVICES (STD. 701501, STD. 701606 OR THE APPROPRIATE STANDARD). THE SPACING OF SIGNS AND BARRICADES SHALL BE ADJUSTED FOR FIELD CONDITIONS AS DIRECTED BY THE ENGINEER. THE DIRECTIONAL ARROW SHALL BE COVERED OR REMOVED WHEN NO LONGER CONSISTENT WITH THE SIDE ROAD LANE CLOSURE.

C. ADVANCE WARNING SIGNS ARE TO BE OMITTED ON DRIVEWAY UNLESS OTHERWISE NOTED.

D. THE TRAFFIC CONTROL AND PROTECTION FOR SIDE ROADS, INTERSECTIONS, AND DRIVEWAYS SHALL BE INCIDENTAL TO THE COST OF SPECIFIED TRAFFIC CONTROL STANDARDS OR ITEMS.

All dimensions are in millimeters (inches) unless otherwise shown.

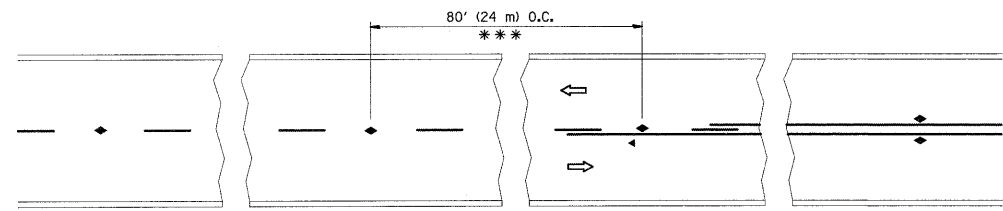
FILE NAME =	USER NAME = whstatar	DESIGNED - LHA	REVISED - J. OBERLE 10-18-95
ci\pw_work\PWIDOT\WHITETAR\0175521\Dis	Std.dgn	DRAWN -	REVISED - A. HOUSEH 03-06-96
	PLOT SCALE = 50.0000' / IN.	CHECKED -	REVISED - A. HOUSEH 10-15-96
	PLOT DATE = 2/2/2010	DATE - 06-89	REVISED - T. RAMMACHER 01-06-00

STATE OF ILLINOIS
DEPARTMENT OF TRANSPORTATION

TRAFFIC CONTROL AND PROTECTION FOR
SIDE ROADS, INTERSECTIONS, AND DRIVEWAYS

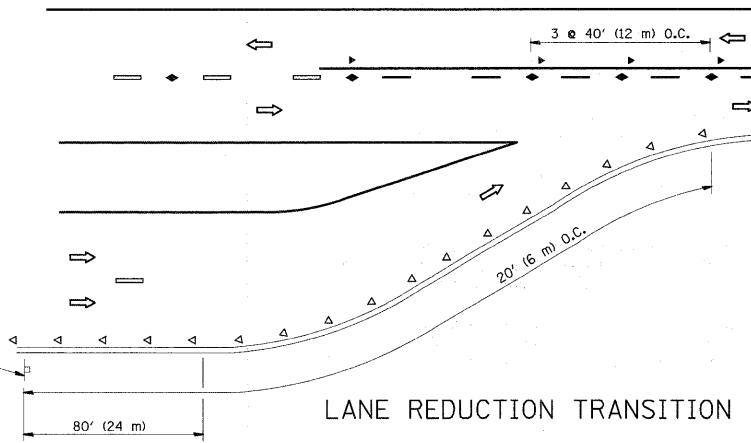
F.A.U. RTE.	SECTION	COUNTY	TOTAL SHEETS	SHEET NO.
1521	W-RS-5	KANE	16	11
TC-10			CONTRACT NO. 60J72	
FED. ROAD DIST. NO. 1 ILLINOIS FED. AID PROJECT				

SCALE: NONE SHEET NO. 1 OF 1 SHEETS STA. TO STA.

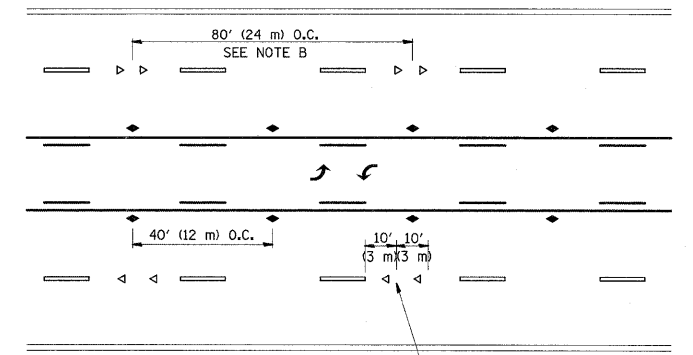


*** REDUCE TO 40' (12 m) O.C. ON CURVES WITH POSTED OR ADVISORY SPEED 45 M.P.H. (70 km/h) OR LESS.

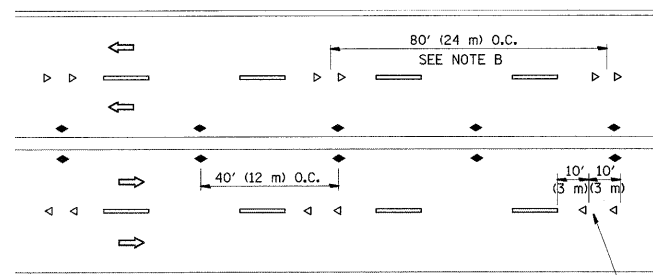
TWO-LANE/TWO-WAY



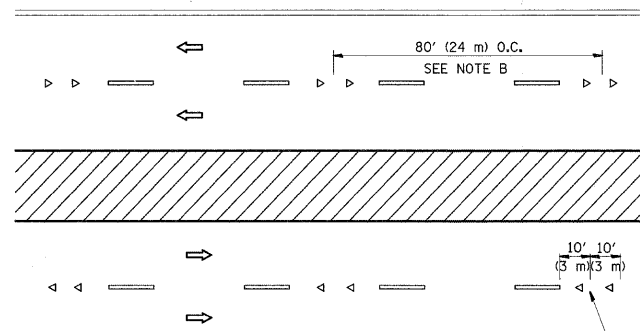
LANE REDUCTION TRANSITION



TWO-WAY LEFT TURN



MULTI-LANE/UNDIVIDED



MULTI-LANE/DIVIDED

GENERAL NOTES

1. MARKERS USED WITH DASHED LINES SHALL BE CENTERED IN THE GAP BETWEEN SEGMENTS.
2. MARKERS USED ADJACENT TO SOLID LINES SHALL BE OFFSET 2 TO 3 (50 TO 75) TOWARD TRAFFIC AS SHOWN.
3. MARKERS THROUGH TANGENTS LESS THAN 500' (150 m) IN LENGTH BETWEEN CURVES SHALL BE INSTALLED AT THE LESSER OF THE TWO CURVE SPACINGS.

SYMBOLS

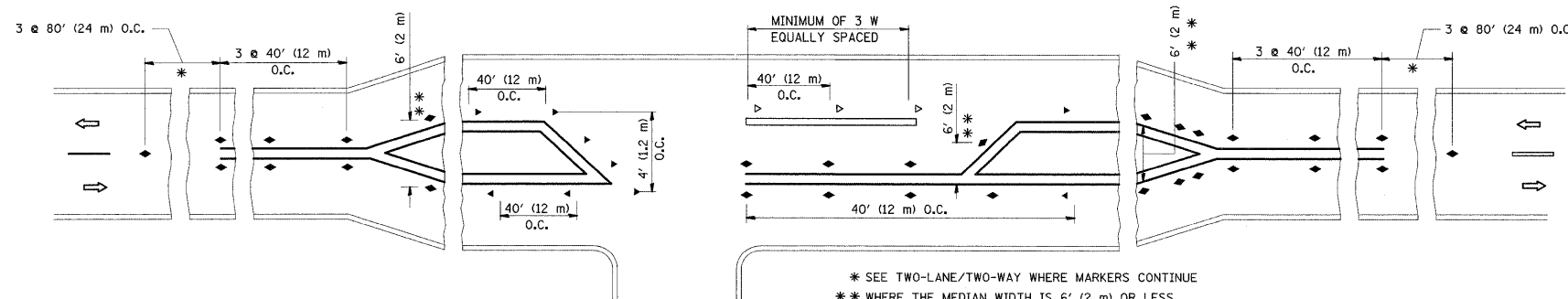
- YELLOW STRIPE
- WHITE STRIPE
- ◀ ONE-WAY AMBER MARKER
- ◀ ONE-WAY CRYSTAL MARKER (W/O)
- ◆ TWO-WAY AMBER MARKER

LANE MARKER NOTES

- A. USE DOUBLE LANE LINE MARKERS SPACED AS SHOWN.
- B. REDUCE TO 40' (12 m) O.C. ON CURVES WHERE ADVISORY SPEEDS ARE 10 M.P.H. (20 km/h) LOWER THAN POSTED SPEEDS.

DESIGN NOTES

1. DOUBLE LANE LINE MARKERS SHALL BE USED UNLESS SPECIFIED OTHERWISE.
2. EXCEPT AS SHOWN ON THE LANE REDUCTION TRANSITION AND FREEWAY EXIT RAMP DETAIL, MARKERS ARE NOT TO BE SPECIFIED ON RIGHT EDGE LINES.
3. THE EXACT MARKER LIMITS, SPACING, AND COLOR SHOULD BE INCLUDED IN THE PLANS.
4. MARKERS SHOULD NOT BE USED ALONGSIDE CURBS EXCEPT FOR EXTREMELY SHORT SECTIONS OF CURBS WHERE NOT MORE THAN TWO MARKERS WOULD BE INVOLVED.

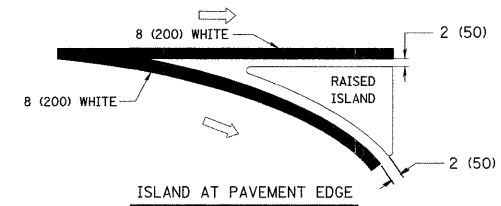
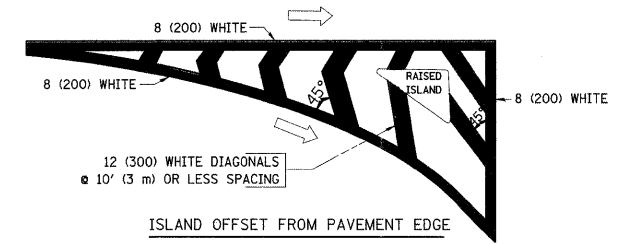
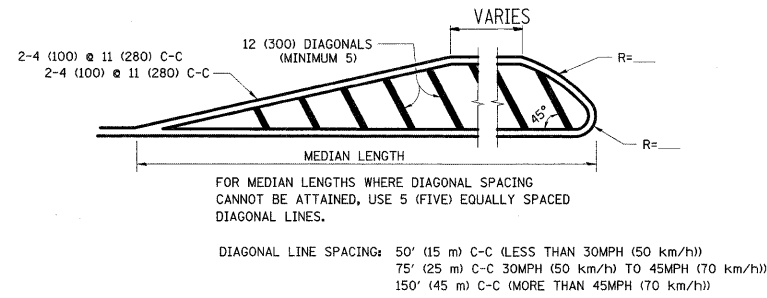
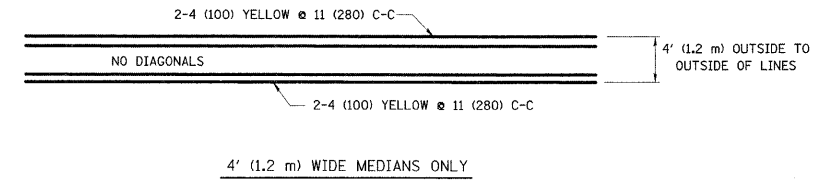
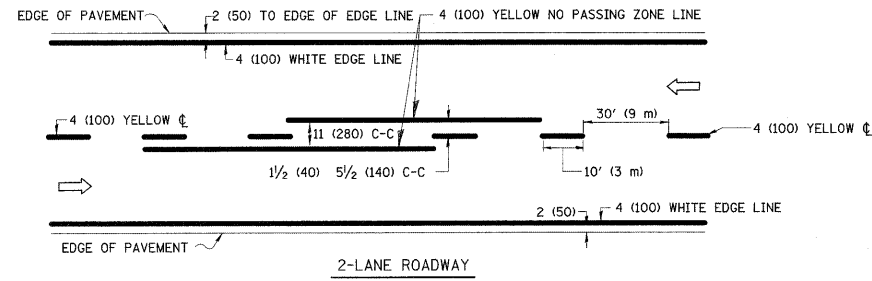


LEFT TURN

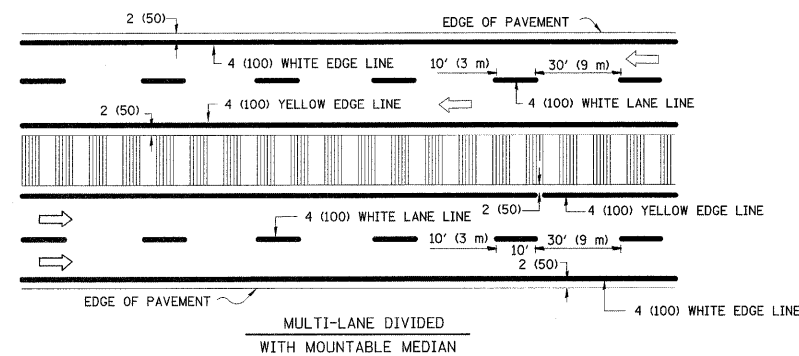
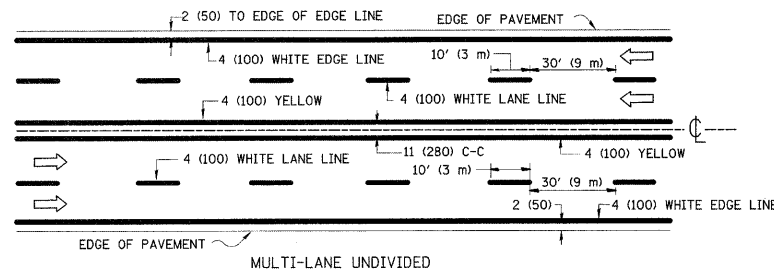
* SEE TWO-LANE/TWO-WAY WHERE MARKERS CONTINUE
 ** WHERE THE MEDIAN WIDTH IS 6' (2 m) OR LESS USE TWO-WAY MARKERS.

All dimensions are in inches (millimeters) unless otherwise shown.

FILE NAME = c:\pwwork\pwidot\WHITETAR\0175521\Dis	USER NAME = whitetar	DESIGNED -	REVISED - T. RAMMACHER 09-19-94	STATE OF ILLINOIS DEPARTMENT OF TRANSPORTATION	TYPICAL APPLICATIONS RAISED REFLECTIVE PAVEMENT MARKERS (SNOW-PLOW RESISTANT)			F.A.U. RTE.	SECTION	COUNTY	TOTAL SHEETS	SHEET NO.
	Std.dgn	DRAWN -	REVISED - T. RAMMACHER 03-12-99		1521	W-RS-5	KANE	16	12			
	PLOT SCALE = 50,0000' / IN.	CHECKED -	REVISED - T. RAMMACHER 01-06-00									
	PLOT DATE = 2/2/2010	DATE -	REVISED - C. JUCIUS 09-09-09		SCALE: NONE	SHEET NO. 1 OF 1 SHEETS	STA.	TO STA.	TC-11 CONTRACT NO. 60J72			
								FED. ROAD DIST. NO. 1 ILLINOIS FED. AID PROJECT				

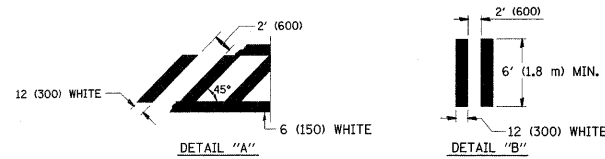
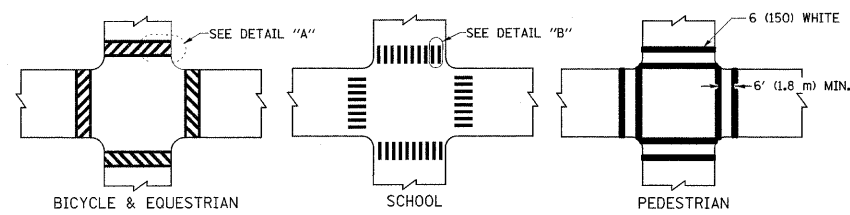


TYPICAL ISLAND MARKING

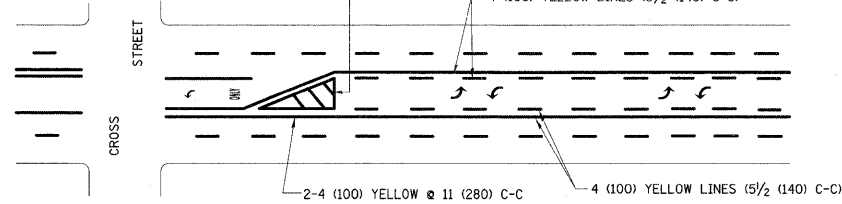


NOTE: MEDIANS WITH BARRIER CURB DO NOT REQUIRE AN EDGE LINE

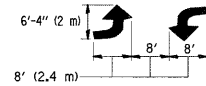
TYPICAL LANE AND EDGE LINE MARKING



TYPICAL CROSSWALK MARKING

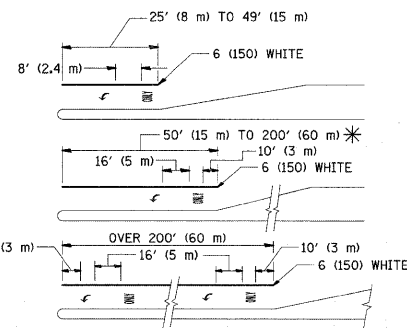


A MINIMUM OF TWO PAIRS OF TURN ARROWS SHALL BE USED, WHITE IN COLOR. ADDITIONAL PAIRS SHALL BE PLACED AT 200' (60 m) TO 300' (90 m) INTERVALS.



MEDIAN WITH TWO-WAY LEFT TURN LANE

TYPICAL PAINTED MEDIAN MARKING



FULL SIZE LETTERS 8' (2.4 m) AND ARROWS SHALL BE USED.
* AREA = 15.6 SQ. FT. (1.5 m²) ONLY AREA = 20.8 SQ. FT. (1.9 m²)

* TURN LANES IN EXCESS OF 400' (120 m) IN LENGTH MAY HAVE AN ADDITIONAL SET OF ARROW - "ONLY" INSTALLED MIDWAY BETWEEN THE OTHER TWO SETS OF ARROW - "ONLY".

TYPICAL LEFT (OR RIGHT) TURN LANE

TYPICAL TURN LANE MARKING

TYPE OF MARKING	WIDTH OF LINE	PATTERN	COLOR	SPACING / REMARKS
CENTERLINE ON 2 LANE PAVEMENT	4 (100)	SKIP-DASH	YELLOW	10' (3 m) LINE WITH 30' (9 m) SPACE
CENTERLINE ON MULTI-LANE UNDIVIDED PAVEMENT	2 @ 4 (100)	SOLID	YELLOW	11 (280) C-C
NO PASSING ZONE LINES: FOR ONE DIRECTION	4 (100)	SOLID	YELLOW	5 1/2 (140) C-C FROM SKIP-DASH CENTERLINE
NO PASSING ZONE LINES: FOR BOTH DIRECTIONS	2 @ 4 (100)	SOLID	YELLOW	11 (280) C-C OMIT SKIP-DASH CENTERLINE BETWEEN
LANE LINES	4 (100) 5 (125) ON FREEWAYS	SKIP-DASH SKIP-DASH	WHITE WHITE	10' (3 m) LINE WITH 30' (9 m) SPACE
DOTTED LINES (EXTENSIONS OF CENTER, LANE OR TURN LANE MARKINGS)	SAME AS LINE BEING EXTENDED	SKIP-DASH	SAME AS LINE BEING EXTENDED	2' (600) LINE WITH 6' (1.8 m) SPACE
EDGE LINES	4 (100)	SOLID	YELLOW-LEFT WHITE-RIGHT	OUTLINE MOUNTABLE MEDIANS IN YELLOW; EDGE LINES ARE NOT USED NEXT TO BARRIER CURB
TURN LANE MARKINGS	6 (150) LINES; FULL SIZE LETTERS & SYMBOLS (8' (2.4m))	SOLID	WHITE	SEE TYPICAL TURN LANE MARKING DETAIL
TWO WAY LEFT TURN MARKING	2 @ 4 (100) EACH DIRECTION	SKIP-DASH AND SOLID	YELLOW	10' (3 m) LINE WITH 30' (9 m) SPACE FOR SKIP-DASH; 5 1/2 (140) C-C BETWEEN SOLID LINE AND SKIP-DASH LINE
	8' (2.4m) LEFT ARROW	IN PAIRS	WHITE	SEE TYPICAL TWO-WAY LEFT TURN MARKING DETAIL
CROSSWALK LINES (PEDESTRIAN) A. DIAGONALS (BIKE & EQUESTRIAN) B. LONGITUDINAL BARS (SCHOOL)	2 @ 6 (150) 12 (300) @ 45° 12 (300) @ 90°	SOLID SOLID SOLID	WHITE WHITE WHITE	NOT LESS THAN 6' (1.8 m) APART 2' (600) APART 2' (600) APART SEE TYPICAL CROSSWALK MARKING DETAILS.
STOP LINES	24 (600)	SOLID	WHITE	PLACE 4' (1.2 m) IN ADVANCE OF AND PARALLEL TO CROSSWALK, IF PRESENT. OTHERWISE, PLACE AT DESIRED STOPPING POINT. PARALLEL TO CROSSROAD CENTERLINE, WHERE POSSIBLE
PAINTED MEDIANS	2 @ 4 (100) WITH 12 (300) DIAGONALS @ 45° NO DIAGONALS USED FOR 4' (1.2 m) WIDE MEDIANS	SOLID	YELLOW; TWO WAY TRAFFIC WHITE; ONE WAY TRAFFIC	11 (280) C-C FOR THE DOUBLE LANE SEE TYPICAL PAINTED MEDIAN MARKING.
GORE MARKING AND CHANNELIZING LINES	8 (200) WITH 12 (300) DIAGONALS @ 45°	SOLID	WHITE	DIAGONALS: 15' (4.5 m) C-C (LESS THAN 30MPH (50 km/h)) 20' (6 m) C-C 30MPH (50 km/h) TO 45MPH (70 km/h) 30' (9 m) C-C (OVER 45MPH (70 km/h))
RAILROAD CROSSING	24 (600) TRANSVERSE LINES; "RR" IS 6' (1.8 m) LETTERS; 16 (400) LINE FOR "X"	SOLID	WHITE	SEE STATE STANDARD 780001 AREA OF: "R"=3.6 SQ. FT. (0.33 m ²) EACH "X"=54.0 SQ. FT. (5.0 m ²)
SHOULDER DIAGONALS	12 (300) @ 45°	SOLID	WHITE - RIGHT YELLOW - LEFT	50' (15 m) C-C (LESS THAN 30MPH (50 km/h)) 75' (25 m) C-C (30 MPH (50 km/h) TO 45MPH (70 km/h)) 150' (45 m) C-C (OVER 45MPH (70 km/h))

FOR FURTHER DETAILS ON PAVEMENT MARKING REFER TO STANDARD SPECIFICATIONS FOR ROAD AND BRIDGE CONSTRUCTION AND STATE STANDARD 780001.

All dimensions are in inches (millimeters) unless otherwise shown.

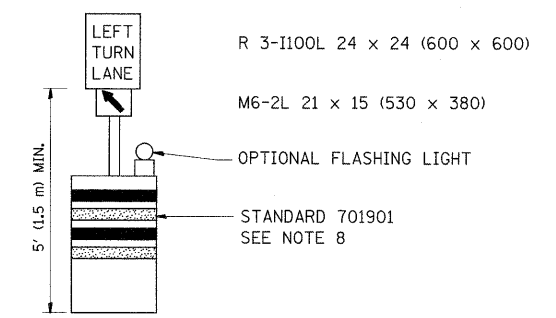
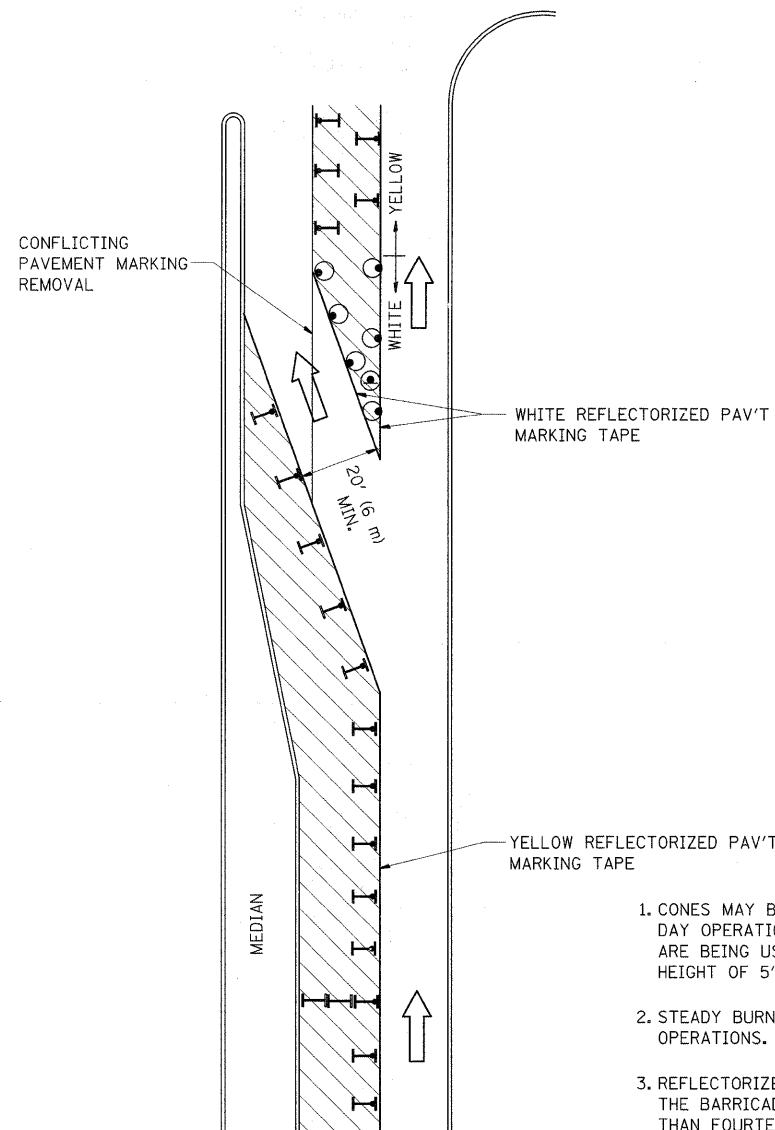
FILE NAME =	USER NAME = whtetar	DESIGNED - EVERS	REVISED - T. RAMMACHER 10-27-94
ct:\work\XPWIDOT\WHITETAR\d0175521\Dis	Std.dgn	DRAWN -	REVISED - C. JUCIUS 09-09-09
	PLOT SCALE = 50.0000" / IN.	CHECKED -	REVISED -
	PLOT DATE = 2/2/2010	DATE - 03-19-90	REVISED -

STATE OF ILLINOIS
DEPARTMENT OF TRANSPORTATION

DISTRICT ONE
TYPICAL PAVEMENT MARKINGS

SCALE: NONE SHEET NO. 1 OF 1 SHEETS STA. TO STA.

F.A.U. RTE.	SECTION	COUNTY	TOTAL SHEETS	SHEET NO.
1521	W-RS-5	KANE	16	13
TC-13		CONTRACT NO.	60J72	
FED. ROAD DIST. NO. 1 (ILLINOIS) FED. AID PROJECT				


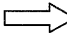



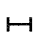


GENERAL NOTES

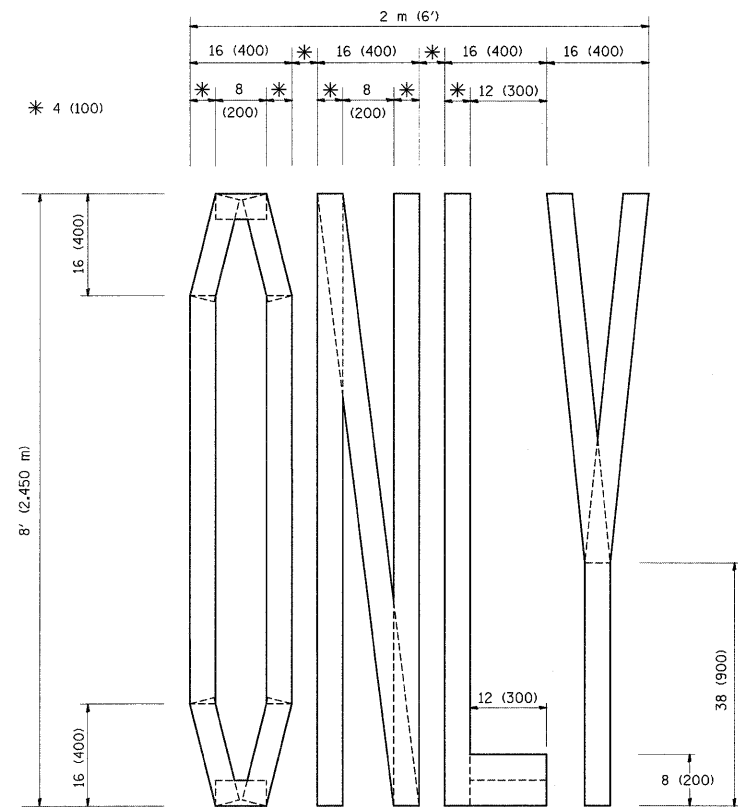
1. CONES MAY BE SUBSTITUTED FOR BARRICADES OR DRUMS AT HALF THE SPACING DURING DAY OPERATIONS. CONES SHALL BE A MINIMUM OF 28 (710) IN HEIGHT. WHEN CONES ARE BEING USED, THE "LEFT TURN LANE" SIGN MAY BE SKID MOUNTED AT A MINIMUM HEIGHT OF 5' (1.5 m).
2. STEADY BURNING LIGHTS WILL NOT BE REQUIRED ON BARRICADES OR DRUMS FOR DAY OPERATIONS. ALL LIGHTS SHALL BE MONODIRECTIONAL.
3. REFLECTORIZED TEMPORARY PAVEMENT MARKING TAPE SHALL BE PLACED THROUGHOUT THE BARRICADED AREA OF EACH TURN BAY WHERE THE CLOSURE TIME IS GREATER THAN FOURTEEN DAYS.
4. THIS APPLICATION ALSO APPLIES WHEN WORK IS BEING PERFORMED IN THE RIGHT LANE(S) AND THE RIGHT TURN BAY IS TO REMAIN OPEN. UNDER THIS CONDITION, "RIGHT TURN LANE" R3-100 24 x 24 (600 x 600) AND M6-2R 21 x 15 (530 x 380) SHALL BE USED.
5. THESE CONTROLS SHALL SUPPLEMENT MAINLINE TRAFFIC CONTROL FOR LANE CLOSURES.
6. LONGITUDINAL DIMENSIONS MAY BE ADJUSTED TO FIT FIELD CONDITIONS.
7. FORM OPER 725 IS REQUIRED.
8. IF A DRUM OR TYPE II BARRICADE WITH AN ATTACHED SIGN PANEL WHICH MEETS NCHRP 350 REQUIREMENTS IS NOT AVAILABLE, THE SIGNS SHALL BE MOUNTED, ABOVE THE BARRICADES, ON SEPARATE SIGNS SUPPORTS THAT MEET NCHR 350 REQUIREMENTS.
9. TRAFFIC CONTROL AND PROTECTION AT TURN BAYS (TO REMAIN OPEN TO TRAFFIC) SHALL BE INCLUDED IN THE COST SPECIFIED TRAFFIC CONTROL STANDARDS OR ITEMS.

All dimensions are in inches (millimeters) unless otherwise shown.

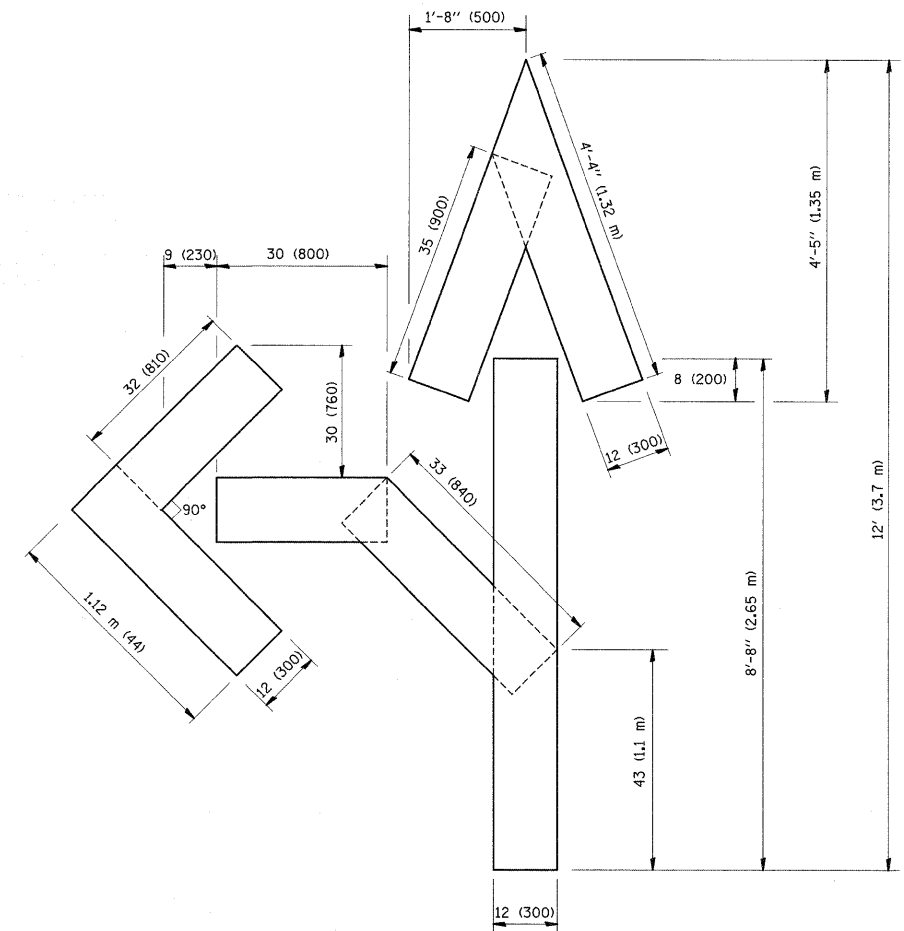
LEGEND

-  WORK AREA
-  LANE OPEN TO TRAFFIC
-  TYPE I OR II BARRICADE WITH STEADY BURN LIGHT
-  DRUM WITH STEADY BURN LIGHT
-  DRUM WITH SIGN (WITH OPTIONAL FLASHING LIGHT) SEE DETAIL
-  TYPE I OR II CHECK BARRICADE WITH FLASHING LIGHT

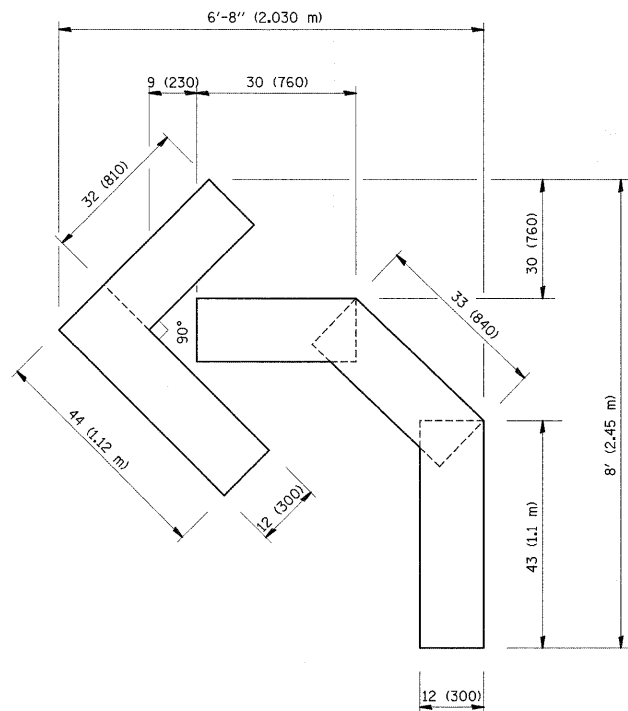
FILE NAME =	USER NAME = whitetar	REVISED - T. RAMMACHER 09-08-94	REVISED - R. BORO 09-14-09	STATE OF ILLINOIS DEPARTMENT OF TRANSPORTATION	TRAFFIC CONTROL AND PROTECTION AT TURN BAYS (TO REMAIN OPEN TO TRAFFIC)			F.A.U. RTE.	SECTION	COUNTY	TOTAL SHEETS	SHEET NO.
ci:\pw_work\PWIDOT\WHITETAR\d0175521\Dis	Std.dgn	REVISED - A. HOUSEH 11-07-95	REVISED -		SCALE: NONE	SHEET NO. 1 OF 1 SHEETS	STA.	1521	W-RS-5	KANE	16	14
	PLOT SCALE = 5/8" = 1' IN.	REVISED - A. HOUSEH 10-12-96	REVISED -					TC-14			CONTRACT NO.	60J72
	PLOT DATE = 2/2/2010	REVISED - T. RAMMACHER 01-06-00	REVISED -					FED. ROAD DIST. NO. 1 ILLINOIS FED. AID PROJECT				



QUANTITY
 4 (100) LINE = 64.1 ft. (19.7 m)
 21.1 sq. ft. (1.97 sq. m)



QUANTITY
 4 (100) LINE = 82.5 ft. (25.3 m)
 27.5 sq. ft. (2.53 sq. m)



QUANTITY
 4 (100) LINE = 45.5 ft. (13.9 m)
 15.2 sq. ft. (1.39 sq. m)

All dimensions are in inches (millimeters) unless otherwise shown.

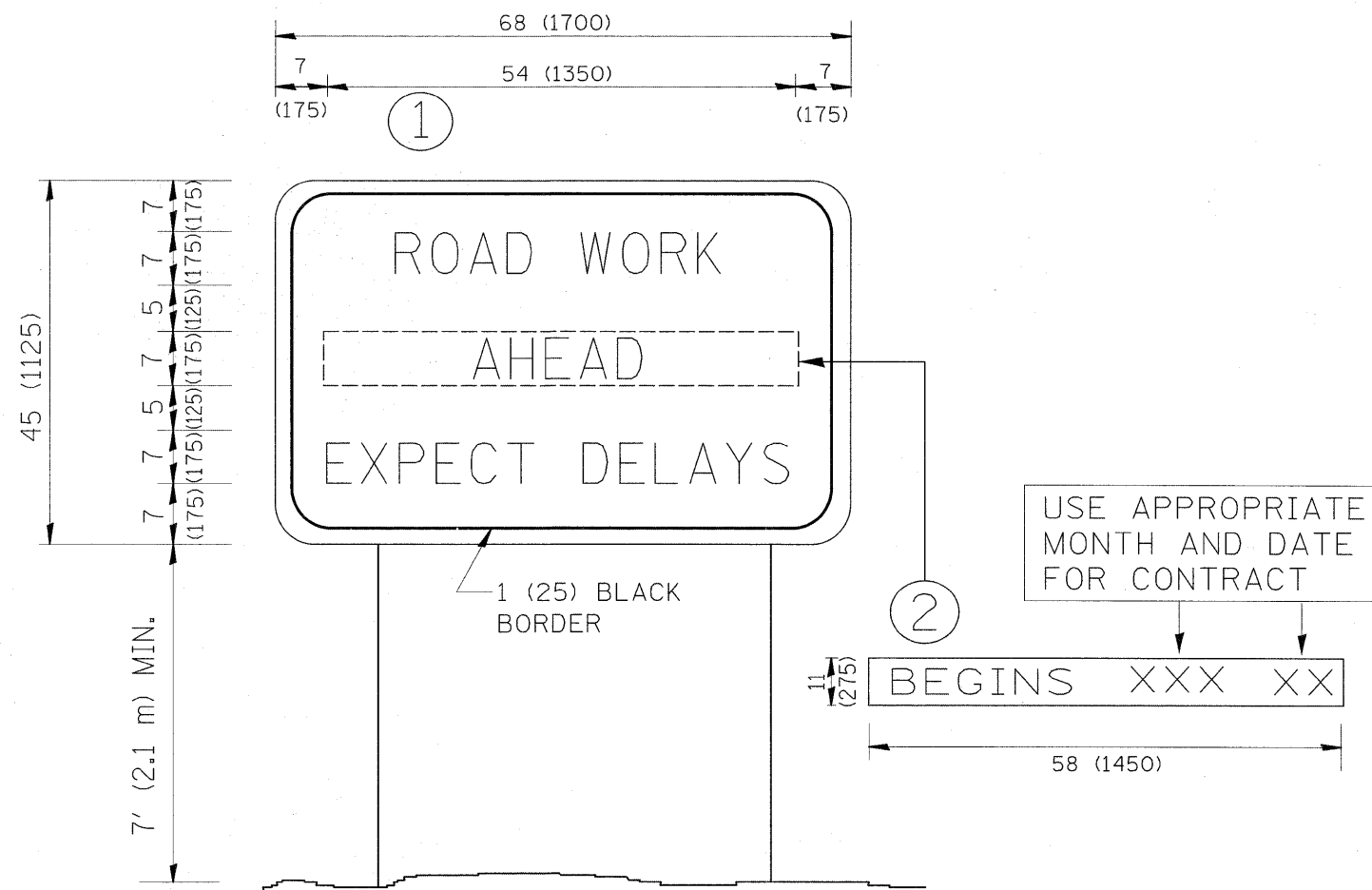
FILE NAME =	USER NAME = whistler	DESIGNED -	REVISED - T. RAMMACHER 06-05-96
er:\paw_work\pwidot\wh;tetar\d0175521\d	Std.dgn	DRAWN -	REVISED - T. RAMMACHER 11-04-97
	PLOT SCALE = 50.0000' / IN.	CHECKED -	REVISED - T. RAMMACHER 03-02-98
	PLOT DATE = 2/2/2010	DATE - 09-18-94	REVISED - E. GOMEZ 08-28-00

STATE OF ILLINOIS
 DEPARTMENT OF TRANSPORTATION

PAVEMENT MARKING LETTERS AND SYMBOLS
 FOR TRAFFIC STAGING

SCALE: NONE SHEET NO. 1 OF 1 SHEETS STA. TO STA.

F.A.J. RTE.	SECTION	COUNTY	TOTAL SHEETS	SHEET NO.
1521	W-RS-5	KANE	16	15
TC-16			CONTRACT NO. 60J72	
FED. ROAD DIST. NO. 1 ILLINOIS FED. AID PROJECT				



NOTES:

1. USE BLACK LETTERING ON ORANGE BACKGROUND.
2. ERECT SIGNS IN ADVANCE OF THE LOCATION FOR THE "ROAD CONSTRUCTION AHEAD" SIGN AT LOCATIONS AS DIRECTED BY THE ENGINEER.
3. ERECT SIGN ① WITH INSTALLED PANEL ② ONE WEEK PRIOR TO THE START OF CONSTRUCTION.
4. REMOVE PANEL ② SOON AFTER THE START OF CONSTRUCTION.
5. SEE SPECIAL PROVISION FOR "TEMPORARY INFORMATION SIGNING" FOR ADDITIONAL INFORMATION.
6. ONE SIGN ASSEMBLY EQUALS 25.70 SQ. FT. (2.3 SQ. M.)
7. SHALL BE PAID FOR AS TEMPORARY INFORMATION SIGNING.

ALL DIMENSIONS ARE IN INCHES (MILLIMETERS) UNLESS OTHERWISE SHOWN.

FILE NAME =	USER NAME = whtetar	DESIGNED -	REVISED - R. MIRS 09-15-97
es:\pw\work\pwrtdot\whitetar\d0175521\Dist\d.dgn		DRAWN -	REVISED - R. MIRS 12-11-97
PLOT SCALE = 50.0000" / IN.		CHECKED -	REVISED - T. RAMMACHER 02-02-99
PLOT DATE = 2/2/2010		DATE -	REVISED - C. JUCIUS 01-31-07

**STATE OF ILLINOIS
DEPARTMENT OF TRANSPORTATION**

**ARTERIAL ROAD
INFORMATION SIGN**

SCALE: NONE SHEET NO. 1 OF 1 SHEETS STA. TO STA.

F.A.R.T.E.	SECTION	COUNTY	TOTAL SHEETS	SHEET NO.
1521	W-RS-5	KANE	16	16
TC-22			CONTRACT NO. 60J72	
<small>FED. ROAD DIST. NO. 1 ILLINOIS FED. AID PROJECT</small>				