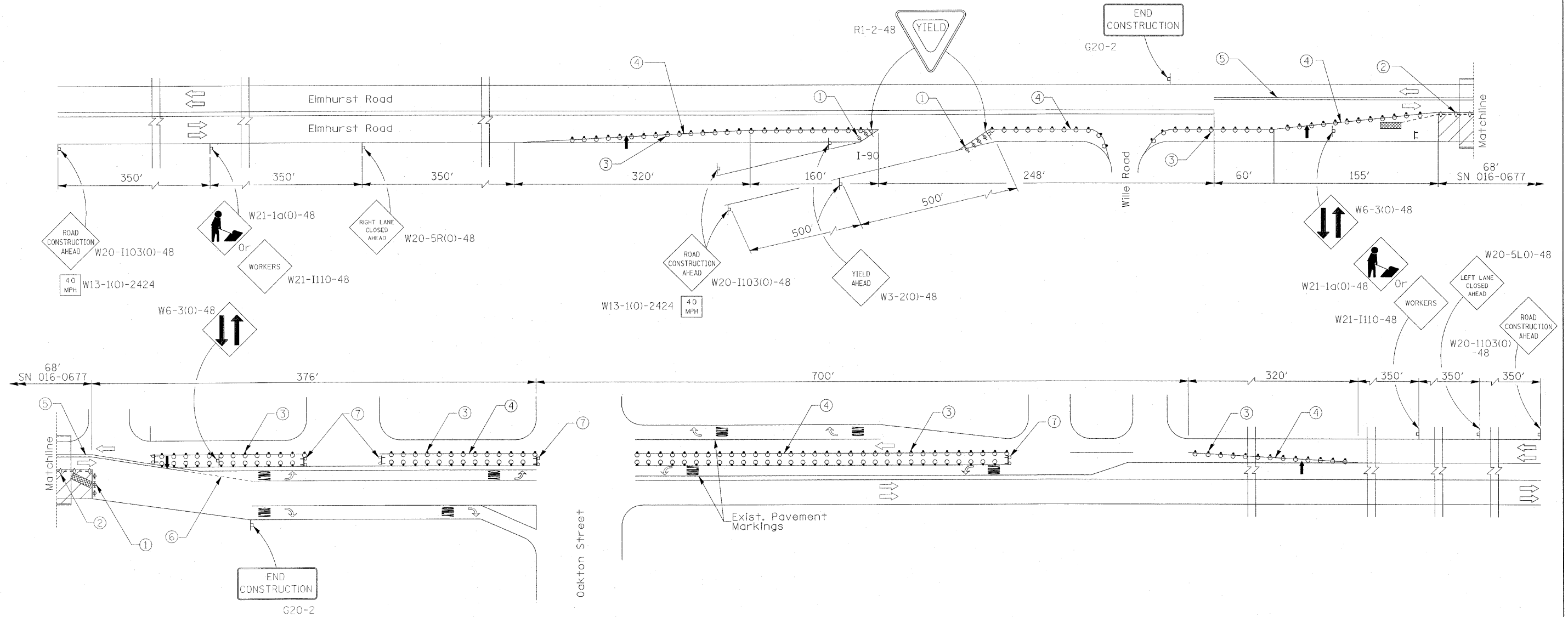


STATE OF ILLINOIS  
DEPARTMENT OF TRANSPORTATION



SYMBOLS

- |  |                    |  |                                                      |
|--|--------------------|--|------------------------------------------------------|
|  | Work area          |  | Drum with steady burning light                       |
|  | Sign               |  | Temporary concrete barrier                           |
|  | Type III barricade |  | Crystal, bidirectional barrier wall/guardrail marker |
|  | Impact attenuator  |  | Barricade or drum with flashing light                |
|  | Arrow board        |  |                                                      |

- ① Type II barricades or drums with steady burning monodirectional light
- ② Barrier wall/guardrail markers at 25' cts. See Standards 704001 & 635011.
- ③ Drums at 6' centers
- ④ Temporary pavement marking, 4" wide solid white
- ⑤ Temporary pavement marking, 4" wide double yellow at 8 inches C-C
- ⑥ Temporary pavement marking, 6" wide dashed white (2' line, 6' space)
- ⑦ Type I or Type II barricades, per Standard 701606

NOTES:

MAINTENANCE OF TRAFFIC DEVICES TO BE INSTALLED IN ACCORDANCE WITH APPLICABLE PORTIONS OF STANDARDS 701321, 701411, AND 701606 AND DISTRICT ONE STANDARDS TC-11 AND TC-13. ADDITIONAL SIGNAGE MAY BE REQUIRED BY THE RESIDENT ENGINEER. THIS WORK AND SIGNAGE IS INCLUDED IN THE PAYITEM FOR TRAFFIC CONTROL AND PROTECTION, (SPECIAL).

EXISTING, CONFLICTING PAVEMENT MARKINGS SHALL BE REMOVED. THIS WORK SHALL BE PAID FOR AS PAVEMENT MARKING REMOVAL.

REMOVAL OF THE TEMPORARY PAVEMENT MARKINGS SHALL BE PAID FOR UNDER THE PAY ITEM WORK ZONE PAVEMENT MARKING REMOVAL.

THE EXISTING PAVEMENT MARKINGS THAT HAVE BEEN REMOVED SHALL BE REPLACED IN-KIND. POLYUREA PAVEMENT MARKING, TYPE I WILL BE PLACED ON CONCRETE SURFACES. THERMOPLASTIC PAVEMENT MARKINGS WILL BE PLACED ON HMA SURFACES.

FILE NAME = 0160J70-sht-staging.dgn	USER NAME = IDDT(eng)	DESIGNED - A. Selber	REVISED -	<b>STATE OF ILLINOIS DEPARTMENT OF TRANSPORTATION</b>	<b>STAGE I CONSTRUCTION - MAINTENANCE OF TRAFFIC FAU 2678 / ELMHURST ROAD OVER HIGGINS CREEK</b>	F.A.U. RTE. 2678	SECTION 3025-1-1	COUNTY COOK	TOTAL SHEETS 10	SHEET NO. 3
	PLOT SCALE =	DRAWN - A. Selber	REVISED -			SCALE:	SHEET NO. 1 OF 2 SHEETS	STA. TO STA.	CONTRACT NO. 60J70 [ILLINOIS] FED. AID PROJECT	
PLOT DATE = February 1, 2010	CHECKED - J. Homelka	DATE - JANUARY, 2010	REVISED -							