

F.A.P. RTE.	SECTION	COUNTY	TOTAL SHEETS	SHEET NO.
365	59 RS-3	DUPAGE	20	1
FED. ROAD DIST. NO. 1		ILLINOIS	CONTRACT NO. 60J49	

STATE OF ILLINOIS
DEPARTMENT OF TRANSPORTATION
DIVISION OF HIGHWAYS

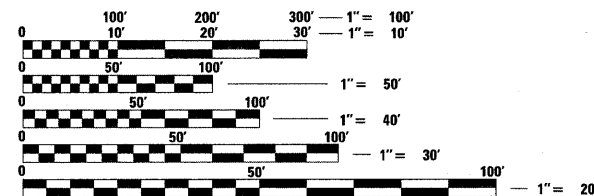
**PROPOSED
HIGHWAY PLANS**

F.A.P. ROUTE 365: BUTTERFIELD ROAD (IL RTE 56)
KANE COUNTY LINE TO IL RTE 59 (JOLIET RD)
SECTION: 59 RS-3
PROJECT NO: _____
RESURFACING (3P)
DUPAGE COUNTY
C-91-239-10

FOR INDEX OF SHEETS, SEE SHEET NO. 2

IMPROVEMENT LOCATED IN
WINFIELD TOWNSHIP

2007 ADT = 20,000 VEHICLES PER DAY
SPEED LIMIT = 50-55 MPH

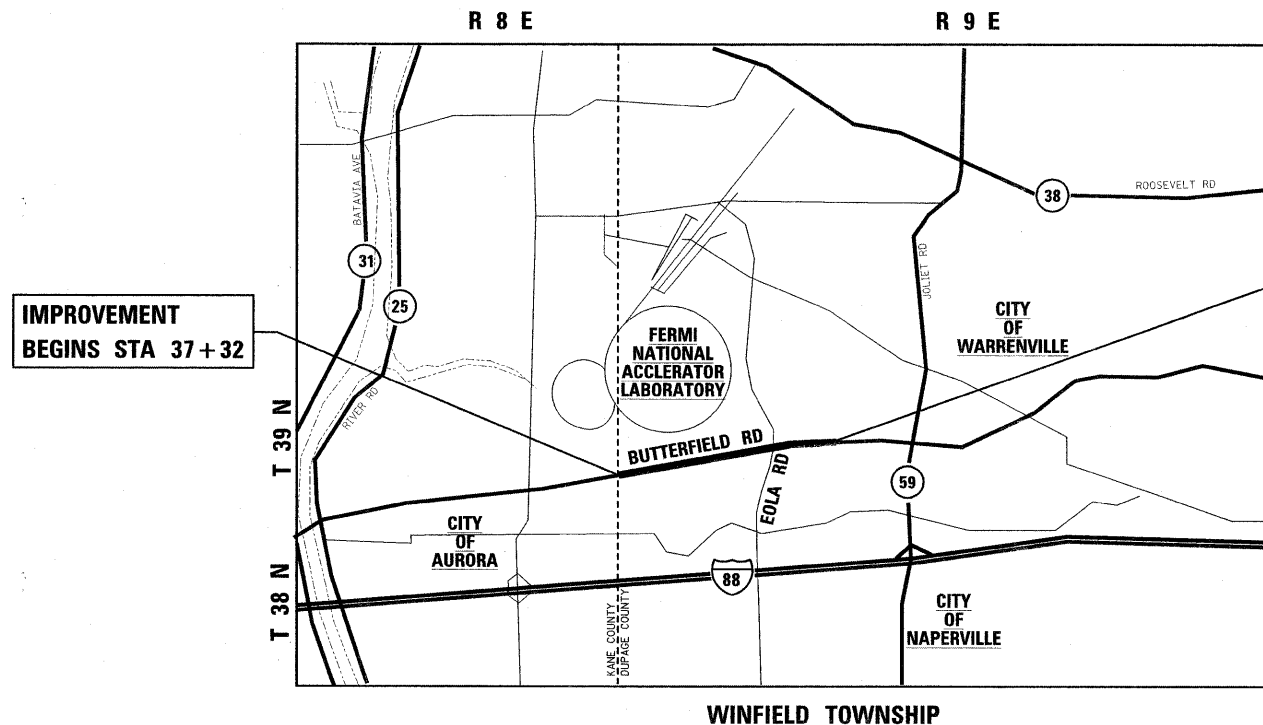


FULL SIZE PLANS HAVE BEEN PREPARED USING STANDARD ENGINEERING SCALES. REDUCED SIZED PLANS WILL NOT CONFORM TO STANDARD SCALES. IN MAKING MEASUREMENTS ON REDUCED PLANS, THE ABOVE SCALES MAY BE USED.

J.U.L.I.E.
JOINT UTILITY LOCATION INFORMATION FOR EXCAVATION
1-800-892-0123
OR 811

PROJECT ENGINEER: MICHELLE AQUINO (847) 705-4606
PROJECT MANAGER: RAJENDRA SHAH (847) 705-4555

CONTRACT NO. 60J49



IMPROVEMENT
BEGINS STA 37+32

IMPROVEMENT
ENDS STA 154+50

WINFIELD TOWNSHIP
LOCATION MAP
NOT TO SCALE

GROSS & NET LENGTH OF PROJECT = 11,718 FT = 2.22 MILES

MARK A. KAZICH
39279
REGISTERED
PROFESSIONAL
ENGINEER
OF
ILLINOIS
Exp. 11/30/11

D-91-239-10



LOCATION OF SECTION INDICATED THIS: - [rectangle] -

STATE OF ILLINOIS
DEPARTMENT OF TRANSPORTATION
DIVISION OF HIGHWAYS
SUBMITTED MARCH 18, 2010
Diana M. O'Keefe
DEPUTY DIRECTOR OF HIGHWAYS, REGION ENGINEER
April 9, 2010
Scott E. Stett, P.E.
Acting ENGINEER OF DESIGN AND ENVIRONMENT
April 9, 2010
Christina M. Reed
DIRECTOR OF HIGHWAYS, CHIEF ENGINEER

rjngroup
Excellence through Ownership
200 West Front Street
Wheaton, IL 60187

PRINTED BY THE AUTHORITY
OF THE STATE OF ILLINOIS

GENERAL NOTES

1. BEFORE STARTING ANY EXCAVATION, THE CONTRACTOR SHALL CALL *J.U.L.I.E.* AT (800)892-0123 FOR FIELD LOCATIONS OF BURIED ELECTRIC, TELEPHONE AND GAS UTILITIES. (48 HOUR NOTIFICATION IS REQUIRED.)
2. ALL PAVEMENT MARKING SHALL BE PLACED THROUGHOUT THE PROJECT ACCORDING TO DISTRICT 1 TYPICAL PAVEMENT MARKING.
3. ALL HMA PAVEMENT PATCHING SHALL BE CLASS D.
4. THE CONTRACTOR WILL NOT BE ALLOWED TO SET UP A YARD OR FIELD OFFICE ON STATE PROPERTY WITHOUT WRITTEN PERMISSION FROM THE DEPARTMENT.
5. ANY PAVEMENT MARKINGS AND RAISED REFLECTIVE PAVEMENT MARKERS OBLITERATED BY MILLING AND RESURFACING OPERATIONS ON SIDE STREETS AND ENTRANCES SHALL BE REPLACED AND PAID FOR IN KIND.
6. ALL DAMAGE TO EXISTING PAVEMENT MARKINGS OR RAISED REFLECTIVE PAVEMENT MARKERS OUTSIDE THE REMOVAL LINE SHOWN ON THE PLANS SHALL BE REPLACED AT NO ADDITIONAL COST TO THE DEPARTMENT.
7. BEFORE BEGINNING ANY WORK, THE CONTRACTOR SHALL RETAIN AND RECORD (FOR FUTURE REFERENCES), ALL EXISTING PAVEMENT MARKING LINES IN ORDER THAT THESE LOCATIONS CAN BE RE-ESTABLISHED FOR STRIPING. EXACT LOCATIONS OF ALL STRIPING SHALL BE AS DIRECTED BY THE ENGINEER.
8. ALL PAVEMENT PATCHING LOCATIONS WILL BE DETERMINED IN THE FIELD BY THE ENGINEER.
9. DRAINAGE ADJUSTMENT, CLEANING OR RECONSTRUCTION LOCATIONS WILL BE DETERMINED IN THE FIELD BY THE ENGINEER.
10. FRAMES AND GRATES ADJUSTMENT OF PRIVATE UTILITIES WITHIN THE LIMITS OF THE IMPROVEMENTS SHALL BE DONE BY THEIR RESPECTIVE OWNERS AND ARE NOT PART OF THIS CONTRACT.
11. THE RESIDENT ENGINEER SHALL CONTACT THE DISTRICT ONE TRAFFIC CONTROL SUPERVISOR AT (847) 705-4470 A MINIMUM OF 72 HOURS PRIOR TO THE PLACEMENT OF ANY TEMPORARY TRAFFIC CONTROL DEVICES.
12. THE ENGINEER SHALL CONTACT MR. DON CHIARUGI, THE TRAFFIC FIELD ENGINEER, @ 847-741-9857 TWO (2) WEEKS PRIOR TO THE START OF THIS PROJECT SO THAT EXACT STATIONING OF NO PASSING ZONES AND OTHER PERMANENT PAVEMENT MARKINGS MAY BE ESTABLISHED.
13. THE CONTRACTOR SHALL BE REQUIRED TO PROVIDE ACCESS TO ABUTTING PROPERTY AT ALL TIMES DURING THE CONSTRUCTION OF THIS PROJECT.
14. EXISTING BROKEN FRAMES AND LIDS SHALL BE REMOVED AND DISPOSED OF BY THE CONTRACTOR AND SHALL BE REPLACED AS DIRECTED BY THE ENGINEER. REPLACEMENT FRAMES AND LIDS WILL BE PAID FOR IN ACCORDANCE WITH ARTICLE 109.04 OF THE STANDARD SPECIFICATIONS UNLESS A SEPARATE PAY ITEM HAS BEEN PROVIDED.
15. DO NOT SCALE PLANS FOR CONSTRUCTION DIMENSIONS.
16. DOUBLE LANE MARKERS ARE TO BE USED AS SHOWN ON THE DISTRICT ONE DETAIL FOR TYPICAL APPLICATION OF RAISED REFLECTIVE PAVEMENT MARKERS (SNOW-PLow RESISTANT) SHOWN IN THE PLANS.
17. WHEN ARTIFICIAL LIGHTING IS USED IN NIGHT OPERATIONS THE CONTRACTOR SHALL EXERCISE THE UTMOST PRECAUTIONS IN PREVENTING ADVERSE VISIBILITY TO THE MOTORING PUBLIC AND ADJOINING RESIDENTIAL AREAS.
18. WHEN MILLED PAVEMENT IS OPEN TO TRAFFIC THE MAXIMUM GRADE DIFFERENTIAL BETWEEN PASSES OF THE MILLING MACHINE SHALL NOT EXCEED 1/2 INCHES (40 MM) WHERE THE SPEED LIMIT IS 45 MPH (80 KM/H) OR LESS AND 1 INCH (25 MM) WHERE THE SPEED LIMIT IS GREATER THAN 45 MPH (80 KM/H). WITH WRITTEN APPROVAL FROM THE ENGINEER, A MAXIMUM GRADE DIFFERENTIAL OF 3 INCHES (75 MM) MAY BE ALLOWED IF THE EDGE OF THE MILLING IS SLOPED A MINIMUM 1:3 (V:H)
19. BUTT JOINTS WILL BE INSTALLED AT THE ENDS OF ALL RESURFACING (WHERE RESURFACING MEETS EXISTING PAVEMENT), IN ACCORDANCE WITH THE "BUTT JOINT AND HOT-MIX ASPHALT TAPER DETAILS" SHEET INCLUDED IN THE PLANS, UNLESS OTHERWISE SPECIFIED.
20. IT SHALL BE THE CONTRACTOR'S RESPONSIBILITY TO VERIFY ALL DIMENSIONS AND CONDITIONS EXISTING IN THE FIELD PRIOR TO CONSTRUCTION AND ORDERING OF MATERIALS.
21. THE CONTRACTOR SHALL COORDINATE CONSTRUCTION ACTIVITIES WITH UTILITY COMPANIES.
22. CURB AND GUTTER REMOVAL AND REPLACEMENT LOCATIONS WILL BE DETERMINED IN THE FIELD BY THE ENGINEER.

INDEX OF SHEETS

SHEET NO.	DESCRIPTION
1	TITLE SHEET
2	INDEX OF SHEETS, STATE STANDARDS, GENERAL NOTES
3	SUMMARY OF QUANTITIES
4-5	TYPICAL SECTIONS
6-9	PLAN AND PAVEMENT MARKING DETAILS
9A	RUMBLE STRIPS FOR CENTERLINE
10	DETECTOR LOOP REPLACEMENT PLAN
11	PAVEMENT PATCHING FOR HMA SURFACED PAVEMENT
12	CURB OR CURB AND GUTTER REMOVAL AND REPLACEMENT
13	BUTT JOINTS AND HMA TAPER DETAILS
14	TRAFFIC CONTROL AND PROTECTION FOR SIDE ROADS, INTERSECTIONS AND DRIVEWAYS
15	RAISED REFLECTIVE PAVEMENT MARKERS (SNOW PLOW RESISTANT)
16	DISTRICT ONE TYPICAL PAVEMENT MARKINGS
17	TRAFFIC CONTROL AND PROTECTION AT TURN BAYS (TO REMAIN OPEN TO TRAFFIC)
18	PAVEMENT MARKING LETTERS AND SYMBOLS FOR TRAFFIC STAGING
19	ARTERIAL ROAD / INFORMATION SIGN
20	DISTRICT 1 DETECTOR LOOP INSTALLATION DETAIL FOR ROADWAY RESURFACING

STATE STANDARDS

STANDARD NO.	DESCRIPTION
000001-05	STANDARD SYMBOLS, ABBREVIATIONS AND PATTERNS
442201-03	CLASS C AND D PATCHES
701006-03	OFF ROAD OPERATIONS, 2L, 2W, 4.5m (15') TO 600mm (24") FROM PAVEMENT EDGE
701011-02	OFF ROAD MOVING OPERATIONS, 2L, 2W, DAY ONLY
701201-03	LANE CLOSURE, 2L, 2W DAY ONLY FOR SPEEDS LESS \geq 45 MPH
701301-03	LANE CLOSURE, 2L, 2W, SHORT TIME OPERATIONS
701306-02	LANE CLOSURE, 2L, 2W, SLOW MOVING OPERATIONS, DAY ONLY, FOR SPEEDS \geq 45 MPH
701311-03	LANE CLOSURE, 2L, 2W, MOVING OPERATIONS, DAY ONLY
701421-02	LANE CLOSURE, MULTILANE, DAY OPERATIONS ONLY, FOR SPEEDS \geq 45 MPH TO 55 MPH
701426-03	LANE CLOSURE, MULTILANE, INTERMITTENT OR MOVING OPERATIONS FOR SPEEDS \geq 45 MPH
701701-06	URBAN LANE CLOSURE MULTILANE INTERSECTION
701901-01	TRAFFIC CONTROL DEVICES

701336-05

PLOT DATE = 1/28/2010
 PLOT SCALE = 1:50
 USER NAME = mhaska
 MODEL = Defaul



Excellence through Ownership

200 West Front Street
Wheaton, IL 60187

DESIGNED - MAK	REVISED - ---
DRAWN - DJW	REVISED - ---
CHECKED - MTH	REVISED - ---
DATE - 1/28/2010 5:12:39 PM	REVISED - ---

**STATE OF ILLINOIS
DEPARTMENT OF TRANSPORTATION**

IL RTE 56 (BUTTERFIELD RD)

**INDEX OF SHEETS, STATE
STANDARDS, GENERAL NOTES**

F.A.P. RTE.	SECTION	COUNTY	TOTAL SHEETS	SHEET NO.
365	59 RS-3	DUPAGE	20	2
CONTRACT NO. 60J49				

SCALE: N/A

SHEET NO. ___ OF 20 SHEETS

STA. _____ TO STA. _____

FED. ROAD DIST. NO. 1 ILLINOIS FED. AID PROJECT

Rev.

SUMMARY OF QUANTITIES

CODE NO.	ITEM DESCRIPTION	UNIT	100% STATE TOTAL QUANTITY	CONSTRUCTION TYPE CODE I000-2A
20201006	GRADING AND SHAPING SHOULDERS	UNIT	215	215
40600200	BITUMINOUS MATERIALS (PRIME COAT)	TON	0	0
40600300	AGGREGATE (PRIME COAT)	TON	83	83
40600400	MIXTURE FOR CRACKS, JOINTS, AND FLANGWAYS	TON	62	62
40600826	POLYMERIZED LEVELING BINDER (MACHINE METHOD), IL 4.75, N50	TON	1,735	1,735
40600895	CONSTRUCTING TEST STRIP	EACH	2	2
40600982	HOT-MIX ASPHALT SURFACE REMOVAL - BUTT JOINT	SQ YD	137	137
40601005	HOT-MIX ASPHALT REPLACEMENT OVER PATCHES	TON	656	656
40603340	HOT-MIX ASPHALT SURFACE COURSE, MIX "D", N70	TON	3,470	3,470
42001300	PROTECTIVE COAT	SQ YD	23	23
44000158	HOT-MIX ASPHALT SURFACE REMOVAL, 2 1/4"	SQ YD	41,298	41,298
44001700	COMBINATION CONCRETE CURB AND GUTTER REMOVAL AND REPLACEMENT	FOOT	100	100
44002216	HOT-MIX ASPHALT REMOVAL OVER PATCHES, 4"	SQ YD	2928	2928
44201761	CLASS D PATCHES, TYPE I, 10 INCH	SQ YD	248	248
44201765	CLASS D PATCHES, TYPE II, 10 INCH	SQ YD	1,239	1,239
44201769	CLASS D PATCHES, TYPE III, 10 INCH	SQ YD	496	496
44201771	CLASS D PATCHES, TYPE IV, 10 INCH	SQ YD	496	496
48102100	AGGREGATE WEDGE SHOULDER, TYPE B	TON	1,240	1,240
67000400	ENGINEER'S FIELD OFFICE, TYPE A	CAL MO	6	6
67100100	MOBILIZATION	L SUM	1	1
70100600	TRAFFIC CONTROL AND PROTECTION, STANDARD 701336	L SUM	1	1
70100460	TRAFFIC CONTROL AND PROTECTION, STANDARD 701306	L SUM	1	1
70102635	TRAFFIC CONTROL AND PROTECTION, STANDARD 701701	L SUM	1	1
70300100	SHORT-TERM PAVEMENT MARKING	FOOT	3,915	3,915
70300210	TEMPORARY PAVEMENT MARKING - LETTERS AND SYMBOLS	SQ FT	510	510
70300220	TEMPORARY PAVEMENT MARKING - LINE 4"	FOOT	46,690	46,690
70300240	TEMPORARY PAVEMENT MARKING - LINE 6"	FOOT	1,736	1,736
70300250	TEMPORARY PAVEMENT MARKING - LINE 8"	FOOT	121	121
70300260	TEMPORARY PAVEMENT MARKING - LINE 12"	FOOT	529	529
70300280	TEMPORARY PAVEMENT MARKING - LINE 24"	FOOT	109	109
70301000	WORK ZONE PAVEMENT MARKING REMOVAL	SQ FT	2,521	2,521
* 78000100	THERMOPLASTIC PAVEMENT MARKING - LETTERS AND SYMBOLS	SQ FT	510	510
* 78000200	THERMOPLASTIC PAVEMENT MARKING - LINE 4"	FOOT	46,690	46,690
* 78000400	THERMOPLASTIC PAVEMENT MARKING - LINE 6"	FOOT	1,736	1,736
* 78000500	THERMOPLASTIC PAVEMENT MARKING - LINE 8"	FOOT	121	121
* 78000600	THERMOPLASTIC PAVEMENT MARKING - LINE 12"	FOOT	529	529
78000650	THERMOPLASTIC PAVEMENT MARKING - LINE 24"	FOOT	109	109
* 78100100	RAISED REFLECTIVE PAVEMENT MARKER	EACH	392	392
78300200	RAISED REFLECTIVE PAVEMENT MARKER REMOVAL	EACH	353	353
* 88600600	DETECTOR LOOP REPLACEMENT	FOOT	556	556
X0325866	CENTER LINE - RUMBLE STRIP	FOOT	6,378	6,378
X0322256	TEMPORARY INFORMATION SIGNING	SQ FT	103	103

* SPECIALTY ITEM

1/28/2010 11:50 AM
 PLOT DATE = 1/28/2010
 PLOT SCALE = 1:50
 USER NAME = rjngroup
 MODEL = Default



Excellence through Ownership

200 West Front Street
Wheaton, IL 60187

DESIGNED - MAK	REVISED - ---
DRAWN - DJW	REVISED - ---
CHECKED - MTH	REVISED - ---
DATE - 1/28/2010 5:12:39 PM	REVISED - ---

**STATE OF ILLINOIS
DEPARTMENT OF TRANSPORTATION**

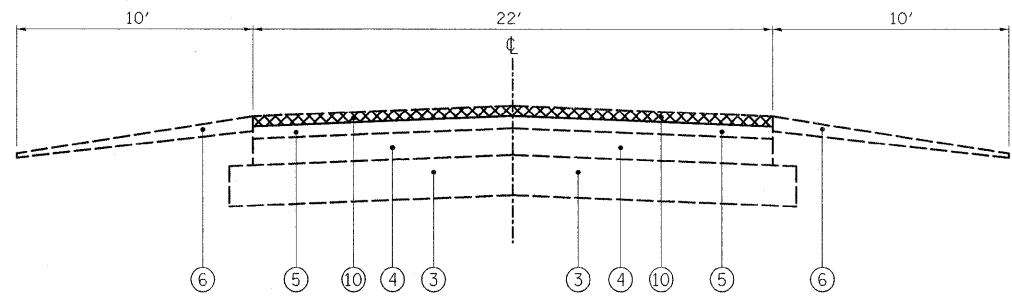
IL RTE 56 (BUTTERFIELD RD)

SUMMARY OF QUANTITIES

SCALE: N/A SHEET NO. ___ OF 20 SHEETS STA. _____ TO STA. _____

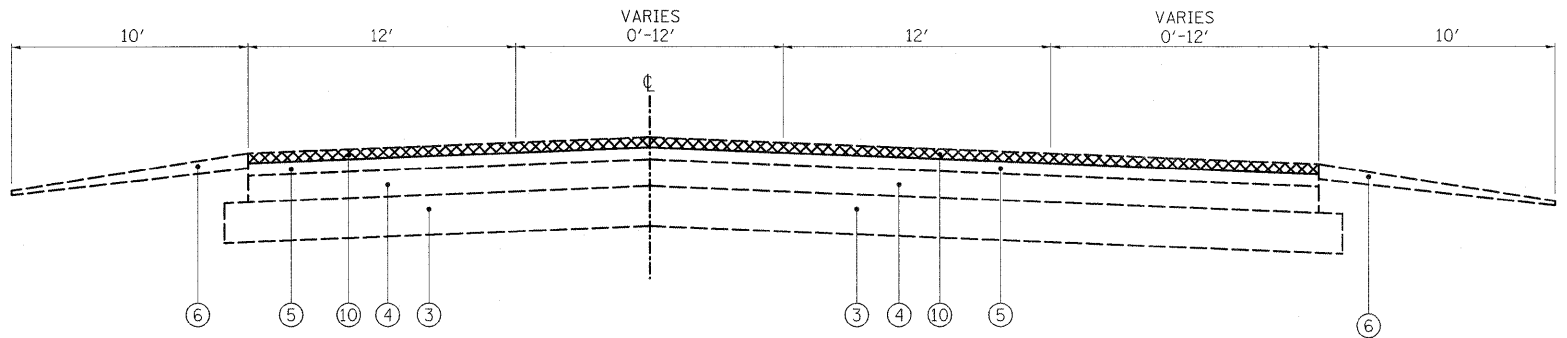
F.A.P. RTE. 365	SECTION 59 RS-3	COUNTY DUPAGE	TOTAL SHEETS 20	SHEET NO. 3
CONTRACT NO. 60J49				
FED. ROAD DIST. NO. 1 ILLINOIS FED. AID PROJECT				

Rev.



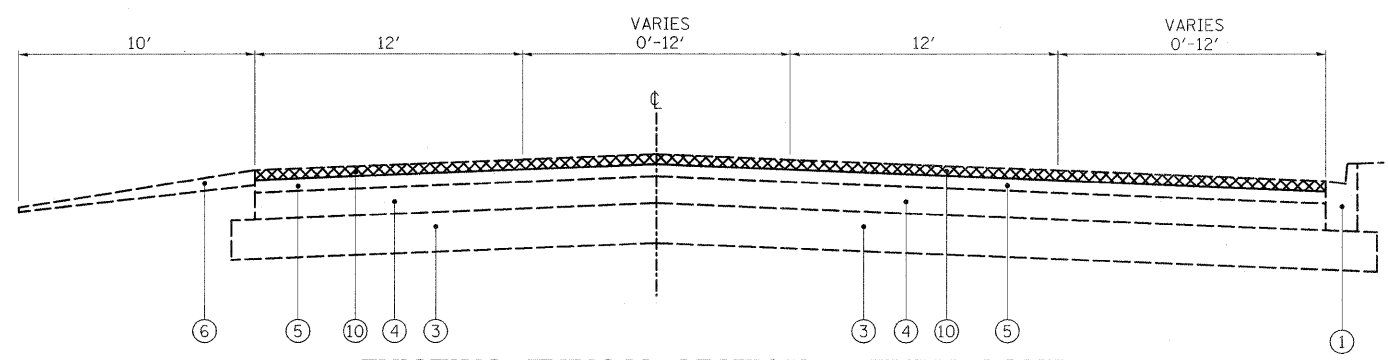
EXISTING TYPICAL SECTION - IL 56

STA. 37+32 TO STA. 46+46
 STA. 60+14 TO STA. 72+22
 STA. 86+20 TO STA. 117+72
 STA. 136+37 TO STA. 145+12



EXISTING TYPICAL SECTION - TURN LANE

STA. 46+46 TO STA. 51+06
 STA. 52+51 TO STA. 60+14
 STA. 72+22 TO STA. 76+28
 STA. 78+14 TO STA. 86+20
 STA. 117+72 TO STA. 129+34
 STA. 130+66 TO STA. 135+17
 STA. 145+12 TO STA. 151+41
 STA. 153+34 TO STA. 154+50



EXISTING TYPICAL SECTION - TURN LANE

STA. 51+06 TO STA. 52+51
 STA. 76+28 TO STA. 78+14
 STA. 129+34 TO STA. 130+66
 STA. 135+17 TO STA. 136+37
 STA. 151+41 TO STA. 153+34

LEGEND

- ① EXISTING COMBINATION CURB AND GUTTER, TYPE B-6.24
- ② EXISTING COMBINATION CURB AND GUTTER, TYPE M-6.12
- ③ EXISTING AGGREGATE BASE COURSE
- ④ EXISTING PCC PAVEMENT, ±10"
- ⑤ EXISTING HOT-MIX ASPHALT PAVEMENT, ±4" (BEFORE SURFACE REMOVAL)
- ⑥ EXISTING AGGREGATE SHOULDER
- ⑦ EXISTING HOT-MIX ASPHALT SHOULDER, ±8" (BEFORE SURFACE REMOVAL)
- ⑧ EXISTING PCC MEDIAN
- ⑨ EXISTING CORRUGATED MEDIAN
- ⑩ HOT-MIX ASPHALT SURFACE REMOVAL, 2 1/4"

PLOT DATE = 1/28/2010
 FILE NAME = K:\1122524\Cad\Drawings\IL56\Typical Sections.dgn
 USER NAME = mhaka
 MODEL = Existing Typical Section



200 West Front Street
 Wheaton, IL 60187

DESIGNED - MAK	REVISED -
DRAWN - DJW	REVISED -
CHECKED - MTH	REVISED -
DATE - 1/28/2010 5:12:39 PM	REVISED -

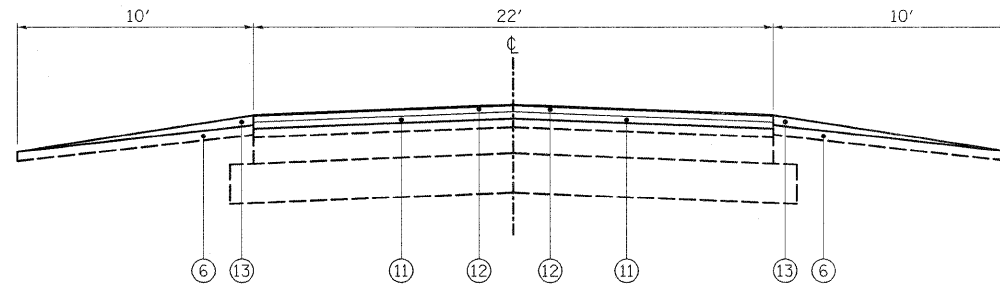
STATE OF ILLINOIS
 DEPARTMENT OF TRANSPORTATION

IL RTE 56 (BUTTERFIELD RD)

EXISTING TYPICAL SECTIONS

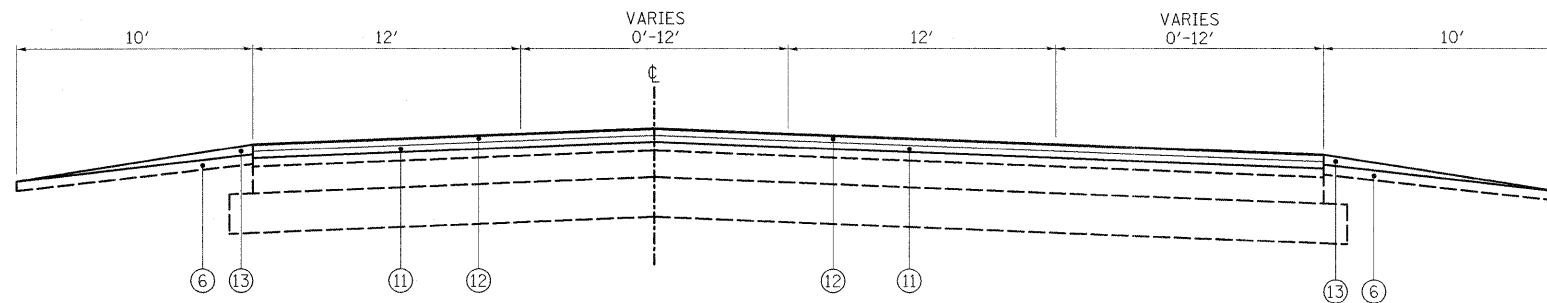
SCALE: NTS SHEET NO. 4 OF 20 SHEETS STA. TO STA.

F.A.P. RTE.	SECTION	COUNTY	TOTAL SHEETS	SHEET NO.
365	59 RS-3	DUPAGE	20	4
CONTRACT NO. 60J49				
FED. ROAD DIST. NO. 1 ILLINOIS FED. AID PROJECT				



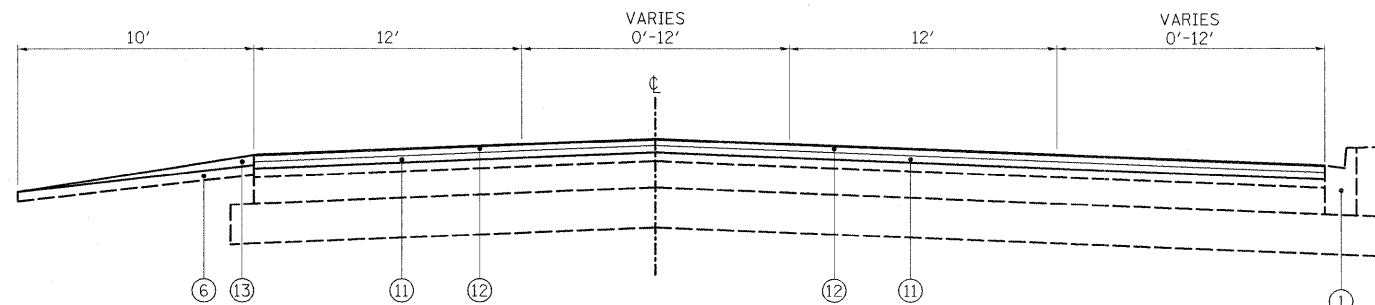
PROPOSED TYPICAL SECTION – IL 56

STA. 37+32 TO STA. 46+46
 STA. 60+14 TO STA. 72+22
 STA. 86+20 TO STA. 117+72
 STA. 136+37 TO STA. 145+12



PROPOSED TYPICAL SECTION – TURN LANE

STA. 46+46 TO STA. 51+06
 STA. 52+51 TO STA. 60+14
 STA. 72+22 TO STA. 76+28
 STA. 78+14 TO STA. 86+20
 STA. 117+72 TO STA. 129+34
 STA. 130+66 TO STA. 135+17
 STA. 145+12 TO STA. 151+41
 STA. 153+34 TO STA. 154+50



PROPOSED TYPICAL SECTION – TURN LANE

STA. 51+06 TO STA. 52+51
 STA. 76+28 TO STA. 78+14
 STA. 129+34 TO STA. 130+66
 STA. 135+17 TO STA. 136+37
 STA. 151+41 TO STA. 153+34

LEGEND

- ① EXISTING COMBINATION CURB AND GUTTER, TYPE B-6.24
- ② EXISTING COMBINATION CURB AND GUTTER, TYPE M-6.12
- ③ EXISTING AGGREGATE BASE COURSE
- ④ EXISTING PCC PAVEMENT, ±10"
- ⑤ EXISTING HOT-MIX ASPHALT PAVEMENT, ±4" (BEFORE SURFACE REMOVAL)
- ⑥ EXISTING AGGREGATE SHOULDER
- ⑦ EXISTING HOT-MIX ASPHALT SHOULDER, ±8" (BEFORE SURFACE REMOVAL)
- ⑧ EXISTING PCC MEDIAN
- ⑨ EXISTING CORRUGATED MEDIAN
- ⑩ HOT-MIX ASPHALT SURFACE REMOVAL, 2 1/4"
- ⑪ PROPOSED POLYMERIZED LEVELING BINDER (MACHINE METHOD), IL 4.75, N50, 3/4"
- ⑫ PROPOSED HOT-MIX ASPHALT SURFACE COURSE, "MIX D", N70, 1 1/2"
- ⑬ PROPOSED GRADING & SHAPING SHOULDERS/PROPOSED AGGREGATE WEDGE SHOULDER, TYPE B

NOTE: CONTRACTOR SHALL PATCH BEFORE MILLING.

HOT-MIX ASPHALT MIXTURE

MIXTURE	AIR VOIDS (%)
HOT-MIX ASPHALT SURFACE COURSE, MIX "D", N70 (IL 9.5 mm)	4% @ 70 GYR.
POLYMERIZED LEVELING BINDER (MACHINE METHOD), IL 4.75, N50	4% @ 50 GYR.
HOT-MIX ASPHALT REPLACEMENT OVER PATCHES (HMA BINDER, IL-19mm)	4% @ 70 GYR.
CLASS D PATCH/PARTIAL DEPTH PATCHING (HMA BINDER, IL-19 mm, N70)	4% @ 70 GYR.

THE UNIT WEIGHT USED TO CALCULATE ALL HOT-MIX ASPHALT SURFACE MIXTURES IS 112 LBS/SQ YD/IN.

THE "AC TYPE" FOR POLYMERIZED HMA MIXES SHALL BE "SBS/SBR PG 70-22" AND FOR NON-POLYMERIZED HMA THE "AC TYPE" SHALL BE "PG 64-22" UNLESS MODIFIED BY DISTRICT ONE SPECIAL PROVISIONS. FOR "PERCENT OF RAP" SEE DISTRICT ONE SPECIAL PROVISIONS.

PLOT DATE = 1/28/2010
 FILE NAME = K:\11225524\road\sheet\IL56 (general) Sections.dgn
 USER = jh
 MODEL = Proposed Typical Section



200 West Front Street
 Wheaton, IL 60187

DESIGNED -	REVISED -
DRAWN -	REVISED -
CHECKED -	REVISED -
DATE - 1/28/2010 5:12:39 PM	REVISED -

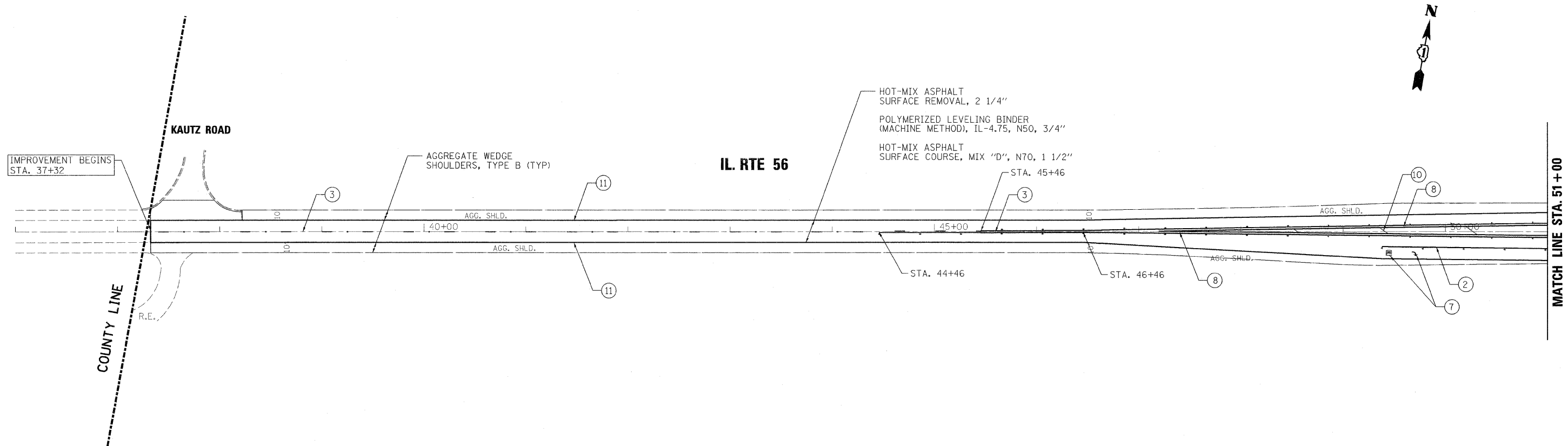
STATE OF ILLINOIS
 DEPARTMENT OF TRANSPORTATION

IL RTE 56 (BUTTERFIELD RD)

PROPOSED TYPICAL SECTIONS

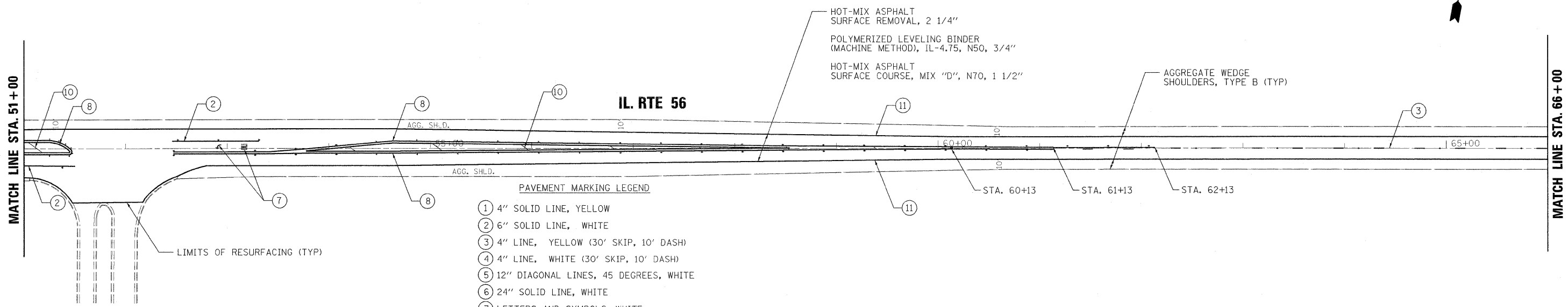
F.A.P. RTE.	SECTION	COUNTY	TOTAL SHEETS	SHEET NO.
365	59 RS-3	DUPAGE	20	5
CONTRACT NO. 60J49				
FED. ROAD DIST. NO. 1 ILLINOIS FED. AID PROJECT				

SCALE: SHEET NO. 5 OF 20 SHEETS STA. TO STA.



SYMBOLS LEGEND

- ◆ RAISED REFLECTIVE PAVEMENT MARKER (TWO - WAY AMBER)
- ◆ RAISED REFLECTIVE PAVEMENT MARKER (ONE - WAY AMBER)
- ◆ RAISED REFLECTIVE PAVEMENT MARKER (ONE - WAY CRYSTAL)



PAVEMENT MARKING LEGEND

- ① 4" SOLID LINE, YELLOW
- ② 6" SOLID LINE, WHITE
- ③ 4" LINE, YELLOW (30' SKIP, 10' DASH)
- ④ 4" LINE, WHITE (30' SKIP, 10' DASH)
- ⑤ 12" DIAGONAL LINES, 45 DEGREES, WHITE
- ⑥ 24" SOLID LINE, WHITE
- ⑦ LETTERS AND SYMBOLS, WHITE
- ⑧ 4" DOUBLE CENTER LINE, YELLOW
- ⑨ 8" SOLID LINE, WHITE
- ⑩ 12" DIAGONAL LINES, 45 DEGREES @ 75' O.C., YELLOW
- ⑪ 4" SOLID LINE, WHITE

*ALL PAVEMENT MARKING SHALL BE THERMOPLASTIC

PLOT DATE = 2/25/2010
 PLOT SCALE = 1"=50'
 USER NAME = dreedas
 MODEL = DeFault

rjngroup
 Excellence through Ownership

200 West Front Street
 Wheaton, IL 60187

DESIGNED - MAK	REVISED - 2/3/10 IDOT COMMENTS
DRAWN - DJW	REVISED -
CHECKED - MTH	REVISED -
DATE - 1/29/10	REVISED -

**STATE OF ILLINOIS
 DEPARTMENT OF TRANSPORTATION**

IL RTE 56 (BUTTERFIELD RD)

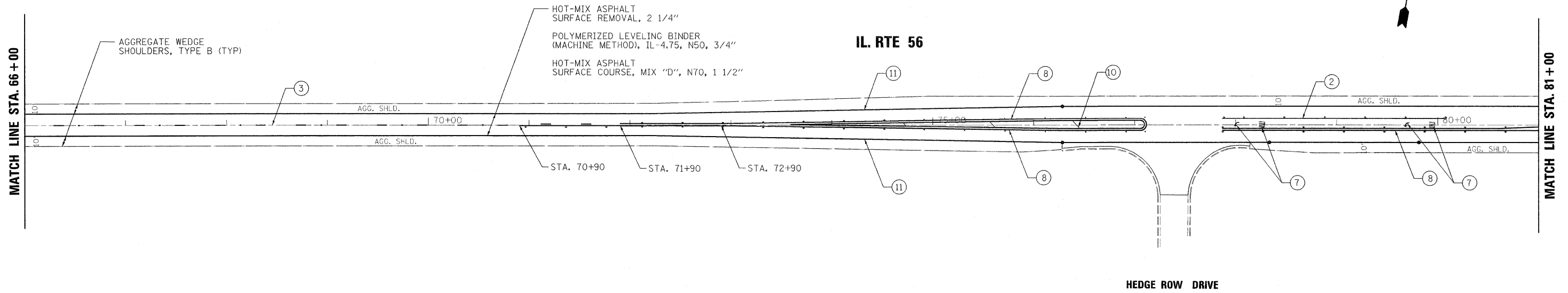
**ROADWAY AND
 PAVEMENT MARKING PLAN**

SCALE: 1"=50'

SHEET NO. 6 OF 20 SHEETS

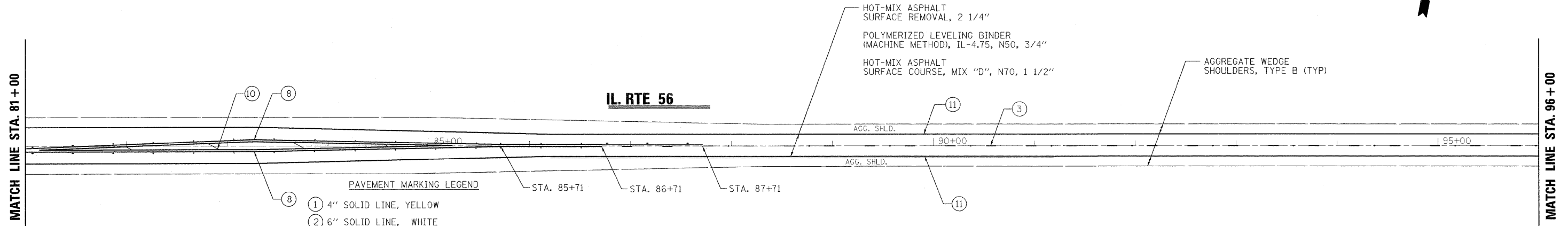
STA. 36+00 TO STA. 66+00

F.A.P. RTE. 365	SECTION 59 RS-3	COUNTY DUPAGE	TOTAL SHEETS 20	SHEET NO. 6
CONTRACT NO. 60J49			FED. ROAD DIST. NO. 1 ILLINOIS FED. AID PROJECT	



SYMBOLS LEGEND

- RAISED REFLECTIVE PAVEMENT MARKER (TWO - WAY AMBER)
- RAISED REFLECTIVE PAVEMENT MARKER (ONE - WAY AMBER)
- RAISED REFLECTIVE PAVEMENT MARKER (ONE - WAY CRYSTAL)



- PAVEMENT MARKING LEGEND**
- ① 4" SOLID LINE, YELLOW
 - ② 6" SOLID LINE, WHITE
 - ③ 4" LINE, YELLOW (30' SKIP, 10' DASH)
 - ④ 4" LINE, WHITE (30' SKIP, 10' DASH)
 - ⑤ 12" DIAGONAL LINES, 45 DEGREES, WHITE
 - ⑥ 24" SOLID LINE, WHITE
 - ⑦ LETTERS AND SYMBOLS, WHITE
 - ⑧ 4" DOUBLE CENTER LINE, YELLOW
 - ⑨ 8" SOLID LINE, WHITE
 - ⑩ 12" DIAGONAL LINES, 45 DEGREES @ 75' O.C., YELLOW
 - ⑪ 4" SOLID LINE, WHITE
- *ALL PAVEMENT MARKING SHALL BE THERMOPLASTIC

PLOT DATE = 2/15/2010
 PLOT SCALE = 1"=50'
 USER NAME = dchadler
 MODEL = Default

rjngroup
 Excellence through Ownership
 200 West Front Street
 Wheaton, IL 60187

DESIGNED - MAK	REVISED - 2/3/10 IDOT COMMENTS
DRAWN - DJW	REVISED - ---
CHECKED - MTH	REVISED - ---
DATE - 1/29/10	REVISED - ---

**STATE OF ILLINOIS
 DEPARTMENT OF TRANSPORTATION**

IL RTE 56 (BUTTERFIELD RD)
 SCALE: 1"=50'

**ROADWAY AND
 PAVEMENT MARKING PLAN**

F.A.P. RTE. 365	SECTION 59 RS-3	COUNTY DUPAGE	TOTAL SHEETS 20	SHEET NO. 7
CONTRACT NO. 60J49				
FED. ROAD DIST. NO. 1 ILLINOIS FED. AID PROJECT				

SHEET NO. 7 OF 20 SHEETS STA. 66+00 TO STA. 96+00

MATCH LINE STA. 96+00

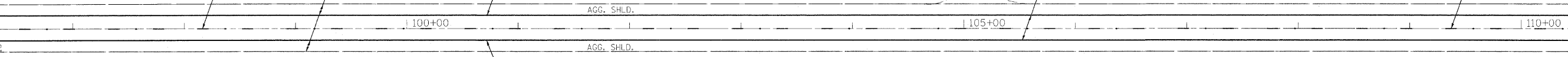
MATCH LINE STA. 111+00

IL. RTE 56



HOT-MIX ASPHALT
SURFACE REMOVAL, 2 1/4"
POLYMERIZED LEVELING BINDER
(MACHINE METHOD), IL-4.75, N50, 3/4"
HOT-MIX ASPHALT
SURFACE COURSE, MIX "D", N70, 1 1/2"

AGGREGATE WEDGE
SHOULDERS, TYPE B (TYP)



SYMBOLS LEGEND

- ◆ RAISED REFLECTIVE PAVEMENT MARKER (TWO - WAY AMBER)
- ◆ RAISED REFLECTIVE PAVEMENT MARKER (ONE - WAY AMBER)
- ◆ RAISED REFLECTIVE PAVEMENT MARKER (ONE - WAY CRYSTAL)

MATCH LINE STA. 111+00

MATCH LINE STA. 126+00

IL. RTE 56



LIMITS OF RESURFACING (TYP)

N. EOLA ROAD

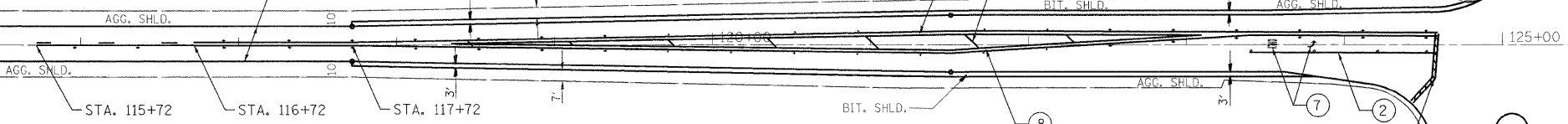
HOT-MIX ASPHALT
SURFACE REMOVAL, 2 1/4"
POLYMERIZED LEVELING BINDER
(MACHINE METHOD), IL-4.75, N50, 3/4"
HOT-MIX ASPHALT
SURFACE COURSE, MIX "D", N70, 1 1/2"

AGGREGATE WEDGE
SHOULDERS, TYPE B (TYP)

PAVEMENT MARKING LEGEND

- 4" SOLID LINE, YELLOW
- 6" SOLID LINE, WHITE
- 4" LINE, YELLOW (30' SKIP, 10' DASH)
- 4" LINE, WHITE (30' SKIP, 10' DASH)
- 12" DIAGONAL LINES, 45 DEGREES, WHITE
- 24" SOLID LINE, WHITE
- LETTERS AND SYMBOLS, WHITE
- 4" DOUBLE CENTER LINE, YELLOW
- 8" SOLID LINE, WHITE
- 12" DIAGONAL LINES, 45 DEGREES @ 75' O.C., YELLOW
- 4" SOLID LINE, WHITE

*ALL PAVEMENT MARKING SHALL BE THERMOPLASTIC



PLOT DATE = 2/5/2010
PLOT SCALE = 1"=50'
USER NAME = cheddas
MODEL = DeFault



200 West Front Street
Wheaton, IL 60187

DESIGNED - MAK	REVISED - 2/3/10 IDOT COMMENTS
DRAWN - DJW	REVISED - ---
CHECKED - MTH	REVISED - ---
DATE - 1/29/10	REVISED - ---

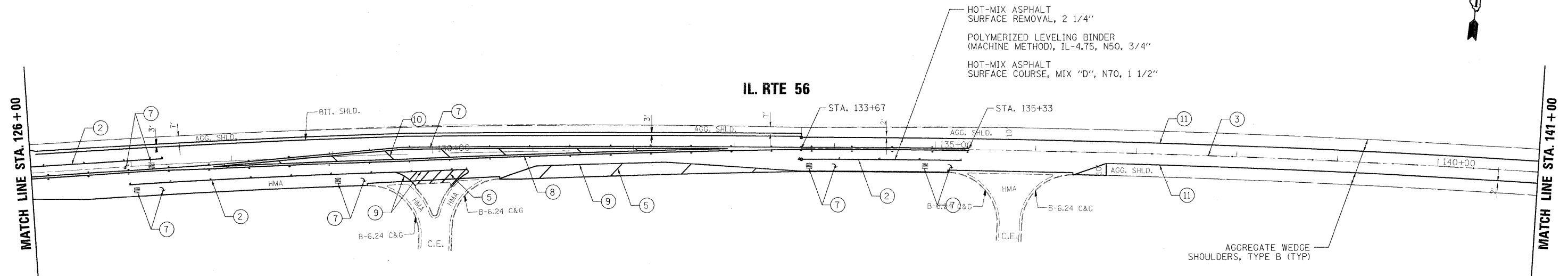
STATE OF ILLINOIS
DEPARTMENT OF TRANSPORTATION

IL RTE 56 (BUTTERFIELD RD)

ROADWAY AND
PAVEMENT MARKING PLAN

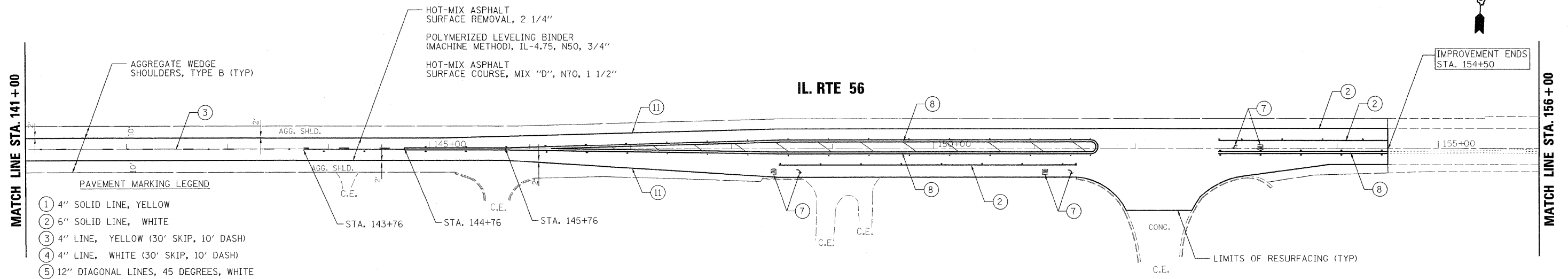
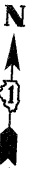
F.A.P. RTE. 365	SECTION 59 RS-3	COUNTY DUPAGE	TOTAL SHEETS 20	SHEET NO. 8
CONTRACT NO. 60J49				
FED. ROAD DIST. NO. 1 ILLINOIS FED. AID PROJECT				

SCALE: 1"=50' SHEET NO. 8 OF 20 SHEETS STA. 96+00 TO STA. 126+00



SYMBOLS LEGEND

- RAISED REFLECTIVE PAVEMENT MARKER (TWO - WAY AMBER)
- RAISED REFLECTIVE PAVEMENT MARKER (ONE - WAY AMBER)
- RAISED REFLECTIVE PAVEMENT MARKER (ONE - WAY CRYSTAL)



PAVEMENT MARKING LEGEND

- ① 4" SOLID LINE, YELLOW
- ② 6" SOLID LINE, WHITE
- ③ 4" LINE, YELLOW (30' SKIP, 10' DASH)
- ④ 4" LINE, WHITE (30' SKIP, 10' DASH)
- ⑤ 12" DIAGONAL LINES, 45 DEGREES, WHITE
- ⑥ 24" SOLID LINE, WHITE
- ⑦ LETTERS AND SYMBOLS, WHITE
- ⑧ 4" DOUBLE CENTER LINE, YELLOW
- ⑨ 8" SOLID LINE, WHITE
- ⑩ 12" DIAGONAL LINES, 45 DEGREES @ 75' O.C., YELLOW
- ⑪ 4" SOLID LINE, WHITE

• ALL PAVEMENT MARKING SHALL BE THERMOPLASTIC

PLOT DATE = 2/5/2010
 PLOT SCALE = 1"=50'
 USER NAME = dhwadax
 MODEL = Default



200 West Front Street
Wheaton, IL 60187

DESIGNED - MAK	REVISED Δ 2/3/10 IDOT COMMENTS
DRAWN - DJW	REVISED - ---
CHECKED - MTH	REVISED - ---
DATE - 1/29/10	REVISED - ---

**STATE OF ILLINOIS
DEPARTMENT OF TRANSPORTATION**

IL RTE 56 (BUTTERFIELD RD)

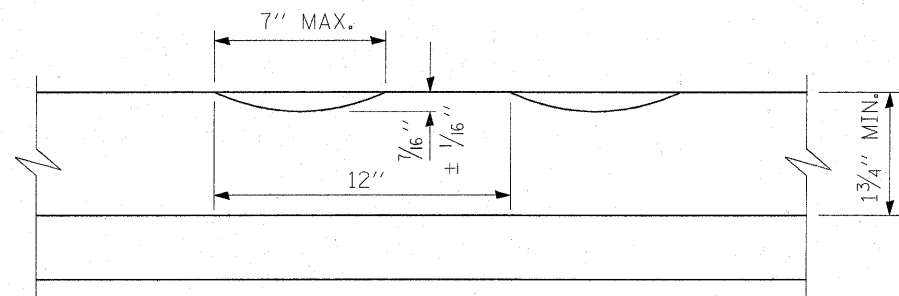
**ROADWAY AND
PAVEMENT MARKING PLAN**

SCALE: 1"=50'

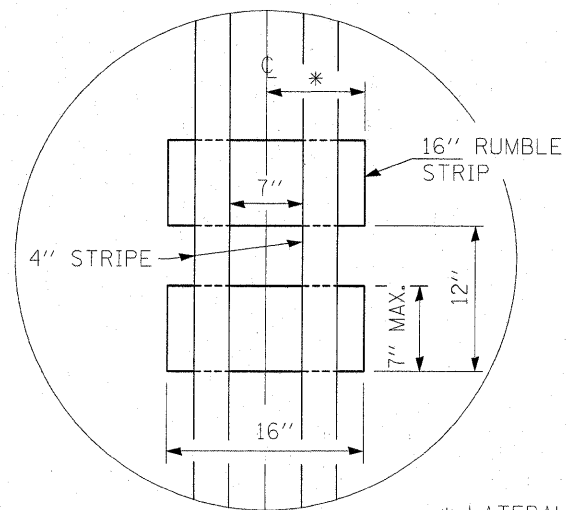
SHEET NO. 9 OF 20 SHEETS

STA. 126+00 TO STA. 156+00

F.A.P. RTE. 365	SECTION 59 RS-3	COUNTY DUPAGE	TOTAL SHEETS 20	SHEET NO. 9
CONTRACT NO. 60J49			FED. ROAD DIST. NO. 1 ILLINOIS FED. AID PROJECT	

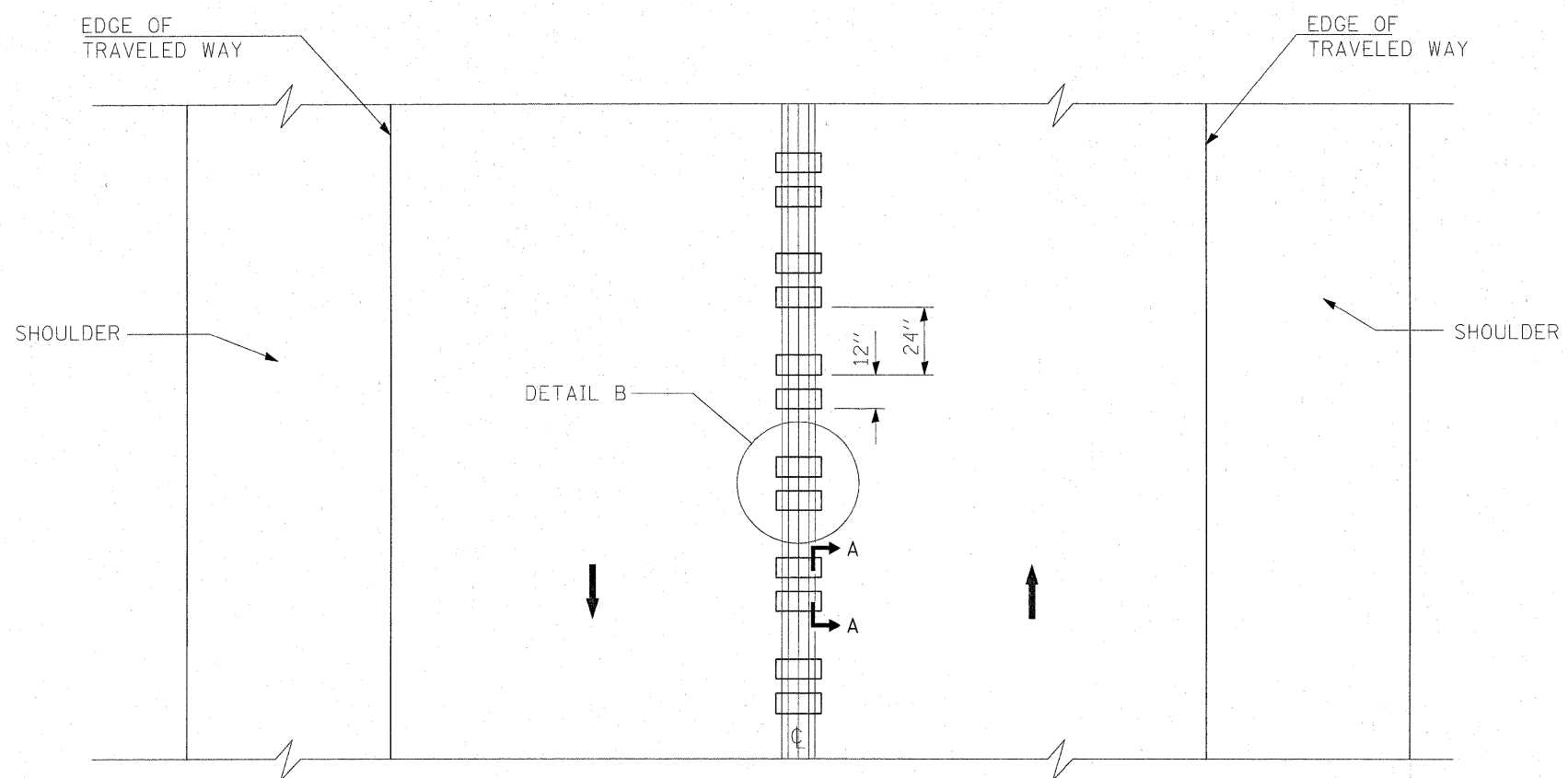


SECTION A-A



* LATERAL DEVIATION SHALL NOT EXCEED ONE INCH IN 100 FEET.

DETAIL B



TWO-WAY ROAD

GENERAL NOTES

SEE STANDARD 780001 FOR OTHER STRIPING LAYOUTS.

RUMBLE STRIPS SHALL NOT BE PLACED ON BRIDGES.

ALL RUMBLE STRIPS SHALL BE MILLED.

CENTERLINE RUMBLE STRIPS SHALL BE CONTINUOUS THROUGH CONNECTIONS OF SIDEROADS WITH NO LEFT TURN LANES.

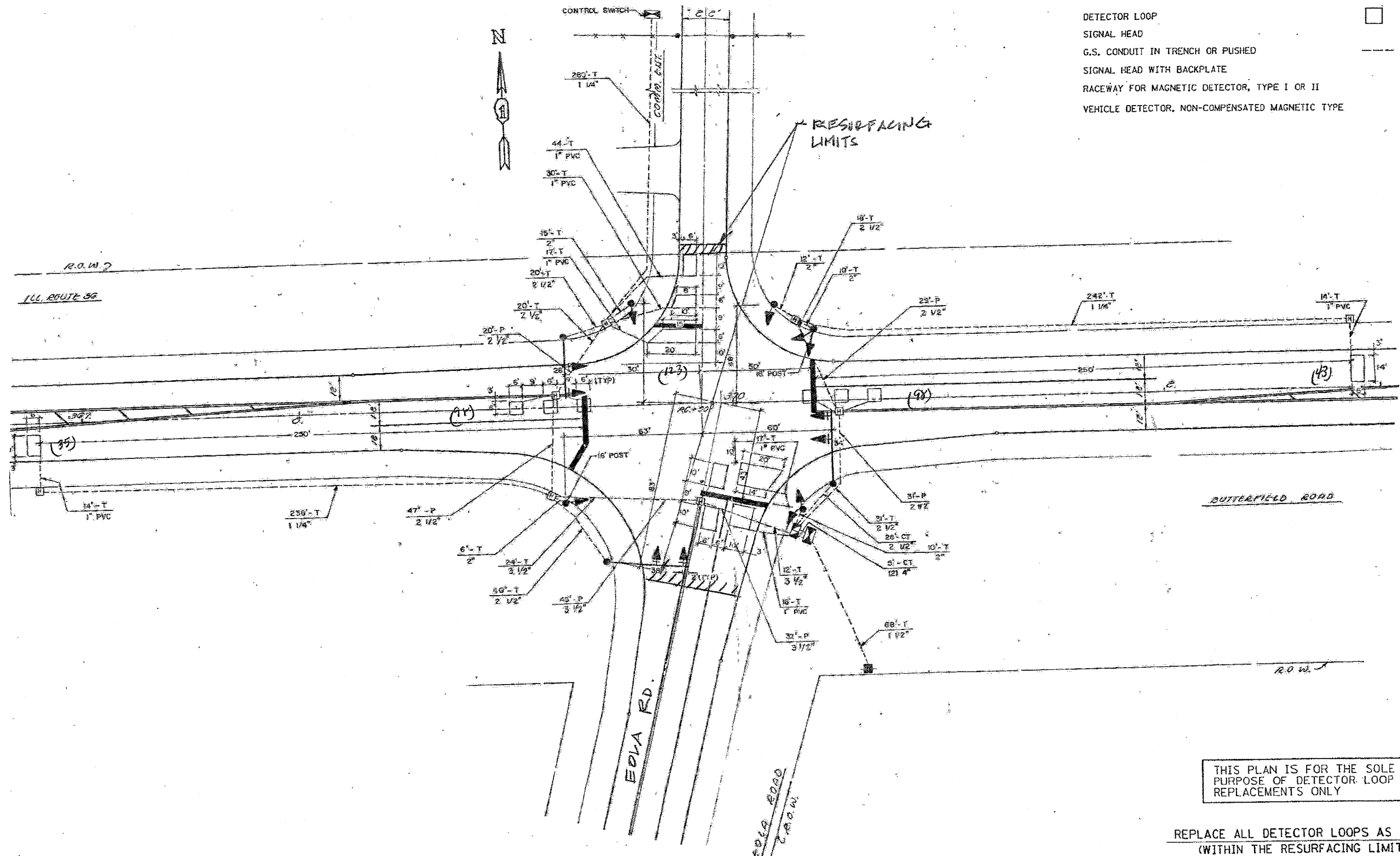
DISCONTINUE CENTERLINE RUMBLE STRIPS THROUGH THE LIMITS OF ALL LEFT TURN LANES, INCLUDING ANY LANE TAPER SECTIONS.

WHERE USED, ADJUST SPACING OF RAISED REFLECTIVE PAVEMENT MARKERS TO FALL IN WIDER GAP BETWEEN RUMBLE STRIPS.

FILE NAME =	USER NAME = banks1	DESIGNED -	REVISED -	STATE OF ILLINOIS DEPARTMENT OF TRANSPORTATION	RUMBLE STRIPS FOR CENTERLINE, NON-FREEWAY	F.A.P. RTE.	SECTION	COUNTY	TOTAL SHEETS	SHEET NO.	
cs:\pw\work\pwidot\banks1\d0161580\0103110	sh-t-plan.dgn	DRAWN -	REVISED -			365	59 RS-3	DUPAGE	24	9A	
	PLOT SCALE = 50.0000' / IN.	CHECKED -	REVISED -			CONTRACT NO. 60J49					
	PLOT DATE = 3/4/2018	DATE -	REVISED -			ILLINOIS FED. AID PROJECT					
						SCALE:	SHEET NO.	OF	SHEETS	STA. TO STA.	

TRAFFIC SIGNAL LEGEND

	PROPOSED	EXISTING
DETECTOR LOOP		
SIGNAL HEAD		
G.S. CONDUIT IN TRENCH OR PUSHED		
SIGNAL HEAD WITH BACKPLATE		
RACEWAY FOR MAGNETIC DETECTOR, TYPE I OR II		
VEHICLE DETECTOR, NON-COMPENSATED MAGNETIC TYPE		



THIS PLAN IS FOR THE SOLE PURPOSE OF DETECTOR LOOP REPLACEMENTS ONLY

REPLACE ALL DETECTOR LOOPS AS SHOWN (WITHIN THE RESURFACING LIMITS)

CODE	QUANTITY	UNIT	ITEM
86600600	556	FOOT	DETECTOR LOOP, REPLACEMENT

FILE NAME =
 c:\pwork\PRD01\KANTHAPIL\XAT9C\081126

USER NAME = kenthapil
 1\trdoffic.legend.v7.dgn
 PLOT SCALE = 3/32" = 1" IN.
 PLOT DATE = 4/1/2009

DESIGNED - BCK
 DRAWN - BCK
 CHECKED - DAD
 DATE

REVISED -
 REVISED -
 REVISED -
 REVISED -

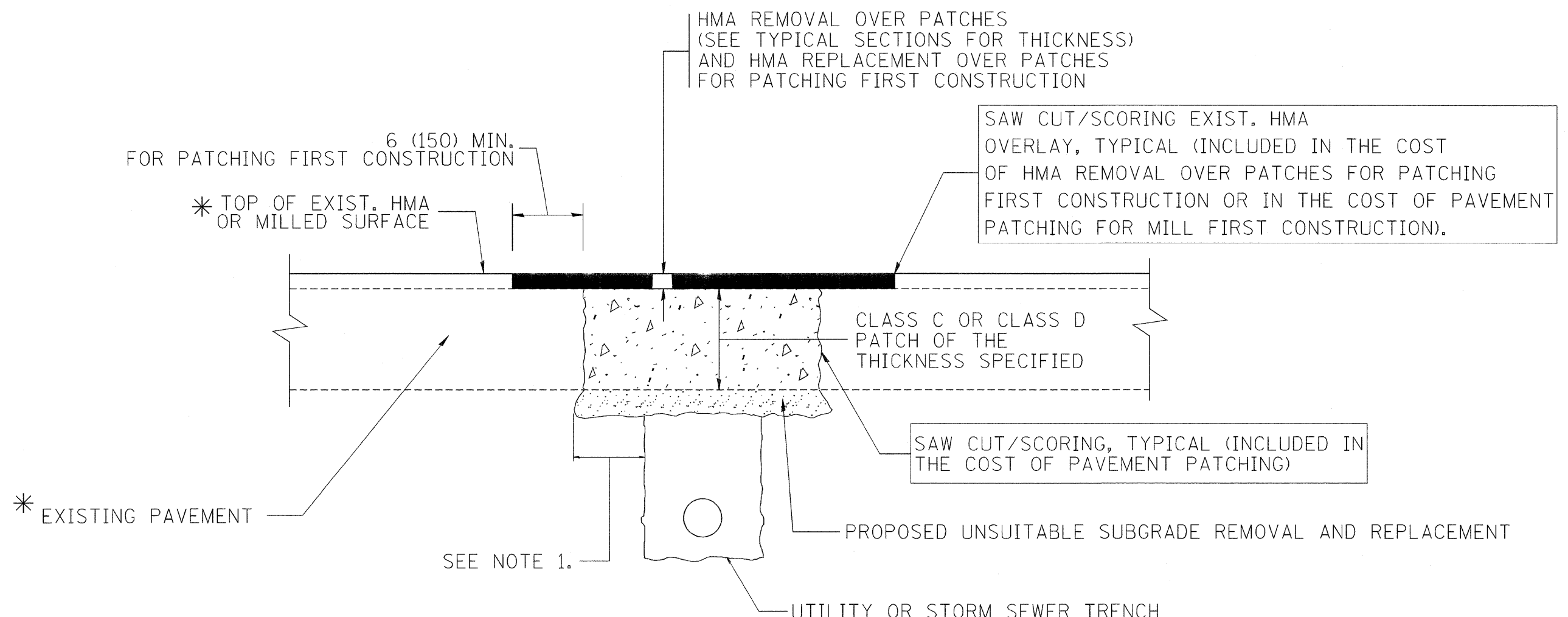
**STATE OF ILLINOIS
 DEPARTMENT OF TRANSPORTATION**

**DISTRICT ONE - DETECTOR LOOP REPLACEMENT
 ILL. ROUTE 56 @ EDLA RD.**

SCALE: NONE SHEET NO. OF SHEETS STA. TO STA.

F.A. RTE.	SECTION	COUNTY	TOTAL SHEETS	SHEET NO.
365	59 RS-3	DUPAGE	20	10

CONTRACT NO. 60J49
 FED. ROAD DIST. NO. ILLINOIS FED. AID PROJECT



* SEE TYPICAL SECTIONS FOR THICKNESS AND MATERIALS

NOTES:

1. THE WIDTH OF THE FULL DEPTH PATCH OVER A TRENCH SHALL BE 12 (300) WIDER ON EACH SIDE OF THE TRENCH.
2. FOR METHOD OF MEASUREMENT AND BASIS OF PAYMENT, SEE RECURRING SPECIAL PROVISION "PATCHING WITH HOT-MIX ASPHALT OVERLAY REMOVAL".

SEQUENCE OF CONSTRUCTION (PATCHING FIRST)

1. REMOVE THE EXISTING HMA MATERIAL OVER THE AREA TO BE PATCHED.
2. REMOVE AND REPLACE WITH CLASS C OR D PATCH.
3. REPLACE HMA MATERIAL OVER THE AREA TO BE PATCHED.

SEQUENCE OF CONSTRUCTION (MILLING FIRST)

1. MILL HMA FIRST IF THERE IS AT LEAST 4 1/2 INCHES OR MORE OF HMA MATERIAL ON TOP OF THE EXISTING PAVEMENT OR IF THE PAVEMENT IS FULL DEPTH HMA. A MINIMUM OF 2 INCHES OF HMA MATERIAL SHALL BE IN PLACE AFTER MILLING.
2. REMOVE AND REPLACE WITH FULL DEPTH CLASS D PATCHES TO TOP OF MILLED SURFACE.

ALL DIMENSIONS ARE IN INCHES (MILLIMETERS) UNLESS OTHERWISE SHOWN.

FILE NAME = c:\projects\diststd22x34\ba22.dgn	USER NAME = beuerdl	DESIGNED - R. SHAH	REVISED - A. ABBAS 04-27-98	STATE OF ILLINOIS DEPARTMENT OF TRANSPORTATION	PAVEMENT PATCHING FOR HMA SURFACED PAVEMENT			F.A. RTE.	SECTION	COUNTY	TOTAL SHEETS	SHEET NO.
	PLOT SCALE = 50.000' / IN.	DRAWN -	REVISED - R. BORO 01-01-07					365	59 RS-3	DUPAGE	20	11
PLOT DATE = 10/27/2008	CHECKED -	DATE - 10-25-94	REVISED - R. BORO 09-04-07	SCALE: NONE	SHEET NO. 1 OF 1 SHEETS	STA. TO STA.	BD400-04 (BD-22)					
	DATE -	REVISED - K. ENG 10-27-08		FED. ROAD DIST. NO. 1 ILLINOIS FED. AID PROJECT								

VARIABLE - TO MEET EXISTING DIMENSIONS AND FIELD CONDITIONS (SEE NOTE ②)

PROP. CONC. CURB OR CURB AND GUTTER REPLACEMENT IN ACCORDANCE WITH STATE STANDARD 606001. (SEE NOTE ②)

SAW CUT FULL DEPTH - INCLUDED IN THE COST OF SIDEWALK, DRIVEWAY OR MEDIAN SURFACE REMOVAL PAY ITEM.

SEE STATE STANDARD 606001
EXISTING OR PROPOSED HMA SURFACE (IF APPLICABLE)

18" (450) MAX.

1/4" (5) **

EXISTING SIDEWALK, DRIVEWAY, MEDIAN SURFACE, SOD OR GROUND.

PROPOSED SIDEWALK, DRIVEWAY PAVEMENT, MEDIAN SURFACE OR SODDING SALT TOLERANT WITH TOP SOIL, 4" (100) SOD RESTORATION (SEE NOTE ①).

EXISTING CONCRETE PAVEMENT, CONCRETE BASE COURSE OR FLEXIBLE PAVEMENT

3" (75) MIN.

SUITABLE BACKFILL MATERIAL (INCLUDED IN THE COST OF CURB OR CURB AND GUTTER REMOVAL AND REPLACEMENT)

* 3" (75) MINIMUM FROM TOP AND BOTTOM OF THE CONCRETE PAVEMENT OR BASE COURSE.

** IF THE FINAL SURFACE OF THE PAVEMENT IS CONCRETE, THE GUTTER IS TO BE FLUSH WITH THE PAVEMENT.

PROPOSED 3/4" (20) PREFORMED EXPANSION JOINT AT CONCRETE SIDEWALKS, DRIVEWAYS, AND MEDIANS. (INCLUDED IN THE COST OF CURB OR CURB AND GUTTER REMOVAL AND REPLACEMENT.)

NOTE: ① SIDEWALK, DRIVEWAY PAVEMENT OR MEDIAN SURFACE SHALL BE SIMILAR TO THE MATERIAL BEING REMOVED AND WILL BE PAID FOR SEPARATELY.

SODDING, SALT TOLERANT AND TOP SOIL, FURNISH AND PLACE 4" WILL BE PAID FOR SEPARATELY,

UNSUITABLE SUB-BASE MATERIAL TO BE REMOVED, IF DIRECTED BY THE ENGINEER, SHALL BE REPLACED WITH EITHER SUB-BASE GRANULAR MATERIAL, TYPE B OR ADDITIONAL THICKNESS OF CONCRETE.

② FERTILIZER FOR THE PLACEMENT OF THE SOD IS NOT REQUIRED

REMOVAL AND REPLACEMENT 4" (100) OR LESS IS INCLUDED IN THE COST OF CURB OR CURB AND GUTTER REMOVAL AND REPLACEMENT.

③ CURB OR CURB AND GUTTER REPLACEMENT SHALL MATCH THE SHAPE OF THE EXISTING CURB OR CURB AND GUTTER UNLESS OTHERWISE SPECIFIED.

REMOVAL AND REPLACEMENT IN EXCESS OF 4" (100) WILL BE PAID FOR IN ACCORDANCE WITH ARTICLE 109.04 OF THE STANDARD SPECIFICATIONS.

④ FOR CURB OR CURB AND GUTTER REMOVAL AND REPLACEMENT ADJACENT TO FLEXIBLE PAVEMENT DELETE EPOXY COATED TIE BARS.

⑤ LONGITUDINAL BARS, IF ENCOUNTERED IN THE EXISTING CURB OR CURB AND GUTTER, ARE NOT TO BE REPLACED. CUTTING AND REMOVING LONGITUDINAL BARS SHALL BE INCLUDED IN THE COST OF CURB OR CURB AND GUTTER REMOVAL AND REPLACEMENT.

PROPOSED #6 (20) EPOXY COATED TIE BARS 24" (600) LONG AT 24" (600) CENTERS WILL NOT BE PAID FOR SEPARATELY. DELETE EPOXY COATED TIE BARS IF EXISTING TIE BARS ARE USUABLE AS DETERMINED BY THE ENGINEER. (SEE NOTE ③).

⑥ THE COST OF HMA SURFACE REMOVAL IN THE EXISTING GUTTER FLAG SHALL BE INCLUDED IN THE COST OF THE CURB AND GUTTER REMOVAL AND REPLACEMENT.

BASIS OF PAYMENT:

THIS WORK WILL BE PAID FOR AT THE CONTRACT UNIT PRICE PER FOOT (METER) FOR "CURB REMOVAL AND REPLACEMENT" OR "COMBINATION CONCRETE CURB AND GUTTER REMOVAL AND REPLACEMENT".

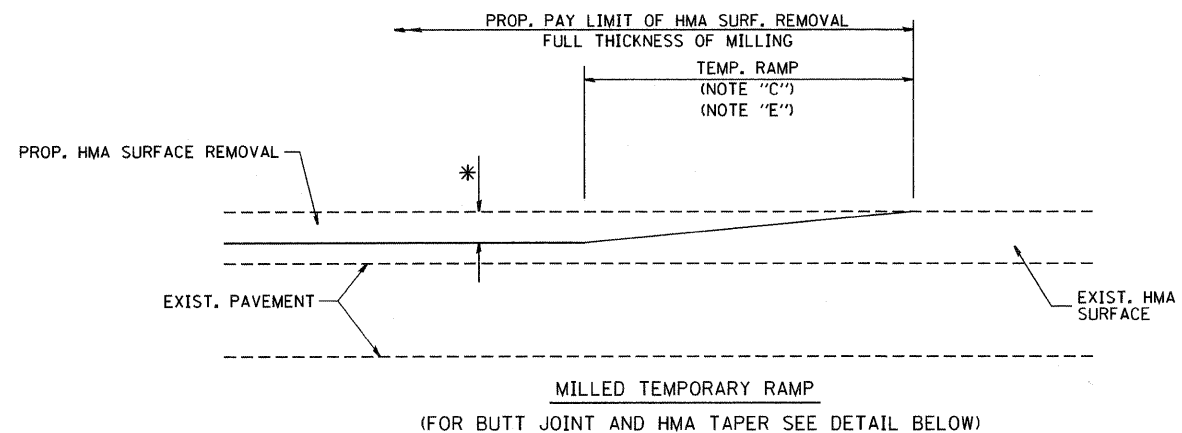
⑦ THE REMOVAL AND REPLACEMENT OF THE EXISTING CURB OR CURB AND GUTTER SHALL BE DONE IN ACCORDANCE WITH THE APPLICABLE PORTIONS OF SECTION 440 AND 606 OF THE STANDARD SPECIFICATIONS.

⑧ THE LOCATIONS OF REMOVAL AND REPLACEMENT OF EXISTING CURB OR CURB AND GUTTER SHALL BE DETERMINED BY THE RESIDENT ENGINEER AT THE TIME OF CONSTRUCTION.

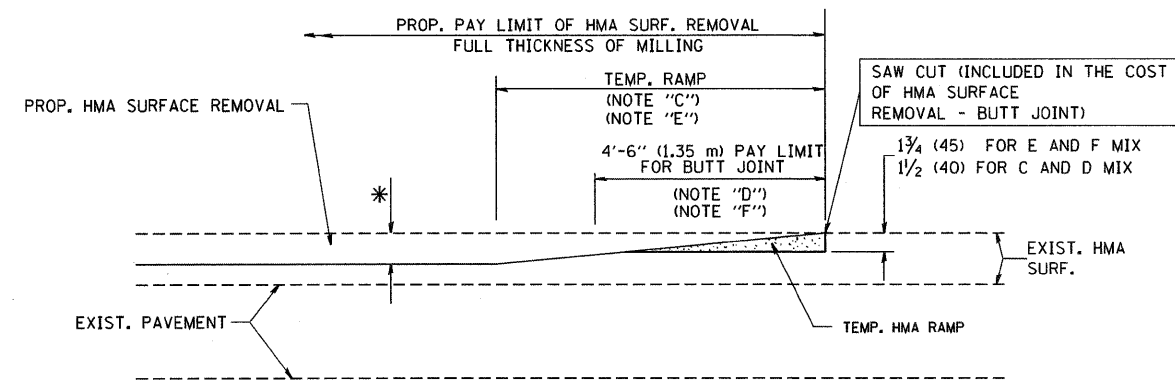
CURB OR CURB AND GUTTER REMOVAL AND REPLACEMENT

ALL DIMENSIONS ARE IN INCHES (MILLIMETERS) UNLESS OTHERWISE SHOWN.

FILE NAME =	USER NAME = drvakosgn	DESIGNED - A. HOUSEH	REVISED - R. SHAH 10-03-96	STATE OF ILLINOIS DEPARTMENT OF TRANSPORTATION	CURB OR CURB AND GUTTER REMOVAL AND REPLACEMENT	F.A. RTE.	SECTION	COUNTY	TOTAL SHEETS	SHEET NO.
c:\pw_work\pwwork\drvakosgn\10106315\bc24.dgn	DRAWN -	REVISED - A. ABBAS 03-21-97	REVISED - M. GOMEZ 01-22-01			3524	19-6-RS	COOK	20	12
PLOT SCALE = 50,000' / IN.	CHECKED -	REVISED - R. BORO 12-15-09				BD600-06 (BD-24)		CONTRACT NO. 60J89		
PLOT DATE = 12/15/2009	DATE - 03-11-94					SCALE: NONE		SHEET NO. 1 OF 1 SHEETS		STA. TO STA.
						FED. ROAD DIST. NO. 1 ILLINOIS FED. AID PROJECT				

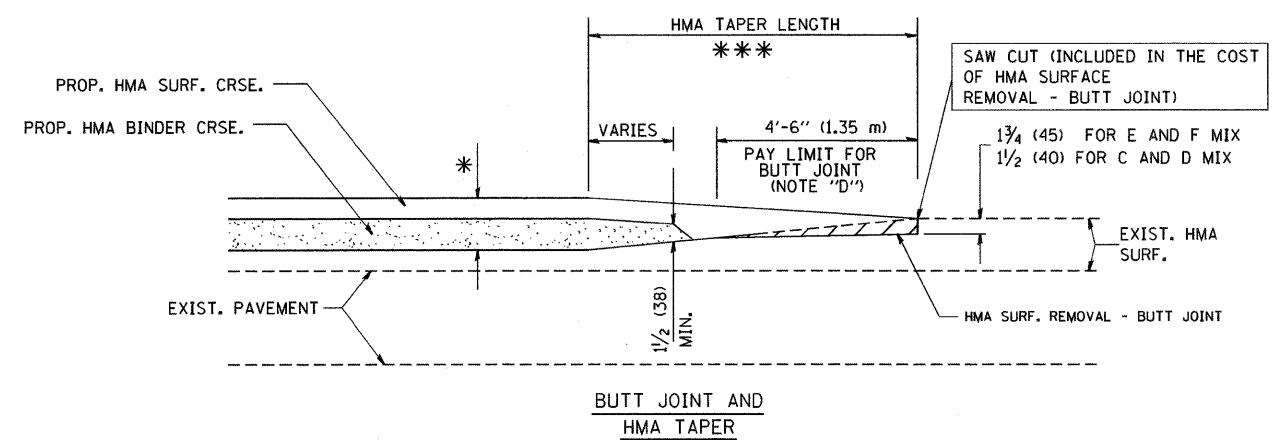


OPTION 1

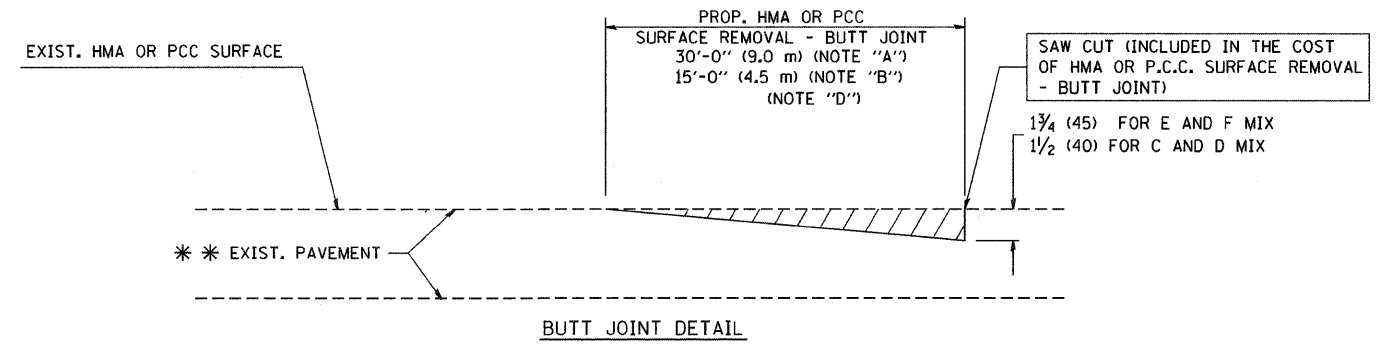


OPTION 2
HMA CONSTRUCTED TEMPORARY RAMP
(FOR BUTT JOINT AND HMA TAPER SEE DETAIL BELOW)

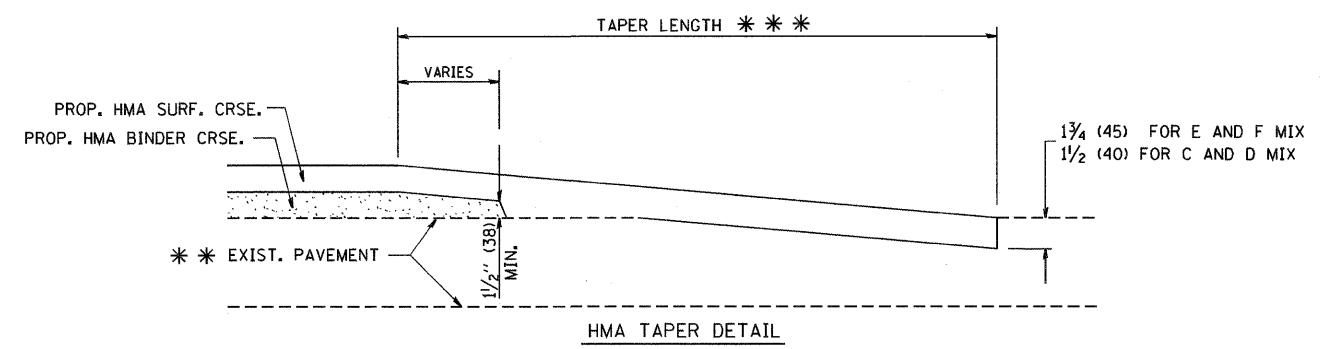
TYPICAL TEMPORARY RAMP



TYPICAL BUTT JOINT AND HMA TAPER FOR MILLING AND RESURFACING



BUTT JOINT DETAIL



HMA TAPER DETAIL

TYPICAL BUTT JOINT AND HMA TAPER FOR RESURFACING ONLY

*** PC CONCRETE, HMA OR HMA RESURFACED PAVEMENT.

NOTES

- A: MAINLINE ROADWAYS AND MAJOR SIDE ROADS.
 - B: MINOR SIDE ROADS.
 - C: THE TEMP. RAMP SHALL BE CONSTRUCTED IMMEDIATELY UPON REMOVAL OF THE EXISTING HMA SURFACE.
 - D: THE BUTT JOINT SHALL BE CONSTRUCTED IMMEDIATELY PRIOR TO PLACING THE PROPOSED HMA COURSES.
 - E: TAPER THE TEMP. RAMP AT A RATE OF 3'-0" (900 mm) PER 1 INCH (25 mm) OF MILLING THICKNESS.
 - F: INSTALLATION AND REMOVAL OF THE 4'-6" (1.35 m) TEMP. RAMP IS INCLUDED IN COST OF HMA SURFACE REMOVAL - BUTT JOINT
 - G: SEE ARTICLE 406.08 AND 406.14 OF THE STANDARD SPECIFICATIONS FOR "HMA AND/OR PCC SURFACE REMOVAL, BUTT JOINT".
- * SEE TYPICAL SECTIONS FOR MILLING THICKNESS.
- *** 20'-0" (6.1 m) PER 1 (25) RESURFACING (NOTE "A")
10'-0" (3.0 m) PER 1 (25) RESURFACING (NOTE "B")

BASIS OF PAYMENT:

THE BUTT JOINT WILL BE PAID FOR AT THE CONTRACT UNIT PRICE PER SQUARE YARD (SQUARE METER) FOR "HOT-MIX ASPHALT SURFACE REMOVAL - BUTT JOINT" OR FOR "PORTLAND CEMENT CONCRETE SURFACE REMOVAL - BUTT JOINT".

ALL DIMENSIONS ARE IN INCHES (MILLIMETERS) UNLESS OTHERWISE SHOWN.

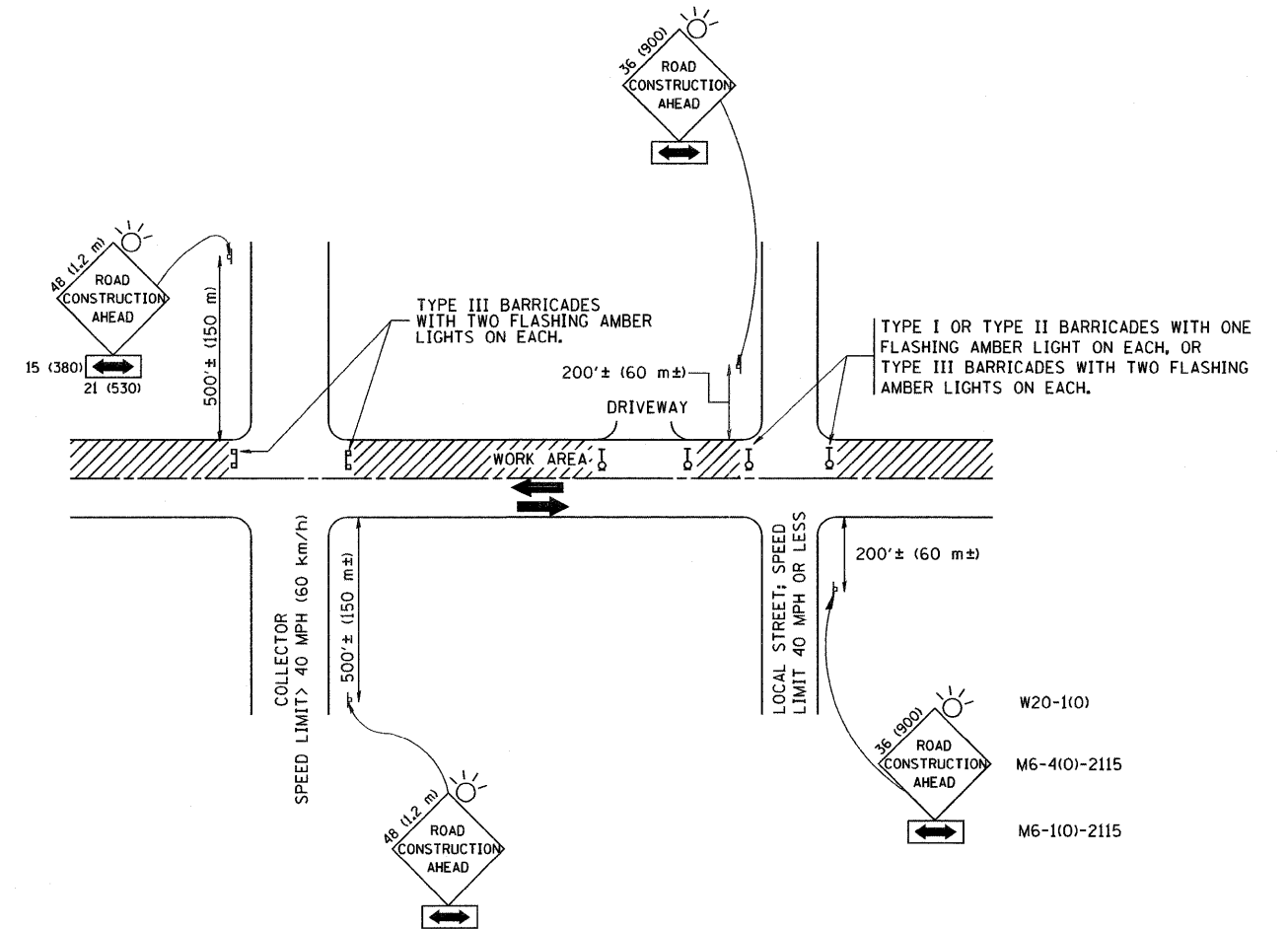
FILE NAME =	USER NAME = geglionobt
W:\diststd\22x34\bd32.dgn	

DESIGNED - M. DE YONG	REVISED - R. SHAH 10-25-94
DRAWN -	REVISED - A. ABBAS 03-21-97
PLOT SCALE = 50.0000' / IN.	REVISED - M. GOMEZ 04-06-01
CHECKED -	REVISED - R. BORO 01-01-07
PLOT DATE = 1/4/2008	DATE - 06-13-90

**STATE OF ILLINOIS
DEPARTMENT OF TRANSPORTATION**

BUTT JOINT AND HMA TAPER DETAILS	
SCALE: NONE	SHEET NO. 1 OF 1 SHEETS STA. TO STA.

F.A. RTE.	SECTION	COUNTY	TOTAL SHEETS	SHEET NO.
365	59 RS-3	DUPAGE	20	13
BD400-05 BD32			CONTRACT NO. 60J49	
FED. ROAD DIST. NO. 1 ILLINOIS FED. AID PROJECT				



TRAFFIC CONTROL AND PROTECTION FOR SIDE ROADS, INTERSECTIONS, AND DRIVEWAYS

NOTES:

A. FOR NO LANE RESTRICTION ON THE SIDE ROAD OR DRIVEWAYS

1. SIDE ROAD WITH A SPEED LIMIT OF 40 MPH (60 km/h) OR LESS AS SHOWN ON THE DRAWING AND AS DIRECTED BY THE ENGINEER:
 - a) ONE ROAD CONSTRUCTION AHEAD SIGN 36 x 36 (900x900) WITH A FLASHER AND FLAG MOUNTED ON IT APPROXIMATELY 200' (60 m) IN ADVANCE OF THE MAIN ROUTE.
 - b) THE CLOSED PORTION OF THE MAIN ROUTE SHALL BE PROTECTED BY BLOCKING WITH TYPE I, TYPE II OR TYPE III BARRICADES, 1/3 OF THE CROSS SECTION OF THE CLOSED PORTION.
2. SIDE ROAD WITH A SPEED LIMIT GREATER THAN 40 MPH (60 km/h) AS SHOWN ON THE DRAWING AND AS DIRECTED BY THE ENGINEER:
 - a) ONE ROAD CONSTRUCTION AHEAD SIGN 48 x 48 (1.2 m x 1.2 m) WITH A FLASHER MOUNTED ON IT APPROXIMATELY 500' (150 m) IN ADVANCE OF THE MAIN ROUTE.
 - b) THE CLOSED PORTION OF THE MAIN ROUTE SHALL BE PROTECTED BY BLOCKING WITH TYPE III BARRICADES, 1/2 OF THE CROSS SECTION OF THE CLOSED PORTION.
3. WHEN THE SIDE ROAD LIES BETWEEN THE BEGINNING OF THE MAINLINE SIGNING AND THE WORK ZONE, A SINGLE HEADED ARROW (M6-1) SHALL BE USED IN LIEU OF THE DOUBLE HEADED ARROW (M6-4).

B. FOR A LANE CLOSURE ON A SIDE ROAD OR DRIVEWAY:

USE APPLICABLE PORTIONS OF THE TYPICAL APPLICATION OF TRAFFIC CONTROL DEVICES (STD. 701501, STD. 701606 OR THE APPROPRIATE STANDARD). THE SPACING OF SIGNS AND BARRICADES SHALL BE ADJUSTED FOR FIELD CONDITIONS AS DIRECTED BY THE ENGINEER. THE DIRECTIONAL ARROW SHALL BE COVERED OR REMOVED WHEN NO LONGER CONSISTENT WITH THE SIDE ROAD LANE CLOSURE.

C. ADVANCE WARNING SIGNS ARE TO BE OMITTED ON DRIVEWAY UNLESS OTHERWISE NOTED.

D. THE TRAFFIC CONTROL AND PROTECTION FOR SIDE ROADS, INTERSECTIONS, AND DRIVEWAYS SHALL BE INCIDENTAL TO THE COST OF SPECIFIED TRAFFIC CONTROL STANDARDS OR ITEMS.

All dimensions are in millimeters (inches) unless otherwise shown.

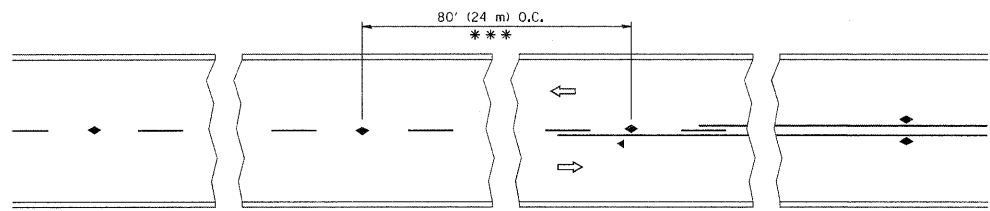
FILE NAME = M:\diststd\22x34\tcl0.dgn	USER NAME = geglienobt	DESIGNED - LHA	REVISED - J. OBERLE 10-18-95
		DRAWN -	REVISED - A. HOUSEH 03-06-96
	PLOT SCALE = 50.000' / IN.	CHECKED -	REVISED - A. HOUSEH 10-15-96
	PLOT DATE = 1/4/2008	DATE - 06-89	REVISED - T. RAMMACHER 01-06-00

STATE OF ILLINOIS
DEPARTMENT OF TRANSPORTATION

TRAFFIC CONTROL AND PROTECTION FOR
SIDE ROADS, INTERSECTIONS, AND DRIVEWAYS

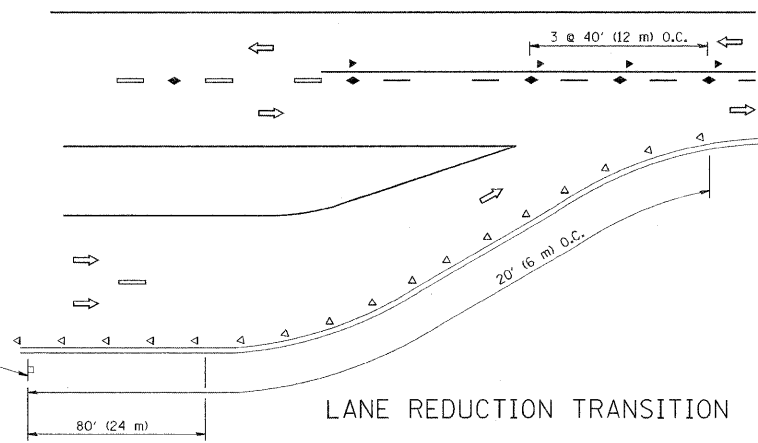
SCALE: NONE SHEET NO. 1 OF 1 SHEETS STA. TO STA.

F.A. RTE.	SECTION	COUNTY	TOTAL SHEETS	SHEET NO.
365	59 RS-3	DUPAGE	20	14
TC-10			CONTRACT NO. 60J49	
FED. ROAD DIST. NO. 1 ILLINOIS FED. AID PROJECT				

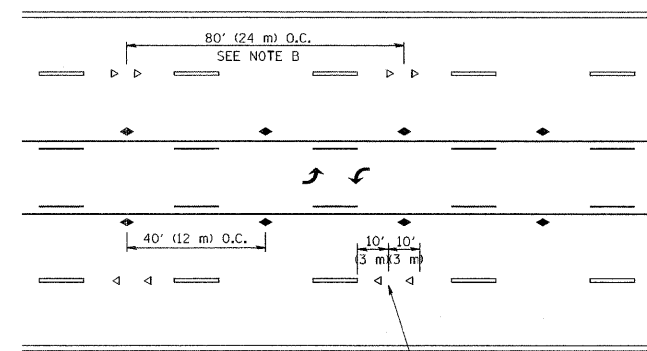


*** REDUCE TO 40' (12 m) O.C. ON CURVES WITH POSTED OR ADVISORY SPEED 45 M.P.H. (70 km/h) OR LESS.

TWO-LANE/TWO-WAY

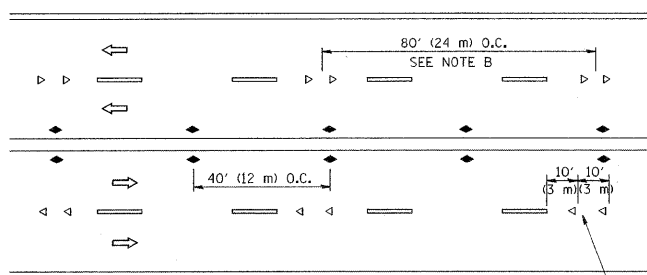


LANE REDUCTION TRANSITION

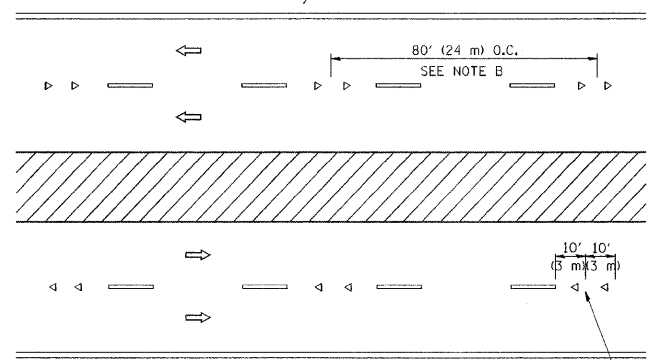


SEE NOTE A

TWO-WAY LEFT TURN



MULTI-LANE/UNDIVIDED



MULTI-LANE/DIVIDED

GENERAL NOTES

1. MARKERS USED WITH DASHED LINES SHALL BE CENTERED IN THE GAP BETWEEN SEGMENTS.
2. MARKERS USED ADJACENT TO SOLID LINES SHALL BE OFFSET 2 TO 3 (50 TO 75) TOWARD TRAFFIC AS SHOWN.
3. MARKERS THROUGH TANGENTS LESS THAN 500' (150 m) IN LENGTH BETWEEN CURVES SHALL BE INSTALLED AT THE LESSER OF THE TWO CURVE SPACINGS.

SYMBOLS

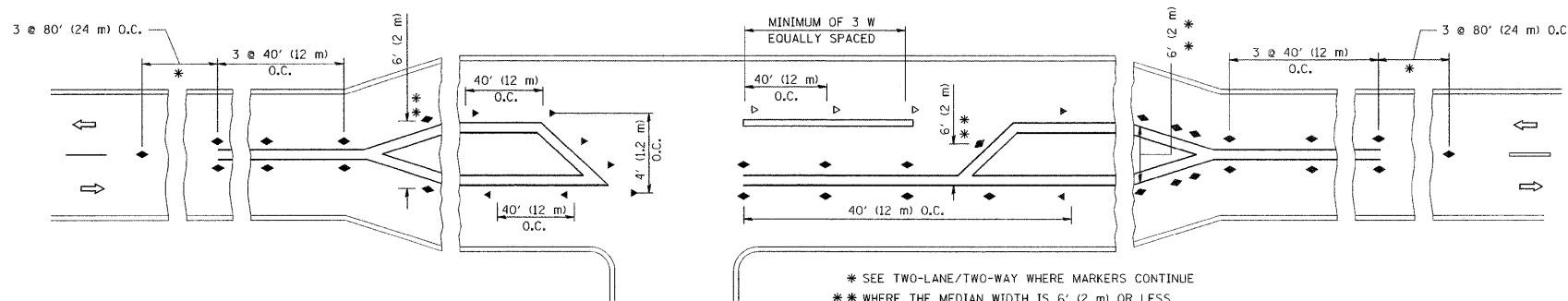
- YELLOW STRIPE
- WHITE STRIPE
- ◀ ONE-WAY AMBER MARKER
- ◁ ONE-WAY CRYSTAL MARKER (W/O)
- ◆ TWO-WAY AMBER MARKER

LANE MARKER NOTES

- A. USE DOUBLE LANE LINE MARKERS SPACED AS SHOWN.
- B. REDUCE TO 40' (12 m) O.C. ON CURVES WHERE ADVISORY SPEEDS ARE 10 M.P.H (20 km/h) LOWER THAN POSTED SPEEDS.

DESIGN NOTES

1. DOUBLE LANE LINE MARKERS SHALL BE USED UNLESS SPECIFIED OTHERWISE.
2. EXCEPT AS SHOWN ON THE LANE REDUCTION TRANSITION AND FREEWAY EXIT RAMP DETAIL, MARKERS ARE NOT TO BE SPECIFIED ON RIGHT EDGE LINES.
3. THE EXACT MARKER LIMITS, SPACING, AND COLOR SHOULD BE INCLUDED IN THE PLANS.
4. MARKERS SHOULD NOT BE USED ALONGSIDE CURBS EXCEPT FOR EXTREMELY SHORT SECTIONS OF CURBS WHERE NOT MORE THAN TWO MARKERS WOULD BE INVOLVED.

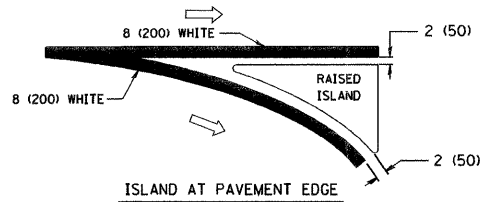
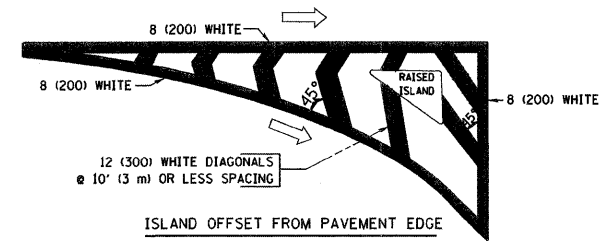
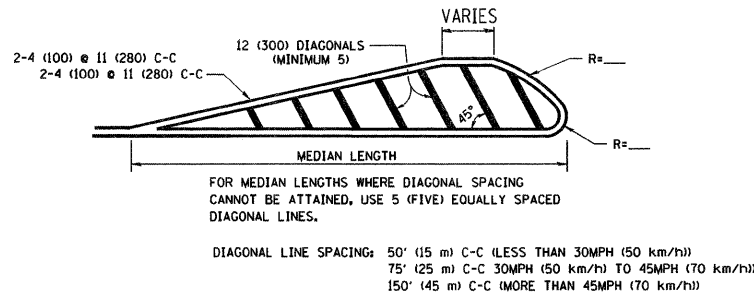
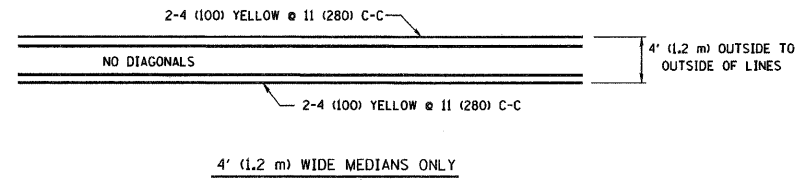
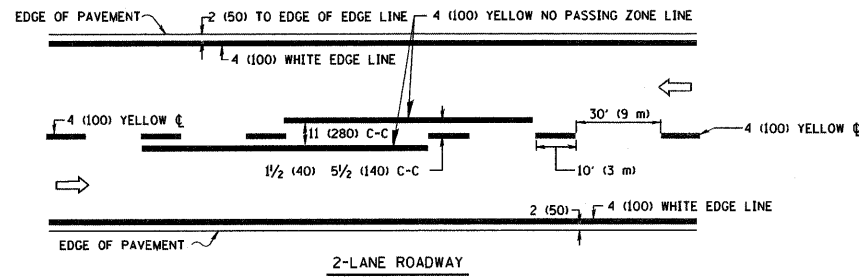


* SEE TWO-LANE/TWO-WAY WHERE MARKERS CONTINUE
 ** WHERE THE MEDIAN WIDTH IS 6' (2 m) OR LESS USE TWO-WAY MARKERS.

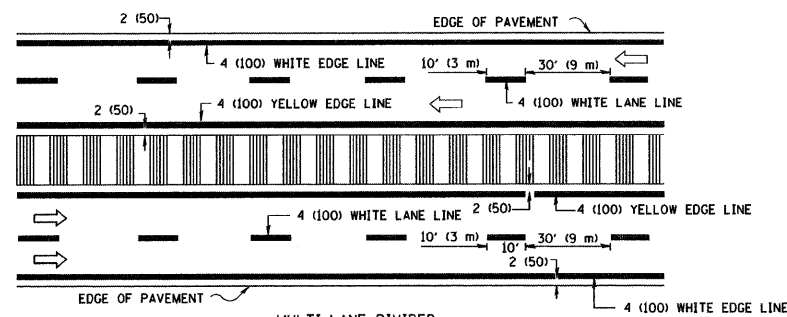
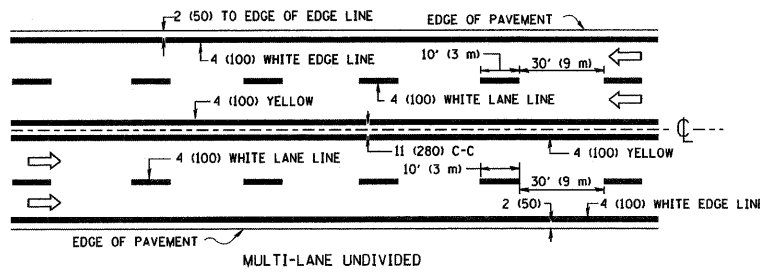
LEFT TURN

All dimensions are in inches (millimeters) unless otherwise shown.

FILE NAME =	USER NAME = drvakosgn	DESIGNED -	REVISED - T. RAMMACHER 09-19-94	STATE OF ILLINOIS DEPARTMENT OF TRANSPORTATION	TYPICAL APPLICATIONS RAISED REFLECTIVE PAVEMENT MARKERS (SNOW-PLOW RESISTANT)			F.A. RTE.	SECTION	COUNTY	TOTAL SHEETS	SHEET NO.
es:\pw_work\pwidot\drvakosgn\d0108315\td.lldgn		DRAWN -	REVISED - T. RAMMACHER 03-12-99		365	59 RS-3	DUPAGE	20	15			
	PLOT SCALE = 50.000' / IN.	CHECKED -	REVISED - T. RAMMACHER 01-06-00		TC-11			CONTRACT NO. 60J49				
	PLOT DATE = 9/9/2009	DATE -	REVISED - C. JUCIUS 09-09-09		SCALE: NONE	SHEET NO. 1 OF 1 SHEETS	STA. TO STA.	FED. ROAD DIST. NO. 1 ILLINOIS FED. AID PROJECT				

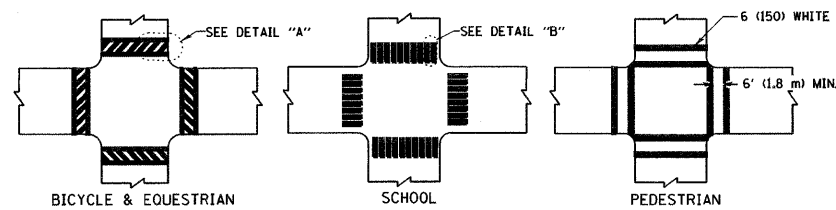


TYPICAL ISLAND MARKING

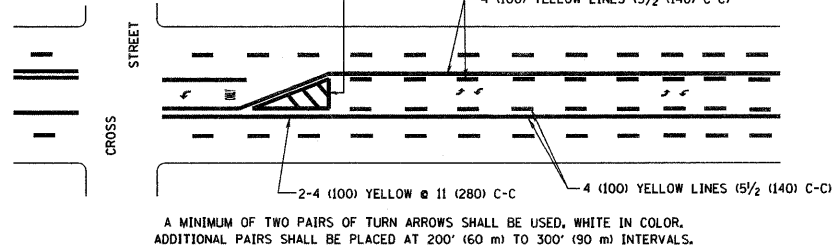


NOTE: MEDIANS WITH BARRIER CURB DO NOT REQUIRE AN EDGE LINE

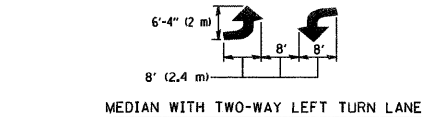
TYPICAL LANE AND EDGE LINE MARKING



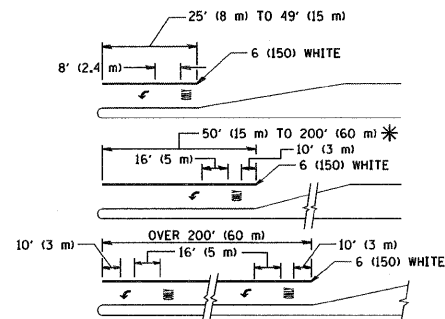
TYPICAL CROSSWALK MARKING



TYPICAL PAINTED MEDIAN MARKING



TYPICAL PAINTED MEDIAN MARKING



FULL SIZE LETTERS 8' (2.4 m) AND ARROWS SHALL BE USED.
AREA = 15.6 SQ. FT. (1.5 m²) AREA = 20.8 SQ. FT. (1.9 m²)

* TURN LANES IN EXCESS OF 400' (120 m) IN LENGTH MAY HAVE AN ADDITIONAL SET OF ARROW - "ONLY" INSTALLED MIDWAY BETWEEN THE OTHER TWO SETS OF ARROW - "ONLY".

TYPICAL LEFT (OR RIGHT) TURN LANE

TYPICAL TURN LANE MARKING

TYPE OF MARKING	WIDTH OF LINE	PATTERN	COLOR	SPACING / REMARKS
CENTERLINE ON 2 LANE PAVEMENT	4 (100)	SKIP-DASH	YELLOW	10' (3 m) LINE WITH 30' (9 m) SPACE
CENTERLINE ON MULTI-LANE UNDIVIDED PAVEMENT	2 @ 4 (100)	SOLID	YELLOW	11 (280) C-C
NO PASSING ZONE LINES FOR ONE DIRECTION	4 (100)	SOLID	YELLOW	5/2 (140) C-C FROM SKIP-DASH CENTERLINE
NO PASSING ZONE LINES FOR BOTH DIRECTIONS	2 @ 4 (100)	SOLID	YELLOW	11 (280) C-C OMIT SKIP-DASH CENTERLINE BETWEEN
LANE LINES	4 (100) 5 (125) ON FREEWAYS	SKIP-DASH SKIP-DASH	WHITE WHITE	10' (3 m) LINE WITH 30' (9 m) SPACE
DOTTED LINES (EXTENSIONS OF CENTER, LANE OR TURN LANE MARKINGS)	SAME AS LINE BEING EXTENDED	SKIP-DASH	SAME AS LINE BEING EXTENDED	2' (600) LINE WITH 6' (1.8 m) SPACE
EDGE LINES	4 (100)	SOLID	YELLOW-LEFT WHITE-RIGHT	OUTLINE MOUNTABLE MEDIANS IN YELLOW; EDGE LINES ARE NOT USED NEXT TO BARRIER CURB
TURN LANE MARKINGS	6 (150) LINE; FULL SIZE LETTERS & SYMBOLS (8' (2.4m))	SOLID	WHITE	SEE TYPICAL TURN LANE MARKING DETAIL
TWO WAY LEFT TURN MARKING	2 @ 4 (100) EACH DIRECTION	SKIP-DASH AND SOLID	YELLOW	10' (3 m) LINE WITH 30' (9 m) SPACE FOR SKIP-DASH; 5/2 (140) C-C BETWEEN SOLID LINE AND SKIP-DASH LINE
	8' (2.4m) LEFT ARROW	IN PAIRS	WHITE	SEE TYPICAL TWO-WAY LEFT TURN MARKING DETAIL
CROSSWALK LINES (PEDESTRIAN) A. DIAGONALS (BIKE & EQUESTRIAN) B. LONGITUDINAL BARS (SCHOOL)	2 @ 6 (150) 12 (300) @ 45° 12 (300) @ 90°	SOLID SOLID SOLID	WHITE WHITE WHITE	NOT LESS THAN 6' (1.8 m) APART 2' (600) APART SEE TYPICAL CROSSWALK MARKING DETAILS.
STOP LINES	24 (600)	SOLID	WHITE	PLACE 4' (1.2 m) IN ADVANCE OF AND PARALLEL TO CROSSWALK. IF PRESENT, OTHERWISE, PLACE AT DESIRED STOPPING POINT, PARALLEL TO CROSSROAD CENTERLINE, WHERE POSSIBLE
PAINTED MEDIANS	2 @ 4 (100) WITH 12 (300) DIAGONALS @ 45° NO DIAGONALS USED FOR 4' (1.2 m) WIDE MEDIANS	SOLID	YELLOW; TWO WAY TRAFFIC WHITE; ONE WAY TRAFFIC	11 (280) C-C FOR THE DOUBLE LINE SEE TYPICAL PAINTED MEDIAN MARKING.
GORE MARKING AND CHANNELIZING LINES	8 (200) WITH 12 (300) DIAGONALS @ 45°	SOLID	WHITE	DIAGONALS: 15' (4.5 m) C-C (LESS THAN 30MPH (50 km/h)) 20' (6 m) C-C 30MPH (50 km/h) TO 45MPH (70 km/h) 30' (9 m) C-C (OVER 45MPH (70 km/h))
RAILROAD CROSSING	24 (600) TRANSVERSE LINES; "RR" IS 6' (1.8 m) LETTERS; 16 (400) LINE FOR "X"	SOLID	WHITE	SEE STATE STANDARD 780001 AREA OF: "R"=3.6 SQ. FT. (0.33 m ²) EACH "X"=54.0 SQ. FT. (5.0 m ²)
SHOULDER DIAGONALS	12 (300) @ 45°	SOLID	WHITE - RIGHT YELLOW - LEFT	50' (15 m) C-C (LESS THAN 30MPH (50 km/h)) 75' (25 m) C-C (30 MPH (50 km/h) TO 45MPH (70 km/h)) 150' (45 m) C-C (OVER 45MPH (70 km/h))

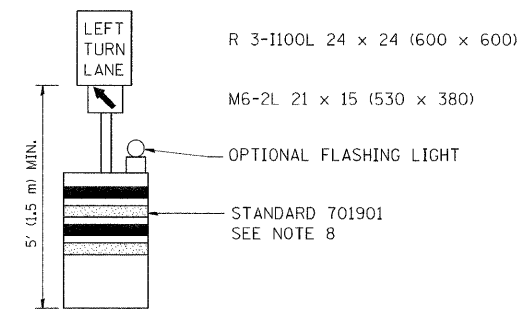
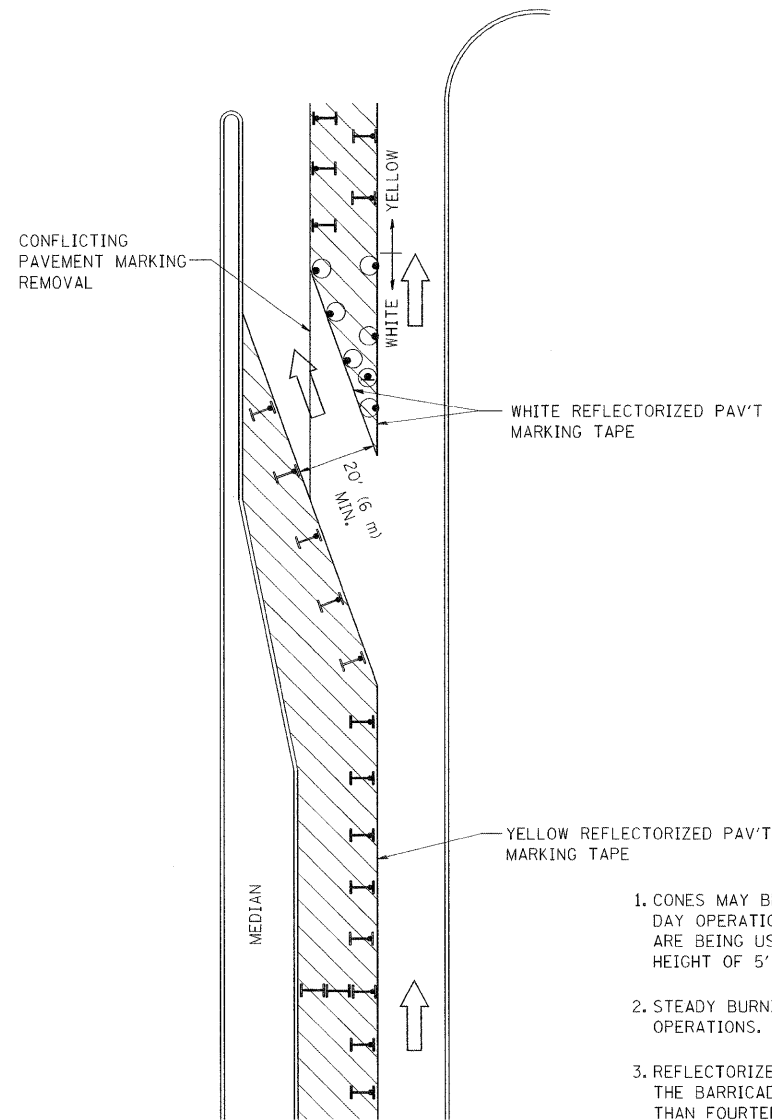
FOR FURTHER DETAILS ON PAVEMENT MARKING REFER TO STANDARD SPECIFICATIONS FOR ROAD AND BRIDGE CONSTRUCTION AND STATE STANDARD 780001.

All dimensions are in inches (millimeters) unless otherwise shown.

FILE NAME = W:\diststd\22x34\tcl3.dgn	USER NAME = geglianobt	DESIGNED - EVERS	REVISED - T. RAMMACHER 10-27-94
		DRAWN - A. HOUSEH 10-09-96	REVISED - A. HOUSEH 10-09-96
		PLOT SCALE = 50.000 "/ IN.	REVISOR - A. HOUSEH 10-17-96
		CHECKED - A. HOUSEH 10-17-96	REVISOR - T. RAMMACHER 01-06-00
		PLOT DATE = 1/4/2008	DATE - 03-19-90

STATE OF ILLINOIS
DEPARTMENT OF TRANSPORTATION

DISTRICT ONE		F.A. RTE.	SECTION	COUNTY	TOTAL SHEETS	SHEET NO.
TYPICAL PAVEMENT MARKINGS		365	59 RS-3	DUPAGE	20	16
SCALE: NONE		SHEET NO. 1 OF 1 SHEETS		STA.	TO STA.	
		TC-13		CONTRACT NO. 60J49		
FED. ROAD DIST. NO. 1 ILLINOIS FED. AID PROJECT						

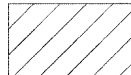
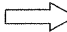



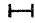


GENERAL NOTES

1. CONES MAY BE SUBSTITUTED FOR BARRICADES OR DRUMS AT HALF THE SPACING DURING DAY OPERATIONS. CONES SHALL BE A MINIMUM OF 28 (710) IN HEIGHT. WHEN CONES ARE BEING USED, THE "LEFT TURN LANE" SIGN MAY BE SKID MOUNTED AT A MINIMUM HEIGHT OF 5' (1.5 m).
2. STEADY BURNING LIGHTS WILL NOT BE REQUIRED ON BARRICADES OR DRUMS FOR DAY OPERATIONS. ALL LIGHTS SHALL BE MONODIRECTIONAL.
3. REFLECTORIZED TEMPORARY PAVEMENT MARKING TAPE SHALL BE PLACED THROUGHOUT THE BARRICADED AREA OF EACH TURN BAY WHERE THE CLOSURE TIME IS GREATER THAN FOURTEEN DAYS.
4. THIS APPLICATION ALSO APPLIES WHEN WORK IS BEING PERFORMED IN THE RIGHT LANE(S) AND THE RIGHT TURN BAY IS TO REMAIN OPEN. UNDER THIS CONDITION, "RIGHT TURN LANE" R3-100 24 x 24 (600 x 600) AND M6-2R 21 x 15 (530 x 380) SHALL BE USED.
5. THESE CONTROLS SHALL SUPPLEMENT MAINLINE TRAFFIC CONTROL FOR LANE CLOSURES.
6. LONGITUDINAL DIMENSIONS MAY BE ADJUSTED TO FIT FIELD CONDITIONS.
7. FORM OPER 725 IS REQUIRED.
8. IF A DRUM OR TYPE II BARRICADE WITH AN ATTACHED SIGN PANEL WHICH MEETS NCHRP 350 REQUIREMENTS IS NOT AVAILABLE, THE SIGNS SHALL BE MOUNTED, ABOVE THE BARRICADES, ON SEPARATE SIGNS SUPPORTS THAT MEET NCHRP 350 REQUIREMENTS.
9. TRAFFIC CONTROL AND PROTECTION AT TURN BAYS (TO REMAIN OPEN TO TRAFFIC) SHALL BE INCLUDED IN THE COST SPECIFIED TRAFFIC CONTROL STANDARDS OR ITEMS.

All dimensions are in inches (millimeters) unless otherwise shown.

LEGEND

-  WORK AREA
-  LANE OPEN TO TRAFFIC
-  TYPE I OR II BARRICADE WITH STEADY BURN LIGHT
-  DRUM WITH STEADY BURN LIGHT
-  DRUM WITH SIGN (WITH OPTIONAL FLASHING LIGHT) SEE DETAIL
-  TYPE I OR II CHECK BARRICADE WITH FLASHING LIGHT

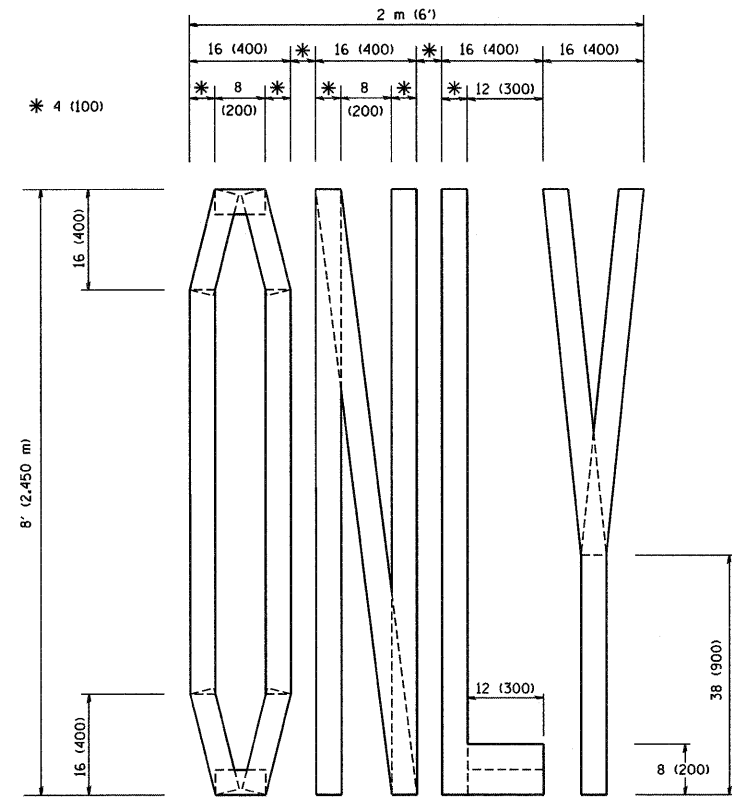
FILE NAME =	USER NAME = drivakosgn	REVISED - T. RAMMACHER 09-08-94	REVISED - R. BORO 09-14-09
ct:\pw_work\p\IDOT\DRIVAKOSGN\d010831514.dgn		REVISED - A. HOUSEH 11-07-95	REVISED -
	PLOT SCALE = 49.9999' / IN.	REVISED - A. HOUSEH 10-12-96	REVISED -
	PLOT DATE = 9/14/2009	REVISED - T. RAMMACHER 01-06-00	REVISED -

**STATE OF ILLINOIS
DEPARTMENT OF TRANSPORTATION**

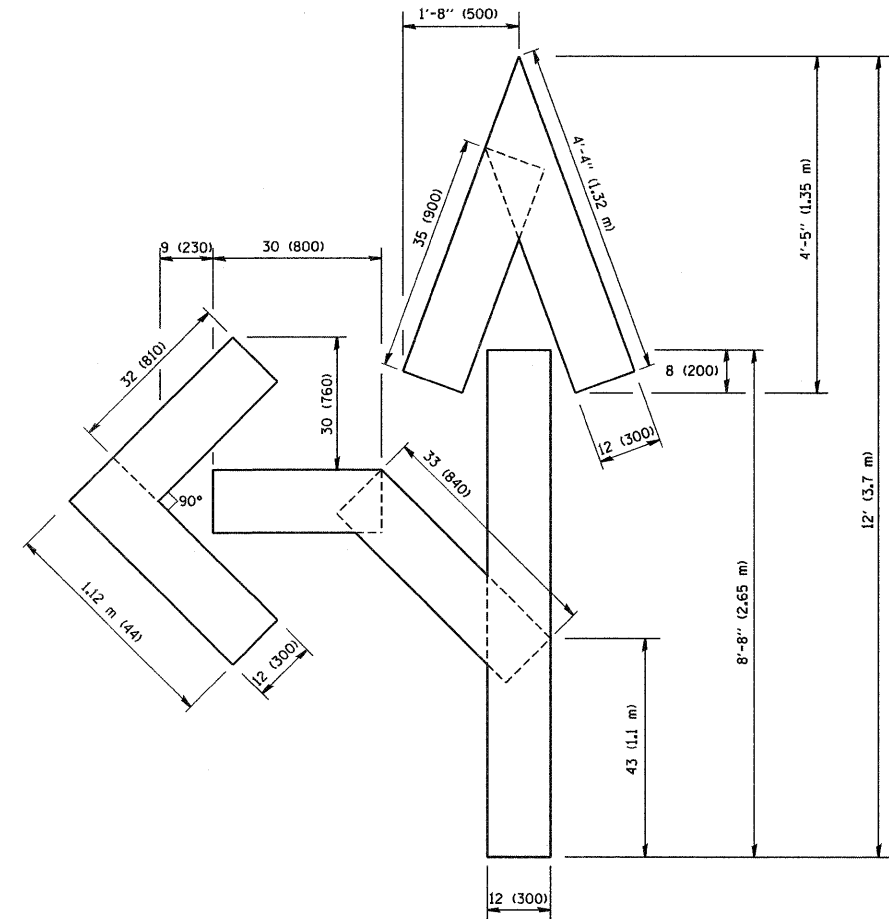
**TRAFFIC CONTROL AND PROTECTION AT TURN BAYS
(TO REMAIN OPEN TO TRAFFIC)**

SCALE: NONE SHEET NO. 1 OF 1 SHEETS STA. TO STA.

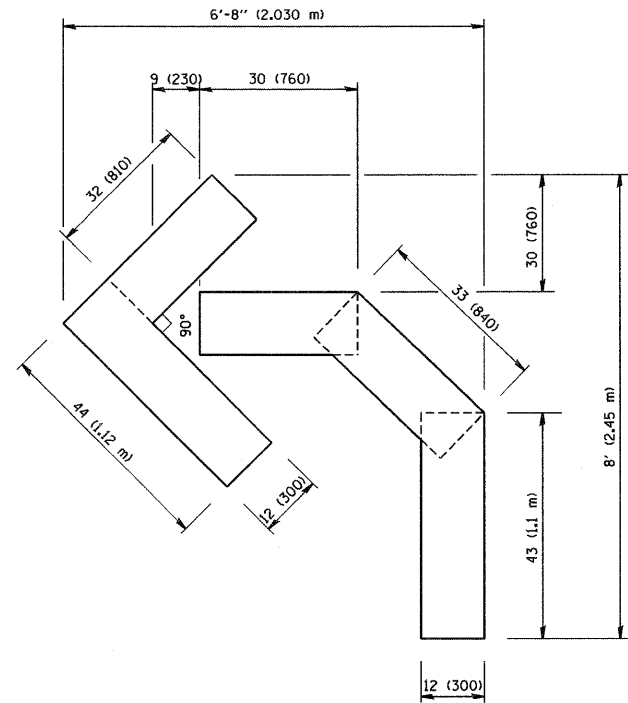
F.A. RTE.	SECTION	COUNTY	TOTAL SHEETS	SHEET NO.
365	59 RS-3	DUPAGE	20	17
TC-14			CONTRACT NO. 60J49	
FED. ROAD DIST. NO. 1 ILLINOIS FED. AID PROJECT				



QUANTITY
 4 (100) LINE = 64.1 ft. (19.7 m)
 21.1 sq. ft. (1.97 sq. m)



QUANTITY
 4 (100) LINE = 82.5 ft. (25.3 m)
 27.5 sq. ft. (2.53 sq. m)



QUANTITY
 4 (100) LINE = 45.5 ft. (13.9 m)
 15.2 sq. ft. (1.39 sq. m)

All dimensions are in inches (millimeters) unless otherwise shown.

FILE NAME = W:\diststd\22x34\tcl6.dgn	USER NAME = geglienobt	DESIGNED -	REVISED -T. RAMMACHER 06-05-96
		DRAWN -	REVISED -T. RAMMACHER 11-04-97
	PLOT SCALE = 50.0000 / IN.	CHECKED -	REVISED -T. RAMMACHER 03-02-98
	PLOT DATE = 1/4/2008	DATE - 09-18-94	REVISED -E. GOMEZ 08-28-00

STATE OF ILLINOIS
 DEPARTMENT OF TRANSPORTATION

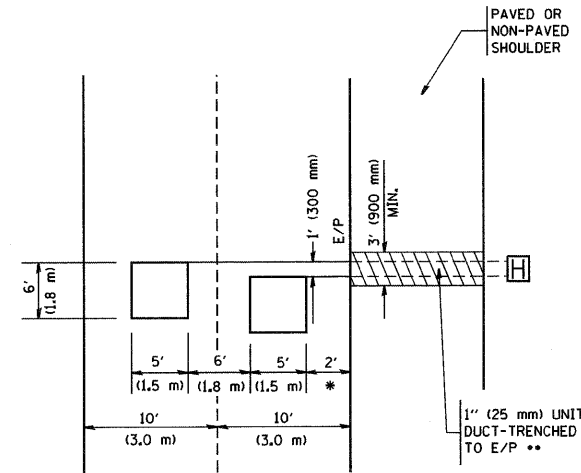
PAVEMENT MARKING LETTERS AND SYMBOLS
 FOR TRAFFIC STAGING

SCALE: NONE SHEET NO. 1 OF 1 SHEETS STA. TO STA.

F.A. RTE.	SECTION	COUNTY	TOTAL SHEETS	SHEET NO.
365	59 RS-3	DUPAGE	20	18
TC-16			CONTRACT NO. 60J49	
FED. ROAD DIST. NO. 1 ILLINOIS FED. AID PROJECT				

LOOPS NEXT TO SHOULDERS

PROVIDE A PAVEMENT REPLACEMENT NOTE WHICH SHOULD EQUAL 3' (900 mm) X WIDTH OF PAVED SHOULDER.

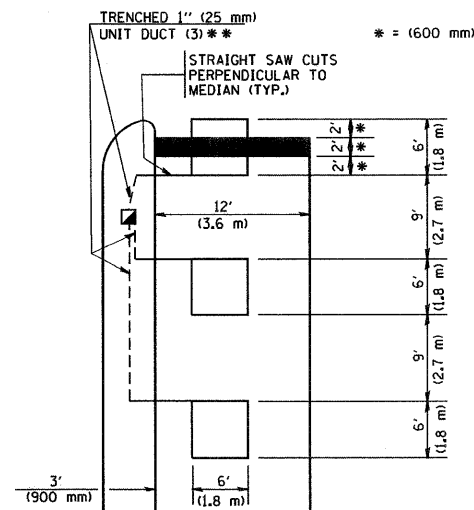


* = (600 mm)

** UNIT DUCT IS TO BE SHOWN ON PLAN SHEETS BUT SHALL NOT BE INCLUDED IN THE PAY ITEMS.

**LEFT TURN LANES WITH MEDIANS
VOLUME DENSITY ("FAR OUT" DETECTION)
ON SAME APPROACH
(PROTECTED / PERMITTED LEFT TURN PHASING)**

HANDHOLE LOCATION MAY VARY DEPENDING ON GEOMETRICS AND DESIGN OF TRAFFIC SIGNALS. HEAVY-DUTY HANDHOLES TO BE USED WHEN THE MEDIAN IS MOUNTABLE. REFER TO STANDARD 814001 TO ENSURE THAT HANDHOLE FITS IN MEDIAN.

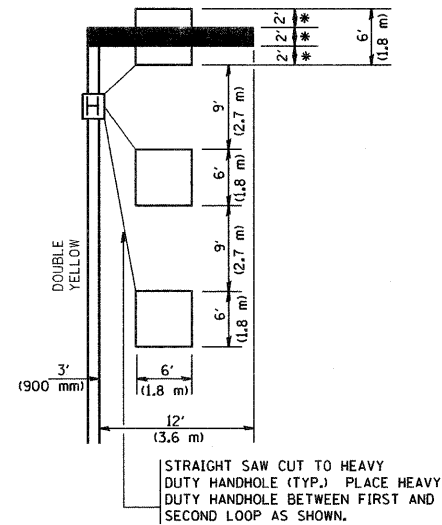


** UNIT DUCT IS TO BE SHOWN ON PLAN SHEETS BUT SHALL NOT BE INCLUDED IN THE PAY ITEMS.

NOTE: DUAL LEFT TURNS NOT SHOWN REFER TO PLAN SHEET FOR DETECTOR LOOP REPLACEMENT

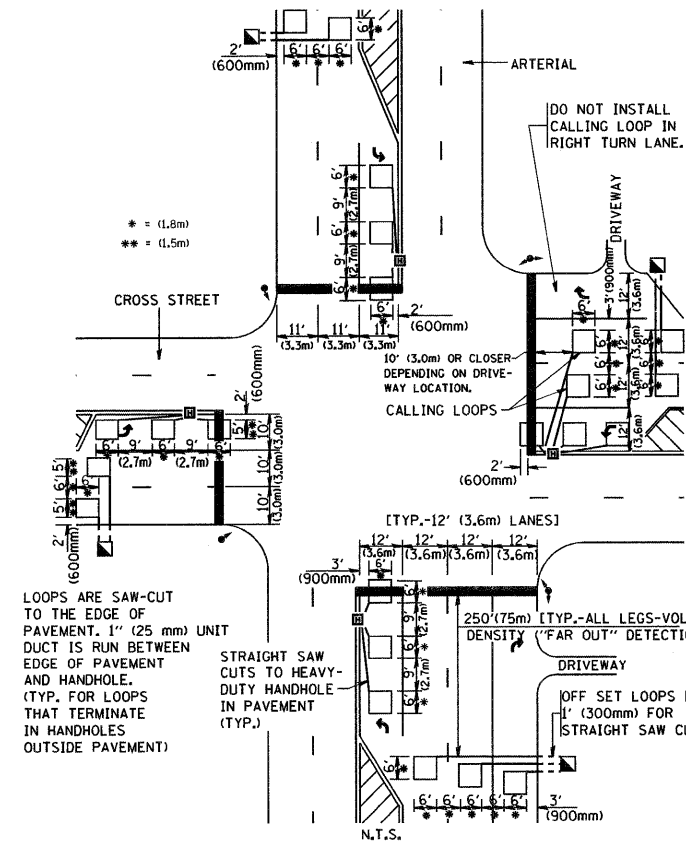
**LEFT TURN LANES WITHOUT MEDIANS
VOLUME DENSITY ("FAR OUT" DETECTION)
ON SAME APPROACH
(PROTECTED / PERMITTED LEFT TURN PHASING)**

* = (600 mm)



NOTE: DUAL LEFT TURNS NOT SHOWN REFER TO PLAN SHEET FOR DETECTOR LOOP REPLACEMENT

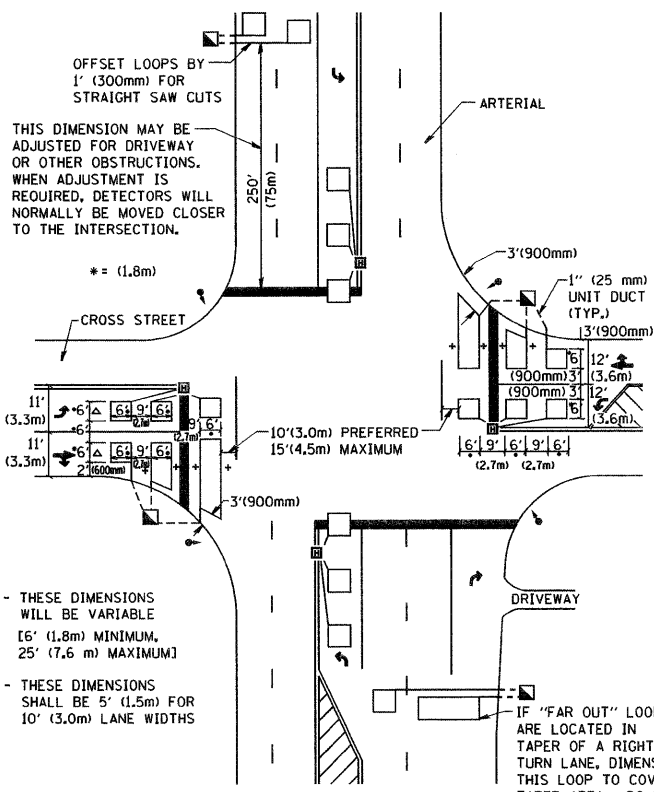
**ARTERIAL-VOLUME DENSITY ("FAR OUT" DETECTION)
CROSS STREET-VOLUME DENSITY ("FAR OUT" DETECTION)**



**DETAIL 1
N.T.S.**

**ARTERIAL-VOLUME DENSITY ("FAR OUT" DETECTION)
CROSS STREET-NON VOLUME DENSITY ("UPTIGHT" PRESENCE DETECTION)**

OFFSET LOOPS BY 1' (300mm) FOR STRAIGHT SAW CUTS
THIS DIMENSION MAY BE ADJUSTED FOR DRIVEWAY OR OTHER OBSTRUCTIONS. WHEN ADJUSTMENT IS REQUIRED, DETECTORS WILL NORMALLY BE MOVED CLOSER TO THE INTERSECTION.



**DETAIL 2
N.T.S.**

NOTES:

VEHICLES LOOP DETECTORS

- * ALL LEAD IN CABLE SHALL BE TWO CONDUCTOR NO. 14 TWISTED, SHIELDED.
- * EACH DETECTOR LOOP SHALL HAVE ITS OWN SAW CUT FROM THE LOOP TO THE EDGE OF PAVEMENT OR TO A HANDHOLE IN THE PAVEMENT.
- * EACH DETECTOR LOOP SHALL HAVE ITS OWN ONE INCH (25 mm) UNIT DUCT BETWEEN THE EDGE OF PAVEMENT AND THE FIRST HANDHOLE OR JUNCTION BOX. EACH UNIT DUCT RUN SHALL BE SHOWN ON THE PLANS BY THE DESIGNER, BUT SHALL NOT BE PAID FOR SEPARATELY. THIS ITEM IS INCIDENTAL TO THE PAY ITEM FOR DETECTOR LOOPS.
- * ONE DIMENSION OF ALL DETECTOR LOOPS SHALL BE SIX FEET (1.8 m)
- * EACH LANE OF NON-LOCKING, PRESENCE DETECTION AND EACH LANE OF A DOUBLE LEFT TURN LANE REQUIRES A SEPARATE INDUCTIVE LOOP DETECTOR AND LEAD IN CABLE.
- * WHEN NON-LOCKING, PRESENCE DETECTION IS USED, MORE THAN ONE LOOP PER LANE IS REQUIRED BEHIND THE STOP BAR (i.e. 1-1/2, 1-3/4, 2).
- * WHEN SYSTEM LOOPS ARE REQUIRED ON AN APPROACH OF AN INTERSECTION, THE LOOPS USED FOR VOLUME DENSITY AND INTERSECTION TIMING SHALL ALSO BE USED AS SYSTEM DETECTORS. EACH ONE OF THESE TYPE OF LOOPS REQUIRES A SEPARATE TWO CONDUCTOR NO. 14 TWISTED SHIELDED CABLE AND A SEPARATE INDUCTIVE LOOP DETECTOR WHEN NEW CONTROLLERS ARE UTILIZED. THE DESIGNER SHALL LABEL THESE TYPES OF LOOPS AS "INTERSECTION AND SAMPLING (SYSTEM) DETECTORS" ON THE SIGNAL LAYOUT, THE INTERCONNECT PLAN AND THE SYSTEM CABLE PLAN. WHEN AN EXISTING CONTROLLER IS UTILIZED FOR THIS TYPE OF DETECTION, THE PAY ITEM "INDUCTIVE LOOP DETECTOR WITH SYSTEM OUTPUT" SHOULD BE USED.

PLACEMENT OF DETECTORS

THE FOLLOWING FIGURES REPRESENT THE MOST COMMON DETECTOR LOOP LOCATIONS AND SIZES. ADJUSTMENTS WILL BE NECESSARY FOR SPECIFIC GEOMETRIC CONSIDERATIONS.

LOCATIONS AND DEMENSIONS OF DETECTOR LOOPS ARE REQUIRED ON ALL SIGNAL LAYOUT PLAN SHEETS.

"FAR OUT" DETECTION REFERS TO LOCKING, PRESENCE TYPE DETECTION LOCATED IN THRU LANES, RIGHT TURN LANES, AND RIGHT TURN LANE TAPER AREAS (IF APPLICABLE), USUALLY 250' (75 m) IN ADVANCE OF STOP BARS. "UPTIGHT" DETECTION REFERS TO NON-LOCKING PRESENCE TYPE DETECTION LOCATED IN ALL LANES AND 10'-15' (3.0 m-4.5 m) BEHIND THE CROSSING STREET'S EDGE OF PAVEMENT EXTENDED.

NOTE:

ALL DETAILS AND NOTES SHOWN ARE FROM THE I.D.O.T. DISTRICT 1 TRAFFIC SIGNAL DESIGN GUIDELINES DATED JANUARY 1995

THIS DRAWING HAS BEEN PREPARED TO ASSIST THE RESIDENT ENGINEER FOR ALL ROADWAY RESURFACING OR S.M.A.R.T. PROJECTS WHERE THE DIMENSIONS ARE NOT SHOWN ON THE PLANS AND THE FINAL LOCATIONS FOR CROSSWALKS OR STOP BARS ARE NOT DETERMINED.

FILE NAME = W:\diststd\22x34\ts07.dgn

USER NAME = geglionobt
PLOT SCALE = 50.0000' / IN.
PLOT DATE = 1/4/2008

DESIGNED -
DRAWN -
CHECKED - R.K.F.
DATE -

REVISED -
REVISED -
REVISED -
REVISED -

**STATE OF ILLINOIS
DEPARTMENT OF TRANSPORTATION**

**DISTRICT 1 - DETECTOR LOOP INSTALLATION
DETAILS FOR ROADWAY RESURFACING**

SCALE: NONE SHEET NO. 1 OF 1 SHEETS STA. TO STA.

F.A. RTE.	SECTION	COUNTY	TOTAL SHEETS	SHEET NO.
365	59 RS-3	DUPAGE	20	20
TS-07			CONTRACT NO. 60J49	
FED. ROAD DIST. NO. 1 ILLINOIS FED. AID PROJECT				