

STATE OF ILLINOIS  
DEPARTMENT OF TRANSPORTATION

F.A. RTE.	SECTION	COUNTY	TOTAL SHEETS	SHEET NO.
I-74	(48-29RA)I-28; (X3-16RA)I-15	KNOX WOODFORD	15	1
		ILLINOIS	CONTRACT NO. 68G77	

D-94-004-22

INDEX OF SHEETS:  
SEE SHEET 2 FOR INDEX OF SHEETS

PROPOSED  
HIGHWAY PLANS

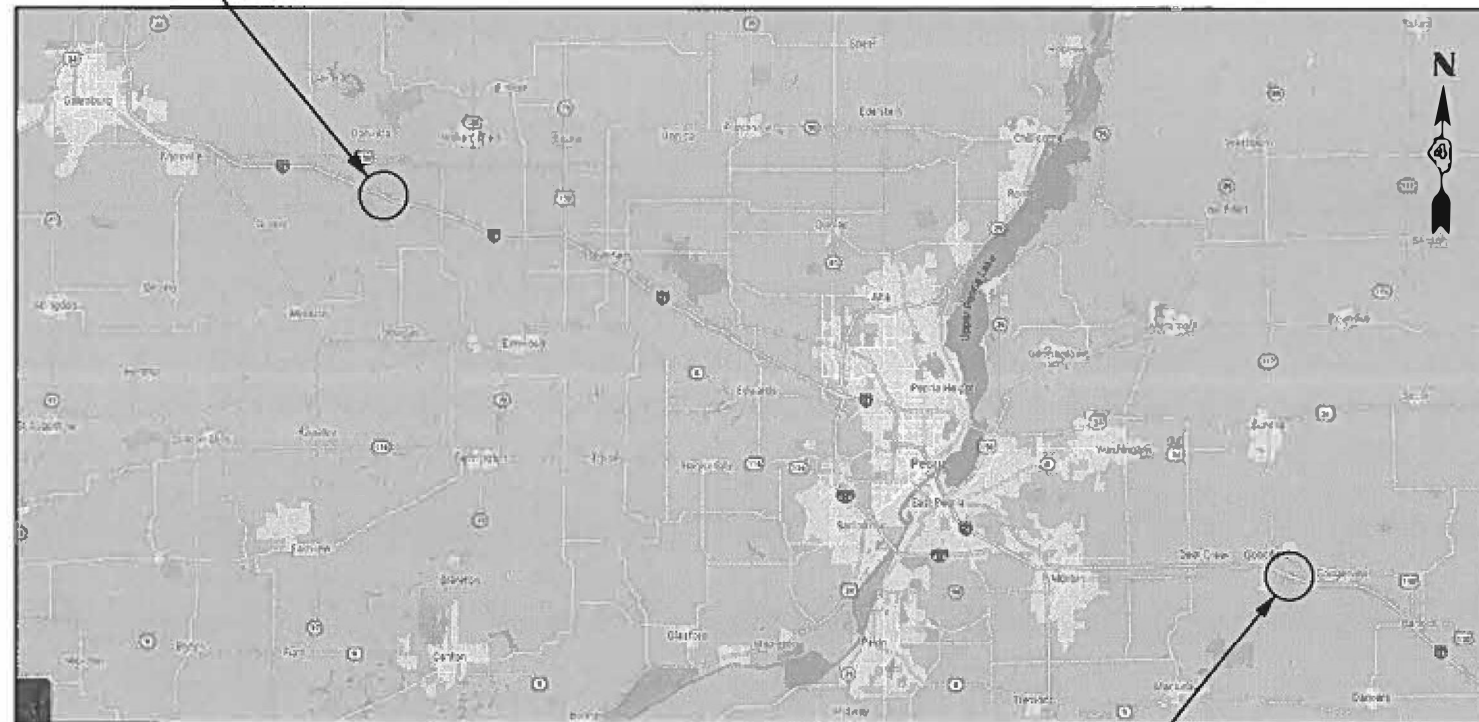
FAI 74 (I-74)  
(48-29RA)I-28; (X3-16RA)I-15  
KNOX-WOODFORD COUNTIES PROJECT  
NUMBER: NHFP-JW3T(608)

KNOX COUNTY  
I-74 EB AND I-74 WB  
SPOON RIVER REST AREAS  
(2 LOCATIONS)

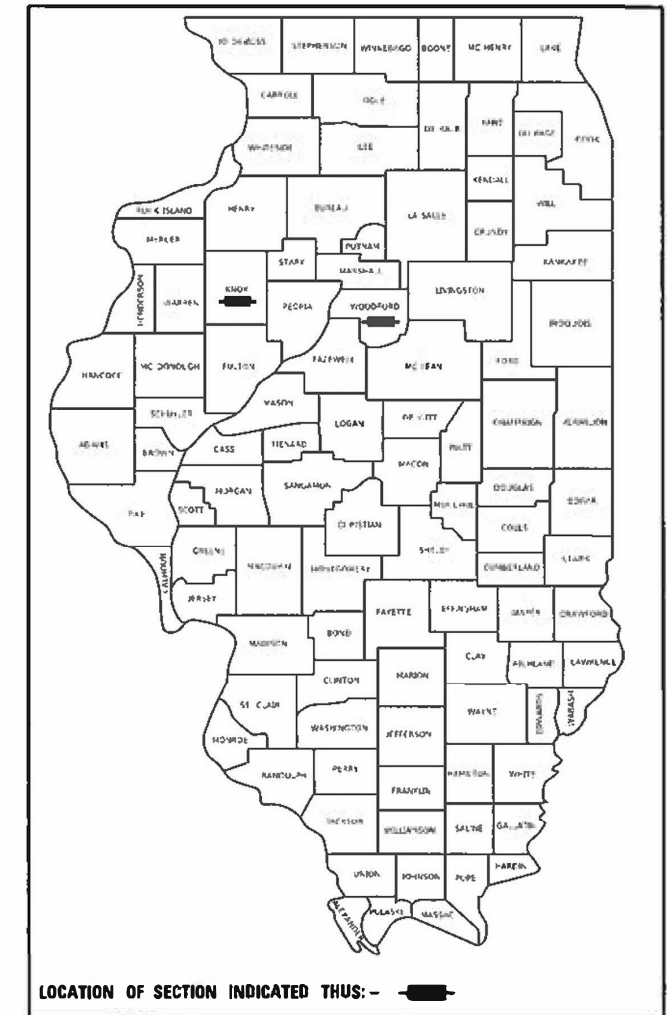
C-94-009-22

HIGHWAY STANDARDS:  
SEE SHEET 2 FOR A LIST OF  
APPLICABLE HIGHWAY STANDARDS

PROJECT DESCRIPTION:  
INSTALLATION OF TRUCK PARKING  
INFORMATION MANAGEMENT SYSTEMS  
(TPIMS) AT THE SPOON RIVER AND  
MACKINAW DELLS (EB AND WB)  
REST AREAS IN DISTRICT FOUR.



WOODFORD COUNTY  
I-74 EB AND I-74 WB  
MACKINAW DELLS REST  
AREAS (2 LOCATIONS)



J.U.L.I.E.  
JOINT UTILITY LOCATION INFORMATION FOR EXCAVATORS  
1-800-892-0123  
OR 811

PROJECT ENGINEER : ERIC HOWALD (309) 671-4481  
PROJECT MANAGER : BEN TELLEFSON (309) 671-4477  
CATALOG NO. 036279-00D  
CONTRACT NO. 68G77

STATE OF ILLINOIS  
DEPARTMENT OF TRANSPORTATION

SUBMITTED Feb 04 20 22  
Kensel A Garnett KSO  
REGIONAL ENGINEER

March 25 20 22  
[Signature]  
ENGINEER OF DESIGN AND ENVIRONMENT

March 2 20 22  
[Signature]  
DIRECTOR OF HIGHWAYS PROJECT IMPLEMENTATION

PRINTED BY THE AUTHORITY  
OF THE STATE OF ILLINOIS

NO COMMITMENTS HAVE BEEN MADE IN CONJUNCTION WITH THIS PROJECT.

INDEX OF SHEETS	
SHEET	DESCRIPTION
1	COVER SHEET
2	COMMITMENTS, INDEX OF SHEETS, HIGHWAY STANDARDS
3	CONSTRUCTION NOTES
4	SUMMARY OF QUANTITIES
5	SCHEDULE OF QUANTITIES
6	PROPOSED TPIMS INSTALLATION DETAILS - I-74 EB @ SPOON RIVER REST AREA
7	TPIMS CCTV CAMERA DETAIL - I-74 EB @ SPOON RIVER REST AREA
8	REMOVAL OF EXISTING ITS EQUIPMENT - I-74 EB @ SPOON RIVER REST AREA
9	PROPOSED TPIMS INSTALLATION DETAILS - I-74 WB @ SPOON RIVER REST AREA
10	TPIMS CCTV CAMERA DETAIL - I-74 WB @ SPOON RIVER REST AREA
11	PROPOSED TPIMS INSTALLATION DETAILS - I-74 EB @ MACKINAW DELLS REST AREA
12	TPIMS CCTV CAMERA DETAIL - I-74 EB @ MACKINAW DELLS REST AREA
13	PROPOSED TPIMS INSTALLATION DETAILS - I-74 WB @ MACKINAW DELLS REST AREA
14	TPIMS CCTV CAMERA DETAIL - I-74 WB @ MACKINAW DELLS REST AREA
15	CAMERA POLE DETAIL

HIGHWAY STANDARDS	
000001-08	STANDARD SYMBOLS, ABBREVIATIONS AND PATTERNS
001006	DECIMAL OF AN INCH & FOOT
701001-02	OFF-ROAD OPERATIONS, 2L, 2W, MORE THAN 15' AWAY
701006-05	OFF-ROAD OPERATIONS, 2L, 2W, 15' TO 24" FROM PAVEMENT EDGE
701101-05	OFF-ROAD OPERATIONS, MULTILANE, 15' TO 24" FROM PAVEMENT EDGE
701106-02	OFF-ROAD OPERATIONS, MULTILANE, MORE THAN 15' AWAY
701801-06	SIDEWALK, CORNER, OR CROSSWALK CLOSURE
701901-08	TRAFFIC CONTROL DEVICES

MODEL: Default  
FILE NAME: C:\COMMONCENTTransfer - Bureau\68G77 - Final Plans\68G77 - D4 TPIMS (Revised 3-25-22).dgn

USER NAME = howalter	DESIGNED -	REVISED -
	DRAWN -	REVISED -
PLOT SCALE = 42.9315' / in.	CHECKED -	REVISED -
PLOT DATE = 3/25/2022	DATE -	REVISED -

STATE OF ILLINOIS  
DEPARTMENT OF TRANSPORTATION

COMMITMENTS, INDEX OF SHEETS, HIGHWAY STANDARDS,  
AND CONSTRUCTION NOTES

SCALE: SHEET OF SHEETS STA. TO STA.

F.A.I. RTE.	SECTION	COUNTY	TOTAL SHEETS	SHEET NO.
74	(48-29RA)I-28; (X3-16RA)I-15	KNOX WOODFORD	15	2
ILLINOIS FED. AID PROJECT			CONTRACT NO. 68G77	

**CONSTRUCTION NOTES**

1. EXISTING UTILITY LOCATION INFORMATION IS NOT SHOWN ON THE PLAN SHEETS. THE CONTRACTOR SHALL FIELD VERIFY THE LOCATION OF ALL UTILITIES AND PRIVATELY OWNED FACILITIES PRIOR TO THE INSTALLATION OF ANY COMPONENTS. THE CONTRACTOR SHALL VERIFY EXISTING FIELD CONDITIONS AND TERRAIN PRIOR TO COMMENCING WORK ON THE PROJECT.
2. THE LOCATION OF ALL UTILITIES AND PRIVATELY OWNED FACILITIES SHALL BE FIELD VERIFIED BY THE CONTRACTOR PRIOR TO THE INSTALLATION OF ANY COMPONENTS.
3. THE CONTRACTOR SHALL BE RESPONSIBLE FOR LOCATING EXISTING IDOT ELECTRICAL FACILITIES AT HIS/HER OWN EXPENSE IF REQUIRED. THE CONTRACTOR SHALL ALSO BE LIABLE FOR ANY DAMAGE TO IDOT FACILITIES RESULTING FROM INACCURATE LOCATING.
4. ELECTRICAL WORK SHALL CONFORM WITH NATIONAL, STATE, AND LOCAL CODES.
5. THE CONTRACTOR SHALL PROVIDE ELECTRICAL CABLE SLACK IN ACCORDANCE WITH ARTICLE 873.03.
6. ALL SURPLUS MATERIALS SHALL BE DISPOSED OF IN ACCORDANCE WITH ARTICLE 202.03 OF THE STANDARD SPECIFICATIONS.
7. THE CONTRACTOR SHALL VERIFY FIELD CONDITIONS PRIOR TO BIDDING. THERE WILL BE NO ADDITIONAL COMPENSATION PAID FOR CLAIMS THAT ARISE FROM A FAILURE TO FULLY INVESTIGATE EXISTING FIELD CONDITIONS.
8. ANY MAINTENANCE OF EXISTING ELECTRICAL FACILITIES WILL BE CONSIDERED EXTRA WORK IN ACCORDANCE WITH ARTICLE 109.04 OF THE STANDARD SPECIFICATIONS.
9. ELECTRICAL CABLE WILL BE MEASURED FOR PAYMENT IN ACCORDANCE WITH ARTICLE 873.05.
10. CAMERAS SHALL BE INSTALLED AT A MOUNTING HEIGHT OF 43 FT.
11. THE EXISTING TRUCK PARKING SYSTEM LOCATED AT I-74 EB SPOON RIVER REST AREA SHALL REMAIN IN OPERATION UNTIL THE PROPOSED SYSTEM IS INSTALLED AND OPERATIONAL.
12. THE CONTRACTOR SHALL NOTIFY ERIC HOWALD, IDOT DISTRICT 4 TRAFFIC SIGNAL SYSTEMS ENGINEER AT (309) 264-1813 A MINIMUM OF 48 HOURS PRIOR TO CAMERA AIMING. THE CONTRACTOR SHALL ADJUST AND AIM THE PROPOSED CAMERAS WHILE THE IDOT REPRESENTATIVE IS ON-SITE. THE CONTRACTOR SHALL HAVE ALL OF THE CAMERAS INSTALLED AND FUNCTIONAL AT A SITE BEFORE NOTIFYING IDOT TO ARRANGE FINAL AIMING.
13. THE DEPARTMENT WILL PROGRAM ALL CAMERAS AFTER INSTALLATION.
14. THE CONTRACTOR SHALL FURNISH AND INSTALL NEW CAT 5 ETHERNET CABLE TO THE PROPOSED CCTV CAMERAS. THE COST OF THIS WORK SHALL BE PAID FOR SEPARATELY AS "CAT 5 ETHERENT CABLE".
15. THE CONTRACTOR SHALL INSTALL THE PROPOSED CCTV CAMERA BRACKET ON THE CAMERA POLES AT THE LOCATIONS SHOWN ON THE PLAN SHEETS. THE CAMERA BRACKET SHALL BE SECURED TO THE POLE WITH STAINLESS STEEL BANDING. THE CONTRACTOR SHALL INSTALL SET SCREWS AND ADDITIONAL HARDWARE AS NEEDED TO ENSURE THAT THE CAMERA AND CAMERA BRACKET DOES NOT LOOSEN. THE COST OF THIS WORK SHALL BE INCLUDED IN THE COST OF THE PROPOSED CCTV CAMERA.
16. THE CONTRACTOR SHALL INSTALL THE PROPOSED CONDUIT INTO THE BASE OF THE EXISTING LIGHT POLES AT THE LOCATIONS SHOWN ON THE PLAN SHEETS. THE COST OF THIS WORK SHALL BE INCLUDED IN THE PAY ITEM FOR THE PROPOSED CONDUIT.
17. THE CONTRACTOR SHALL FURNISH AND INSTALL A DIRECT BURIED, ALUMINUM LIGHT POLE, WITH A 45 FT. HEIGHT AS SHOWN ON THE CAMERA POLE DETAIL PLAN SHEET. THE CONTRACTOR SHALL PROVIDE ALL ITEMS REQUIRED FOR INSTALLATION INCLUDING BUT NOT LIMITED TO COARSE GRANULAR BASE, FA-1 MATERIAL, TOPSOIL, SEEDING, AND ALL OTHER ITEMS REQUIRED TO INSTALL THE LIGHT POLE. THE CONTRACTOR SHALL UTILIZE THE REMOVED MATERIAL ON SITE OR DISPOSE OF IT AS DIRECTED BY THE ENGINEER. THE COST OF THIS WORK SHALL BE INCLUDED IN THE BID PRICE FOR "CAMERA POLE, 45 FT."
18. ALL CAMERAS WILL BE SUBJECT TO A 30 DAY BURN-IN PERIOD. DURING THE BURN-IN PERIOD, ALL COMPONENTS SHALL PERFORM CONTINUOUSLY, WITHOUT ANY INTERRUPTION OF OPERATION, FOR A PERIOD OF 30 DAYS. ALL CAMERAS AT A REST AREA SHALL BE FULLY OPERATIONAL AND AIMED BEFORE THE BURN-IN PERIOD CAN START.

MODEL: Default  
 FILE NAME: C:\COMMON\GENENT\order - Bureau\68G77 - Final\Plan\68G77 - DA TRMS (revised 3-25-22).dgn

USER NAME = howald	DESIGNED -	REVISED -
	DRAWN -	REVISED -
PLOT SCALE = 42.9315 */ in.	CHECKED -	REVISED -
PLOT DATE = 3/25/2022	DATE -	REVISED -

**STATE OF ILLINOIS  
DEPARTMENT OF TRANSPORTATION**

**CONSTRUCTION NOTES**

SCALE: SHEET OF SHEETS STA. TO STA.

F.A.I. RTE.	SECTION	COUNTY	TOTAL SHEETS	SHEET NO.
74	(48-29RA)-28; (X3-16RA)-15	KNOX WOODFORD	15	3
CONTRACT NO. 68G77				
ILLINOIS FED. AID PROJECT				

**SUMMARY OF QUANTITIES**

PAY ITEM CODE	ITEM DESCRIPTION	UNIT	TOTAL QTY.	KNOX COUNTY	WOODFORD COUNTY
				CONST. TYPE CODE 0021 VARIOUS ROUTES 80% FEDERAL 20% STATE ITS FUNDS RURAL	CONST. TYPE CODE 0021 VARIOUS ROUTES 80% FEDERAL 20% STATE ITS FUNDS RURAL
67100100	MOBILIZATION	L SUM	1.0	0.5	0.5
81028330	UNDERGROUND CONDUIT, PVC, 1 1/4" DIA.	FOOT	1740.0	490.0	1250.0
87900200	DRILL EXISTING HANDHOLE	EACH	5.0	2.0	3.0
X0323906	CAMERA POLE, 45 FT	EACH	7.0	4.0	3.0
X0325482	REMOVE EXISTING ITS EQUIPMENT	EACH	1.0	1.0	
X0326812	CAT 5 ETHERNET CABLE	FOOT	4496.0	953.0	3543.0
X0327216	CLOSED CIRCUIT TELEVISION CAMERA	EACH	10.0	4.0	6.0
X1400179	CLOSED CIRCUIT TELEVISION DOME CAMERA, HD	EACH	4.0		4.0
X1400440	ETHERNET CONVERTER	EACH	8.0	1.0	7.0
X7010216	TRAFFIC CONTROL AND PROTECTION, (SPECIAL)	L SUM	1.0	0.5	0.5

MODEL: Default  
FILE NAME: G:\COMMONCENTTransfer - Bureau\68G77 - Final Plans\68G77 - D4 TYPMS (Final) 2-22-2021.dgn

USER NAME = howaldt	DESIGNED -	REVISED -
PLOT SCALE = 42.9315' / in.	DRAWN -	REVISED -
PLOT DATE = 2/4/2022	CHECKED -	REVISED -
	DATE -	REVISED -

**STATE OF ILLINOIS  
DEPARTMENT OF TRANSPORTATION**

**SUMMARY OF QUANTITIES**

SCALE: SHEET OF SHEETS STA. TO STA.

F.A.I. RTE.	SECTION	COUNTY	TOTAL SHEETS	SHEET NO.
74	(48-29RA)I-28; (X3-16RA)I-15	PEORIA TAEWELL	15	4
ILLINOIS FED. AID PROJECT			CONTRACT NO. 68G77	



**SCHEDULE OF QUANTITIES**

ITEM DESCRIPTION	UNIT	TOTAL QTY.	KNOX COUNTY		WOODFORD COUNTY	
			I-74 EB @ SPOON RIVER REST AREA	I-74 EB @ SPOON RIVER REST AREA	I-74 EB @ MACKINAW DELLS REST AREA	I-74 WB @ MACKINAW DELLS REST AREA
			UNDERGROUND CONDUIT, PVC, 1 1/4" DIA.	FOOT	1740.0	338.0
DRILL EXISTING HANDHOLE	EACH	5.0	1.0	1.0	1.0	2.0
CAMERA POLE, 45 FT	EACH	7.0	2.0	2.0		3.0
REMOVE EXISTING ITS EQUIPMENT	EACH	1.0	1.0			
CAT 5 ETHERNET CABLE	FOOT	4496.0	661.0	292.0	1648.0	1895.0
CLOSED CIRCUIT TELEVISION CAMERA	EACH	10.0	2.0	2.0	4.0	2.0
ETHERNET CONVERTER	EACH	8.0	1.0		4.0	3.0
CLOSED CIRCUIT TELEVISION DOME CAMERA, HD	EACH	4.0				4.0

MODEL: Default  
 FILE NAME: G:\COMMON\GENTransfer - Bureau\68G77 - Final\Bbox\68G77 - D4.TPMS (Revised 3-25-22).dgn

USER NAME = howaldt	DESIGNED -	REVISED -
	DRAWN -	REVISED -
PLOT SCALE = 42.9315 * / in.	CHECKED -	REVISED -
PLOT DATE = 3/25/2022	DATE -	REVISED -

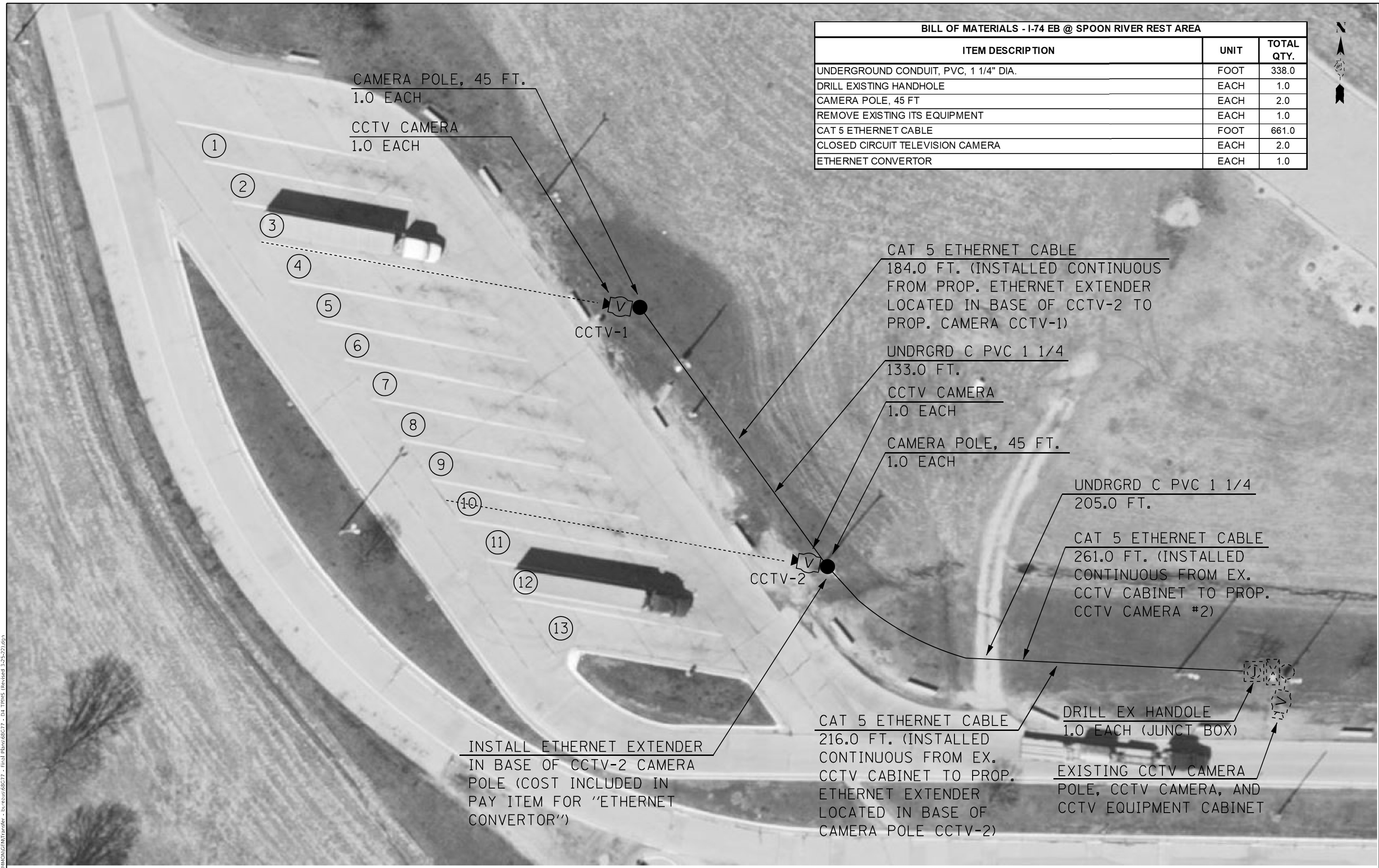
**STATE OF ILLINOIS  
DEPARTMENT OF TRANSPORTATION**

**SCHEDULE OF QUANTITIES  
PEORIA COUNTY**

SCALE: SHEET OF SHEETS STA. TO STA.

F.A.I. RTE.	SECTION	COUNTY	TOTAL SHEETS	SHEET NO.
74	(48-29RA)-28; (X3-16RA)-15	KNOX WOODFORD	15	5
CONTRACT NO. 68G77				
ILLINOIS FED. AID PROJECT				

BILL OF MATERIALS - I-74 EB @ SPOON RIVER REST AREA		
ITEM DESCRIPTION	UNIT	TOTAL QTY.
UNDERGROUND CONDUIT, PVC, 1 1/4" DIA.	FOOT	338.0
DRILL EXISTING HANDHOLE	EACH	1.0
CAMERA POLE, 45 FT	EACH	2.0
REMOVE EXISTING ITS EQUIPMENT	EACH	1.0
CAT 5 ETHERNET CABLE	FOOT	661.0
CLOSED CIRCUIT TELEVISION CAMERA	EACH	2.0
ETHERNET CONVERTOR	EACH	1.0



MODEL: Default  
 FILE NAME: G:\COMMON\GEN\Transfer - Bureau\68G77 - D4 TRMS (Revised 3-25-22).dgn

USER NAME = howalter	DESIGNED -	REVISED -
	DRAWN -	REVISED -
PLOT SCALE = 42.9315 * / in.	CHECKED -	REVISED -
PLOT DATE = 3/25/2022	DATE -	REVISED -

**STATE OF ILLINOIS**  
**DEPARTMENT OF TRANSPORTATION**

TPIMS INSTALLATION DETAILS	
I-74 EB AT SPOON RIVER REST AREA	
SCALE:	SHEET OF SHEETS STA. TO STA.

F.A.I. RTE.	SECTION	COUNTY	TOTAL SHEETS	SHEET NO.
74	(48-29RA)-28; (X3-16RA)-15	KNOX WOODFORD	15	6
ILLINOIS FED. AID PROJECT				

CONTRACT NO. 68G77



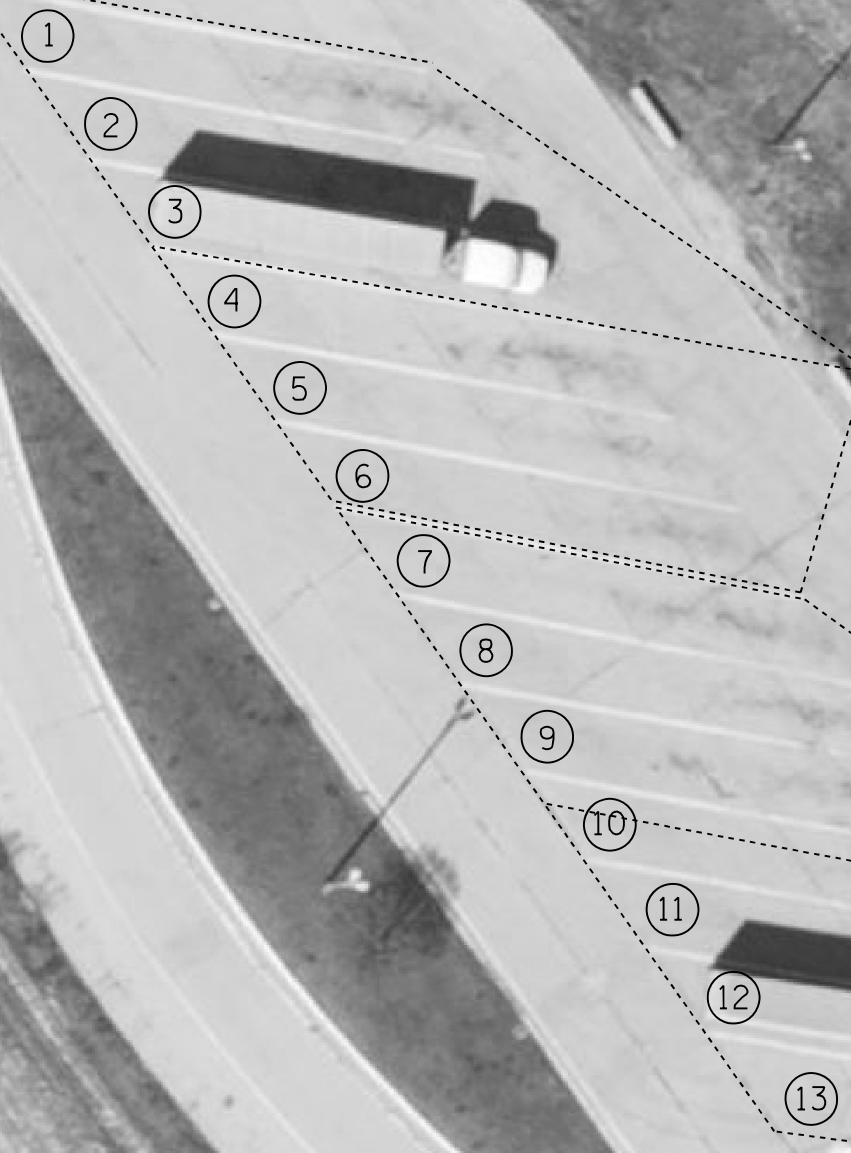
ALIGN CAMERA WITH LANE LINE  
BETWEEN PARKING STALLS 3 AND 4.  
CAMERA SHALL BE AIMED TO PROVIDE  
COVERAGE OF PARKING STALLS 1-6.

THE CONTRACTOR SHALL NOTIFY THE DEPARTMENT PRIOR TO ARRANGE FOR  
IDOT TO BE ON SITE FOR FINAL CAMERA AIMING. THE CONTRACTOR SHALL AIM  
THE CAMERAS TO THE SATISFACTION OF THE DEPARTMENT. THE COST OF THIS  
WORK SHALL BE INCLUDED IN THE BID PRICE FOR THE PROPOSED CCTV  
CAMERAS.

ALIGN CAMERA WITH MIDDLE OF  
PARKING STALL NUMBER 10.  
CAMERA SHALL BE AIMED TO PROVIDE  
COVERAGE OF PARKING STALLS 6-13.

CCTV-1

CCTV-2



MODEL: Default  
 FILE NAME: G:\COMMON\GEN\TRANSFER - Bureau\68G77 - D4 TPIMS (Revised 3-25-22).dgn

USER NAME = howalter	DESIGNED -	REVISED -
	DRAWN -	REVISED -
PLOT SCALE = 42.9315' / in.	CHECKED -	REVISED -
PLOT DATE = 3/25/2022	DATE -	REVISED -

**STATE OF ILLINOIS  
DEPARTMENT OF TRANSPORTATION**

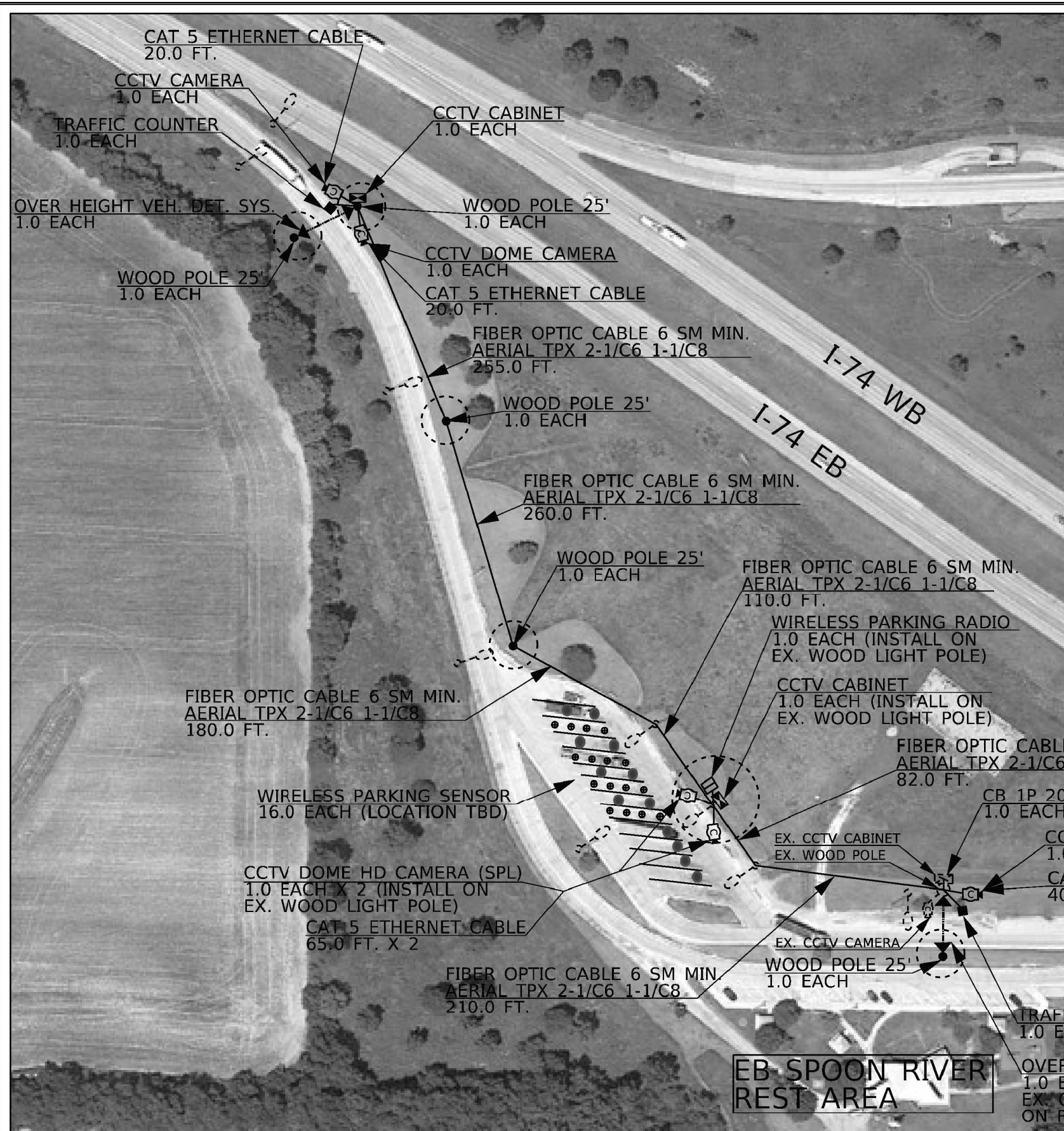
**TPIMS CCTV CAMERA DETAIL**  
**I-74 EB AT SPOON RIVER REST AREA**

SCALE: SHEET OF SHEETS STA. TO STA.

F.A.I. RTE.	SECTION	COUNTY	TOTAL SHEETS	SHEET NO.
74	(48-29RA)-28; (X3-16RA)-15	KNOX WOODFORD	15	7
ILLINOIS FED. AID PROJECT				

CONTRACT NO. 68G77





BILL OF MATERIALS		
DESCRIPTION	UNIT	QTY.
TRAFFIC COUNTER	EACH	2.0
CLOSED CIRCUIT TELEVISION DOME CAMERA	EACH	1.0
CLOSED CIRCUIT TELEVISION CABINET	EACH	2.0
CIRCUIT BREAKER, 1-POLE, 20 AMP, 120V IN EXISTING TSC CABINET	EACH	1.0
CAT 5 ETHERNET CABLE	FOOT	190.0
CLOSED CIRCUIT TELEVISION CAMERA	EACH	2.0
OVER HEIGHT VEHICLE DETECTION SYSTEM	EACH	2.0
CLOSED CIRCUIT TELEVISION DOME CAMERA, HD, SPECIAL	EACH	2.0
WIRELESS PARKING SENSOR	EACH	16.0
WIRELESS PARKING RADIO	EACH	1.0
WOOD POLE 25 FT.	EACH	5.0
FIBER OPTIC CABLE 6 FIBERS, SINGLE MODE (MINIMUM)	FOOT	1261.0
AERIAL CABLE, TRIPLEX 2-1/C NO. 6 AND 1-1/C NO.8 GROUND	FOOT	1261.0

REMOVE EXISTING ITS EQUIPMENT - 1.0 EACH  
(INCLUDES ALL ITEMS LISTED BELOW)

THE CONTRACTOR SHALL REMOVE THE FOLLOWING ITEMS AND DELIVER THEM TO THE IDOT TRAFFIC BUILDING LOCATED AT 1025 W. DETWEILLER DR., PEORIA

CCTV CAMERA AND MOUNTING BRACKETS - 4.0 EACH  
TRAFFIC COUNTER - QTY. 2.0 EACH  
OVERHEIGHT TRAFFIC SENSORS AND MOUNTING BRACKETS - QTY. 2.0 EACH  
SENSYS RADIO EQUIPMENT - ALL  
EQUIPMENT INSIDE CCTV CABINETS - ALL

THE CONTRACTOR SHALL REMOVE THE FOLLOWING ITEMS AND DISPOSE OF THEM OFF OF THE RIGHT-OF-WAY. THE CONTRACTOR SHALL REFLECT THE SALVAGE VALUE OF THE ITEMS IN THE UNIT BID PRICE:

WOOD POLE - QTY. 5.0 EACH  
CCTV EQUIPMENT CABINET - QTY. 2.0 EACH  
AERIAL POWER CABLE (TRIPLEX) AND GROUND - ALL  
AERIAL FIBER OPTIC CABLE - ALL

THE CONTRACTOR SHALL RESTORE ALL DISTURBED AREAS BY BACKFILLING, GRADING, AND SEEDING AS NEEDED TO THE SATISFACTION OF THE ENGINEER.

SYMBOL LEGEND	
	EX. 50' WOOD POLE WITH LUMINAIRE
	EX. CCTV CABINET
	EX. 50' WOOD POLE
	PROP. CCTV CABINET
	PROP. 25' WOOD POLE
	PROP. CCTV CAMERA
	PROP. OVER HEIGHT VEHICLE DETECTION SYSTEM
	PROP. TRAFFIC COUNTER
	PROP. WIRELESS PARKING SENSOR

MODEL: Default  
 FILE NAME: G:\COMMON\GEN\Transfer - Bureau\68G77 - Da TRMS (Revised 3-25-2022).dgn  
 USER NAME: howaldier  
 DESIGNED -  
 DRAWN -  
 PLOT SCALE = 42.9315 \* / in.  
 PLOT DATE = 3/25/2022

USER NAME = howaldier	DESIGNED -	REVISED -
DRAWN -	REVISED -	REVISED -
CHECKED -	REVISED -	REVISED -
DATE -	REVISED -	REVISED -

STATE OF ILLINOIS  
DEPARTMENT OF TRANSPORTATION

REMOVAL OF EXISTING ITS EQUIPMENT  
I-74 EB AT SPOON RIVER REST AREA

SCALE: SHEET OF SHEETS STA. TO STA.

F.A.I. RTE.	SECTION	COUNTY	TOTAL SHEETS	SHEET NO.
74	(48-29RA)-28; (X3-16RA)-15	KNOX WOODFORD	15	8
ILLINOIS FED. AID PROJECT			CONTRACT NO. 68G77	

NOT TO SCALE

CCTV CAMERA  
1.0 EACH  
CAMERA POLE, 45 FT.  
1.0 EACH

UNDRGRD C PVC 1 1/4  
130.0 FT.

CAT 5 ETHERNET CABLE  
214.0 FT. (INSTALLED  
CONTINUOUS FROM EX.  
CCTV CABINET TO PROP.  
CCTV CAMERA #1)

CCTV CAMERA  
1.0 EACH

CAMERA POLE, 45 FT.  
1.0 EACH

UNDRGRD C PVC 1 1/4  
22.0 FT.

DRILL EX HANDOLE  
1.0 EACH (JUNCT BOX)

CAT 5 ETHERNET CABLE  
78.0 FT. (INSTALLED  
CONTINUOUS FROM EX.  
CCTV CABINET TO PROP.  
CCTV CAMERA #2)

EXISTING CCTV CAMERA  
POLE, CCTV CAMERA, AND  
CCTV EQUIPMENT CABINET

BILL OF MATERIALS - I-74 WB @ SPOON RIVER REST AREA		
ITEM DESCRIPTION	UNIT	TOTAL QTY.
UNDERGROUND CONDUIT, PVC, 1 1/4" DIA.	FOOT	152.0
DRILL EXISTING HANDHOLE	EACH	1.0
CAMERA POLE, 45 FT	EACH	2.0
CAT 5 ETHERNET CABLE	FOOT	292.0
CLOSED CIRCUIT TELEVISION CAMERA	EACH	2.0



MODEL: Default  
FILE NAME: G:\COMMON\GEN\Transfer - Bureau\68G77 - D4 TPIMS (revised 3-25-22).dgn

USER NAME = howalter	DESIGNED -	REVISED -
PLOT SCALE = 42.9315 * / in.	DRAWN -	REVISED -
PLOT DATE = 3/23/2022	CHECKED -	REVISED -
	DATE -	REVISED -

**STATE OF ILLINOIS  
DEPARTMENT OF TRANSPORTATION**

<b>TPIMS INSTALLATION DETAILS</b>			
<b>I-74 WB AT SPOON RIVER REST AREA</b>			
SCALE:	SHEET	OF SHEETS	STA. TO STA.

F.A.I. RTE.	SECTION	COUNTY	TOTAL SHEETS	SHEET NO.
74	(48-29RA)I-28; (X3-16RA)I-15	KNOX WOODFORD	15	9
			CONTRACT NO. 68G77	
			ILLINOIS FED. AID PROJECT	





THE CONTRACTOR SHALL NOTIFY THE DEPARTMENT PRIOR TO ARRANGE FOR IDOT TO BE ON SITE FOR FINAL CAMERA AIMING. THE CONTRACTOR SHALL AIM THE CAMERAS TO THE SATISFACTION OF THE DEPARTMENT. THE COST OF THIS WORK SHALL BE INCLUDED IN THE BID PRICE FOR THE PROPOSED CCTV CAMERAS.



ALIGN CAMERA WITH LANE LINE BETWEEN PARKING STALLS 3 AND 4. CAMERA SHALL BE AIMED TO PROVIDE COVERAGE OF PARKING STALLS 1-6.

ALIGN CAMERA WITH LANE LINE BETWEEN PARKING STALLS 9 AND 10. CAMERA SHALL BE AIMED TO PROVIDE COVERAGE OF PARKING STALLS 7-12.

MODEL: Default  
FILE NAME: G:\COMMON\GENTransfer - Bureau\68G77 - D4 TPMS (revised 3-25-22).dgn

USER NAME = howalter	DESIGNED -	REVISED -
	DRAWN -	REVISED -
PLOT SCALE = 42.9315 * / in.	CHECKED -	REVISED -
PLOT DATE = 3/25/2022	DATE -	REVISED -

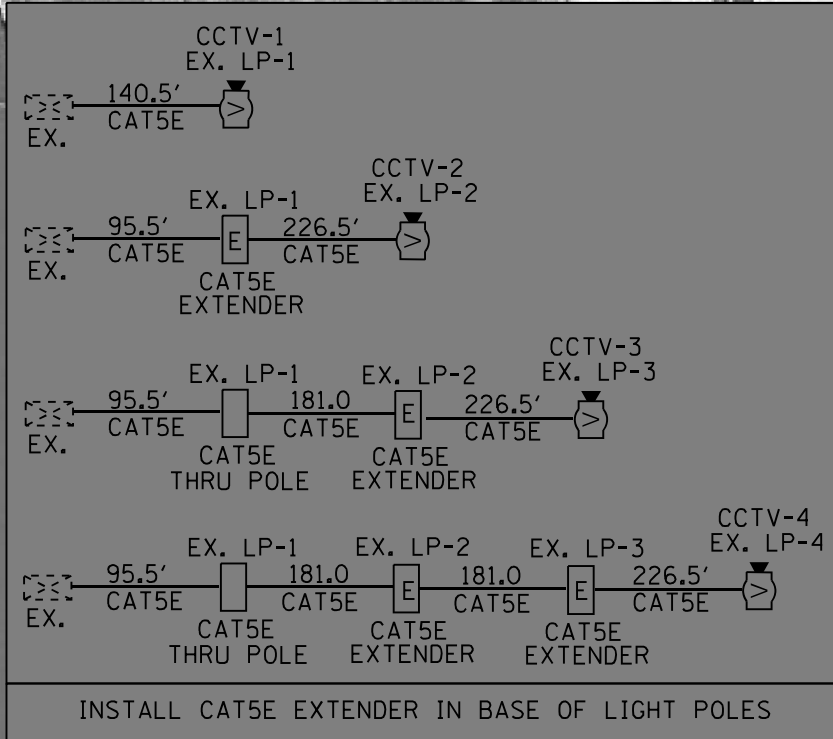
**STATE OF ILLINOIS  
DEPARTMENT OF TRANSPORTATION**

**TPIMS CCTV CAMERA DETAIL  
I-74 WB AT SPOON RIVER REST AREA**

SCALE: SHEET OF SHEETS STA. TO STA.

F.A.I. RTE.	SECTION	COUNTY	TOTAL SHEETS	SHEET NO.
74	(48-29RA)-28; (X3-16RA)-15	KNOX WOODFORD	15	10
CONTRACT NO. 68G77				
ILLINOIS FED. AID PROJECT				

BILL OF MATERIALS - I-74 EB @ MACKINAW DELLS REST AREA		
ITEM DESCRIPTION	UNIT	TOTAL QTY.
UNDERGROUND CONDUIT, PVC, 1 1/4" DIA.	FOOT	593.0
DRILL EXISTING HANDHOLE	EACH	1.0
CAT 5 ETHERNET CABLE	FOOT	1648.0
CLOSED CIRCUIT TELEVISION CAMERA	EACH	4.0
ETHERNET CONVERTOR	EACH	4.0



EXISTING CCTV CAMERA POLE, CCTV CAMERA, AND CCTV EQUIPMENT CABINET

MODEL: Default  
 FILE NAME: G:\COMMON\GEN\Transfer - Bureau\68G77 - Final\Plan\68G77 - D4.TPIMS (Revised 3-25-22).dgn

USER NAME = howalter	DESIGNED -	REVISED -
PLOT SCALE = 42.9315' / in.	DRAWN -	REVISED -
PLOT DATE = 3/25/2022	CHECKED -	REVISED -
	DATE -	REVISED -

STATE OF ILLINOIS  
DEPARTMENT OF TRANSPORTATION

TPIMS INSTALLATION DETAILS  
I-74 EB AT MACKINAW DELLS REST AREA

SCALE: SHEET OF SHEETS STA. TO STA.

F.A.I. RTE.	SECTION	COUNTY	TOTAL SHEETS	SHEET NO.
74	(48-29RA)I-28; (X3-16RA)I-15	KNOX WOODFORD	15	11
ILLINOIS FED. AID PROJECT			CONTRACT NO. 68G77	





CAMERA SHALL BE AIMED TO PROVIDE COVERAGE OF PARKING STALLS 20-24.

CAMERA SHALL BE AIMED TO PROVIDE COVERAGE OF PARKING STALLS 13-20.

CAMERA SHALL BE AIMED TO PROVIDE COVERAGE OF PARKING STALLS 6-12.

CAMERA SHALL BE AIMED TO PROVIDE COVERAGE OF PARKING STALLS 1-5.



THE CONTRACTOR SHALL NOTIFY THE DEPARTMENT PRIOR TO ARRANGE FOR IDOT TO BE ON SITE FOR FINAL CAMERA AIMING. THE CONTRACTOR SHALL AIM THE CAMERAS TO THE SATISFACTION OF THE DEPARTMENT. THE COST OF THIS WORK SHALL BE INCLUDED IN THE BID PRICE FOR THE PROPOSED CCTV CAMERAS.

MODEL: Default  
FILE NAME: G:\COMMON\GEN\Transfer - Bureau\68G77 - D4 TPIMS (Revised 3-25-22).dgn

USER NAME = howalter	DESIGNED -	REVISED -
	DRAWN -	REVISED -
PLOT SCALE = 42.9315' */ in.	CHECKED -	REVISED -
PLOT DATE = 3/25/2022	DATE -	REVISED -

**STATE OF ILLINOIS  
DEPARTMENT OF TRANSPORTATION**

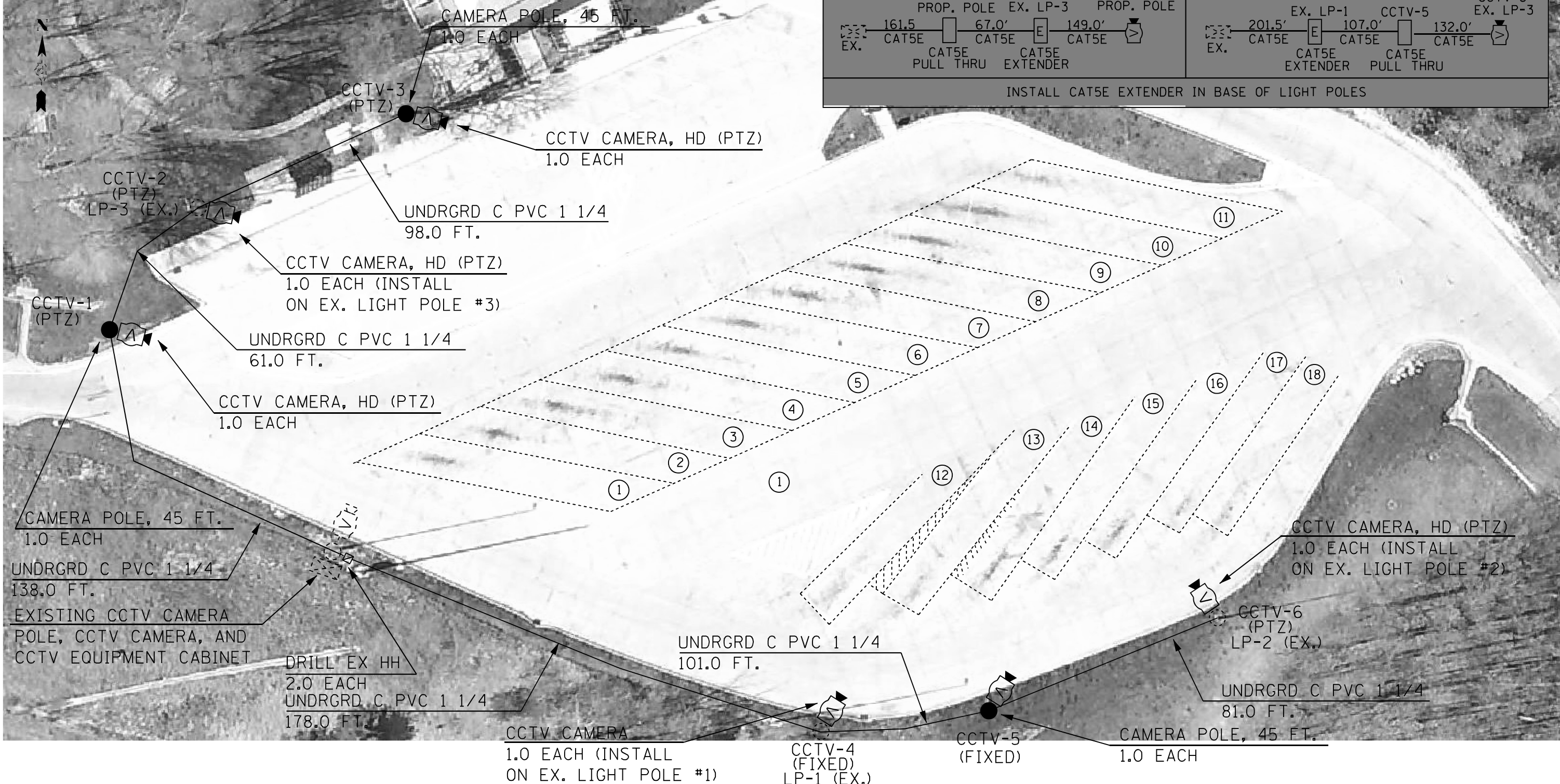
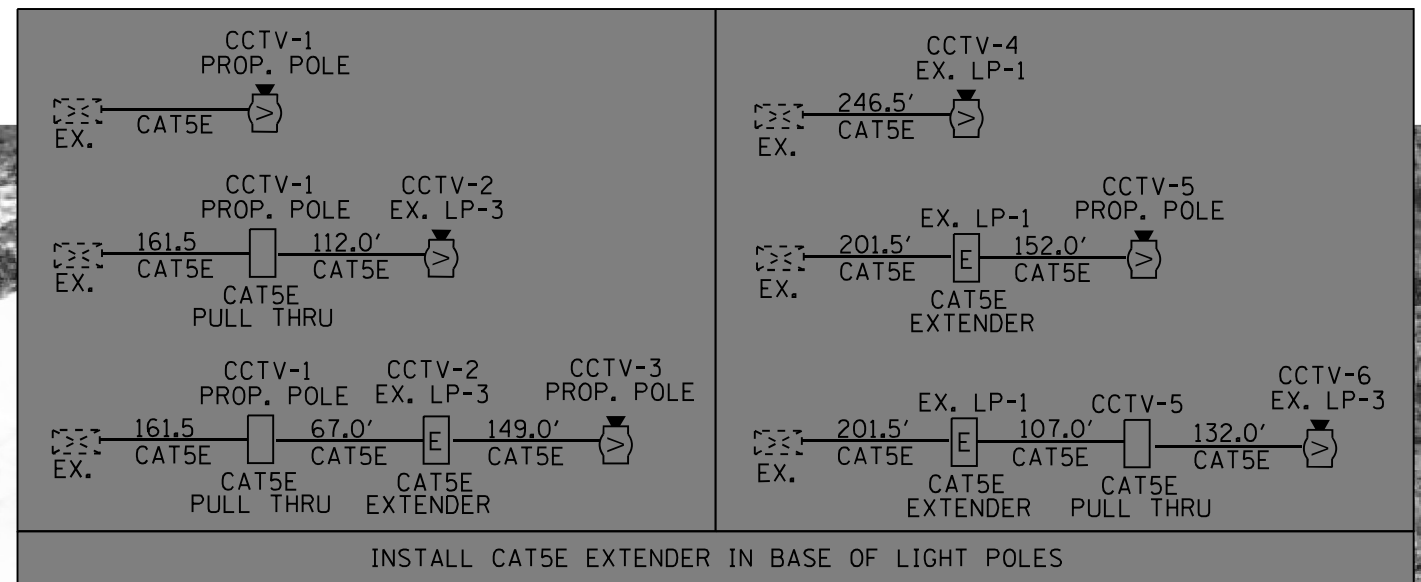
**TPIMS CCTV CAMERA DETAIL  
I-74 EB AT MACKINAW DELLS REST AREA**

SCALE: SHEET OF SHEETS STA. TO STA.

F.A.I. RTE.	SECTION	COUNTY	TOTAL SHEETS	SHEET NO.
74	(48-29RA)-28; (X3-16RA)-15	KNOX WOODFORD	15	12
CONTRACT NO. 68G77				
ILLINOIS FED. AID PROJECT				



BILL OF MATERIALS - I-74 WB @ MACKINAW DELLS REST AREA		
ITEM DESCRIPTION	UNIT	TOTAL QTY.
UNDERGROUND CONDUIT, PVC, 1 1/4" DIA.	FOOT	657.0
DRILL EXISTING HANDHOLE	EACH	1.0
CAMERA POLE, 45 FT	EACH	3.0
CAT 5 ETHERNET CABLE	FOOT	1895.0
CLOSED CIRCUIT TELEVISION CAMERA	EACH	2.0
CLOSED CIRCUIT TELEVISION DOME CAMERA, HD	EACH	4.0
ETHERNET CONVERTOR	EACH	3.0



MODEL: Default  
 FILE NAME: G:\COMMON\GEN\TRANSFER - Bureau\68G77 - DA TPIMS (revised 3-25-22).dgn  
 3/25/2022

USER NAME = howalter	DESIGNED -	REVISED -
PLOT SCALE = 42.9315' / in.	DRAWN -	REVISED -
PLOT DATE = 3/25/2022	CHECKED -	REVISED -
	DATE -	REVISED -

**STATE OF ILLINOIS**  
**DEPARTMENT OF TRANSPORTATION**

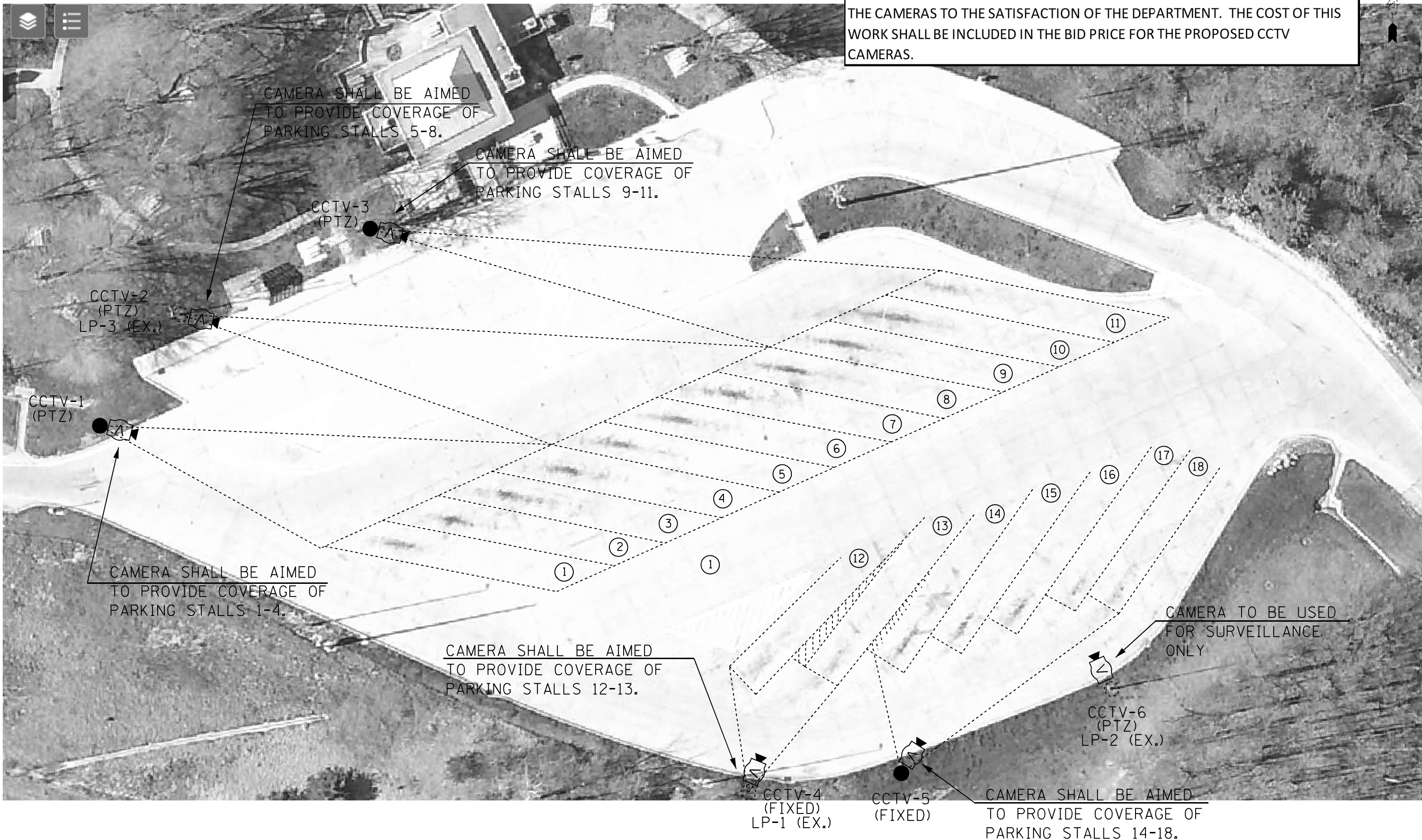
**TPIMS INSTALLATION DETAILS**  
**I-74 WB AT MACKINAW DELLS REST AREA**

SCALE: SHEET OF SHEETS STA. TO STA.

F.A.I. RTE.	SECTION	COUNTY	TOTAL SHEETS	SHEET NO.
74	(48-29RA)-28; (X3-16RA)-15	KNOX WOODFORD	15	13

ILLINOIS FED. AID PROJECT CONTRACT NO. 68G77

THE CONTRACTOR SHALL NOTIFY THE DEPARTMENT PRIOR TO ARRANGE FOR IDOT TO BE ON SITE FOR FINAL CAMERA AIMING. THE CONTRACTOR SHALL AIM THE CAMERAS TO THE SATISFACTION OF THE DEPARTMENT. THE COST OF THIS WORK SHALL BE INCLUDED IN THE BID PRICE FOR THE PROPOSED CCTV CAMERAS.



CAMERA SHALL BE AIMED TO PROVIDE COVERAGE OF PARKING STALLS 5-8.

CAMERA SHALL BE AIMED TO PROVIDE COVERAGE OF PARKING STALLS 9-11.

CCTV-2 (PTZ) LP-3 (EX.)

CCTV-1 (PTZ)

CAMERA SHALL BE AIMED TO PROVIDE COVERAGE OF PARKING STALLS 1-4.

CAMERA SHALL BE AIMED TO PROVIDE COVERAGE OF PARKING STALLS 12-13.

CAMERA TO BE USED FOR SURVEILLANCE ONLY

CCTV-6 (PTZ) LP-2 (EX.)

CCTV-4 (FIXED) LP-1 (EX.)

CCTV-5 (FIXED)

CAMERA SHALL BE AIMED TO PROVIDE COVERAGE OF PARKING STALLS 14-18.

MODEL: Default  
FILE NAME: G:\COMMON\GENTransfer - Bureau\68G77 - Final\Plan\68G77 - DA TPIMS (revised 3-25-22).dgn

USER NAME = howalter	DESIGNED -	REVISED -
	DRAWN -	REVISED -
PLOT SCALE = 42.9315' */ in.	CHECKED -	REVISED -
PLOT DATE = 3/25/2022	DATE -	REVISED -

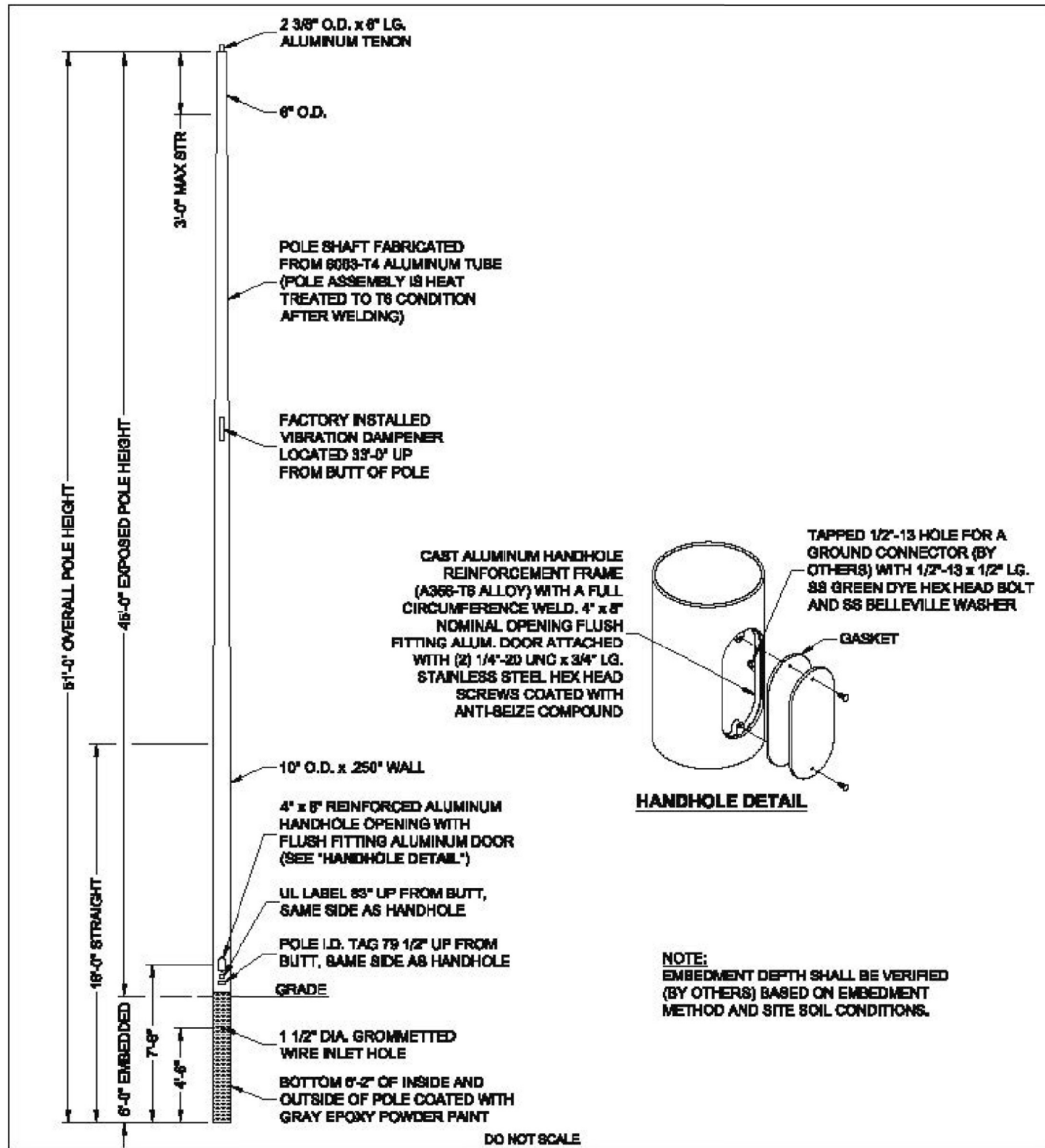
**STATE OF ILLINOIS  
DEPARTMENT OF TRANSPORTATION**

**TPIMS CCTV CAMERA DETAIL  
I-74 WB AT MACKINAW DELLS REST AREA**

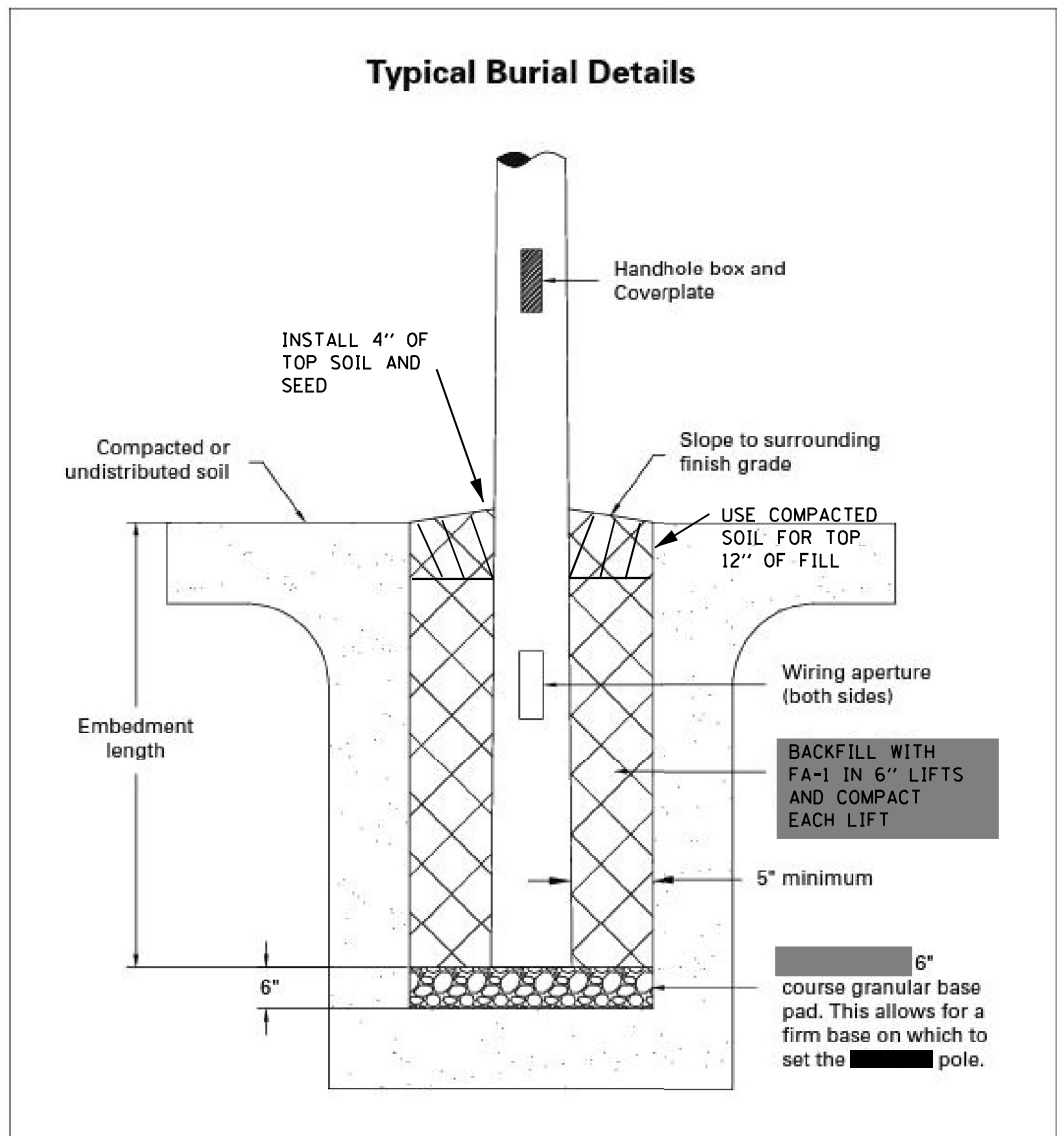
SCALE: SHEET OF SHEETS STA. TO STA.

F.A.I. RTE.	SECTION	COUNTY	TOTAL SHEETS	SHEET NO.
74	(48-29RA)I-28; (X3-16RA)I-15	KNOX WOODFORD	15	14
ILLINOIS FED. AID PROJECT CONTRACT NO. 68G77				





THE PROPOSED CCTV CAMERA POLE SHALL BE DESIGNED IN ACCORDANCE WITH ARTICLE 1069.01 OF THE STANDARD SPECIFICATIONS. CAMERA POLES SHALL BE DESIGNED TO THE LATEST AASHTO SPECIFICATIONS WHICH SPECIFIES THAT LIGHT POLES SHALL BE DESIGNED FOR 90 MPH WIND VELOCITY AND A MINIMUM DESIGN LIFE OF 50 YEARS. THE CAMERA POLE SHALL BE EQUIPPED WITH A FACTORY INSTALLED VIBRATION DAMPENER, 4" X 8" REINFORCED HANDHOLE, AND HAVE A 0.250" MINIMUM WALL THICKNESS.



- THE CONTRACTOR SHALL INSTALL THE PROPOSED DIRECT BURIED CCTV CAMERA POLE BY FOLLOWING THE STEPS LISTED BELOW:
1. AUGER A HOLE THAT IS APPROXIMATELY TWICE THE DIAMETER OF THE PROPOSED CAMERA POLE. THE HOLE SHALL BE ROUND AND HAVE SMOOTH VERTICAL SIDES WITH UNDISTURBED SOIL.
  2. INSTALL A 6" COARSE GRANULAR BASE PAD TO PROVIDE A FIRM BASE TO SET THE POLE ON. TAMP BASE PAD PRIOR TO SETTING POLE.
  3. LOWER THE POLE INTO THE HOLE WHILE GUIDING THE PROPOSED CONDUITS THROUGH THE CABLE ENTRANCE HOLES TO THE HANDHOLE. THE CONTRACTOR SHALL INSTALL 90 DEGREE ELBOWS OR FLEXIBLE CONDUIT AS REQUIRED TO FACILITATE INSTALLATION OF THE PROPOSED CONDUIT INTO THE POLE BASE.
  4. PLUMB AND ALIGN THE POLE USING A PLUMB-BOB METHOD OR OTHER SUITABLE METHOD. MAKE SURE THE POLE IS ALIGNED BEFORE BACKFILLING.
  5. BACKFILL THE HOLE IN 6 INCH LIFTS USING FA-1 OR OTHER DEPARTMENT APPROVED FILL MATERIAL. CHECK THAT POLE IS LEVEL AND FIRMLY TAMP AFTER EACH LIFT. THE TOP 12 INCHES SHALL BE COMPACTED SOIL.
  6. SLOPE TO EXISTING FINISHED GRADE AROUND ALL SIDES OF POLE TO PREVENT WATER FROM DRAINING BACK INTO THE POLE. INSTALL 4" OF TOP SOIL AND SEED BARE AREAS TO PREVENT EROSION.

MODEL: Default  
FILE NAME: G:\COMMON\GENT\Tender - Bureau\68G77 - Da TRMS (revised 3-25-22).dgn

USER NAME = howalter	DESIGNED -	REVISED -
PLOT SCALE = 42.9315 * / in.	DRAWN -	REVISED -
PLOT DATE = 3/25/2022	CHECKED -	REVISED -
	DATE -	REVISED -

STATE OF ILLINOIS  
DEPARTMENT OF TRANSPORTATION

CAMERA POLE DETAIL

SCALE: SHEET OF SHEETS STA. TO STA.

F.A.I. RTE.	SECTION	COUNTY	TOTAL SHEETS	SHEET NO.
74	(48-29RA)-28; (X3-16RA)-15	KNOX WOODFORD	15	15
CONTRACT NO. 68G77				
ILLINOIS FED. AID PROJECT				

