

STATE OF ILLINOIS 04-29-2022 LETTING ITEM 085
 DEPARTMENT OF TRANSPORTATION

F.A.U. RTE.	SECTION	COUNTY	TOTAL SHEETS	SHEET NO.
2690	2021-131-1	COOK	13	1
FED. AID PROJECT	ILLINOIS	CONTRACT NO. 62P53		

ROBERT J. DEMING
 062-057483
 LICENSED PROFESSIONAL ENGINEER
 ILLINOIS
 EXPIRES: 11/30/2023

PRIMERA ENGINEERS LTD.
 ROBERT J. DEMING, P.E.
 DATE: 02/02/2022
 SIGNATURE AND SEAL
 APPLY TO DRAWINGS: 1-6
 1-6

JOHN D. PERADOTTI
 062-059081
 LICENSED PROFESSIONAL ENGINEER
 ILLINOIS
 EXPIRES: 11/30/2022

GONZALEZ COMANIES, LLC
 JOHN PERADOTTI, P.E., S.E.
 DATE: 02/02/2022
 SIGNATURE AND SEAL
 APPLY TO DRAWINGS: 8-11

EMILY R. BERGNER
 062-059081
 LICENSED PROFESSIONAL ENGINEER
 ILLINOIS
 EXPIRES: 11/30/2023

FLUIDCLARITY LTD.
 EMILY BERGNER, P.E., CFM
 DATE: 02/02/2022
 SIGNATURE AND SEAL
 APPLY TO DRAWINGS: 7

PROPOSED HIGHWAY PLANS

FAU 2690
 WOLF ROAD
 OVER ADDISON CREEK
 SECTION 2021-131-1
 CULVERT WINGWALL REPAIRS (S.N. 016-2423)
 COOK COUNTY

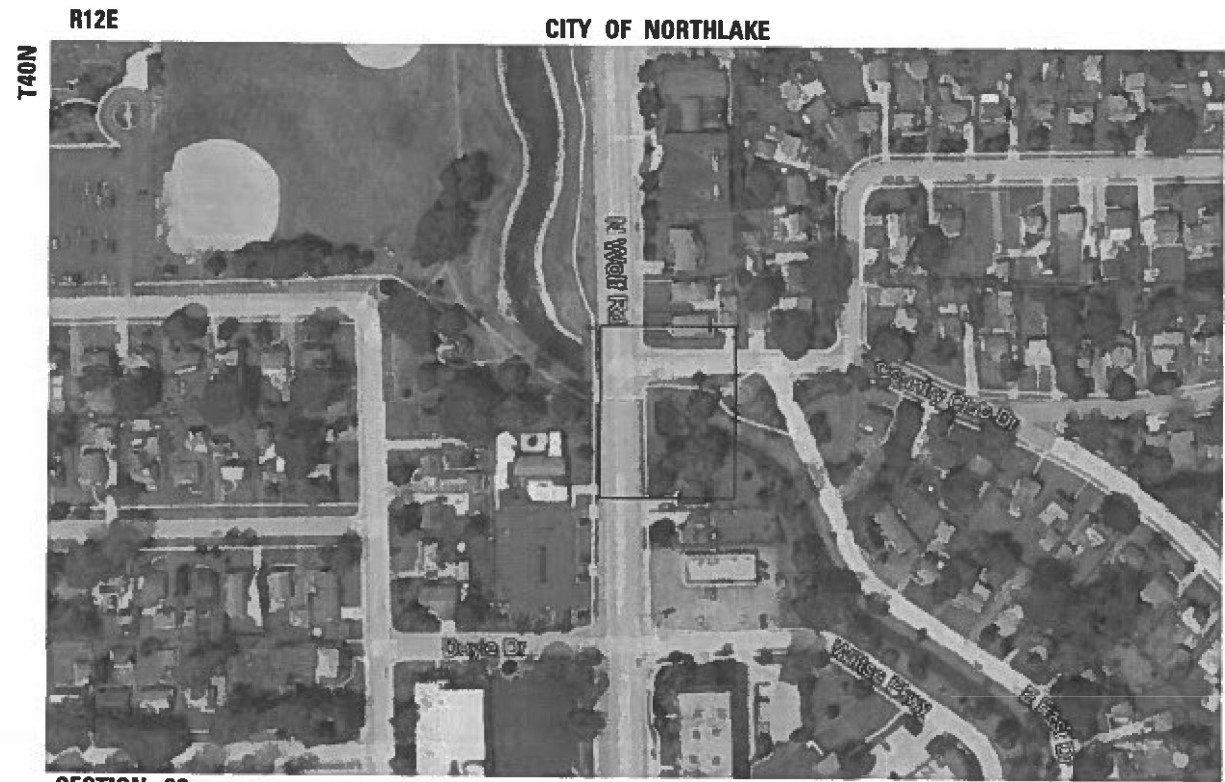


FOR INDEX OF SHEETS, SEE SHEET NO. 2

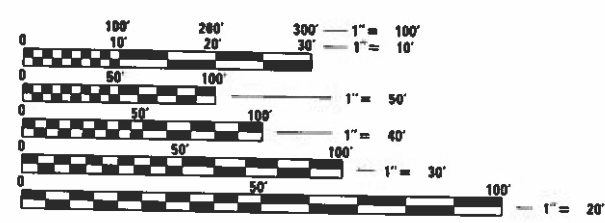
PROJECT IS LOCATED IN THE CITY OF NORTHLAKE IN COOK COUNTY

TRAFFIC DATA:
 FUNCTIONAL CLASSIFICATION
 MAJOR COLLECTOR
 2018 ADT = 11300
 SPEED LIMIT = 30 MPH

C-91-004-22



N
 LOCATION MAP NOT TO SCALE



FULL SIZE PLANS HAVE BEEN PREPARED USING STANDARD ENGINEERING SCALES. REDUCED SIZED PLANS WILL NOT CONFORM TO STANDARD SCALES. IN MAKING MEASUREMENTS ON REDUCED PLANS, THE ABOVE SCALES MAY BE USED.

J.U.L.I.E.
 JOINT UTILITY LOCATION INFORMATION FOR EXCAVATORS
 1-800-892-0123
 OR 811

PROJECT ENGINEER PRAVEEN KAINI, PE (847) 705-4237
 PROJECT MANAGER J. ALAIN MIDY, PE (847) 221-3056
 CONTRACT NO. 62P53

Primera
 600 N. MADISON ROAD, SUITE 800, DEERFIELD, IL 60015, P: 847-940-1200 F: 847-940-1201

GROSS LENGTH = 200 FT. = 0.038 MILE
 NET LENGTH = 200 FT. = 0.038 MILE

gonzalez
 GONZALEZ COMPANIES, LLC
 515 WEST MAIN STREET
 SUITE 115
 BELLEVILLE, IL 62220
 PHONE: (618) 222-2221
 WWW.GONZALEZCOS.COM
 ILLINOIS PROFESSIONAL DESIGN FIRM 184.004584

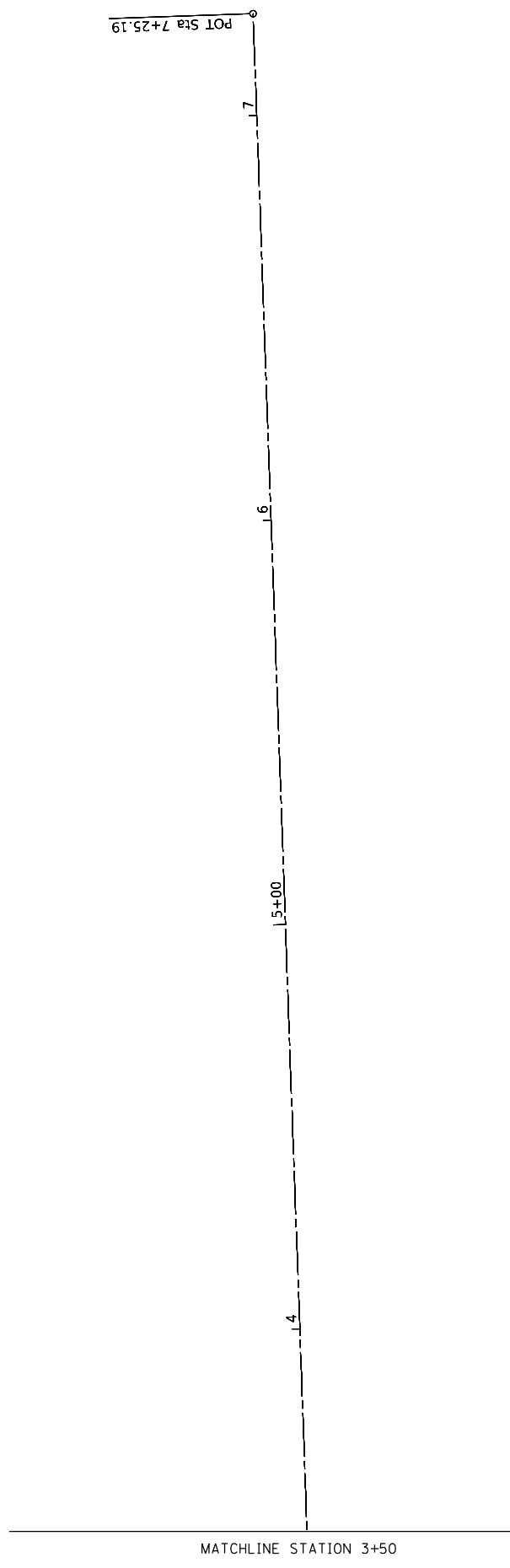
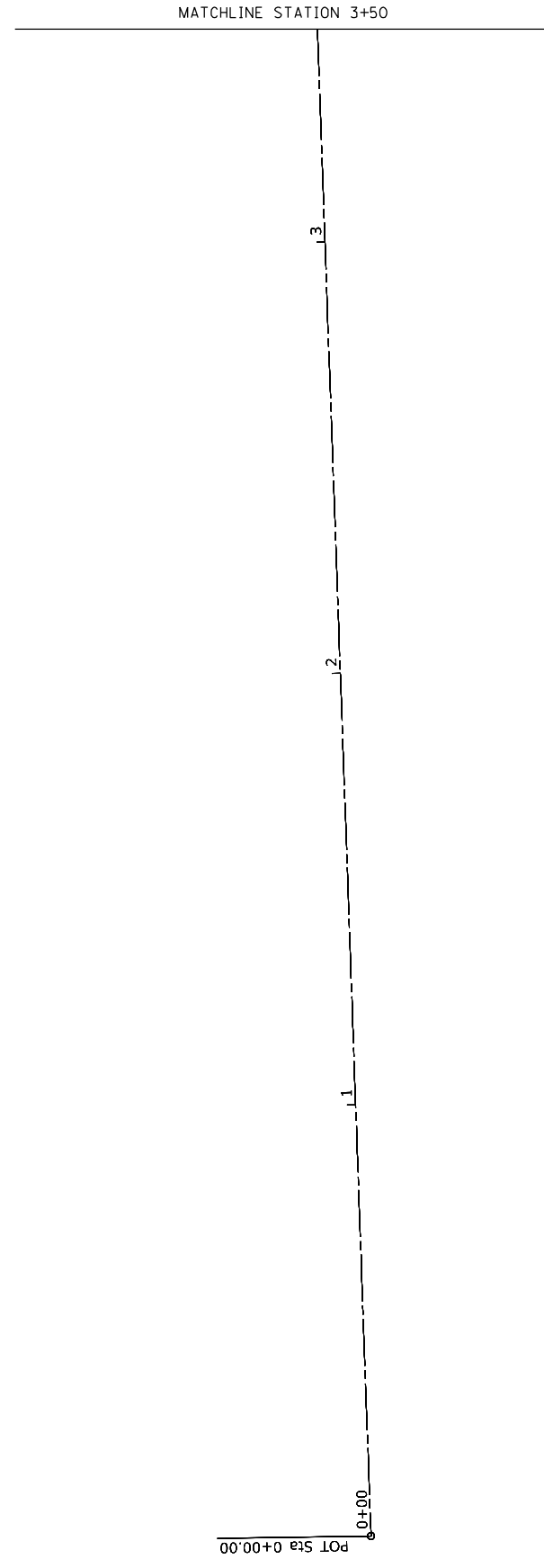
fluidclarity

STATE OF ILLINOIS
 DEPARTMENT OF TRANSPORTATION

SUBMITTED February 8, 2022
 Joe Piro, 1043 REGIONAL ENGINEER
 March 25, 2022
 Stephen M. Smith, ENGINEER OF DESIGN AND ENVIRONMENT
 March 25, 2022
 Stephen M. Smith, DIRECTOR OF HIGHWAYS PROJECT IMPLEMENTATION

PRINTED BY THE AUTHORITY OF THE STATE OF ILLINOIS

MODEL: Default
 FILE NAME: C:\Users\primera\OneDrive\Documents\01 - Project\2020\20200425_00 - IDOT Phase II Veribus Design\20200425_06_W05 Wolf Road Over Addison Creek\Drawings\Current Drawings Files\CADD_Sheets\Benchmarks\Benchmarks.dwg
 401 N. JACKSON BLVD, SUITE 400, CHICAGO IL 60611, P.312-467-4000 F.312-467-4005



BENCHMARK 100
 CHISELED X ON SIDEWALK AT STA 5+97.18 99.68' RT

BENCHMARK 101
 CHISELED X ON SIDEWALK AT STA 4+78.89 37.12' RT



USER NAME = rvandermus	DESIGNED - RM/RMV	REVISED -
	DRAWN - RM/RMV	REVISED -
PLOT SCALE = 40,0000 * / in.	CHECKED - MPV	REVISED -
PLOT DATE = 2/9/2022	DATE - 07/07/2021	REVISED -

**STATE OF ILLINOIS
 DEPARTMENT OF TRANSPORTATION**

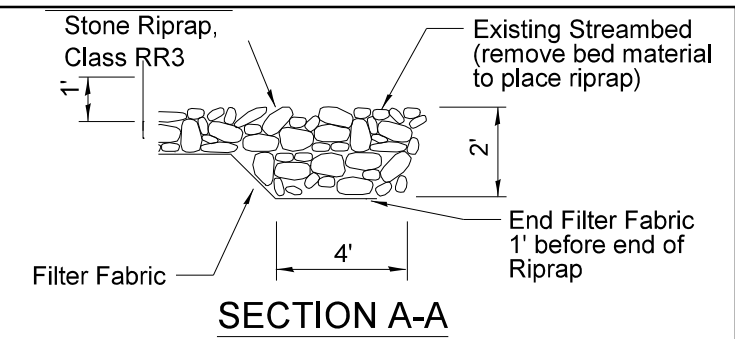
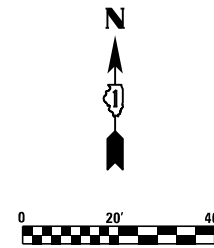
**ALIGNMENT, TIES & BENCHMARKS
 WOLF ROAD BRIDGE OVER ADDISON CREEK**

SCALE: SHEET OF SHEETS STA. TO STA.

F.A.U. RTE.	SECTION	COUNTY	TOTAL SHEETS	SHEET NO.
2690	2021-131-I	COOK	13	4
CONTRACT NO. 62P53				
ILLINOIS FED. AID PROJECT				

EROSION CONTROL NOTES:

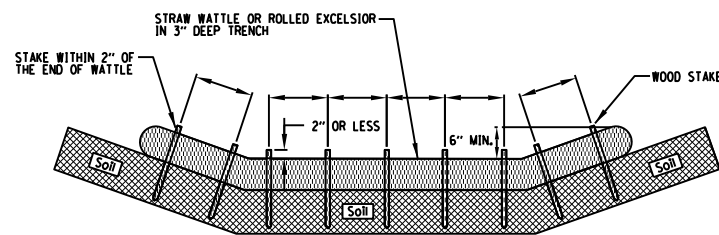
1. STREAMBANK SLOPE DISTURBED BY WINGWALL INSTALLATION SHALL BE COVERED WITH HEAVY DUTY EROSION CONTROL BLANKET, SEEDED WITH CLASS 3 SEEDING, AND HAVE (G20030Y2) SEEDLING CORNUS AMOMUM (SILKY DOGWOOD), 2-YEAR OLD, BARE ROOT AND (F30170Y2) SEEDLING, SALIX NIGRA (BLACK WILLOW), 2-YEAR OLD, BARE ROOT. PLANT MATERIAL SHALL ONLY BE PLACED IN AREAS OF SLOPE DISTURBANCE IN ADDITION TO SEEDING, CLASS 3. QUANTITIES ARE ONLY ESTIMATED AND EXACT QUANTITY WILL BE DETERMINED UPON THE SIZE OF AREA DISTURBED.
2. GRASSED AREAS DISTURBED BY CONSTRUCTION (OTHER THAN STREAMBANK SLOPES) SHALL BE SODDED WITH SALT TOLERANT SODDING.
3. CONTRACTOR IS RESPONSIBLE FOR MAINTENANCE/REPAIR OF EROSION CONTROL MEASURES UNTIL ADEQUATE VEGETATION GROWTH HAS OCCURRED.
4. TEMPORARY DITCH CHECKS SHALL BE INSTALLED ACROSS THE ENTIRE CHANNEL AT 50' AND 70' DOWNSTREAM (EAST) OF THE EAST CULVERT FACE, PER THE DETAIL.



CHANNEL RIPRAP INSTALLATION DETAIL
(NTS)

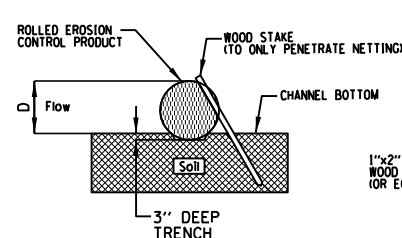
ROLLED EROSION CONTROL PRODUCTS

STAKING PATTERN GUIDE

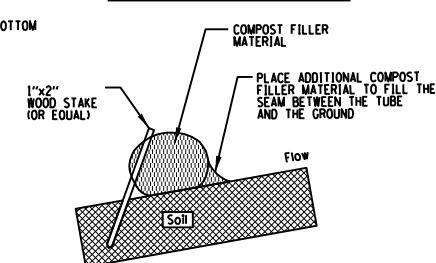


- NOTES:
1. OVERLAP MINIMUM IS THE DIAMETER OF THE ROLL.
 2. 4' SPACING FOR WATTLES.
 3. 2' SPACING FOR ROLLED EXCELSIOR.
 4. OR SPACE ACCORDING TO MANUFACTURER'S SPECIFICATIONS.

STAKE DETAIL



COMPOST FILTER SOCK DETAIL

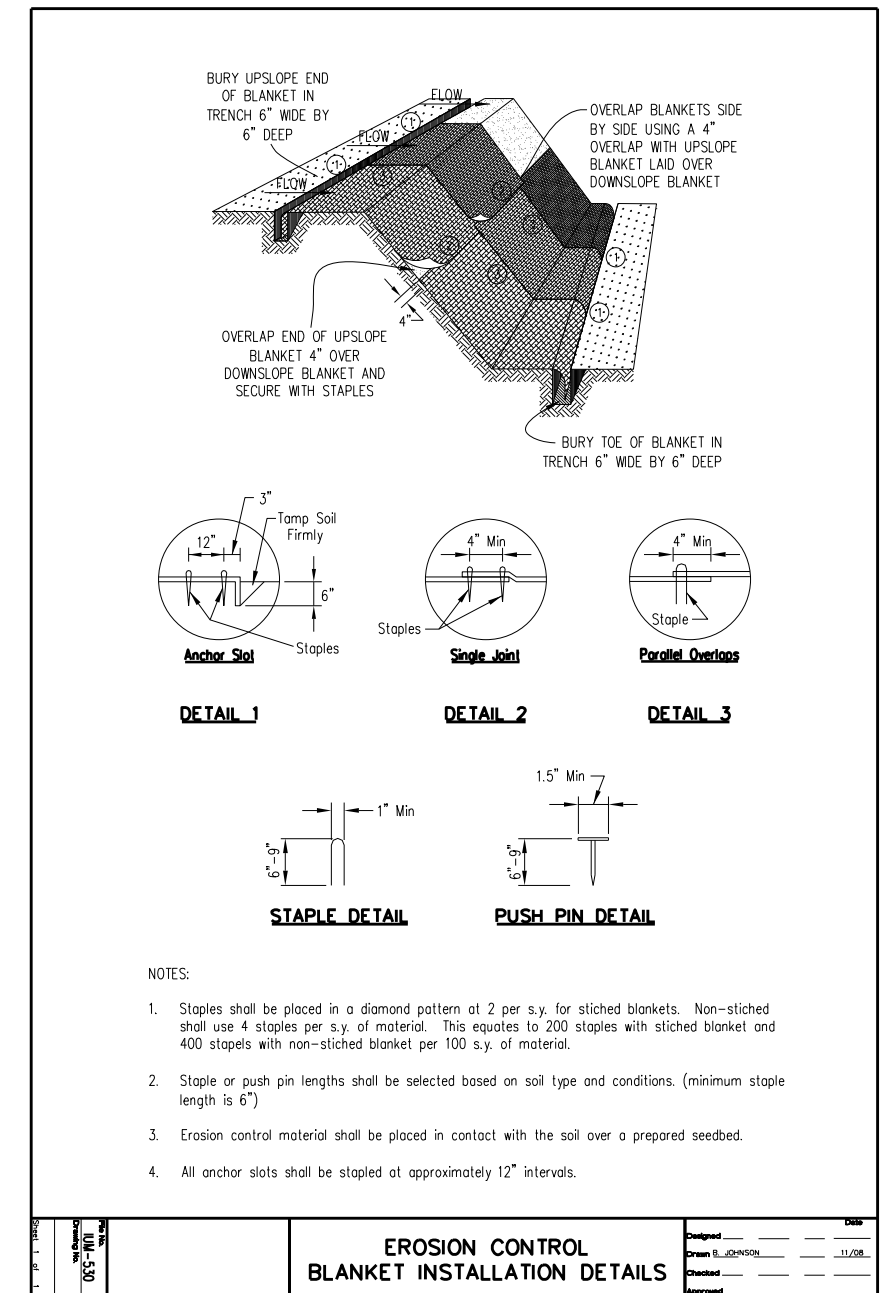
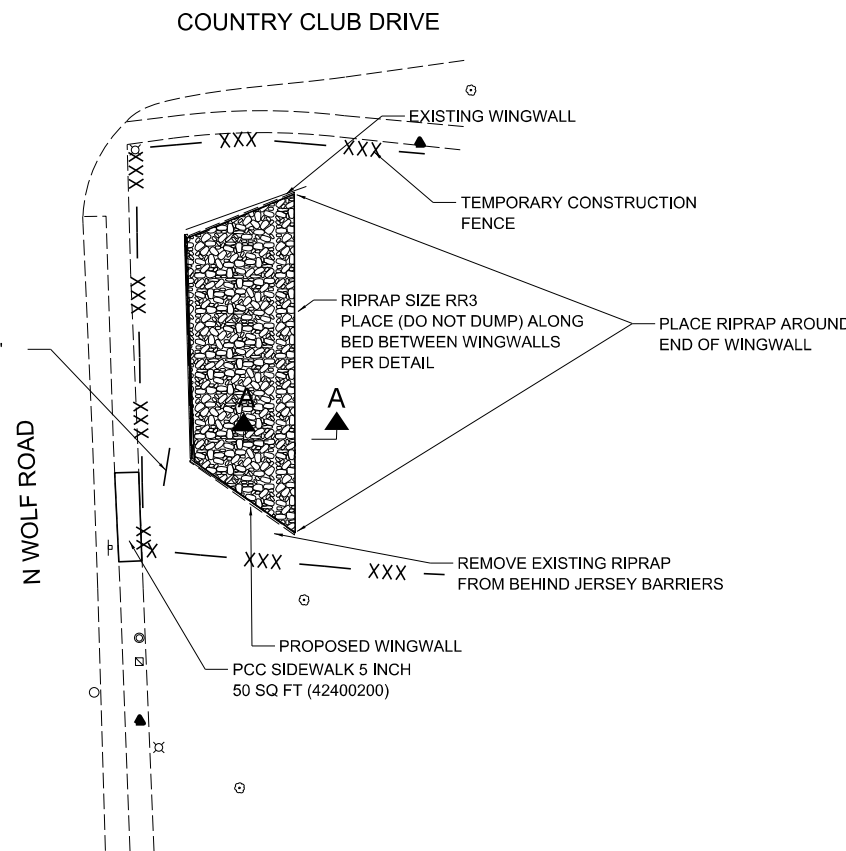


WHEN COMPOST FILTER SOCK DITCH CHECK IS USED, PLACE A COMPOST BERM UPSTREAM OF THE FILTER SOCK (SEE IUM 805). A TRENCH IS NOT REQUIRED.

- NOTES:
1. DRAWINGS ARE NOT TO SCALE.
 2. ENDS OF WATTLES OR ROLLED EXCELSIOR SHALL BE TURNED AT LEAST 6" UPSLOPE.
 3. RECOMMENDED STAKES ARE 1 1/8" WIDE x 1 1/8" THICK x 30" LONG.
 4. STAKES SHALL NOT EXTEND ABOVE THE STRAW WATTLE MORE THAN 2".
 5. SPACING: THE TOE OF THE UPSLOPE DITCH CHECK SHALL CREATE A HORIZONTAL LINE WITH THE TOP OF THE DOWNSLOPE DITCH CHECK.
 6. WHEN COMPOST FILTER SOCK DITCH CHECK IS USED, PLACE A COMPOST BERM UPSTREAM OF THE FILTER SOCK (SEE IUM 805). A TRENCH IS NOT REQUIRED.

REFERENCE	STANDARD DWG. NO.
Project _____	IUM-514
Designed _____ Date _____	SHEET 1 OF 1
Checked _____ Date _____	DATE 08-19-2011
Approved _____ Date _____	

STORM SEWERS, CLASS A, TYPE 1 18"
2.5 FT (550A0090)
N INV: 640
S INV: MATCH EXISTING



- NOTES:
1. Staples shall be placed in a diamond pattern at 2 per s.y. for stitched blankets. Non-stitched shall use 4 staples per s.y. of material. This equates to 200 staples with stitched blanket and 400 staples with non-stitched blanket per 100 s.y. of material.
 2. Staple or push pin lengths shall be selected based on soil type and conditions. (minimum staple length is 6")
 3. Erosion control material shall be placed in contact with the soil over a prepared seedbed.
 4. All anchor slots shall be stapled at approximately 12" intervals.

EROSION CONTROL BLANKET INSTALLATION DETAILS

STATE OF ILLINOIS
DEPARTMENT OF TRANSPORTATION

SOIL EROSION AND SEDIMENT CONTROL PLAN AND SCOUR PLAN
WOLF ROAD BRIDGE OVER ADDISON CREEK

F.A.P. RTE.	SECTION	COUNTY	TOTAL SHEETS	SHEET NO.
2690	2021-131-I	COOK	12	7
CONTRACT NO. 62P53				
ILLINOIS FED. AID PROJECT				

MODEL: DEFAULT
FILE NAME: D:\2020\2020-SE\Scan\EROSION\Problem\sheet.dgn



USER NAME = ERB	DESIGNED - ERB	REVISED 3/11/2022
PLOT SCALE = 1"=20'	DRAWN - ERB	REVISED -
PLOT DATE = 1/28/2022	CHECKED - MK	REVISED -
	DATE - 1/28/2022	REVISED -

SCALE: 1"=20' SHEET OF SHEETS STA. TO STA.

Benchmark
Chiseled "X" in the sidewalk
North East of Culvert: TBM 100, El. 644.39
South of Culvert: TBM 101, El. 646.18

Existing Structure
Triple Box Culvert SN 016-2423
Variable Spans, 8'-0" Rise
Built 1932, Extended 1957

TOTAL BILL OF MATERIAL

ITEM	UNIT	TOTAL
Porous Granular Embankment	Cu Yd	90
Concrete Removal	Cu Yd	13.1
Structure Excavation	Cu Yd	119
Pedestrian Railing	Foot	47
* Precast Concrete Substructure	L Sum	1
* Chain Link Fence Removal	Foot	51
* Structural Repair of Concrete (Depth Equal To or Less than 5 inches)	Sq Ft	50.0
* Structural Repair of Concrete (Depth Greater than 5 inches)	Sq Ft	10.0

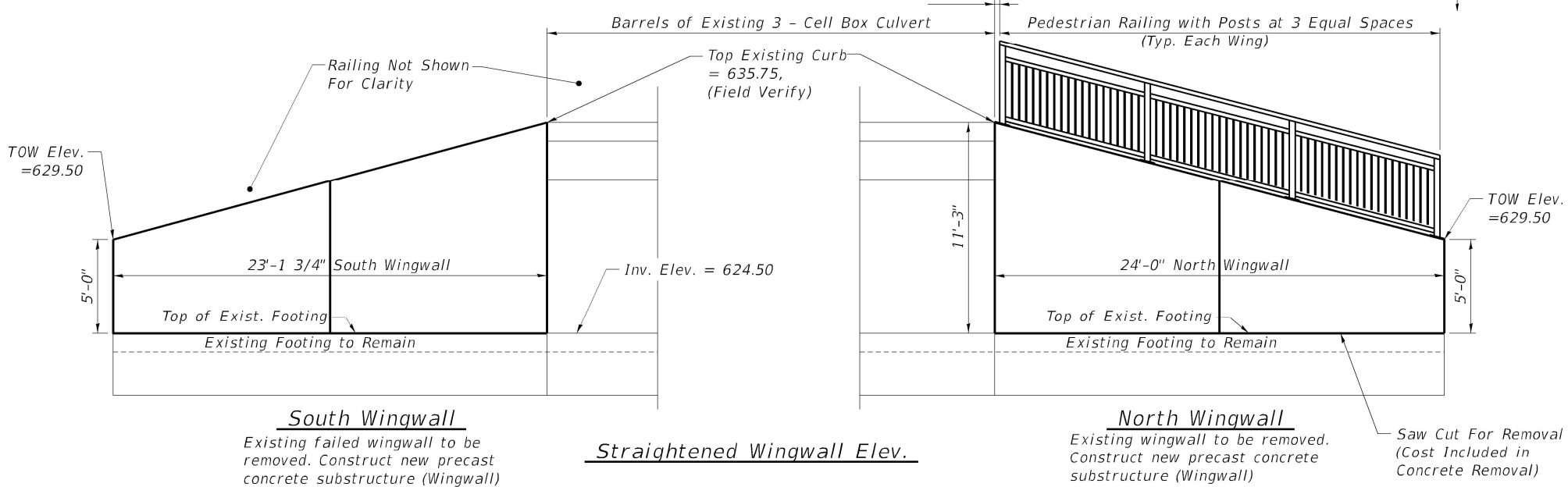
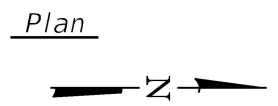
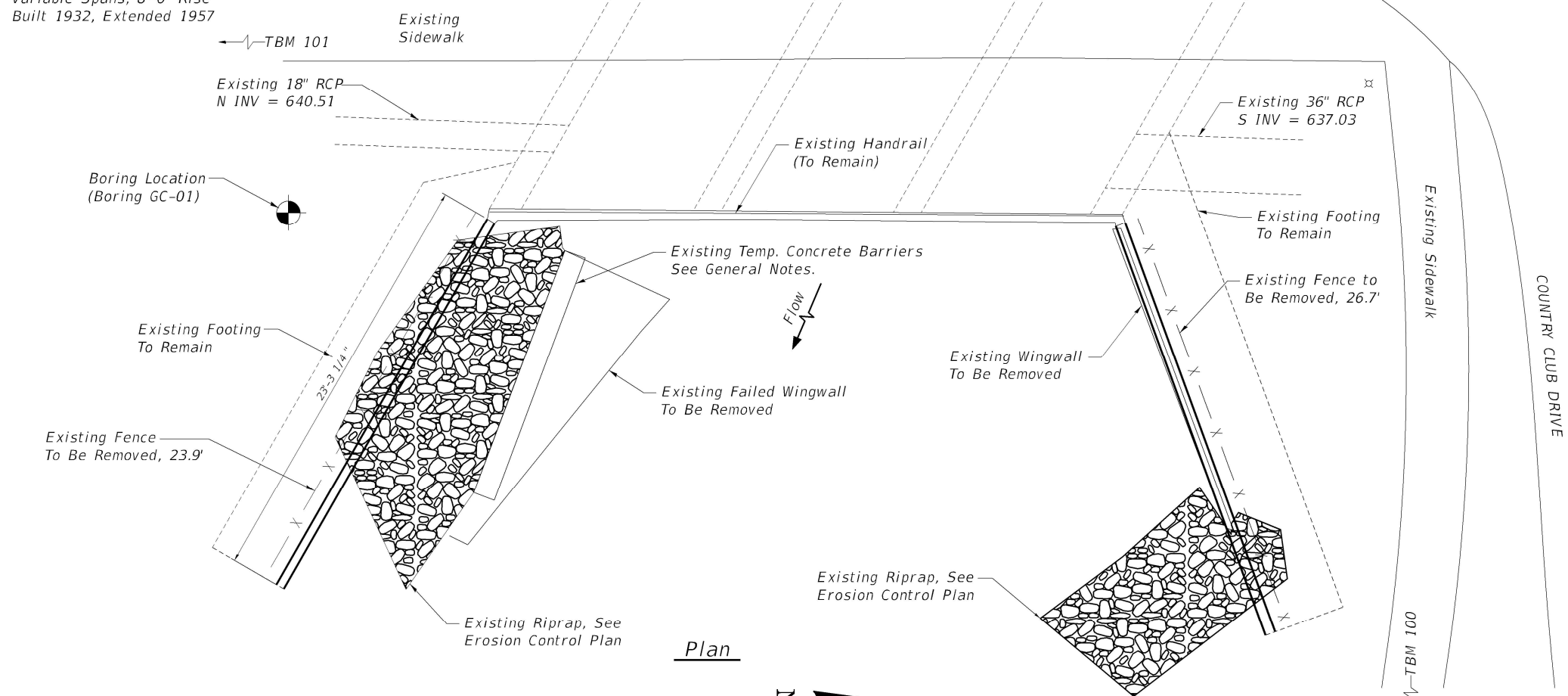
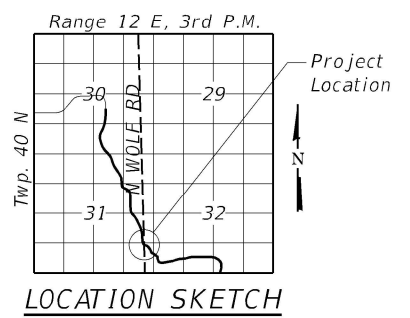
* See Special Provisions

DESIGN SPECIFICATIONS
2020 AASHTO LRFD Bridge Design Specifications, 9th Edition

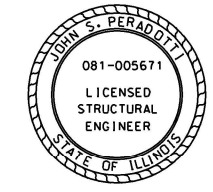
DESIGN STRESSES

FIELD UNITS
 $f'_c = 3,500$ psi
 $f_y = 60,000$ psi (Reinforcement)
 $f_y = 50,000$ psi (AASHTO M270 Grade 50)

PRECAST UNITS
 $f'_c = 5,000$ psi
 $f_y = 60,000$ psi (Reinforcement)
 $f_y = 65,000$ psi (WWR)



- GENERAL NOTES**
1. Plan dimensions and details relative to the existing plans are subject to nominal construction variations. The Contractor shall field verify existing dimensions and details affecting new construction and make necessary approved adjustments prior to construction or ordering materials. Such variations shall not be cause for additional compensation for a change in scope of the work. However, the Contractor will be paid for the quantity actually furnished at the unit price bid for the work.
 2. The Contractor shall take extra care during removal of the existing wingwall adjacent to existing culvert and storm sewer as to not damage or undermine the existing foundation(s).
 3. All exposed concrete edges shall be chamfered 3/4" except where noted.
 4. All structural steel shall conform to the requirements of AASHTO M270 Grade 50.
 5. Refer to Structure Geotechnical Report for site preparation and backfilling.
 6. See Erosion Control Sheets for Layout of the Slope Protection System.
 7. See Erosion Control Plan for Riprap placement (existing and proposed).
 8. The existing concrete barriers shall be removed, salvaged and placed within the ROW. The IDOT District 1 maintenance department shall be contacted for removal and possession. The cost for this work shall be included in the cost per Cubic Yard for Concrete Removal.
 9. Removal of existing wingwall shall be measured and payed for as concrete removal.



John S. Peradotti
John S. Peradotti
Salem, Illinois
Illinois Licensed Structural Engineer No. 081-005671
Expires Nov. 30, 2022
Date Signed Jan. 25, 2022

Note:
The contractor shall be responsible for diverting the water flow from the construction area using a method meeting approval of the Engineer. Cost shall be included with Precast Concrete Substructure.

GONZALEZ COMPANIES, LLC
7 CARPENTER DRIVE
SALEM, IL 62881
PHONE (618) 222-2221
www.gonzalezcos.com
ILLINOIS PROFESSIONAL DESIGN FIRM 184.004564

DESIGNED - JSP	REVISED -
CHECKED - GLH	REVISED -
DRAWN - KMA/JMW	REVISED -
DATE - 02/09/2022	REVISED -

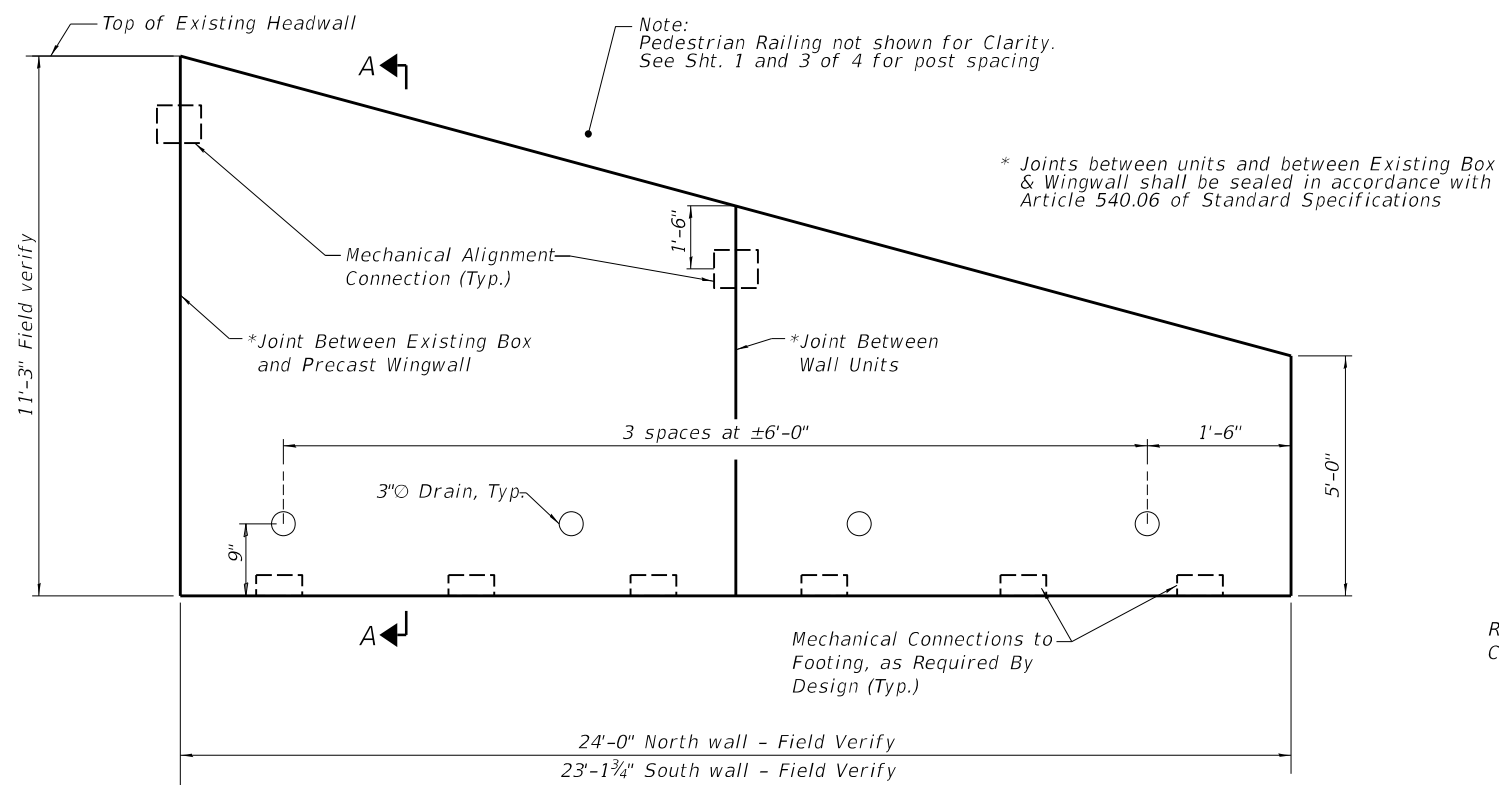
STATE OF ILLINOIS
DEPARTMENT OF TRANSPORTATION

GENERAL PLAN AND ELEVATION
BRIDGE SHEET 1 OF 4

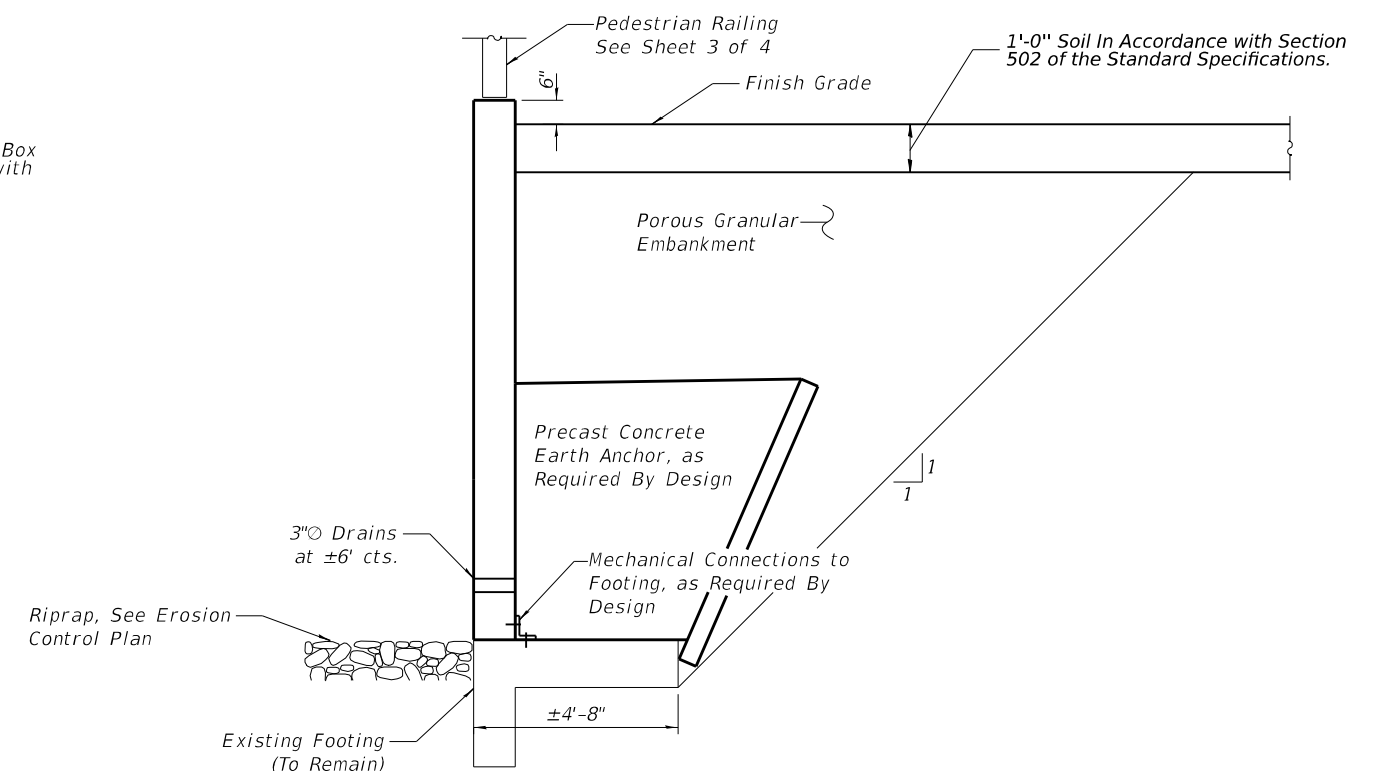
F.A.U. RTE.	SECTION	COUNTY	TOTAL SHEETS	SHEET NO.
2690	2021-13-I	COOK	13	8
CONTRACT NO. 62P53			ILLINOIS FED. AID PROJECT	

GCL Job No. 20-114-05

Note:
 The Existing Footings shall be repaired as directed by Engineer and paid for as Structural Repair of Concrete.
 Quantity of Concrete Repair shown is estimated, actual areas shall be determined by Engineer in field.
 Drill and epoxy grout anchors in accordance with Section 584 of the IDOT Standard Specifications.
 Temporary shoring may be required to protect existing utilities as directed by Engineer, Cost included in the Price of Precast Concrete Substructure.



WALL ELEVATION DETAIL
 North Wingwall Shown, South Wingwall Similar



BILL OF MATERIAL

Item	Unit	Quantity
Precast Concrete Substructure	L Sum	1
Structural Repair of Concrete (Depth Equal to or Less than 5 in.)	Sq Ft	50.0
Structural Repair of Concrete (Depth Greater than 5 in.)	Sq Ft	10.0



GONZALEZ COMPANIES, LLC
 7 CARPENTER DRIVE
 SALEM, IL 62881
 PHONE (618) 222-2221
 www.gonzalezcos.com
 ILLINOIS PROFESSIONAL DESIGN FIRM 184,004564

DESIGNED - JSP
 CHECKED - GLH
 DRAWN - KMA/JMW
 DATE - 02/09/2022

REVISED -
 REVISED -
 REVISED -
 REVISED -

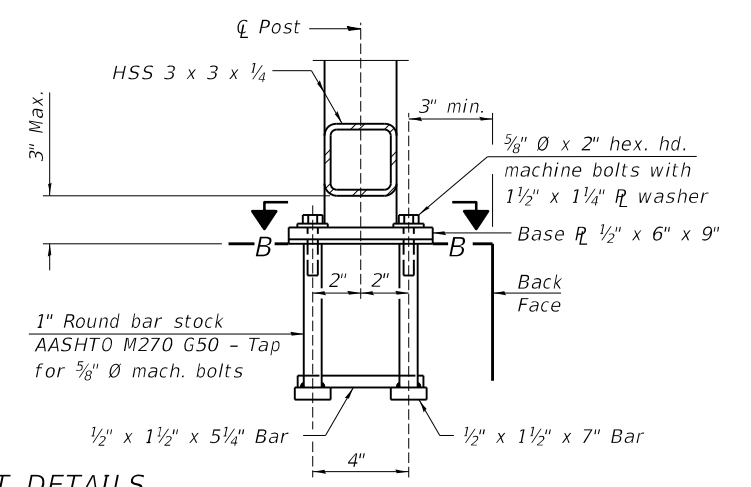
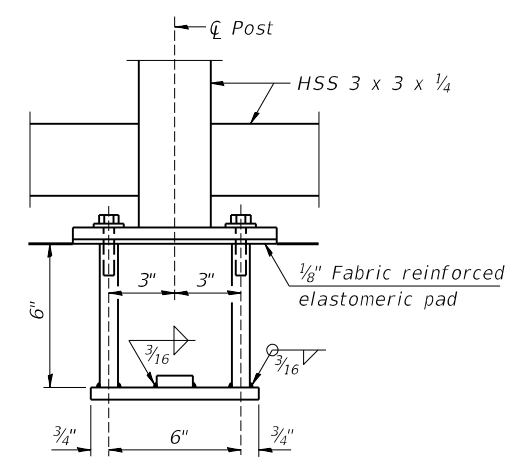
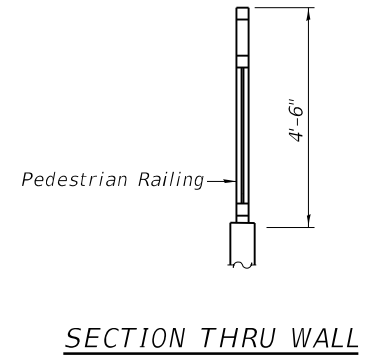
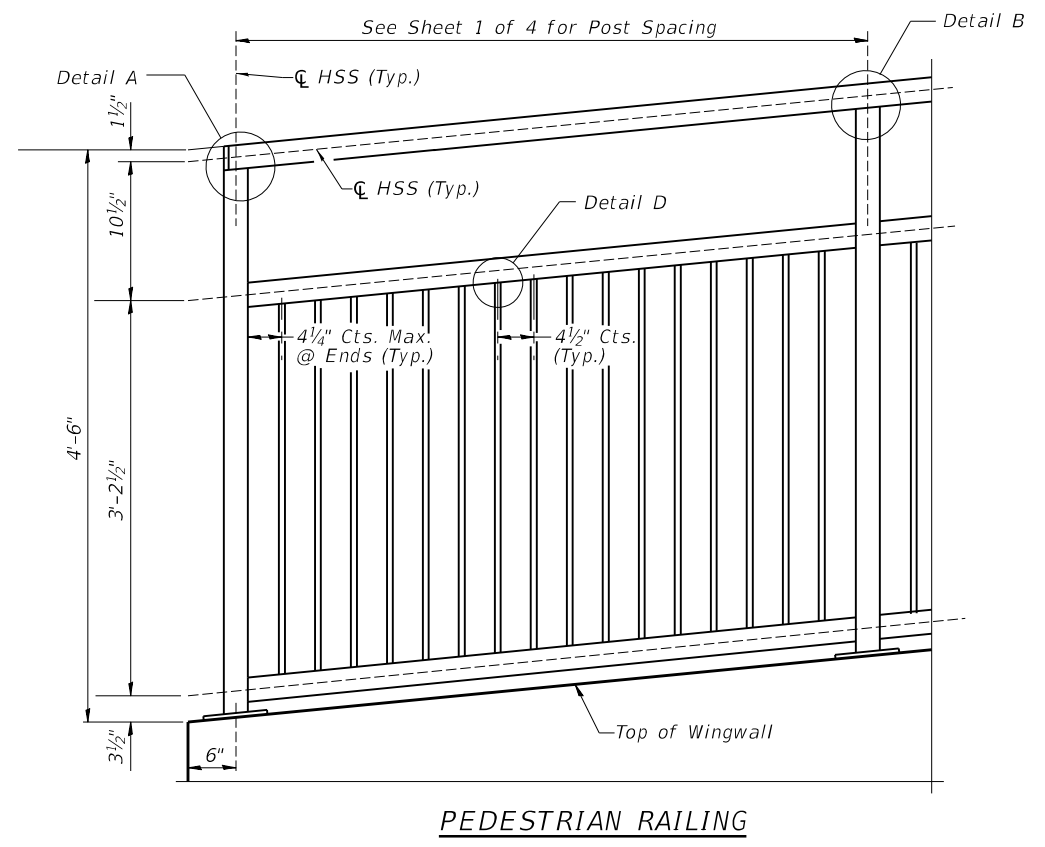
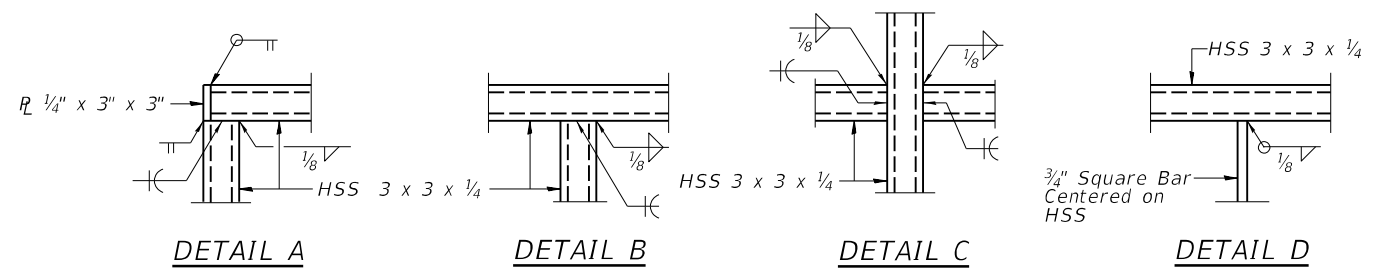
STATE OF ILLINOIS
 DEPARTMENT OF TRANSPORTATION

WINGWALL DETAILS

BRIDGE SHEET 2 OF 4

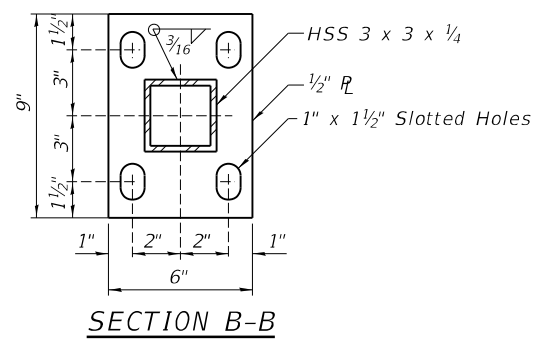
F.A.U. RTE.	SECTION	COUNTY	TOTAL SHEETS	SHEET NO.
2690	2021-13-I	COOK	13	9
ILLINOIS FED. AID PROJECT			CONTRACT NO. 62P53	

GCL Job No. 20-114-06



In lieu of the cast-in-place anchor device shown, the Contractor has the option of drilling and setting $\frac{5}{8}$ " \emptyset anchor rods according to Article 509.06 of the Standard Specifications. Embedment shall be according to the manufacturer's specifications for the full capacity of the anchor.

Notes:
 Place reinforcement bars to miss anchor rod locations.
 CVN testing is not required for the HSS tubing used in the Bicycle Railing.
 All steel rail elements shall be galvanized according to Article 509.05 of the Standard Specifications.
 All picket / post Elements Shall be Vertical and Plumb when erected.



BILL OF MATERIAL

Item	Unit	Quantity
Pedestrian Railing	Foot	47



SOIL BORING LOG

Log of Boring
GC-01
Sheet 1 of 2

ROUTE:	FAU2688 (Wolf Road)	DESCRIPTION:	Wolf Road over Addison Creek
SECTION:		DRILLER:	Rubino Engineering, Inc.
COUNTY:	Cook	DRILLED BY:	Joe Kenny
STRUCT. NO.:	016-2423	DRILL RIG TYPE:	Geoprobe 7822DT
STATION & OFFSET:		DRILLING METHOD:	3-1/4" hollow stem auger
SURFACE ELEV.:	645.5 ft	SAMPLING METHOD:	Auto Hammer (140 lb)
VERTICAL DATUM:	NAVD83	HAMMER TYPE:	Auto Hammer (140 lb)
LAT/LONG:	41.910181, -87.903129	HAMMER EFFICIENCY:	88.8 %
LOCATION:	Over Addison Creek	REMARKS:	Gonzalez Project No. 20-114-06

Depth (ft)	Graphic	Material Description	Elevation (ft): 645.5	Sample Number	Recovery, in. (%)	Sampling Resist. Or Core RQC (%)	Rimac, Qu (tsf)	Pocket Pen. Qu (tsf)	Moisture Content (%)	Dry Unit Weight (pcf)	Liquid Limit	Plasticity Index	Depth (ft)	Remarks
0.5		TOPSOIL	645.0											
1		CLAY: stiff, brown, dry, low plastic, with brick, few sand, few gravel (FILL)	644	SS-1	18 (75)	3-7-7-7 N = 14		2.0 P	19				1	
2			644	SS-2	19 (79)	6-4-5-5 N = 9		>4.5 P	16				2	
3			642										3	
4			642										4	
4.8		CLAY: stiff, dry, dark brown, low plastic, trace sand, trace gravel (GLACIAL TILL)	640.7	SS-3	13 (54)	4-4-4-7 N = 8		>4.5 P	15				5	
5			640										6	
6			640	SS-4A	16 (67)	3-4-5-6 N = 9	4.3 S	4.2 P	20				7	
7			638.5	SS-4B				3.2 P	22				8	
8		CLAY: medium stiff, moist, gray to brown, high plastic, little sand; iron oxide staining (A-7-6) (GLACIAL TILL)	638	SS-5	18 (75)	3-3-4-4 N = 7	2.5 S	2.5 P	22		55	31	9	
9			636					2.0 P					10	
10			636					2.8 P					11	
11			634	SS-6	18 (75)	2-2-3-3 N = 5	1.6 B	1.8 P	22				12	
12			634					2.5 P					13	
13			632	SS-7A	20 (83)	2-5-6-7 N = 11	5.0 B	4.2 P	20				14	
14			632	SS-7B				2.5 P					15	
15			630.6	SS-8A	18 (75)	4-4-3-3 N = 7	2.5 B	1.2 P	16				16	
16		SILTY LOAM: medium stiff, wet, gray, low plastic, few fine sand (GLACIAL TILL)	630	SS-8B				1.0 P					17	
17			629.2	SS-9A				0.8 P	21				18	
18		SAND: loose, wet, black, fine to coarse (GLACIAL TILL)	628.4	SS-9B	20 (83)	1-3-3-3 N = 6		0.5 P					19	
19		CLAY: medium stiff, moist, gray, low plastic, few fine to coarse sand, few gravel (GLACIAL TILL)	628	SS-9C				1.8 P	20				20	
20			627.4											
21			627.4	SS-10A	17 (71)	0-1-2-3 N = 3							21	
22			626.5	SS-10B				1.1 B	1.0 P	22			22	
23			626.5											



SOIL BORING LOG

Log of Boring
GC-01
Sheet 2 of 2

ROUTE:	FAU2688 (Wolf Road)	DESCRIPTION:	Wolf Road over Addison Creek
SECTION:		DRILLER:	Rubino Engineering, Inc.
COUNTY:	Cook	DRILLED BY:	Joe Kenny
STRUCT. NO.:	016-2423	DRILL RIG TYPE:	Geoprobe 7822DT
STATION & OFFSET:		DRILLING METHOD:	3-1/4" hollow stem auger
SURFACE ELEV.:	645.5 ft	SAMPLING METHOD:	Auto Hammer (140 lb)
VERTICAL DATUM:	NAVD83	HAMMER TYPE:	Auto Hammer (140 lb)
LAT/LONG:	41.910181, -87.903129	HAMMER EFFICIENCY:	88.8 %
LOCATION:	Over Addison Creek	REMARKS:	Gonzalez Project No. 20-114-06

Depth (ft)	Graphic	Material Description	Elevation (ft): 645.5	Sample Number	Recovery, in. (%)	Sampling Resist. Or Core RQC (%)	Rimac, Qu (tsf)	Pocket Pen. Qu (tsf)	Moisture Content (%)	Dry Unit Weight (pcf)	Liquid Limit	Plasticity Index	Depth (ft)	Remarks
21		CLAY: medium stiff, moist, dark gray, low plastic, few fine to coarse sand, few gravel (A-6) (GLACIAL TILL)	624	SS-11	24 (100)	1-2-3-4 N = 5	3.1 B	1.2 P	21				21	
22			624	SS-12A	24 (100)	0-3-6-9 N = 9	1.1 B	1.0 P					22	
23		CLAY: stiff, dry, dark gray, low plastic, few fine to coarse sand, trace gravel; some fine sand lenses (GLACIAL TILL)	622.7	SS-12B				2.5 P					23	
24			622					4.2 P					24	
25			620	SS-13	18 (75)	6-6-6-6 N = 12	1.8 B	>4.5 P					25	
26			620					>4.5 P					26	
27			618	SS-14A	23 (96)	3-8-5-5 N = 13	3.1 B	>4.5 P					27	
28			618	SS-14B				2.2 P					28	
29			616	SS-14C				2.2 P					29	
30		SANDY LOAM: dense, dry, gray, fine sand (GLACIAL TILL)	616	SS-15A	24 (100)	5-8-12-15 N = 20	7.8 B	2.5 P					30	
31			616	SS-15B				>4.5 P					31	
32		SILTY LOAM: hard, dry, gray, low plastic, some fine sand (GLACIAL TILL)	614	SS-16	19 (79)	2-5-17-22 N = 22		2.5 P					32	
33			614					>4.5 P					33	
34		SANDY LOAM: very dense, moist, gray, fine sand, trace gravel (GLACIAL TILL)	612	SS-17	24 (100)	12-17-13-20 N = 30	3.8 S	>4.5 P					34	
35			612					>4.5 P					35	
36			609.5	SS-18	20 (83)	20-24-48-26 N = 72		>4.5 P					36	
37		SILT: very stiff, dry to moist, gray, low plastic, trace sand (GLACIAL TILL)	608	SS-19	24 (100)	8-10-10-9 N = 20	1.8 B	>4.5 P					37	
38			608					3.2 P					38	
39			606	SS-20	19 (79)	3-5-1-1 N = 9	2.0 B	1.0 P					39	
40			605.5					0.8 P					40	
40		Boring terminated at 40.0'	605.5					1.0 P					40	



GONZALEZ COMPANIES, LLC
7 CARPENTER DRIVE
SALEM, IL 62881
PHONE (618) 222-2221
www.gonzalezcos.com
ILLINOIS PROFESSIONAL DESIGN FIRM 184,004564

DESIGNED - JSP
CHECKED - GLH
DRAWN - KMA/JMW
DATE - 02/09/2022

REVISED -
REVISED -
REVISED -
REVISED -

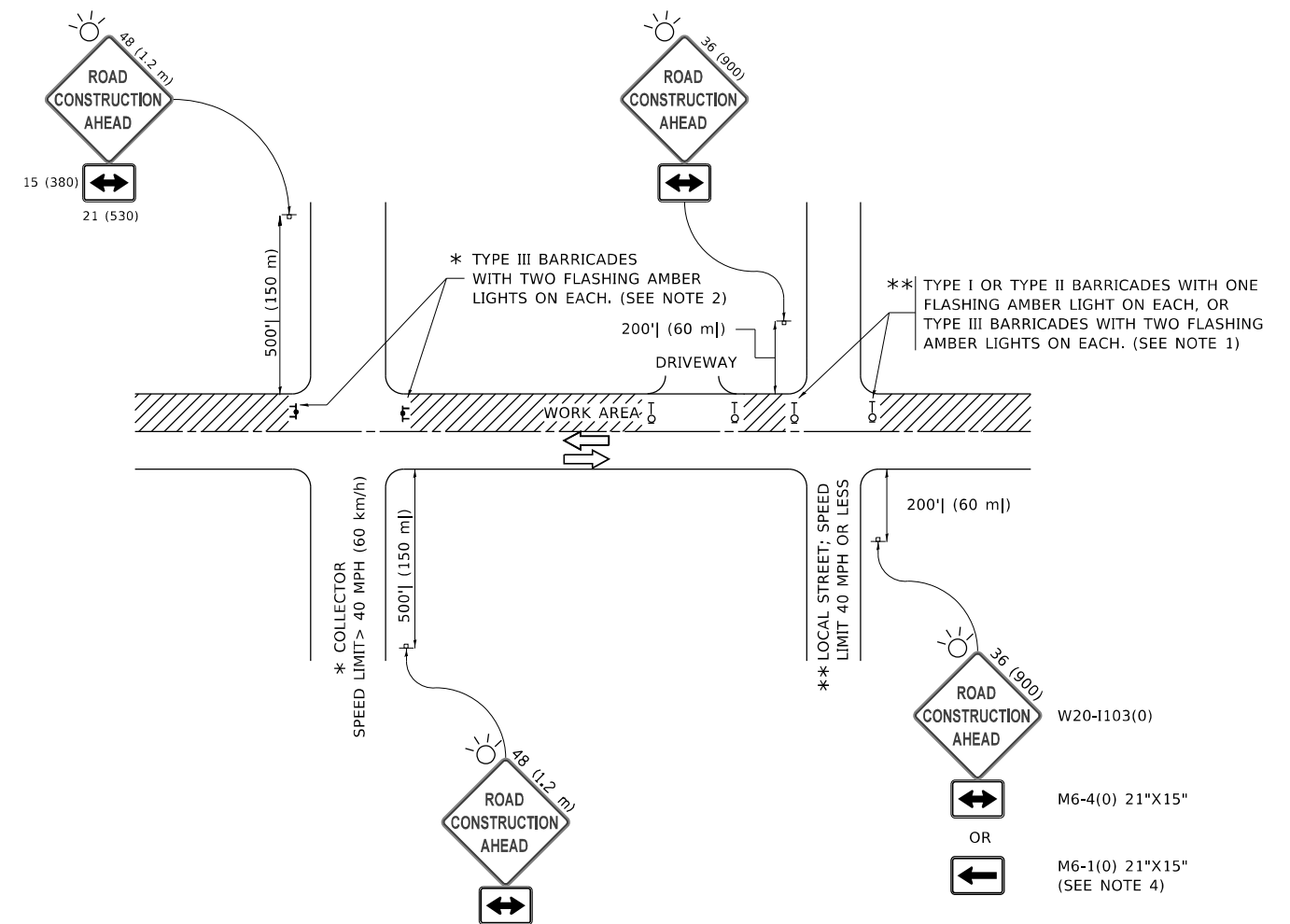
STATE OF ILLINOIS
DEPARTMENT OF TRANSPORTATION

SOIL BORINGS

BRIDGE SHEET 4 OF 4

F.A.U. RTE.	SECTION	COUNTY	TOTAL SHEETS	SHEET NO.
2690	2021-13-I	COOK	13	11
CONTRACT NO. 62P53				
ILLINOIS FED. AID PROJECT				

GCL Job No. 20-114-06



NOTES:

- SIDE ROAD WITH A SPEED LIMIT OF 40 MPH (60 km/h) OR LESS AS SHOWN ON THE DRAWING AND AS DIRECTED BY THE ENGINEER:
 - ONE "ROAD CONSTRUCTION AHEAD" SIGN 36 x 36 (900x900) WITH A FLASHER MOUNTED ON IT APPROXIMATELY 200' (60 m) IN ADVANCE OF THE MAIN ROUTE.
 - THE CLOSED PORTION OF THE MAIN ROUTE SHALL BE PROTECTED BY BLOCKING WITH TYPE I, TYPE II OR TYPE III BARRICADES, 1/3 OF THE CROSS SECTION OF THE CLOSED PORTION.
- SIDE ROAD WITH A SPEED LIMIT GREATER THAN 40 MPH (60 km/h) AS SHOWN ON THE DRAWING AND AS DIRECTED BY THE ENGINEER:
 - ONE "ROAD CONSTRUCTION AHEAD" SIGN 48 x 48 (1.2 m x 1.2 m) WITH A FLASHER MOUNTED ON IT APPROXIMATELY 500' (150 m) IN ADVANCE OF THE MAIN ROUTE.
 - THE CLOSED PORTION OF THE MAIN ROUTE SHALL BE PROTECTED BY BLOCKING WITH TYPE III BARRICADES, 1/2 OF THE CROSS SECTION OF THE CLOSED PORTION.
- CONES MAY BE SUBSTITUTED FOR BARRICADES OR DRUMS AT HALF THE SPACING DURING DAY OPERATIONS. CONES SHALL BE A MINIMUM OF 28 (710) IN HEIGHT.
- WHEN THE SIDE ROAD LIES BETWEEN THE BEGINNING OF THE MAINLINE SIGNING AND THE WORK ZONE, A SINGLE HEADED ARROW (M6-1) SHALL BE USED IN LIEU OF THE DOUBLE HEADED ARROW (M6-4).
- WHEN WORK IS BEING PERFORMED ON A SIDE ROAD OR DRIVEWAY, FOLLOW THE APPLICABLE STANDARD(S). THE DIRECTIONAL ARROW (M6-1 OR M6-4) SHALL BE COVERED OR REMOVED WHEN NO LONGER CONSISTENT WITH THE TRAFFIC CONTROL SET-UP.
- ADVANCE WARNING SIGNS ARE TO BE OMITTED ON DRIVEWAYS UNLESS OTHERWISE SPECIFIED IN THE PLANS OR BY THE ENGINEER.
- THE TRAFFIC CONTROL AND PROTECTION FOR SIDE ROADS, INTERSECTIONS, AND DRIVEWAYS SHALL BE INCLUDED IN THE COST OF SPECIFIED TRAFFIC CONTROL STANDARDS OR ITEMS.

All dimensions are in inches (millimeters) unless otherwise shown.

MODEL: D:\draft FILE NAME: p:\1108\BEBIDNTEG_ILlinis.gov\PWIDOT\Documents\DOT Offices\District 1\Projects\DH522\234\CADD\Draw\CAD\Sheet\TC10.dgn

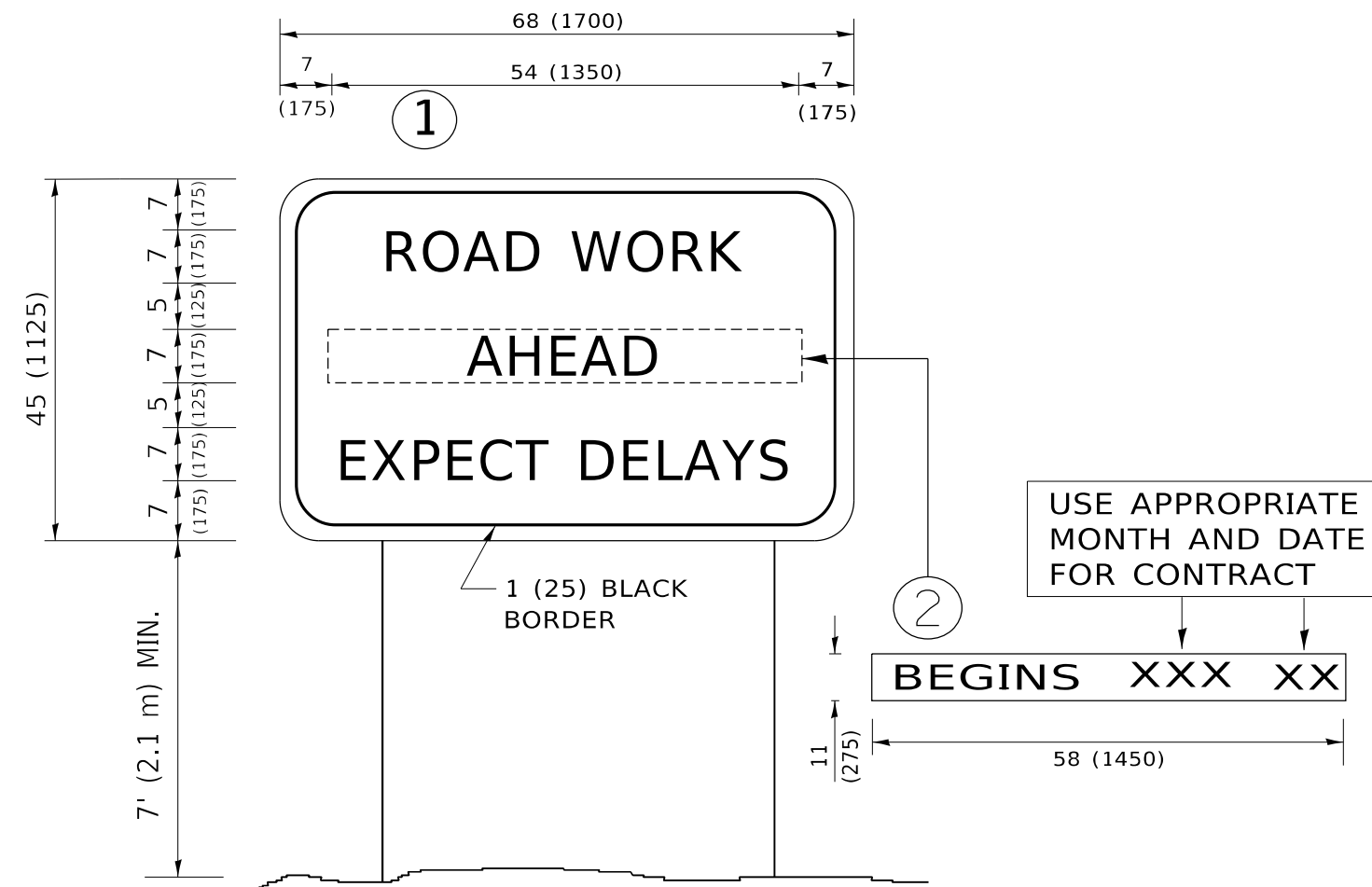
USER NAME = footemj	DESIGNED - L.H.A.	REVISED - A. HOUSEH 10-15-96
	DRAWN -	REVISED - T. RAMMACHER 01-06-00
PLOT SCALE = 50.0000 ' / in.	CHECKED -	REVISED - A. SCHUETZE 07-01-13
PLOT DATE = 3/4/2019	DATE - 06-89	REVISED - A. SCHUETZE 09-15-16

**STATE OF ILLINOIS
DEPARTMENT OF TRANSPORTATION**

**TRAFFIC CONTROL AND PROTECTION FOR
SIDE ROADS, INTERSECTIONS, AND DRIVEWAYS**

SCALE: NONE SHEET 1 OF 1 SHEETS STA. TO STA.

FAU. RTE.	SECTION	COUNTY	TOTAL SHEETS	SHEET NO.
2690	2021-131-I	COOK	13	12
TC-10			CONTRACT NO. 62P53	
ILLINOIS FED. AID PROJECT				



NOTES:

1. USE BLACK LETTERING ON ORANGE BACKGROUND.
2. ERECT SIGNS IN ADVANCE OF THE LOCATION FOR THE "ROAD CONSTRUCTION AHEAD" SIGN AT LOCATIONS AS DIRECTED BY THE ENGINEER.
3. ERECT SIGN ① WITH INSTALLED PANEL ② ONE WEEK PRIOR TO THE START OF CONSTRUCTION.
4. REMOVE PANEL ② SOON AFTER THE START OF CONSTRUCTION.
5. SEE SPECIAL PROVISION FOR "TEMPORARY INFORMATION SIGNING" FOR ADDITIONAL INFORMATION.
6. ONE SIGN ASSEMBLY EQUALS 25.70 SQ. FT. (2.3 SQ. M.)
7. SHALL BE PAID FOR AS TEMPORARY INFORMATION SIGNING.

ALL DIMENSIONS ARE IN INCHES (MILLIMETERS) UNLESS OTHERWISE SHOWN.

MODEL: D:\draft
 FILE NAME: p:\1108\BEBIDNTEG\Illinois.gov\RWIDOT\Documents\DOT_Offices\District_1\Projects\DH\5422\240\CAD\Draws\CAD\sheet\K22.dgn

USER NAME = footemj	DESIGNED -	REVISED - R. MIRS 09-15-97
	DRAWN -	REVISED - R. MIRS 12-11-97
PLOT SCALE = 50.0000 ' / in.	CHECKED -	REVISED - T. RAMMACHER 02-02-99
PLOT DATE = 3/4/2019	DATE -	REVISED - C. JUCIUS 01-31-07

**STATE OF ILLINOIS
DEPARTMENT OF TRANSPORTATION**

**ARTERIAL ROAD
INFORMATION SIGN**

SCALE: NONE SHEET 1 OF 1 SHEETS STA. TO STA.

FAU. RTE.	SECTION	COUNTY	TOTAL SHEETS	SHEET NO.
2690	2021-131-H	COOK	13	13
TC-22			CONTRACT NO. 62P53	
ILLINOIS FED. AID PROJECT				