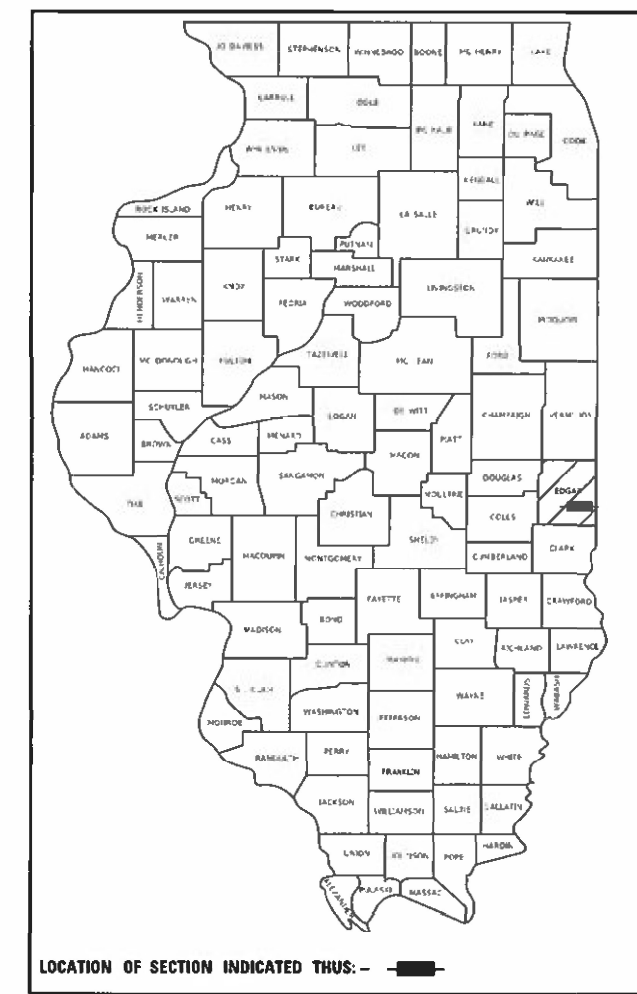


STATE OF ILLINOIS
DEPARTMENT OF TRANSPORTATION

F.A. RTE.	SECTION	COUNTY	TOTAL SHEETS	SHEET NO.
***	PARIS IMP 2022-1	EDGAR	20	1
		ILLINOIS	CONTRACT NO. 70F44	

*** PARIS FACILITY

D-95-044-21

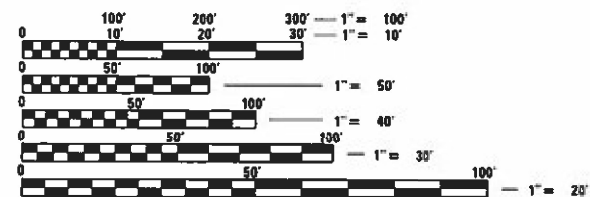


FOR INDEX OF SHEETS, SEE SHEET NO. 2
FOR SUMMARY OF QUANTITIES, SEE SHEET NO. 3

PROPOSED HIGHWAY PLANS

ROUTE PARIS FACILITY
SECTION PARIS IMP 2022-1
PATCHING & PARKING IMPROVEMENT
EDGAR COUNTY

PARIS HEADQUARTERS COMPLEX- EAST PARKING LOT
C-95-054-21

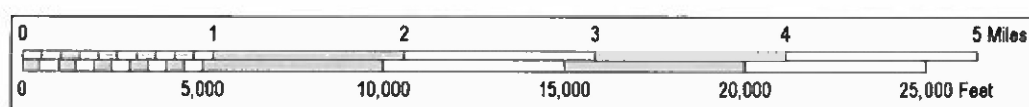
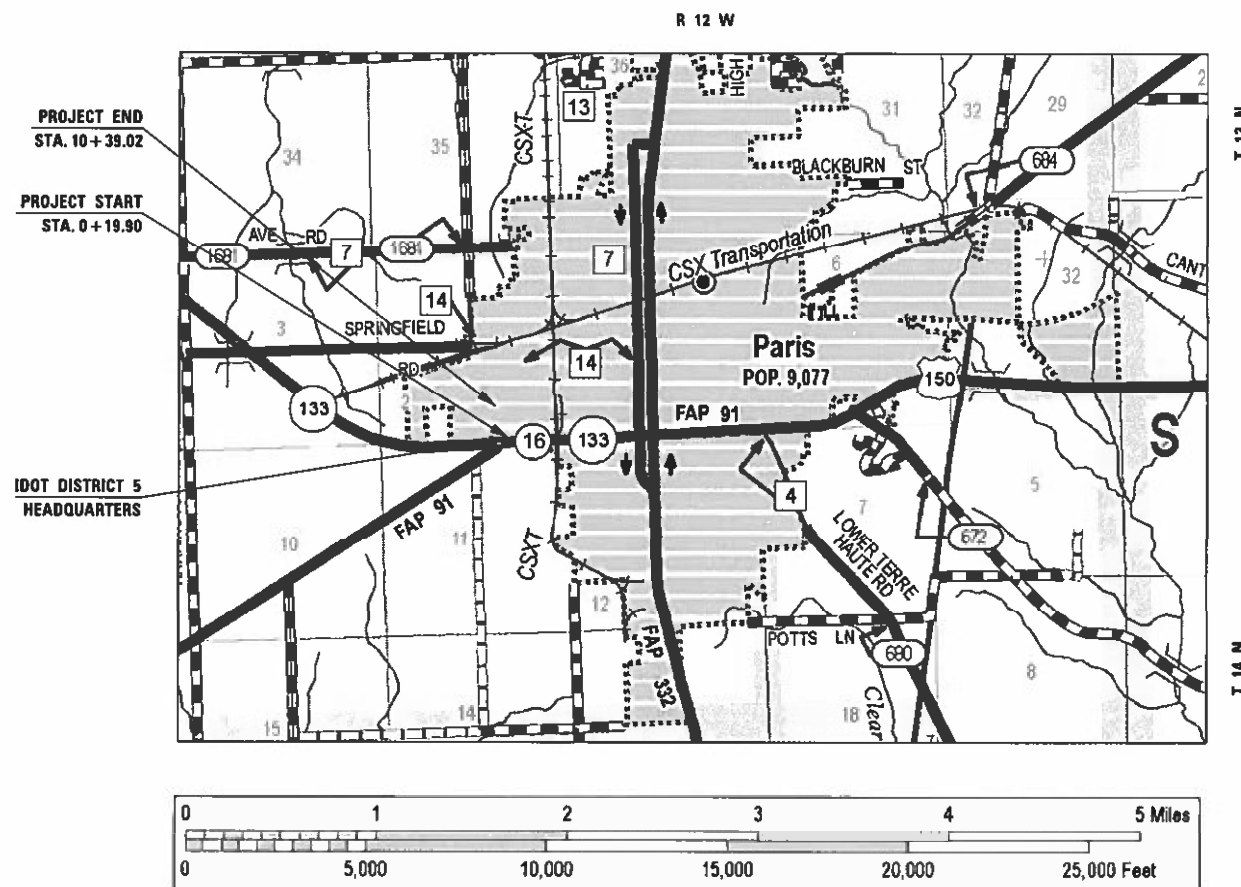


FULL SIZE PLANS HAVE BEEN PREPARED USING STANDARD ENGINEERING SCALES. REDUCED SIZED PLANS WILL NOT CONFORM TO STANDARD SCALES. IN MAKING MEASUREMENTS ON REDUCED PLANS, THE ABOVE SCALES MAY BE USED.

J.U.L.I.E.
JOINT UTILITY LOCATION INFORMATION FOR EXCAVATORS
1-800-892-0123
OR 811
PARIS TOWNSHIP

PROJECT ENGINEER: RYAN CARROLL
PROJECT MANAGER: SAMUEL MEGLI
DESIGNER: CHRISTINA GOSNELL
PHONE NUMBER: (217)465-4181

CONTRACT NO. 70F44



GROSS LENGTH = 1,019.12 FT. = 0.193 MILE
NET LENGTH = 1,019.12 FT. = 0.193 MILE

STATE OF ILLINOIS
DEPARTMENT OF TRANSPORTATION

SUBMITTED 2/4 20 22
Kenil A. Donnett *aw*
REGIONAL ENGINEER

March 25, 2022
[Signature]
ENGINEER OF DESIGN AND ENVIRONMENT

March 2, 2022
[Signature]
DIRECTOR OF HIGHWAYS PROJECT IMPLEMENTATION

PRINTED BY THE AUTHORITY
OF THE STATE OF ILLINOIS

INDEX OF SHEETS

SHEET NO.	DESCRIPTION
1	COVER SHEET
2	INDEX OF SHEETS
2	LIST OF HIGHWAY STANDARDS
2	GENERAL NOTES
3-4	SUMMARY OF QUANTITIES
5	EXISTING AND PROPOSED TYPICAL CROSS SECTIONS
6-7	SCHEDULE OF QUANTITIES
8-11	PLAN SHEET
12-16	PAVEMENT MARKING PLAN SHEETS
17-19	ADA RAMP DETAIL
20	D5 DISTRICT DETAIL 7200100

LIST OF HIGHWAY STANDARDS

STANDARD NO.	NAME OF STANDARD
000001-08	STANDARD SYMBOLS, ABBREVIATIONS AND PATTERNS
001006	DECIMAL OF AN INCH AND A FOOT
424001-11	PERPENDICULAR CURB RAMPS FOR SIDEWALKS
424026-03	ENTRANCE/ ALLEY PEDESTRIAN CROSSINGS
424031-02	MEDIAN PEDESTRIAN CROSSINGS
442201-03	CLASS C AND D PATCHES
604001-05	FRAME AND GRATE, TYPE 3
606001-08	CONCRETE CURB TYPE B AND COMBINATION CURB AND GUTTER
701006-05	OFF-ROAD OPERATIONS, 2L, 2W, 15' (4.5M) TO 24" (600MM) FROM PAVEMENT EDGE
701301-04	LANE CLOSURES, 2L, 2W, SHORT TIME OPERATIONS
701901-08	TRAFFIC CONTROL DEVICES
780001-05	TYPICAL PAVEMENT MARKINGS
886001-01	DETECTOR LOOP INSTALLATIONS
886006-01	TYPICAL LAYOUT FOR DETECTION LOOPS

GENERAL NOTES

G.N.-100A
ELECTRONIC FILES AND/OR ELECTRONIC SURVEY INFORMATION INCLUDING CADD FILES WILL NOT BE AVAILABLE TO THE CONTRACTOR.

G.N.-105.09A
ALL ELEVATIONS SHOWN IN THE PLANS ARE BASED ON NORTH AMERICAN VERTICAL DATUM OF 1988. (NAVD 88)

G.N.-406H

Location	D5 Parking Lot
Mixture Use	Surface
AC/PG	PG 64-22
Design Air Voids	4.0% @ Ndes=50
Mix Comp(Gradation)	IL 9.5
Friction Aggregate	Mix C
Mixture Weight	112
Quality Management Program	QC/QA
Sublot Size	N.A.
Material Transfer Device (Required ?)	No

G.N.-440B
THE EXISTING TIE BARS BETWEEN THE EXISTING PAVEMENT AND EXISTING MEDIANS, GUTTERS AND/OR COMBINATION CURB AND GUTTERS THAT ARE FOUND SUITABLE FOR REUSE SHALL BE CLEANED, STRAIGHTENED AND INCORPORATED INTO THE NEW CONSTRUCTION. ANY EXISTING TIE BARS THAT ARE FOUND UNSUITABLE TO BE INCORPORATED INTO THE PROPOSED CONSTRUCTION DUE TO EXCESSIVE RUSTING OR DISTRESS SHALL BE REMOVED FLUSH WITH THE FACE OF THE EXISTING CONCRETE AND DISPOSED OF OUTSIDE THE LIMITS OF THE RIGHT-OF-WAY IN ACCORDANCE WITH ARTICLE 202.03 OF THE STANDARD SPECIFICATIONS.

THIS WORK WILL NOT BE PAID FOR SEPARATELY BUT SHALL BE CONSIDERED INCLUDED IN THE VARIOUS REMOVAL PAY ITEMS AND NO ADDITIONAL COMPENSATION WILL BE ALLOWED.

COMMITMENTS

THERE ARE NO COMMITMENTS FOR THIS CONTRACT.

LIST OF DISTRICT DETAILS

DISTRICT DETAIL NUMBER	DESCRIPTION
72000100	DISABLE PARKING

MODEL: \\MODELNAME\$
FILE: \\NAME\$.prn; \\SERVER\Bentley.com\PROJECTS\2022\11\CD\DATA\CD\Drawings\2022\07\14\shf-CemNbrs.dgn

USER NAME = GosnellCL	DESIGNED -	REVISED -
	DRAWN -	REVISED -
PLOT SCALE = 40.0000' / in.	CHECKED -	REVISED -
PLOT DATE = 2/2/2022	DATE -	REVISED -

**STATE OF ILLINOIS
DEPARTMENT OF TRANSPORTATION**

**INDEX OF SHEETS, LIST OF HIGHWAY STANDARDS
AND GENERAL NOTES**

SCALE: SHEET 1 OF 1 SHEETS STA. TO STA.

F.A. RTE.	SECTION	COUNTY	TOTAL SHEETS	SHEET NO.
	PARIS IMP 2022-1	EDGAR	20	2
			CONTRACT NO. 70F44	
ILLINOIS FED. AID PROJECT				

REV. 2/15/22

SUMMARY OF QUANTITIES

LOCATION OF WORK: PARIS HEADQUARTERS COMPLEX
 EAST PARKING LOT

URBAN

COUNTY: EDGAR

FUNDING BREAKOUT: 100% STATE

CONSTRUCTION TYPE CODE: 0005

	CODE NO.	ITEM	UNIT	TOTAL QUANTITY
	40600290	BITUMINOUS MATERIAL (TACK COAT)	POUND	6,420.0
	40604150	HOT-MIX ASPHALT SURFACE COURSE, MIX "C", N50	TON	1,610.0
	42400200	PORTLAND CEMENT CONCRETE SIDEWALK 5 INCH	SQ FT	300.0
*	42400800	DETECTABLE WARNINGS	SQ FT	90.0
	44000157	HOT-MIX ASPHALT SURFACE REMOVAL, 2.0"	SQ YD	14,270.0
	44000500	COMBINATION CURB AND GUTTER REMOVAL	FOOT	14.0
	44000600	SIDEWALK REMOVAL	SQ FT	300.0
	44200050	WELDED WIRE REINFORCEMENT	SQ YD	750.0
	44201347	CLASS C PATCHES, TYPE IV, 9 INCH	SQ YD	750.0
	44213204	TIE BARS 3/4"	EACH	35.0
	56109210	WATER VALVES TO BE ADJUSTED	EACH	1.0
	60250600	CATCH BASINS TO BE ADJUSTED WITH NEW TYPE 3 FRAME AND GRATE	EACH	9.0
	60300350	MANHOLE FRAMES TO BE ADJUSTED	EACH	5.0
	60603800	COMBINATION CONCRETE CURB AND GUTTER, TYPE B-6.12	FOOT	14.0
* DENOTES SPECIALTY ITEM				

MODEL: \\MODELNAME\F
 FILE NAME: P:\USCWA\Bentley.com\PROJECTS\DOT_Offices\District_5\Projects\0570F44\CADD\Drawings\0570F44-01-000.dgn

USER NAME = meglisk	DESIGNED -	REVISED -
	DRAWN -	REVISED -
PLOT SCALE = 40:0 1" / in.	CHECKED -	REVISED -
PLOT DATE = 02/04/22	DATE -	REVISED -

**STATE OF ILLINOIS
 DEPARTMENT OF TRANSPORTATION**

SUMMARY OF QUANTITIES

SCALE: SHEET 1 OF 2 SHEETS STA. TO STA.

F.A. RTE.	SECTION	COUNTY	TOTAL SHEETS	SHEET NO.
	PARIS IMP 2022-1	EDGAR	20	3
			CONTRACT NO. 70F44	
ILLINOIS FED. AID PROJECT				

SUMMARY OF QUANTITIES

LOCATION OF WORK: PARIS HEADQUARTERS COMPLEX
 EAST PARKING LOT
 URBAN
 COUNTY: EDGAR
 FUNDING BREAKOUT: 100% STATE
 CONSTRUCTION TYPE CODE: 0005

	CODE NO.	ITEM	UNIT	TOTAL QUANTITY
	67100100	MOBILIZATION	LSUM	1.0
*	78001100	PAINT PAVEMENT MARKING - LETTERS AND SYMBOLS	SQ FT	70.0
*	78001110	PAINT PAVEMENT MARKING - LINE 4"	FOOT	4,490.0
*	88600100	DETECTOR LOOP, TYPE I	FOOT	52.0
	X7010216	TRAFFIC CONTROL AND PROTECTION, (SPECIAL)	LSUM	1.0
	Z0010900	COLD MILLING (SPECIAL)	FOOT	1,970.0
* DENOTES SPECIALTY ITEM				

MODEL NAME:
 FILE NAME:
 PROJECT:
 DISTRICT:
 SHEET:
 DATE:
 TIME:
 USER:
 SCALE:
 PLOT DATE:
 02/04/22

USER NAME = meglisk	DESIGNED -	REVISED -
	DRAWN -	REVISED -
PLOT SCALE = 40:0' : " / in.	CHECKED -	REVISED -
PLOT DATE = 02/04/22	DATE -	REVISED -

**STATE OF ILLINOIS
 DEPARTMENT OF TRANSPORTATION**

SUMMARY OF QUANTITIES		
SCALE:	SHEET 2 OF 2 SHEETS	STA. TO STA.

F.A. RTE.	SECTION	COUNTY	TOTAL SHEETS	SHEET NO.
	PARIS IMP 2022-1	EDGAR	20	4
			CONTRACT NO. 70F44	
ILLINOIS FED. AID PROJECT				

SCHEDULES OF QUANTITIES

SECTION	AREA	AREA	40600290	40604150	44000157	56109210	60250600	60300350	88600100	Z0010900
	SQ FT	SQ YD	BITUMINOUS MATERIAL (TACK COAT) POUND	POLYMERIZED HOT-MIX ASPHALT SURFACE COURSE, IL-9.5, MIX "C", N50 TON	HOT-MIX ASPHALT SURFACE REMOVAL, 2.0" SQ YD	WATER VALVES TO BE ADJUSTED EACH	CATCH BASINS TO BE ADJUSTED WITH NEW TYPE 3 FRAME AND GRATE EACH	MANHOLE FRAMES TO BE ADJUSTED EACH	DETECTOR LOOP, TYPE I FOOT	COLD MILLING (SPECIAL) FOOT
A	58,976.49	6,552.94	2,948.82	733.93	6,552.94	1.00	1.00	3.00	0.00	287.00
SECTION A SUBTOTALS =			2,948.82	733.93	6,552.94	1.00	1.00	3.00	0.00	287.00
SECTION A TOTALS =			2,950.00	740.00	6,560.00	1.00	1.00	3.00	0.00	290.00
B	17,511.65	1,945.74	875.58	217.92	1,945.74	0.00	2.00	0.00	52.00	651.00
SECTION B SUBTOTALS =			875.58	217.92	1,945.74	0.00	2.00	0.00	52.00	651.00
SECTION B TOTALS =			880.00	220.00	1,950.00	0.00	2.00	0.00	52.00	650.00
D	51,797.08	5,755.23	2,589.85	644.59	5,755.23	0.00	6.00	2.00	0.00	1,026.00
SECTION D SUBTOTALS =			2,589.85	644.59	5,755.23	0.00	6.00	2.00	0.00	1,026.00
SECTION D TOTALS =			2,590.00	650.00	5,760.00	0.00	6.00	2.00	0.00	1,030.00
PROJECT TOTALS =			6,420.00	1,610.00	14,270.00	1.00	9.00	5.00	52.00	1,970.00

PAVEMENT MARKING SCHEDULE

SECTION	LOCATION	78001110	78001110	78001100
		PAINT PAVEMENT MARKING - LINE 4" WHITE FOOT	PAINT PAVEMENT MARKING - LINE 4" YELLOW FOOT	PAINT PAVEMENT MARKING - LETTERS AND SYMBOLS WHITE SQ FT
A	PARKING LOT EAST OF HQ	2,250.10	311.60	30.7
	PARKING LOT SOUTH OF CMS	180.00	155.80	10.2
SUBTOTALS =		2,430.10	467.40	41.00
SECTION A TOTALS =		2,900.00		50.00
D	PARKING LOT EAST OF MATERIALS	646.40	155.80	10.2
	PARKING LOT SOUTH OF SIGN SHOP	389.60	155.80	10.2
	PARKING EAST OF SIGN SHOP	170.00	0.00	0.0
	PARKING WEST OF SIGN SHOP	70.00	0.00	0.0
SUBTOTALS =		1,276.00	311.60	20.50
SECTION D TOTALS =		1,590.00		20.00
PROJECT TOTALS =		4,490.00		70.0

MODEL: 1409010.MXIF
 FILE: 1409010.MXIF
 C:\Users\jba\OneDrive\Documents\1DOT\Office\Drawings\Project\10570744\10570744.dwg
 S:\Project\10570744\CADD\Drawings\CADD\Drawings\10570744.dwg

USER NAME = GosnellC	DESIGNED -	REVISED -
	DRAWN -	REVISED -
PLOT SCALE = 40:0 '*' / in.	CHECKED -	REVISED -
PLOT DATE = 2/22/2022	DATE -	REVISED -

**STATE OF ILLINOIS
DEPARTMENT OF TRANSPORTATION**

SCHEDULE OF QUANTITIES

SCALE: SHEET 1 OF 2 SHEETS STA. TO STA.

F.A. RTE.	SECTION	COUNTY	TOTAL SHEETS	SHEET NO.
	PARIS IMP 2022-1	EDGAR	20	6
		CONTRACT NO. 70F44		
		ILLINOIS FED. AID PROJECT		

SCHEDULES OF QUANTITIES

ADA RAMP SCHEDULE

SECTION	LOCATION			42400200	44000600	42400800	60603800	44000500
				PORTLAND CEMENT CONCRETE SIDEWALK 5 INCH SQ FT	SIDEWALK REMOVAL SQ FT	DETECTABLE WARNINGS SQ FT	COMBINATION CONCRETE CURB AND GUTTER, TYPE B-6.12 FOOT	COMBINATION CURB AND GUTTER REMOVAL FOOT
A	1- EAST OF HQ BY DOOR 9			57.8	57.8	14.0	14.0	14.0
	2- SOUTH OF MPB BY DOOR 15			28.4	28.4	12.0	0.0	0.0
	3- EAST PARKING LOT ISLAND (EAST)			51.3	51.3	10.0	0.0	0.0
	4- EAST PARKING LOT ISLAND (WEST)			58.6	58.6	10.0	0.0	0.0
	5- SOUTH OF CMS GARAGE BY DOOR 16			60.0	60.0	8.0	0.0	0.0
			SUBTOTALS =	256.0	256.0	54.0	14.0	14.0
			SECTION A TOTALS =	260.0	260.0	60.0	14.0	14.0
D	6- SOUTH OF SIGN SHOP			34.5	34.5	23.0	0.0	0.0
			SUBTOTALS =	34.5	34.5	23.0	0.0	0.0
			SECTION D TOTALS =	40.0	40.0	30.0	0.0	0.0
			PROJECT TOTALS =	300.0	300.0	90.0	14.0	14.0

PCC PATCHING SCHEDULE

SECTION	STATION	OFFSET	LENGTH	WIDTH	44201347	44213204	44200050
					CLASS C PATCHES, TYPE IV, 9 INCH SQ YD	TIE BARS 3/4" EACH	WELDED WIRE REINFORCEMENT SQ YD
D	7+16.94	-281.40	21.60	62.50	150.00	7.00	150
	7+57.19	-259.04	21.60	62.50	150.00	7.00	150
	7+57.19	-237.54	21.60	62.50	150.00	7.00	150
	7+57.19	-215.85	21.60	62.50	150.00	7.00	150
	7+57.19	-194.25	21.60	62.50	150.00	7.00	150
				SECTION D TOTALS =	750.00	35.00	750.00
				PROJECT TOTALS =	750.00	35.00	750.00

MODEL: \\MODEL\MAME FILE: \\MAILS_P\public\paw_bentley.com\FW\DOT\Documents\DOT_offices\Dir\dr_5\Project\0570E44\CADD\Drawn\CAD\Sheets\0570E44_sqs\Schedule.dgn

USER NAME = Gosnell	DESIGNED -	REVISED -
	DRAWN -	REVISED -
PLOT SCALE = 40:0' = 1" / lin.	CHECKED -	REVISED -
PLOT DATE = 2/2/2022	DATE -	REVISED -

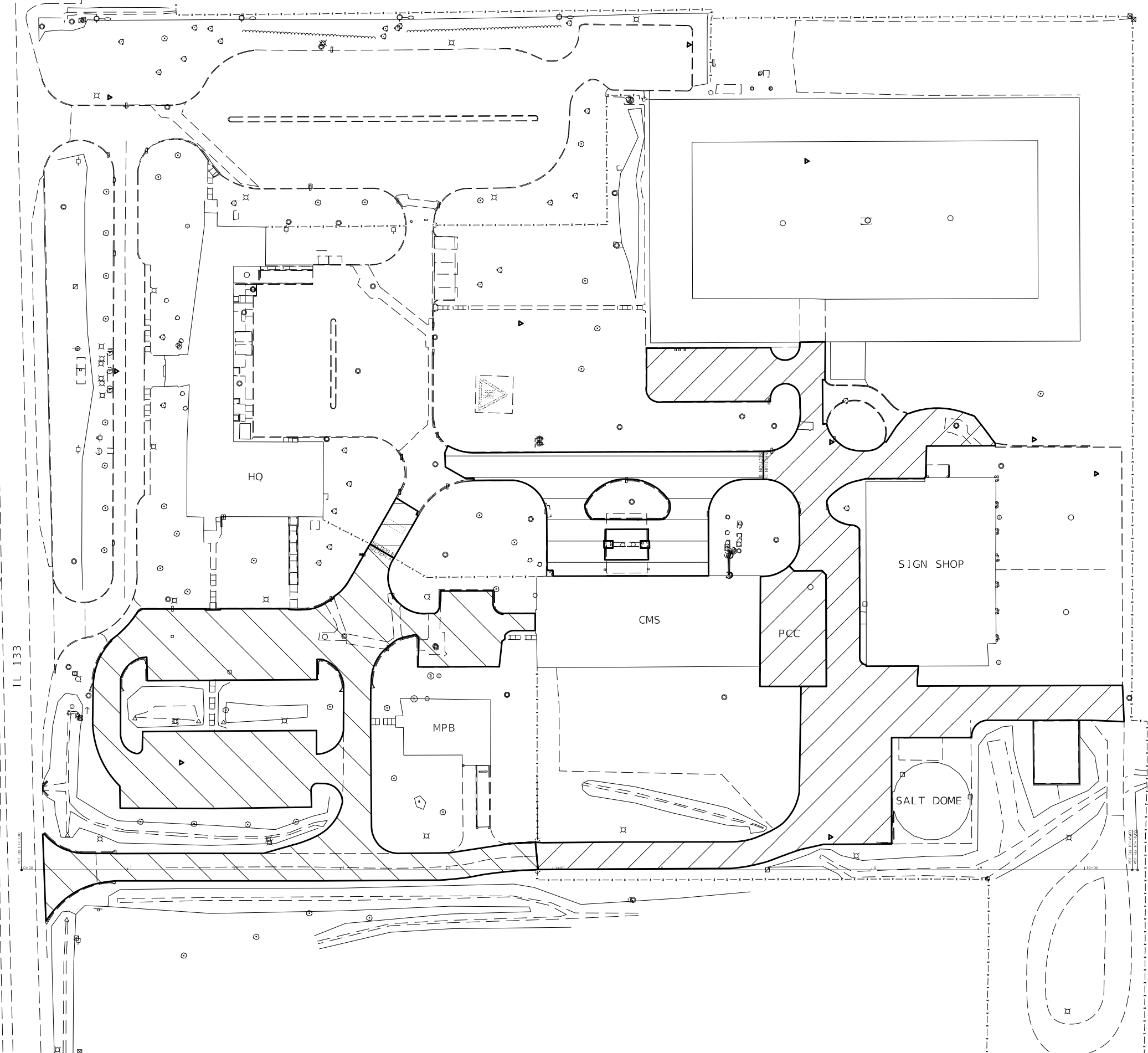
**STATE OF ILLINOIS
DEPARTMENT OF TRANSPORTATION**

SCHEDULE OF QUANTITIES ADA RAMP SCHEDULE			
SCALE:	SHEET 2	OF 2 SHEETS	STA. TO STA.

F.A. RTE.	SECTION	COUNTY	TOTAL SHEETS	SHEET NO.
	PARIS IMP 2022-1	EDGAR	20	7
			CONTRACT NO. 70F44	
		ILLINOIS FED. AID PROJECT		



- SECTION A
- SECTION B
- SECTION C
- LIMITS OF RESURFACING



MODEL: \\MODEL\MAME
 FILE: NAME: \\PUB\c:\paw\bea\paw.com\PIV\DOT\Documents\DOT Office\Dir\Dir: S:\Project\10570544\CADD\Drawn\CAD\Sheet\10570544_sht1.PLAN.dwg

USER NAME = Gosnell	DESIGNED -	REVISED -
	DRAWN -	REVISED -
PLOT SCALE = 100,0000' / in.	CHECKED -	REVISED -
PLOT DATE = 2/2/2022	DATE -	REVISED -

**STATE OF ILLINOIS
DEPARTMENT OF TRANSPORTATION**

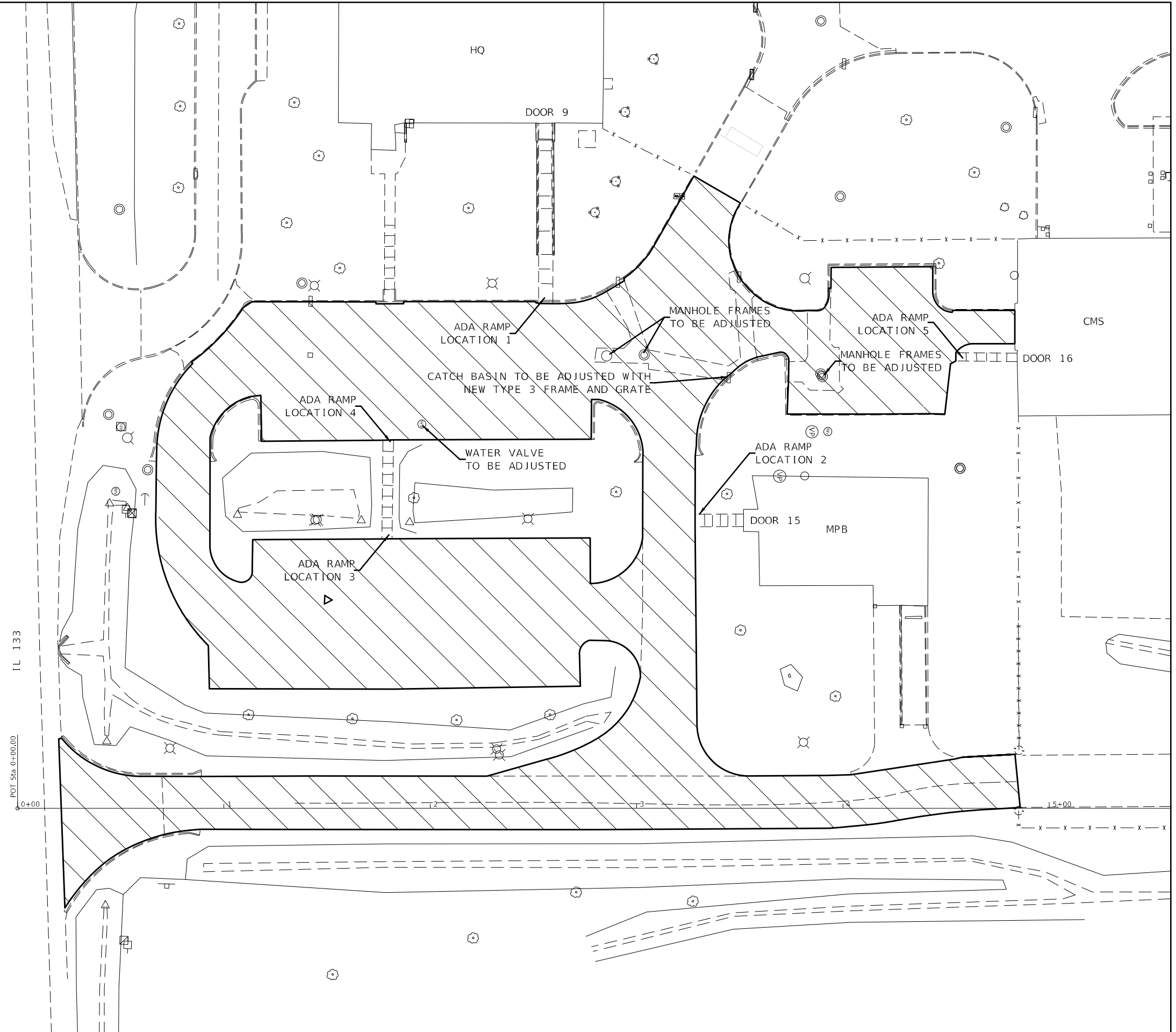
PLAN SHEET

SCALE: SHEET 1 OF 4 SHEETS STA. TO STA.

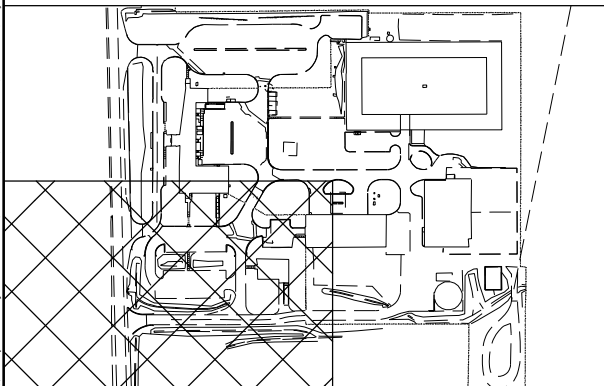
F.A. RTE.	SECTION	COUNTY	TOTAL SHEETS	SHEET NO.
	PARIS IMP 2022-1	EDGAR	20	8
CONTRACT NO. 70F44				
ILLINOIS FED. AID PROJECT				



- SECTION A
- SECTION B
- SECTION C
- LIMITS OF RESURFACING



PLAN SHEET LOCATION:



MODEL: \\MODEL\NAME
 FILE: NAME.dwg
 PROJECT: \\PROJECT\570744\CADD\Drawn\CAD\Sheet\570744.dwg
 PROJECT: \\PROJECT\570744\CADD\Drawn\CAD\Sheet\570744.dwg

USER NAME = Gosnell	DESIGNED -	REVISED -
PLOT SCALE = 100,0000' / in.	DRAWN -	REVISED -
PLOT DATE = 2/2/2022	CHECKED -	REVISED -
	DATE -	REVISED -

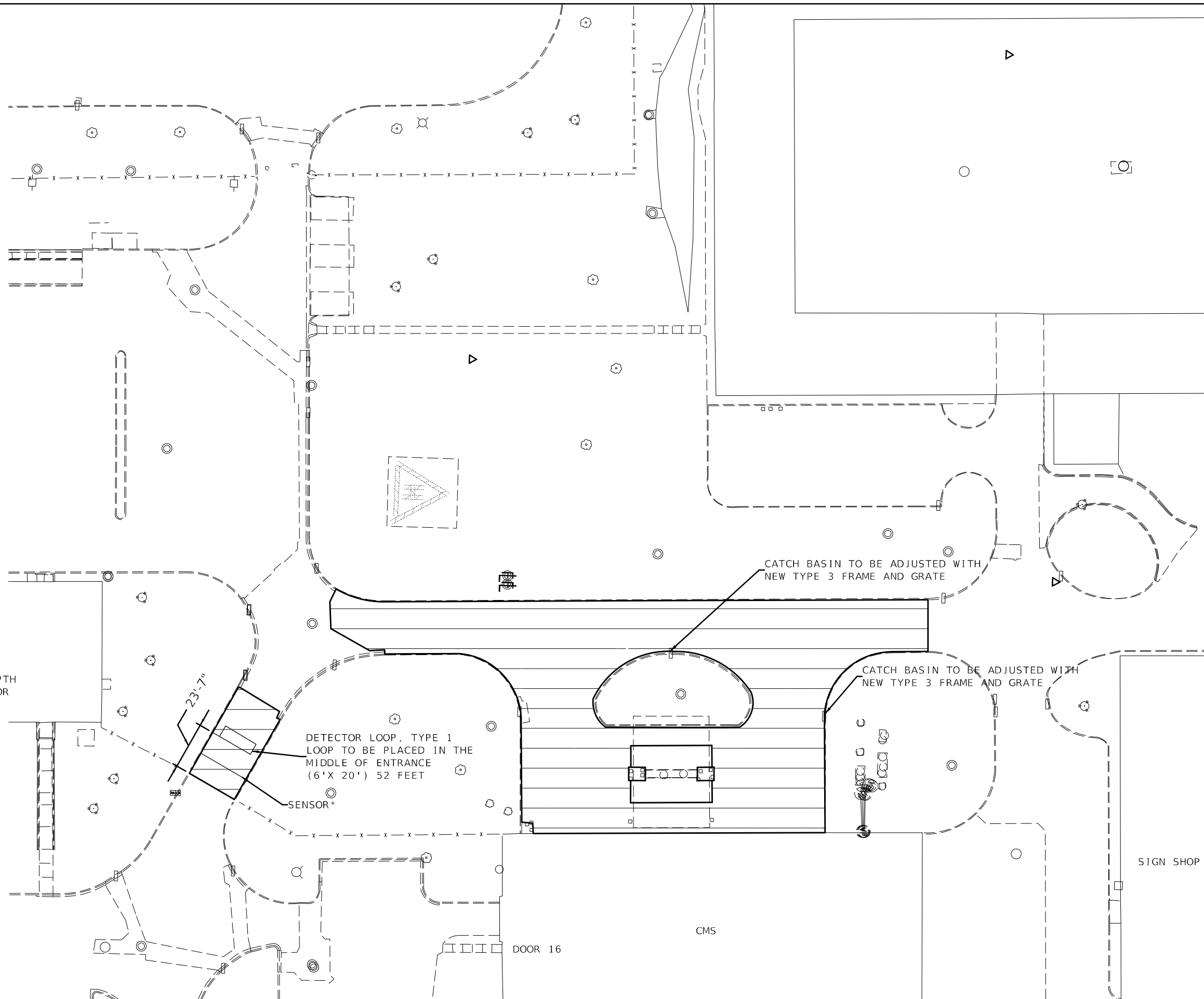
**STATE OF ILLINOIS
DEPARTMENT OF TRANSPORTATION**

PLAN SHEET SECTION A	
SCALE:	SHEET 2 OF 4 SHEETS STA. TO STA.

F.A. RTE.	SECTION	COUNTY	TOTAL SHEETS	SHEET NO.
	PARIS IMP 2022-1	EDGAR	20	9
CONTRACT NO. 70F44				
ILLINOIS FED. AID PROJECT				

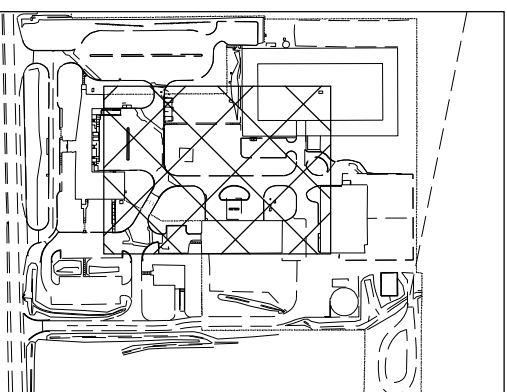


- SECTION A
- SECTION B
- SECTION C
- LIMITS OF RESURFACING



*FIELD ENGINEER NEEDS TO VERIFY LOCATION AND DEPTH OF SENSOR. LOCATION IS APPROX. 12' SE OF DETECTOR LOOP. DEPTH OF SENSOR IS UNKNOWN. SENSOR MAY INTERFERE WITH MILL/INLAY.

PLAN SHEET LOCATION:



MODEL: \\MODEL\MAME
 FILE: NAME: \\PUB\c:\paw\benefy.com\PIV\DOT\Documents\DOT_Offices\Dir\ref: S:\Project\0570844\CADD\Drawn\CAD\Sheet\0570844-01-PLAN.dwg

USER NAME = Gosnell	DESIGNED -	REVISED -
PLOT SCALE = 100,0000' / in.	DRAWN -	REVISED -
PLOT DATE = 2/2/2022	CHECKED -	REVISED -
	DATE -	REVISED -

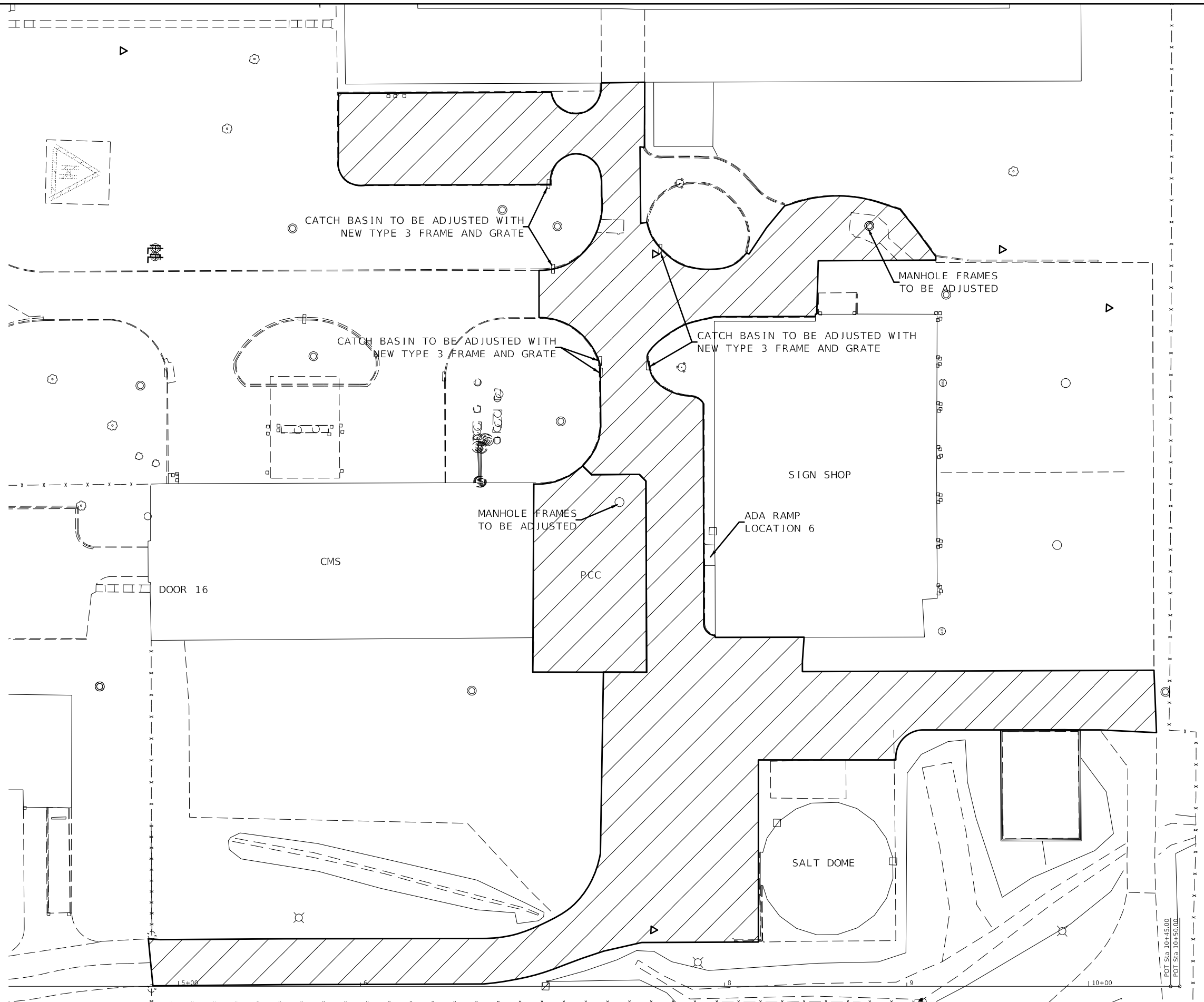
**STATE OF ILLINOIS
DEPARTMENT OF TRANSPORTATION**

PLAN SHEET SECTION B	
SCALE:	SHEET 3 OF 4 SHEETS STA. TO STA.

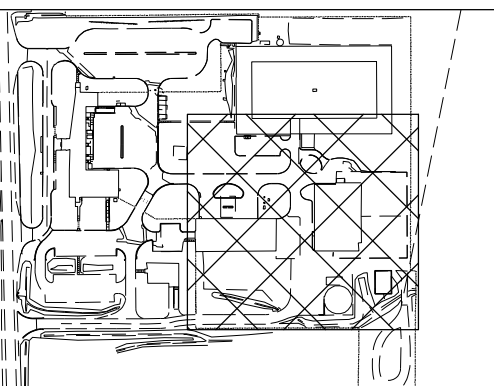
F.A. RTE.	SECTION	COUNTY	TOTAL SHEETS	SHEET NO.
	PARIS IMP 2022-1	EDGAR	20	10
CONTRACT NO. 70F44				
ILLINOIS FED. AID PROJECT				



- SECTION A
- SECTION B
- SECTION C
- LIMITS OF RESURFACING



PLAN SHEET LOCATION:



MODEL: \\MODEL\MAME
 FILE: NAME: p:\u003cuser\paw\beefy.com\PIV\DOT\Documents\DOT Office\Dir\Dir: S\Project\0570744\CADD\Drawn\CAD\Sheet\0570744_sht_Plan.dwg

USER NAME = Gosnell	DESIGNED -	REVISED -
PLOT SCALE = 100,0000' / in.	DRAWN -	REVISED -
PLOT DATE = 2/2/2022	CHECKED -	REVISED -
	DATE -	REVISED -

**STATE OF ILLINOIS
DEPARTMENT OF TRANSPORTATION**

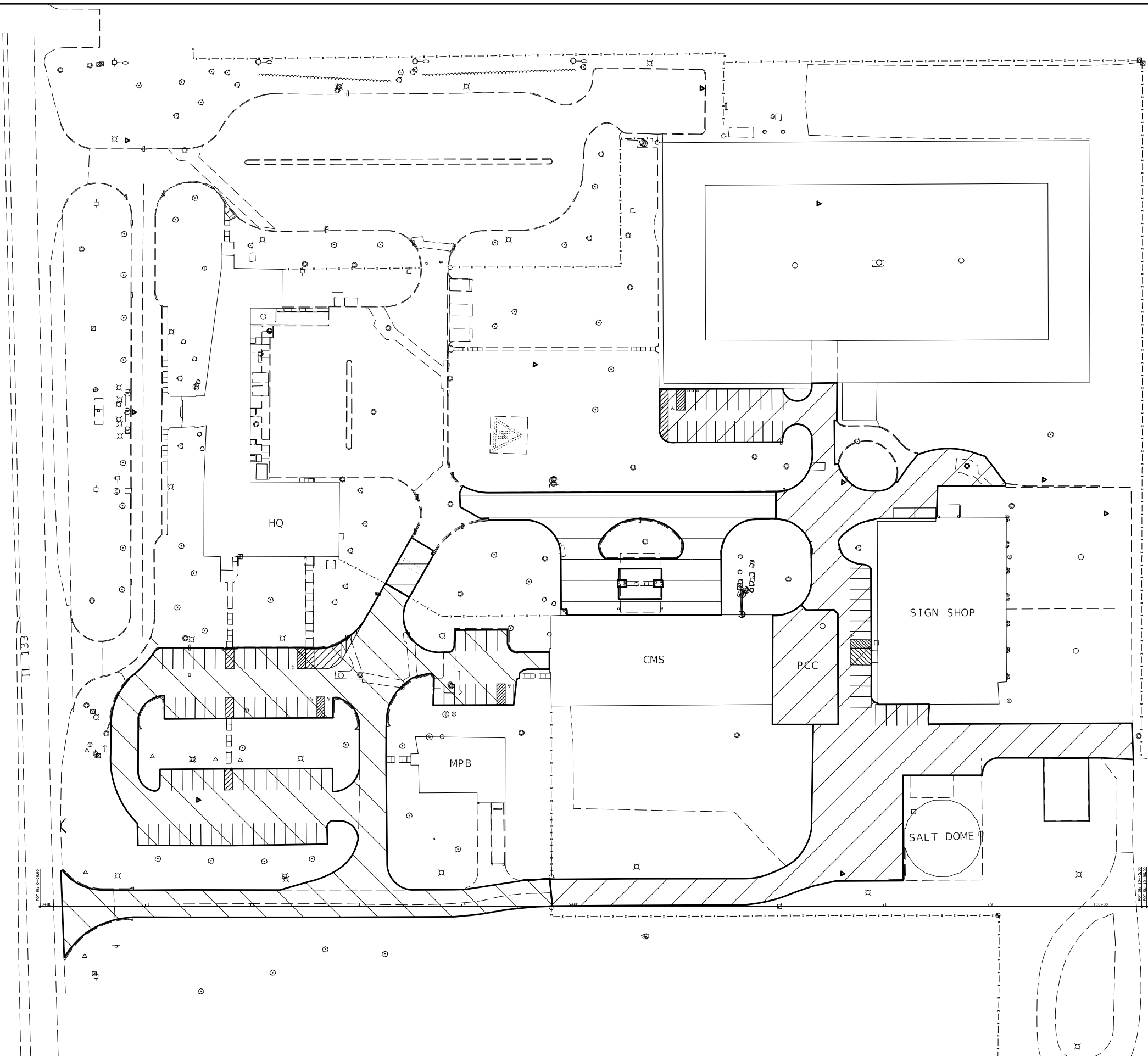
PLAN SHEET SECTION C			
SCALE:	SHEET 4	OF 4	SHEETS
	STA.		TO STA.

F.A. RTE.	SECTION	COUNTY	TOTAL SHEETS	SHEET NO.
	PARIS IMP 2022-1	EDGAR	20	11
			CONTRACT NO. 70F44	
ILLINOIS FED. AID PROJECT				

POT Sta. 10+45.00
 POT Sta. 10+50.00



- SECTION A
- SECTION B
- SECTION C
- LIMITS OF RESURFACING



MODEL: \\MODEL\MNMF
 FILE: \\MAIL: public\paw_bentley.com\PIV\DOT\Documents\DOT Office\Dir\dr: S:\Project\10570844\CADD\Drawn\CAD\Sheet\10570844_sht_PMK.dgn

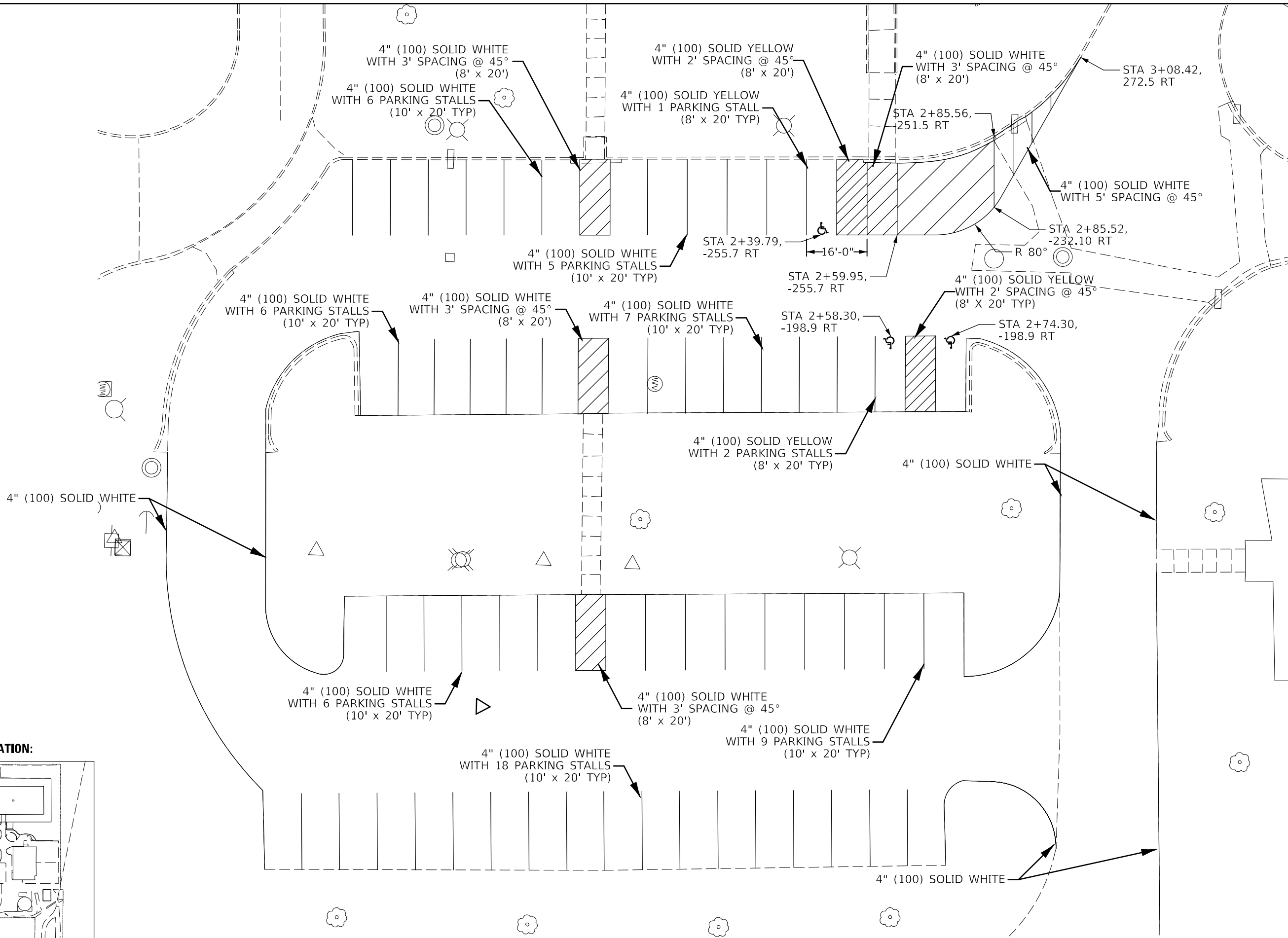
USER NAME = Gosnell	DESIGNED -	REVISED -
PLOT SCALE = 100:0' = 1" / in.	DRAWN -	REVISED -
PLOT DATE = 2/2/2022	CHECKED -	REVISED -
	DATE -	REVISED -

**STATE OF ILLINOIS
DEPARTMENT OF TRANSPORTATION**

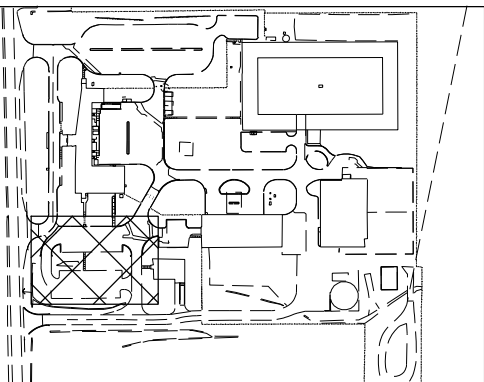
**PAVEMENT MARKING
PLAN SHEET**

SCALE: SHEET 1 OF 5 SHEETS STA. TO STA.

F.A. RTE.	SECTION	COUNTY	TOTAL SHEETS	SHEET NO.
	PARIS IMP 2022-1	EDGAR	20	12
			CONTRACT NO. 70F44	
ILLINOIS FED. AID PROJECT				



PLAN SHEET LOCATION:



MODEL: I:\MODELS\MHFE
 FILE: MHFE_Plan\I:\MODELS\MHFE\DWG\I:\MODELS\MHFE\CADD\DATA\CADD\sheet10570744.dwg:PKM.dgn

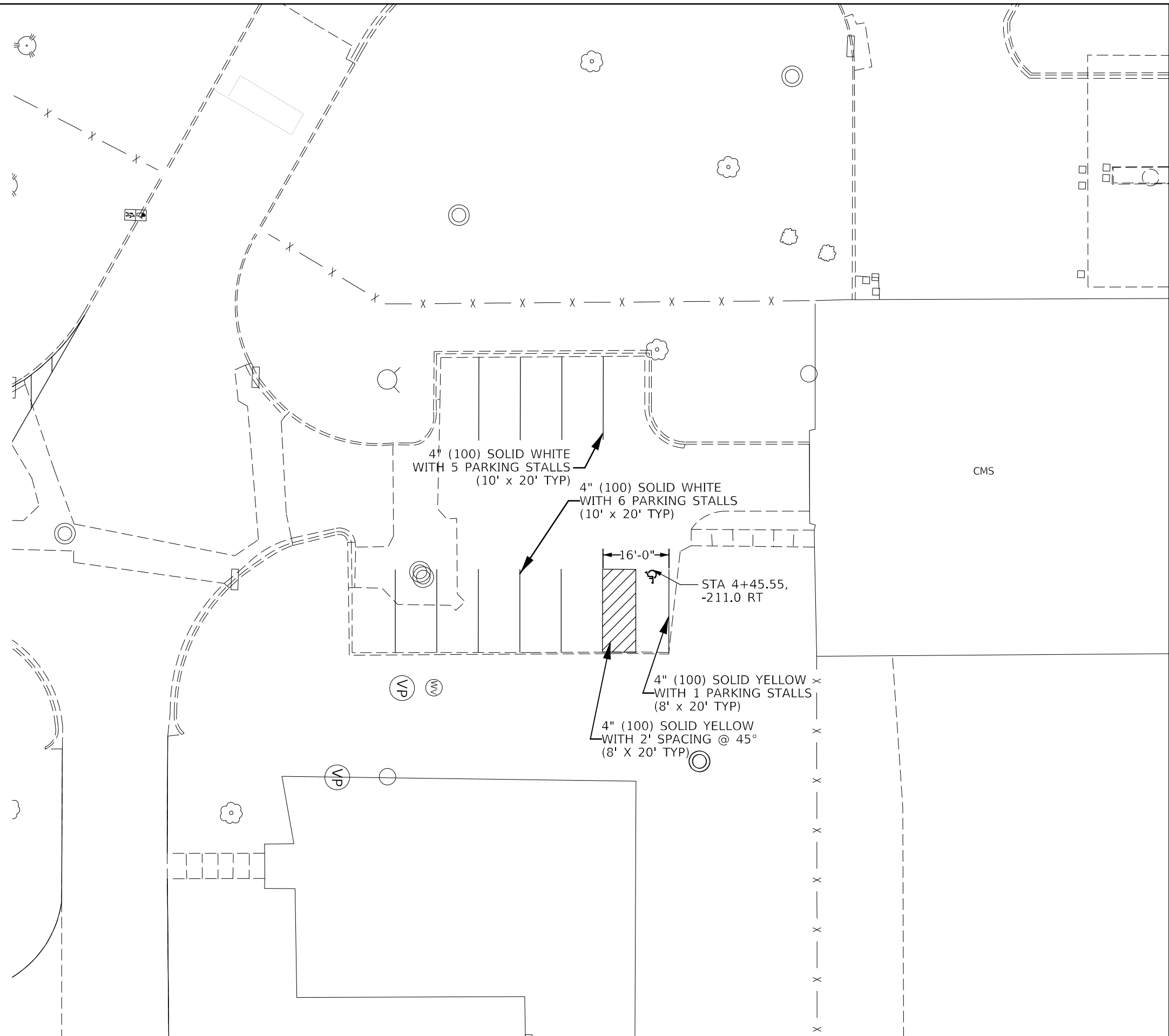
USER NAME = Gosnell	DESIGNED -	REVISED -
PLOT SCALE = 100:0' = 1" / in.	DRAWN -	REVISED -
PLOT DATE = 2/2/2022	CHECKED -	REVISED -
	DATE -	REVISED -

**STATE OF ILLINOIS
DEPARTMENT OF TRANSPORTATION**

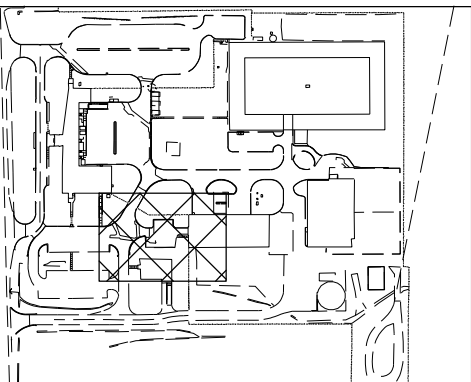
**PAVEMENT MARKING PLAN SHEET
SECTION A - EAST PARKING LOT**

SCALE: SHEET 2 OF 5 SHEETS STA. TO STA.

F.A. RTE.	SECTION	COUNTY	TOTAL SHEETS	SHEET NO.
	PARIS IMP 2022-1	EDGAR	20	13
CONTRACT NO. 70F44				
ILLINOIS FED. AID PROJECT				



PLAN SHEET LOCATION:



MODEL: I:\MODEL\MAME
 FILE: NAME: p:\u\c\paw\be\paw.com\p\w\dot\Documents\DOT\Office\Dir\drf: S:\Project\0570F44\CADD\Drawn\CAD\Sheet\0570F44_south_PMK.dgn

USER NAME = Gosnell	DESIGNED -	REVISED -
PLOT SCALE = 100:0' = 1" / in.	DRAWN -	REVISED -
PLOT DATE = 2/2/2022	CHECKED -	REVISED -
	DATE -	REVISED -

**STATE OF ILLINOIS
DEPARTMENT OF TRANSPORTATION**

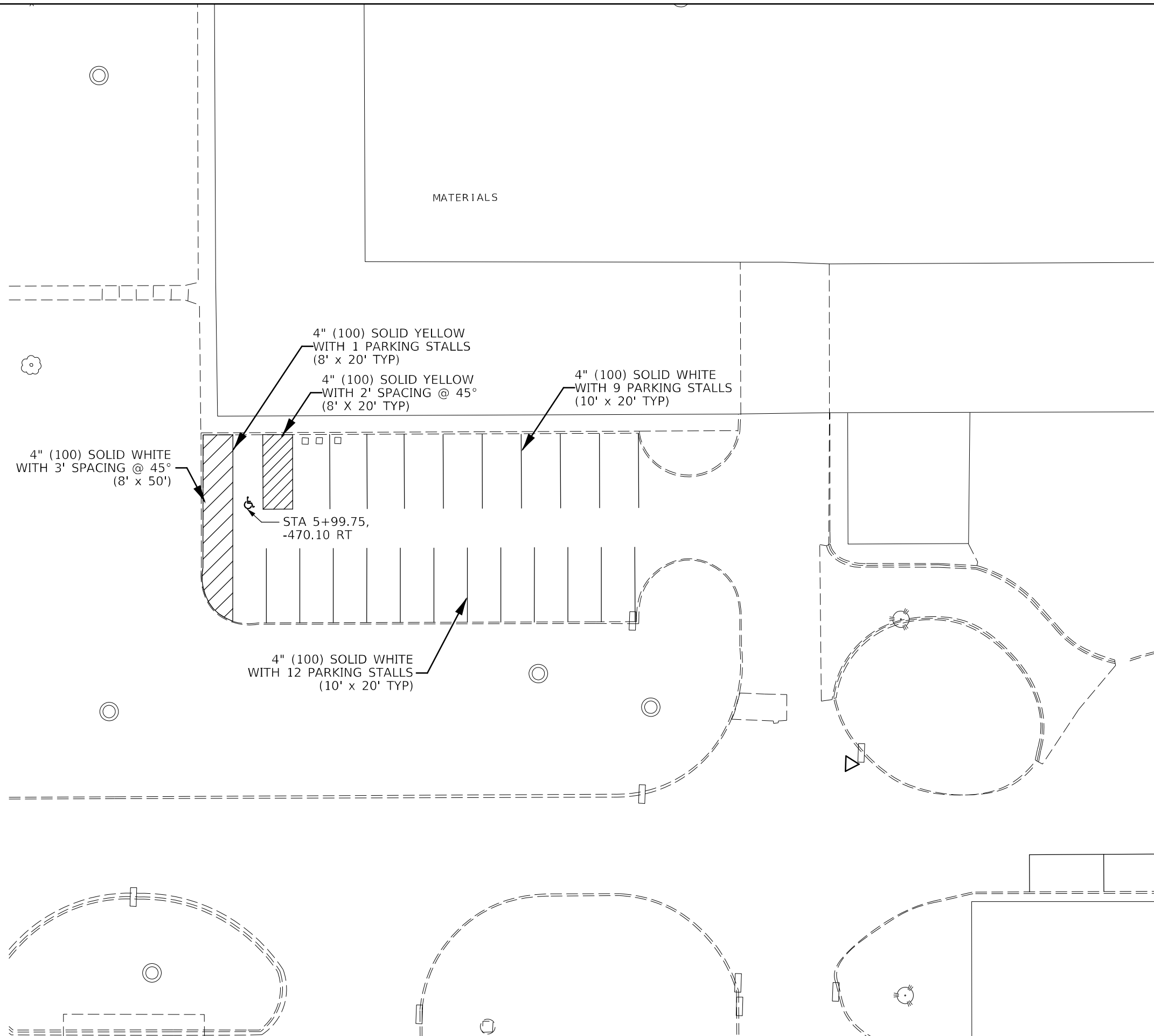
**PAVEMENT MARKING PLAN SHEET
SECTION A - SOUTH OF CMS**

SCALE: SHEET 3 OF 5 SHEETS STA. TO STA.

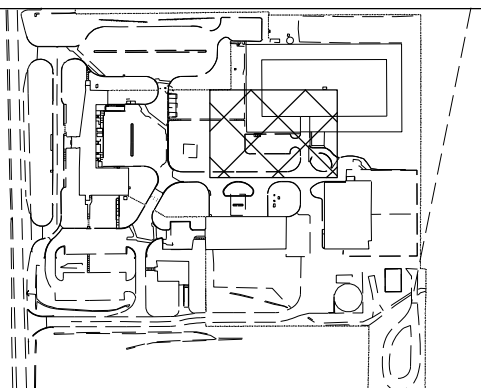
F.A. RTE.	SECTION	COUNTY	TOTAL SHEETS	SHEET NO.
	PARIS IMP 2022-1	EDGAR	20	14
CONTRACT NO. 70F44				
ILLINOIS FED. AID PROJECT				



- SECTION A
- SECTION B
- SECTION C
- LIMITS OF RESURFACING



PLAN SHEET LOCATION:



MODEL: \\MODEL\MAME
 FILE: \\MAILS_P\public\paw_bec@fy.com\FW\DOT\Documents\DOT_Offices\Dir\dr: S\Project\0570744\CADD\Drawn\CAD\Sheets\0570744_ehb_PMK.dgn

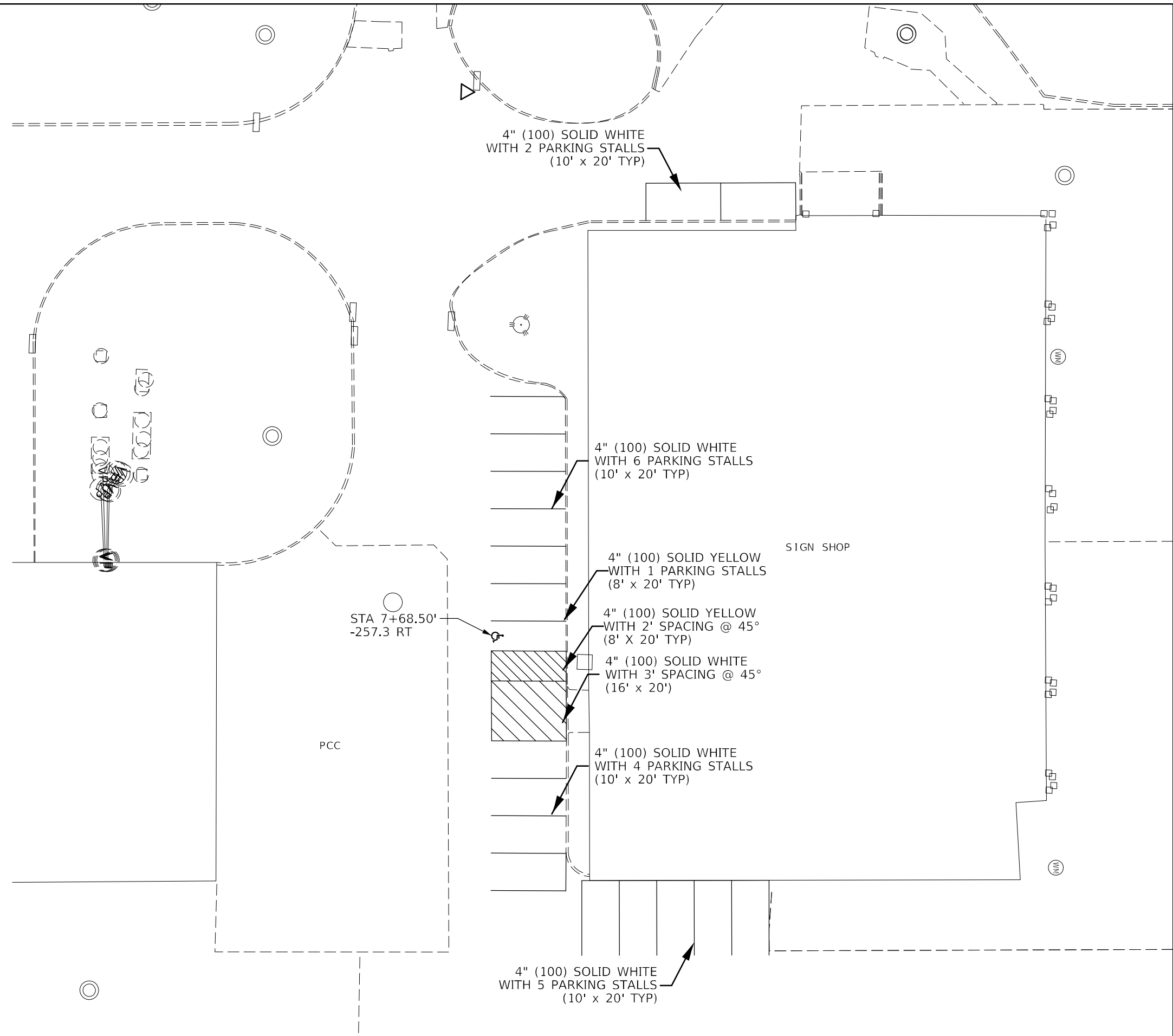
USER NAME = Gosnell	DESIGNED -	REVISED -
PLOT SCALE = 100:0' = 1" / in.	DRAWN -	REVISED -
PLOT DATE = 2/2/2022	CHECKED -	REVISED -
	DATE -	REVISED -

**STATE OF ILLINOIS
DEPARTMENT OF TRANSPORTATION**

**PAVEMENT MARKING PLAN SHEET
SECTION D - EAST OF MATERIALS**

SCALE: SHEET 4 OF 5 SHEETS STA. TO STA.

F.A. RTE.	SECTION	COUNTY	TOTAL SHEETS	SHEET NO.
	PARIS IMP 2022-1	EDGAR	20	15
CONTRACT NO. 70F44				
ILLINOIS FED. AID PROJECT				

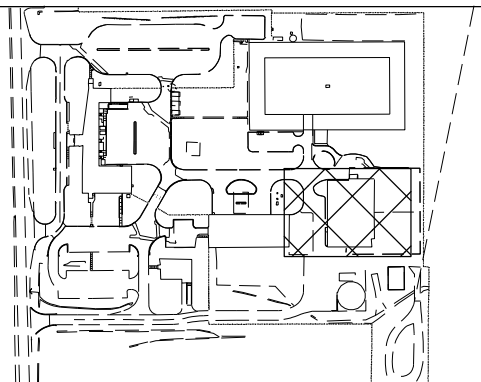


STA 7+68.50
-257.3 RT

PCC

SIGN SHOP

PLAN SHEET LOCATION:



MODEL: \\MODEL\MAME
 FILE: \\MAILS_Plan\110122\paw_bee\paw.com\PIV\DOT\Documents\DOT_Offices\Dir\drf: S:\Project\1057044\CAD\Drawn\CAD\Sheets\1057044_sht_PMK.dgn

USER NAME = Gosnell	DESIGNED -	REVISED -
PLOT SCALE = 100:0' = 1" / in.	DRAWN -	REVISED -
PLOT DATE = 2/2/2022	CHECKED -	REVISED -
	DATE -	REVISED -

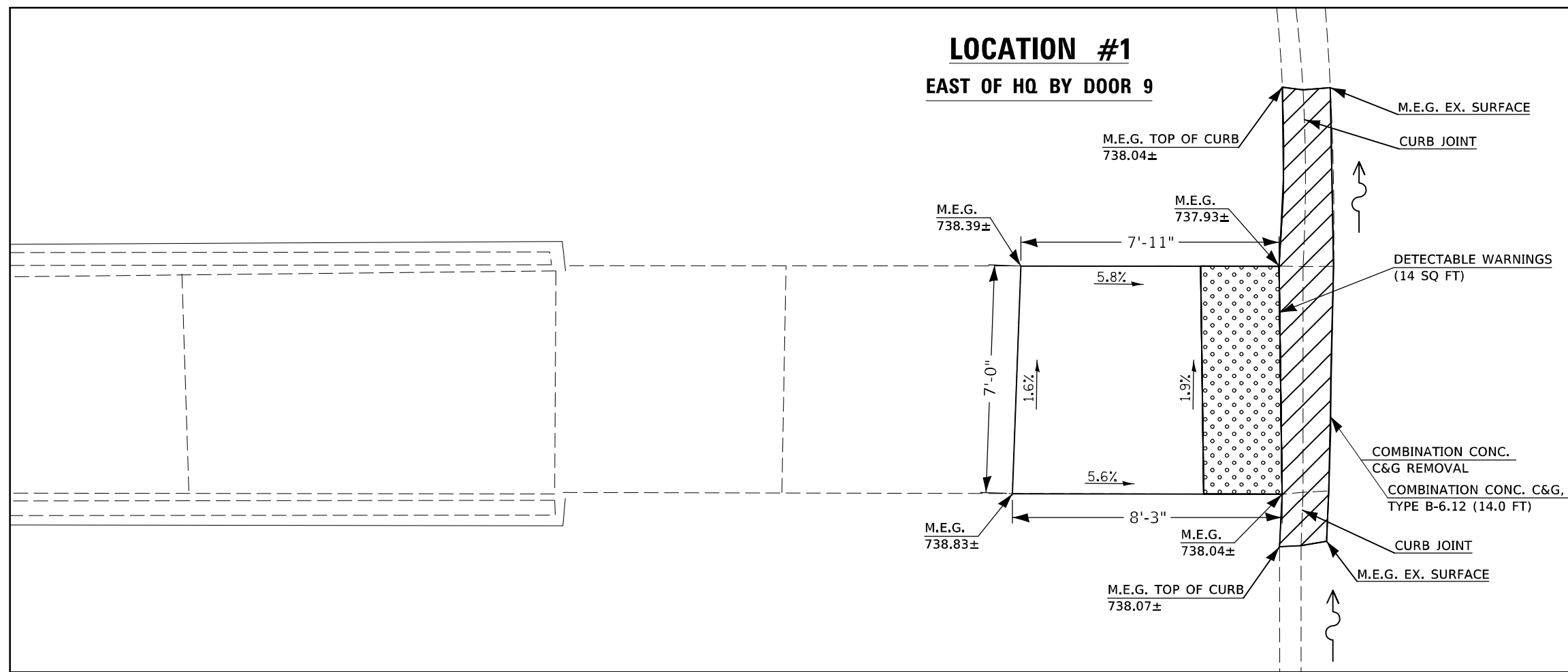
**STATE OF ILLINOIS
DEPARTMENT OF TRANSPORTATION**

**PAVEMENT MARKING PLAN SHEET
SECTION D - SIGN SHOP**

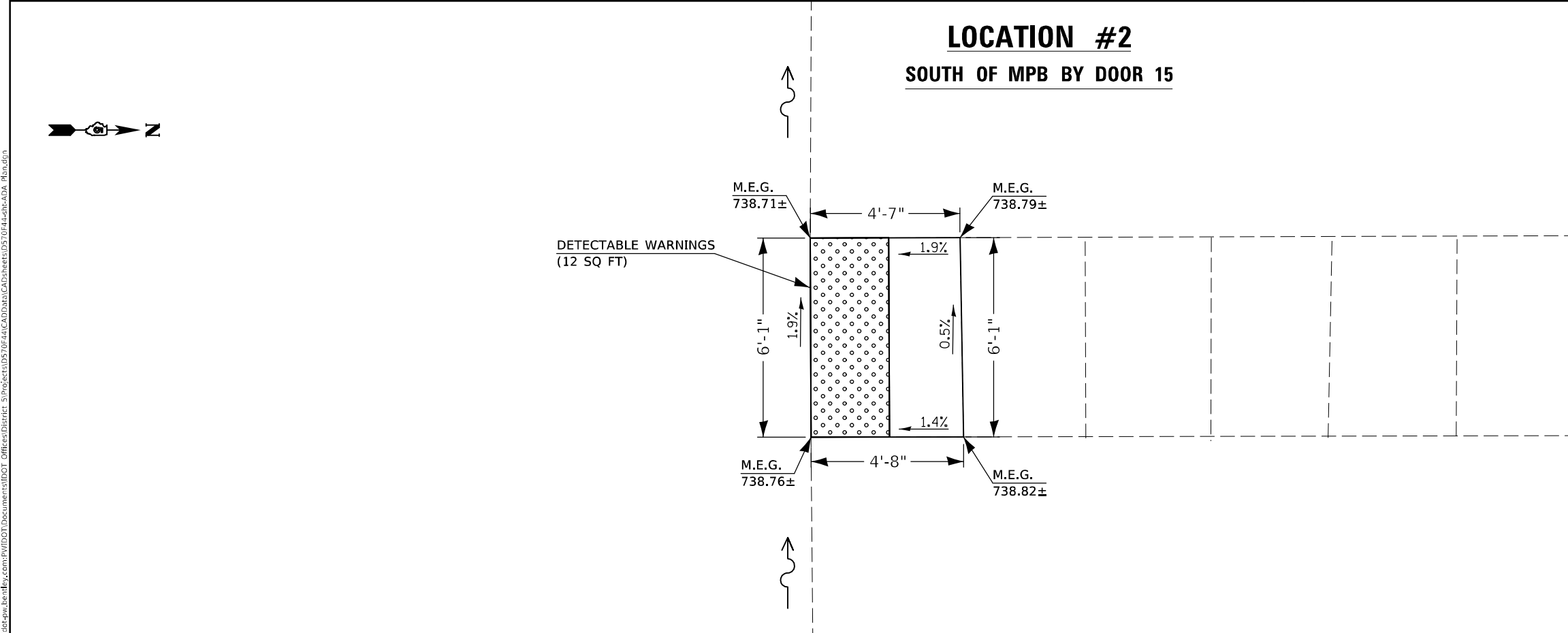
SCALE: SHEET 5 OF 5 SHEETS STA. TO STA.

F.A. RTE.	SECTION	COUNTY	TOTAL SHEETS	SHEET NO.
	PARIS IMP 2022-1	EDGAR	20	16
CONTRACT NO. 70F44				
ILLINOIS FED. AID PROJECT				

LOCATION #1
EAST OF HQ BY DOOR 9



LOCATION #2
SOUTH OF MPB BY DOOR 15



- NOTES: (ALL LOCATIONS)**
1. M.E.G. = MATCH EXISTING GRADE
 2. EXISTING CONDITIONS MAY VARY SLIGHTLY IN THE FIELD. THE ENGINEER CAN ADJUST GRADES AND TIE IN LOCATIONS AS NECESSARY TO CONSTRUCT RAMP. ANY ADJUSTMENTS MADE BY THE SHALL MEET ADA REQUIREMENTS FOR CURB RAMPS.
 3. MAX. ALLOWABLE RUNNING SLOPE OF RAMP = (8.3%), [$< 7\%$ PREFERRED]
 4. MAX. ALLOWABLE RUNNING SLOPE OF TURNING SPACE = 1:50 (2%), [$< 1.5\%$ PREFERRED]
 5. MIN. ALLOWABLE WIDTH OF RAMP = 4'
 6. MAX. ALLOWABLE CROSS SLOPE OF SIDEWALK LANDING = 1:50 (2%), [1.5% PREFERRED]
 7. AREAS OF DISTURBED EARTH AROUND PEDESTRIAN CURB RAMPS SHALL BE SEEDED, FERTILIZED, MULCHED ACCORDING TO ARTICLES 250.04 AND 251.03 (c) AS SOON AS EACH AREA IS AS DIRECTED BY THE ENGINEER. THE COST THESE ITEMS SHALL BE INCLUDED IN THE COST THE VARIOUS RELATED ITEMS AND NO COMPENSATION WILL BE ALLOWED.

MODEL: I:\MODELS\MHMF
 FILE: MHMF_Plan\IUC-PA-ber.dwg, com\FW\DOT\Documents\DOT_office\Dir\dr: S:\Project\1057044\CADD\Drawn\CAD\sheet\1057044_rh-ADA_Rib.dwg

USER NAME = Gosnell	DESIGNED -	REVISED -
PLOT SCALE = 40:0' = 1" / lin.	DRAWN -	REVISED -
PLOT DATE = 2/2/2022	CHECKED -	REVISED -
	DATE -	REVISED -

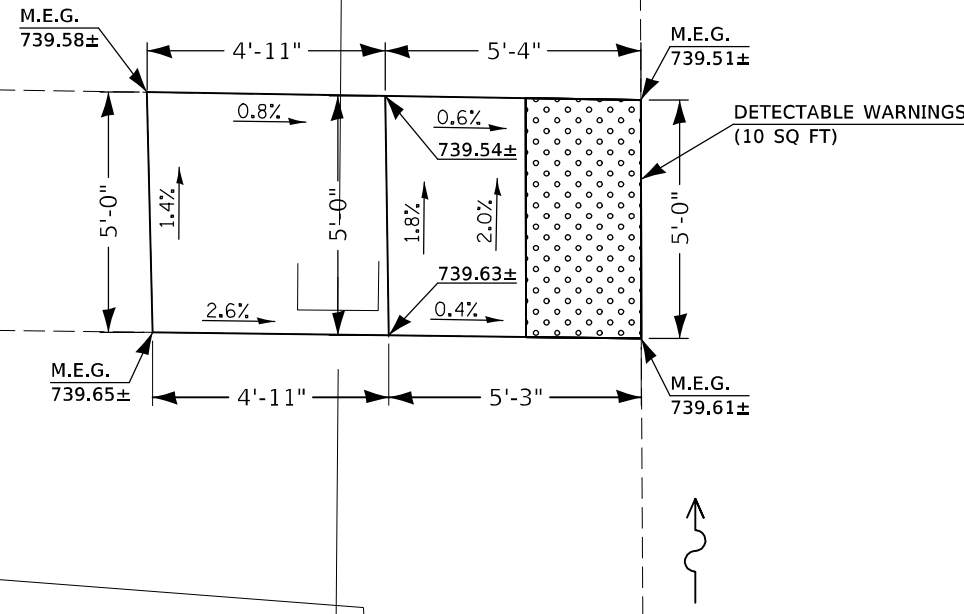
STATE OF ILLINOIS
DEPARTMENT OF TRANSPORTATION

EAST OF HQ BY DOOR 9 RAMP DETAIL
SOUTH OF MPB BY DOOR 15 RAMP DETAIL

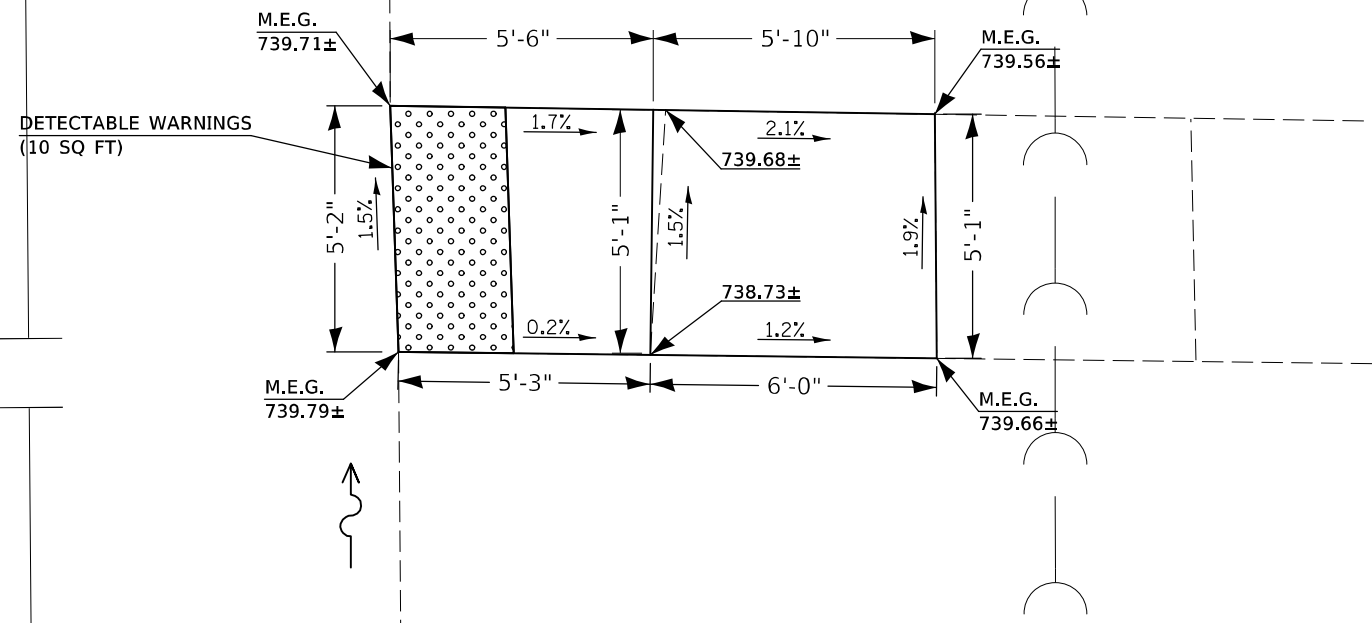
SCALE: SHEET 1 OF 3 SHEETS STA. TO STA.

F.A. RTE.	SECTION	COUNTY	TOTAL SHEETS	SHEET NO.
	PARIS IMP 2022-1	EDGAR	20	17
CONTRACT NO. 70F44				
ILLINOIS FED. AID PROJECT				

LOCATION #3
EAST PARKING LOT ISLAND (EASTSIDE)



LOCATION #4
EAST PARKING LOT ISLAND (WESTSIDE)



- NOTES: (ALL LOCATIONS)**
1. M.E.G. = MATCH EXISTING GRADE
 2. EXISTING CONDITIONS MAY VARY SLIGHTLY IN THE FIELD. THE ENGINEER CAN ADJUST GRADES AND TIE IN LOCATIONS AS NECESSARY TO CONSTRUCT RAMP. ANY ADJUSTMENTS MADE BY THE SHALL MEET ADA REQUIREMENTS FOR CURB RAMPS.
 3. MAX. ALLOWABLE RUNNING SLOPE OF RAMP = (8.3%), [$< 7\%$ PREFERRED]
 4. MAX. ALLOWABLE RUNNING SLOPE OF TURNING SPACE = 1:50 (2%), [$< 1.5\%$ PREFERRED]
 5. MIN. ALLOWABLE WIDTH OF RAMP = 4'
 6. MAX. ALLOWABLE CROSS SLOPE OF SIDEWALK LANDING = 1:50 (2%), [1.5% PREFERRED]
 7. AREAS OF DISTURBED EARTH AROUND PEDESTRIAN CURB RAMPS SHALL BE SEEDED, FERTILIZED, MULCHED ACCORDING TO ARTICLES 250.04 AND 251.03 (c) AS SOON AS EACH AREA IS AS DIRECTED BY THE ENGINEER. THE COST THESE ITEMS SHALL BE INCLUDED IN THE COST THE VARIOUS RELATED ITEMS AND NO COMPENSATION WILL BE ALLOWED.

MODEL: I:\MODELS\MHMF
 FILE: MHMF_Plan\IUCRPA_bentley.com\PIV\DOT\Documents\DOT_office\Dir\dir: S:\Project\10570844\CADD\Drawn\CAD\Sheet\10570844_rh-ADA_R18a.dwg

USER NAME = Gosnell	DESIGNED -	REVISED -
	DRAWN -	REVISED -
PLOT SCALE = 40:0' = 1" / lin.	CHECKED -	REVISED -
PLOT DATE = 2/2/2022	DATE -	REVISED -

STATE OF ILLINOIS
DEPARTMENT OF TRANSPORTATION

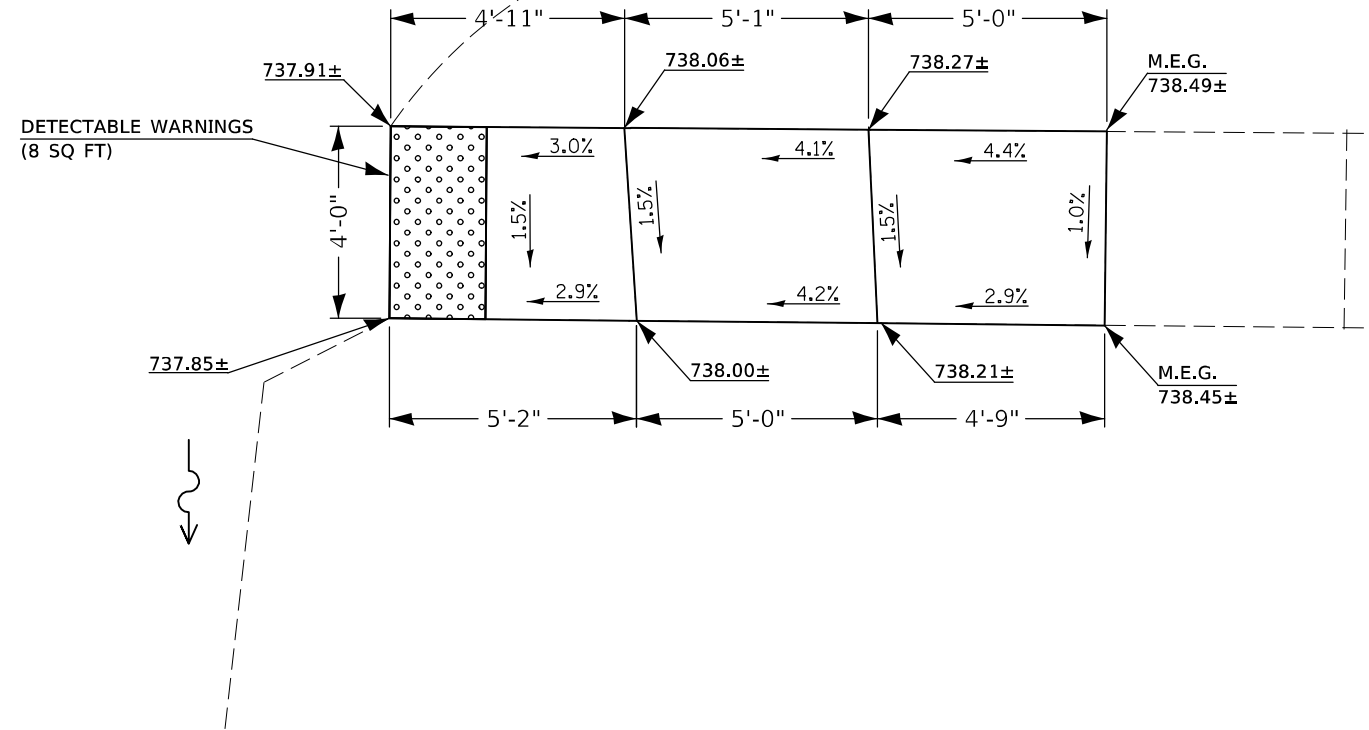
EAST PARKING LOT ISLAND (EASTSIDE) RAMP DETAIL
EAST PARKING LOT ISLAND (WESTSIDE) RAMP DETAIL

SCALE: SHEET 2 OF 3 SHEETS STA. TO STA.

F.A. RTE.	SECTION	COUNTY	TOTAL SHEETS	SHEET NO.
	PARIS IMP 2022-1	EDGAR	20	18
CONTRACT NO. 70F44				
ILLINOIS FED. AID PROJECT				

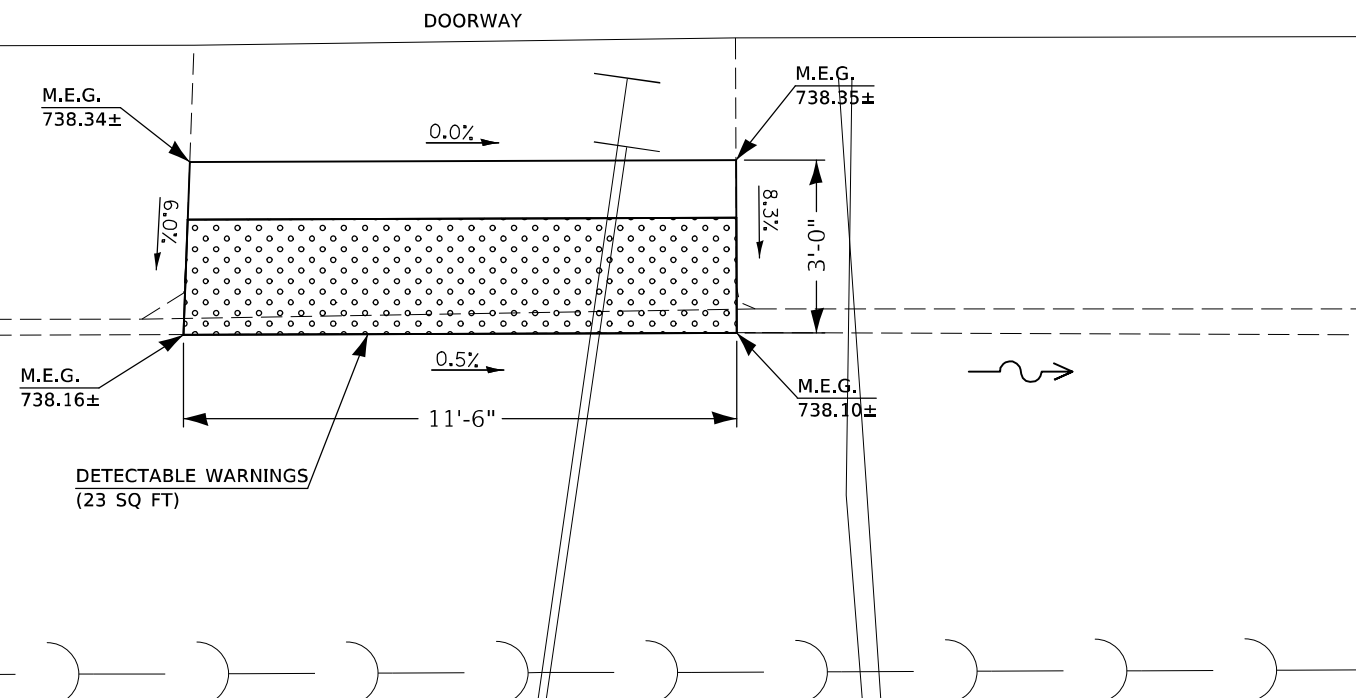
LOCATION #5

SOUTH OF CMS GARAGE BY DOOR 16



LOCATION #6

SOUTH OF SIGN SHOP



NOTES: (ALL LOCATIONS)

1. M.E.G. = MATCH EXISTING GRADE
2. EXISTING CONDITIONS MAY VARY SLIGHTLY IN THE FIELD. THE ENGINEER CAN ADJUST GRADES AND TIE IN LOCATIONS AS NECESSARY TO CONSTRUCT RAMP. ANY ADJUSTMENTS MADE BY THE SHALL MEET ADA REQUIREMENTS FOR CURB RAMPS.
3. MAX. ALLOWABLE RUNNING SLOPE OF RAMP = (8.3%), [$< 7\%$ PREFERRED]
4. MAX. ALLOWABLE RUNNING SLOPE OF TURNING SPACE = 1:50 (2%), [$< 1.5\%$ PREFERRED]
5. MIN. ALLOWABLE WIDTH OF RAMP = 4'
6. MAX. ALLOWABLE CROSS SLOPE OF SIDEWALK LANDING = 1:50 (2%), [1.5% PREFERRED]
7. AREAS OF DISTURBED EARTH AROUND PEDESTRIAN CURB RAMPS SHALL BE SEEDED, FERTILIZED, MULCHED ACCORDING TO ARTICLES 250.04 AND 251.03 (c) AS SOON AS EACH AREA IS AS DIRECTED BY THE ENGINEER. THE COST THESE ITEMS SHALL BE INCLUDED IN THE COST THE VARIOUS RELATED ITEMS AND NO COMPENSATION WILL BE ALLOWED.



MODEL: I:\MODELS\MNMF...
 FILE: MNMF...
 PROJECT: I:\PROJECTS\DOT...
 USER: GOSN@ICL...
 DATE: 2/2/2022

USER NAME = GOSN@ICL	DESIGNED -	REVISED -
PLOT SCALE = 40:0' = 1" / lin.	DRAWN -	REVISED -
PLOT DATE = 2/2/2022	CHECKED -	REVISED -
	DATE -	REVISED -

**STATE OF ILLINOIS
DEPARTMENT OF TRANSPORTATION**

**SOUTH OF CMS GARAGE BY DOOR 16 RAMP DETAIL
SOUTH OF SIGN SHOP RAMP DETAIL**

SCALE: SHEET 3 OF 3 SHEETS STA. TO STA.

F.A. RTE.	SECTION	COUNTY	TOTAL SHEETS	SHEET NO.
	PARIS IMP 2022-1	EDGAR	20	19
CONTRACT NO. 70F44				
ILLINOIS FED. AID PROJECT				

SIGN R7-I 101

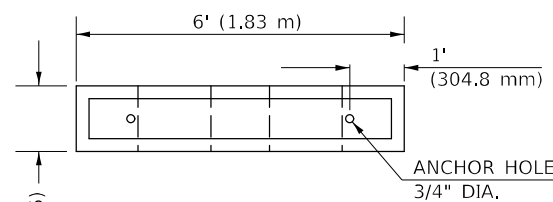


COLOR: LEGEND AND BORDER GREEN NON-REFLECTORIZED BACKGROUND WHITE REFLECTORIZED

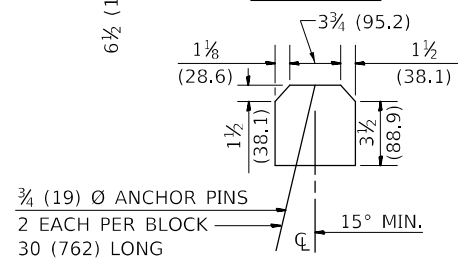
SIGN SIZE	DIMENSIONS							
	A	B	C	D	E	F	G	H
6 x 12 (152.4 x 304.8)	12 (304.8)	6 (152.4)	1.5 (38.1)	4.5 (114.3)	1.15 (29.2)	3.4 (86.4)	4.6 (116.8)	4.0 (101.6)

SIGN SIZE	SERIES Lines	Margin	Border	BLK Std
6 x 12 (152.4 x 304.8)	1/3A	0.37 (9.5)	0.37 (9.5)	B5-126

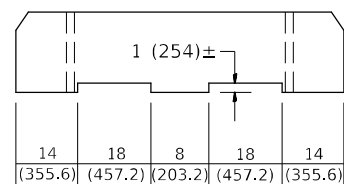
To be used with R7-8
* \$ = SERIES 3A "S"



PLAN VIEW



END VIEW



ELEVATION VIEW

NOTE: NOMINAL DIMENSIONS OF BLOCKS MAY VARY
CLASS P.C. CONCRETE SHALL BE USED THROUGHOUT.

BUMPER BLOCK DETAIL

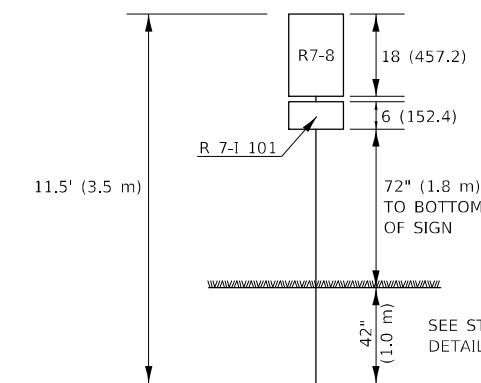
SIGN R7-8



ARROW
(USE ARROW AT
LOCATIONS WHERE
THERE ARE TWO
HANDICAP SPOTS
NEXT TO EACH OTHER.)

COLORS

LEGEND AND BORDER - GREEN
WHITE SYMBOL ON BLUE BACKGROUND
BACKGROUND - WHITE

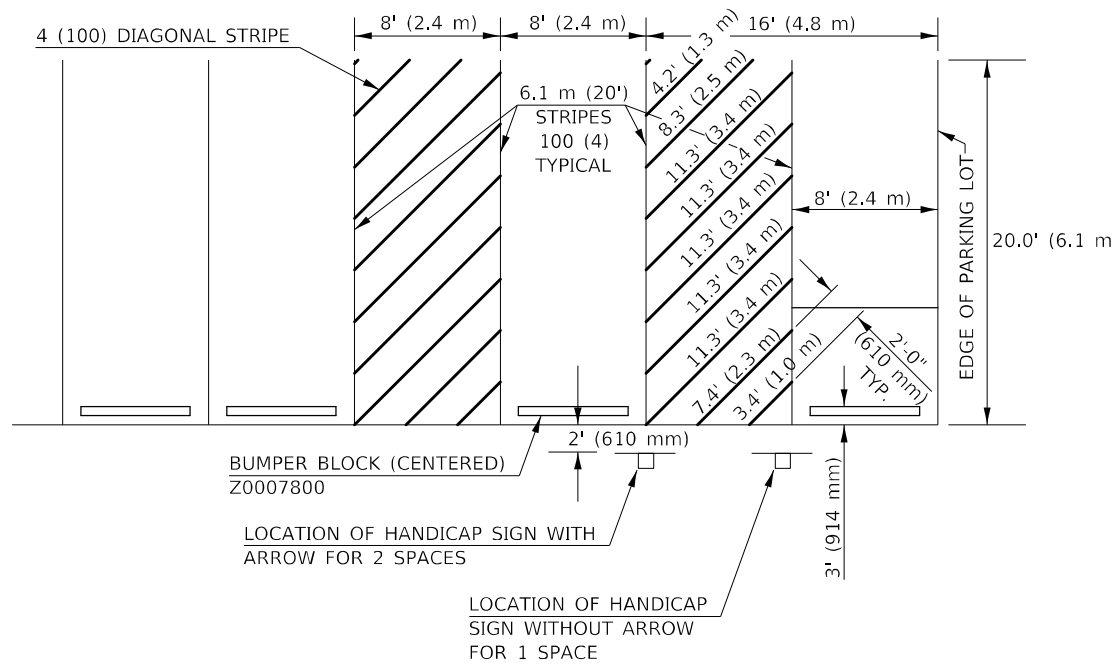


SEE STD. 720011 & 729001 FOR
DETAILS OF METAL POST, TYPE A

ESTIMATED QUANTITY

72900110 METAL POST - TYPE A	= 11.5' (3.5 m)
72000100 SIGN PANEL R 7-I 101	0.5 SQ.FT. (.046 m ²)
72000100 SIGN PANEL R 7-8	1.5 SQ.FT. (.139 m ²)
TOTAL	= 2.0 SQ.FT. (.185 m²)

SIGN POST DETAILS



THIS DRAWING HAS NO SCALE.

ESTIMATED QUANTITY OF PAVEMENT
MARKING-LINE 4" (100 mm) (FOR 1 SPACE)
TOTAL DIAGONALS = 80' (24.4 m)

SEE DETAIL FOR HANDICAP SIGN.

DETAIL OF PARKING SPACES

Note: All dimensions are in INCHES
(millimeters) unless otherwise shown.

DISTRICT 5 DETAIL NO. 72000100

USER NAME = Gosnell	DESIGNED -	REVISED - 11/06
	DRAWN -	REVISED - 12/27/17 JWS
PLOT SCALE = 40.0000' / in.	CHECKED -	REVISED -
PLOT DATE = 2/2/2022	DATE -	REVISED -

STATE OF ILLINOIS
DEPARTMENT OF TRANSPORTATION

DISABLED PARKING

SCALE: SHEET 1 OF 1 SHEETS STA. TO STA.

F.A. RTE.	SECTION	COUNTY	TOTAL SHEETS	SHEET NO.
	PARIS IMP 2022-1	EDGAR	20	20
CONTRACT NO. 70F44				
ILLINOIS FED. AID PROJECT				