

STATE OF ILLINOIS
DEPARTMENT OF TRANSPORTATION

F.A.P. RTE.	SECTION	COUNTY	TOTAL SHEETS	SHEET NO.
619	(71X)RS, MG	LASALLE	9	1
		ILLINOIS	CONTRACT NO. 66M27	

INDEX OF SHEETS

1. COVER SHEET
2. GENERAL NOTES
3. SUMMARY OF QUANTITIES
4. TYPICALS
5. SCHEDULES
6. GENERAL SITE PLAN - LASALLE MAINTENANCE FACILITY
7. SITE PLAN - EXISTING SURFACE ELEVATIONS
8. SITE PLAN - REMOVAL DETAILS
9. SITE PLAN - RESURFACING

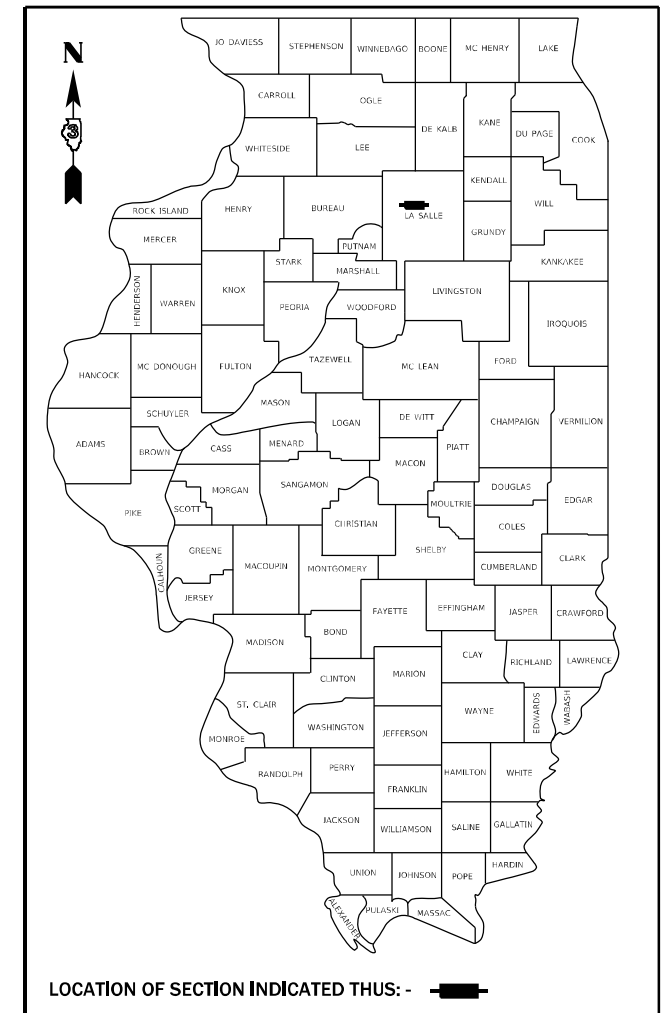
STANDARDS

- | | |
|-----------|--|
| 000001-08 | STANDARD SYMBOLS, ABBREVIATIONS AND PATTERNS |
| 001006 | DECIMAL OF AN INCH AND OF A FOOT |
| 701001-02 | OFF-ROAD OPERATIONS 2L, 2W, MORE THAN 15' (4.5 m) AWAY |
| 701006-05 | OFF-ROAD OPERATIONS 2L, 2W, 15' (4.5 m) TO 24" (600 MM) FROM PAVEMENT EDGE |
| 701901-08 | TRAFFIC CONTROL DEVICES |

PROPOSED HIGHWAY PLANS

F.A.P. ROUTE 619 (IL 351)
SECTION (71X)RS, MG
PROJECT CAPITOL DEVELOPEMENT BOARD
MILLING AND RESURFACING
LASALLE MAINTENANCE FACILITY
LASALLE COUNTY
C-93-047-22

D-93-025-22



FUNCTIONAL CLASSIFICATION

URBAN - MINOR ARTERIAL

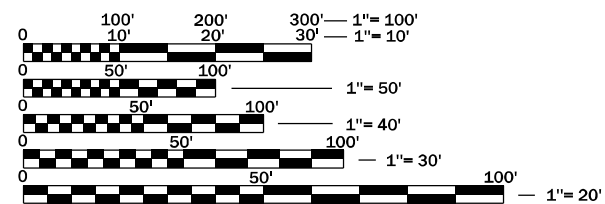
F.A.P. ROUTE 6190 (IL 351)

2019 ADT = 3750

P.V. 91.5 % S.U. 4.0 % M.U. 4.5 %

PROJECT LOCATION

I.D.O.T. DISTRICT NO. 3
LASALLE MAINTENANCE FACILITY
2929 E. 350th ROAD



FULL SIZE PLANS HAVE BEEN PREPARED USING STANDARD ENGINEERING SCALES. REDUCED SIZED PLANS WILL NOT CONFORM TO STANDARD SCALES. IN MAKING MEASUREMENTS ON REDUCED PLANS, THE ABOVE SCALES MAY BE USED.

J.U.L.I.E.
JOINT UTILITY LOCATION INFORMATION FOR EXCAVATORS
1-800-892-0123
OR 811

PROJECT ENGINEER YOGESH PATEL
UNIT CHIEF RON WOODSHANK
DISTRICT 3 NO. (815) 434-6131
CONTRACT NO. 66M27



STATE OF ILLINOIS
DEPARTMENT OF TRANSPORTATION

SUBMITTED January 31, 2022
[Signature]
REGIONAL ENGINEER

March 25, 2022
[Signature]
ENGINEER OF DESIGN AND ENVIRONMENT

March 2, 2022
[Signature]
DIRECTOR OF HIGHWAYS PROJECT IMPLEMENTATION

**PRINTED BY THE AUTHORITY
OF THE STATE OF ILLINOIS**

GENERAL NOTES

PLAN DIMENSIONS AND DETAILS RELATIVE TO EXISTING PLANS ARE SUBJECT TO NOMINAL CONSTRUCTION VARIATIONS. THE CONTRACTOR SHALL FIELD VERIFY EXISTING DIMENSIONS AND DETAILS AFFECTING NEW CONSTRUCTION AND MAKE NECESSARY APPROVED ADJUSTMENTS PRIOR TO CONSTRUCTION OR ORDERING OF MATERIALS. SUCH VARIATIONS SHALL NOT BE CAUSE FOR ADDITIONAL COMPENSATION FOR A CHANGE IN SCOPE OF WORK; HOWEVER, THE CONTRACTOR WILL BE PAID FOR THE QUANTITY ACTUALLY FURNISHED AT THE UNIT PRICE BID FOR THE WORK.

THE THICKNESS OF HMA SHOWN ON THE PLANS IS THE NOMINAL THICKNESS. DEVIATIONS FROM THE NOMINAL THICKNESS WILL BE PERMITTED WHEN SUCH DEVIATIONS OCCUR DUE TO IRREGULARITIES IN THE EXISTING SURFACE OR BASE ON WHICH THE HMA IS PLACED.

THE ENGINEER WILL BE THE SOLE JUDGE CONCERNING CURING TIME FOR THE VARIOUS HMA LIFTS.

ALL ELEVATIONS REFERRING TO U.S.G.S. MEAN SEA LEVEL DATUM.

ALL EXCAVATED MATERIAL, WHICH INCLUDES DIGGING OR GRADING OF ANY SOIL OR FILL MATERIAL, WITH THE EXCEPTION OF AGGREGATE FILLS, MUST BE INCORPORATED WITHIN THE IDOT RIGHT OF WAY DUE TO ENVIRONMENTAL DOCUMENTATION REQUIREMENTS.

ON EXISTING PAVEMENT WHICH MAY BE SUPERELEVATED, THE NEW HMA PAVEMENT SHALL BE BUILT WITH THE SAME SUPERELEVATION UNLESS NEW SUPERELEVATION RATES ARE GIVEN ON THE PLANS.

ANY REFERENCE TO A STANDARD IN THESE PLANS SHALL BE INTERPRETED TO MEAN THE EDITION AS INDICATED BY THE SUBNUMBER SHOWN IN THE LIST OF STANDARDS OR THE COPY INCLUDED IN THESE PLANS.

THE FOLLOWING RATES OF APPLICATION HAVE BEEN USED IN CALCULATING PLAN QUANTITIES:

GRANULAR MATERIALS		2.05	TONS / CU YD
HMA BINDER CSE. (HAND METHOD)		0.0005	TONS / SQ YD
BITUMINOUS MATERIALS (TACK COAT)	MILLED HMA	0.05	LBS / SQ FT
	NEW HMA	0.025	
HMA RESURFACING		112	LBS / SQ YD / IN

ALL DAMAGE TO DEPARTMENT OWNED ABOVE/UNDERGROUND FACILITIES, CAUSED BY THE CONTRACTOR SHALL BE REPAIRED TO THE SATISFACTION OF THE DEPARTMENT AT THE CONTRACTOR'S EXPENSE. THIS SHALL INCLUDE ALL TEMPORARY REPAIRS REQUIRED TO KEEP THE FACILITY OPERATIONAL WHILE MATERIAL IS BEING OBTAINED TO MAKE PERMANENT REPAIRS.

THE CONTRACTOR SHALL CONTACT JULIE AT LEAST 48 HOURS PRIOR TO EXCAVATION TO DETERMINE WHICH UTILITIES ARE IN THE AREA.

COMMITMENTS

HMA MIXTURE REQUIREMENT TABLE

LOCATION(S):	ENTIRE PROJECT	ENTIRE PROJECT
MIXTURE USE(S):	HMA BINDER	HMA SURFACE
BINDER GRADE (PG):	SBS PG70-28	SBS PG70-28
DESIGN AIR VOIDS:	4.0% @ N70	4.0% @ N70
MIXTURE COMPOSITION: (MIXTURE GRADATION)	IL 19.0	IL 9.5
FRICTION AGGREGATE:	N/A	MIXTURE C
MIXTURE WEIGHT:	112.0 LB/SY/IN	112.0 LB/SY/IN
QUALITY MANAGEMENT PROGRAM:	QC/QA	QC/QA
SUBLOT SIZE:	N/A	N/A
DENSITY TEST METHOD:	GROWTH CURVE	GROWTH CURVE

STATE OF ILLINOIS
DEPARTMENT OF TRANSPORTATION
DISTRICT THREE
AS BUILT INFORMATION

DATE: _____

SUPERVISING CONSTRUCTION FIELD ENGINEER

PREPARED BY: _____
DISTRICT STUDIES & PLANS ENGINEER

RESIDENT ENGINEER / TECHNICIAN

EXAMINED BY: _____
DISTRICT CONSTRUCTION ENGINEER

START & END DATES OF CONSTRUCTION: _____

INSPECTORS: _____

DISTRICT MATERIALS ENGINEER

DISTRICT OPERATIONS ENGINEER

**STATE OF ILLINOIS
DEPARTMENT OF TRANSPORTATION**

GENERAL NOTES

USER NAME = woodshank	DESIGNED -	REVISED -
	DRAWN -	REVISED -
PLOT SCALE = 100,0000' / in.	CHECKED -	REVISED -
PLOT DATE = 1/23/2022	DATE -	REVISED -

SCALE: SHEET 1 OF 1 SHEETS STA. TO STA.

F.A.P. RTE.	SECTION	COUNTY	TOTAL SHEETS	SHEET NO.
619	(71X)RS.MG	LASALLE	9	2
			CONTRACT NO. 66M27	
		ILLINOIS FED. AID PROJECT		

MODEL: Default
FILE: \\blmfe-pw-bentley.com\P\IDOT\Documents\IDOT Office\District 3\Project\0366M27\CADD\0366M27 - PLANS.dgn

CODE NO.	ITEM	UNIT	TOTAL QUANTITY	CONSTRUCTION CODE	
				CAPITOL DEVELOPMENT BOARD	
				100% STATE	
				ROADWAY	
		0005		URBAN	
35800100	PREPARATION OF BASE	SQ YD	8164	8164	
35800200	AGGREGATE BASE REPAIR	TON	97	97	
40600290	BITUMINOUS MATERIALS (TACK COAT)	POUND	9034	9034	
40600906	POLYMERIZED HOT-MIX ASPHALT BINDER COURSE (HAND METHOD), N70	TON	10	10	
40600990	TEMPORARY RAMP	SQ YD	2016	2016	
40603235	POLYMERIZED HOT-MIX ASPHALT BINDER COURSE, IL-19.0, N70	TON	2372	2372	
40604152	POLYMERIZED HOT-MIX ASPHALT SURFACE COURSE, IL-9.5, MIX "C", N70	TON	1582	1582	
44000165	HOT-MIX ASPHALT SURFACE REMOVAL 4"	SQ YD	10662	10662	
67100100	MOBILIZATION	L SUM	1	1	
X0320050	CONSTRUCTION LAYOUT (SPECIAL)	L SUM	1	1	

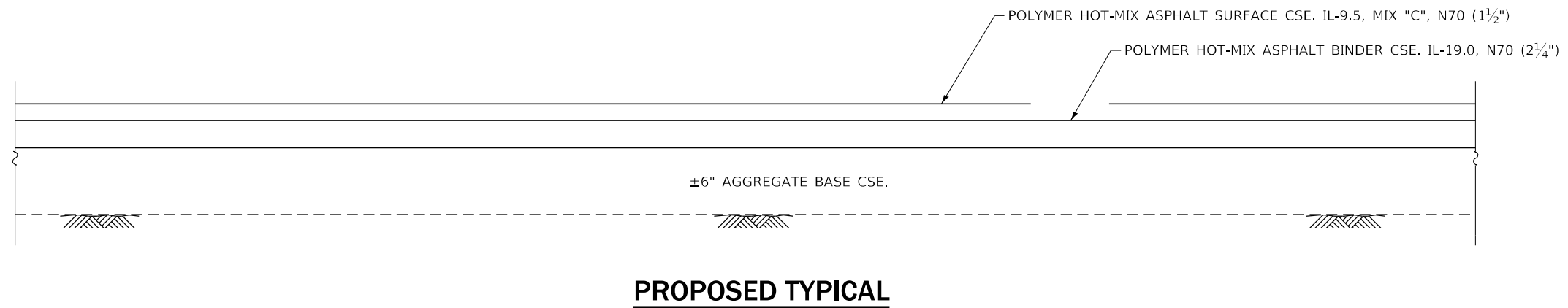
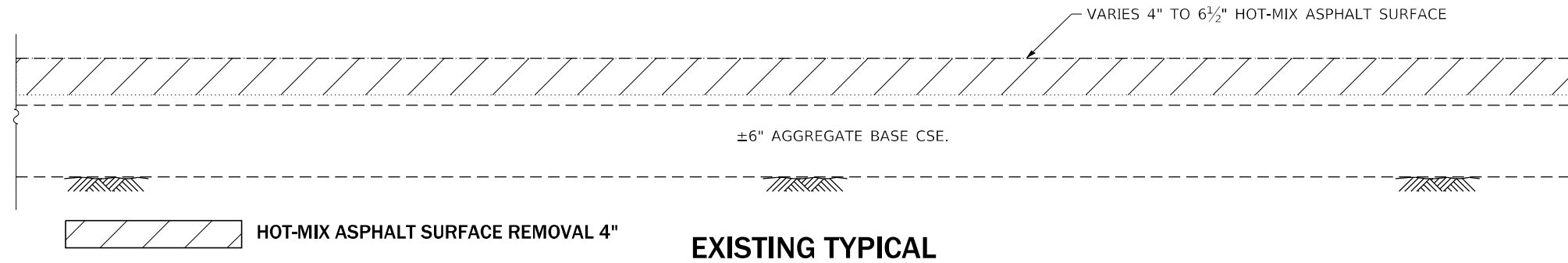
MODEL: Default
 FILE NAME: p:\ultra-cw-beadby.com\PIV\DOT\Documents\DOT Office\Dir\rdt_3\Project\0366M27\CAD\Drawn\0366M27 - PLANS.dgn

USER NAME = woodshank	DESIGNED -	REVISED -
	DRAWN -	REVISED -
PLOT SCALE = 100,0000' / in.	CHECKED -	REVISED -
PLOT DATE = 1/23/2022	DATE -	REVISED -

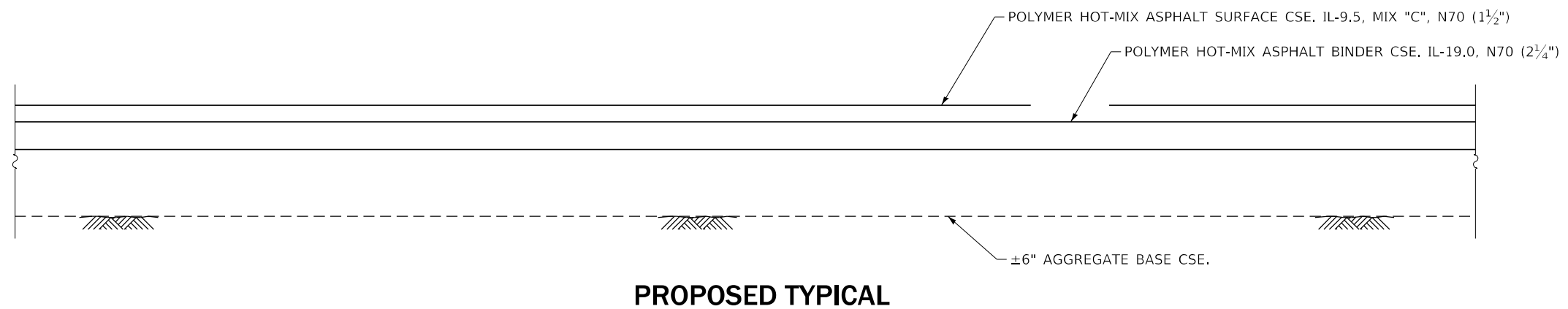
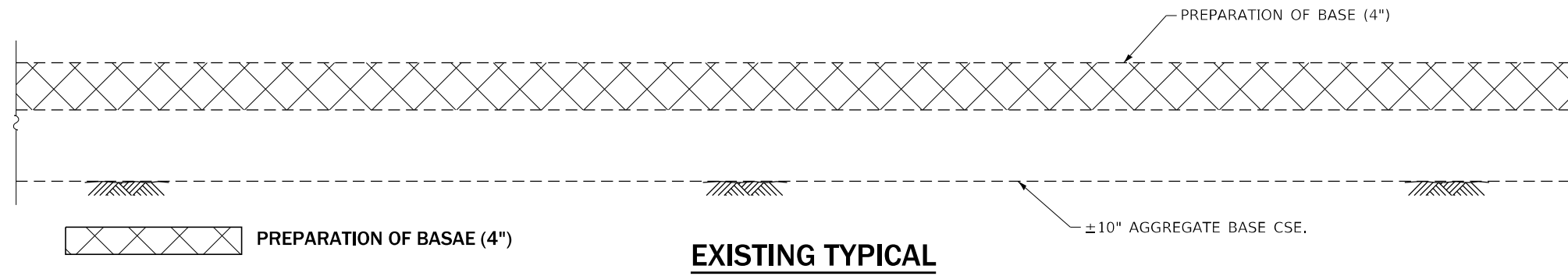
STATE OF ILLINOIS
DEPARTMENT OF TRANSPORTATION

SUMMARY OF QUANTITIES			
SCALE:	SHEET 1 OF 1 SHEETS	STA.	TO STA.

F.A.P. RTE.	SECTION	COUNTY	TOTAL SHEETS	SHEET NO.
619	(71X)RS.MG	LASALLE	9	3
			CONTRACT NO. 66M27	
ILLINOIS FED. AID PROJECT				



AREA 1



AREA 2

MODEL: Default
 FILE: \\na11c-pw-bentley.com\P\DOT\Documents\DOT Office\Dir\ct: 3\Project\366627\CADD\Draw: 0366M27 - PLANS.dgn

USER NAME = woodshank	DESIGNED -	REVISED -
PLOT SCALE = 100,0000 ' / in.	DRAWN -	REVISED -
PLOT DATE = 1/23/2022	CHECKED -	REVISED -
	DATE -	REVISED -

**STATE OF ILLINOIS
DEPARTMENT OF TRANSPORTATION**

TYPICAL SECTIONS

SCALE: SHEET 1 OF 1 SHEETS STA. TO STA.

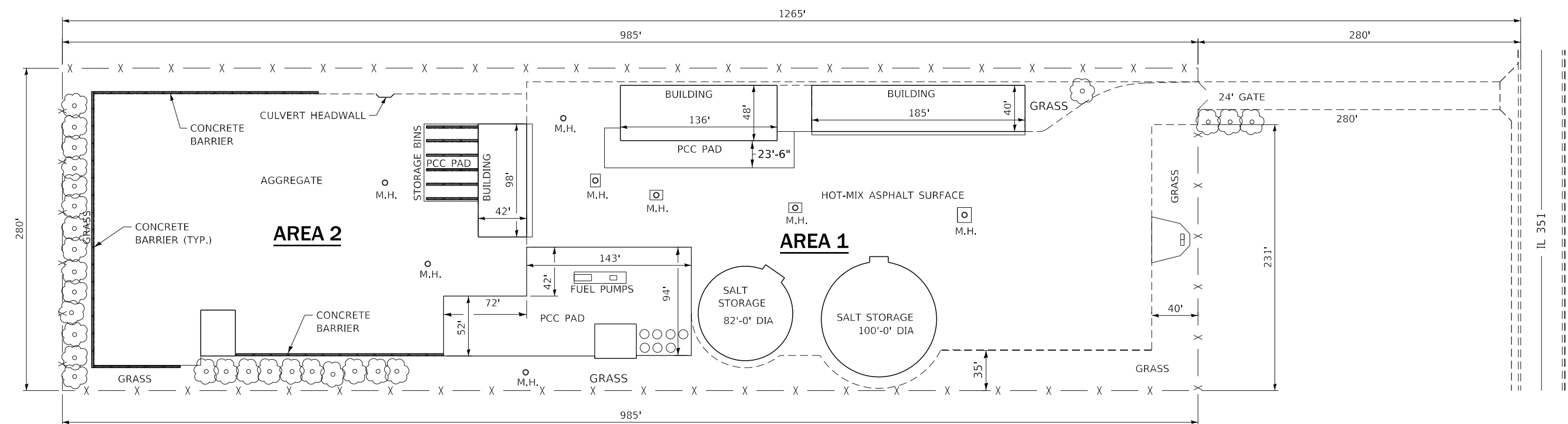
F.A.P. RTE.	SECTION	COUNTY	TOTAL SHEETS	SHEET NO.
619	(71X)RS.MG	LASALLE	9	4
			CONTRACT NO. 66M27	
ILLINOIS FED. AID PROJECT				

SCHEDULE - RESURFACING

LOCATION	PREPARATION OF BASE	HOT-MIX ASPHALT SURFACE REMOVAL 4"	BITUMINOUS MATERIALS (TACK COAT)	POLYMERIZED HOT-MIX ASPHALT BINDER COURSE (HAND METHOD) N70	POLYMERIZED HOT-MIX ASPHALT BINDER COURSE IL-19.0 N70	POLYMERIZED HOT-MIX ASPHALT SURFACE COURSE IL-9.5 MIX "C" N70
	SQ YD	SQ YD	POUND	TON	TON	TON
AREA 1		10,662	7,197	10	1,343	896
AREA 2	8,164		1,837		1,029	686
TOTAL	8164	10662	9034	10	2372	1582

MODEL: Default
 FILE NAME: p:\ultra-cw-bee\paw.com\PIV\DOT\Documents\DOT Office\Dir\rdt_3\Project\0366M27\CADD\0366M27 - PLANS.dgn

USER NAME = woodshank	DESIGNED -	REVISED -	STATE OF ILLINOIS DEPARTMENT OF TRANSPORTATION	SCHEDULES		F.A.P. RTE.	SECTION	COUNTY	TOTAL SHEETS	SHEET NO.
PLOT SCALE = 100,0000' / in.	DRAWN -	REVISED -				619	(71X)RS.MG	LASALLE	9	5
PLOT DATE = 1/23/2022	CHECKED -	REVISED -		SCALE:		SHEET 1 OF 1 SHEETS		STA. TO STA.		CONTRACT NO. 66M27
	DATE -	REVISED -		ILLINOIS FED. AID PROJECT						



GENERAL SITE PLAN
ILLINOIS DEPARTMENT OF TRANSPORTATION
DISTRICT NO. 3
LASALLE MAINTENANCE FACILITY

MODEL: Default
 FILE: \\na16f-pw-bentley.com\P\W\DOT\Documents\1\DOT Office\District 3\Project\10366427\CADD\Drawings\PLANS.dgn

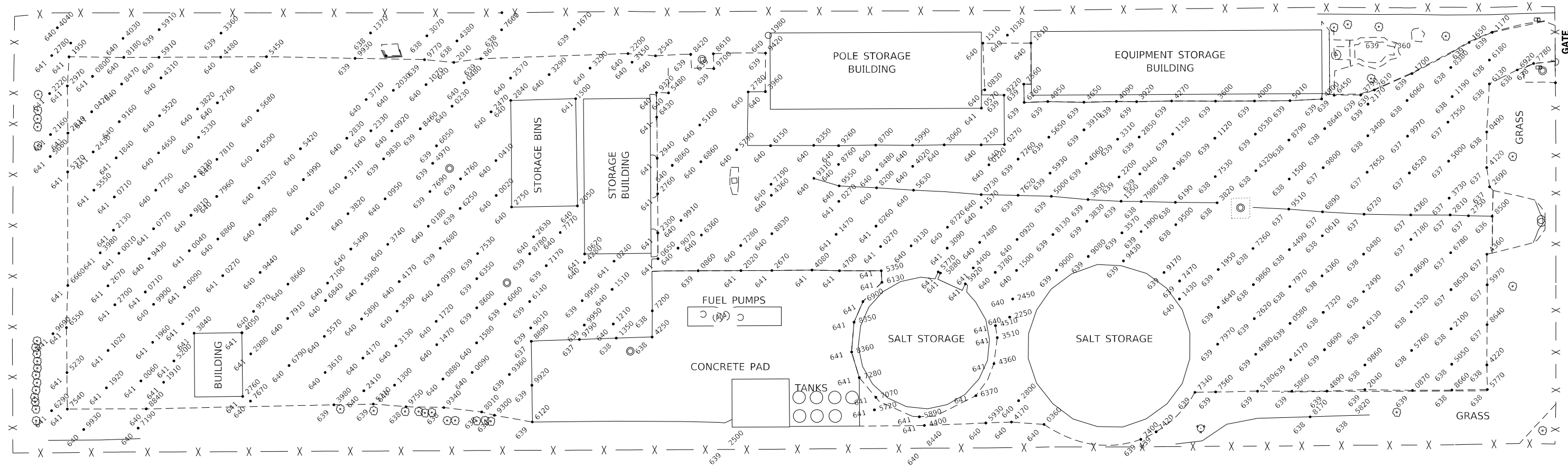
USER NAME = woodshank	DESIGNED -	REVISED -
	DRAWN -	REVISED -
PLOT SCALE = 100,0000' / in.	CHECKED -	REVISED -
PLOT DATE = 1/23/2022	DATE -	REVISED -

STATE OF ILLINOIS
DEPARTMENT OF TRANSPORTATION

GENERAL SITE PLAN LASALLE MAINTENANCE FACILITY	
SCALE:	SHEET 1 OF 1 SHEETS STA. TO STA.

F.A.P. RTE.	SECTION	COUNTY	TOTAL SHEETS	SHEET NO.
619	(71X)RS.MG	LASALLE	9	6
CONTRACT NO. 66M27			ILLINOIS FED. AID PROJECT	

BM #1: CHISELED "X" ON THE NE BOLT OF POLE FOUNDATION AT THE FUEL PUMPS.
ELEVATION 639.934 FT.



SITE PLAN
EXISTING GRADE ELEVATIONS
LASALLE MAINTENANCE YARD

MODEL: Default
FILE: LASALLE_MAINTENANCE_YARD.dwg
PROJECT: D:\Projects\666427\CADD\Drawings\666427_PLANS.dwg

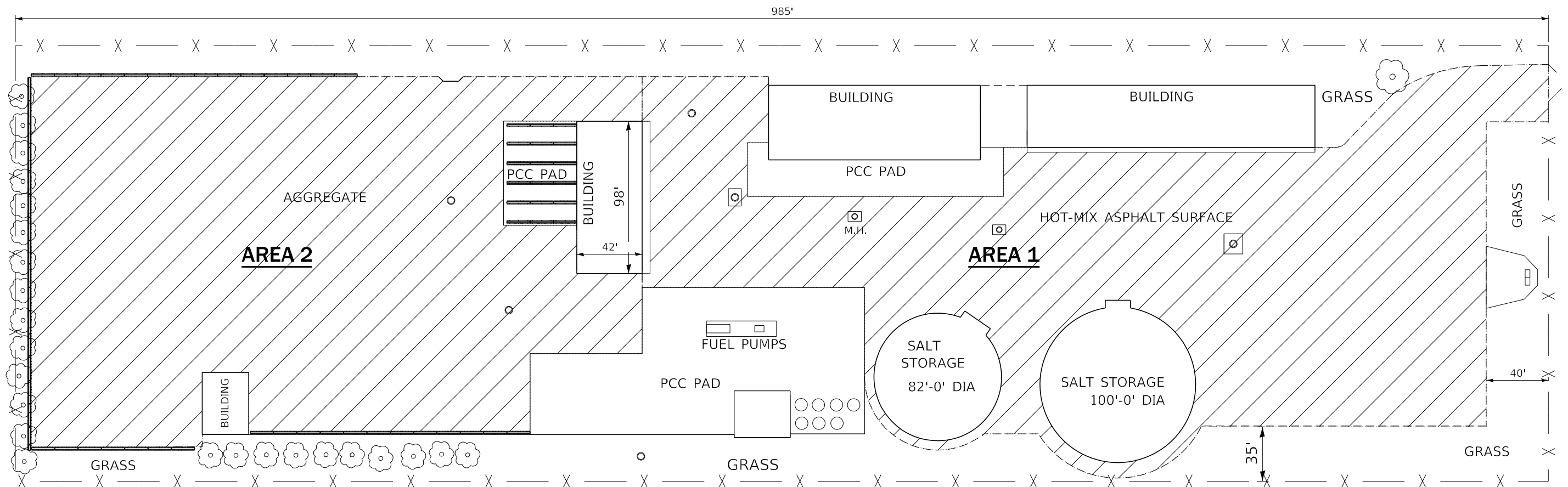
USER NAME = woodshank	DESIGNED -	REVISED -
	DRAWN -	REVISED -
PLOT SCALE = 100,0000' / in.	CHECKED -	REVISED -
PLOT DATE = 1/23/2022	DATE -	REVISED -

STATE OF ILLINOIS
DEPARTMENT OF TRANSPORTATION

SITE PLAN - EXISTING SURFACE ELEVATIONS
LASALLE MAINTENANCE FACILITY

SCALE: SHEET 1 OF 1 SHEETS STA. TO STA.

F.A.P. RTE. 619	SECTION (71X)RS.MG	COUNTY LASALLE	TOTAL SHEETS 9	SHEET NO. 7
			CONTRACT NO. 66M27	
		ILLINOIS FED. AID PROJECT		



**SITE PLAN
RESURFACING
LASALLE MAINENANCE YARD**

POLYMER HOT-MIX ASPHALT BINDER CSE, IL-19.0, N70 (2½" LIFT)
 POLYMER HOT-MIX ASPHALT SURFACE CSE, IL-9.5, MIX C, N70 (1½" LIFT)

MODEL: Default
 FILE: \\nasalle-pw-beadley.com\P\W\DOT\Documents\1\DOT_Offices\Dir\rdt_3\Project\1\366627\CADD\Drawings\PLANS.dwg

USER NAME = woodshank	DESIGNED -	REVISED -
PLOT SCALE = 100,0000' / in.	DRAWN -	REVISED -
PLOT DATE = 1/23/2022	CHECKED -	REVISED -
	DATE -	REVISED -

**STATE OF ILLINOIS
DEPARTMENT OF TRANSPORTATION**

**SITE PLAN - RESURFACING
LASALLE MAINTENANCE FACILITY**

SCALE: SHEET 1 OF 1 SHEETS STA. TO STA.

F.A.P. RTE. 619	SECTION (71X)RS.MG	COUNTY LASALLE	TOTAL SHEETS 9	SHEET NO. 9
ILLINOIS FED. AID PROJECT			CONTRACT NO. 66M27	