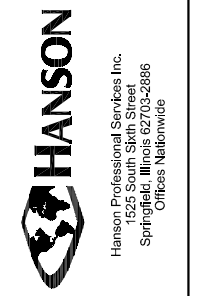


BY	
REVISION	
DATE	

LITCHFIELD MUNICIPAL AIRPORT  
LITCHFIELD, ILLINOIS

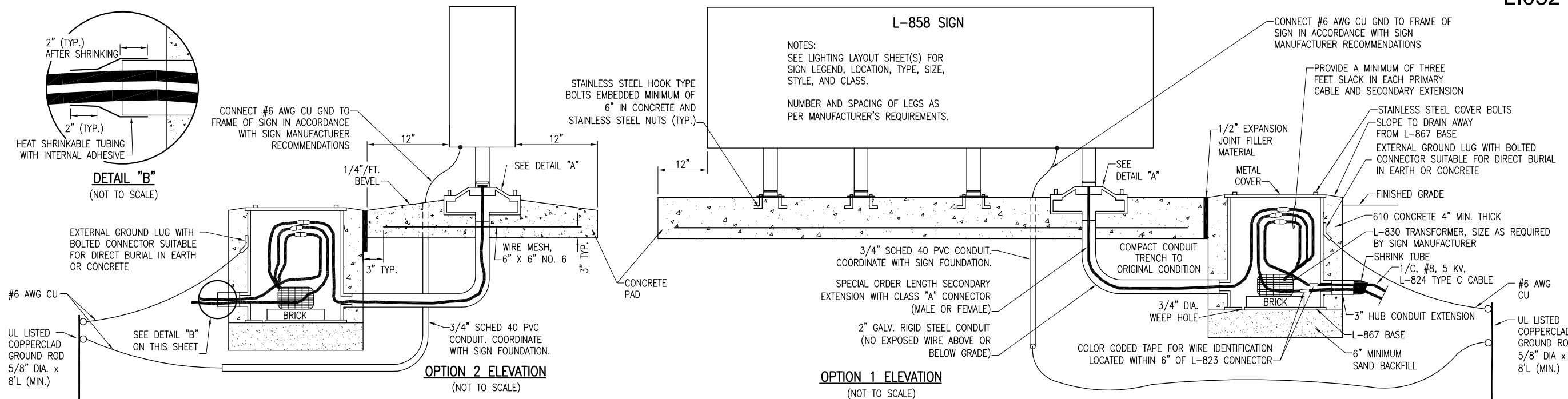
ALP PROJ.: 3-17-0063-B17  
IL PROJ.: 31F-4046

Hanson Project No.	10A0094D_0800
Filename	E-503.DWG
Scale	NOT TO SCALE
Date	02/04/11
LAYOUT	KNL 12/14/10
DRAWN	CWS 12/15/10
REVIEWED	CAH 12/22/10



TAXIWAY "C"  
EXTENSION

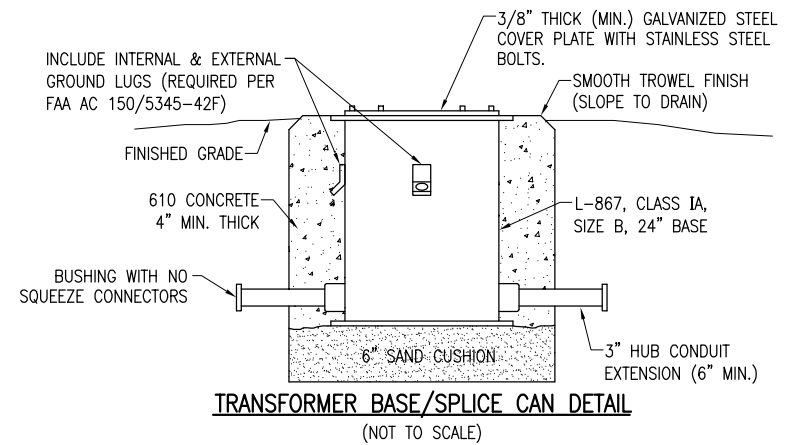
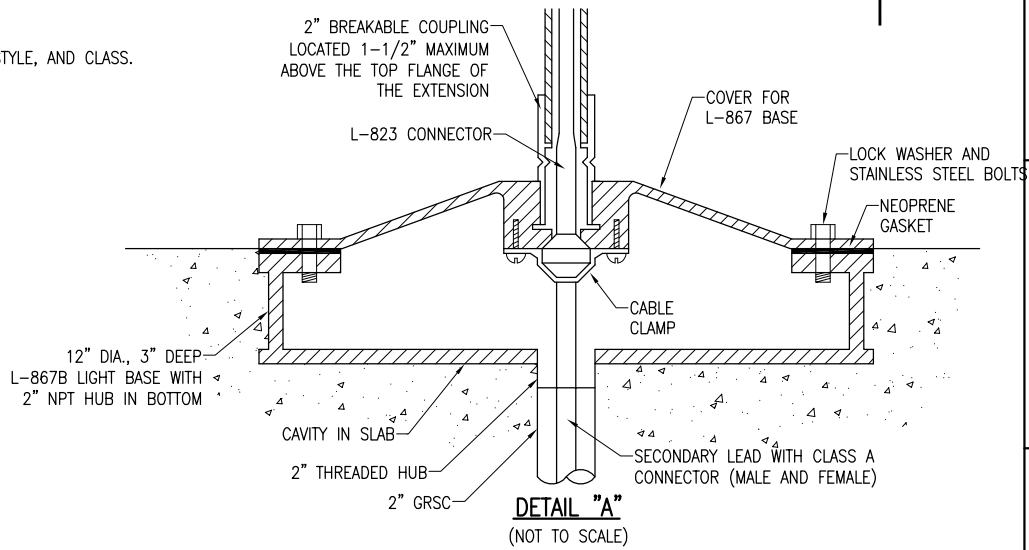
ELECTRICAL DETAILS SHEET 3



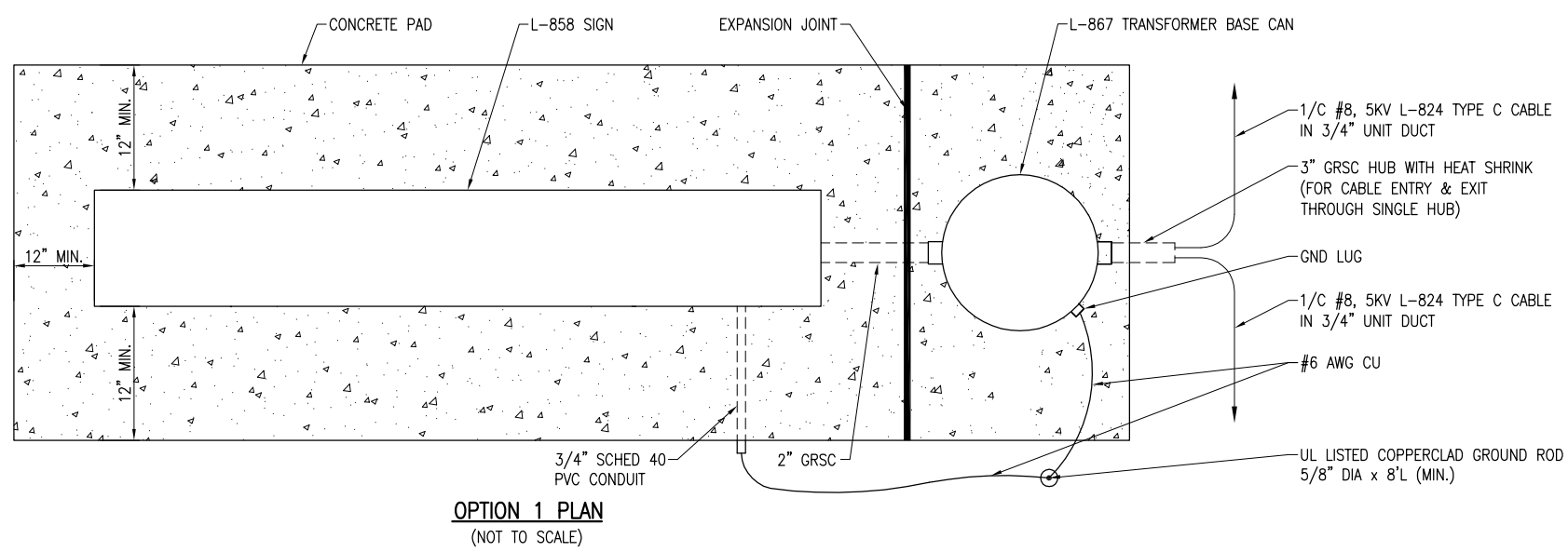
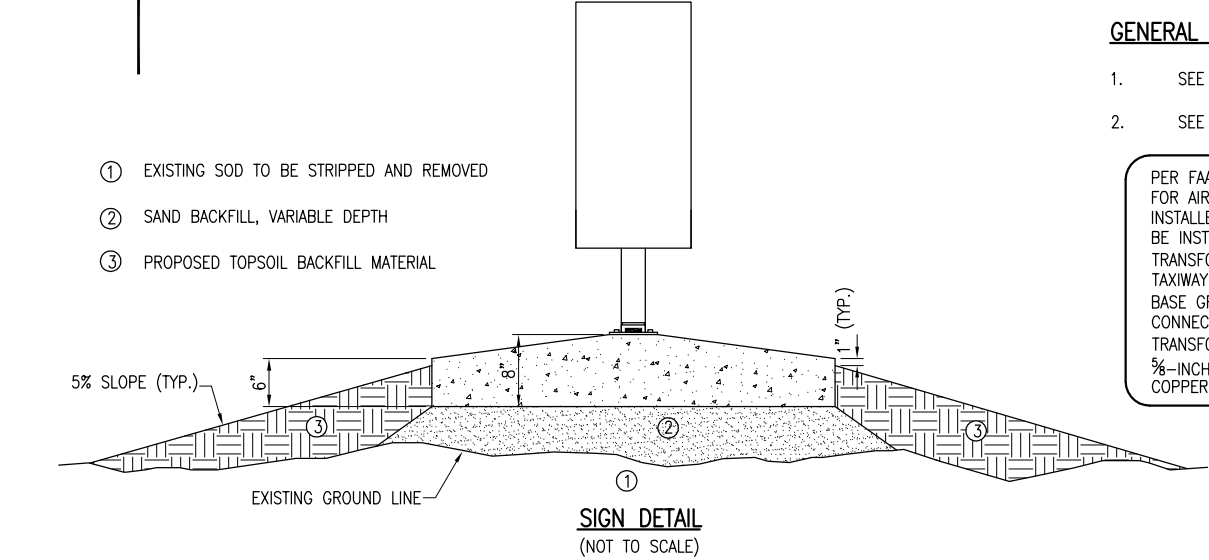
**GENERAL NOTES:**

- SEE LIGHTING LAYOUT SHEET FOR SIGN LEGEND, LOCATION, TYPE, SIZE, STYLE, AND CLASS.
- SEE ELECTRICAL NOTES SHEETS.

PER FAA AC 150/5340-30E DESIGN AND INSTALLATION DETAILS FOR AIRPORT VISUAL AIDS, A LIGHT BASE GROUND MUST BE INSTALLED AT EACH LIGHT FIXTURE. A LIGHT BASE GROUND SHALL BE INSTALLED AT EACH STAKE MOUNTED LIGHT AND EACH TRANSFORMER BASE/LIGHT CAN ASSOCIATED WITH RUNWAY LIGHTS, TAXIWAY LIGHTS, AND LIGHTED TAXI GUIDANCE SIGNS. THE LIGHT BASE GROUND SHALL BE A #6 AWG BARE COPPER CONDUCTOR CONNECTED TO THE GROUND LUG ON THE RESPECTIVE L-867 TRANSFORMER BASE/LIGHT CAN OR MOUNTING STAKE AND A 5/8-INCH DIAMETER BY 8-FOOT LONG (MINIMUM) UL LISTED COPPER CLAD GROUND ROD.



NOTE:  
FOR THE PURPOSE OF ENHANCING SAFETY, EACH BASE MUST HAVE INSTALLED, BY THE MANUFACTURER, AN INTERNAL AND EXTERNAL GROUND STRAP THAT IS AVAILABLE FOR THE PURPOSE OF ATTACHING A GROUND LUG THAT IS CONNECTED TO AN EARTH GROUND OR A SAFETY GROUND CONDUCTOR INSTALLED WITH THE RESPECTIVE CIRCUIT. FOR AIRPORT PROJECTS RECEIVING FEDERAL FUNDS THIS REQUIREMENT IS MANDATORY PER FAA AC 150/5345-42F.



MAR 14, 2011 9:48 AM HAGL000382 I:\AIRPORTS\LITCHFIELD\10A0094\CADD\AIRPORT\SHEET\E-503.DWG - ELECTRICAL DETAILS SHEET 3