

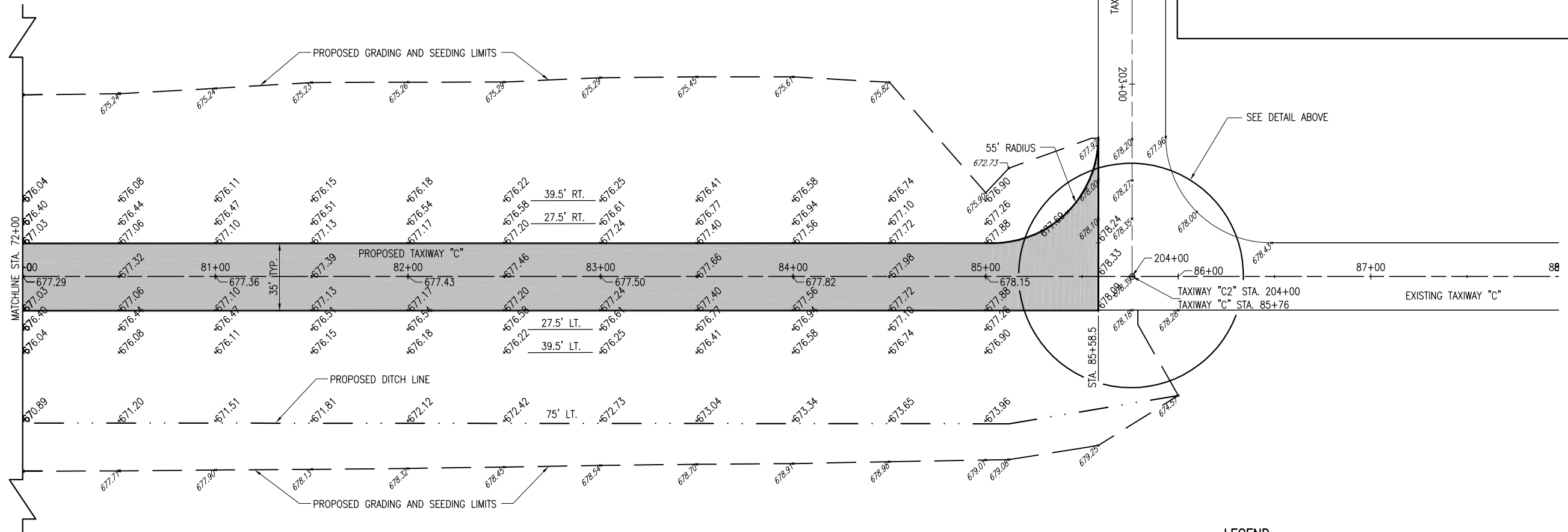
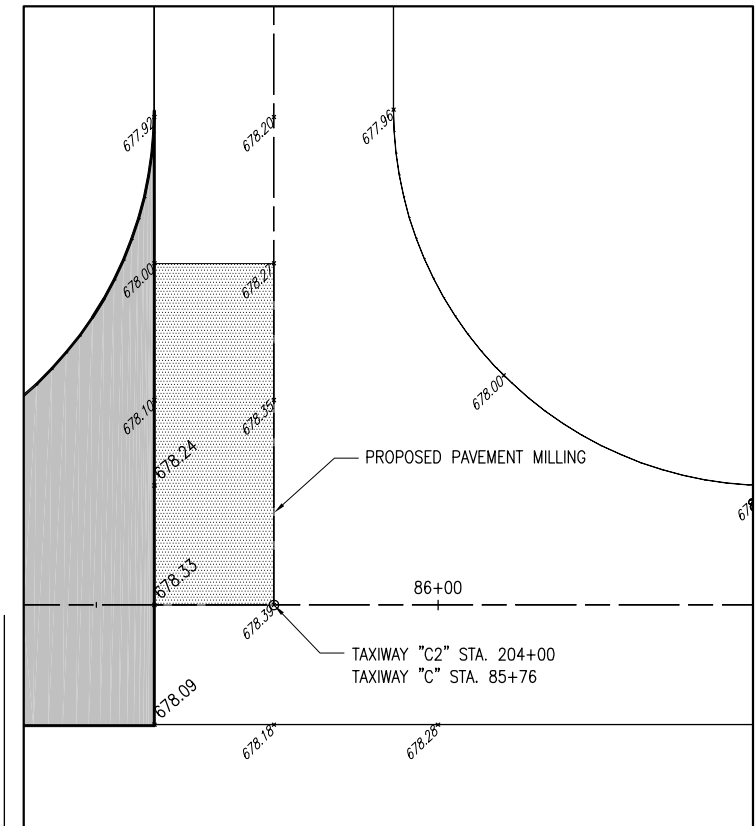
EARTHWORK DISTRIBUTION

CUT - 16,165.00 C.Y.
 FILL - 11,496.27 C.Y.
 SHRINKAGE FACTOR - 1.406%

EROSION CONTROL BLANKET NOTES

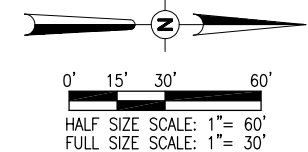
AN EROSION CONTROL MATERIAL (KNITTED STRAW MAT) 4' IN WIDTH WILL BE INSTALLED ALONG THE SHOULDER OF ALL PAVEMENTS WITH IN THE GRADING AND SEEDING LIMITS SHOWN ON THESE CONSTRUCTION PLAN SHEETS AND IN ACCORDANCE WITH THE SPECIAL PROVISION

THIS ITEM OF WORK SHALL BE PAID FOR UNDER ITEM AR156531 "EROSION CONTROL BLANKET" _____ PER S.Y.



LEGEND

- EXISTING IMPROVEMENTS
- PROPOSED IMPROVEMENTS
- PROPOSED GRADING AND SEEDING LIMITS
- EXISTING GRADE
- PROPOSED GRADE



DATE	REVISION	BY

**LITCHFIELD MUNICIPAL AIRPORT
 LITCHFIELD, ILLINOIS**

IL. PROJ.: 31F-4046 A.I.P. PROJ.: 3-17-0063-B17

Hanson Project No. 10A0094D_0800	BAK	02/11/11
Filename: R-191STK.DWG	BAK	02/11/11
Scale: 1"=30'	CAH	02/17/11
Date: 02/04/11		



**TAXIWAY "C"
 EXTENSION**

PROPOSED STAKING PLAN
 STA. 80+00 TO STA. 85+76

MAR 14, 2011 8:46 AM HAGL000382 I:\AIRPORTS\LITCHFIELD\10A0094\CADD\AIRPORT\191STK.DWG - STA. 80+00 TO STA. 85+76