

F.A.U. RTE.	SECTION	COUNTY	TOTAL SHEETS	SHEET NO.
10-00243-01-LS		MCLEAN	15	15
CONTRACT NO. 91451				
ILLINOIS FED. AID PROJECT				

Client

Town of Normal
 100 E. Pheonix Avenue
 Normal, IL 61781-0589
 Contact: Wayne Aldrich
 Phone: 309-454-9780

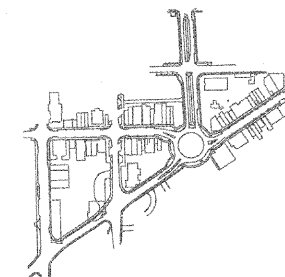
Landscape Architect

HGERR SCHAUDT
 landscape architects
 850 West Jackson Blvd., Suite 800
 Chicago, IL 60607
 Contact: Rick Reineke
 Phone: 312.492.6501

Subconsultant:

Subconsultant:

Key Plan



UPTOWN NORMAL

**Redevelopment Renewal Project
 Additional Planting**

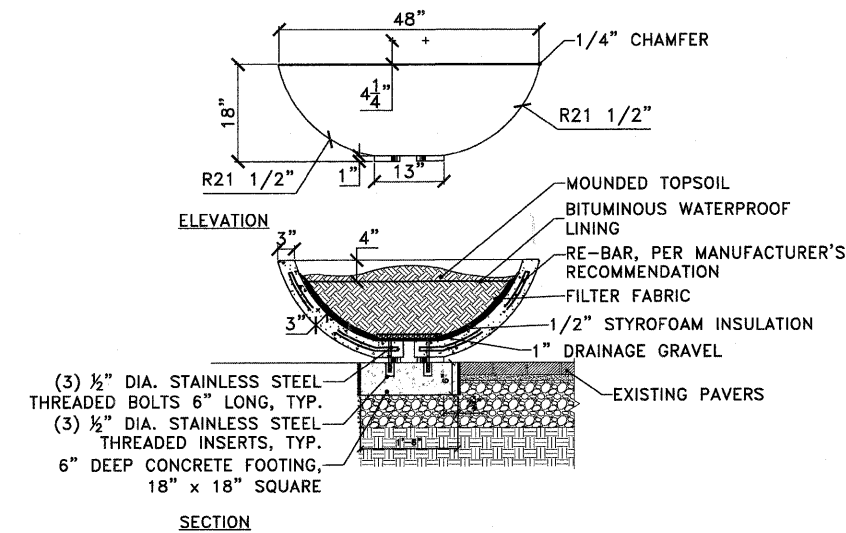
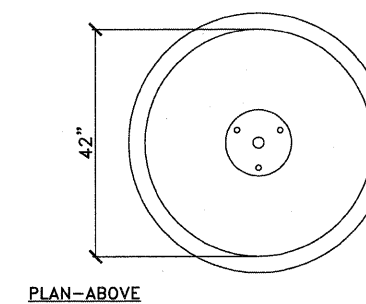
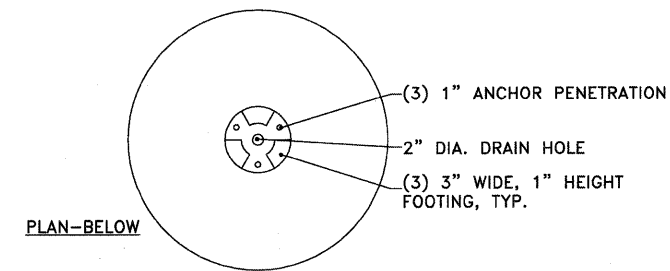
No. _____
 DATE: February 18, 2007
 SCALE: As Noted

No.	Date	Issue Description
1	12-22-10	Preliminary PSE Submittal
2	01-14-11	Final PSE Submittal

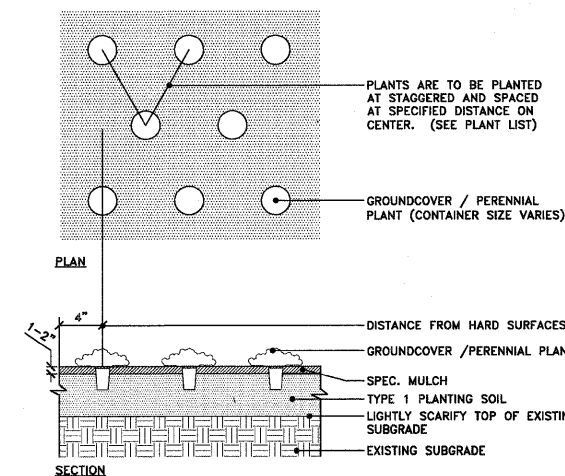
Drawn By: _____
 Project No. 0201.00 Date _____

**Landscape Planting
 Detail & Plantlist**

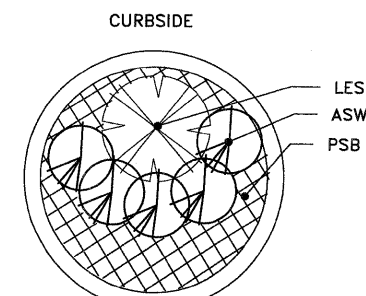
LP 5.1



2 4 FOOT PRE-CAST CONCRETE PLANTER
 Scale: 3/4"=1'-0"



1 Perennial / Ground Planting, Typ.
 Scale: 1"=1'-0"



3 4' PLANTER PLANTING PLAN
 Scale: 1/2"=1'-0"