

F.A.U. RTE.	SECTION	COUNTY	TOTAL SHEETS	SHEET NO.
10-00243-01-LS		MCLEAN	15	12
CONTRACT NO. 91451			ILLINOIS FED. AID PROJECT	

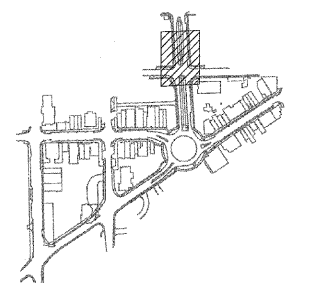
Client
Town of Normal
 100 E. Phoenix Avenue
 Normal, IL 61781-0589
 Contact: Wayne Aldrich
 Phone: 309-454-9760

Landscape Architect
HGERR SCHAUDT
 landscape architects
 850 West Jackson Blvd., Suite 800
 Chicago, IL 60607
 Contact: Rick Reineke
 Phone: 312.492.8501

Subconsultant:

Subconsultant:

Key Plan



Redevelopment Renewal Project
Additional Planting
 No.

DATE: February 18, 2007
 SCALE: As Noted

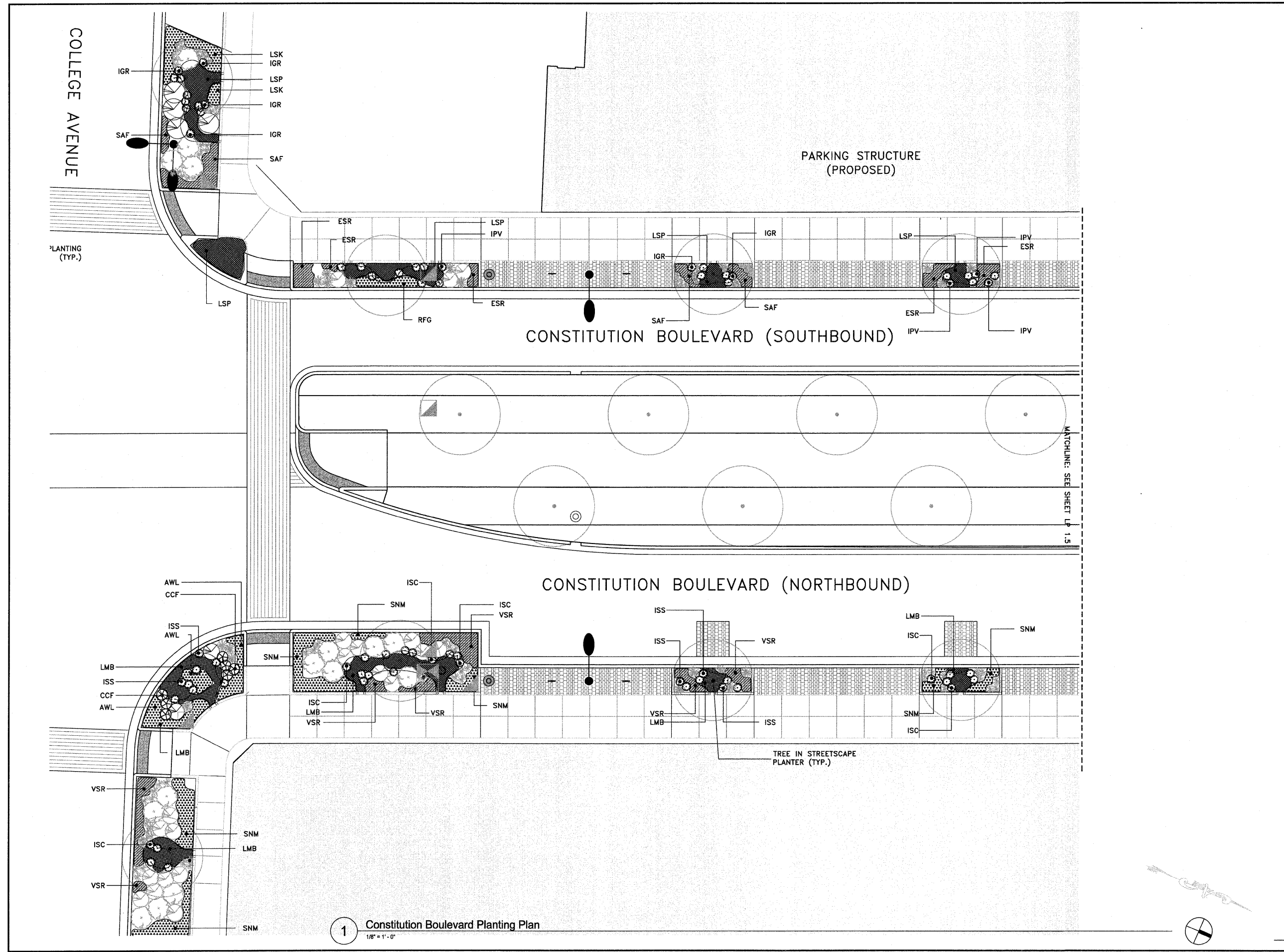
No.	Date	Issue Description
1	12-22-10	Preliminary PSE Submittal
2	01-14-11	Final PSE Submittal

Drawn By: _____ Date: _____
 Project No. 0201.00

Constitution Boulevard Planting Plans

LP 1.5

SHEET 12 OF 15 SHEETS



1 Constitution Boulevard Planting Plan
 1/8" = 1'-0"