

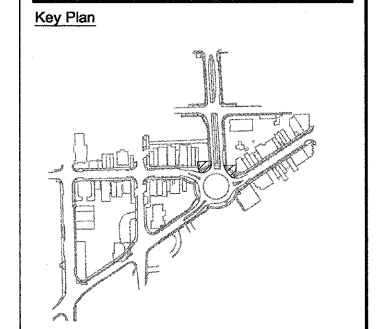
F.A.U. RTE.	SECTION	COUNTY	TOTAL SHEETS	SHEET NO.
10-00243-01-LS		MCLEAN	15	11
CONTRACT NO. 91451				
ILLINOIS FED. AID PROJECT				

**Client**  
**Town of Normal**  
 100 E. Phoenix Avenue  
 Normal, IL 61761-0589  
 Contact: Wayne Aldrich  
 Phone: 309-454-9780

**Landscape Architect**  
**HGERR SCHAUDT**  
 landscape architects  
 850 West Jackson Blvd., Suite 800  
 Chicago, IL 60607  
 Contact: Rick Reineke  
 Phone: 312-492-8501

**Subconsultant:**

**Subconsultant:**



**UPTOWN NORMAL**

**Redevelopment Renewal Project  
 Additional Planting**

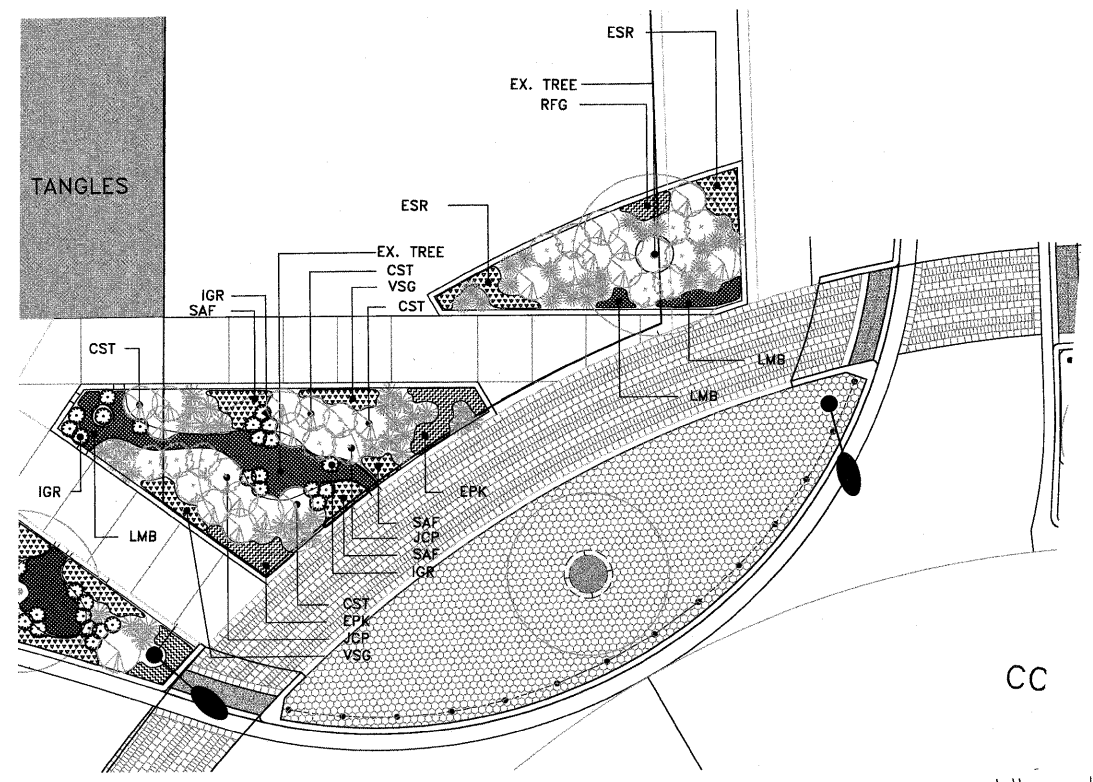
No.  
 DATE: February 18, 2007  
 SCALE: As Noted

No.	Date	Issue Description
1	12-22-10	Preliminary PSE Submittal
2	01-14-11	Final PSE Submittal

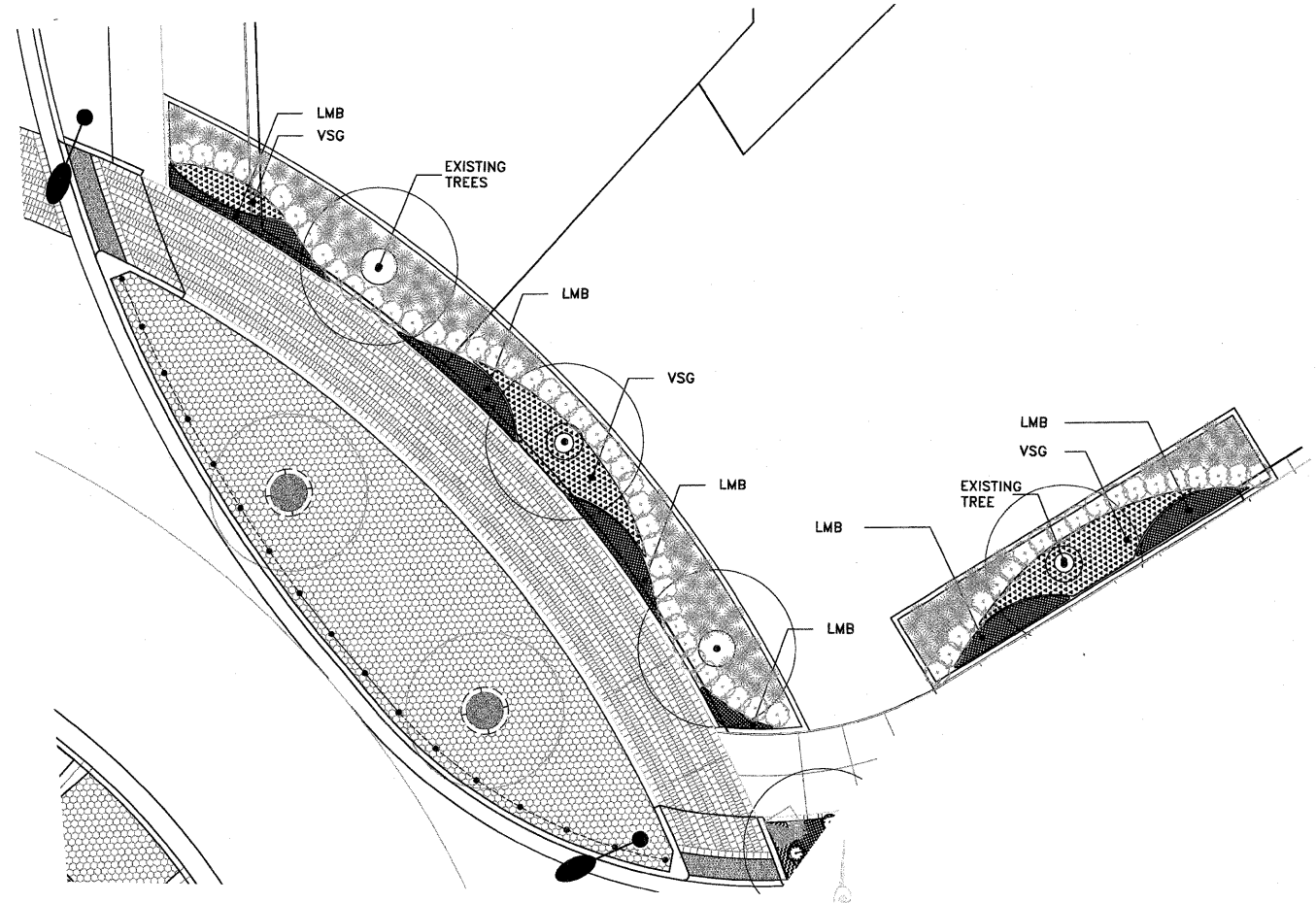
Drawn By:  
 Project No. 0201.00 Date

**Landscape Detail  
 Temporary Planting Plans**

**LP 1.4**



**2 Temporary Planting Area 1**  
 Scale: 1/8"=1'-0"



**1 Temporary Planting Area 2**  
 Scale: 1/8"=1'-0"