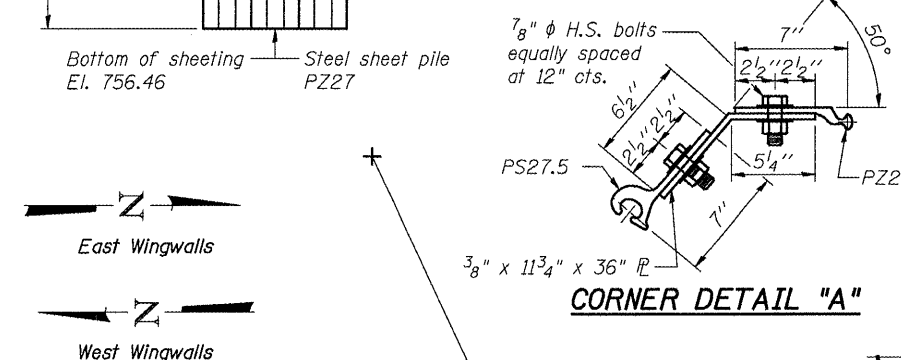
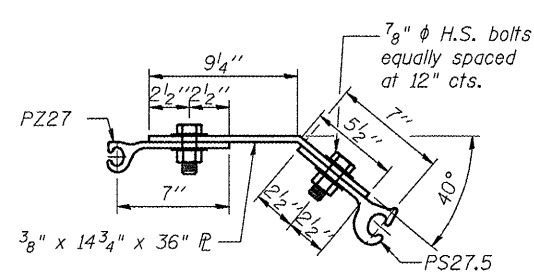


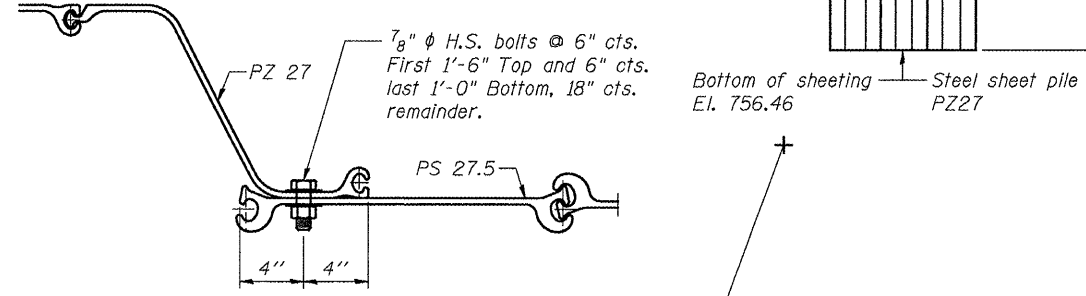
ELEVATION VIEW AT WINGWALLS



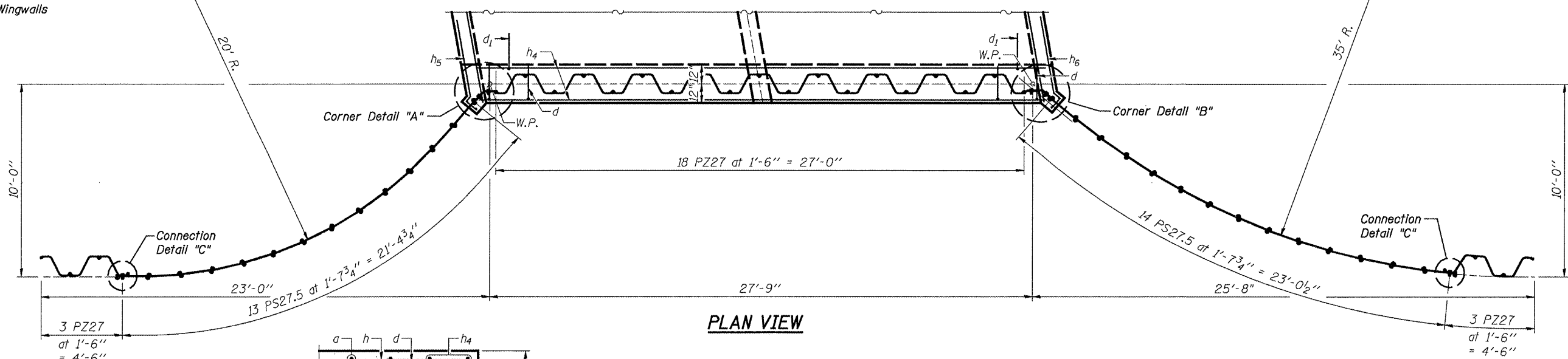
CORNER DETAIL "A"



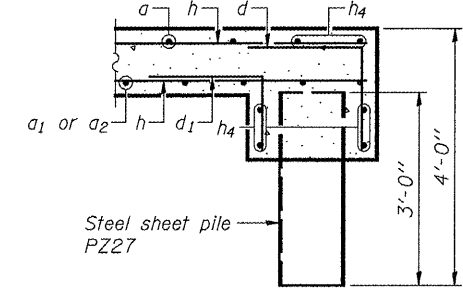
CORNER DETAIL "B"



CONNECTION DETAIL "C" AT END OF WINGS



PLAN VIEW



SECTION THRU CUTOFF WALL

**NOTES**  
 Contractor shall burn hole in sheeting for h<sub>5</sub> & h<sub>6</sub> bar placement. Cost incidental to Reinforcement Bars.  
 The Contractor shall be paid for furnished sheeting as shown and Contractor shall drive the sheeting an extra 6" if top is not damaged, as directed by the Engineer.  
 The sheeting shall be driven to the elevations shown.  
 A ±7 foot dense layer of soil is ±6" below Streambed Elev.  
 See Soil Borings on Structural Sheet 4 of 4.

**STEEL SHEET PILING DETAILS**  
**N. BOLTON ROAD OVER PRESTON CREEK**  
**STATION 20+00**  
**S.N. 089-5138**

|  |                    |                |            |              |           |
|--|--------------------|----------------|------------|--------------|-----------|
| STRUCTURAL SHEET NO. 3 OF 4 SHEETS                   | F.A.S. RTE.        | SECTION        | COUNTY     | TOTAL SHEETS | SHEET NO. |
|  | 78                 | 10-06118-00-BR | STEPHENSON | 18           | 12        |
|  | CONTRACT NO. 85531 |                |            |              |           |
| WHA # 1120D10 ILLINOIS FED. AID PROJECT ER-0177(038) |                    |                |            |              |           |

FILE = S:\PROJECTS\15\2010\1120D10\1120D10\_Stephenson\_Lo\_Bolton\_Rd\_Velbunns\_HUK1\1120D10sheet1111.ejout.dgn