

85531

STATE OF ILLINOIS
 DEPARTMENT OF TRANSPORTATION
 DIVISION OF HIGHWAYS
**PLANS FOR PROPOSED
 FEDERAL AID PROJECT
 HIGHWAY BRIDGE PROGRAM**



LOCATION OF SECTION INDICATED THUS: - ■ -

- INDEX OF SHEETS**
- 1 = COVER SHEET
 - 2 = SUMMARY OF QUANTITIES
 - 3-4 = GENERAL NOTES, SCHEDULES AND TYPICAL SECTIONS
 - 5 = TRAFFIC CONTROL PLAN
 - 6-7 = PLAN AND PROFILE
 - 8 = EROSION CONTROL PLAN
 - 9 = STORM WATER POLLUTION PREVENTION PLAN
 - 10 = RIPRAP & PILING DETAILS
 - 11 = DOUBLE BARREL BOX CULVERT DETAILS
 - 12 = STEEL SHEET PILING DETAILS
 - 13 = SOIL BORINGS
 - 14-18 = CROSS SECTIONS

**FAS ROUTE 78 (N BOLTON ROAD)
 SECTION 10-06118-00-BR
 PROJECT ER-0177(038)
 STRUCTURE REPLACEMENT
 STEPHENSON COUNTY**

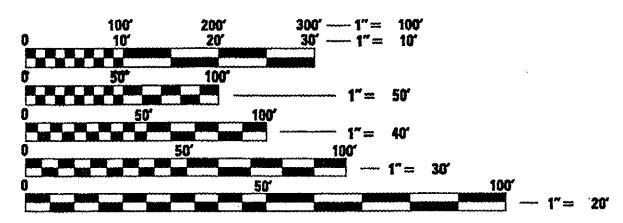
C-92-059-11

- STANDARDS**
- 000001-06 STANDARD SYMBOLS, ABBREVIATIONS, AND PATTERNS
 - 280001-05 TEMPORARY EROSION CONTROL SYSTEMS
 - 420001-07 PAVEMENT JOINTS
 - 420101-04 24' (7.2 m) JOINTED PCC PAVEMENT
 - 515001-03 NAME PLATES FOR BRIDGES
 - 665001-02 WOVEN WIRE FENCE
 - 701006-03 OFF-RD OPERATIONS, 2L, 2W, 15' TO 24" FROM PAVEMENT EDGE
 - 701201-03 LANE CLOSURE, 2L, 2W, DAY ONLY, FOR SPEEDS ≥ 45 M.P.H.
 - 701301-04 LANE CLOSURE, 2L, 2W, SHORT TIME OPERATIONS
 - 701901-01 TRAFFIC CONTROL DEVICES
 - 720011-01 METAL POSTS FOR SIGNS, MARKERS, AND DELINEATORS
 - 728001-01 TELESCOPING STEEL SIGN SUPPORT
 - 729001-01 APPLICATIONS OF TYPE A & B METAL POSTS (FOR SIGNS & MARKERS)
 - B.L.R. 21-8 TYPICAL APPLICATION OF TRAFFIC CONTROL DEVICES FOR CONSTRUCTION ON RURAL LOCAL HIGHWAYS
 - B.L.R. 22-6 TYPICAL APPLICATION OF TRAFFIC CONTROL DEVICES FOR CONSTRUCTION ON RURAL LOCAL HIGHWAYS

UTILITIES:

VERIZON (FRONTIER COM.)
 112 ELM STREET
 SYCAMORE, IL 60178
 PH: 815-895-1538
 ATTN: GARRETT BURT

COM ED
 1910 S. BRIGGS ST.
 JOLIET, IL 60433-9599
 PH: 630-437-3313
 ATTN: CRAIG WEBER



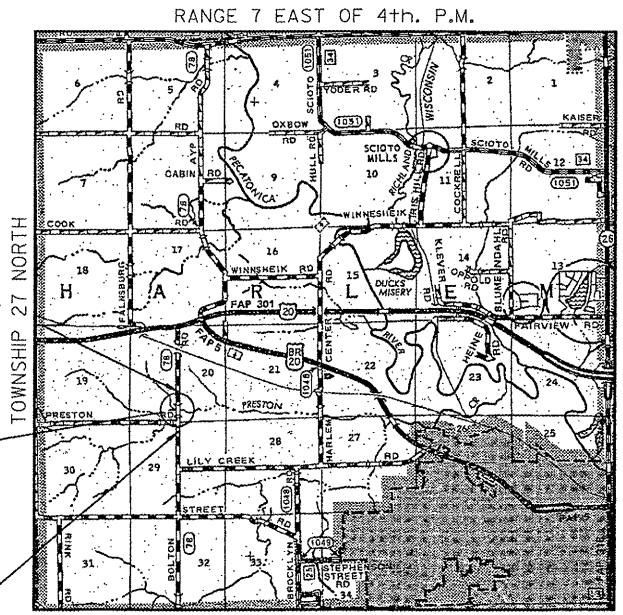
FULL SIZE PLANS HAVE BEEN PREPARED USING STANDARD ENGINEERING SCALES. REDUCED SIZED PLANS WILL NOT CONFORM TO STANDARD SCALES. IN MAKING MEASUREMENTS ON REDUCED PLANS, THE ABOVE SCALES MAY BE USED.

J.U.L.I.E.
 JOINT UTILITY LOCATION INFORMATION FOR EXCAVATION
 1-800-892-0123
 OR 811

**PROJECT ENGINEER
 PROJECT MANAGER**

CONTRACT NO. 85531

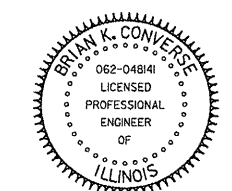
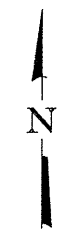
HIGHWAY CLASSIFICATION: MAJOR COLLECTOR (NON-URBAN)
 DESIGN SPEED: 40 M.P.H.
 ADT = 1070; 6% Trucks
 3R POLICY



PROPOSED STRUCTURE (S.N. 089-5138)
 A DOUBLE BARREL (13'-6" x 10'-6")
 R.C. BOX CULVERT @ STA. 20+00,
 SKEWED 10° RT. AHEAD.

LOCATION MAP

GROSS LENGTH = 600 FT. = 0.114 MILE
 NET LENGTH = 600 FT. = 0.114 MILE



Brian K. Converse
 DATE: 2/1/2011
 EXPIRES 11/30/11

STEPHENSON COUNTY HIGHWAY DEPARTMENT	
APPROVED	2-1-2011
<i>Mark Brantly</i> HARLEM ROAD DISTRICT COMMISSIONER	
APPROVED	2-1-2011
<i>Chris Smith</i> STEPHENSON COUNTY ENGINEER	
PASSED	FEB 14 2011
<i>[Signature]</i> DISTRICT 2 ENGINEER OF LOCAL ROADS & STREETS	
RELEASING FOR BID BASED ON LIMITED REVIEW	FEB 14 2011
<i>[Signature]</i> DEPUTY DIRECTOR OF HIGHWAYS, REGION 2 ENGINEER	
STATE OF ILLINOIS DEPARTMENT OF TRANSPORTATION	

**WILLETT,
 HOFMANN &
 ASSOCIATES, INC.**
CONSULTING ENGINEERS

Land Surveying - Transportation - Structural
 Environmental - Architecture

809 East Second Street Dixon, Illinois 61021
 Phone 815.284.3381 Fax 815.284.3385
 Design Firm #184-000918
 www.willetthofmann.com
 WHA #1120D10

FILE = S:\PROJECTS\2010\1120D10_Stephenson_Co_Bolton_Rd\DESIGN\STRUCT\1120D10\Cover.dgn