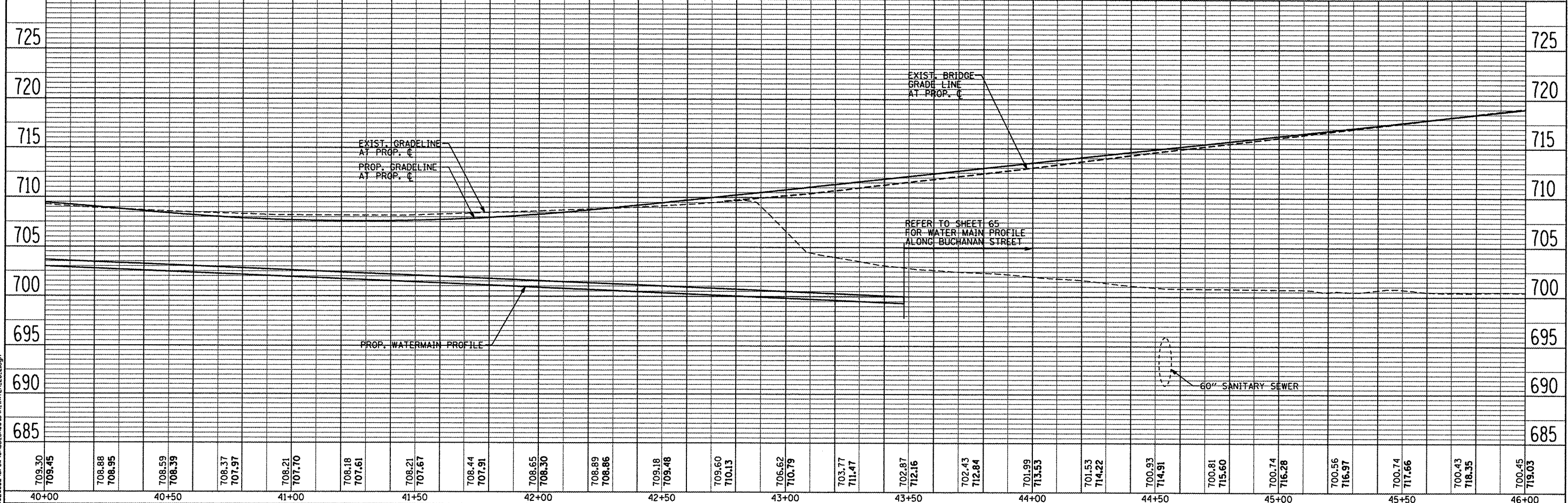
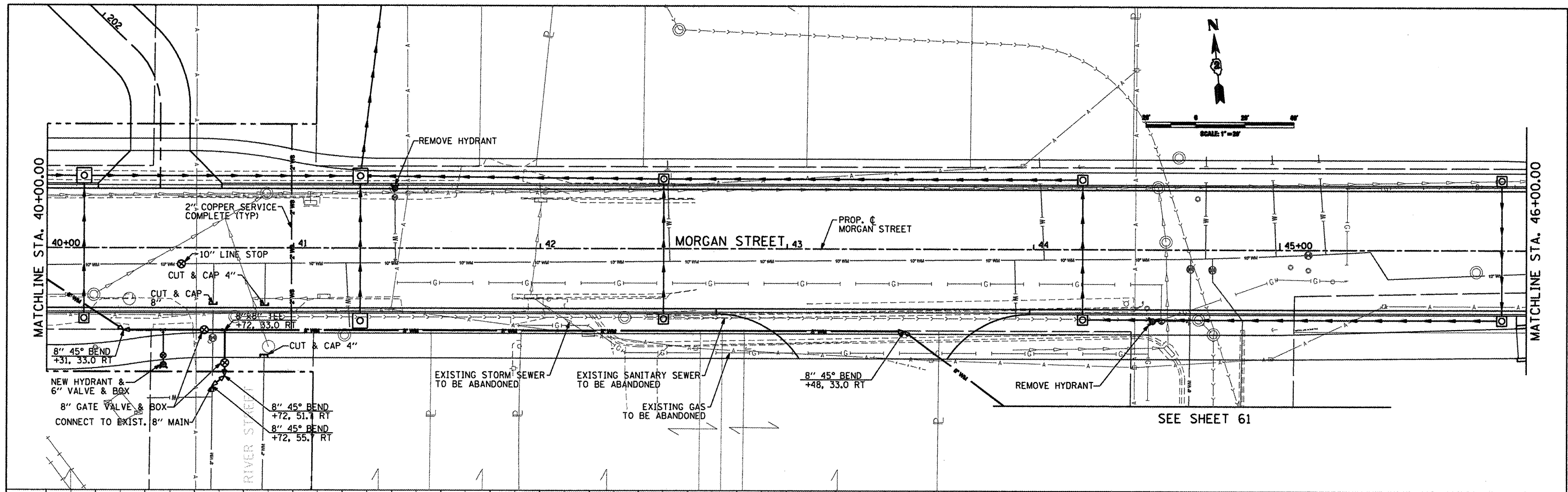


DATE	
BY	
REVISIONS	
NO.	
DESCRIPTION	
DATE	
BY	
REVISIONS	
NO.	
DESCRIPTION	
DATE	
BY	
REVISIONS	
NO.	
DESCRIPTION	
DATE	
BY	
REVISIONS	
NO.	
DESCRIPTION	
DATE	
BY	
REVISIONS	
NO.	
DESCRIPTION	
DATE	
BY	
REVISIONS	
NO.	
DESCRIPTION	

DATE	
BY	
REVISIONS	
NO.	
DESCRIPTION	
DATE	
BY	
REVISIONS	
NO.	
DESCRIPTION	
DATE	
BY	
REVISIONS	
NO.	
DESCRIPTION	
DATE	
BY	
REVISIONS	
NO.	
DESCRIPTION	
DATE	
BY	
REVISIONS	
NO.	
DESCRIPTION	



709.30 709.45	708.88 708.95	708.59 708.39	708.37 707.97	708.21 707.70	708.18 707.61	708.21 707.67	708.44 707.91	708.65 708.30	708.89 708.86	709.18 709.48	709.60 710.13	708.62 710.79	703.77 711.47	702.87 712.16	702.43 712.84	701.99 713.53	701.53 714.22	700.93 714.91	700.81 715.60	700.74 716.28	700.56 716.97	700.74 717.66	700.43 718.35	700.45 719.03
40+00	40+50	41+00	41+50	42+00	42+50	43+00	43+50	44+00	44+50	45+00	45+50	46+00												

CMT
CRAWFORD, MURPHY & TILLY, INC.
CONSULTING ENGINEERS
License No. 184-00063

USER NAME = Steve Prange	DESIGNED SJP / MNB	REVISED -
DRAWN ERD	REVISED -	
CHECKED SJP	REVISED -	
DATE 02/04/2011	REVISED -	

CITY OF ROCKFORD
MORGAN STREET BRIDGE

PROPOSED WATERMAIN PLAN & PROFILE
MORGAN STREET / COLLEGE AVENUE

F.A. RTE.	SECTION	COUNTY	TOTAL SHEET NO.
5077	99-00493-00-BR	WINNEBAGO	253 54
CONTRACT NO. 85529			
FED. ROAD DIST. NO. 2 ILLINOIS		FED. AID PROJECT BRM-50991651	

SCALE: 1" = 20' SHEET NO. 2 OF 11 SHEETS STA. 40+00 TO STA. 46+00