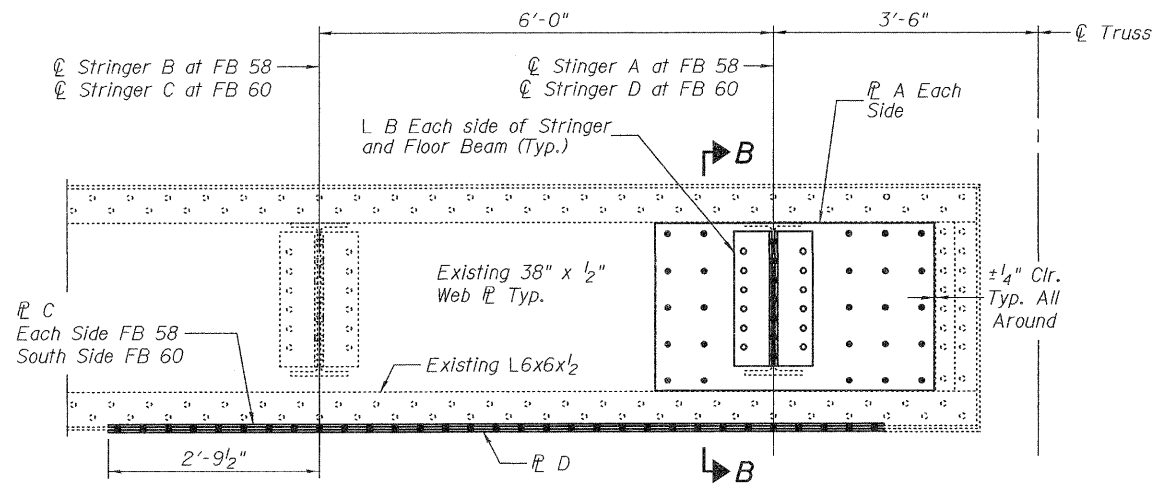
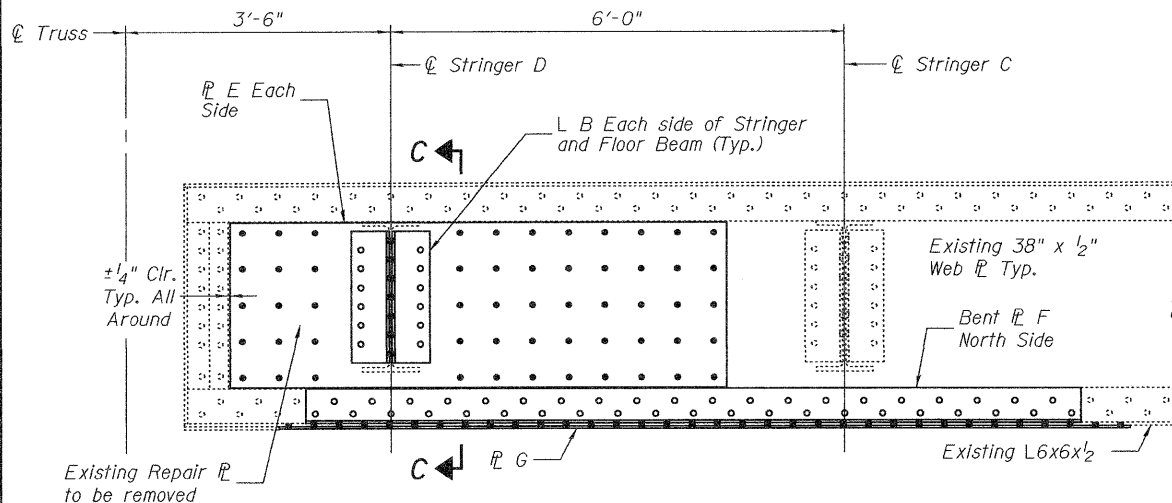


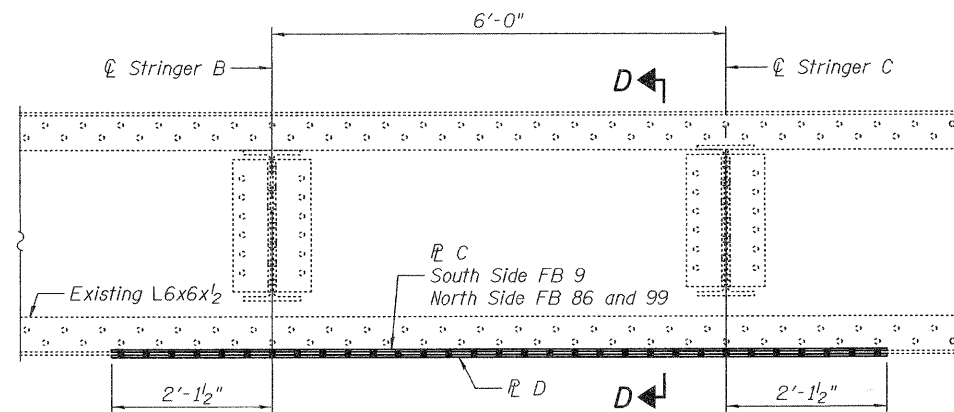
REPAIR B AT FLOOR BEAMS 56 and 66



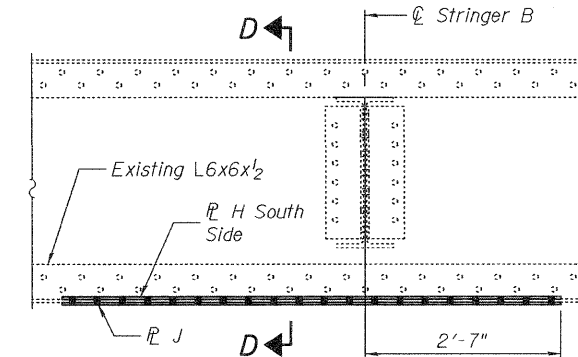
REPAIRS B AND C AT FLOOR BEAMS 58 and 60



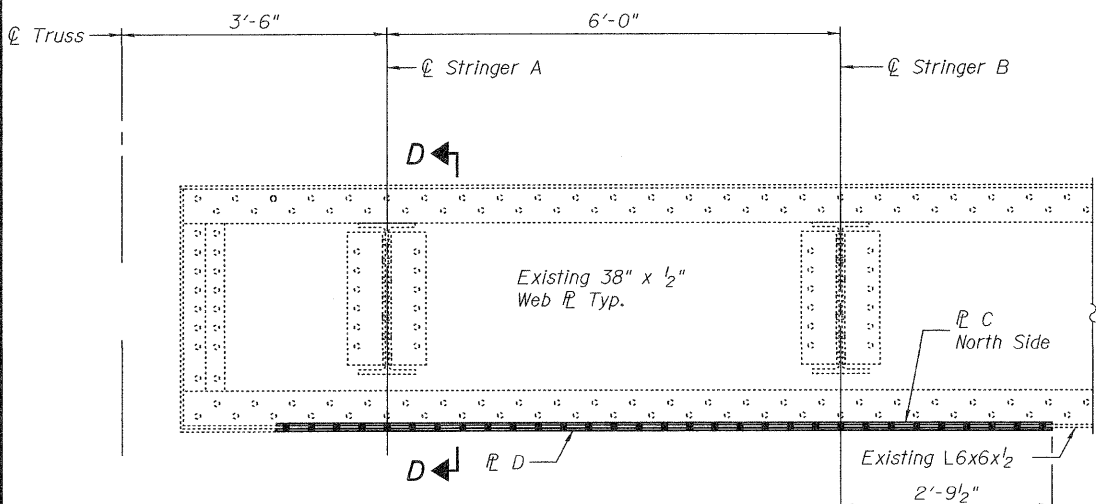
REPAIRS B AND C AT FLOOR BEAM 96 (Looking South)



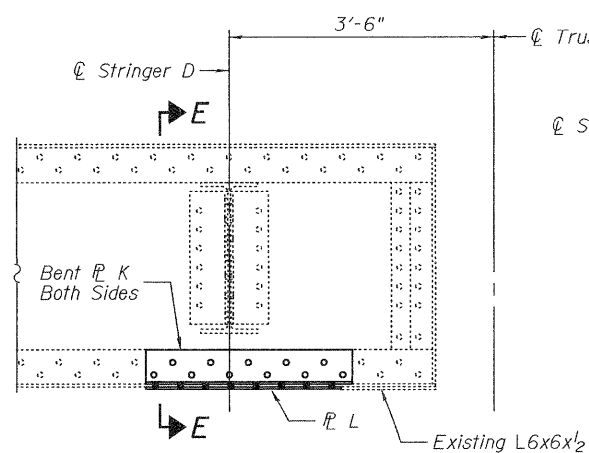
REPAIR C AT FLOOR BEAM 9, 86 and 99 (Looking North)



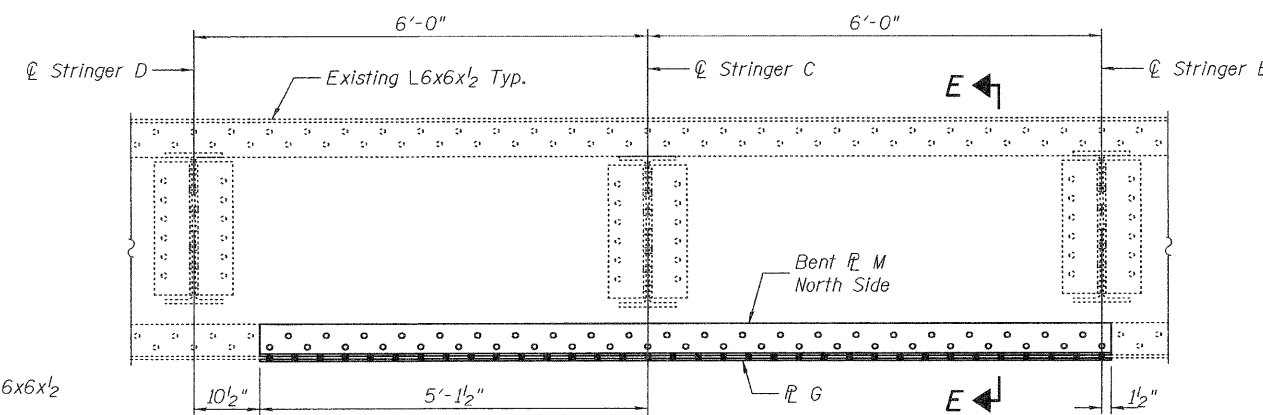
REPAIR C AT FLOOR BEAM 10 (Looking North)



REPAIR C AT FLOOR BEAM 24 (Looking North)



REPAIR C AT FLOOR BEAM 46 (Looking North)



REPAIR C AT FLOOR BEAM 77 (Looking South)

See sheet 12 of 14 for Sections
See sheet 12 and 13 of 14 for R details

DESIGNED - G.G.E.
CHECKED - V.H.V.
DRAWN - Drew Christopher
CHECKED - G.G.E. V.H.V.

EXAMINED
PASSED
DATE - MARCH 14, 2011
ACTING ENGINEER OF STRUCTURAL SERVICES
ACTING ENGINEER OF BRIDGES AND STRUCTURES

STATE OF ILLINOIS
DEPARTMENT OF TRANSPORTATION

REPAIR B AND C DETAILS
SN 002-0005

SHEET NO. 11 OF 14 SHEETS

F.A.S. RTE.	SECTION	COUNTY	TOTAL SHEETS	SHEET NO.
944	(138D-BR)I-6	Alexander	22	19
CONTRACT NO. 78250			ILLINOIS FED. AID PROJECT	