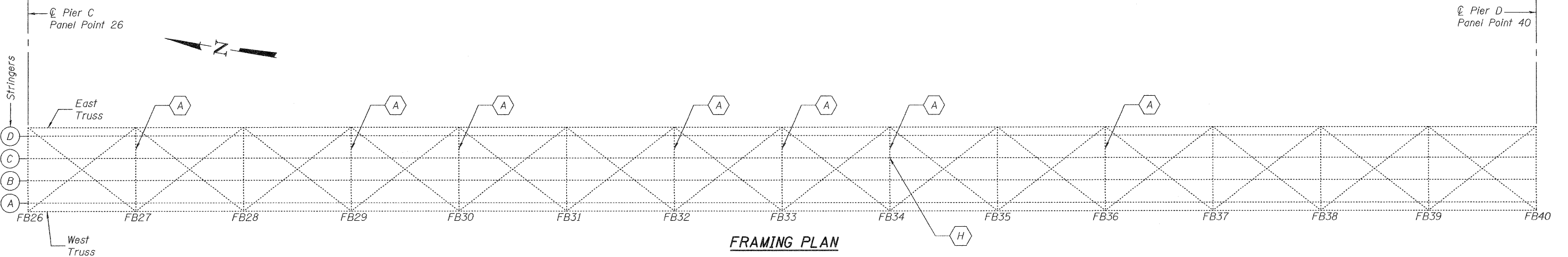


ELEVATION

450'-0" Span C



FRAMING PLAN

- A Repair Top Angles
- B Repair Web
- C Repair Bottom Angles
- D Replace Missing Rivets
- E Remove and Replace Neoprene Joint
- F Jack and Reposition Truss Bearing
- G Jack Remove and Reinstall Approach Bearings
- H Stringer Repair

DESIGNED - G.G.E.
 CHECKED - V.H.V.
 DRAWN - **Drew Christopher**
 CHECKED - G.G.E. V.H.V.

EXAMINED *James F. [Signature]* DATE - MARCH 14, 2011
 ACTING ENGINEER OF STRUCTURAL SERVICES
 PASSED *Carl [Signature]*
 ACTING ENGINEER OF BRIDGES AND STRUCTURES

**STATE OF ILLINOIS
 DEPARTMENT OF TRANSPORTATION**

**SPAN C PLAN AND ELEVATION
 SN 002-0005**

SHEET NO. 3 OF 14 SHEETS

F.A.S. RTE.	SECTION	COUNTY	TOTAL SHEETS	SHEET NO.
944	(138D-BR)I-6	Alexander	22	11
CONTRACT NO. 78250			ILLINOIS FED. AID PROJECT	