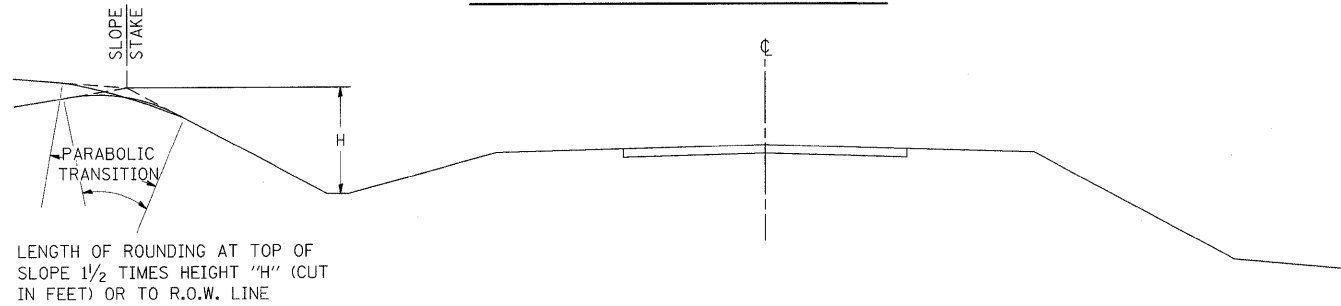
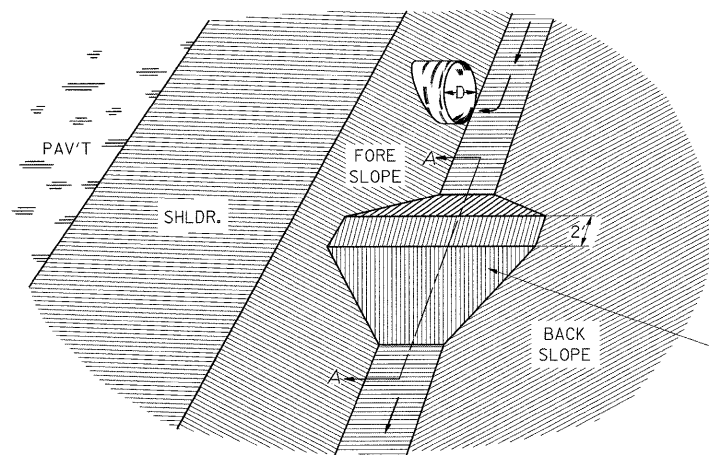


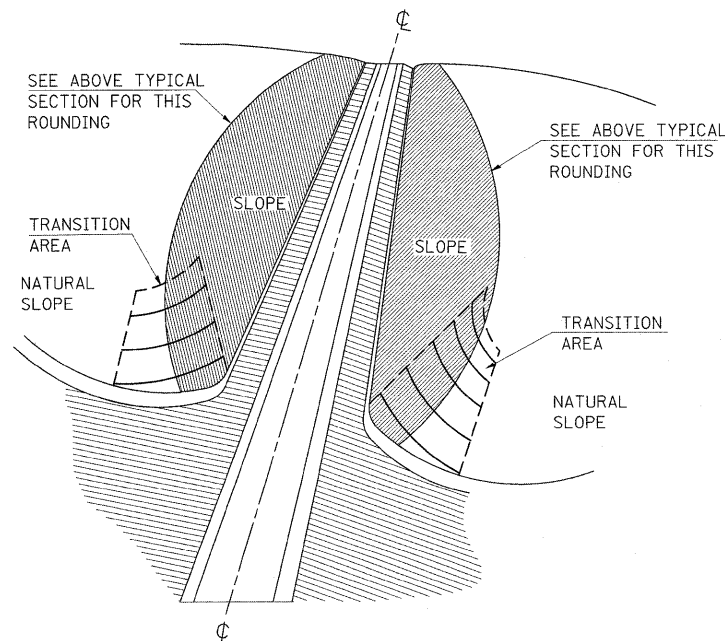
TYPICAL SECTIONS OF TRANSITIONS OF SLOPES AND INCIDENTAL GRADING



SECTION SHOWING TRANSITIONS OF PROPOSED SLOPES



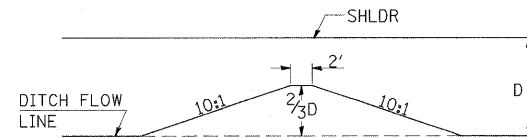
DITCH PLUG DETAIL



DETAIL OF SLOPE TO NATURAL GROUND TRANSITION

NOTE:

DITCH PLUG TO BE CONSTRUCTED AS DIRECTED BY THE ENGINEER, INCLUDED IN THE EARTH EXCAVATION



SECTION A-A

EARTH DITCH PLUG TO BE CONSTRUCTED AT LOCATIONS SHOWN ON THE PLANS OR AS DIRECTED BY THE ENGINEER, AND TO BE CONSIDERED INCLUDED IN THE EARTH EXCAVATION.

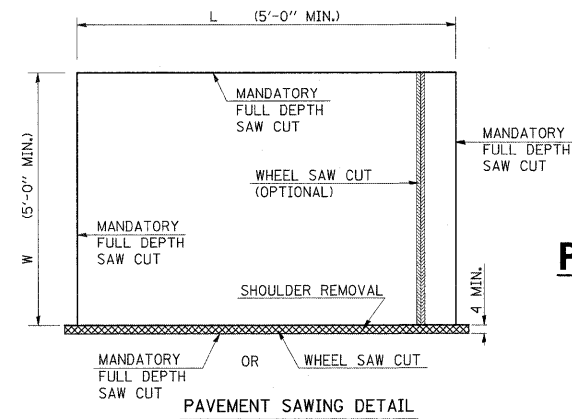
TRANSITION GRADING

TRANSITION GRADING BETWEEN CUT AND FILL SLOPES AND BETWEEN CUT SLOPES AND NATURAL GROUND WILL BE REQUIRED ON THIS IMPROVEMENT. THE TRANSITION SHALL BE ROUNDED AND STREAMLINED IN ORDER TO BLEND THE CUT SLOPES AND THE FILL SLOPES INTO EACH OTHER AND INTO THE ADJACENT TERRAIN. THE SLOPES AS SHOWN ON THE CROSS SECTIONS IN THESE PLANS MAY BE VARIED SOMEWHAT IN THE TRANSITION AREAS AS DIRECTED BY THE ENGINEER IN ORDER TO MEET THIS GRADING REQUIREMENT. THE QUANTITIES OF EARTH EXCAVATION INVOLVED ARE INCLUDED IN THE BALANCE QUANTITIES SHOWN ON THE PLANS AND NO OTHER COMPENSATION WILL BE ALLOWED.

REVISIONS	
REDRAWN	2-15-89
RESIZED	5-8-08

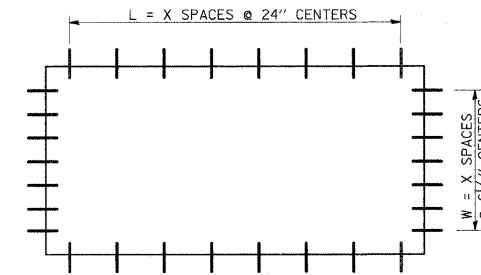
STD. 9-17

STATE OF ILLINOIS
DEPARTMENT OF TRANSPORTATION

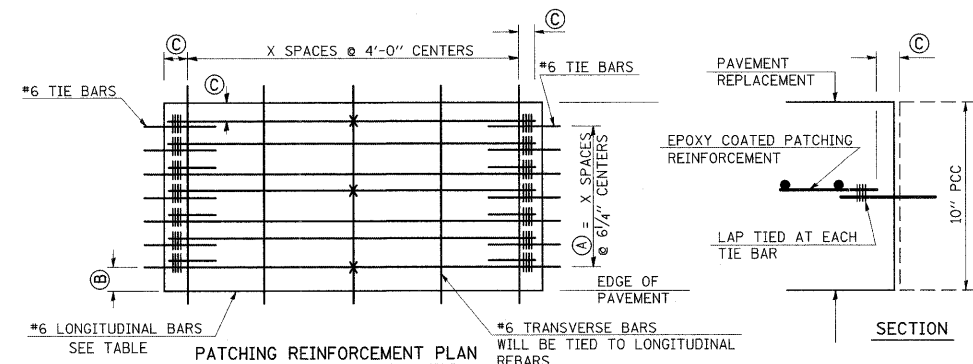
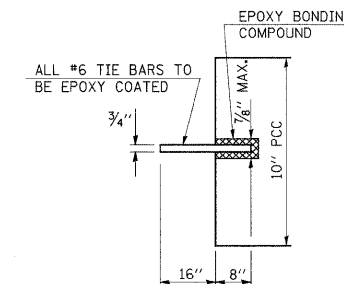


PAVEMENT SAWING DETAIL

PAVEMENT REPLACEMENT, SPECIAL



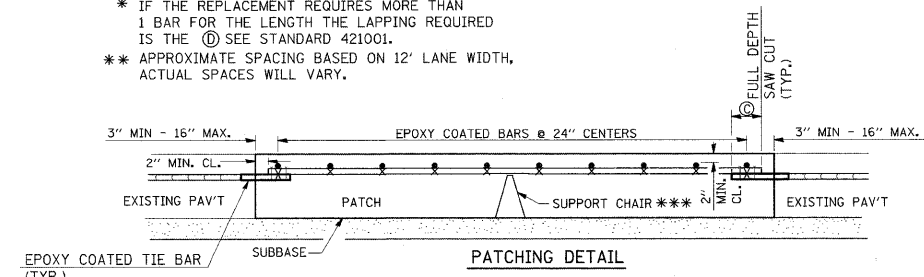
TIE BAR PLAN
(IF PAVED SHOULDER TIE BAR NOT USED)



NOTE: IF LONGITUDINAL BARS ARE LONGER THAN 30' THEN A (C) LAP SPLICE WILL BE REQUIRED.

BAR SIZE	EXISTING PAVEMENT THICKNESS	ALL DIMENSIONS ARE IN INCHES			
		(A) (APPROX. SPACING)	(B)	(C)	(D)
#6	7 1/4 THRU 8 1/2	18 SPACES (19 BARS) @ 7 1/2	3 1/2	3	22
#6	8 1/2 THRU 9 1/2	20 SPACES (21 BARS) @ 6 1/2	3 1/2	3	22
#6	9 1/2 THRU 10 1/2	22 SPACES (23 BARS) @ 6 1/4	3 1/2	3	22
#6	10 1/2 THRU 11 1/2	24 SPACES (25 BARS) @ 5 3/4	3 1/2	3	22
#6	11 1/2 THRU 12 1/2	27 SPACES (28 BARS) @ 5 1/8	3 1/2	3	22

* IF THE REPLACEMENT REQUIRES MORE THAN 1 BAR FOR THE LENGTH THE LAPPING REQUIRED IS THE (D) SEE STANDARD 421001.
** APPROXIMATE SPACING BASED ON 12' LANE WIDTH, ACTUAL SPACES WILL VARY.



EVERY THIRD INTERSECTION MUST BE TIED.
*** SUPPORT CHAIRS WILL BE PLACED SUCH THAT UNIFORM UNSUPPORTED LENGTHS WILL NOT EXCEED 4'-0".

FILE NAME =	USER NAME = hagesaw	DESIGNED -	REVISED -
c:\pwork\pwork\hagesaw\d8169788\78172	shht.msc.dgn	DRAWN -	REVISED -
	PLOT SCALE = 50.0000' / IN.	CHECKED -	REVISED -
	PLOT DATE = 2/4/2011	DATE -	REVISED -

TYPICAL SECTIONS OF TRANSITIONS OF SLOPES AND INCIDENTAL GRADING				F.A.I. RTE. 57	SECTION	COUNTY Jefferson	TOTAL SHEETS 422	SHEET NO. 161
SCALE:	SHEET NO.	OF SHEETS	STA. TO STA.	CONTRACT NO. 78172				
								ILLINOIS FED. AID PROJECT

(41-2-1,41-3,41-3)R-1